

AIR CONDITIONING SYSTEMS

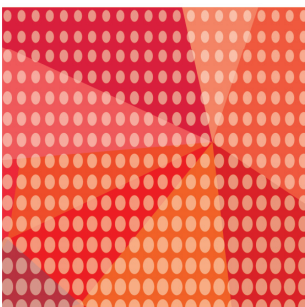
CITY MULTI



DATA BOOK

MODEL

PEFY-WL-NMAU-A



PEFY-WL-NMAU-A

1. SPECIFICATIONS	2
2. EXTERNAL DIMENSIONS	5
3. CENTER OF GRAVITY	9
4. ELECTRICAL WIRING DIAGRAMS	10
5. SOUND LEVELS	11
5-1. Sound levels	11
5-2. NC curves	12
6. FAN CHARACTERISTICS CURVES.....	15
7. OA INTAKE-STATIC PRESSURE CURVES.....	23
8. ELECTRICAL CHARACTERISTICS.....	24
9. OPTIONAL PARTS.....	25
9-1. Optional parts line up for the Indoor unit.....	25
9-2. Filter box	25
9-3. External heater adapter	26

1. SPECIFICATIONS

Ceiling concealed (Medium static pressure type)

PEFY-WL-NMAU-A

Model			PEFY-WL06NMAU-A	PEFY-WL08NMAU-A	PEFY-WL12NMAU-A	PEFY-WL15NMAU-A		
Power source			1-phase 208/230 V 60 Hz	1-phase 208/230 V 60 Hz	1-phase 208/230 V 60 Hz	1-phase 208/230 V 60 Hz		
Cooling capacity	*1	BTU/h	6,000	8,000	12,000	15,000		
		kW	1.8	2.3	3.5	4.4		
	*2	Power input	kW	0.042	0.042	0.052	0.062	
		Current input	A	0.42/0.38	0.42/0.38	0.56/0.51	0.64/0.58	
Heating capacity	*3	BTU/h	6,700	9,000	13,500	17,000		
		kW	2.0	2.6	4.0	5.0		
	*2	Power input	kW	0.040	0.040	0.050	0.060	
		Current input	A	0.42/0.38	0.42/0.38	0.56/0.51	0.64/0.58	
External finish			Galvanized steel plate	Galvanized steel plate	Galvanized steel plate	Galvanized steel plate		
External dimension H x W x D			inch	9-7/8 x 27-9/16 x 28-7/8	9-7/8 x 27-9/16 x 28-7/8	9-7/8 x 27-9/16 x 28-7/8	9-7/8 x 35-7/16 x 28-7/8	
			mm	250 x 700 x 732	250 x 700 x 732	250 x 700 x 732	250 x 900 x 732	
Net weight			lbs (kg)	47 (21)	47 (21)	55 (25)		
Heat exchanger			Cross fin (Aluminum fin and copper tube)	Cross fin (Aluminum fin and copper tube)	Cross fin (Aluminum fin and copper tube)	Cross fin (Aluminum fin and copper tube)		
Water Volume			L	0.9	0.9	1.2		
FAN			Type x Quantity					
			Sirocco fan x 1					
*4 External static press.			in.WG	<0.14> - 0.20 - <0.28> - <0.40> - <0.60>	<0.14> - 0.20 - <0.28> - <0.40> - <0.60>	<0.14> - 0.20 - <0.28> - <0.40> - <0.60>	<0.14> - 0.20 - <0.28> - <0.40> - <0.60>	
			Pa	<35> - 50 - <70> - <100> - <150>	<35> - 50 - <70> - <100> - <150>	<35> - 50 - <70> - <100> - <150>	<35> - 50 - <70> - <100> - <150>	
Motor Type			DC motor					
Motor output			kW					
			0.085					
Driving mechanism			Direct-driven by motor					
Air flow rate			(Low-Mid-High)					
			cfm					
			212 - 265 - 300					
			m ³ /min					
			6.0 - 7.5 - 8.5					
			L/s					
			100 - 125 - 142					
Sound pressure level (measured in anechoic room)			(Low-Mid-High)					
*2 dB <A>			24-28-30					
			24-28-30					
			26-30-34					
			27-31-34					
Insulation material			EPS, Polyethylene foam, Urethane foam					
Air filter			PP honeycomb fabric.					
Protection device			Fuse					
Refrigerant control device			-					
Connectable HBC controller			CMB-WP-NU-AA, CMB-WP-NU-AB					
Water piping diameter *5, 6								
Connection size			Inlet	mm O.D.	22	22	22	
			Outlet	mm O.D.	22	22	22	
			Field pipe size	Inlet	mm I.D.	20	20	20
				Outlet	mm I.D.	20	20	20
Field drain pipe size			inch (mm)					
			O.D.1-1/4 (32)					
Drawing			External					
			KB94C45N					
			Wiring					
KB94C45J								
Refrigerant cycle			-					
Standard attachment			Document					
Installation Manual, Instruction Book								
Accessory			Washer, Drain hose, Tie band					
Optional parts			External heater adapter					
PAC-YU25HT								
Filter box			PAC-KE91TB-E					
Remarks			* Details on foundation work, duct work, insulation work, electrical wiring, power source switch, and other items shall be referred to the Installation Manual. * Due to continuing improvement, above specifications may be subject to change without notice.					

Notes:	Unit converter
1.Nominal cooling conditions Indoor: 80°F.D.B./67°F.W.B. (26.7°C.D.B./19.4°C.W.B.), Outdoor: 95°F.D.B. (35°C.D.B.) Pipe length: 25 ft. (7.6 m), Level difference: 0 ft. (0 m)	BTU/h =kW x 3.412
2.The values are measured at the factory setting of external static pressure.	cfm =m ³ /min x 35.31
3.Nominal heating conditions Indoor: 70°F.D.B. (21.1°C.D.B.), Outdoor: 47°F.D.B./43°F.W.B. (8.3°C.D.B./6.1°C.W.B.) Pipe length: 25 ft. (7.6 m), Level difference: 0 ft. (0 m)	lbs =kg/0.4536
4.The factory setting of external static pressure is shown without < >. Refer to "Fan characteristics curves", according to the external static pressure, in DATA BOOK for the usable range of air flow rate.	
5.Be sure to install a valve on the water inlet/outlet.	*Above specification data is subject to rounding variation.
6.Install a strainer (40 mesh or more) on the pipe next to the valve to remove the foreign matters.	

1. SPECIFICATIONS

Ceiling concealed (Medium static pressure type)

Model			PEFY-WL18NMAU-A	PEFY-WL24NMAU-A	PEFY-WL27NMAU-A	PEFY-WL30NMAU-A	
Power source			1-phase 208/230 V 60 Hz	1-phase 208/230 V 60 Hz	1-phase 208/230 V 60 Hz	1-phase 208/230 V 60 Hz	
Cooling capacity	*1	BTU/h	18,000	24,000	27,000	30,000	
		kW	5.3	7.0	7.9	8.8	
	*2	Power input	kW	0.102	0.142	0.142	0.142
	*2	Current input	A	0.98/0.89	1.24/1.12	1.24/1.12	1.24/1.12
Heating capacity	*3	BTU/h	20,000	27,000	30,000	34,000	
		kW	5.9	7.9	8.8	10.0	
	*2	Power input	kW	0.100	0.140	0.140	0.140
	*2	Current input	A	0.98/0.89	1.24/1.12	1.24/1.12	1.24/1.12
External finish			Galvanized steel plate	Galvanized steel plate	Galvanized steel plate	Galvanized steel plate	
External dimension H × W × D			inch	9-7/8 x 43-5/16 x 28-7/8	9-7/8 x 43-5/16 x 28-7/8	9-7/8 x 43-5/16 x 28-7/8	9-7/8 x 43-5/16 x 28-7/8
			mm	250 x 1,100 x 732	250 x 1,100 x 732	250 x 1,100 x 732	250 x 1,100 x 732
Net weight			lbs (kg)	67 (30)	67 (30)	67 (30)	67 (30)
Heat exchanger			Cross fin (Aluminum fin and copper tube)	Cross fin (Aluminum fin and copper tube)	Cross fin (Aluminum fin and copper tube)	Cross fin (Aluminum fin and copper tube)	
Water Volume			L	2.1	2.1	2.1	2.1
FAN			Sirocco fan x 2				
*4	Type × Quantity		Sirocco fan x 2				
	External static press.	in. WG	<0.14> - 0.20 - <0.28> - <0.40> - <0.60>				
		Pa	<35> - 50 - <70> - <100> - <150>				
	Motor Type		DC motor				
	Motor output		kW				
	Driving mechanism		Direct-driven by motor				
	Air flow rate		(Low-Mid-High)				
			cfm	512 - 636 - 742			
m ³ /min			14.5 - 18.0 - 21.0				
L/s		242 - 300 - 350					
Sound pressure level (measured in anechoic room)			(Low-Mid-High)				
*2 dB <A>			29-33-37				
Insulation material			EPS, Polyethylene foam, Urethane foam				
Air filter			PP honeycomb fabric.				
Protection device			Fuse				
Refrigerant control device			-				
Connectable HBC controller			CMB-WP-NU-AA, CMB-WP-NU-AB				
Water piping diameter *5, 6							
	Connection size	Inlet	mm O.D.	22	22	22	22
		Outlet	mm O.D.	22	22	22	22
	Field pipe size	Inlet	mm I.D.	20	30	30	30
		Outlet	mm I.D.	20	30	30	30
Field drain pipe size			inch (mm)				
			O.D.1-1/4 (32)				
Drawing	External		KB94C45N				
	Wiring		KB94C45J				
	Refrigerant cycle		-				
Standard attachment	Document		Installation Manual, Instruction Book				
	Accessory		Washer, Drain hose, Tie band				
Optional parts	External heater adapter		PAC-YU25HT				
	Filter box		PAC-KE93TB-E				
Remarks			* Details on foundation work, duct work, insulation work, electrical wiring, power source switch, and other items shall be referred to the Installation Manual. * Due to continuing improvement, above specifications may be subject to change without notice.				

Notes:	Unit converter
1. Nominal cooling conditions Indoor: 80°F D.B./67°F W.B. (26.7°C D.B./19.4°C W.B.), Outdoor: 95°F D.B. (35°C D.B.) Pipe length: 25 ft. (7.6 m), Level difference: 0 ft. (0 m)	BTU/h = kW x 3.412
2. The values are measured at the factory setting of external static pressure.	cfm = m ³ /min x 35.31
3. Nominal heating conditions Indoor: 70°F D.B. (21.1°C D.B.), Outdoor: 47°F D.B./43°F W.B. (8.3°C D.B./6.1°C W.B.) Pipe length: 25 ft. (7.6 m), Level difference: 0 ft. (0 m)	lbs = kg/0.4536
4. The factory setting of external static pressure is shown without < > . Refer to "Fan characteristics curves", according to the external static pressure, in DATA BOOK for the usable range of air flow rate.	
5. Be sure to install a valve on the water inlet/outlet.	
6. Install a strainer (40 mesh or more) on the pipe next to the valve to remove the foreign matters.	*Above specification data is subject to rounding variation.

1. SPECIFICATIONS

Ceiling concealed (Medium static pressure type)

PEFY-WL-NMAU-A

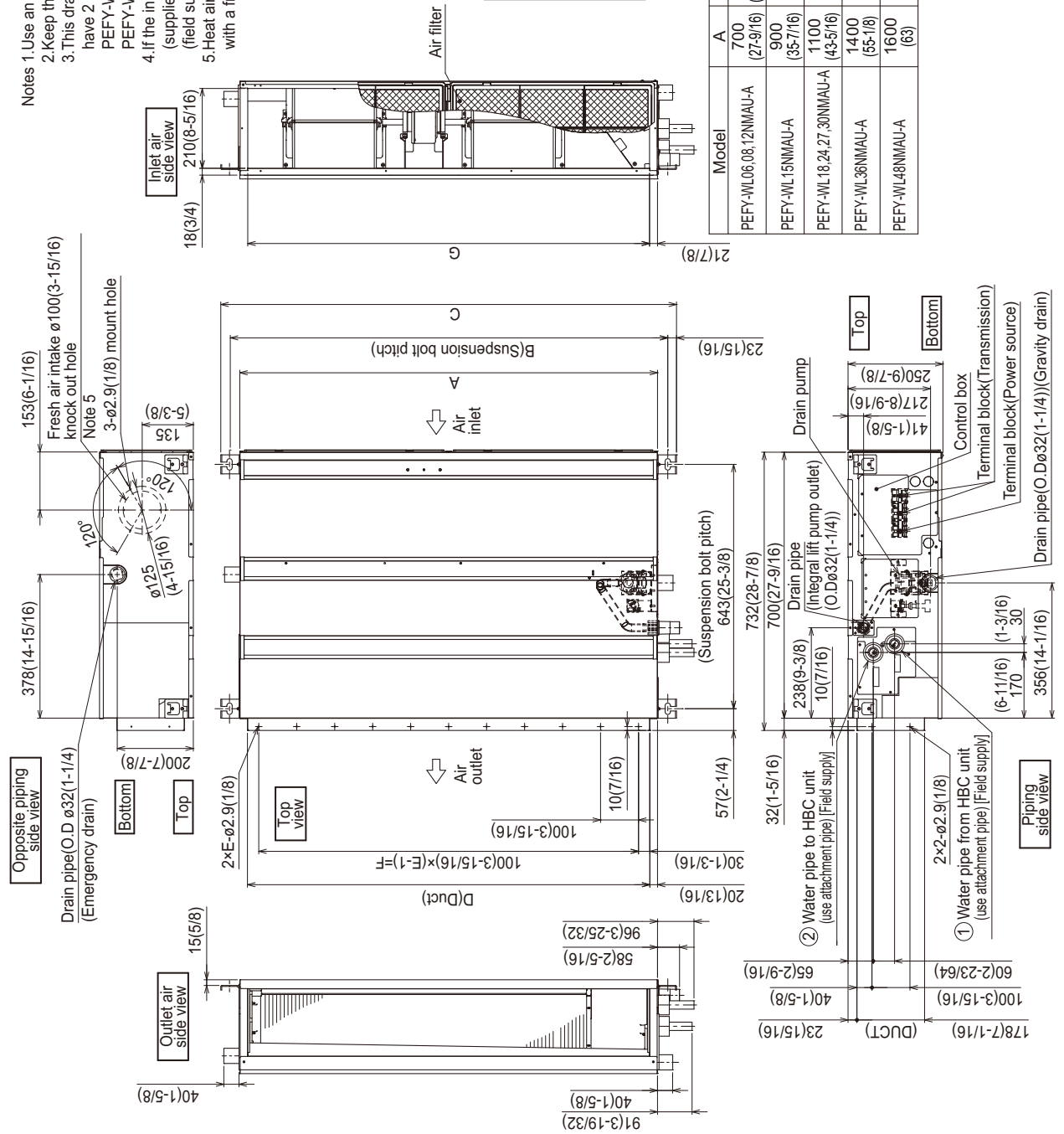
Model		PEFY-WL36NMAU-A	PEFY-WL48NMAU-A		
Power source		1-phase 208/230 V 60 Hz	1-phase 208/230 V 60 Hz		
Cooling capacity	*1 BTU/h	36,000	48,000		
	*1 kW	10.6	14.1		
	*2 Power input kW	0.222	0.252		
	*2 Current input A	2.01/1.82	2.29/2.07		
Heating capacity	*3 BTU/h	40,000	54,000		
	*3 kW	11.7	15.8		
	*2 Power input kW	0.220	0.250		
	*2 Current input A	2.01/1.82	2.29/2.07		
External finish		Galvanized steel plate	Galvanized steel plate		
External dimension H x W x D		inch	9-7/8 x 55-1/8 x 28-7/8	9-7/8 x 63 x 28-7/8	
		mm	250 x 1,400 x 732	250 x 1,600 x 732	
Net weight		lbs (kg)	82 (37)	91 (41)	
Heat exchanger		Cross fin (Aluminum fin and copper tube)	Cross fin (Aluminum fin and copper tube)		
Water Volume		L	2.7	3.7	
FAN		Type x Quantity	Sirocco fan x 3	Sirocco fan x 3	
*4	External static press.	in.WG	<0.14> - 0.20 - <0.28> - <0.40> - <0.60>	<0.14> - 0.20 - <0.28> - <0.40> - <0.60>	
		Pa	<35> - 50 - <70> - <100> - <150>	<35> - 50 - <70> - <100> - <150>	
Motor Type		DC motor	DC motor		
Motor output		kW	0.3	0.3	
Driving mechanism		Direct-driven by motor	Direct-driven by motor		
Air flow rate		(Low-Mid-High)	(Low-Mid-High)		
		cfm	883 - 1,077 - 1,271	989 - 1,201 - 1,413	
		m ³ /min	25.0 - 30.5 - 36.0	28.0 - 34.0 - 40.0	
		L/s	417 - 508 - 600	467 - 567 - 667	
Sound pressure level (measured in anechoic room)		(Low-Mid-High)	(Low-Mid-High)		
*2 dB <A>		35-39-43	34-38-42		
Insulation material		EPS, Polyethylene foam, Urethane foam	EPS, Polyethylene foam, Urethane foam		
Air filter		PP honeycomb fabric.	PP honeycomb fabric.		
Protection device		Fuse	Fuse		
Refrigerant control device		-	-		
Connectable HBC controller		CMB-WP-NU-AA, CMB-WP-NU-AB	CMB-WP-NU-AA, CMB-WP-NU-AB		
Water piping diameter *5, 6					
Connection size	Inlet	mm O.D.	22	22	
		mm O.D.	22	22	
	Field pipe size	Inlet	mm I.D.	30	30
		Outlet	mm I.D.	30	30
Field drain pipe size		inch (mm)	O.D.1-1/4 (32)	O.D.1-1/4 (32)	
Drawing	External	KB94C45N	KB94C45N		
	Wiring	KB94C45J	KB94C45J		
	Refrigerant cycle	-	-		
Standard attachment	Document	Installation Manual, Instruction Book	Installation Manual, Instruction Book		
	Accessory	Washer, Drain hose, Tie band	Washer, Drain hose, Tie band		
Optional parts	External heater adapter	PAC-YU25HT	PAC-YU25HT		
	Filter box	PAC-KE94TB-E	PAC-KE95TB-E		
Remarks		* Details on foundation work, duct work, insulation work, electrical wiring, power source switch, and other items shall be referred to the Installation Manual. * Due to continuing improvement, above specifications may be subject to change without notice.			

Notes:	Unit converter
1. Nominal cooling conditions Indoor: 80°F D.B./67°F W.B. (26.7°C D.B./19.4°C W.B.), Outdoor: 95°F D.B. (35°C D.B.) Pipe length: 25 ft. (7.6 m), Level difference: 0 ft. (0 m)	BTU/h = kW x 3.412
2. The values are measured at the factory setting of external static pressure.	cfm = m ³ /min x 35.31
3. Nominal heating conditions Indoor: 70°F D.B. (21.1°C D.B.), Outdoor: 47°F D.B./43°F W.B. (8.3°C D.B./6.1°C W.B.) Pipe length: 25 ft. (7.6 m), Level difference: 0 ft. (0 m)	lbs = kg/0.4536
4. The factory setting of external static pressure is shown without < >. Refer to "Fan characteristics curves", according to the external static pressure, in DATA BOOK for the usable range of air flow rate.	
5. Be sure to install a valve on the water inlet/outlet.	*Above specification data is subject to rounding variation.
6. Install a strainer (40 mesh or more) on the pipe next to the valve to remove the foreign matters.	

PEFY-WL06, 08, 12, 15, 18, 24, 27, 30, 36, 48NMAU-A

Unit: mm (in.)

1. Use an M10 screw for the suspension bolt (field supply).
2. Keep the service space for maintenance at the bottom.
3. This drawing is for PEFY-WL18-24-27-30NMAU-A models, which have 2 fans. PEFY-WL06-08-12NMAU-A models have 1 fan. PEFY-WL15NMAU-A model have 2 fans. PEFY-WL36-48NMAU-A models have 3 fans.
4. If the inlet duct is used, then install the filter (supplied with the unit), then install the filter (field supply) at the suction side.
5. Heat air to 0° (32°F) or higher when taking fresh air with a fresh air intake.



Model	Unit: mm	
	① Water pipe from HBC unit	② Water pipe to HBC unit
PEFY-WL06,08,12NMAU-A	ø22.0	ø22.0
PEFY-WL15NMAU-A		
PEFY-WL18,24,27,30NMAU-A		
PEFY-WL36NMAU-A		

Model	Unit: mm(in.)							
	A	B	C	D	E	F	G	
PEFY-WL06,08,12NMAU-A	700 (27-9/16)	754 (29-11/16)	800 (31-1/2)	660 (26)	7	600 (23-5/8)	658 (25-15/16)	
PEFY-WL15NMAU-A	900 (35-7/16)	954 (37-9/16)	1000 (39-3/8)	860 (33-7/8)	9	800 (31-1/2)	858 (33-13/16)	
PEFY-WL18,24,27,30NMAU-A	1100 (43-5/16)	1154 (45-7/16)	1200 (47-1/4)	1060 (41-3/4)	11	1000 (39-3/8)	1058 (41-11/16)	
PEFY-WL36NMAU-A	1400 (55-1/8)	1454 (57-1/4)	1500 (59-1/16)	1360 (53-9/16)	14	1300 (51-3/16)	1358 (53-1/2)	
PEFY-WL48NMAU-A	1600 (63)	1654 (65-1/8)	1700 (66-15/16)	1560 (61-7/16)	16	1500 (59-1/16)	1558 (61-3/8)	

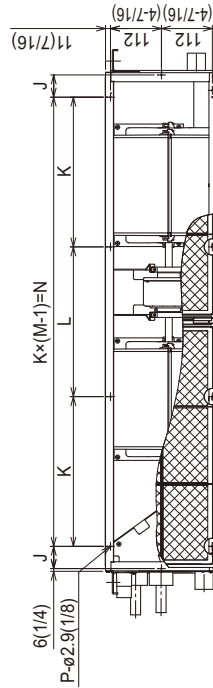
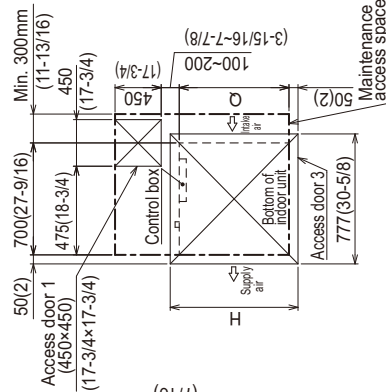
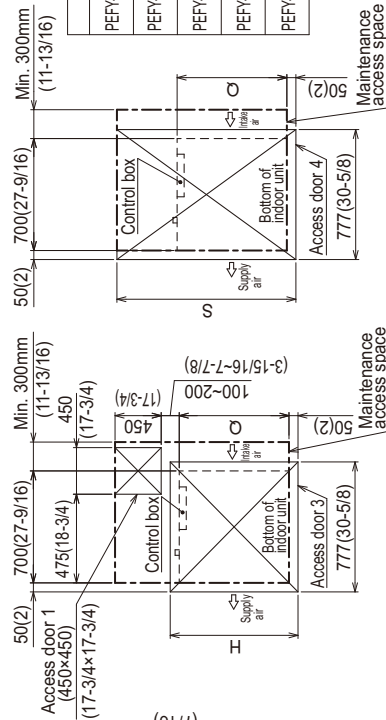
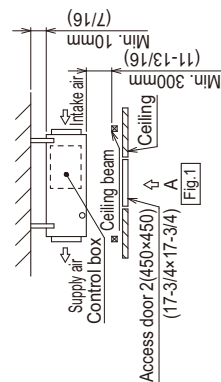
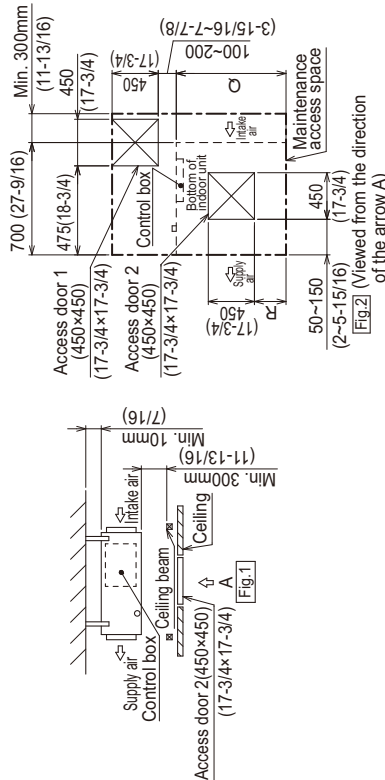
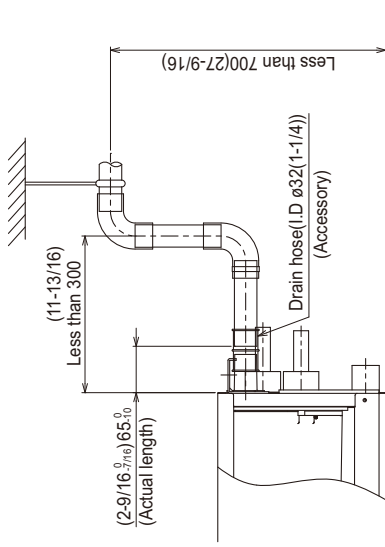
PEFY-WL-NMAU-A

PEFY-WL06, 08, 12, 15, 18, 24, 27, 30, 36, 48NMAU-A

Unit: mm (in.)

[Maintenance access space]
 Secure enough access space to allow for the maintenance, inspection, and replacement of the motor, fan, drain pump, heat exchanger, and control box in one of the following ways.
 Select an installation site for the indoor unit so that its maintenance access space will not be obstructed by beams or other objects.

- (1) When a space of 300mm or more is available below the unit between the unit and the ceiling. (Fig.1)
 -Create access door 1 and 2 (450×450mm each) as shown in Fig.2.
 (Access door 2 is not required if enough space is available below the unit for a maintenance worker to work in.)
- (2) When a space of less than 300mm is available below the unit between the unit and the ceiling.
 (At least 20mm of space should be left below the unit as shown in Fig.3.)
 -Create access door 1 diagonally below the control box and access door 3 below the unit as shown in Fig.4.
 or
 -Create access door 4 below the control box and the unit as shown in Fig.5.



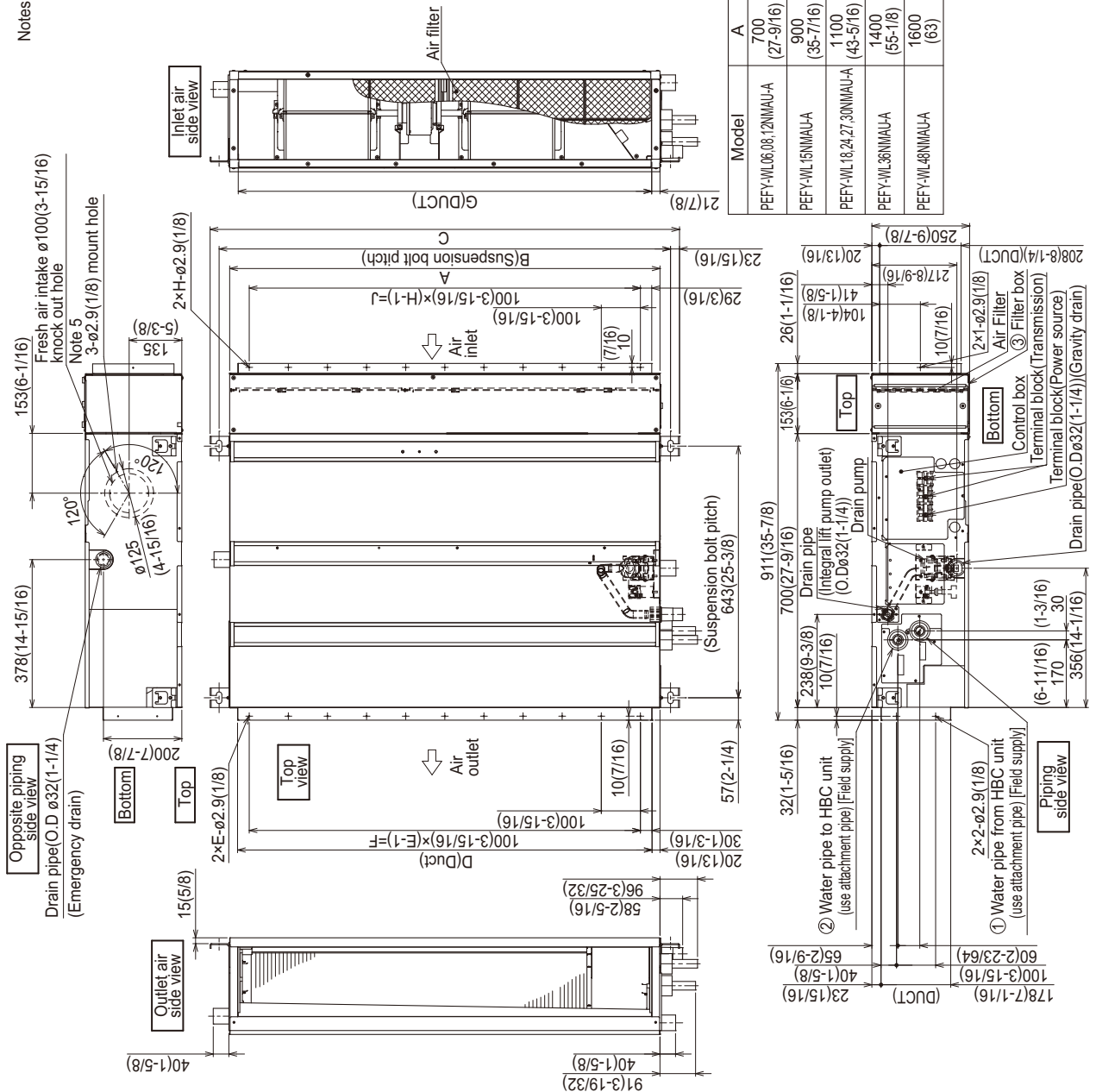
Model	H	J	K	L	M	N	P	Q	R	S
PEFY-WL06,08,12NMAU-A	800 (31-1/2)	44 (1-3/4)	150 (5-5/8)	300 (11-3/8)	10	780 (30-3/4)	700 (27-9/16)	50-150 (2-5/8-5-7/8)	1300 (51-3/8)	
PEFY-WL15NMAU-A	1000 (39-3/8)	54 (2-1/8)	260 (10-1/4)	4	990 (39-3/4)	900 (35-7/16)	150-250 (5-5/8-9-7/8)	1500 (59-1/8)	2200 (86-5/8)	
PEFY-WL18,24,27,30NMAU-A	1200 (47-1/4)	49 (1-5/8)	330 (13)	4	1280 (50-3/8)	1100 (43-3/8)	250-350 (9-7/8-13-3/8)	1700 (66-5/8)	2000 (78-3/4)	
PEFY-WL36NMAU-A	1500 (59-1/8)	54 (2-1/8)	320 (12-5/8)	5	1480 (58-3/8)	1400 (55-1/8)	400-500 (15-3/4-19-1/8)	2200 (86-5/8)	2200 (86-5/8)	
PEFY-WL48NMAU-A	1700 (66-5/8)	54 (2-1/8)	370 (14-5/8)	5	1600 (63)	1600 (63)	500-600 (19-1/8-23-5/8)	2200 (86-5/8)	2200 (86-5/8)	

Unit: mm(in.)

PEFY-WL06, 08, 12, 15, 18, 24, 27, 30, 36, 48NMAU-A with filter box

Unit: mm (in.)

1. Use an M10 screw for the suspension bolt (field supply).
2. Keep the service space for maintenance at the bottom.
3. This drawing is for PEFY-WL06-08-12NMAU-A models, which have 2 fans. PEFY-WL06-08-12NMAU-A models have 1 fan. PEFY-WL15NMAU-A model have 2 fans. PEFY-WL36-48NMAU-A models have 3 fans.
4. Use air filter installed with indoor unit.
5. Heat air to 0° (32°F) or higher when taking fresh air with a fresh air intake.



Model	① Water pipe from HBC unit	② Water pipe to HBC unit	③ Filter box
	PEFY-WL06,08,12NMAU-A	ø22.0	
PEFY-WL15NMAU-A	PAC-KE92TB-E		
PEFY-WL18,24,27,30NMAU-A	PAC-KE93TB-E		
PEFY-WL36NMAU-A	PAC-KE94TB-E		
PEFY-WL48NMAU-A	PAC-KE95TB-E		

Model	A	B	C	D	E	F	G	H	J
PEFY-WL06,08,12NMAU-A	700 (27-9/16)	754 (29-11/16)	800 (31-1/2)	660 (26)	7	600 (23-5/8)	658 (25-15/16)	7	600 (23-5/8)
PEFY-WL15NMAU-A	900	954 (37-9/16)	1000 (39-3/8)	860 (33-7/8)	9	800 (31-1/2)	858 (33-13/16)	9	800 (31-1/2)
PEFY-WL18,24,27,30NMAU-A	1100	1154 (45-7/16)	1200 (47-1/4)	1060 (41-3/4)	11	1000 (39-3/8)	1058 (41-11/16)	11	1000 (39-3/8)
PEFY-WL36NMAU-A	1400	1454 (57-1/4)	1500 (59-1/16)	1360 (53-9/16)	14	1300 (51-3/8)	1358 (53-1/2)	14	1300 (51-3/8)
PEFY-WL48NMAU-A	1600 (63)	1654 (65-1/8)	1700 (66-15/16)	1560 (61-7/16)	16	1500 (59-1/16)	1558 (61-3/8)	16	1500 (59-1/16)

PEFY-WL06, 08, 12, 15, 18, 24, 27, 30, 36, 48NMAU-A with filter box

Unit: mm (in.)

[Maintenance access space]
 Secure enough access space to allow for the maintenance, inspection, and replacement of the motor, fan, drain pump, heat exchanger, and control box in one of the following ways.
 Select an installation site for the indoor unit so that its maintenance access space will not be obstructed by beams or other objects.

(1) When a space of 300mm or more is available below the unit between the unit and the ceiling. (Fig.1)

-Create access door 1 and 2 (450×450mm each) as shown in Fig.2.
 (Access door 2 is not required if enough space is available below the unit for a maintenance worker to work in.)

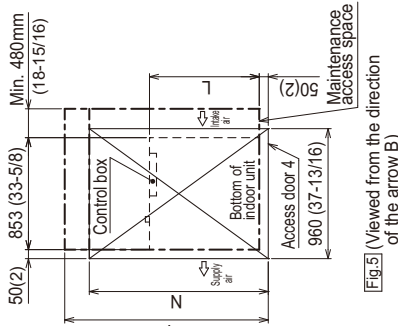
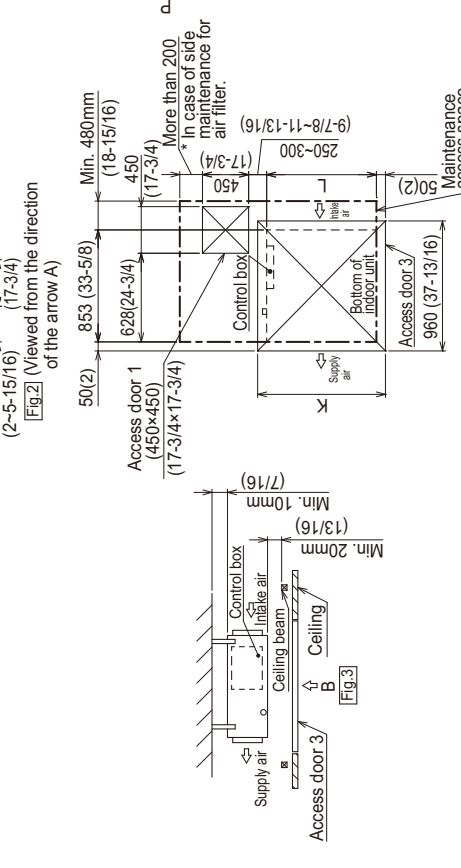
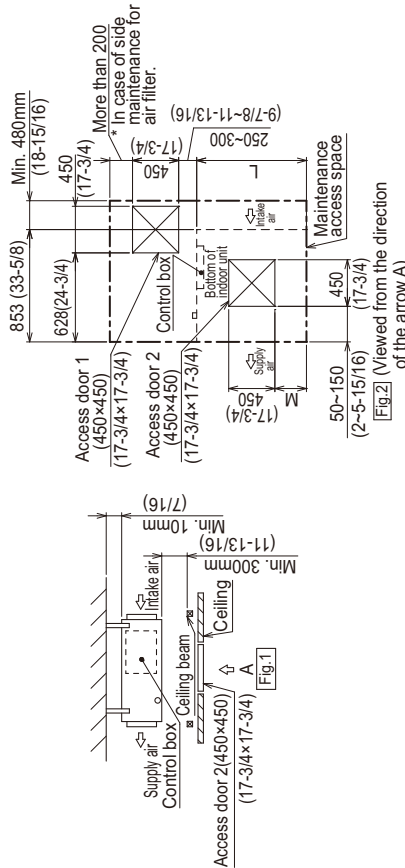
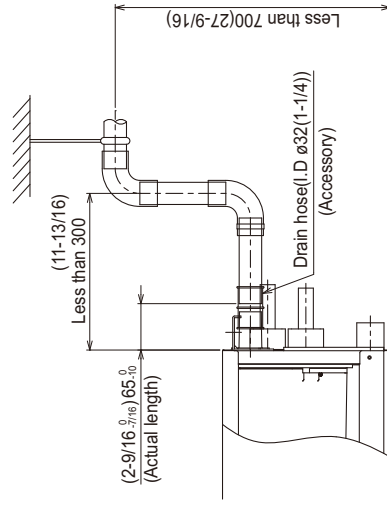
(2) When a space of less than 300mm is available below the unit between the unit and the ceiling.

(At least 20mm of space should be left below the unit as shown in Fig.3.)

-Create access door 1 diagonally below the control box and access door 3 below the unit as shown in Fig.4.

or

-Create access door 4 below the control box and the unit as shown in Fig.5.



* Dimension 'P' is in case of side maintenance for air filter.

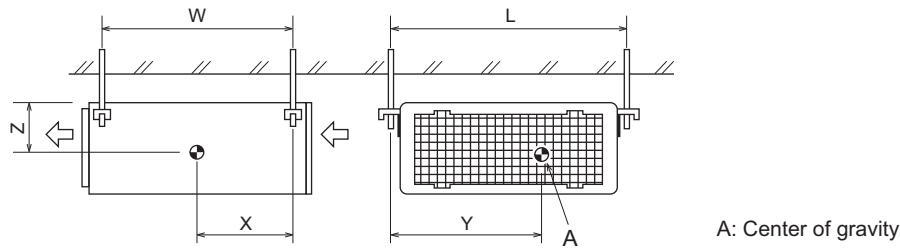
Unit: mm(in.)

Model	K	L	M	N	P*
PEFY-WL06,08,12NMAU-A	800 (31-1/2)	700 (27-9/16)	50~150 (2)~(5-15/16)	1300 (51-3/16)	1450 (57-1/8)
PEFY-WL15NMAU-A	1000 (39-3/8)	900 (35-7/16)	150~250 (5-15/16)~(9-7/8)	1500 (59-1/16)	1850 (72-7/8)
PEFY-WL18,24,27,30NMAU-A	1200 (47-1/4)	1100 (43-5/16)	250~350 (9-7/8)~(13-13/16)	1700 (66-15/16)	
PEFY-WL36NMAU-A	1500 (59-1/16)	1400 (55-1/8)	400~500 (15-3/4)~(19-11/16)	2000 (78-3/4)	2150 (84-11/16)
PEFY-WL48NMAU-A	1700 (66-15/16)	1600 (63)	500~600 (19-11/16)~(23-5/8)	2200 (86-5/8)	2550 (100-7/16)

Fig.5 (Viewed from the direction of the arrow B)

Fig.4 (Viewed from the direction of the arrow B)

PEFY-WL06, 08, 12, 15, 18, 24, 27, 30, 36, 48NMAU-A

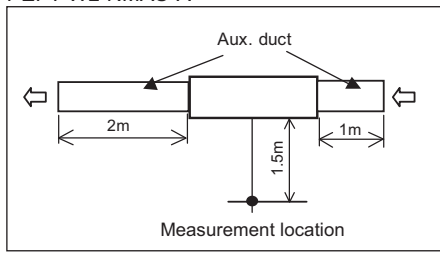


(mm) [in]

Model name	W	L	X	Y	Z
PEFY-WL06NMAU-A	643 [25-6/16]	754 [29-11/16]	330 [13]	300 [11-13/16]	130 [5-2/16]
PEFY-WL08NMAU-A	643 [25-6/16]	754 [29-11/16]	330 [13]	300 [11-13/16]	130 [5-2/16]
PEFY-WL12NMAU-A	643 [25-6/16]	754 [29-11/16]	330 [13]	300 [11-13/16]	130 [5-2/16]
PEFY-WL15NMAU-A	643 [25-6/16]	954 [37-9/16]	340 [13-7/16]	375 [14-13/16]	130 [5-2/16]
PEFY-WL18NMAU-A	643 [25-6/16]	1154 [45-7/16]	325 [12-13/16]	525 [20-11/16]	130 [5-2/16]
PEFY-WL24NMAU-A	643 [25-6/16]	1154 [45-7/16]	325 [12-13/16]	525 [20-11/16]	130 [5-2/16]
PEFY-WL27NMAU-A	643 [25-6/16]	1154 [45-7/16]	325 [12-13/16]	525 [20-11/16]	130 [5-2/16]
PEFY-WL30NMAU-A	643 [25-6/16]	1154 [45-7/16]	325 [12-13/16]	525 [20-11/16]	130 [5-2/16]
PEFY-WL36NMAU-A	643 [25-6/16]	1454 [57-4/16]	330 [13]	675 [26-10/16]	130 [5-2/16]
PEFY-WL48NMAU-A	643 [25-6/16]	1654 [65-2/16]	332 [13-2/16]	725 [28-9/16]	130 [5-2/16]

5-1. Sound levels

PEFY-WL-NMAU-A



* Measured in anechoic room.

Sound level at anechoic room : Low-Mid-High

Model	Sound level dB(A)				
	35Pa	50Pa	70Pa	100Pa	150Pa
PEFY-WL06NMAU-A	22-26-29	24-28-30	26-30-34	28-32-36	32-36-40
PEFY-WL08NMAU-A	22-26-29	24-28-30	26-30-34	28-32-36	32-36-40
PEFY-WL12NMAU-A	26-29-32	26-30-34	28-32-36	29-33-37	32-36-40
PEFY-WL15NMAU-A	25-29-32	27-31-34	28-32-36	30-34-38	34-38-42
PEFY-WL18NMAU-A	28-33-36	29-33-37	31-35-39	33-38-42	36-41-45
PEFY-WL24NMAU-A	31-35-39	31-35-39	32-37-40	34-38-42	37-41-45
PEFY-WL27NMAU-A	31-35-39	31-35-39	32-37-40	34-38-42	37-41-45
PEFY-WL30NMAU-A	31-35-39	31-35-39	32-37-40	34-38-42	37-41-45
PEFY-WL36NMAU-A	34-39-42	35-39-43	36-40-44	38-42-46	41-45-49
PEFY-WL48NMAU-A	33-37-41	34-38-42	35-39-43	37-41-45	39-43-47

PEFY-WL-NMAU-A

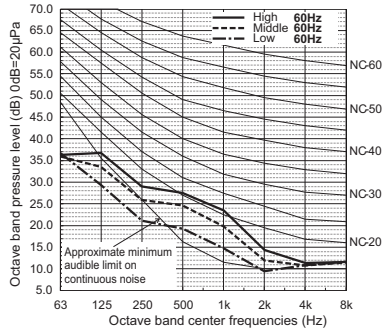
PEFY-WL-NMAU-A

5-2. NC curves

PEFY-WL06,08NMAU-A

External Static Pressure: 35Pa [0.14in.WG]

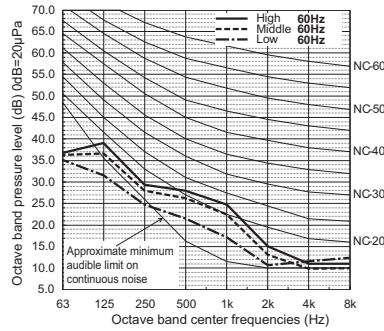
Power Source: 208-230V



PEFY-WL06,08NMAU-A

External Static Pressure: 50Pa [0.20in.WG]

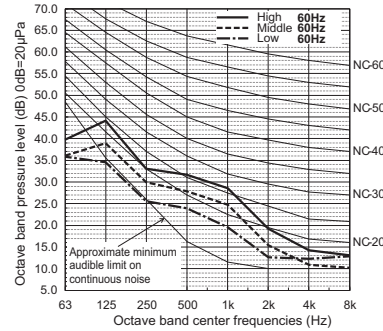
Power Source: 208-230V



PEFY-WL06,08NMAU-A

External Static Pressure: 70Pa [0.28in.WG]

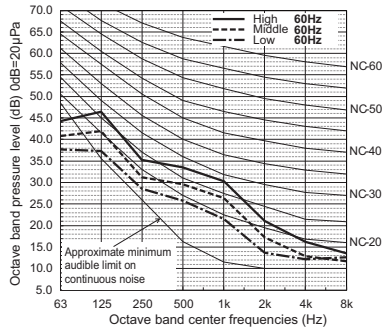
Power Source: 208-230V



PEFY-WL06,08NMAU-A

External Static Pressure: 100Pa [0.40in.WG]

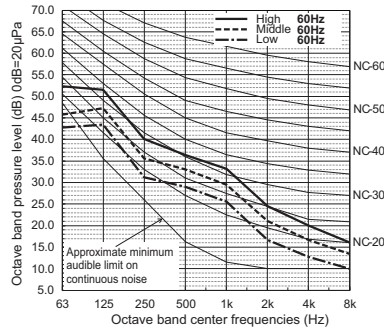
Power Source: 208-230V



PEFY-WL06,08NMAU-A

External Static Pressure: 150Pa [0.60in.WG]

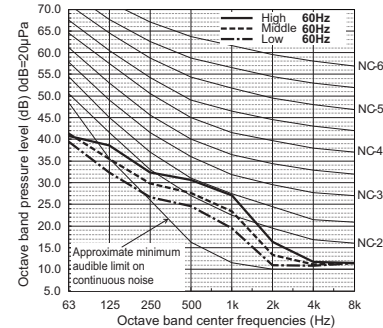
Power Source: 208-230V



PEFY-WL12NMAU-A

External Static Pressure: 35Pa [0.14in.WG]

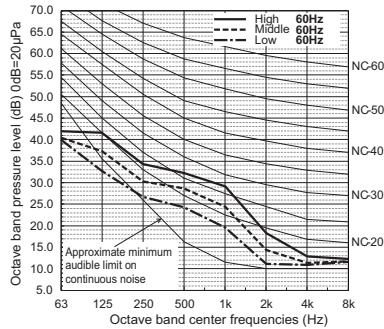
Power Source: 208-230V



PEFY-WL12NMAU-A

External Static Pressure: 50Pa [0.20in.WG]

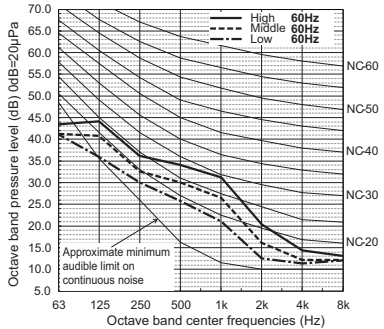
Power Source: 208-230V



PEFY-WL12NMAU-A

External Static Pressure: 70Pa [0.28in.WG]

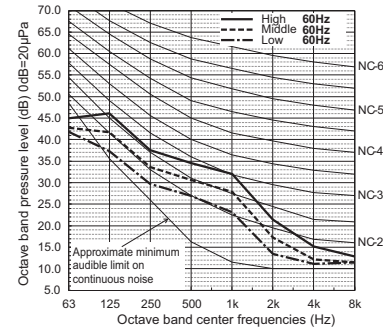
Power Source: 208-230V



PEFY-WL12NMAU-A

External Static Pressure: 100Pa [0.40in.WG]

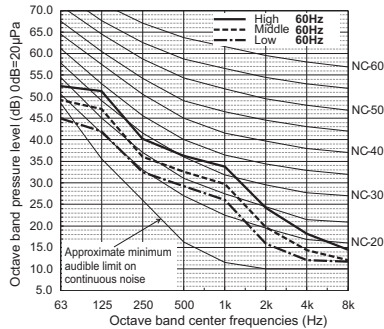
Power Source: 208-230V



PEFY-WL12NMAU-A

External Static Pressure: 150Pa [0.60in.WG]

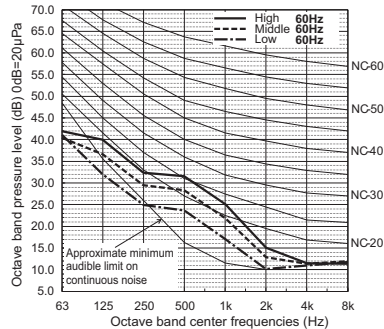
Power Source: 208-230V



PEFY-WL15NMAU-A

External Static Pressure: 35Pa [0.14in.WG]

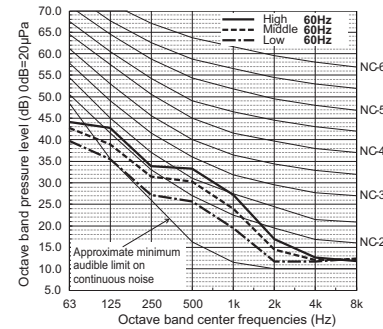
Power Source: 208-230V

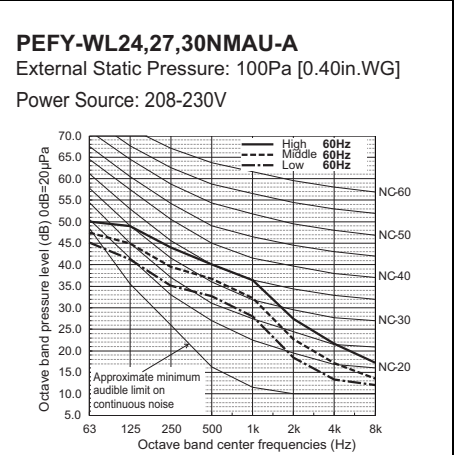
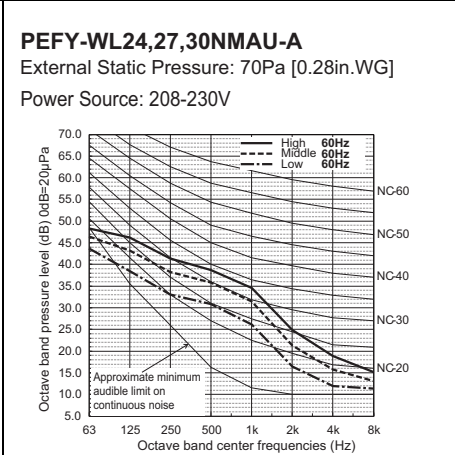
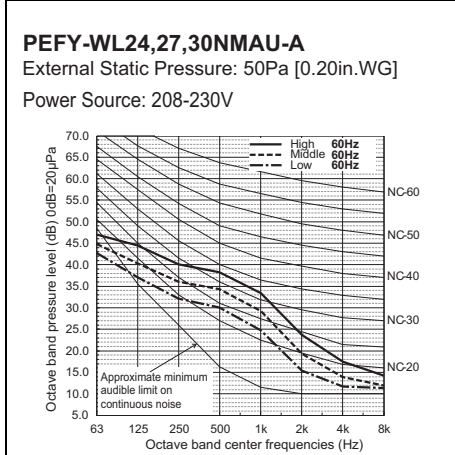
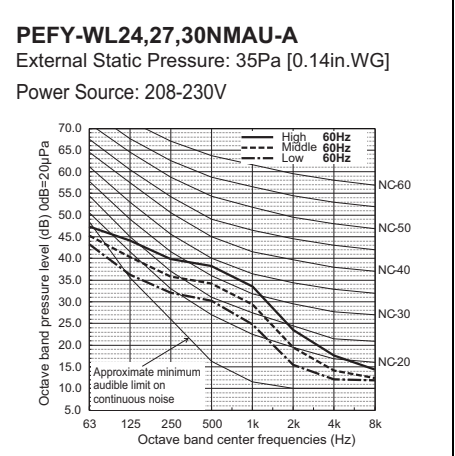
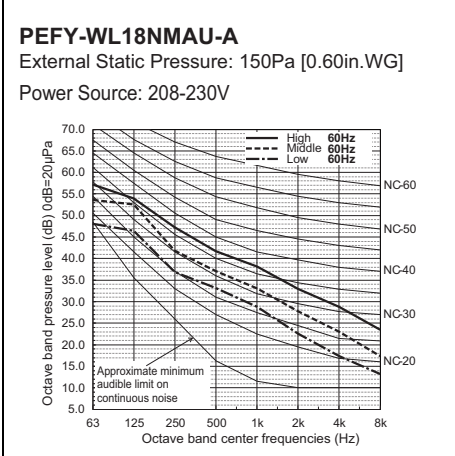
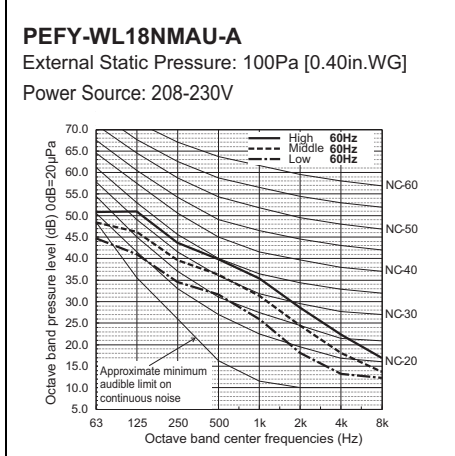
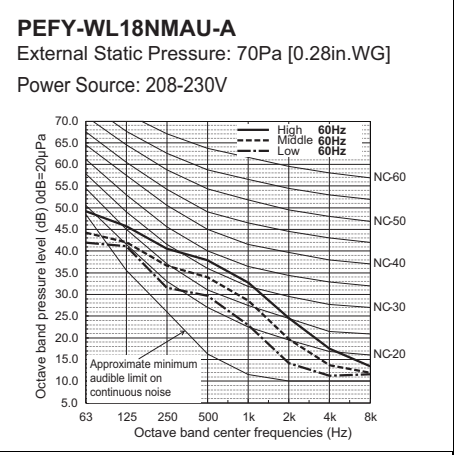
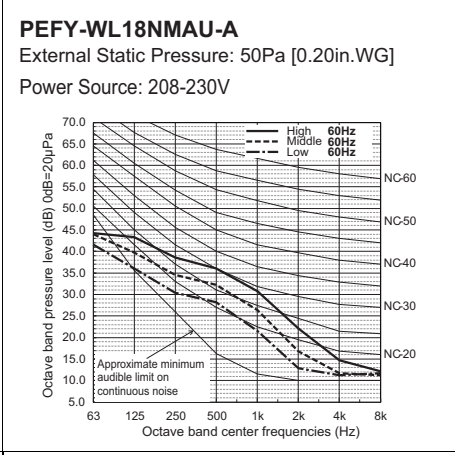
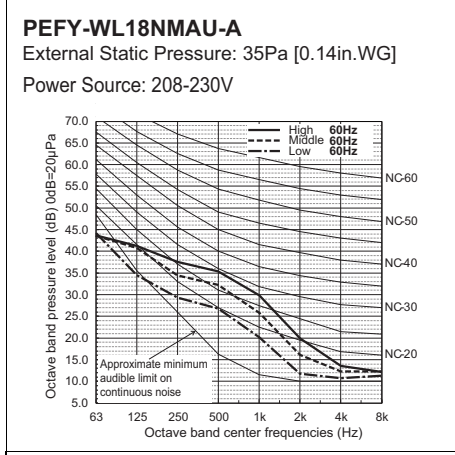
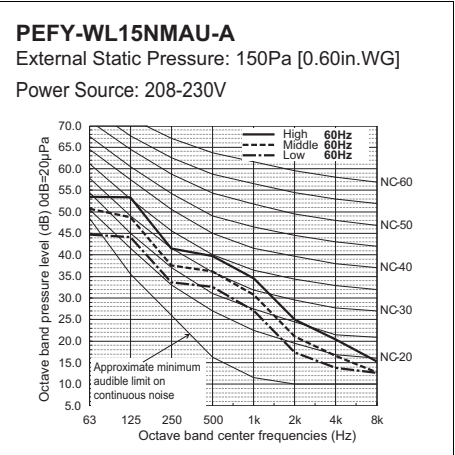
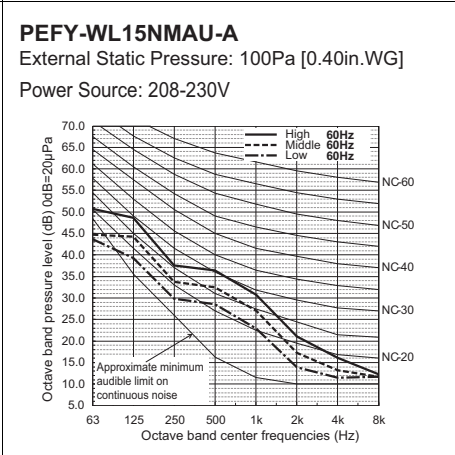
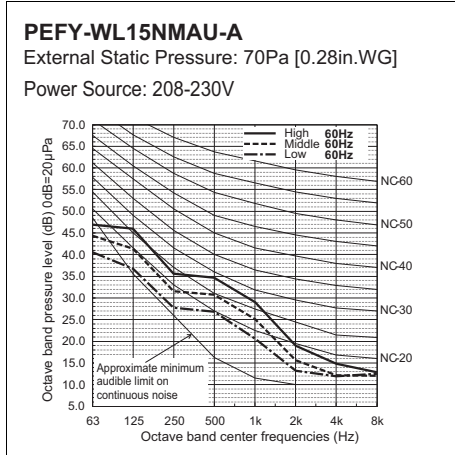


PEFY-WL15NMAU-A

External Static Pressure: 50Pa [0.20in.WG]

Power Source: 208-230V



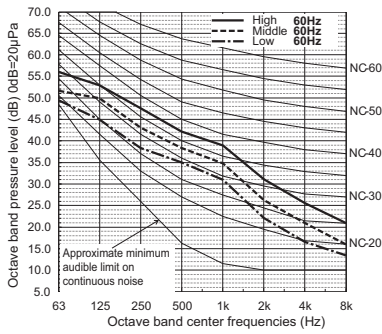


5. SOUND LEVELS

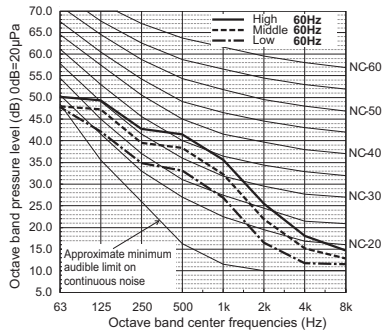
Ceiling concealed (Medium static pressure type)

PEFY-WL-NMAU-A

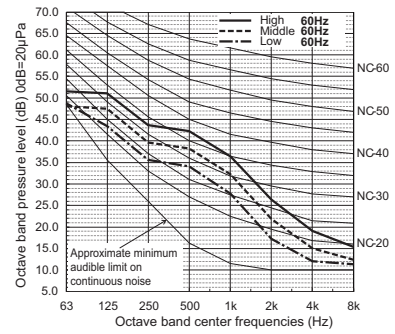
PEFY-WL24,27,30NMAU-A
 External Static Pressure: 150Pa [0.60in.WG]
 Power Source: 208-230V



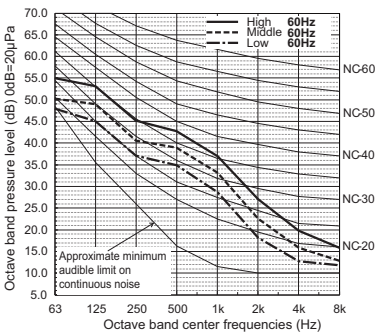
PEFY-WL36NMAU-A
 External Static Pressure: 35Pa [0.14in.WG]
 Power Source: 208-230V



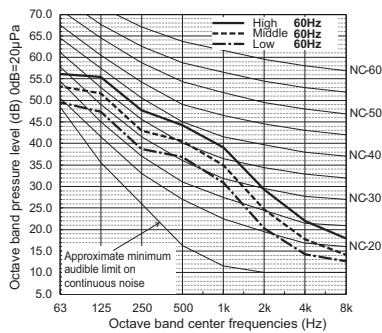
PEFY-WL36NMAU-A
 External Static Pressure: 50Pa [0.20in.WG]
 Power Source: 208-230V



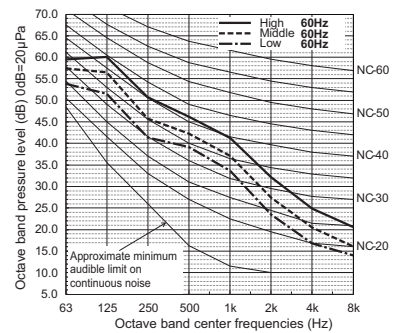
PEFY-WL36NMAU-A
 External Static Pressure: 70Pa [0.28in.WG]
 Power Source: 208-230V



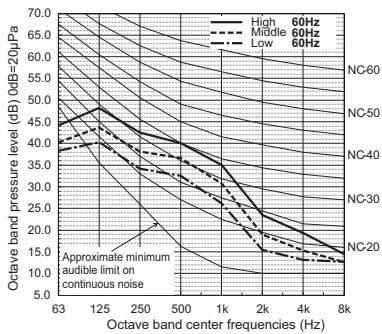
PEFY-WL36NMAU-A
 External Static Pressure: 100Pa [0.40in.WG]
 Power Source: 208-230V



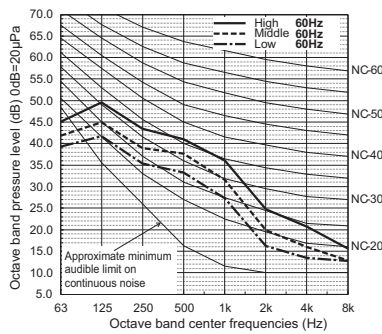
PEFY-WL36NMAU-A
 External Static Pressure: 150Pa [0.60in.WG]
 Power Source: 208-230V



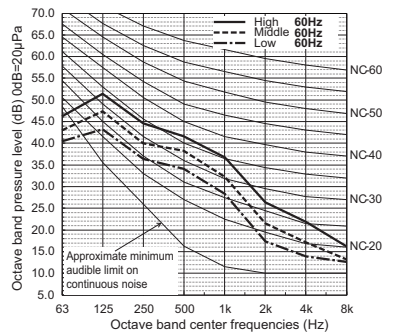
PEFY-WL48NMAU-A
 External Static Pressure: 35Pa [0.14in.WG]
 Power Source: 208-230V



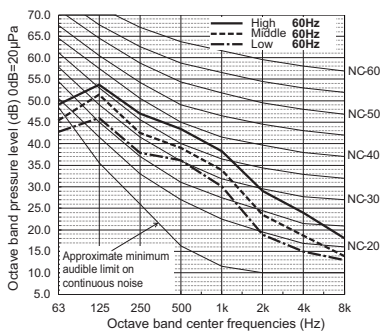
PEFY-WL48NMAU-A
 External Static Pressure: 50Pa [0.20in.WG]
 Power Source: 208-230V



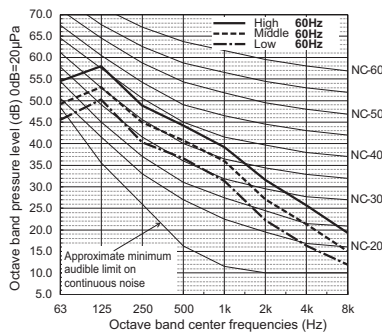
PEFY-WL48NMAU-A
 External Static Pressure: 70Pa [0.28in.WG]
 Power Source: 208-230V



PEFY-WL48NMAU-A
 External Static Pressure: 100Pa [0.40in.WG]
 Power Source: 208-230V



PEFY-WL48NMAU-A
 External Static Pressure: 150Pa [0.60in.WG]
 Power Source: 208-230V



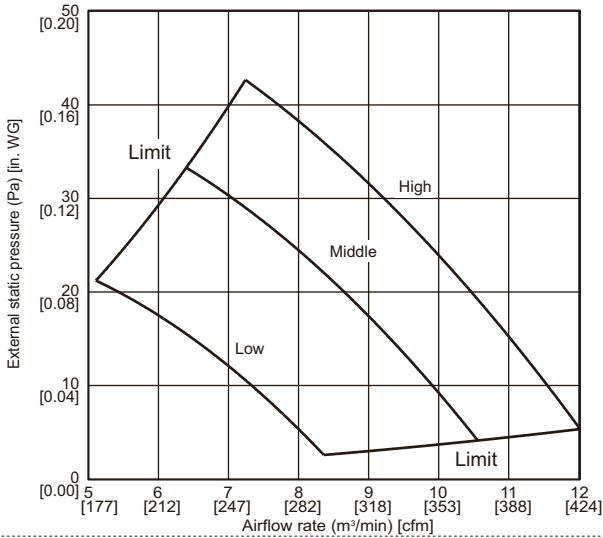
6. FAN CHARACTERISTICS CURVES

Ceiling concealed (Medium static pressure type)

PEFY-WL-NMAU-A

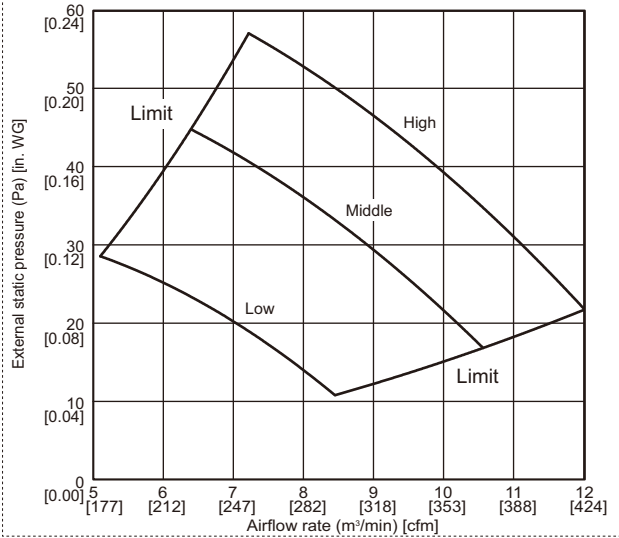
PEFY-WL06,08NMAU-A

External static pressure : 35Pa [0.14in.WG]
Power source : 208-230V



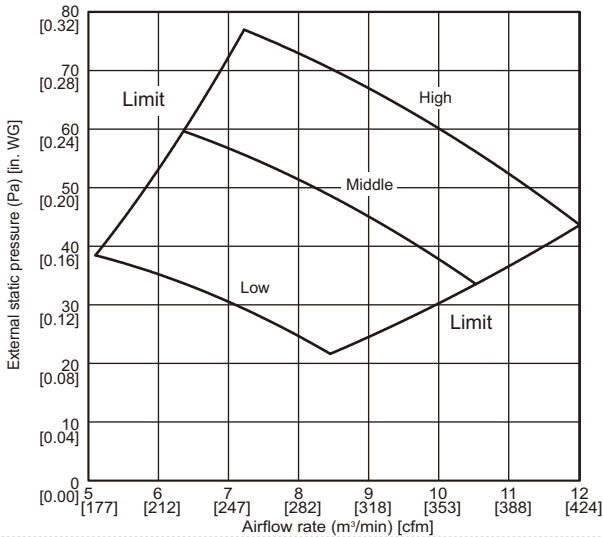
PEFY-WL06,08NMAU-A

External static pressure : 50Pa [0.20in.WG]
Power source : 208-230V



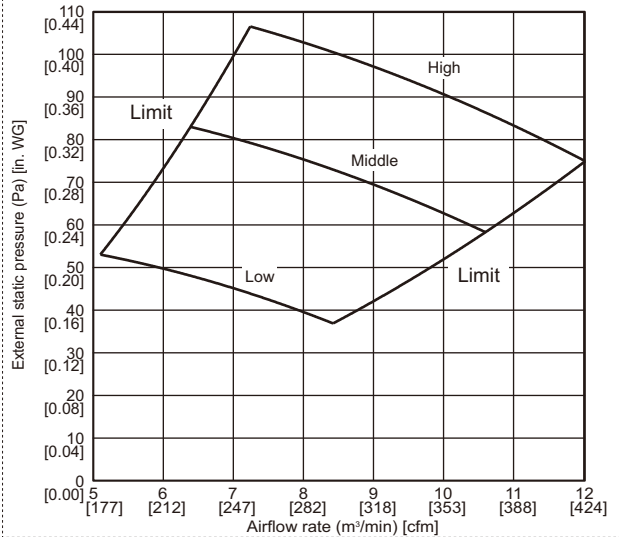
PEFY-WL06,08NMAU-A

External static pressure : 70Pa [0.28in.WG]
Power source : 208-230V



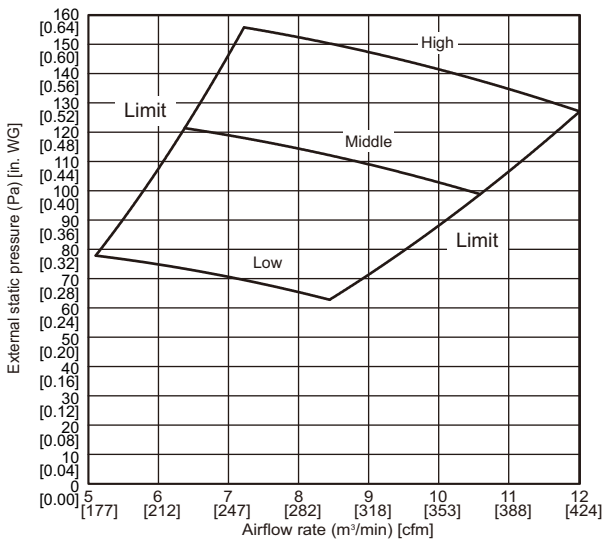
PEFY-WL06,08NMAU-A

External static pressure : 100Pa [0.40in.WG]
Power source : 208-230V



PEFY-WL06,08NMAU-A

External static pressure : 150Pa [0.60in.WG]
Power source : 208-230V



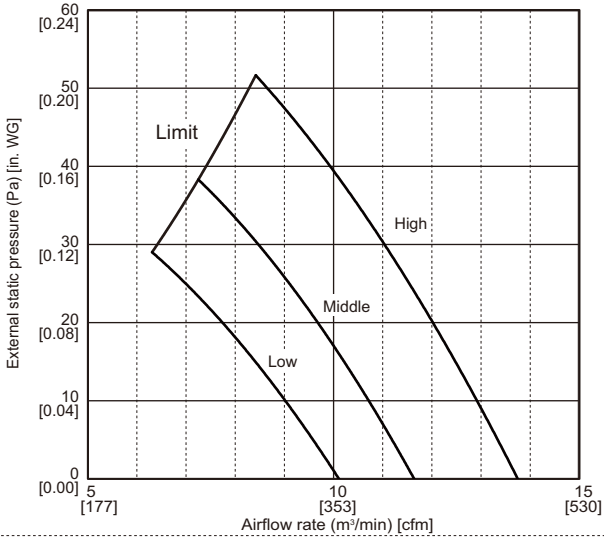
6. FAN CHARACTERISTICS CURVES

Ceiling concealed (Medium static pressure type)

PEFY-WL-NMAU-A

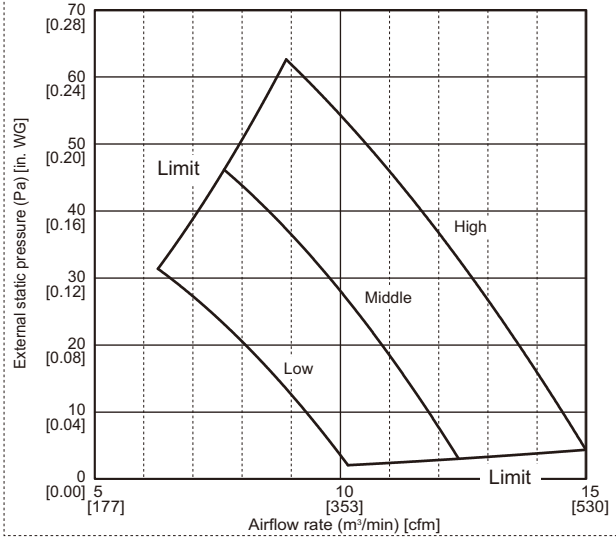
PEFY-WL12NMAU-A

External static pressure : 35Pa [0.14in.WG]
Power source : 208-230V



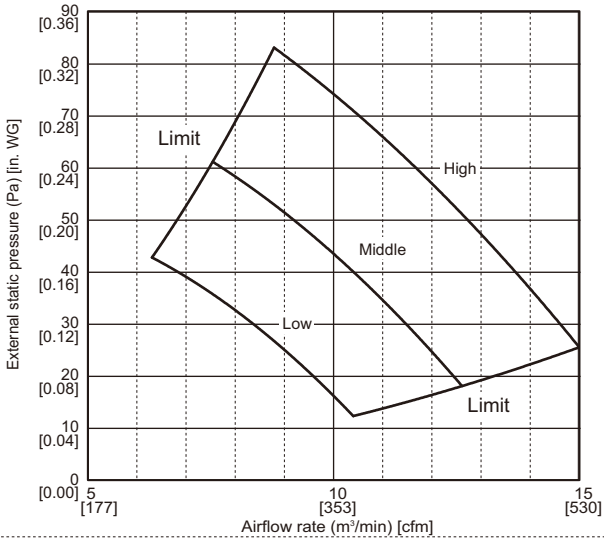
PEFY-WL12NMAU-A

External static pressure : 50Pa [0.20in.WG]
Power source : 208-230V



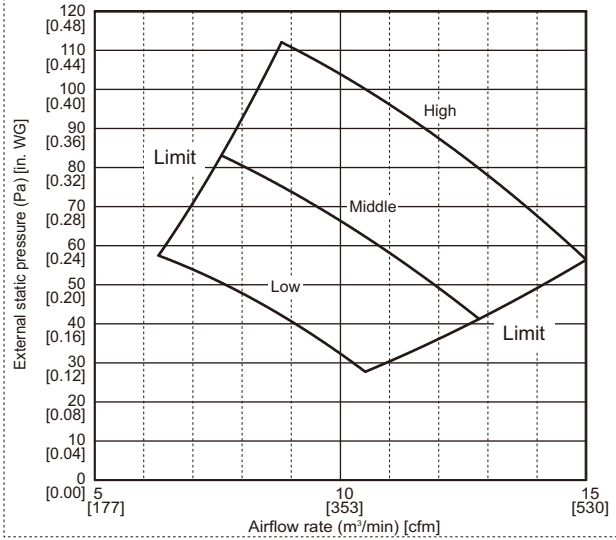
PEFY-WL12NMAU-A

External static pressure : 70Pa [0.28in.WG]
Power source : 208-230V



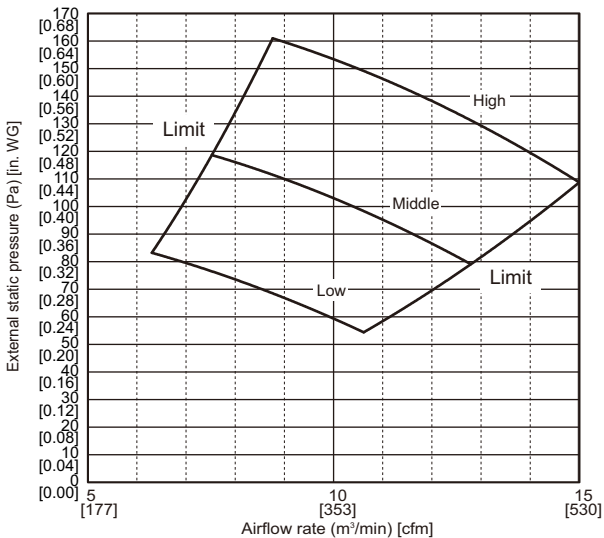
PEFY-WL12NMAU-A

External static pressure : 100Pa [0.40in.WG]
Power source : 208-230V



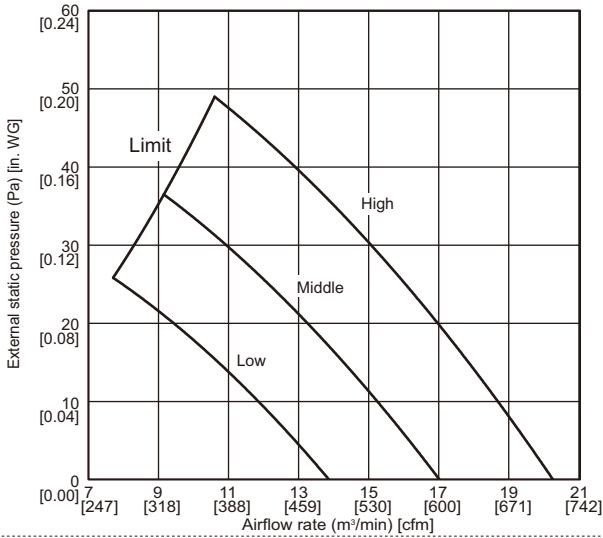
PEFY-WL12NMAU-A

External static pressure : 150Pa [0.60in.WG]
Power source : 208-230V



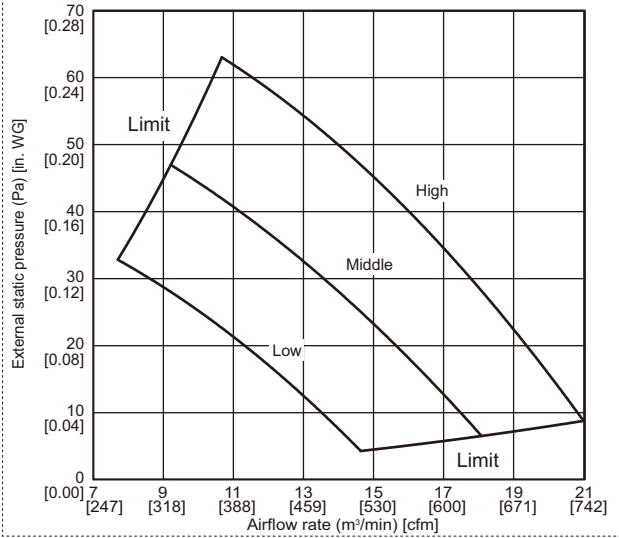
PEFY-WL15NMAU-A

External static pressure : 35Pa [0.14in.WG]
Power source : 208-230V



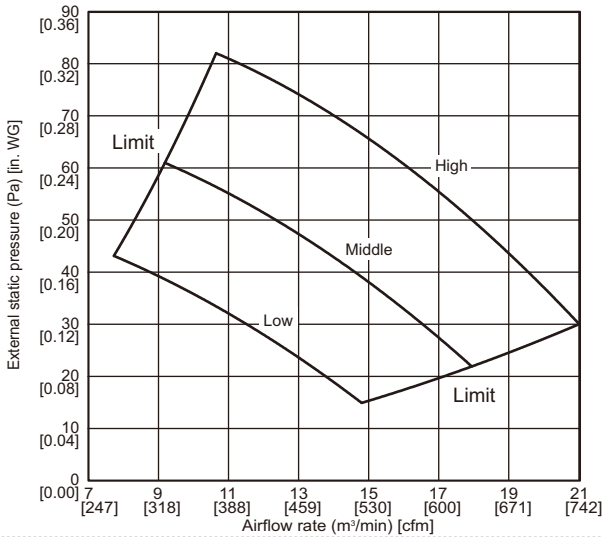
PEFY-WL15NMAU-A

External static pressure : 50Pa [0.20in.WG]
Power source : 208-230V



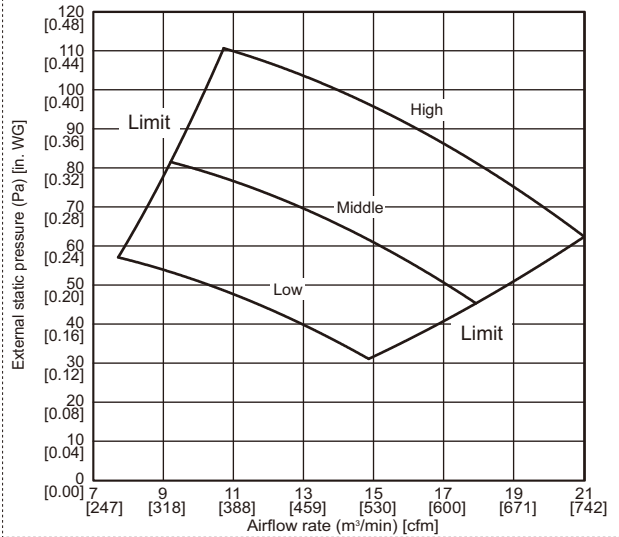
PEFY-WL15NMAU-A

External static pressure : 70Pa [0.28in.WG]
Power source : 208-230V



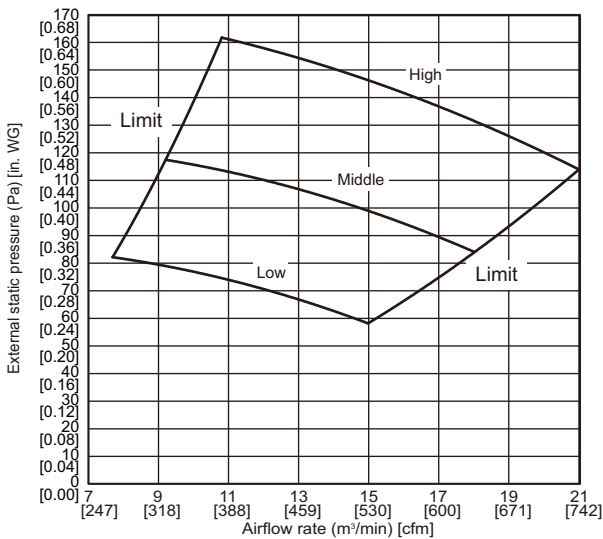
PEFY-WL15NMAU-A

External static pressure : 100Pa [0.40in.WG]
Power source : 208-230V



PEFY-WL15NMAU-A

External static pressure : 150Pa [0.60in.WG]
Power source : 208-230V



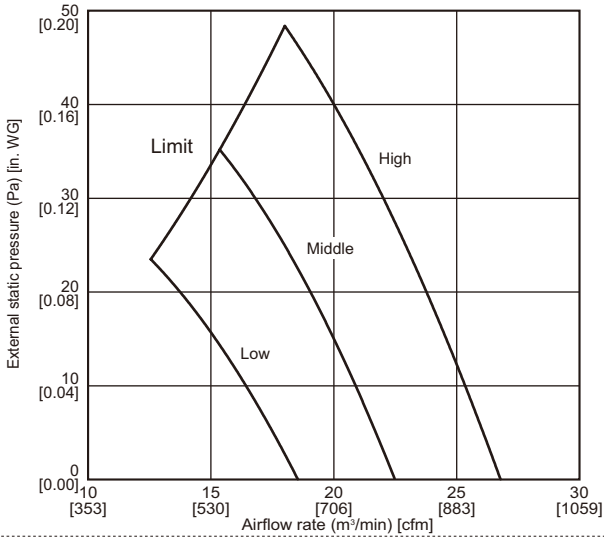
6. FAN CHARACTERISTICS CURVES

Ceiling concealed (Medium static pressure type)

PEFY-WL-NMAU-A

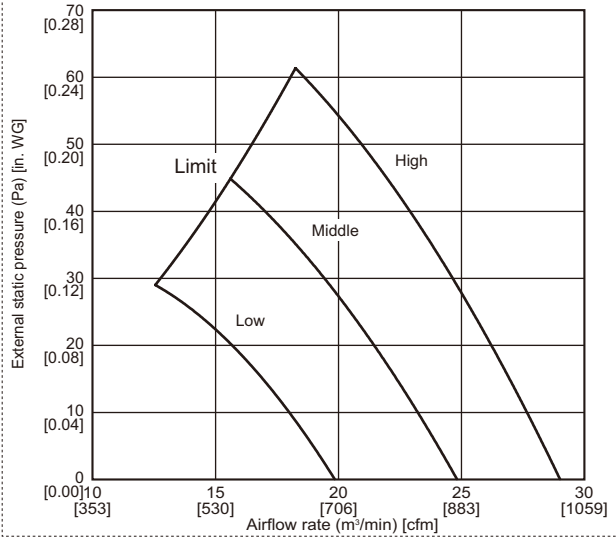
PEFY-WL18NMAU-A

External static pressure : 35Pa [0.14in.WG]
Power source : 208-230V



PEFY-WL18NMAU-A

External static pressure : 50Pa [0.20in.WG]
Power source : 208-230V



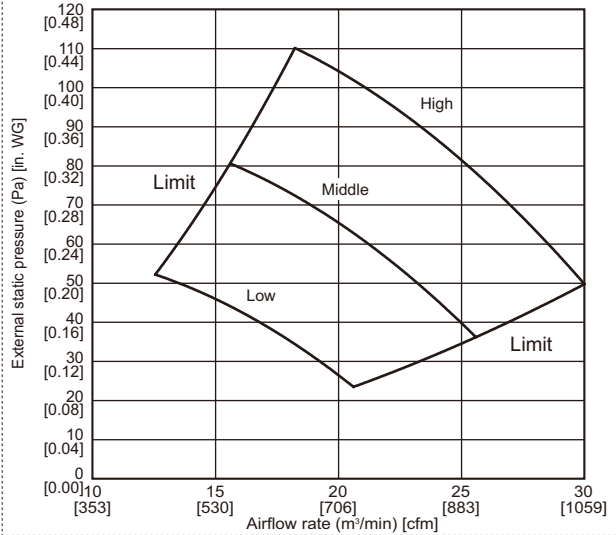
PEFY-WL18NMAU-A

External static pressure : 70Pa [0.28in.WG]
Power source : 208-230V



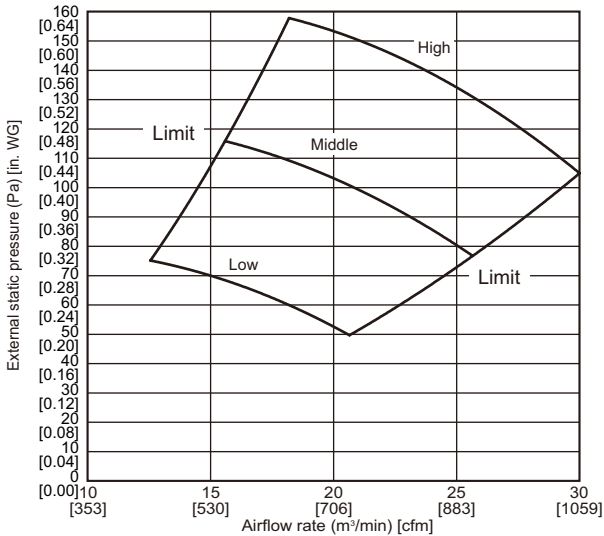
PEFY-WL18NMAU-A

External static pressure : 100Pa [0.40in.WG]
Power source : 208-230V



PEFY-WL18NMAU-A

External static pressure : 150Pa [0.60in.WG]
Power source : 208-230V



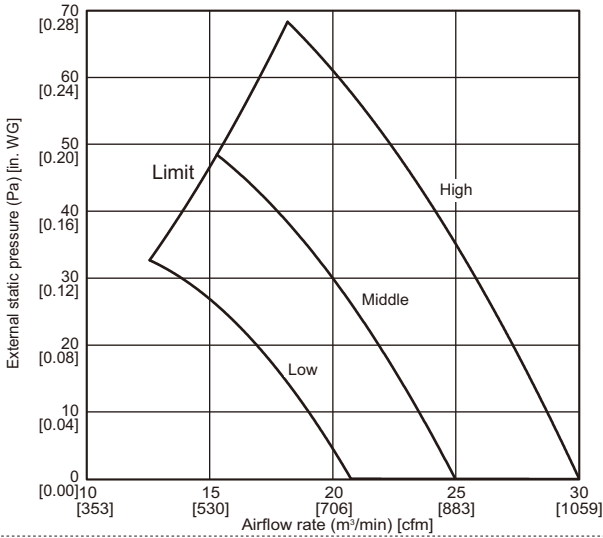
6. FAN CHARACTERISTICS CURVES

Ceiling concealed (Medium static pressure type)

PEFY-WL-NMAU-A

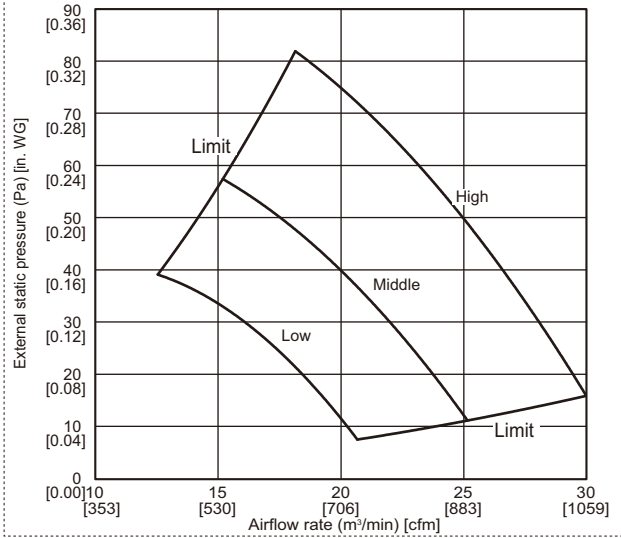
PEFY-WL24,27,30NMAU-A

External static pressure : 35Pa [0.14in.WG]
Power source : 208-230V



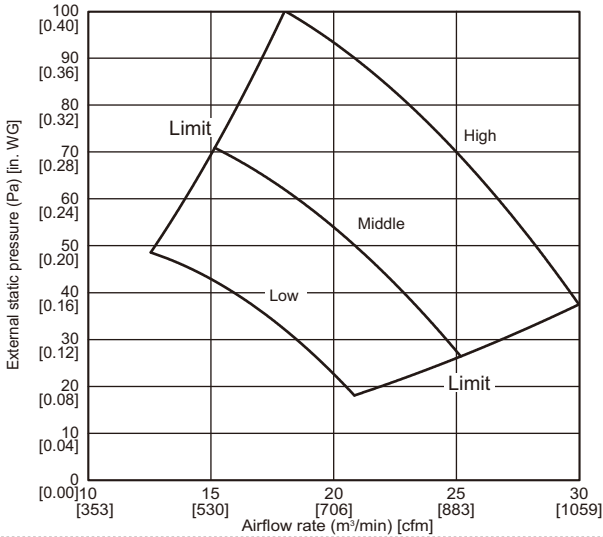
PEFY-WL24,27,30NMAU-A

External static pressure : 50Pa [0.20in.WG]
Power source : 208-230V



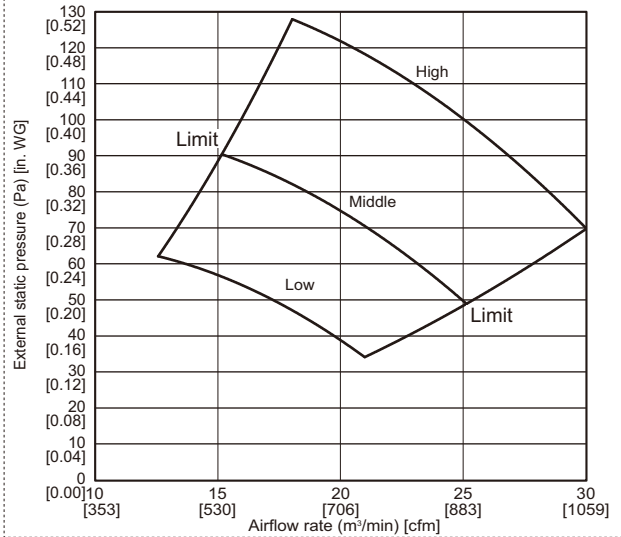
PEFY-WL24,27,30NMAU-A

External static pressure : 70Pa [0.28in.WG]
Power source : 208-230V



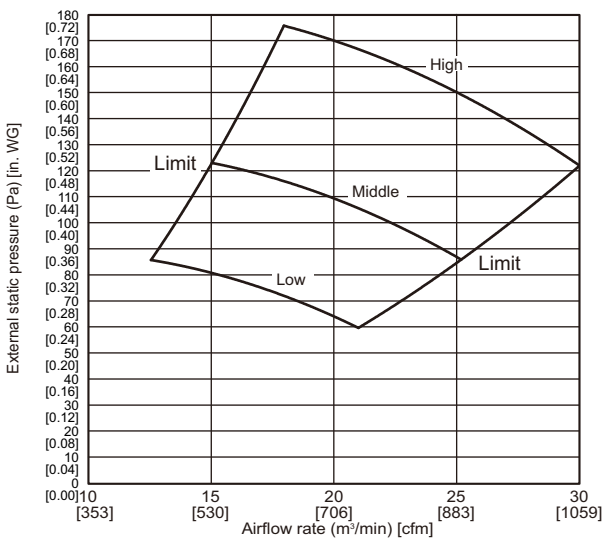
PEFY-WL24,27,30NMAU-A

External static pressure : 100Pa [0.40in.WG]
Power source : 208-230V



PEFY-WL24,27,30NMAU-A

External static pressure : 150Pa [0.60in.WG]
Power source : 208-230V



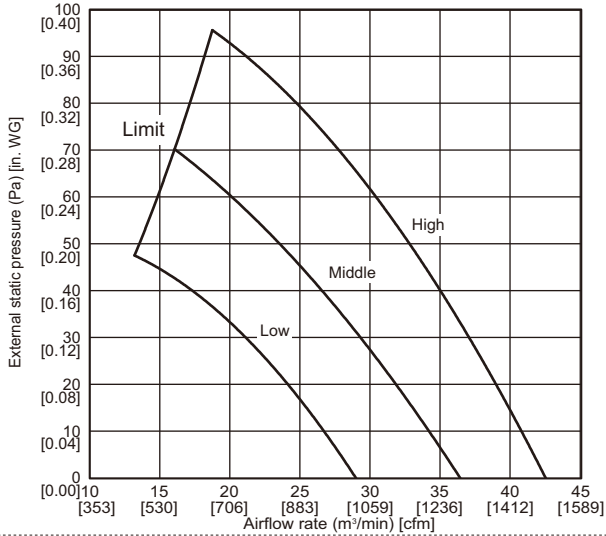
6. FAN CHARACTERISTICS CURVES

Ceiling concealed (Medium static pressure type)

PEFY-WL-NMAU-A

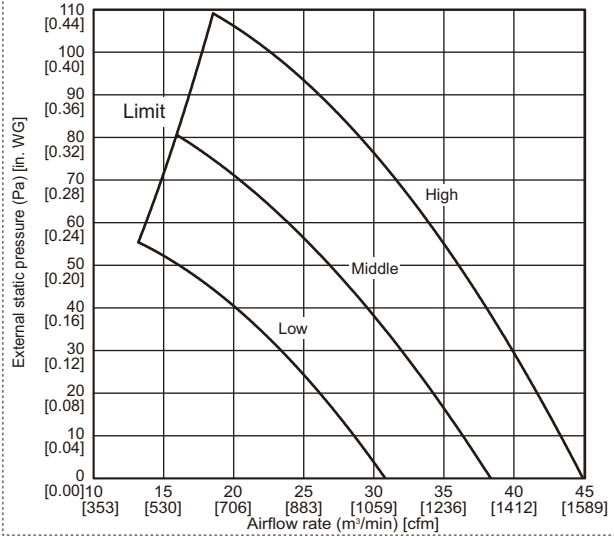
PEFY-WL36NMAU-A

External static pressure : 35Pa [0.14in.WG]
Power source : 208-230V



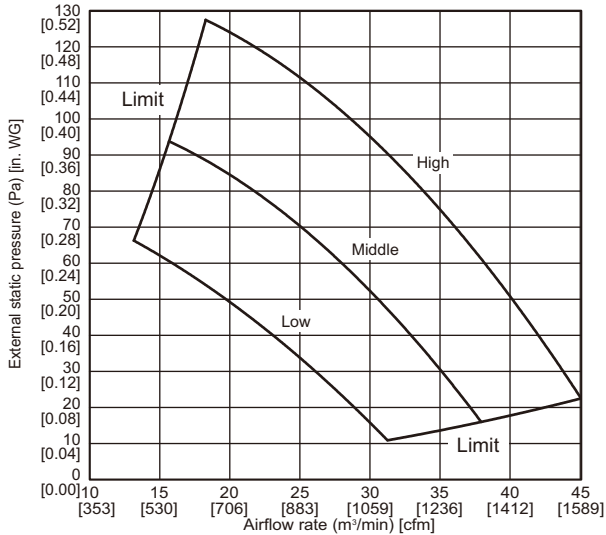
PEFY-WL36NMAU-A

External static pressure : 50Pa [0.20in.WG]
Power source : 208-230V



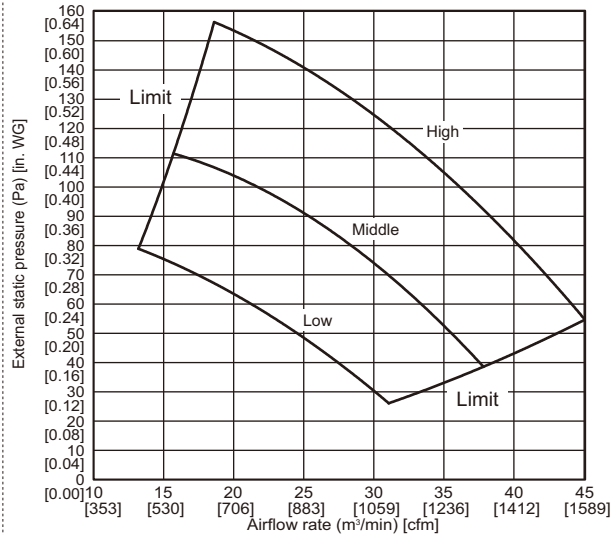
PEFY-WL36NMAU-A

External static pressure : 70Pa [0.28in.WG]
Power source : 208-230V



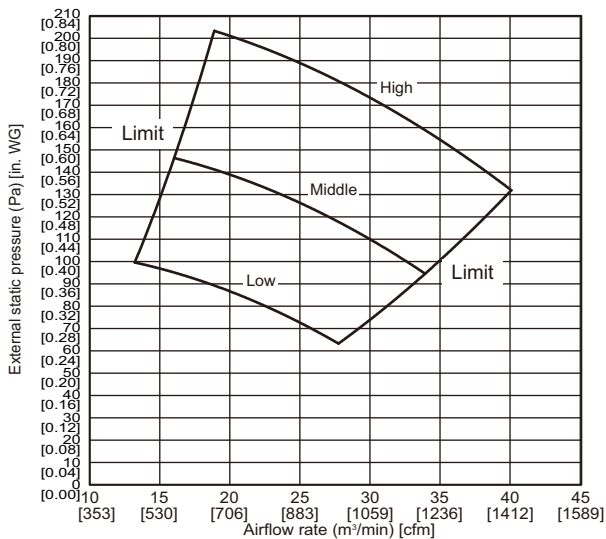
PEFY-WL36NMAU-A

External static pressure : 100Pa [0.40in.WG]
Power source : 208-230V



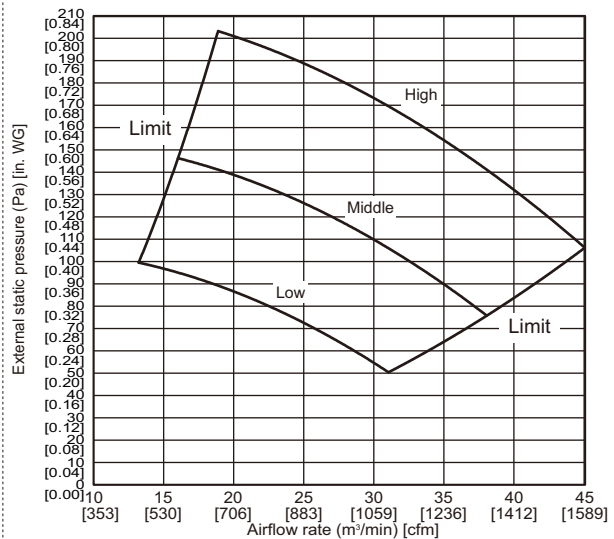
PEFY-WL36NMAU-A

External static pressure : 150Pa [0.60in.WG]
Power source : 208V



PEFY-WL36NMAU-A

External static pressure : 150Pa [0.60in.WG]
Power source : 230V



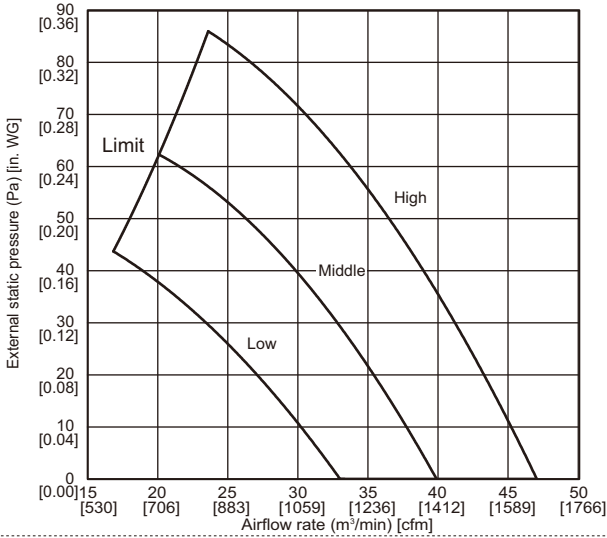
6. FAN CHARACTERISTICS CURVES

Ceiling concealed (Medium static pressure type)

PEFY-WL-NMAU-A

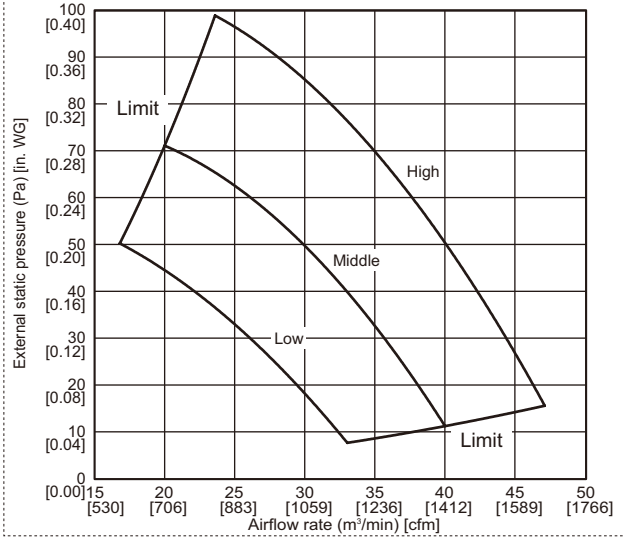
PEFY-WL48NMAU-A

External static pressure : 35Pa [0.14in.WG]
Power source : 208-230V



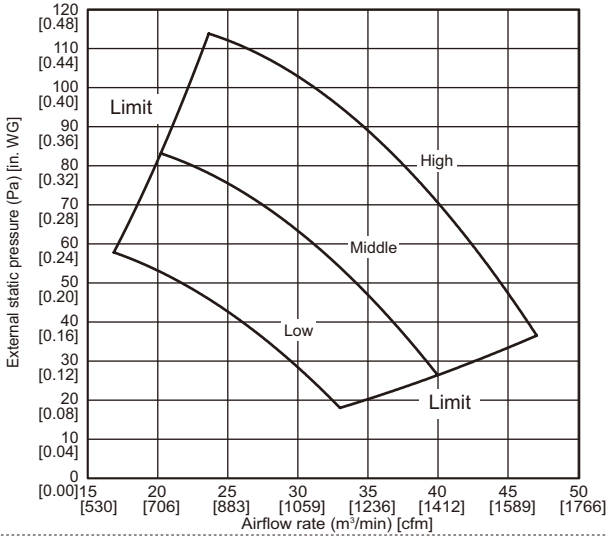
PEFY-WL48NMAU-A

External static pressure : 50Pa [0.20in.WG]
Power source : 208-230V



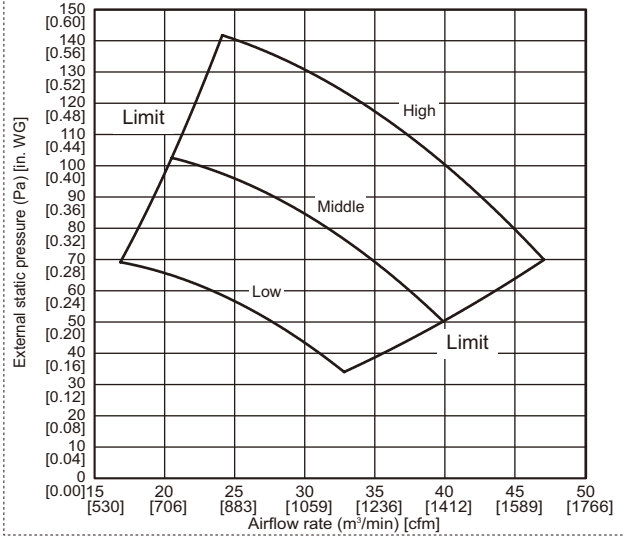
PEFY-WL48NMAU-A

External static pressure : 70Pa [0.28in.WG]
Power source : 208-230V



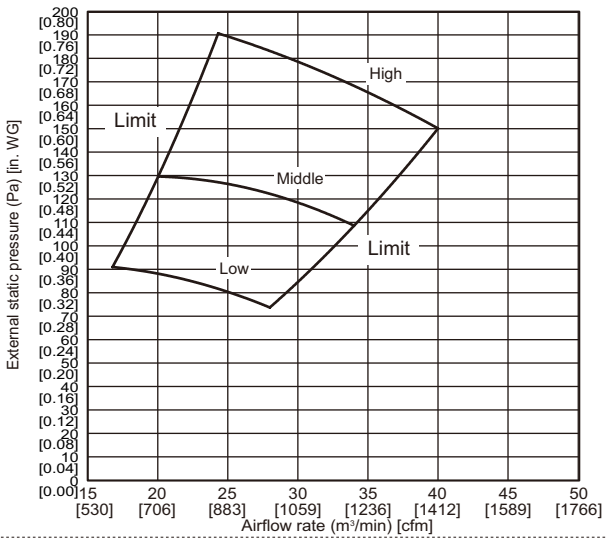
PEFY-WL48NMAU-A

External static pressure : 100Pa [0.40in.WG]
Power source : 208-230V



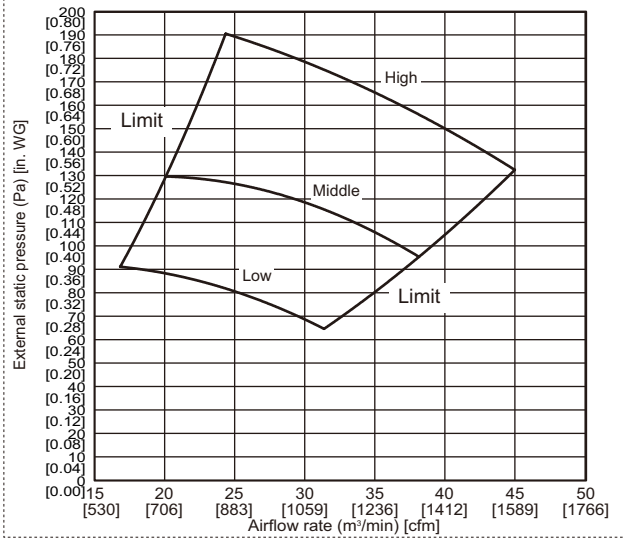
PEFY-WL48NMAU-A

External static pressure : 150Pa [0.60in.WG]
Power source : 208V

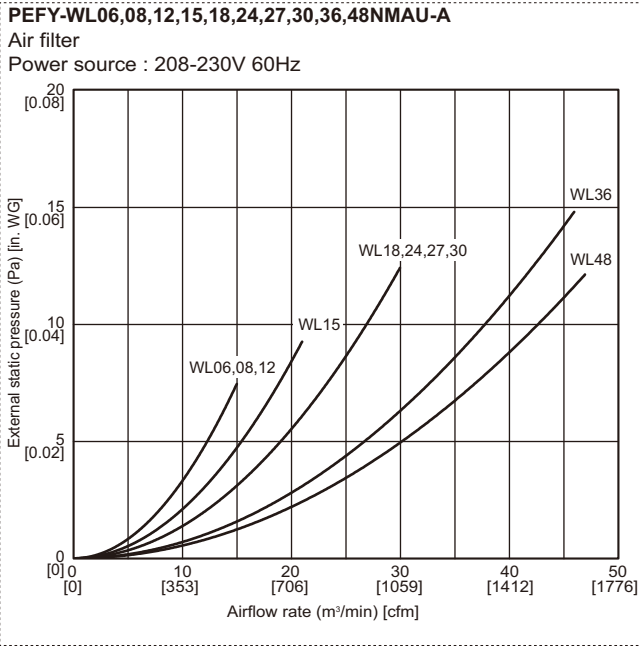


PEFY-WL48NMAU-A

External static pressure : 150Pa [0.60in.WG]
Power source : 230V

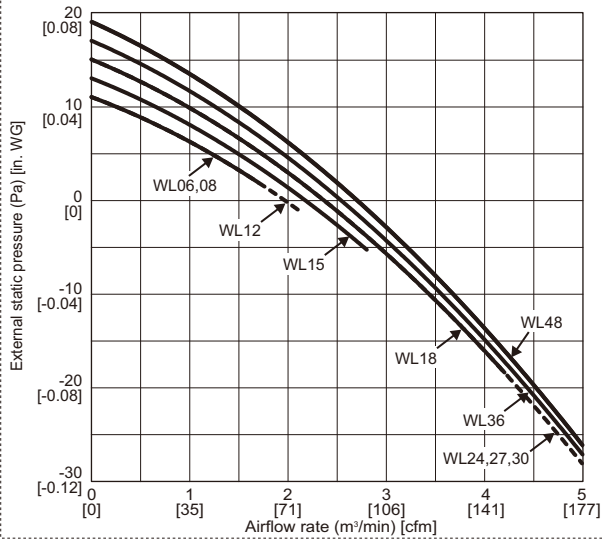


Air filter static pressure cuves



PEFY-WL-NMAU-A

PEFY-WL06,08,12,15,18,24,27,30,36,48NMAU-A



8. ELECTRICAL CHARACTERISTICS

Ceiling concealed (Medium static pressure type)

Symbols: MCA: Minimum Circuit Ampacity (=1.25 × FLA) FLA: Full Load Amps

IFM: Indoor Fan Motor Output: Fan motor rated output

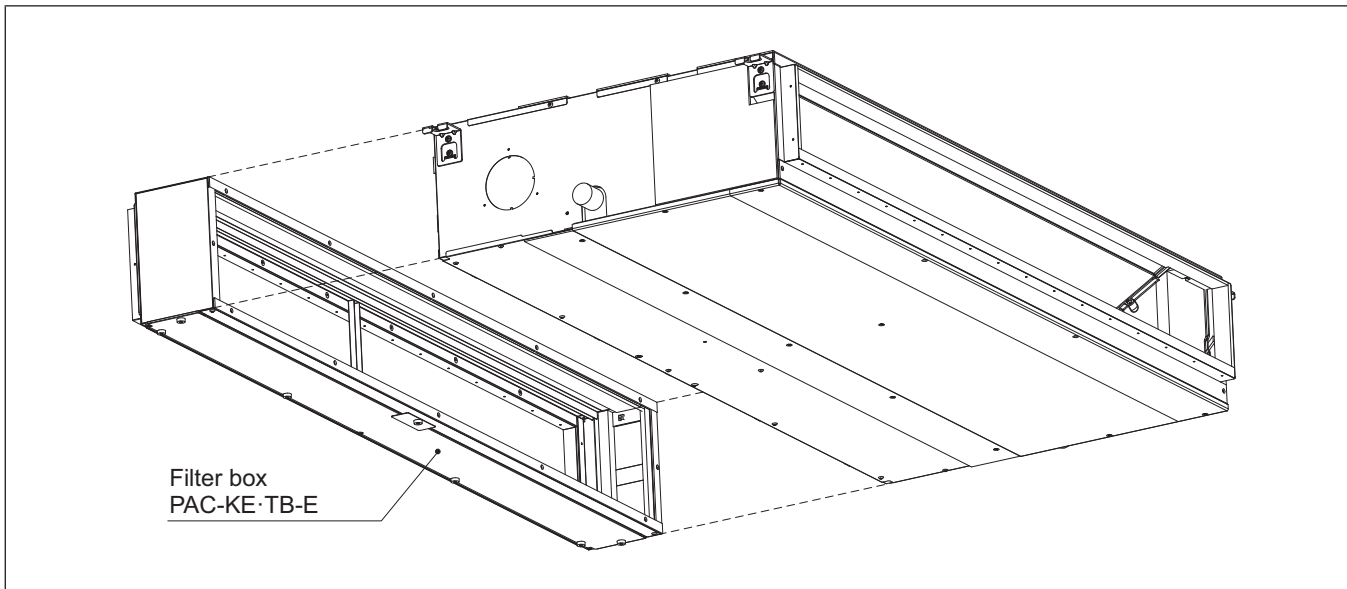
Model	Indoor Unit			IFM		
	Hz	Volts	Voltage range	MCA (A)	Output (kW)	FLA (A)
PEFY-WL06NMAU-A	60Hz	208 / 230V	188 to 253V	1.75	0.085	1.40
PEFY-WL08NMAU-A				1.75	0.085	1.40
PEFY-WL12NMAU-A				2.13	0.085	1.70
PEFY-WL15NMAU-A				2.88	0.121	2.30
PEFY-WL18NMAU-A				2.81	0.121	2.25
PEFY-WL24NMAU-A				2.88	0.121	2.30
PEFY-WL27NMAU-A				2.88	0.121	2.30
PEFY-WL30NMAU-A				2.88	0.121	2.30
PEFY-WL36NMAU-A				4.25	0.300	3.40
PEFY-WL48NMAU-A				4.38	0.300	3.50

PEFY-WL-NMAU-A

9-1. Optional parts line up for the Indoor unit


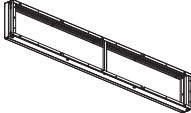
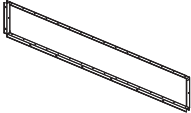

	Filter box	External heater adapter
PEFY-WL06, 08, 12NMAU-A	PAC-KE91TB-E	PAC-YU25HT
PEFY-WL15NMAU-A	PAC-KE92TB-E	PAC-YU25HT
PEFY-WL18, 24, 27, 30NMAU-A	PAC-KE93TB-E	PAC-YU25HT
PEFY-WL36NMAU-A	PAC-KE94TB-E	PAC-YU25HT
PEFY-WL48NMAU-A	PAC-KE95TB-E	PAC-YU25HT

● PEFY-WL-NMAU-A



9-2. Filter box

PAC-KE-TB-E

Item	1 Screw	2 Filter box	3 FLANGE	4 Installation manual	
Quantity	30	1	1	1	
Shape					

Detailed installation information should be referred to its Installation Manual.

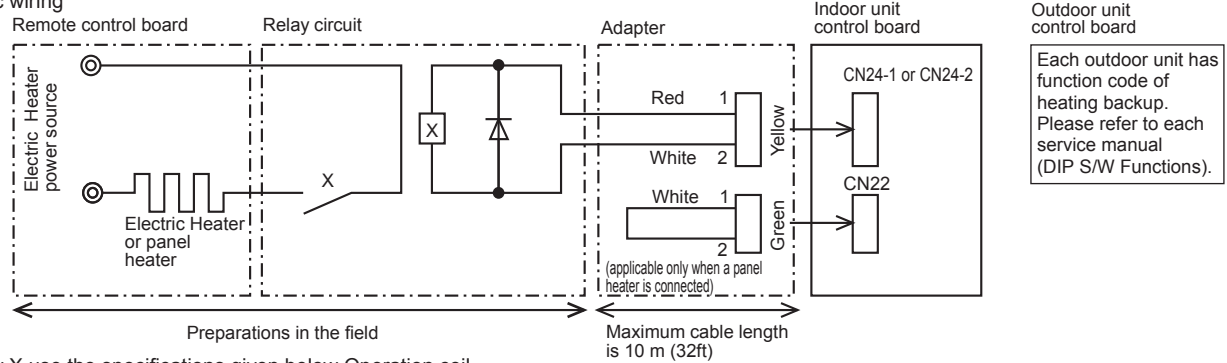
9-3. External heater adapter

PEFY-WL-NMAU-A

External heater adapter PAC-YU25HT is a set of special wiring parts for controlling the electric heater* with the air conditioner system.
 *The electric heater should be designed and prepared at the site.

A basic connection method is shown as follows:(For details, refer to its Installation Manual.)

(1) Basic wiring



For relay X use the specifications given below Operation coil

Rated voltage : 12VDC

Power consumption : 1W or less

* Use the diode that is recommended by the relay manufacturer at both ends of the relay coil.

The length of the electrical wiring for the PAC-YU25HT is 2 meters (6-1/2 ft).

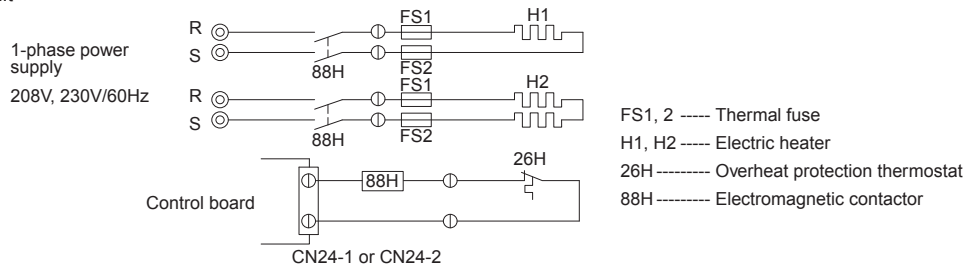
To extend this length, use sheathed 2-core cable.

Control cable type : CVV, CVS, CPEV or equivalent.

Cable size : 0.5 mm² ~ 1.25 mm² (16 to 22 AWG)

Don't extend the cable more than 10 meters (32ft).

(2) Recommended circuit



Item	① External output cable	② Connector (for use with the panel heater)	
Quantity	2	3	
Shape			

Wiring details and Installation details should be referred to its Installation Manual.

⚠ Warning

- Do not use refrigerant other than the type indicated in the manuals provided with the unit and on the nameplate.
 - Doing so may cause the unit or pipes to burst, or result in explosion or fire during use, repair, or at the time of disposal of the unit.
 - It may also be in violation of applicable laws.
 - MITSUBISHI ELECTRIC CORPORATION cannot be held responsible for malfunctions or accidents resulting from the use of the wrong type of refrigerant.
- Our air conditioning equipment and heat pumps contain a fluorinated greenhouse gas, R410A.

MITSUBISHI ELECTRIC CORPORATION

www.MitsubishiElectric.com