

AIR CONDITIONING SYSTEMS

# CITY MULTI

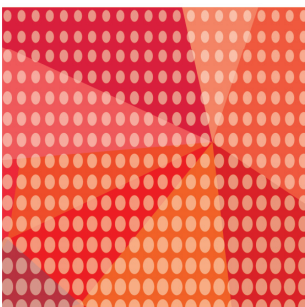


## DATA BOOK

MODEL

**PFFY-P-NEMU-E**

**PFFY-P-NRMU-E**



**PFFY-P-NEMU-E, PFFY-P-NRMU-E**

1. SPECIFICATIONS .....	2
2. EXTERNAL DIMENSIONS .....	6
3. CENTER OF GRAVITY .....	8
4. ELECTRICAL WIRING DIAGRAMS .....	9
5. SOUND LEVELS .....	10
5-1. Sound levels .....	10
5-2. NC curves .....	10
6. TEMPERATURE/AIRFLOW DISTRIBUTIONS .....	11
6-1. Temperature distributions .....	11
6-2. Airflow distributions .....	11
7. ELECTRICAL CHARACTERISTICS .....	12
8. OPTIONAL PARTS .....	13
8-1. Optional parts line up for the Indoor unit .....	13
8-2. External heater adapter .....	13

# 1. SPECIFICATIONS

Floor standing (Exposed type/Concealed type)

PFFY-P-NEMU-E, NRMU-E

Model			PFFY-P06NEMU-E	PFFY-P08NEMU-E	PFFY-P12NEMU-E	PFFY-P15NEMU-E	
Power source			1-phase 208/230 V 60Hz				
Cooling capacity (Nominal)	*1	BTU / h	6,000	8,000	12,000	15,000	
	*1	kW	1.8	2.3	3.5	4.4	
		Power input	kW	0.051/0.061	0.051/0.061	0.055/0.067	0.065/0.078
		Current input	A	0.25/0.27	0.25/0.27	0.27/0.30	0.32/0.35
Heating capacity (Nominal)	*2	BTU / h	6,700	9,000	13,500	17,000	
	*2	kW	2.0	2.6	4.0	5.0	
		Power input	kW	0.051/0.061	0.051/0.061	0.055/0.067	0.065/0.078
		Current input	A	0.25/0.27	0.25/0.27	0.27/0.30	0.32/0.35
External finish			Acrylic painted, MUNSSELL(5Y 8/1)				
External dimension H x W x D		in.	24-13/16 x 41-11/32 x 8-11/16	24-13/16 x 41-11/32 x 8-11/16	24-13/16 x 46-3/32 x 8-11/16	24-13/16 x 46-3/32 x 8-11/16	
		mm	630 x 1,050 x 220	630 x 1,050 x 220	630 x 1,170 x 220	630 x 1,170 x 220	
Net weight		lbs (kg)	67 (30)	67 (30)	71 (32)	73 (33)	
Heat exchanger			Cross fin(Aluminium fin and copper tube)				
FAN	Type x Quantity		Sirocco fan x 1	Sirocco fan x 1	Sirocco fan x 2	Sirocco fan x 2	
	External static press	in.WG	-	-	-	-	
		Pa	-	-	-	-	
	Motor type		1-phase induction motor				
	Motor output	kW	0.015	0.015	0.018	0.030	
	Driving mechanism		Direct-driven				
	Airflow rate (Low-High)	cfm	194-229	194-229	247-317	300-388	
		m3 / min	5.5-6.5	5.5-6.5	7.0-9.0	8.5-11.0	
L / s		92-108	92-108	117-150	142-183		
Sound pressure level (Low-High) (measured in anechoic room)	dB <A>	36-41 (208V)	36-41 (208V)	37-41 (208V)	38-43 (208V)		
	dB <A>	36-41 (230V)	36-41 (230V)	37-41 (230V)	38-43 (230V)		
	dB <A>	-	-	-	-		
Insulation material			Polyethylene foam,Urethane foam				
Air filter			Standard filter				
Protection device			Fuse				
Refrigerant control device			LEV				
Connectable outdoor unit			R410A CITY MULTI	R410A CITY MULTI	R410A CITY MULTI	R410A CITY MULTI	
Diameter of refrigerant pipe (O.D.)	Liquid (R410A)	in. (mm)	1/4 (6.35) Flare	1/4 (6.35) Flare	1/4 (6.35) Flare	1/4 (6.35) Flare	
	Gas (R410A)	in. (mm)	1/2 (12.7) Flare	1/2 (12.7) Flare	1/2 (12.7) Flare	1/2 (12.7) Flare	
Field drain pipe size		in. (mm)	I.D. 1 (26) < Accessory hose O.D. 1-3/32 (27) (top end = 13/16 (20)) >				
Drawing	External		W660125				
	Wiring		W660133				
	Refrigerant cycle		-				
Standard attachment	Document		Installation Manual, Installation Book				
	Accessory						
Optional parts		External heater adapter	PAC-YU25HT	PAC-YU25HT	PAC-YU25HT	PAC-YU25HT	
Remarks			* Details on foundation work, duct work, insulation work, electrical wiring, power source switch, and other items shall be referred to the Installation Manual. * Due to continuing improvement, above specification may be subject to change without notice.				

Notes :	*1 Nominal cooling conditions	*2 Nominal heating conditions	Unit converter
Indoor :	80degF D.B. / 67degF W.B. (26.7degC D.B. / 19.4degC W.B.)	70degF D.B. (21.1degC D.B.)	BTU/h = kW x 3.412
Outdoor :	95degF D.B. (35degC D.B.)	47degF D.B. / 43degF W.B. (8.3degC D.B. / 6.1degC W.B.)	cfm = m3/min x 35.31
Pipe length :	25 ft. (7.6 m)	25 ft. (7.6 m)	lbs = kg / 0.4536
Level difference :	0 ft. (0 m)	0 ft. (0 m)	*Above specification data is subject to rounding variation.

Ref.: Spec\_PFFY-P06-15NEMU-E

# 1. SPECIFICATIONS

Floor standing (Exposed type/Concealed type)

Model		PFFY-P18NEMU-E	PFFY-P24NEMU-E		
Power source		1-phase 208/230 V 60Hz			
Cooling capacity (Nominal)	*1	BTU / h	18,000	24,000	
	*1	kW	5.3	7.0	
	Power input	kW	0.078/0.093	0.096/0.114	
		Current input	A	0.38/0.42	0.47/0.51
Heating capacity (Nominal)	*2	BTU / h	20,000	27,000	
	*2	kW	5.9	7.9	
	Power input	kW	0.078/0.093	0.096/1.114	
		Current input	A	0.38/0.42	0.47/0.51
External finish		Acrylic painted,MUNSELL(5Y 8/1)			
External dimension H x W x D		in.	24-13/16 x 55-17/32 x 8-11/16	24-13/16 x 55-17/32 x 8-11/16	
		mm	630 x 1,410 x 220	630 x 1,410 x 220	
Net weight		lbs (kg)	84 (38)	89 (40)	
Heat exchanger		Cross fin(Aluminium fin and copper tube)			
FAN	Type x Quantity		Sirocco fan x 2	Sirocco fan x 2	
	External static press	in.WG	-	-	
		Pa	-	-	
	Motor type		1-phase induction motor		
	Motor output	kW	0.035	0.063	
	Driving mechanism		Direct-driven		
	Airflow rate (Low-High)	cfm	353-459	353-494	
m <sup>3</sup> / min		10.0-13.0	10.0-14.0		
L / s		167-217	167-233		
Sound pressure level (Low-High) (measured in anechoic room)	dB <A>	38-43 (208V)	40-46 (208V)		
	dB <A>	38-43 (230V)	40-46 (230V)		
	dB <A>	-	-		
Insulation material		Polyethylene foam,Urethane foam			
Air filter		Standard filter			
Protection device		Fuse			
Refrigerant control device		LEV			
Connectable outdoor unit		R410A CITY MULTI			
Diameter of refrigerant pipe (O.D.)	Liquid (R410A)	in. (mm)	1/4 (6.35) Flare	3/8 (9.52) Flare	
	Gas (R410A)	in. (mm)	1/2 (12.7) Flare	5/8 (15.88) Flare	
Field drain pipe size		in. (mm)	I.D. 1 (26) < Accessory hose O.D. 1-3/32 (27) (top end = 13/16 (20)) >		
Drawing	External		W660125		
	Wiring		W660133		
	Refrigerant cycle		-		
Standard attachment	Document		Installation Manual,Installation Book		
	Accessory				
Optional parts	External heater adapter		PAC-YU25HT	PAC-YU25HT	
Remarks		<p>* Details on foundation work, duct work, insulation work, electrical wiring, power source switch, and other items shall be referred to the Installation Manual.</p> <p>* Due to continuing improvement, above specification may be subject to change without notice.</p>			

Notes :	*1 Nominal cooling conditions	*2 Nominal heating conditions	Unit converter
Indoor :	80degF D.B. / 67degF W.B. (26.7degC D.B. / 19.4degC W.B.)	70degF D.B. (21.1degC D.B.)	BTU/h = kW x 3,412
Outdoor :	95degF D.B. (35degC D.B.)	47degF D.B. / 43degF W.B. (8.3degC D.B. / 6.1degC W.B.)	cfm = m <sup>3</sup> /min x 35.31
Pipe length :	25 ft. (7.6 m)	25 ft. (7.6 m)	lbs = kg / 0.4536
Level difference :	0 ft. (0 m)	0 ft. (0 m)	*Above specification data is subject to rounding variation.

Ref.: Spec\_PFFY-P18-24NEMU-E

# 1. SPECIFICATIONS

Floor standing (Exposed type/Concealed type)

PFFY-P-NEMU-E, NRMU-E

Model			PFFY-P06NRMU-E	PFFY-P08NRMU-E	PFFY-P12NRMU-E	PFFY-P15NRMU-E
Power source			1-phase 208/230 V 60Hz			
Cooling capacity (Nominal)	*1	BTU / h	6,000	8,000	12,000	15,000
	*1	kW	1.8	2.3	3.5	4.4
		Power input	kW	0.051/0.061	0.051/0.061	0.055/0.067
		Current input	A	0.25/0.27	0.27/0.30	0.32/0.35
Heating capacity (Nominal)	*2	BTU / h	6,700	9,000	13,500	17,000
	*2	kW	2.0	2.6	4.0	5.0
		Power input	kW	0.051/0.061	0.051/0.061	0.055/0.067
		Current input	A	0.25/0.27	0.27/0.30	0.32/0.35
External finish			Galvanized			
External dimension H x W x D		in.	25-3/16 x 34-29/32 x 8-11/16	25-3/16 x 34-29/32 x 8-11/16	25-3/16 x 39-5/8 x 8-11/16	25-3/16 x 39-5/8 x 8-11/16
		mm	639 x 886 x 220	639 x 886 x 220	639 x 1,006 x 220	639 x 1,006 x 220
Net weight		lbs (kg)	51 (23)	51 (23)	58 (26)	60 (27)
Heat exchanger			Cross fin(Aluminium fin and copper tube)			
FAN	Type x Quantity		Sirocco fan x 1	Sirocco fan x 1	Sirocco fan x 2	Sirocco fan x 2
	External static press	in.WG	-	-	-	-
		Pa	-	-	-	-
	Motor type		1-phase induction motor			
	Motor output	kW	0.015	0.015	0.018	0.030
	Driving mechanism		Direct-driven			
	Airflow rate (Low-High)	cfm	194-229	194-229	247-317	300-388
		m3 / min	5.5-6.5	5.5-6.5	7.0-9.0	8.5-11.0
		L / s	92-108	92-108	117-150	142-183
	Sound pressure level (Low-High) (measured in anechoic room)	dB <A>	36-41 (208V)	36-41 (208V)	37-41 (208V)	38-43 (208V)
dB <A>		36-41 (230V)	36-41 (230V)	37-41 (230V)	38-43 (230V)	
dB <A>		-	-	-	-	
Insulation material			Polyethylene foam,Urethane foam			
Air filter			Standard filter			
Protection device			Fuse			
Refrigerant control device			LEV			
Connectable outdoor unit			R410A CITY MULTI	R410A CITY MULTI	R410A CITY MULTI	R410A CITY MULTI
Diameter of refrigerant pipe (O.D.)	Liquid (R410A)	in. (mm)	1/4 (6.35) Flare	1/4 (6.35) Flare	1/4 (6.35) Flare	1/4 (6.35) Flare
	Gas (R410A)	in. (mm)	1/2 (12.7) Flare	1/2 (12.7) Flare	1/2 (12.7) Flare	1/2 (12.7) Flare
Field drain pipe size		in. (mm)	I.D. 1 (26) < Accessory hose O.D. 1-3/32 (27) (top end = 13/16 (20)) >			
Drawing	External		W660126			
	Wiring		W660133			
	Refrigerant cycle		-			
Standard attachment	Document		Installation Manual,Installation Book			
	Accessory					
Optional parts	External heater adapter		PAC-YU25HT	PAC-YU25HT	PAC-YU25HT	PAC-YU25HT
Remarks			* Details on foundation work, duct work, insulation work, electrical wiring, power source switch, and other items shall be referred to the Installation Manual. * Due to continuing improvement, above specification may be subject to change without notice.			

Notes :	*1 Nominal cooling conditions	*2 Nominal heating conditions	Unit converter
Indoor :	80degF D.B. / 67degF W.B. (26.7degC D.B. / 19.4degC W.B.)	70degF D.B. (21.1degC D.B.)	BTU/h = kW x 3,412
Outdoor :	95degF D.B. (35degC D.B.)	47degF D.B. / 43degF W.B. (8.3degC D.B. / 6.1degC W.B.)	cfm = m3/min x 35.31
Pipe length :	25 ft. (7.6 m)	25 ft. (7.6 m)	lbs = kg / 0.4536
Level difference :	0 ft. (0 m)	0 ft. (0 m)	*Above specification data is subject to rounding variation.

Ref.: Spec\_PFFY-P06-15NRMU-E

# 1. SPECIFICATIONS

Floor standing (Exposed type/Concealed type)

Model		PFFY-P18NRMU-E	PFFY-P24NRMU-E		
Power source		1-phase 208/230 V 60Hz			
Cooling capacity (Nominal)	*1 BTU / h	18,000	24,000		
	*1 kW	5.3	7.0		
	Power input kW	0.078/0.093	0.096/0.114		
	Current input A	0.38/0.42	0.47/0.51		
Heating capacity (Nominal)	*2 BTU / h	20,000	27,000		
	*2 kW	5.9	7.9		
	Power input kW	0.078/0.093	0.096/0.114		
	Current input A	0.38/0.42	0.47/0.51		
External finish		Galvanized			
External dimension H x W x D	in.	25-3/16 x 49-1/16 x 8-11/16	25-3/16 x 49-1/16 x 8-11/16		
	mm	639 x 1,246 x 220	639 x 1,246 x 220		
Net weight	lbs (kg)	69 (31)	71 (32)		
Heat exchanger		Cross fin(Aluminium fin and copper tube)			
FAN	Type x Quantity		Sirocco fan x 2	Sirocco fan x 2	
	External static press	in.WG	-	-	
		Pa	-	-	
	Motor type		1-phase induction motor		
	Motor output	kW	0.035	0.063	
	Driving mechanism		Direct-driven		
	Airflow rate (Low-High)	cfm	353-459	353-494	
m <sup>3</sup> / min		10.0-13.0	10.0-14.0		
L / s		167-217	167-233		
Sound pressure level (Low-High) (measured in anechoic room)	dB <A>	38-43 (208V)	40-46 (208V)		
	dB <A>	38-43 (230V)	40-46 (230V)		
	dB <A>	-	-		
Insulation material		Polyethylene foam,Urethane foam			
Air filter		Standard filter			
Protection device		Fuse			
Refrigerant control device		LEV			
Connectable outdoor unit		R410A CITY MULTI			
Diameter of refrigerant pipe (O.D.)	Liquid (R410A)	in. (mm)	1/4 (6.35) Flare	3/8 (9.52) Flare	
	Gas (R410A)	in. (mm)	1/2 (12.7) Flare	5/8 (15.88) Flare	
Field drain pipe size	in. (mm)	I.D. 1 (26) < Accessory hose O.D. 1-3/32 (27) (top end = 13/16 (20)) >			
Drawing	External		W660126		
	Wiring		W660133		
	Refrigerant cycle		-		
Standard attachment	Document		Installation Manual,Installation Book		
	Accessory				
Optional parts	External heater adapter	PAC-YU25HT	PAC-YU25HT		
Remarks		* Details on foundation work, duct work, insulation work, electrical wiring, power source switch, and other items shall be referred to the Installation Manual. * Due to continuing improvement, above specification may be subject to change without notice.			

Notes :	*1 Nominal cooling conditions	*2 Nominal heating conditions	Unit converter
Indoor :	80degF D.B. / 67degF W.B. (26.7degC D.B. / 19.4degC W.B.)	70degF D.B. (21.1degC D.B.)	BTU/h = kW x 3.412
Outdoor :	95degF D.B. (35degC D.B.)	47degF D.B. / 43degF W.B. (8.3degC D.B. / 6.1degC W.B.)	cfm = m <sup>3</sup> /min x 35.31
Pipe length :	25 ft. (7.6 m)	25 ft. (7.6 m)	lbs = kg / 0.4536
Level difference :	0 ft. (0 m)	0 ft. (0 m)	*Above specification data is subject to rounding variation.

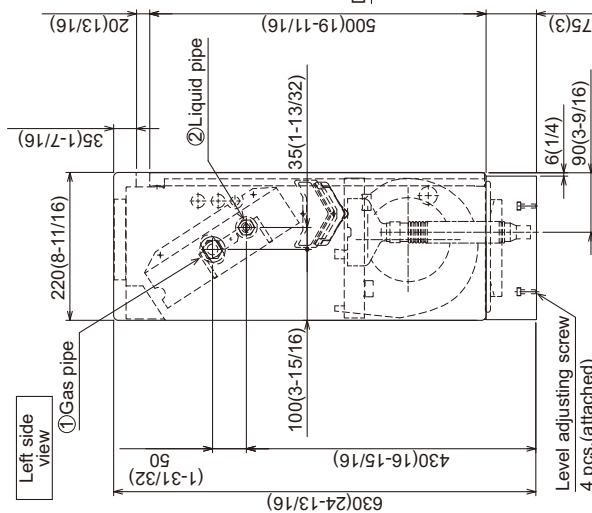
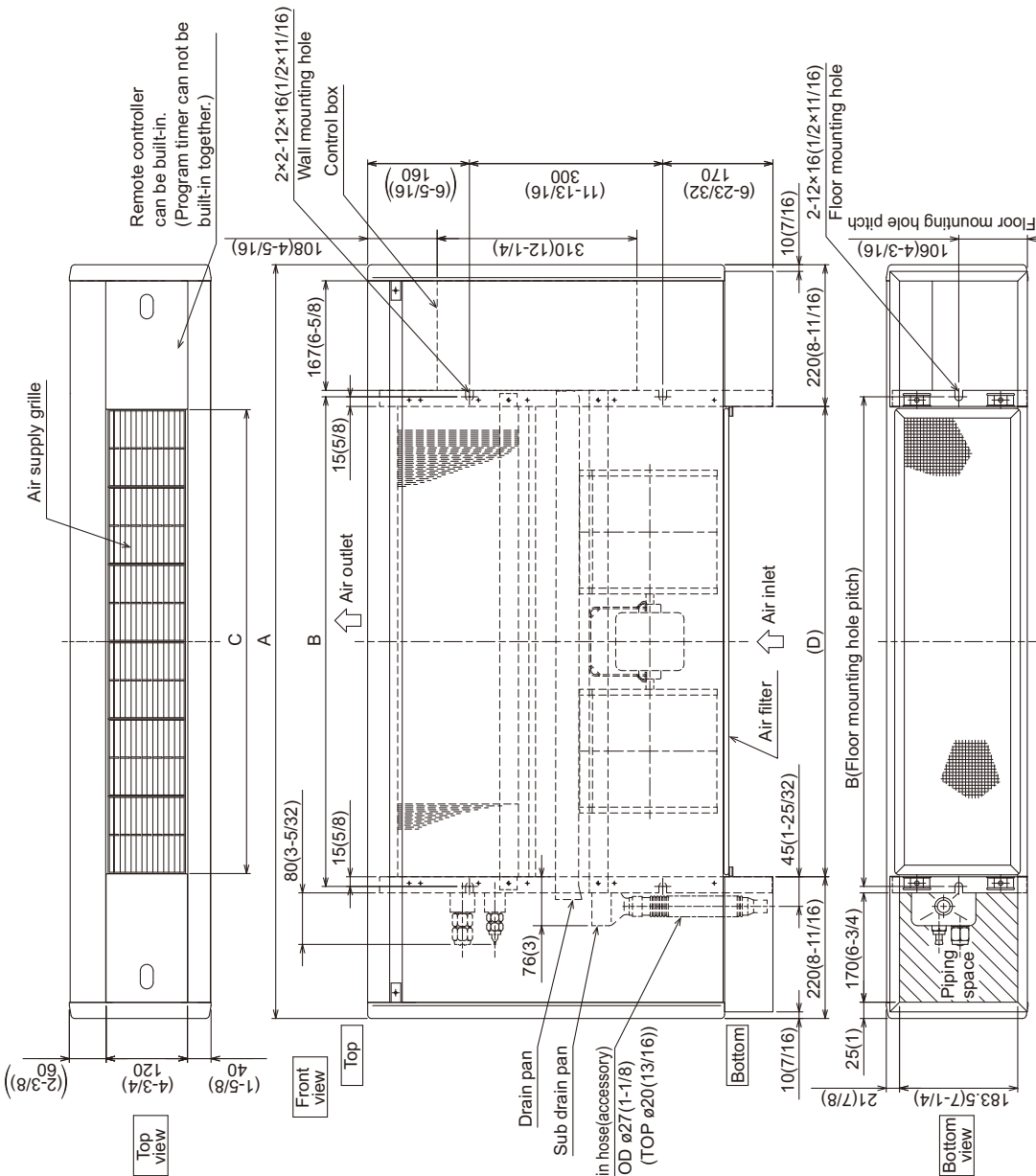
Ref.: Spec\_PFFY-P18-24NRMU-E

## 2. EXTERNAL DIMENSIONS

Floor standing (Exposed type/Concealed type)

PFFY-P06, 08, 12, 15, 18, 24NEMU-E

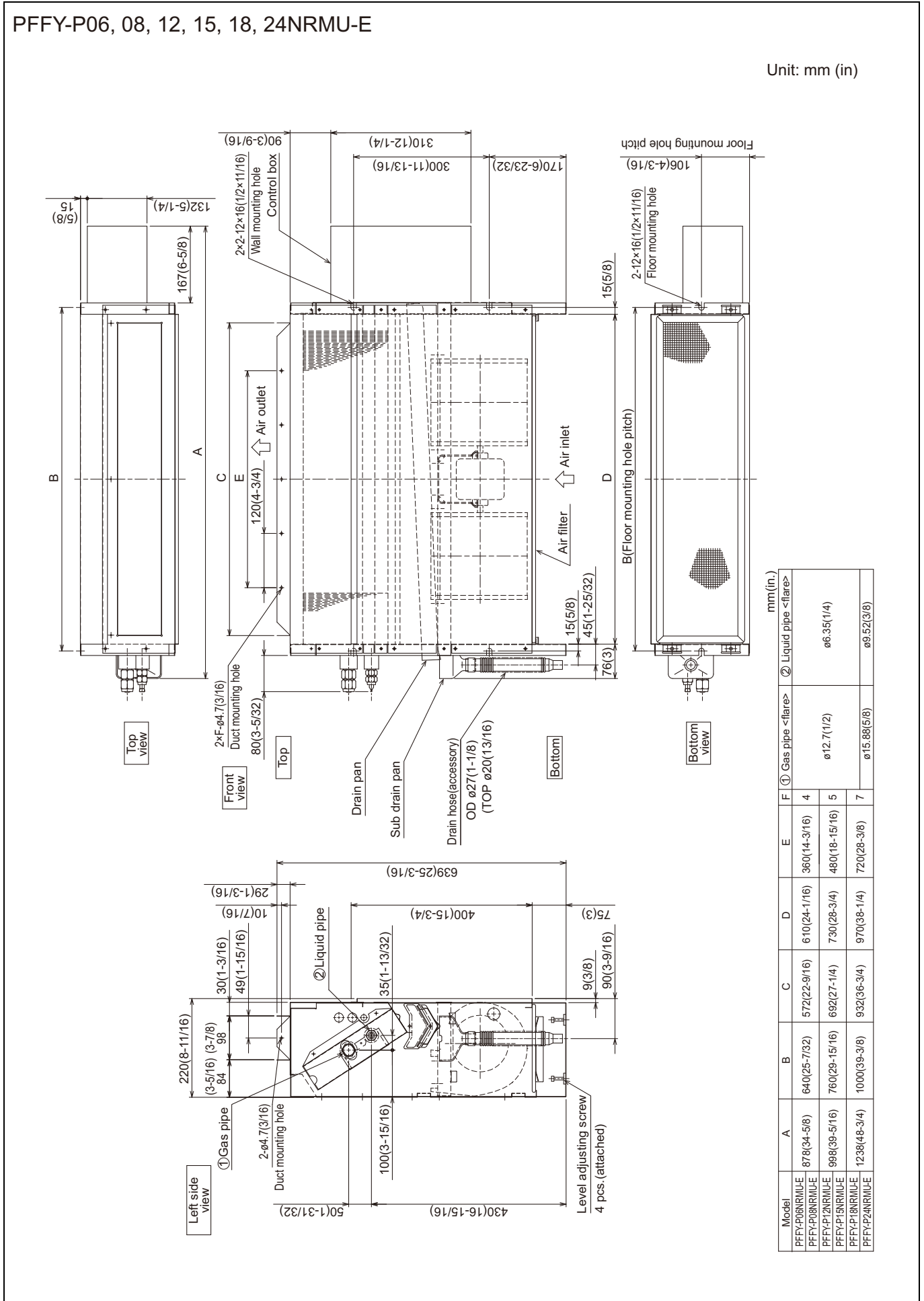
Unit: mm (in)



Model	A	B	C	D	① Gas pipe <flare>	② Liquid pipe <flare>
PFFY-P06NEMU-E	1050(41-11/32)	640(25-7/32)	600(23-5/8)	610(24-1/16)	ø12.7(1/2)	ø6.35(1/4)
PFFY-P08NEMU-E	1170(46-1/16)	760(29-15/16)	720(28-3/8)	730(28-3/4)	ø15.88(5/8)	ø9.52(3/8)
PFFY-P12NEMU-E	1410(55-17/32)	1000(39-3/8)	960(37-13/16)	970(38-1/4)		

## 2. EXTERNAL DIMENSIONS

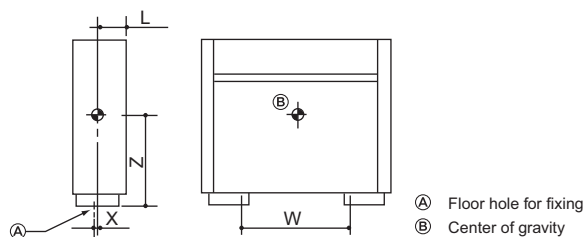
Floor standing (Exposed type/Concealed type)





PFFY-P06,08,12,15,18,24NEMU-E

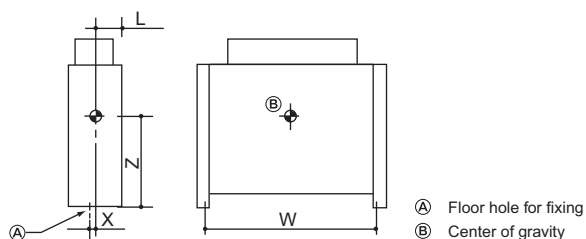
Ref.: PFFY\_NEMU\_COG\_USDB\_ALL



(mm)[in]

Model name	W	L	X	Z
PFFY-P06NEMU-E	640 [25-7/32]	100 [3-15/16]	17 [21/32]	335 [13-3/16]
PFFY-P08NEMU-E	640 [25-7/32]	100 [3-15/16]	17 [21/32]	335 [13-3/16]
PFFY-P12NEMU-E	760 [29-15/16]	100 [3-15/16]	17 [21/32]	335 [13-3/16]
PFFY-P15NEMU-E	760 [29-15/16]	100 [3-15/16]	17 [21/32]	335 [13-3/16]
PFFY-P18NEMU-E	1000 [39-3/8]	100 [3-15/16]	17 [21/32]	335 [13-3/16]
PFFY-P24NEMU-E	1000 [39-3/8]	100 [3-15/16]	17 [21/32]	335 [13-3/16]

PFFY-P06,08,12,15,18,24NRMU-E



(mm)[in]

Model name	W	L	X	Z
PFFY-P06NRMU-E	640 [25-7/32]	100 [3-15/16]	17 [21/32]	335 [13-3/16]
PFFY-P08NRMU-E	640 [25-7/32]	100 [3-15/16]	17 [21/32]	335 [13-3/16]
PFFY-P12NRMU-E	760 [29-15/16]	100 [3-15/16]	17 [21/32]	335 [13-3/16]
PFFY-P15NRMU-E	760 [29-15/16]	100 [3-15/16]	17 [21/32]	335 [13-3/16]
PFFY-P18NRMU-E	1000 [39-3/8]	100 [3-15/16]	17 [21/32]	335 [13-3/16]
PFFY-P24NRMU-E	1000 [39-3/8]	100 [3-15/16]	17 [21/32]	335 [13-3/16]

PFFY-P06, 08, 12, 15, 18, 24NEMU-E  
PFFY-P06, 08, 12, 15, 18, 24NRMU-E

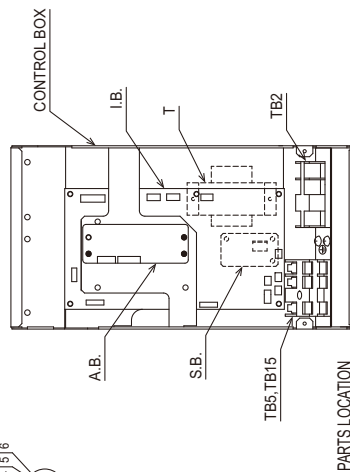
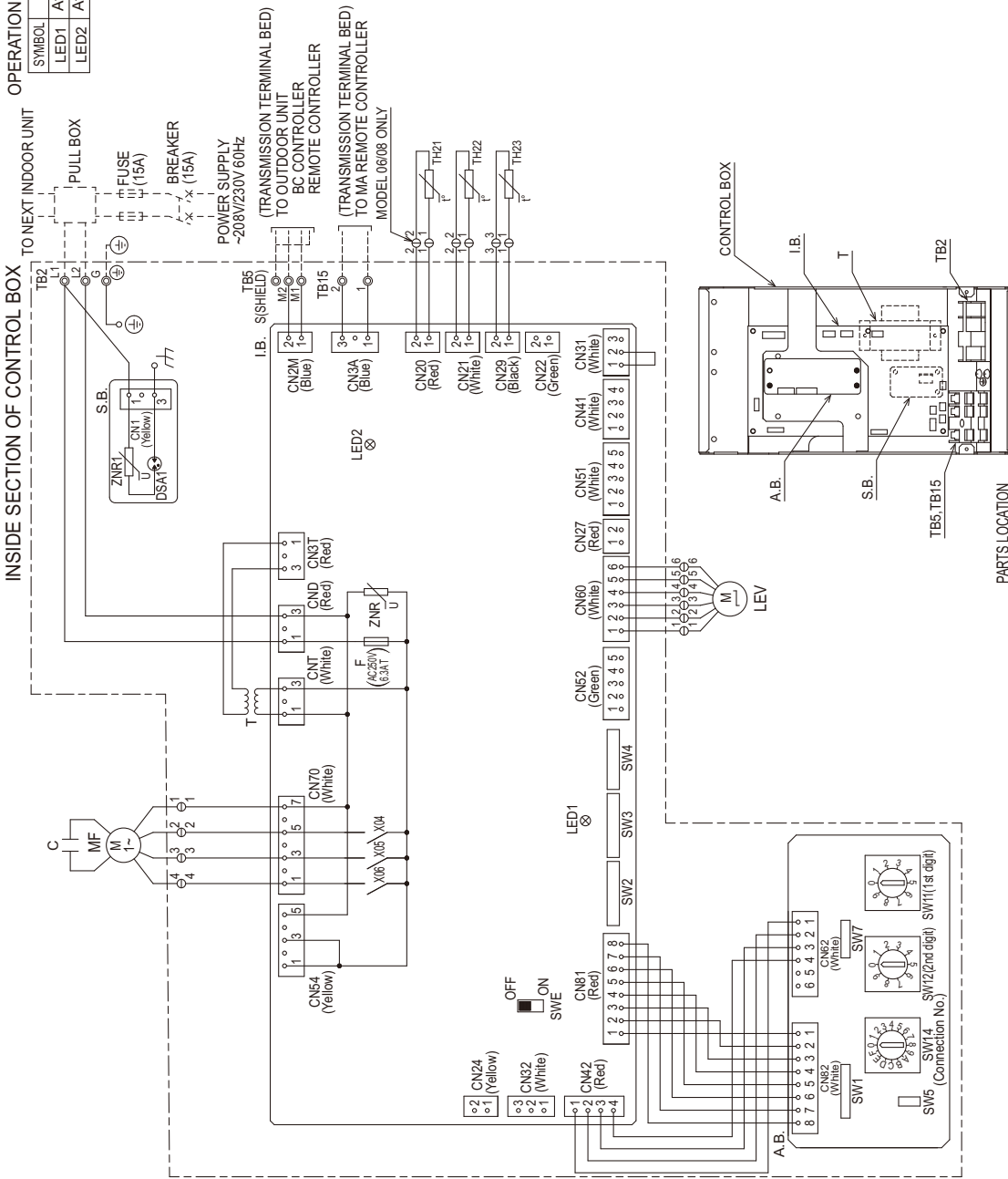
NOTE: 1. The wirings to TB2, TB5, TB15 shown in chained line are field work.  
2. Mark ⊙ indicates terminal bed, ⊞ connector, ⊚ board insertion connector or fastening connector of control board.

OPERATION OF LED FOR INDOOR CIRCUIT BOARD SERVICE

SYMBOL	LED operation under normal state
LED1	At applying main power source → Lighting
LED2	At receiving MA transmission power source → Lighting

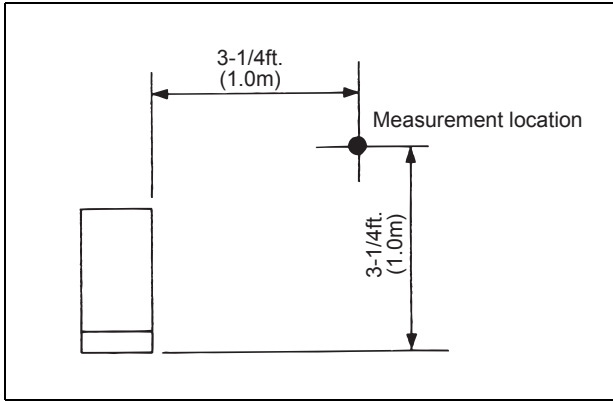
SYMBOL EXPLANATION

MF	Fan motor
I.B.	Indoor controller board
A.B.	Address board
S.B.	Surge absorber board
TB2	Power source terminal bed
TB5	Transmission terminal bed
TB15	Transmission terminal bed
F	Fuse AC250V 6.3A T
ZNR, ZNR1	Varistor
DSA1	Arrester
C	Capacitor
X04-X06	Aux. relay
LEV	Electronic linear expan. valve
TH21	Thermistor (inlet air temp. detection)
TH22	Thermistor (piping temp. detection/liquid)
TH23	Thermistor (piping temp. detection/gas)
SW11(A.B.)	Switch (1st digit address set)
SW12(A.B.)	Switch (2nd digit address set)
SW14(A.B.)	Switch (connection No. set)
SW1(A.B.)	Switch (for mode selection)
SW2(L.B.)	Switch (for capacity code)
SW3(L.B.)	Switch (for mode selection)
SW4(L.B.)	Switch (for model selection)
SW5(A.B.)	Switch (for voltage selection)
SW7(A.B.)	Switch (for model selection)
SWE(L.B.)	Connector (emergency operation)
CN22	Connector
CN24	Connector (Heater)
CN27	Connector (damper)
CN32	Connector (remote switch)
CN41	Connector (HA terminal-A)
CN51	Connector (centrally control)
CN52	Connector (remote indication)



5-1. Sound levels

PFFY-P-NEMU,NRMU-E



\* Measured in anechoic room

Operating sound levels

( Low - High )

Unit : dB (A)

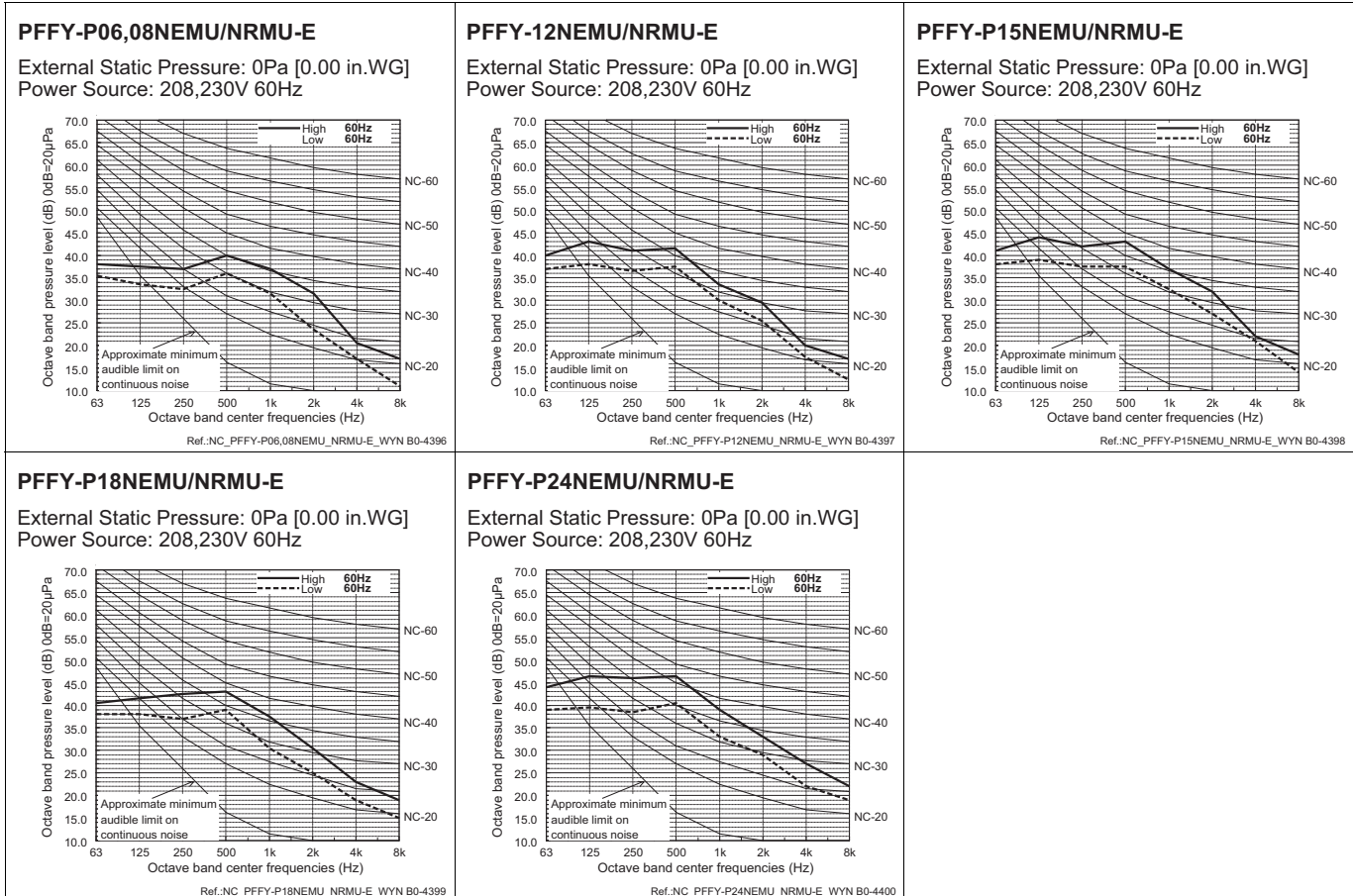
Model	Sound level ( A weighted )	
PFFY-P06,P08NEMU-E	208V	36 - 41
	230V	36 - 41
PFFY-P12NEMU-E	208V	37 - 41
	230V	37 - 41
PFFY-P15,P18NEMU-E	208V	38 - 43
	230V	38 - 43
PFFY-P24NEMU-E	208V	40 - 46
	230V	40 - 46

( Low - High )

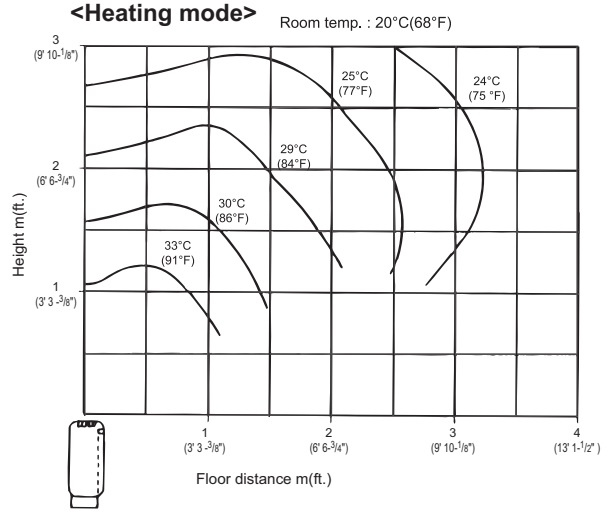
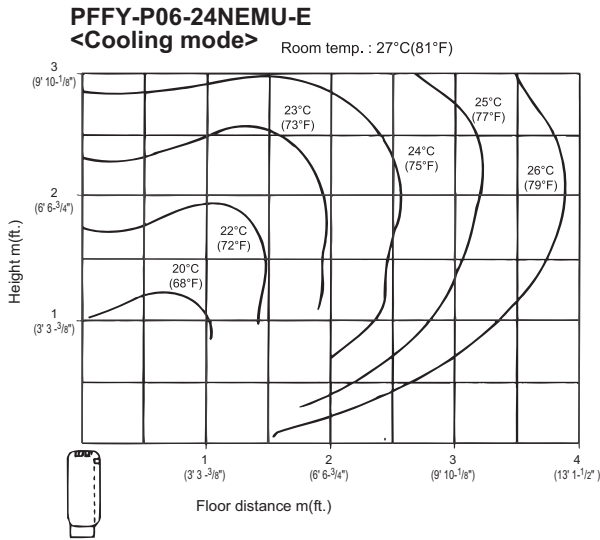
Unit : dB (A)

Model	Sound level ( A weighted )	
PFFY-P06,P08NRMU-E	208V	36 - 41
	230V	36 - 41
PFFY-P12NRMU-E	208V	37 - 41
	230V	37 - 41
PFFY-P15,P18NRMU-E	208V	38 - 43
	230V	38 - 43
PFFY-P24NRMU-E	208V	40 - 46
	230V	40 - 46

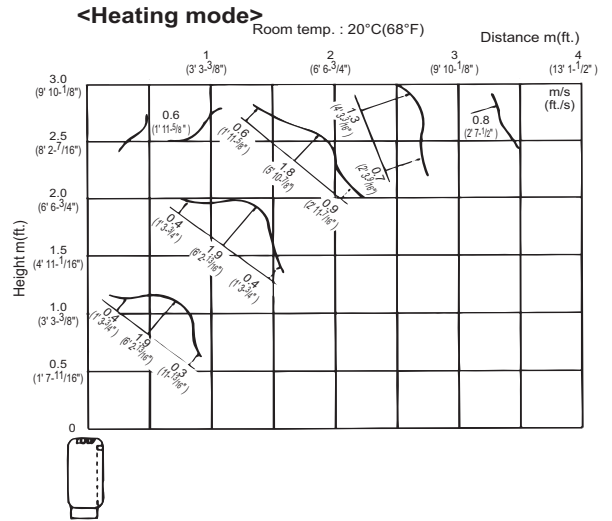
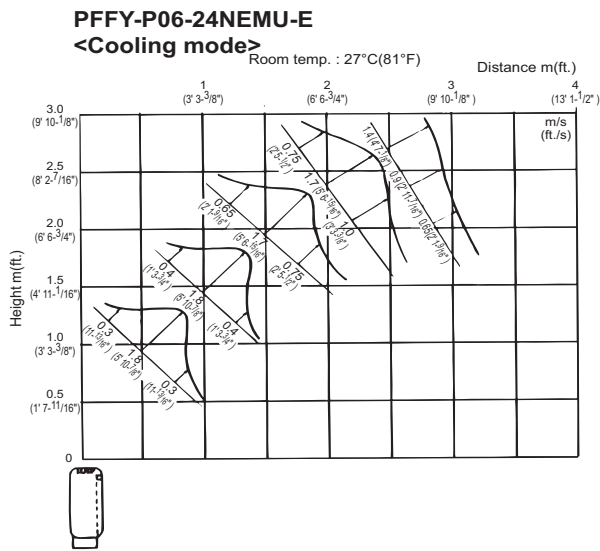
5-2. NC curves



6-1. Temperature distributions



6-2. Airflow distributions



## 7. ELECTRICAL CHARACTERISTICS

Floor standing (Exposed type/Concealed type)

Symbols: MCA: Minimum Circuit Ampacity (=1.25xFLA) FLA: Full Load Amps

IFM: Indoor Fan Motor Output: Fan motor rated output

Model	Indoor Unit			IFM		
	Hz	Volts	Voltage range	MCA(A)	Output(kW)	FLA(A)
PFFY-P06NEMU-E	60Hz	208 / 230V	188 to 253V	0.32 / 0.34	0.015 / 0.015	0.25 / 0.27
PFFY-P08NEMU-E				0.32 / 0.34	0.015 / 0.015	0.25 / 0.27
PFFY-P12NEMU-E				0.34 / 0.38	0.018 / 0.018	0.27 / 0.30
PFFY-P15NEMU-E				0.40 / 0.44	0.030 / 0.030	0.32 / 0.35
PFFY-P18NEMU-E				0.48 / 0.53	0.035 / 0.035	0.38 / 0.42
PFFY-P24NEMU-E				0.59 / 0.64	0.063 / 0.063	0.47 / 0.51
PFFY-P06NRMU-E	60Hz	208 / 230V	188 to 253V	0.32 / 0.34	0.015 / 0.015	0.25 / 0.27
PFFY-P08NRMU-E				0.32 / 0.34	0.015 / 0.015	0.25 / 0.27
PFFY-P12NRMU-E				0.34 / 0.38	0.018 / 0.018	0.27 / 0.30
PFFY-P15NRMU-E				0.40 / 0.44	0.030 / 0.030	0.32 / 0.35
PFFY-P18NRMU-E				0.48 / 0.53	0.035 / 0.035	0.38 / 0.42
PFFY-P24NRMU-E				0.59 / 0.64	0.063 / 0.063	0.47 / 0.51

PFFY-P-NEMU-E, NRMU-E

8-1. Optional parts line up for the Indoor unit

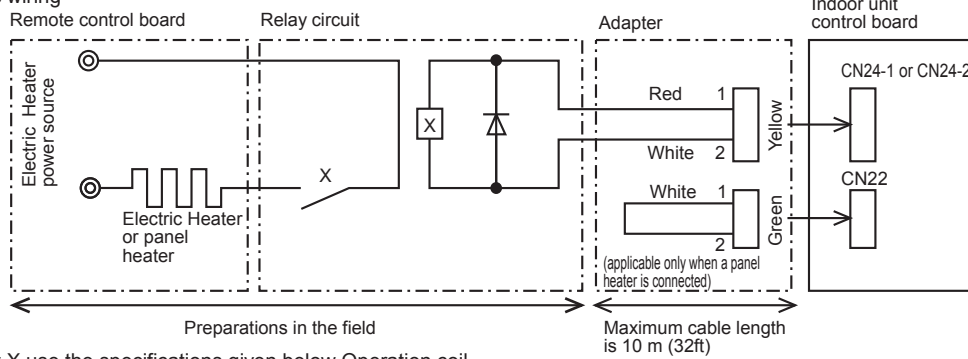
External heater adapter	
PFFY-P06,08,12,15,18,24NEMU-E	PAC-YU25HT
PFFY-P06,08,12,15,18,24NRMU-E	PAC-YU25HT

8-2. External heater adapter

External heater adapter PAC-YU25HT is a set of special wiring parts for controlling the electric heater\* with the air conditioner system.  
 \*The electric heater should be designed and prepared at the site.

A basic connection method is shown as follows:(For details, refer to its Installation Manual.)

(1) Basic wiring



Outdoor unit control board  
 Each outdoor unit has function code of heating backup. Please refer to each service manual (DIP S/W Functions).

For relay X use the specifications given below Operation coil  
 Rated voltage : 12VDC  
 Power consumption : 1W or less

\* Use the diode that is recommended by the relay manufacturer at both ends of the relay coil.

The length of the electrical wiring for the PAC-YU25HT is 2 meters (6-1/2 ft).

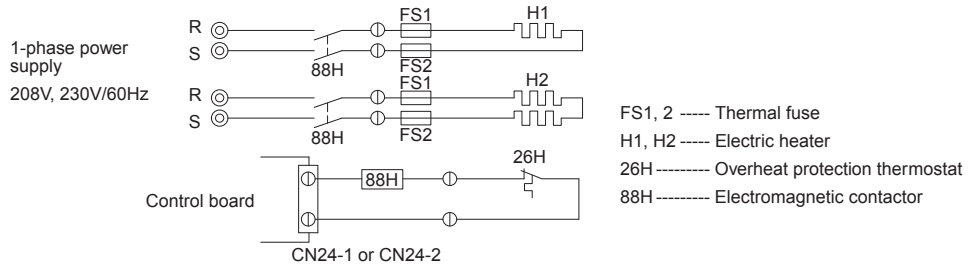
To extend this length, use sheathed 2-core cable.

Control cable type : CVV, CVS, CPEV or equivalent.

Cable size : 0.5 mm<sup>2</sup> ~ 1.25 mm<sup>2</sup> (16 to 22 AWG)

Don't extend the cable more than 10 meters (32ft).

(2) Recommended circuit



FS1, 2 ----- Thermal fuse  
 H1, H2 ----- Electric heater  
 26H ----- Overheat protection thermostat  
 88H ----- Electromagnetic contactor

Item	① External output cable	② Connector (for use with the panel heater)	
Quantity	2	3	
Shape			

Wiring details and Installation details should be referred to its Installation Manual.



**⚠ Warning**

- Do not use refrigerant other than the type indicated in the manuals provided with the unit and on the nameplate.
  - Doing so may cause the unit or pipes to burst, or result in explosion or fire during use, repair, or at the time of disposal of the unit.
  - It may also be in violation of applicable laws.
  - MITSUBISHI ELECTRIC CORPORATION cannot be held responsible for malfunctions or accidents resulting from the use of the wrong type of refrigerant.
- Our air conditioning equipment and heat pumps contain a fluorinated greenhouse gas, R410A.

**MITSUBISHI ELECTRIC CORPORATION**

[www.MitsubishiElectric.com](http://www.MitsubishiElectric.com)