



Mitsubishi Electric Air-conditioner Control System

Centralized Controller

GB-24A *Web Browser Operation Manual*

Contents

1 Introduction	1
1-1 Terms Used in This Manual	1
1-2 Computer Requirements	1
2 Setting the Operating Environment	2
2-1 Setting the PC IP Address	2
2-2 Setting the Web Browser	4
2-3 Setting the Java Execution Environment	6
3 Performing Operations	7
3-1 Entering the User Name and the Password, and Connecting to the GB-24A	7
3-2 Performing Air Conditioner or General Equipment Operations	11
3-3 Checking the Measurement Condition	15
3-4 Checking the List of Malfunctioning Units	18
3-5 Checking the List of Units with a Triggered Filter Sign	19
3-6 Setting Schedules	20
3-7 Checking the Malfunction Log	28
3-8 Setting the Current Date and Time	29
3-9 Checking the Send Mail Log	30
4 Registering a License for Optional Functions	31

Before using the web browser to monitor and operate the GB-24A controller, please read this operation manual carefully to ensure correct operation.
Retain this manual for future reference.

1 Introduction

Special features of Mitsubishi Electric Corporation's "Centralized Controller GB-24A" are that a PC connected to a LAN can be used to monitor the operation condition of air conditioners and perform air conditioner operations.

In this manual, the procedures to monitor the status of and to operate the centralized controller GB-24A on the Web browser are described.

1-1 Terms Used in This Manual

- "Click" refers to positioning the mouse cursor on the object (such as button or folder), pressing down, and releasing the left mouse button once.
- Unless otherwise specified, the example screen images used in this manual are Windows® XP and Internet Explorer 6.0 screen images.

Note: Windows is a registered trademark or trademark of Microsoft Corporation USA in the United States and other countries.

1-2 Computer Requirements

Monitor and operate air conditioners by web browser, computer must include the following requirements.

Table 1-1 Computer Requirements

Item	Requirement
CPU	Pentium 133MHz or faster (300MHz or faster recommended)
Memory	64M Bytes or more (128M Bytes or more recommended)
Screen resolution	1024 x 768 or higher recommended
Compatible browser	Microsoft® Internet Explorer 6.0 or later Note: You must have a Java® execution environment. (Sun Microsystems® Java Plug-in Ver.1.4.2 or later). Note: You can check the Sun Microsystems Java Plug-in version in "Java Plug-in" in a control panel. Note: When using Sun Microsystems® Java Plug-in Ver.1.6.0_10 or later, set the Java execution environment according to the instructions in section 2-3 "Setting the Java Execution Environment."
On-board LAN port or LAN card	One connector (10BASE-T)
Other	Pointing device such as a mouse

Note: Microsoft is a registered trademark or trademark of Microsoft Corporation USA in the United States and other countries.

Sun Microsystems and Java are trademarks or registered trademarks of Sun Microsystems Inc. in the United States and/or other countries.

2 Setting the Operating Environment

PC settings and web browser settings required for using a web browser to monitor air conditioner units and perform operations are explained in the following pages.

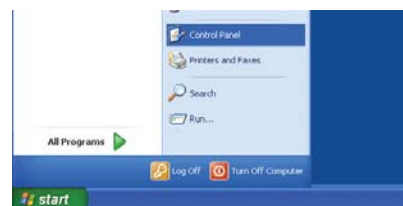
2-1 Setting the PC IP Address

Set an IP address on the PC that enables GB-24A to connect via a web browser. For instance, if the GB-24A IP address is [192.168.1.1], the PC IP address will need to belong to the same system [192.168.1.101].

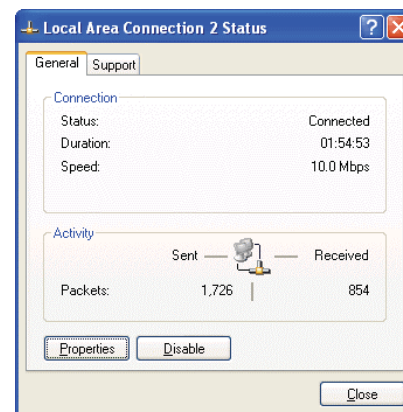
If the GB-24A is connected to an existing LAN, ask the LAN administrator to decide what PC IP address to use.

Note: When using a GB-24A dedicated LAN, it is recommended that the GB-24A main unit be given an IP address within the range [192.168.1.1] — [192.168.1.40] and the PCs connected to the GB-24A be given an IP address within the range [192.168.1.101] — [192.168.1.150]

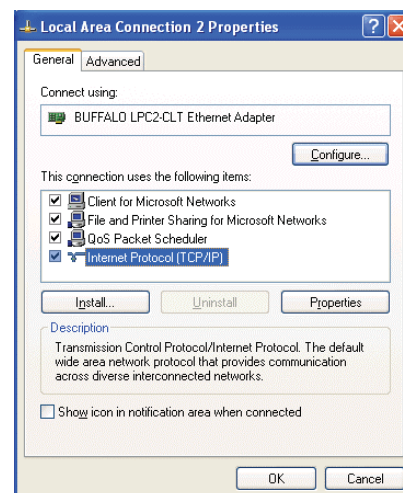
- (1) Click on [Control Panel] under [Start] to open the Control Panel.



- (2) In the Control Panel window, double click [Network and Dial-up Connections] and the Network and Dial-up Connections window will open. Double click on [Local Area Setting] and the [Local Area Connection Status] dialog will open. Click [Properties].



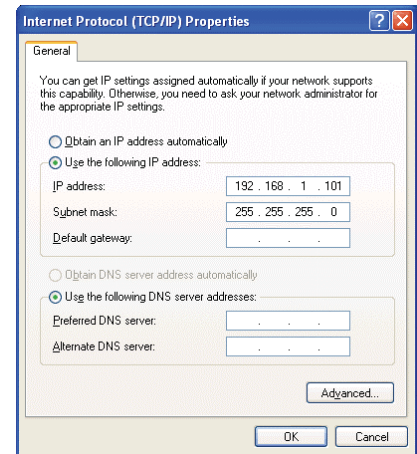
- (3) In the [Local Area Connection Properties] dialog, click [Internet Protocol] to select it and click the [Properties] button.



- (4) In the [Internet Protocol (TCP/IP) Properties] dialog, click [Use the following IP address] and enter the IP address (for example, “192.168.1.101”) that you want to set in the IP address field. You normally set [255.255.255.0] as the subnet mask.

Note: Ask your LAN administrator to provide the IP addresses and subnet mask.

- (5) Click the [OK] button to close this dialog, and then close the other open dialogs to complete the network setting.



2-2 Setting the Web Browser

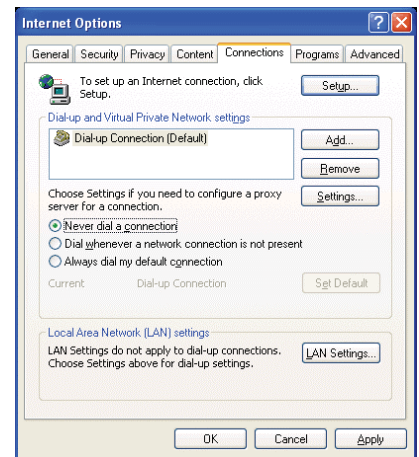
Necessary web browser settings must be performed to enable the web browser to connect to the GB-24A.

Note: The settings and screen images used as examples in this manual are based on Internet Explorer 6.0.

2-2-1 No Internet Connection

Follow the instructions below to make the web browser environment settings when using the PC with no Internet connection for monitoring and operating the air conditioners.

- (1) Click the web browser menu item [Tools] and then click [Internet Options...]
- (2) In the [Internet Options] tabbed dialog, click the [Connections] tab to display.
- (3) Select [Never dial a connection] in the Dial-up settings section and click the [OK] button to close the dialog.

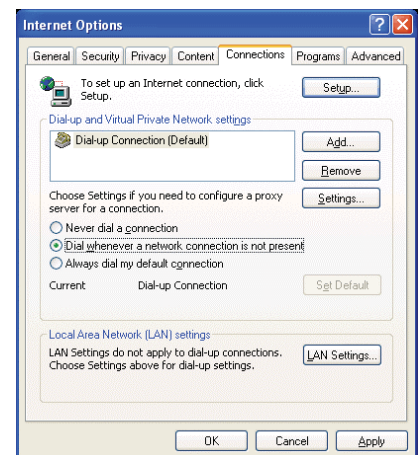


2-2-2 Internet connection using a dial-up

If the PC used for monitoring air conditioners and performing operations is going to connect to the Internet via a dial-up connection, use the procedure given below to set the web browser environment settings.

By performing these settings, a message will appear asking whether or not to use a dial-up connection when an Internet connection is necessary. When connecting to the Internet is designed, follow the directions below.

- (1) Click the web browser menu item [Tools] and then click [Internet Options...]
- (2) In the [Internet Options] tabbed dialog, click the [Connections] tab to display that page.
- (3) Select [Dial whenever a network connection is not present] in the Dial-up settings section and click the [OK] button to close the dialog.



2-2-3 Connecting to the Internet using a proxy server (Using an existing LAN)

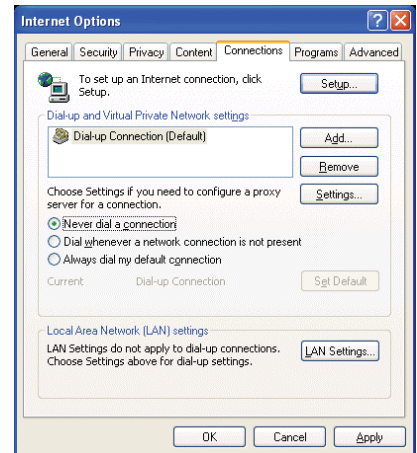
If the PC you use for monitoring air conditioners and performing operations is going to access the Internet via proxy server by connecting to an existing LAN such as a LAN within your company, use the procedure given below to set the web browser environment settings.

By performing these settings, your PC will connect to a proxy server only when connecting to the Internet.

- (1) Click the web browser menu item [Tools] and then click [Internet Options...]



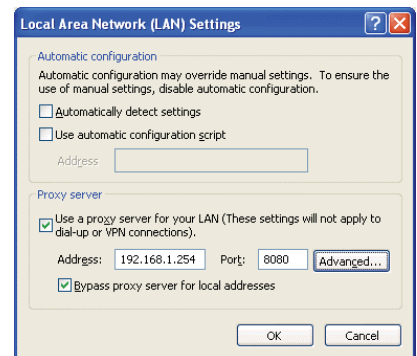
- (2) In the [Internet Options] tabbed dialog, click the [Connections] tab to display that page.



- (3) Select [Never dial a connection] in the Dial-up setting section.

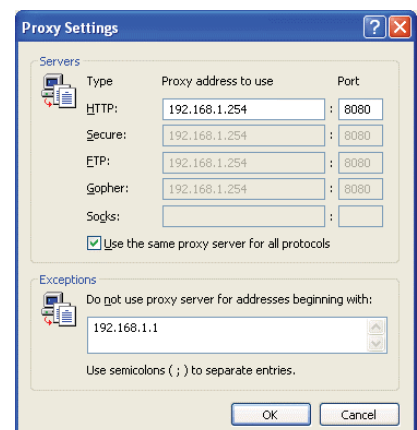
- (4) Click the [LAN Setting . . .] button in the Local Area Network (LAN) settings section to display the Local Area Network (LAN) Settings dialog.

- (5) In the Local Area Network (LAN) Settings dialog, check [Bypass proxy server for local addresses] and click the [Advanced...] button.



- (6) Enter the IP address for the GB-24A (e.g. 192.168.1.1) in the Exceptions field of the Proxy Setting dialog and click the [OK] button to close the dialog and then close the other open dialogs to complete the setting.

Note: If connecting to more than one GB-24A, you can specify multiple IP addresses like [192.168.1.1; 192.168.1.2], however, it is also possible to use the asterisk (*) and specify [192.168.1*].



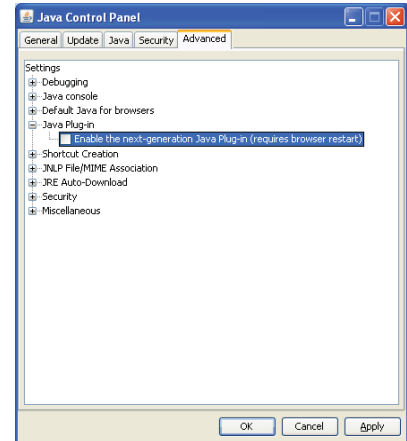
2-3 Setting the Java Execution Environment

When using Java Plug-in version 1.6.0_10 or later, make the following environment settings (not required for version 1.6.0_09 or earlier).

Note: The setting samples and screenshots used in this manual are those of Java Plug-in version 1.6.0_11.

2-3-1 Disabling the next-generation Java Plug-in

- (1) Open Java Control Panel by double-clicking Java in the Control Panel.
- (2) In the [Advanced] tab under the [Java Control Panel] screen, click the plus next to [Java Plug-in] to expand the list, and uncheck the checkbox next to [Enable the next-generation Java Plug-in (requires browser restart)].



3 Performing Operations

Text below explains how to connect to the GB-24A and how to monitor and adjust the operation condition of air conditioners. Follow the directions given here when performing operations.

Note: If the GB-24A is restarted due to a power interruption etc., wait until the screen on the GB-24A main unit displays the normal operation screen (it takes several minutes before the normal operation screen is displayed) before using a web browser to access the GB-24A. If access is attempted while the GB-24A is still starting up, the most recent data might not be displayed or communication errors could occur.

Note: Default IP address of GB-24A is "192.168.1.1". (Factory setting)

3-1 Entering the User Name and the Password, and Connecting to the GB-24A

- (1) Enter the web page address in the address field of the web browser as follows:

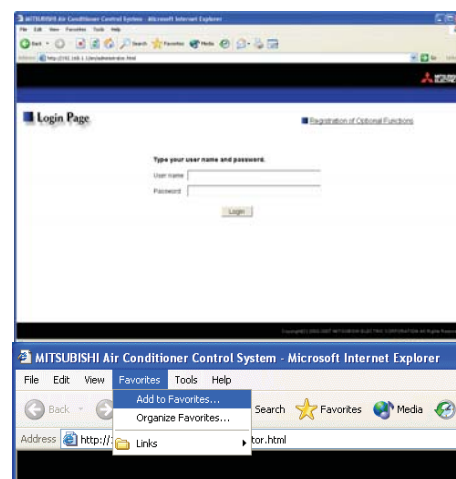
http://[IP address of the GB-24A]/administrator.html

Press the [Enter] key on the keyboard. A screen appears for login.

Note: For example, type "http://192.168.1.1/administrator.html" if the GB-24A IP address is [192.168.1.1].

- (2) To make connection easier for the next time, click the web browser menu item [Favorites], click [Add to Favorites], then add the address to the Favorites folder. Once this address is added to the Favorites folder, it is not necessary to input the address of (1).

Simply select it from the Favorites folder and the GB-24A page will appear.



- (3) Enter the user name and the password in the login screen, and click the [Login] button. The screen for monitoring the operation condition will appear. An explanation on how to perform operations in the normal operation screen begins from the next page.

The table below shows the web page address for public users and managers, their respective default the user names and passwords, and accessible functions. If there are public users who will only operate the air conditioners, provide them with the appropriate web page address and password.

User	Web page address	Default user name	Default password	Accessible functions
Managers	http:// [IP address of the GB-24A]/administrator.html	administrator	admin	Monitor / operation Measurement monitor Schedule settings Malfunction log monitor Date/time adjustment User registration Send mail log monitor Optional function registration

Note: It is recommended to change the user name and password, so users other than the manager are not permitted to change the settings.

Checking the Operation Condition of the Air Conditioner or the General Equipment
 Given below is an explanation on how to monitor the operation condition of a list of all groups, or of groups in block units. When a correct user name and password is entered on the password entry screen, the screen used to monitor the operation condition of air conditioner and general equipment groups will appear.

3-1-1 Checking the operation condition of all groups

Click the menu item [Monitor/Operation], or click [Condition List] in the sub menu to display a list of the operation condition of all the air conditioner and the general equipment groups.

This screen allows the operator to view a list of all the groups to monitor for malfunctions and prevent units being left on by mistake.

Menu
Sub menu
Update to most recent condition
 Click to update the screen so that the most recent operation condition is shown.
Batch operation
 Click when you want to perform an operation on all groups at once.
Block display
 Click to display the operation condition of groups in block.
Group icons
 These icons are used to indicate the operation condition of an air conditioner or a general Equipment groups. The group name is displayed by pointing to the icon with the mouse cursor. Switch to the operation screen by clicking the icon.

Item	Description																
Block display	Switches to the screen where you can check the operation condition according to block units.																
Update to most recent condition	Click [Update] to ensure the displayed items reflect the most recent operation condition. When [Auto] is selected, information is updated automatically every minute to reflect the latest information.																
Batch operation	Click [Batch Operation] when you want to perform an operation on all groups at once.																
Group icon	<p>The operation condition is indicated by the icon that is displayed. When you point to a group icon with the mouse cursor, the group name is displayed. To switch to the operation screen, click on the icon. The icons used to indicate the operation condition are shown below.</p> <p>(1) Air conditioner group operation condition</p> <table><tr><th>ON</th><th>OFF</th><th>Error</th><th>Filter Sign</th></tr><tr><td></td><td></td><td></td><td></td></tr><tr><th>Interlocked ventilator ON</th><th>Interlocked ventilator OFF</th><th>Schedule set</th><th>Setback</th></tr><tr><td></td><td></td><td></td><td></td></tr></table> <p>Note: Other than 4-airflow icons, 2-airflow or ceiling-suspended icons are also available. Select the icon type on Initial Setting Web.</p> <p>Note: Whether to display the filter sign can be set on Initial Setting Web.</p> <p>Note: If a given LOSSNAY unit is interlocked with multiple indoor unit groups, the LOSSNAY unit may be in operation even when the display shows that the unit is stopped.</p> <p>Note: When setting ventilation interlock with Mr. Slim units, the air conditioning and interlocked ventilation icon will display ON even when the interlocked LOSSNAY is operating by itself. (This will occur when used with the following M-NET adapter:PAC-SF48/50/60/70/80/81MA-E)</p>	ON	OFF	Error	Filter Sign					Interlocked ventilator ON	Interlocked ventilator OFF	Schedule set	Setback				
ON	OFF	Error	Filter Sign														
Interlocked ventilator ON	Interlocked ventilator OFF	Schedule set	Setback														

3-1-2 Checking the operation condition of groups in different blocks

Click [Block] in the screen showing the list of all groups to display the operation condition of air conditioner and general equipment groups for each block.

Use this screen if you want to check data not included in the List screen such as operation mode and set temperature or if you want to check operation condition for each block.

Batch operation
Click when you want to perform an operation on all groups at once.

Update to most recent condition
Click to update the screen so that the most recent operation condition is shown.

Select block
Use this to select which block to display.

Group icons
These icons are used to indicate the operation condition of an air conditioner or a general equipment group. Switch to the operation screen by clicking the icon.

Group name
Group names are displayed.

Overview display
Click to display the operation condition of groups in a list of all groups.

Set temperature display
The set temperature is displayed here.

Room temperature display
The temperature of the indoor unit's intake is displayed here.

Operation mode display
The operation mode is displayed here.

Item	Description
Overview display	Switches to the screen where you can check the operation condition of all the groups, which are displayed in a list.
Update to most recent condition	Click [Update] to ensure the displayed items reflect the most recent operation condition. When [Auto] is selected, information is updated automatically every minute to reflect the latest information.
Batch operation	Click [Batch Operation] when you want to perform an operation on all groups in the block at once.
Select block	Use this to select which block to display and perform operations on.
Group icons	The operation condition is indicated by the icon that is displayed. To switch to the operation screen, click on the icon.
Operation mode display	The operation mode is displayed.
Set temperature display	The set temperature is displayed. During setback operation, the upper limit (top row) and lower limit (bottom row) temperatures will appear here.
Room temperature display	The temperature of the indoor unit's intake is displayed. Note: Because the temperature displayed here is of the indoor unit's intake, it could be different from the actual room temperature. Note: The temperature display can be set to display in either Celsius (°C) or Fahrenheit (°F).
Group name	Group names are displayed.

3-2 Performing Air Conditioner or General Equipment Operations

Given below is an explanation of how to perform air conditioner or general equipment operations that target one group, one block, or all groups.

3-2-1 Performing air conditioner operations that target one group

When you click on a group icon in the operation condition monitoring screen that shows the list of all groups or the list of groups in the selected block, the operation screen for that group will appear. The items shown in this screen are the current operation conditions. Modify the items you want to change and click [OK] to confirm the operation details. Click [Cancel] to return to the previous screen without making any changes.

Note: Only the ON/OFF operation is possible on the general equipment. No operation is possible on the general equipment on which the group operation is prohibited.

- At modes other than the setback

Block name
The name of the block is displayed here.

ON/OFF
Click to switch to ON or OFF.

Operation mode
Click to switch the operation mode.

Set temperature
Click to adjust the set temperature.

Air direction
Click to adjust the air direction.

Hold button
Turns ON/OFF the hold function.

Filter sign
Click to reset the filter sign.

Group name
The name of the group is displayed here.

Interlocked ventilator ON/OFF
Click to switch interlocked ventilator ON or OFF.

Fan speed of interlocked ventilator
Click to adjust the fan speed of the interlocked ventilator.

Prohibit remote controller operation
Click to select the items you do not want the remote controller to control.














Fan speed
Click to adjust the fan speed.

OK button
Click to confirm the operation details. You must press the OK button for the operation to take effect.

Cancel button
Click to cancel all operations.

- At the setback mode

Upper/Lower limit temperatures
Set the upper/lower limit temperatures here.

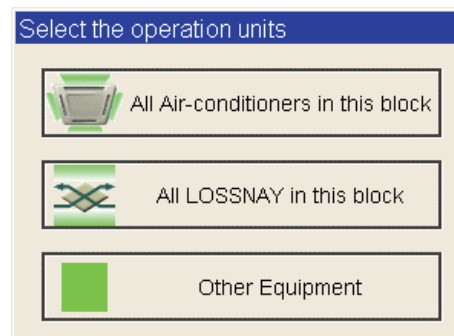
Item	Description
ON/OFF	Click [ON] or [OFF] to switch to ON or OFF.
Operation mode	Click [Cool], [Dry], [Fan], [Heat], [Auto] or [Setback] to switch the operation mode. If it is a ventilator group, select [Bypass], [Heat Recovery] or [Auto]. Note: Some unit models do not support certain operation modes. Unsupported operation modes are not displayed.
Set temperature	Click   to adjust the set temperature. For [Cool] and [Dry], the setting range is 67 ~ 87°F/19 ~ 30°C, for [Heat] it is 63 ~ 83°F/17 ~ 28°C, and for [Auto] it is 67 ~ 83°F/19 ~ 28°C. Note: The temperature setting range varies depending on the unit model. Note: If it is a ventilator model, this item is not displayed. Note: The temperature display can be set to display in either Celsius (°C) or Fahrenheit (°F).
Upper/Lower limit temperatures	Upper limit temperature will appear at the top, and the lower limit temperature will appear at the bottom. Click   to adjust the set temperature. The upper limit temperature is settable in the range of 69 ~ 87°F/21 ~ 30°C, and the lower limit temperature is settable in the range of 63 ~ 79°F/17 ~ 26°C. Note: Temperature ranges depend on the model.
Air direction	Click   to adjust the air direction. Note: If it is a model that does not support air direction adjustment, this item is not displayed. Note: Available functions vary depending on the unit model.
Fan speed	Click   to adjust the fan speed. Note: If it is a model that does not support fan speed adjustment, this item is not displayed. Note: Available functions vary depending on the unit model.
Prohibit remote controller operation	Select the items you do not want the remote controller to control. Click the word part of [ON/OFF], [Mode], [Set Temp] or [Filter Sign] and switch to prohibit  or enable  . Note: For ventilator models, there are no [Mode] item or [Set Temp] item.
Filter sign	Click [Reset] to specify whether to reset the filter sign. It is set to reset when a green indicator is displayed on the left of Reset ( Reset). Note: If filter signs are not triggered in the group, then this item is not displayed.
Interlocked ventilator ON/OFF	Click [ON] or [OFF] to switch interlocked ventilator ON or OFF. Note: For groups that are not connected to an interlocked ventilator, the items related to interlocked ventilators are not displayed.
Fan speed of interlocked ventilator	Click   to adjust the fan speed of the interlocked ventilator. Note: For groups that are not connected to an interlocked ventilator, the items related to interlocked ventilators are not displayed.
Hold function	Click [ON] or [OFF] to turn ON/OFF the hold function. Note: "Hold" is a function to keep the scheduled operation from taking place. When the Hold function is turned on, the current operation status is kept until it is turned off. Note: When this function is turned on, the following operation from the remote controller will be prohibited: Stop, operation mode change, preset temperature change. This cannot be overridden while the Hold function is effective.

3-2-2 Performing the operations that target one block

- (1) Select the block you want to operate as an entire block from the operation condition monitoring screen for block lists and click [Batch Operation]. When air conditioner groups, ventilator (LOSSNAY) groups, and general equipment groups exist together in the selected block, a new screen will appear to select the group.

Click one of the [All air-conditioners in this block], [All LOSSNAY in this block], or [Other Equipment] and the screen to set the batch operation will appear.

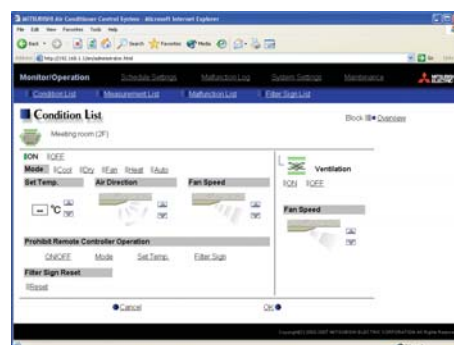
If the block that was selected has only air conditioner groups or only LOSSNAY groups or only general equipment groups, this selection screen will not appear.



- (2) After you have made the settings on the screen for batch operation, click [OK] and the operation settings for only the adjusted items will be sent to all the air conditioner, ventilator (LOSSNAY) groups, or general equipment groups contained in the selected block.

To return to the previous screen without performing any operations, click [Cancel].

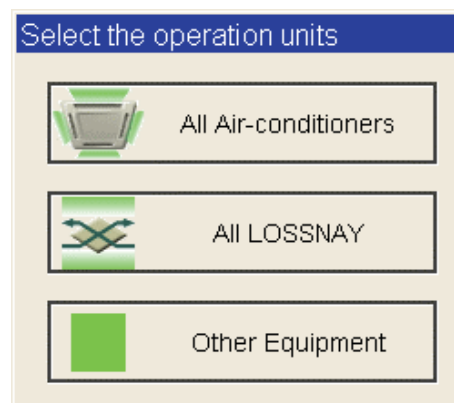
Note: When resetting the filter sign as part of a one-block batch operation, the accumulated ON time used to trigger the filter sign will be reset in all units belonging to the selected block, irrespective of whether or not the filter sign was triggered. Use the reset filter sign operation in a batch operation in a case such as when all the unit filters in the same batch are cleaned at once.



3-2-3 Performing the operations that target all groups

- (1) Click [Batch Operation] from the operation condition monitoring screen that displays all groups in a list. When air conditioner groups, ventilator (LOSSNAY) groups, and general equipment groups exist together in the system, a new screen will appear to select the group. Click one of the [All air-conditioners], [All LOSSNAY], or [Other Equipment] and the screen to set the batch operation will appear.

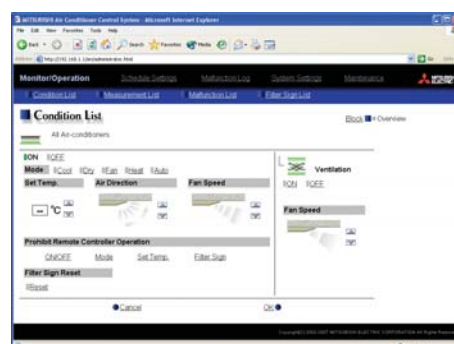
If the system has only air conditioner groups or only LOSSNAY groups or only general equipment groups, this selection screen will not appear.



- (2) After you have made the settings on the screen for batch operation, click [OK] and the operation settings for only the adjusted items will be sent to all the air conditioner, ventilator (LOSSNAY) groups, or general equipment groups.

To return to the previous screen without performing any operations, click [Cancel].

Note: When resetting the filter sign as part of an all-groups batch operation, the accumulated ON time used to trigger the filter sign will be reset in all units, irrespective of whether or not the filter sign was triggered. Use the reset filter sign operation in a batch operation in a case such as when all the unit filters are cleaned at once.



3-3 Checking the Measurement Condition

Given below is how to check the measurement condition either by list or graph.

3-3-1 Using a measurement list

Click [Monitor/Operation] in the menu, and click [Measurement List] in the sub menu to display a list of the measurement condition.

Update to most recent condition
Click to update the screen so that the most recent operation condition is shown.

Measured item
The measured item is displayed here.

Measurement value
The measurement value is displayed here.

Trend graph
Click to display the trend graph for each measurement value.

Item	Description
Trend graph	Switches to the screen where the measurement value can be checked by graph.
Update to most recent condition	Click [Update] to ensure the displayed items reflect the most recent operation condition. When [Auto] is selected, information is updated automatically every minute to reflect the latest information.
Measurement value	The present value is displayed. Note: The icon is displayed in vermilion when the measured value exceeds the upper limit alarm value or the lower limit alarm value that is set on Initial Setting Web.

3-3-2 Using a graph

Click [Trend Graph] on the measurement condition list screen, and select the measured item to be displayed. The measured value can be checked by graph. The graph can also be downloaded as a CSV file.

Note: [Temperature], [Humidity] can be displayed in the trend graph.

(Only a AI controller's Temperature and Humidity can be displayed.)

Update to most recent condition
Click to update the screen so that the most recent operation condition is shown.

Selection of measured item
Select the measured item to be displayed.

Measurement value
The measured value is displayed as a graph.

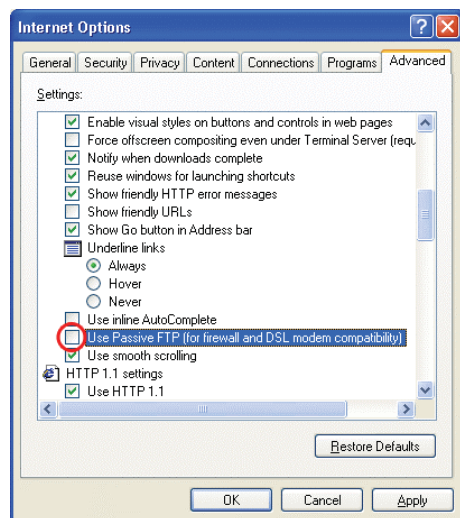
Download
Click to download the graph being displayed.

Overview display
Click to display the measurement value as a list.

Measurement date
Select the date when the value to be displayed is measured.

Upper/lower limit alarm value
The Upper/lower limit alarm value is displayed.

Item		Description
Overview		Switches to the screen where the measurement value can be checked as a list.
Update to most recent condition		Click [Update] to ensure the displayed items reflect the most recent operation condition.
Selection of measured item		Click the [Selection of measured item], and select the measured item to be displayed from the list. Note: When the peak cut function is used, selecting [Peak cut control] is possible, and the electric power and the control level can be displayed as a graph.
Measurement date		Select the date when the value to be displayed is measured. Note: The period of time that the graph for temperature/humidity can be displayed varies depending on the data saving interval. When the interval is 5 minutes, the graph can be displayed for 10 days, when 1 minutes, for 2 days. Note: The graph for peak cut control can be displayed for 3 days, the previous, the current, and the following day.
Temperature, humidity	Measurement value	The measured item is displayed as a graph. Note: The temperature/humidity data saving interval can be set on Initial Setting Web. (Select between 1 min./2 min./5 min.)
	Upper/lower limit alarm value	Upper/lower limit alarm value that is set on Initial Setting Web is displayed. When the measurement value exceeds the upper/lower limit alarm value, the area that is above/below than the upper/lower limit alarm value is displayed in yellow.

Item	Description																		
Download	<p>Click [Download] to download the graph being displayed. The data format of the downloaded data is as follows.</p> <table border="1"><thead><tr><th colspan="2">Item</th><th>Format</th></tr></thead><tbody><tr><td>First line</td><td>File type</td><td>121: Temperature data 122: Humidity data</td></tr><tr><td>Second line</td><td>Date</td><td>yyyy/mm/dd Note: The date format set on Initial Setting Web. will be applied.</td></tr><tr><td>Third line</td><td>Trend target</td><td>Temperature: "Address" + M-NET address + "-" + Sensor No. Humidity: "Address" + M-NET address + "-" + Sensor No.</td></tr><tr><td>Fourth line</td><td>Measured item</td><td>Temperature: "Time, Temperature(deg C)" Humidity: "Time, Humidity(%)"</td></tr><tr><td>Fifth line or later</td><td>Data</td><td>Temperature: hh:MM, Temperature Humidity: hh:MM, Humidity</td></tr></tbody></table> <p>Example of temperature data</p> <div><pre>121 01/04/2007 Address 50-1 Time, Temperature(deg C) 00:00,20.3 00:05,20.1 00:10,19.8 00:15,19.3 : 23:50,18.8 23:55,18.5</pre></div>	Item		Format	First line	File type	121: Temperature data 122: Humidity data	Second line	Date	yyyy/mm/dd Note: The date format set on Initial Setting Web. will be applied.	Third line	Trend target	Temperature: "Address" + M-NET address + "-" + Sensor No. Humidity: "Address" + M-NET address + "-" + Sensor No.	Fourth line	Measured item	Temperature: "Time, Temperature(deg C)" Humidity: "Time, Humidity(%)"	Fifth line or later	Data	Temperature: hh:MM, Temperature Humidity: hh:MM, Humidity
	Item		Format																
	First line	File type	121: Temperature data 122: Humidity data																
Second line	Date	yyyy/mm/dd Note: The date format set on Initial Setting Web. will be applied.																	
Third line	Trend target	Temperature: "Address" + M-NET address + "-" + Sensor No. Humidity: "Address" + M-NET address + "-" + Sensor No.																	
Fourth line	Measured item	Temperature: "Time, Temperature(deg C)" Humidity: "Time, Humidity(%)"																	
Fifth line or later	Data	Temperature: hh:MM, Temperature Humidity: hh:MM, Humidity																	
	<p>Note: When the data cannot be downloaded properly, uncheck the "Use Passive FTP (for firewall and DSL modem compatibility)" checkbox. (Refer to the image on the right.)</p>																		
																			

3-4 Checking the List of Malfunctioning Units

Click the menu item [Monitor/Operation] and then click the sub menu [Malfunction List]. A list of units that are currently malfunctioning appears.

All reset
Click to reset errors on all units as one batch operation.

Update to most recent condition
Click to update the screen so that the most recent operation condition is shown.

Group name
The name of the group is displayed here.

Unit address
The unit address is displayed here.

Number of malfunctioning units
The number of malfunctioning units is displayed here.

Error code
The error code is displayed here.

No.	Group Name	Unit Address	Error Code
1	Entrance	Address: 1	Error Code: 6607
2	Lobby (South)	Address: 2	Error Code: 6607
3	Lobby (East)	Address: 3	Error Code: 6607
4	Lobby (Center)	Address: 4	Error Code: 6607
5	Lobby (West)	Address: 5	Error Code: 6607
6	Waiting room	Address: 6	Error Code: 6607

Item	Description
Update to most recent condition	Click [Update] to ensure the displayed items reflect the most recent operation condition. When [Auto] is selected, information is updated automatically every minute to reflect the latest information.
All reset	Click [All Reset] when you want to reset the errors on all the malfunctioning units at once.
Number of malfunctioning units	The number of malfunctioning units is displayed.
Group name	The name of the group is displayed. Note: If a unit, such as an outdoor unit or system controller, has not been registered in a group that is the object of the operation, this area will be blank.
Unit address	The unit address is displayed.
Error code	The error code of the error that is causing the malfunction is displayed.

3-5 Checking the List of Units with a Triggered Filter Sign

Click the menu item [Monitor/Operation] and click the sub menu [Filter Sign List]. A list of the units with a triggered filter sign appears.

Update to most recent condition
Click to update the screen so that the most recent operation condition is shown.

Group name
The name of the group is displayed here.

Unit address
The unit address is displayed here.

All reset
Click to reset the filter sign on all units with triggered filter signs.

Number of units with triggered filter signs
The number of units with currently triggered filter signs is displayed here.

Reset units individually
Click to reset the filter sign for the group the units belong to.

Item	Description
Update to most recent condition	Click [Update] to ensure the displayed items reflect the most recent operation condition. When [Auto] is selected, information is updated automatically every minute to reflect the latest information.
All reset	Click [All Reset] when you want to reset the filter sign on all units with a triggered filter sign at once.
Number of units with triggered filter signs	The number of units with currently triggered filter signs is displayed.
Group name	The group name is displayed.
Unit address	The unit address is displayed.
Reset units individually	Click [Reset] when you want to reset the filter sign for the group the units belong to.

3-6 Setting Schedules

It is possible to use the annual schedule and today's schedule as well as additional functions for the weekly schedule.

Weekly schedule

(1) Frequency of operations per day

12 operations

(2) Operation items

[1] ON/OFF

[2] Operation mode([Cool], [Dry], [Fan], [Heat] , [Auto] or [Setback])

[3] Temperature setting (63 ~ 87°F/17~30°C)

Note: Settable temperature range varies according to model.

Note: The CITY MULTI model supports a temperature setting range of 53~83°F/12~28°C when in Heat mode.

[4] Prohibit/enable remote controller operation

(3) Time setting unit

1 min

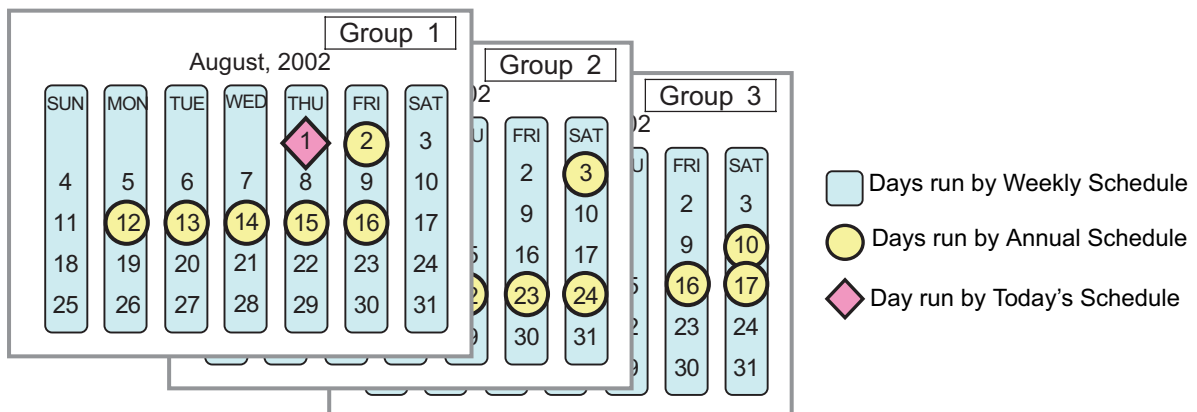
Annual schedule

Up to 50 days per year, such as public holidays and summer vacation can be scheduled as days that do not comply with the weekly schedule.

Today's schedule

A schedule for that day can be modified without modifying the weekly schedule or annual schedule.

It is possible to set different weekly/annual/today's schedules for each air conditioner group. Moreover, for any weekly/annual/today's schedule run for a particular day, the priority in which it is run will be from the highest and the order will be [Today's], [Annual], [Weekly].

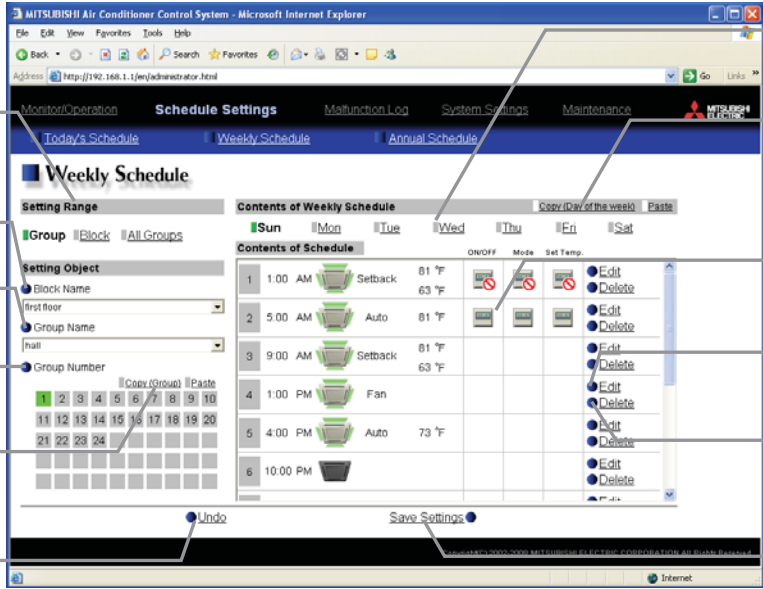


3-6-1 Setting the Weekly Schedule

Click the menu item [Schedule Settings] and click [Weekly Schedule] in the sub menu to display the Weekly Schedule setting screen. To set a weekly schedule, you first must select what will be the target of this schedule and then set the schedule details from Sunday right through to Saturday.

Note: When the contents of an operation are executed as part of a schedule these contents will continue to be in effect until they are changed by a schedule or browser etc. Therefore, if you are setting a schedule that is only for a particular day, be sure to set your schedule in a way that will not impact on the next day's operation.

For example, if you wish to prohibit operations being performed from the remote controller after 17:00, set a Prohibit operation for 17:00 and set an Enable operation for 23:59.



Setting Range
Select the range that scheduling will be set for.

Block Name
Select the block to be set.

Group Name
Select the group to be set.

Group Number
Select the group to be set.

Copy (Group) / Paste
Click to copy or paste a schedule between groups.

Undo button
Click to undo the changed.

Select a day of the week
Select which day to set the schedule for.

Copy (Day of the week) / Paste
Click to copy or paste a schedule between each day of the week.

Contents of Schedule
Operations set for the schedule are displayed here.

Edit button
Click to set a schedule operation.

Delete button
Click to delete a schedule operation.

Save Settings button
Click to save the contents of the schedule setting. The schedule settings will not be saved unless this button is pressed.

(1) Select the target for the schedule being set

(1-1) Select a particular group

If you wish to set a schedule for a particular group, select [Group] from the Setting Range box.

Select the name of the block that the group belongs to, and then select the group name in the Setting Object box. Alternatively it is possible to just select the group name and the group number. Once the group is selected, the contents of the schedule saved for that group will be displayed in the Contents of Schedule box.

Setting Range
☒ Group ☐ Block ☐ All Groups

Setting Object
☒ Block Name
 Tenant (2F)
☒ Group Name
 Tenant 1
☒ Group Number

1	2	3	4	5	6	7	8	9	10
11	12	13	14	15	16	17	18	19	20
21	22	23	24	25	26	27	28	29	30
31	32	33	34	35	36	37	38	39	40
41	42	43	44	45	46	47	48	49	50

(1-2) Select all groups in a block

If you want to set a schedule to be used by all groups in a block, select [Block] from the Setting Range box.

Select the name of the block that the groups belong to from the Setting Object box. Alternatively, if you click on a group number, the block that the group belongs to gets selected (groups cannot be selected unless they belong to a block).

Setting Range
☐ Group ☒ Block ☐ All Groups

Setting Object

☒ Block Name
Tenant (2F)


☐ Group Name


☒ Group Number


1	2	3	4	5	6	7	8	9	10
11	12	13	14	15	16	17	18	19	20
21	22	23	24	25	26	27	28	29	30
31	32	33	34	35	36	37	38	39	40
41	42	43	44	45	46	47	48	49	50

When air conditioner groups, ventilator (LOSSNAY) groups, and general equipment groups exist together in the selected block, a new screen will appear to select the group. Click one of the [All air-conditioners in this block], [All LOSSNAY in this block], or [Other Equipment] and the screen to set the batch operation will appear. If the system has only air conditioner groups or only LOSSNAY groups or only general equipment groups, this selection screen will not appear.

Select the operation units

 All Air-conditioners in this block

 All LOSSNAY in this block

 Other Equipment

Next a screen to select the schedule setup method will appear. Select either [New settings] or [Based on the following group settings]. If you plan to add to an existing setting, and then choose to base it on an existing setting and select the name of the group you want to base the setting on and click the [OK] button.

If you chose to make a new setting, the Contents of Schedule box will appear completely blank. If you chose to base your setting on an existing group, the contents of the schedule set for that group will appear in the Contents of Schedule box.

Schedule Settings

☐ New settings

☒ Based on the following group settings:
Tenant 1

Cancel OK

(1-3) Select all groups


When you want to set a schedule that will apply to all groups, select [All Group] in the Setting Range box.


When air conditioner groups, ventilator (LOSSNAY) groups, and general equipment groups exist together in the system, a new screen will appear to select the group. Click one of the [All air-conditioners], [All LOSSNAY], or [Other Equipment] and the screen to set the batch operation will appear.


If the system has only air conditioner groups or only LOSSNAY groups or only general equipment groups, this selection screen will not appear.

Setting Range
☐ Group ☐ Block ☒ All Group

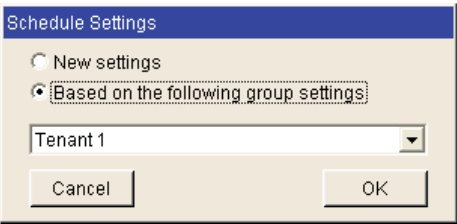
Select the operation units

 All Air-conditioners

 All LOSSNAY

 Other Equipment

Next a screen to select the schedule setup method will appear. Select either [New settings] or [Based on the following group settings]. If you plan to add to an existing setting, and then choose to base it on an existing setting and select the name of the group you want to base the setting on and click the [OK] button. If you chose to make a new setting, the Contents of Schedule box will appear completely blank. If you chose to base your setting on an existing group, the contents of the schedule set for that group will appear in the Contents of Schedule box.



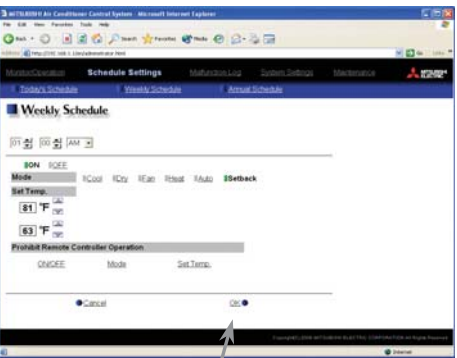
(2) Select the day of the week

Click the day of the week listed in the Contents of Weekly Schedule box you want to set the schedule for. You can select from Sunday through to Saturday.



(3) Set the contents of the schedule

When one of the [Edit] buttons in the Contents of Schedule box is clicked, a screen to set a schedule operation will appear. Use this screen to set when to run an operation and set the type of schedule operation (ON/OFF, operation mode, temperature setting, prohibit remote controller operation) and then press the [OK] button. It is also possible to set a schedule operation that is only an operation mode or temperature setting modification. To do this, simply limit your setting to the particular details you want to change. The upper/lower limit temperatures must be set to operate the unit in the Setback mode.



OK Button

Note: When setting a schedule for all groups or for a block, it is possible to set all operation modes such as Auto mode etc, but if some targeted air conditioner units do not have such a function, then those units will not run in the specified mode. When setting the schedule, consider what functions are supported by the air conditioner units.

Note: When setting a schedule for all groups or for a block, it is possible to set prohibit remote controller items individually. When allowing remote controller operation under K control, however, all items must be set enable.

Note: When setting a schedule for ventilator units, the temperature setting is not displayed. Moreover, the prohibit remote controller operation is simply [ON/OFF].

Note: Only the ON/OFF operation is possible on the general equipment.

(4) Copy a schedule to another day of the week or to another group

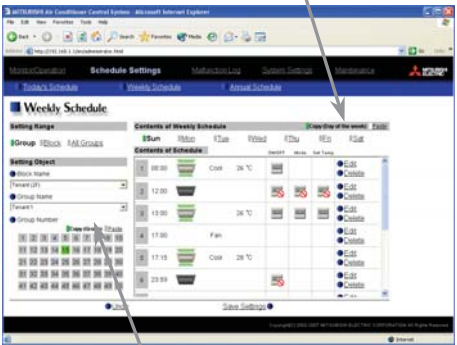
When copying a schedule between each day of the week, click “Copy (Day of the week)” button. The color of the button turns to green (which means the button is selected). Select the desired day, and click “Paste” button.

When copying the entire week’s schedule between groups, click “Copy (Group)” button. Select the desired group, and click “Paste” button.

Note: Copied schedule cannot be pasted to different type of equipment. For example, schedule copied on the air conditioner cannot be pasted to the ventilator equipment.

Note: The operation mode that can be pasted and the temperature setting range vary depending on the unit type.

Copy (Day of the week) / Paste

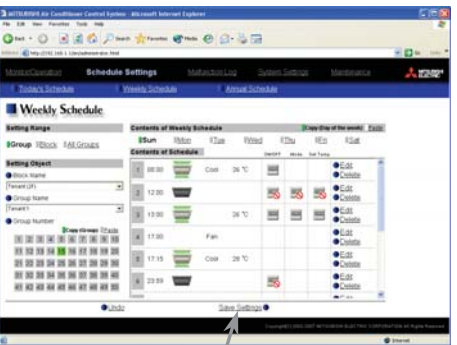


Copy (Group) / Paste

(5) Save the contents of schedule

After you have finished setting the contents of the schedule, save the schedule setting by clicking the [Save Settings] button. If the contents of the schedule setting have changed since the previous save, you can click the [Undo] button to restore the setting contents back to the saved settings.

Note: When saving a schedule setting for all groups or for a block containing multiple groups, it can take several minutes until the setting is complete due to the large number of units being set.



Save Settings button

3-6-2 Setting an Annual Schedule

Click the menu item [Schedule Settings] and click [Annual Schedule] in the sub menu to display the Annual Schedule setting screen. You can use the annual schedule to set schedules for days such as public holidays and summer vacation that need to be scheduled differently to the weekly schedule. For each air conditioner group, it is possible to set 50 day-long settings up to 24 months into the future (including the current month). Settings for days that have passed will be deleted automatically.

To set an annual schedule, first select the range and object of the schedule setting and then set the contents of the schedule for each schedule pattern. After setting the contents of the schedule pattern (Pattern 1 – 5), allocate the schedule pattern you wish to use for the days such as public holidays or summer vacation you are setting the annual schedule for.

Note: When the contents of an operation are executed as part of a schedule these contents will continue to be in effect until they are changed by a schedule or browser etc. Therefore, if you are setting a schedule that is only for a particular day, be sure to set your schedule in a way that will not impact on the next day's operation.

For example, if you wish to prohibit operations being performed from the remote controller after 17:00, set a Prohibit operation for 17:00 and set an Enable operation for 23:59.

Setting Range
Select the range that scheduling will be set for.

Block Name
Select the block to be set.

Group Name
Select the group to be set.

Group Number
Select the group to be set.

Copy (Group) / Paste
Click to copy or paste a schedule between groups.

Undo button
Click to undo the changed.

Select the schedule pattern
Select which pattern you wish to set the schedule for.

Contents of Schedule
Operations set for the schedule are displayed here.

Copy (Pattern) / Paste
Click to copy or paste a schedule between each pattern.

Edit button
Click to set a schedule operation.

Delete button
Click to delete a schedule operation.

Calendar
Use the calendar to specify the days that the selected schedule pattern will be allocated for.

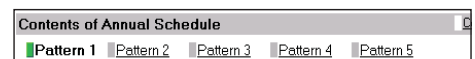
Save Settings button
Click to save the contents of the schedule setting. The schedule settings will not be saved unless this button is pressed.

(1) Select the target for the schedule being set

Follow the procedure outlined for the weekly schedule (see 3-6-1) to select the range and object of the schedule setting.

(2) Select the schedule pattern you want to set

In the Contents of Annual Schedule box situated at the upper right part of the screen, choose the pattern you wish to set from Pattern 1 - 5. (If you do not need to modify any of the existing schedule pattern settings, then skip steps (2) and (3).)



(3) Set the contents of the schedule setting

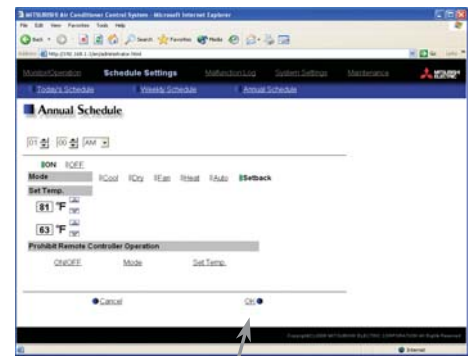
When one of the [Edit] buttons in the Contents of Schedule box is clicked, a screen to set a schedule operation will appear. Use this screen to set when to run an operation and set the type of schedule operation (ON/OFF, operation mode, temperature setting, prohibit remote controller operation) and then press the [OK] button. It is also possible to set a schedule operation that is only an operation mode or temperature setting modification. To do this, simply limit your setting to the particular details you want to change. The upper/lower limit temperatures must be set to operate the unit in the Setback mode.

Note: When setting a schedule for all groups or for a block, it is possible to set all operation modes such as Auto mode etc, but if some targeted air conditioner units do not have such a function, then those units will not run in the specified mode. When setting the schedule, consider what functions are supported by the air conditioner units.

Note: When setting a schedule for all groups or for a block, it is possible to set prohibit remote controller items individually. When allowing remote controller operation under K control, however, all items must be set enable.

Note: When setting a schedule for ventilator units, the temperature setting is not displayed. Moreover, the prohibit remote controller operation is simply [ON/OFF].

Note: Only the ON/OFF operation is possible on the general equipment.

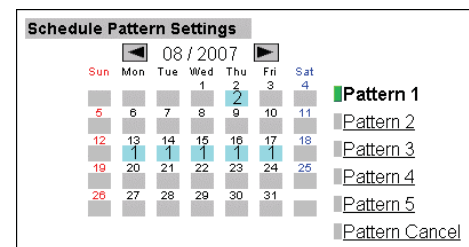


OK Button

(4) Specify the day(s) for pattern allocation

Allocate the set schedule pattern for days such as public holidays or summer vacation that has scheduling requirements different to the weekly schedule.

To allocate a schedule pattern to a day, first click the pattern you wish to allocate to select it and then select the day in the calendar by clicking on the rectangle corresponding to the day. When selected, the day will display the number of the pattern that has been allocated. If you wish to remove a pattern allocation from a day, select [Pattern Cancel] and then click on that day's rectangle.



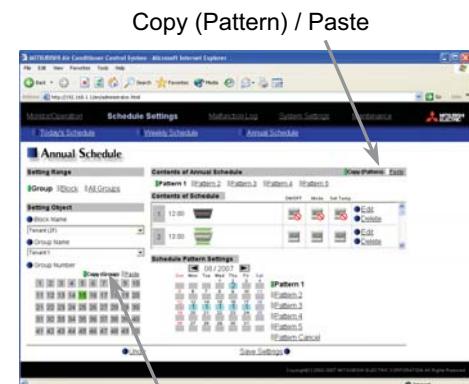
(5) Copy a schedule to another pattern or to another group

When copying a schedule between each pattern, click "Copy (Pattern)" button. The color of the button turns to green (which means the button is selected). Select the desired pattern, and click "Paste" button.

When copying all patterns of schedules or an allocated day of the pattern between each group, click "Copy (Group)" button. Select the desired group, and click "Paste" button.

Note: Copied schedule cannot be pasted to different type of equipment. For example, schedule copied on the air conditioner cannot be pasted to the ventilator equipment.

Note: The operation mode that can be pasted and the temperature setting range vary depending on the unit type.



Copy (Group) / Paste

(6) Save the contents of schedule

After you finished setting the contents of the schedule, save the schedule setting by clicking the [Save Settings] button. If the contents of the schedule setting have changed since the previous save, you can click the [Undo] button to restore the setting contents back to the saved settings.

Note: When saving a schedule setting for all groups or for a block containing multiple groups, it can take several minutes until the setting is complete due to the large number of units being set.



Save Settings button

3-6-3 Modifying Today's Schedule

Click the menu item [Schedule Settings], or click [Today's Schedule] in the sub menu to display the Today's Schedule setting screen. Today's Schedule can be used to set a valid schedule for just the current day without modifying the weekly or annual schedule.

To set Today's Schedule, first select the range and object of the setting and then set the contents of the schedule.

Note: When the contents of an operation are executed as part of a schedule these contents will continue to be in effect until they are changed by a schedule or browser etc. Therefore, if you are setting a schedule that is only for a particular day, be sure to set your schedule in a way that will not impact on the next day's operation.

For example, if you wish to prohibit operations being performed from the remote controller after 17:00, set a Prohibit operation for 17:00 and set an Enable operation for 23:59.

Setting Range
Select the range that scheduling will be set for.

Block Name
Select the block to be set.

Group Name
Select the group to be set.

Group Number
Select the group to be set.

Copy (Group) / Paste
Click to copy or paste a schedule between groups.

Undo button
Click to undo the changed.

Contents of Schedule
Operations set for the schedule are displayed here.

Edit button
Click to set a schedule operation.

Delete button
Click to delete a schedule operation.

Save Settings button
Click to save the contents of the schedule setting. The schedule settings will not be saved unless this button is pressed.

(1) Select the target for the schedule being set

Follow the procedure outlined for the weekly schedule (see 3-6-1) to select the range and object of the schedule setting.

(2) Set the contents of the schedule setting

When one of the [Edit] buttons in the Contents of Schedule box is clicked, a screen to set a schedule operation will appear. Use this screen to set when to run an operation and set the type of schedule operation (ON/OFF, operation mode, temperature setting, prohibit remote controller operation) and then press the [OK] button.

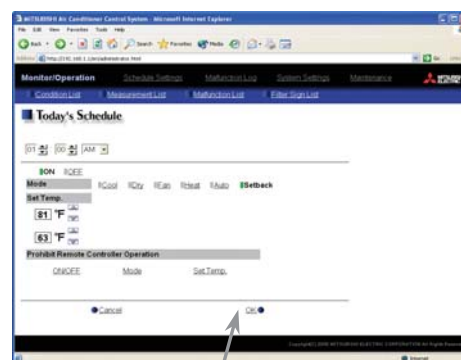
It is also possible to set a schedule operation that is only an operation mode or temperature setting modification. To do this, simply limit your setting to the particular details you want to change. The upper/lower limit temperatures must be set to operate the unit in the Setback mode.

Note: When setting a schedule for all groups or for a block, it is possible to set all operation modes such as Auto mode etc, but if some targeted air conditioner units do not have such a function, then those units will not run in the specified mode. When setting the schedule, consider what functions are supported by the air conditioner units.

Note: When setting a schedule for all groups or for a block, it is possible to set prohibit remote controller items individually. When allowing remote controller operation under K control, however, all items must be set enable.

Note: When setting a schedule for ventilator units, the temperature setting is not displayed. Moreover, the prohibit remote controller operation is simply [ON/OFF].

Note: Only the ON/OFF operation is possible on the general equipment



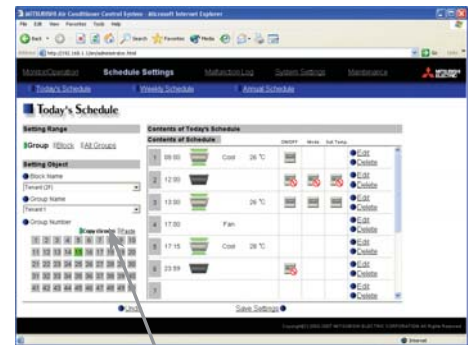
OK Button

(3) Copy a schedule to another group

When copying a schedule of the day between each group, click “Copy (Group)”. The color of the button turns to green (which means the button is selected). Select the desired group, and click “Paste” button.

Note: Copied schedule cannot be pasted to different type of equipment. For example, schedule copied on the air conditioner cannot be pasted to the ventilator equipment.

Note: The operation mode that can be pasted and the temperature setting range vary depending on the unit type.

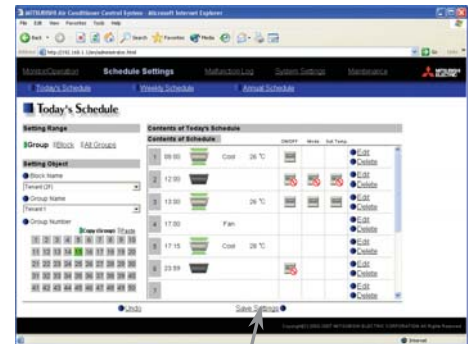


Copy (Group) / Paste

(4) Save the contents of schedule

After you have finished setting the contents of the schedule, save the schedule setting by clicking the [Save Settings] button. If the contents of the schedule setting have changed since the previous save, you can click the [Undo] button to restore the setting contents back to the saved settings.

Note: When saving a schedule setting for all groups or for a block containing multiple groups, it can take several minutes until the setting is complete due to the large number of units being set.



Save Settings button

3-7 Checking the Malfunction Log

Click the menu item [Malfunction Log] to display a log of unit errors (the last 64 errors). Click the sub menu [Communication Error] to display, the M-NET communication error log.

Unit error log
Click to display the unit error log.

Clear log
Click to clear the error log.

Update to most recent condition
Click to update the screen so that the most recent operation condition is shown.

Occurred time
The date and time of error is displayed here.

Communication error log
Click to display the communication error log.

Error source address
The unit address of where the error occurred is displayed here

Error detection source address
The unit address of where the error was detected is displayed here.

Error code
The error code of the error is displayed here.

Error recovery date and time
The date and time of the error recovery is displayed here.

	Time Occurred	Address(Detection)	Error Code	Time Recovered
1	04/04/2007 09:34:13	050 (050)	5010	04/04/2007 09:34:34
2	04/04/2007 09:32:21	050 (050)	5010	04/04/2007 09:32:45
3	17/03/2007 19:31:05	065 (075)	1302	17/03/2007 20:14:59
4	29/01/2007 18:24:12	050 (050)	5010	31/01/2007 11:12:12
5	27/01/2007 17:08:09	053 (013)	1102	27/01/2007 21:04:01
6	26/01/2007 19:35:32	050 (050)	5010	29/01/2007 18:21:29
7	26/01/2007 14:38:31	050 (050)	5010	26/01/2007 19:32:53
8	25/01/2007 08:48:13	050 (050)	5010	26/01/2007 14:39:20

Item	Description
Unit error log	Click [Unit Error] to display the unit error log.
Communication error log	Click [Communication Error] to display the M-NET communication error log.
Update to most recent condition	Click [Update] to ensure the displayed items reflect the most recent condition. When [Auto] is selected, information is updated automatically every minute to reflect the latest information.
Clear log	Click [Clear Log] to clear the error log that is being displayed.
Time Occurred	The date and time of when the error occurred is displayed.
Error source address	The unit address of where the error occurred is displayed.
Error detection source address	The unit address of where the error was detected is display.
Error code	The error code of the error is displayed.
Time Recovered	The date and time of the error recovery is displayed.

3-8 Setting the Current Date and Time

Click the menu item [System Settings] and the Date/Time Setting screen will appear. Enter the current date and time and then press the [Save settings] to set it.

Summer time setting
Click to set the daylight saving time.

Refresh
Acquires the current Date and Time from GB-24A.

Current date/time
Enter the current date and time here.

Save settings
Click to set the current date and time.

Item	Description
Current date/time	Enter the current date and time.
Save Settings	Click the [Save Settings] to set the current date and time.
Refresh	Acquires the current Date and Time from GB-24A.
Summer time setting	<p>Click and tick the “Automatically adjust clock for daylight saving changes” box to adjust the daylight saving time automatically, and select the applicable country.</p> <p>Note: If the applicable country is not in the selection bar, select “Custom Settings”. Click “Custom Settings” button that will appear on the right to set the daylight saving time.</p> <p>Daylight saving date and time Set the daylight saving time.</p> <p>Custom Setting Screen</p>

3-9 Checking the Send Mail Log

Click the menu item [Maintenance] to display the log of mail sent when an error occurred and after error recovery. In order for a mail to be sent when an error occurs, the date related to sending the mail must be set using Initial Setting Web.

Clear log
Click to clear the send mail log.

Update to most recent condition
Click to update the screen so that the most recent condition is shown.

Send date/time
The date and time when the mail was sent is displayed here.

Error source address
The unit address of where the error occurred is displayed here.

Error code
The error code is displayed here.

Send mail status
This indicates whether the mail was successfully sent by displaying [OK] or [NG].

Error status
This indicates whether mail was sent when error [Occurred] or after error [recovery].

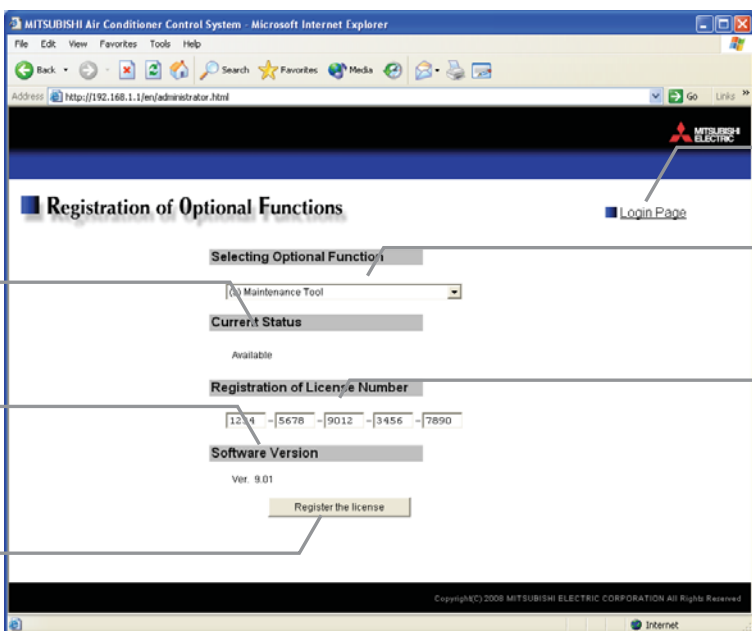
	Date/Time	Unit Address	Error Code	Error Status	Send Mail Status
1	04/04/2007 09:36:13	050	5010	Recovery	OK
2	04/04/2007 09:35:20	050	5010	Occurred	OK
3	04/04/2007 09:34:33	050	5010	Recovery	OK
4	04/04/2007 09:33:15	050	5010	Occurred	OK
5	17/03/2007 20:15:08	065	1302	Recovery	OK
6	17/03/2007 19:31:56	065	1302	Occurred	OK
7	17/03/2007 15:27:11	053	1202	Occurred	NG
8	17/03/2007 11:25:21	050	6607	Recovery	NG

Item	Description
Update to most recent condition	Click [Update] to ensure the displayed items reflect the most recent condition. When [Auto] is selected, information is updated automatically every minute to reflect the latest information.
Clear log	Click [Clear Log] to clear the send mail log.
Send date/time	The date and time of when the error occurred is displayed.
Error source address	The unit address of where the error occurred is displayed. Note: When an error occurs on the general equipment that is connected via DIDO controller, M-NET address of the DIDO controller will be displayed. (Which means an error occurs on one of the general equipment that is connected to the DIDO controller)
Error code	The error code of the error is displayed.
Error status	This indicates whether mail was sent when error occurred or after error recovery.
Send mail status	This indicates whether the mail was successfully sent by displaying [OK] or [NG].

4 Registering a License for Optional Functions

Given below is an explanation on how to register a license for optional functions. In the Login screen for managers (see 3-1), click [Registration of Optional Functions] and the Registration of Optional Functions screen will appear.

Please ask the dealer you purchased the product from for more details on the optional functions and how to purchase a license number.



Sub menu
Click to return to the Login Page.

Optional function selection box
Select the optional function you want to register.

License number entry field
Enter the license number required for registration.

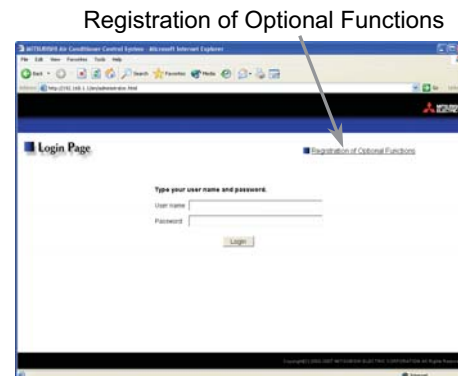
Current Status
This indicates whether the optional function is available for use.

Software version
Software version is displayed.

Registration of license button
Click to register your license.

(1) Open the Registration of Optional Function screen

Enter the web page address in the web browser address field, click the Enter key on the keyboard to display the Login screen (see 3-1). Click on this screen's menu item [Registration of Optional Functions] to open the Registration of Optional Functions screen.



(2) Register an Optional Function

First select the optional function you wish to register from the selection box in the Selecting Optional Function section. When an optional function is selected, the Current Status section will indicate whether it is available for use.

Next enter the license number you purchased for the optional function in the license number entry field and click the [Registration of license] button. Once this is done, the optional function will be available for use.

If you were unsuccessful in registering an optional function, check that you did not enter the wrong license number by mistake, that the correct optional function was selected from the selection box, and that the GB-24A main unit's date and time are set correctly.

Selecting Optional Function <input type="text" value="(a) Maintenance Tool"/>
Registration of license number <input type="text" value="1234"/> - <input type="text" value="5678"/> - <input type="text" value="9012"/> - <input type="text" value="3456"/> - <input type="text" value="7890"/>

Please be sure to put the contact address/telephone number on
this manual before handing it to the customer.