

MANUFACTURED FOR:
MITSUBISHI ELECTRIC US, INC.

Condensate Management Kit

CMA-1

for use with:

PVFY, PVA & MVZ Multi-Position Air Handler Indoor Units

INSTALLATION MANUAL

FOR INSTALLER

For safe and correct use, please read this installation manual thoroughly before installing the Condensate Management Kit.

English

Contents

CONTENTS..... 2

1. INSPECT SHIPMENT 3

2. SAFETY PRECAUTIONS 3

3. INSTALLATION CONSIDERATIONS 3

4. CHECKING PARTS..... 4

5. INSTALLATION INSTRUCTIONS 5

1. Inspect Shipment

Upon receipt of equipment, carefully inspect it for possible damage. Take special care to examine the unit if the carton is damaged. If damage is found, it should be noted on the carrier's freight bill.

Damage claims should be filed with the carrier immediately. Claims of shortages should be filed with the seller within 5 days.

2. Safety Precautions

Carefully read this section, always observe for safety, and securely install the optional parts.

- Be sure to observe the cautions described here: They include critical contents for safety.
- The following indications show the classifications for danger, and possible consequences following incorrect handling.
- After installation, perform a test run and make sure that there is no abnormality, and ask your customer to keep this installation sheet with the instruction manual at all times. Also ask the customer to transfer these manuals to a new user if the user changes.

Symbols used in the text

⚠ Warning:

This symbol denotes incorrect handling could lead to death or serious injury

⚠ Caution:

This symbol denotes incorrect handling could lead to injury or damage the house and household articles

- **Do not touch the heat exchanger fins.**
 - Improper handling may result in injury.
- **When handling the product, always wear protective equipment.**
 - Improper handling may result in injury.

⚠ Warning:

- **Ask the dealer or specialist for installation.**
 - If installed incorrectly by user, water leak, electric shock, fire, etc could result.
- **Carefully install the kit according to this installation.**
 - Incorrect installation could cause water leak, electric shock or refrigerant leak.

⚠ Caution:

- **Do not place polyethylene bags in reach of young children.**
 - Putting them over the head will block breathing passages, which could result in suffocation.

⚠ Caution:

- **Do not use in any special environment. Using in any place exposed to oil (including machining oil), steam and sulfuric gas may deteriorate the performance significantly or give damage to the component parts.**
- **Do not install in any place where acidic or alkaline solution or special spays are often used. Doing so may cause an electric shock or malfunction.**
- **Do not install damaged equipment.**

⚠ Caution:

- **If refrigerant piping is necessary, securely execute insulation so that condensation does not occur.**
 - Incomplete insulation will cause condensation on surface of pipe, etc. and moisture will dri, which could wet ceiling, floor or other areas.
- **If wiring for power supply is necessary, use only specified wires that comply with current capacity.**
 - Using other wires could cause leak, heat generation, fire, etc.
- **If drain is necessary, lay piping for secure drain, referring to instructional manual, and maintain the temperature to prevent condensation.**
 - Incomplete piping will cause water leak, which could wet ceiling, floor or household goods.

3. Installation Considerations

As a result of innovative multi-position design, the air handler may be converted from its original configuration to a downflow position without the need for a stability kit or other external fitting. Operation in the downflow position may result in excess condensate buildup.

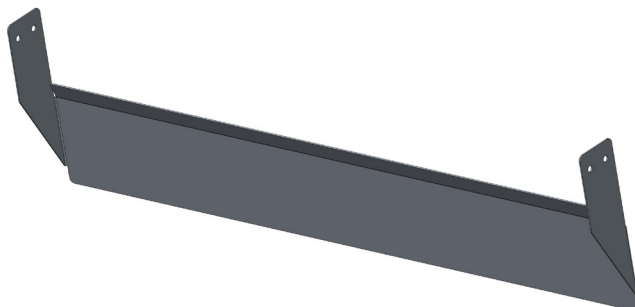
This Condensate Management Kit should be used to mitigate such water runoff.

4. Checking Parts

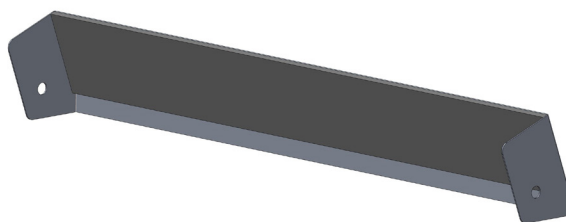
QTY 2 - OUTER COIL BAFFLES

QTY 2 - INNER COIL BAFFLES

QTY 4 – SCREWS #8-1/2" SLOTTED HEX HEAD



Outer Coil Baffles



Inner Coil Baffles



Screws #8-1/2" Slotted Hex Head

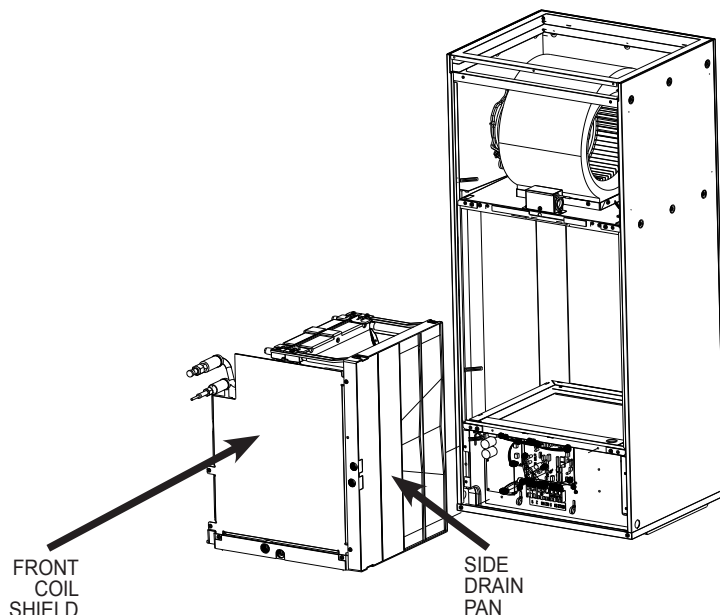
5. Installation Instructions

See www.mylinkdrive.com (<http://meus1.mylinkdrive.com/Accessories/index.html>) for electronic copy of install manual with color pictures.

A. Remove the coil assembly from the unit per the indoor unit installation manual-downflow installation section.

For installation manual, please refer to mylinkdrive.com.

With the coil removed from the unit as shown, follow the steps below.

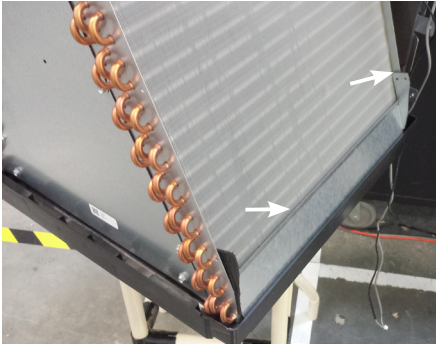
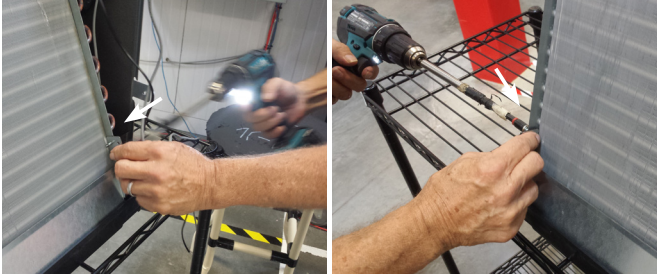


Instructions

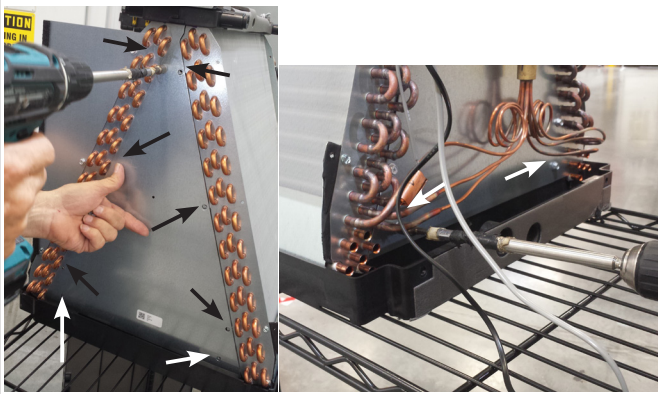

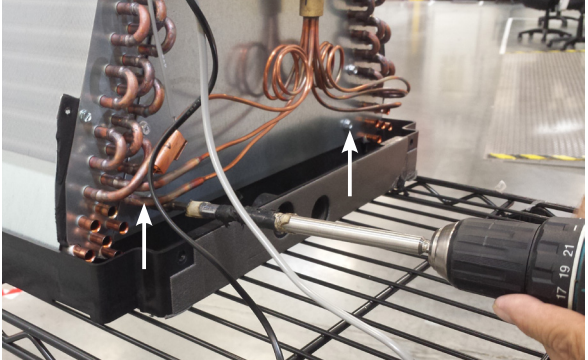
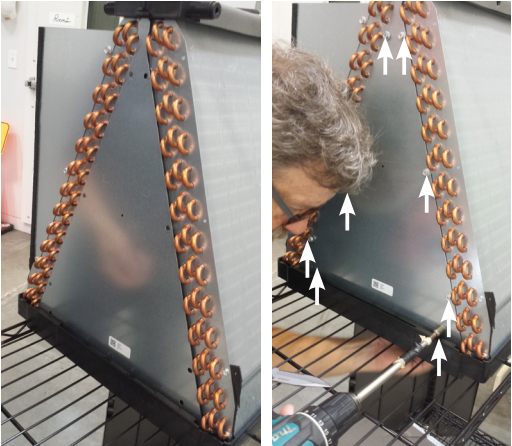
Illustration

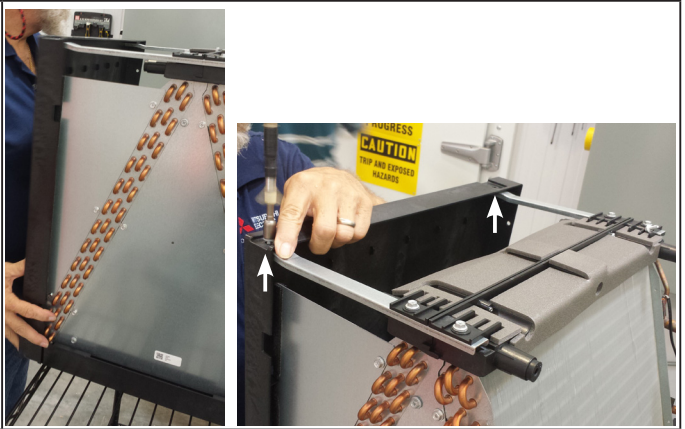
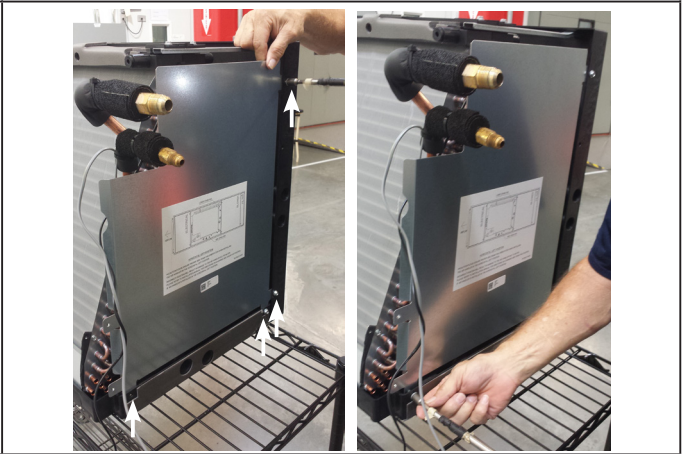
A1	Remove screws and front coil shield to gain access, saving screws to put back.	
A2	Remove lower screw from rear shield and discard one screw.	
A3	Remove side drain pan to gain access, saving screws to put back.	

B. Install the outside baffles as shown below.

Instructions		Illustration
B1	The baffle should rest against the coil fins and the drain pan and fit tightly between the coil end plates.	
B2	Install the 2 provided screws from the outside to hold the baffle in place. Repeat the outside baffle installation on the opposite side.	

C. To install the inside baffles follow the steps below.

	Instructions	Illustration
C1	Remove rear triangle cover, remove 2 lower screws on front triangle cover, saving screws to put back.	
C2	Slide baffles over the lip of the pan on both sides and align fixing holes with lower screw clips.	
C3	Replace front triangle cover 2 lower screws sandwiching the baffles between the drain pan and the triangle cover.	
C4	Replace rear triangle cover and all screws sandwiching the baffles between the drain pan and the triangle cover.	

	Instructions	Illustration
C5	Replace side drain pan and all screws.	
C6	Replace front shield and all screws.	
C7	Install the coil assembly into the unit per the indoor unit installation manual - downflow installation section. Set the blower external static pressure per the installation manual for downflow.	

This product is designed and intended for use in the Commercial,
light-industrial and residential environment.

Please be sure to put the contact address/telephone number on
this manual before handing it to the customer.

A large, empty rectangular box with a thin black border, intended for the user to write the contact address and telephone number before handing the manual to the customer.

Manufactured for MITSUBISHI ELECTRIC US, INC.

www.mitsubishielectric-usa.com

Toll Free: 800-433-4822