

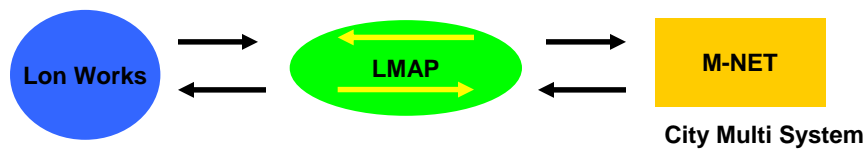
City Multi LMAP

Commissioning & Communications

Made Easy

What is LMAP ?

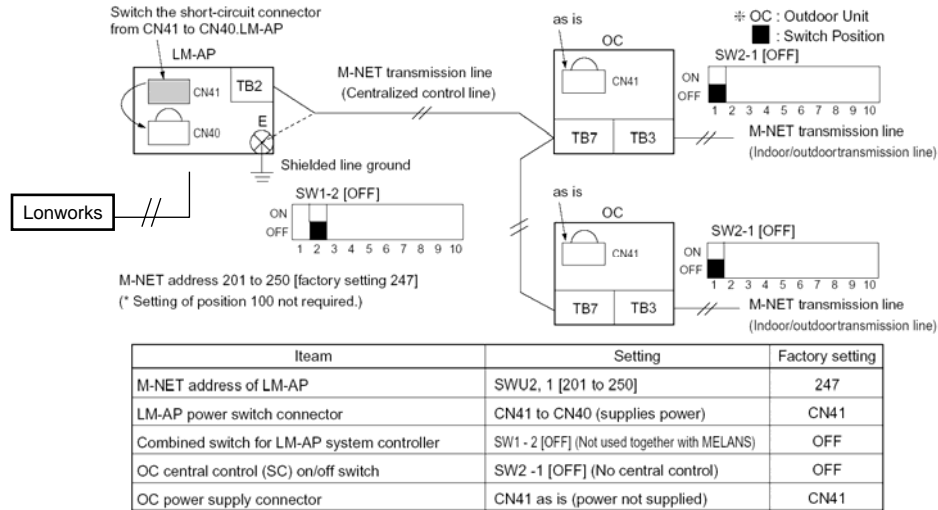
Protocol converter between Lon Works and M-NET



Operational and Communication Feature Available

	Item
Operation	Request On/Off
	Request Mode
	Setpoint from network(Both cool and heat)
	Request Fanspeed
	Request Local Prohibit On/Off
	Request Local Prohibit mode
	Request Local Prohibit SetPoint
	Request All Off
Monitor	On/Off run state
	Mode state
	Setpoint state(both cool and heat)
	FanSpeed state
	Thermo On/Off state
	Temperature state of indoor
	Alarm state
	Local Prohibit On/Off state
	Local Prohibit mode state
	Local Prohibit SetPoint state

Set-up previsions “ WHEN NOT ” using MELANS

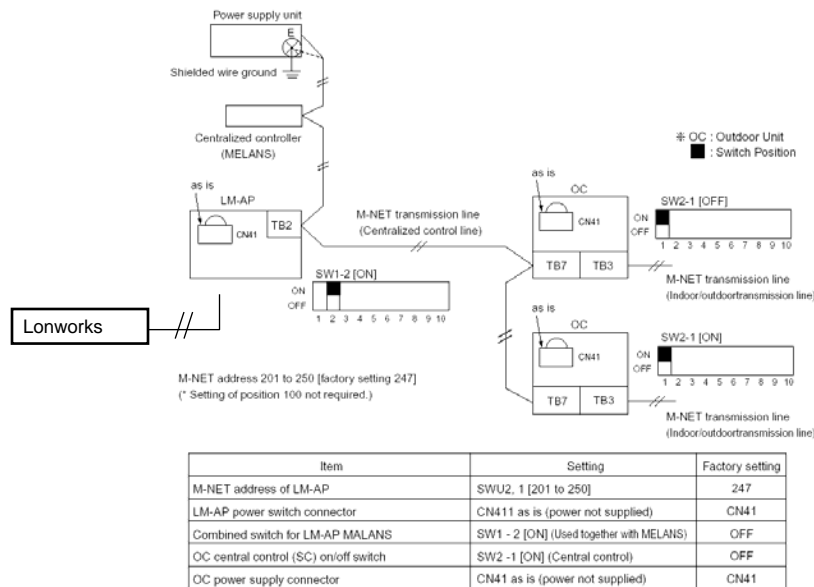


Set-up previsions “ WHEN NOT ” using MELANS

Additional steps and precautions to follow during set-up:

- Do not connect Lonwork wires to such time the LMAP initialization is fully completed
- Ensure Outdoor and Indoor unit are commissioned properly and operational
- Ensure all necessary Dipswitch and Connectors are verified as per above example
- Note additional Dipswitch setting may be necessary depending on application or function request
- Ensure LMAP is wired to Outdoor unit TB7 before applying power to LMAP
- Apply LMAP power, initialization process begins – LED2 will light
- Wait 10-15 minutes for initialization, once completed LED2 is no longer be lit
- If LED2 still remains lit remove LMAP power and double check for proper settings and start again
- You may reference additional trouble shooting measures in the installation manual if necessary
- Switch LMAP SW1-9 “ON” starting TEST RUN operations from LMAP device
- If all has been completed properly all the Indoor unit controllers will show TEST RUN.
This works as a verification of communication from LMAP to City Multi equipment
- Once all has been verified proceed in connecting Lonwork wiring so the 3rd party integrator can complete commissioning on the flip side.

Set-up previsions “ WHEN ” using MELANS



Set-up previsions “ WHEN ” using MELANS

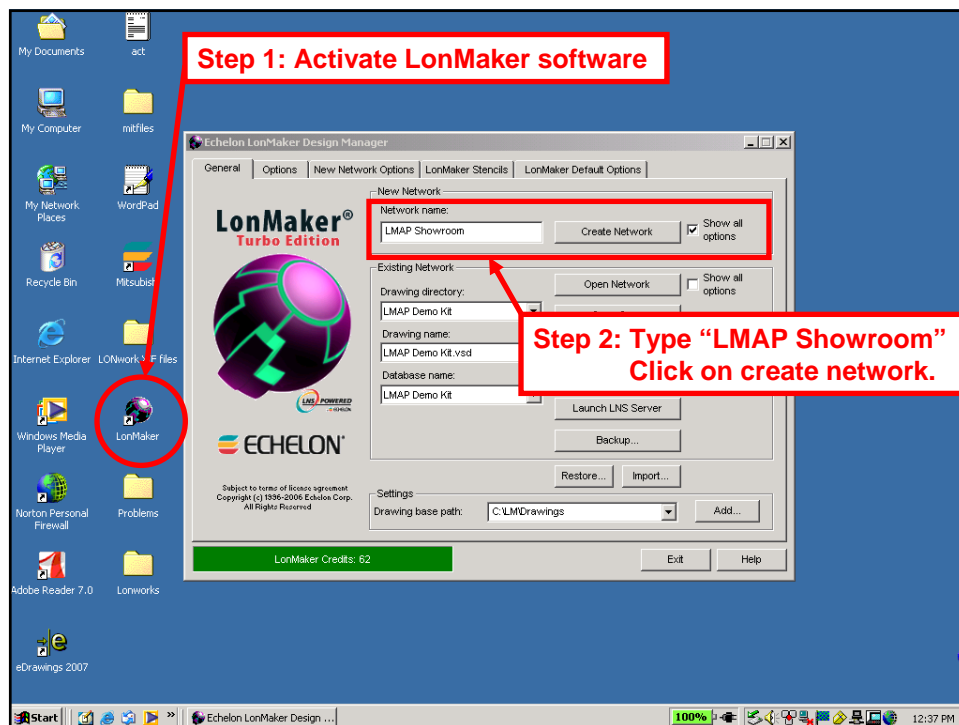
Additional steps and precautions to follow during set-up:

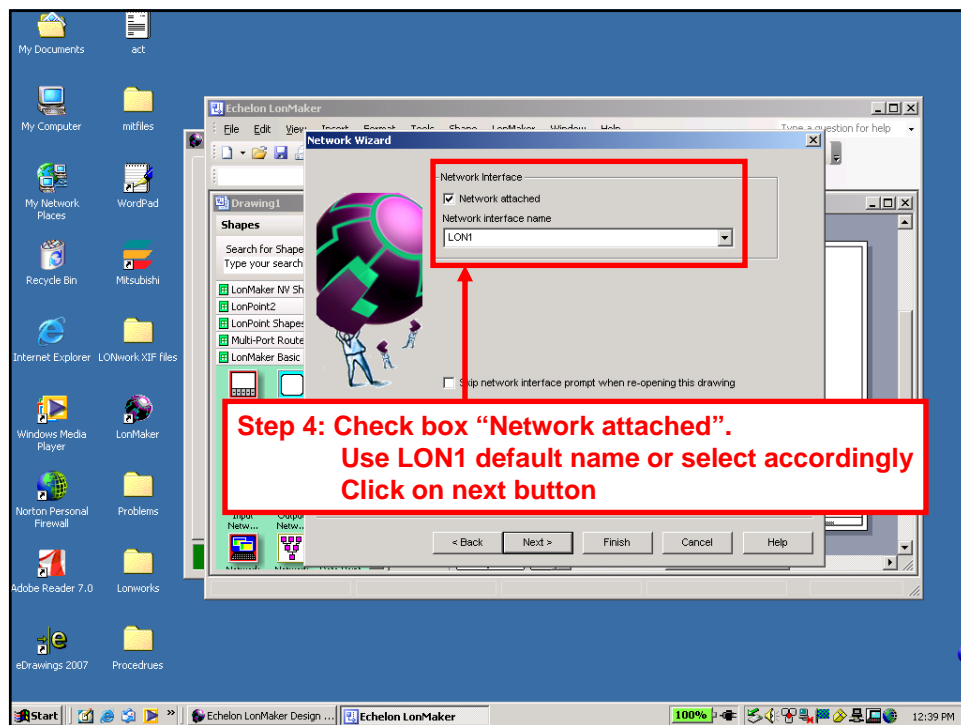
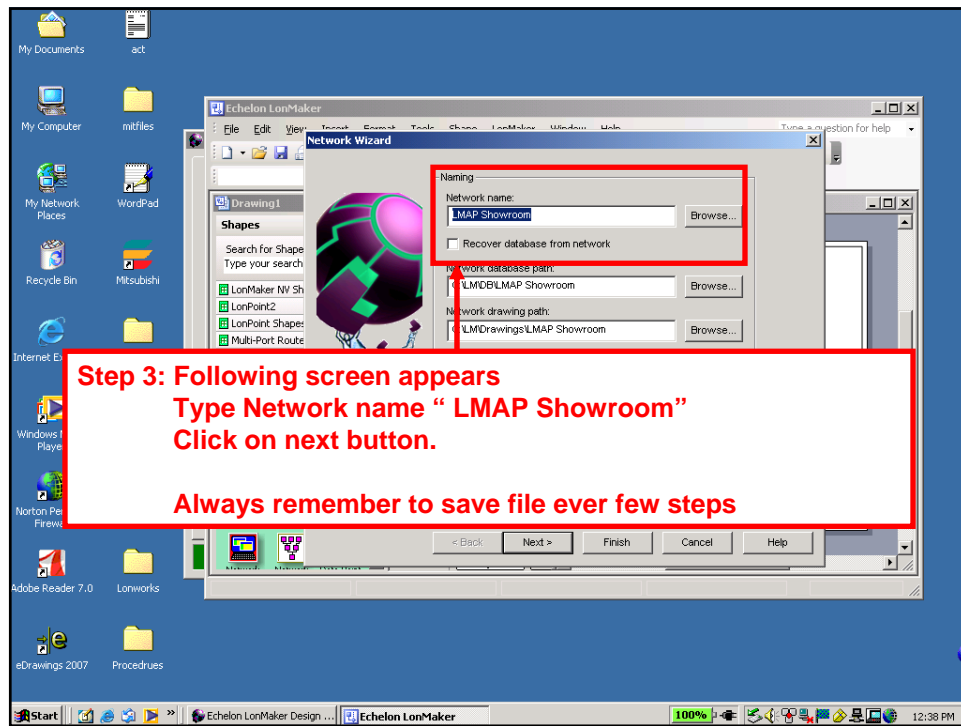
- Do not connect Lonwork wires to such time the LMAP initialization is fully completed
- Ensure Outdoor and Indoor unit are commissioned properly and operational
- Ensure all necessary Dipswitch and Connectors are verified as per above example
- Note additional Dipswitch setting may be necessary depending on application or function request
- Ensure LMAP is wired properly with centralized controllers, power supply and Outdoor units TB7 before applying power to LMAP
- Ensure centralized controller Indoor unit groups have been programming with LMAP address (247)
- Apply LMAP power, initialization process begins – LED2 will light
- Wait 10-15 minutes for initialization, once completed LED2 is no longer be lit
- If LED2 still remains lit remove LMAP power and double check for proper settings and start again
- You may reference additional trouble shooting measures in the installation manual if necessary
- Switch LMAP SW1-9 “ON” starting TEST RUN operations from LMAP device.
- If all has been completed properly all the Indoor unit controllers will show TEST RUN.
This works as a verification of communication from LMAP to City Multi equipment
- Once all has been verified proceed in connecting Lonwork wiring so the 3rd party integrator can complete commissioning on the flip side.

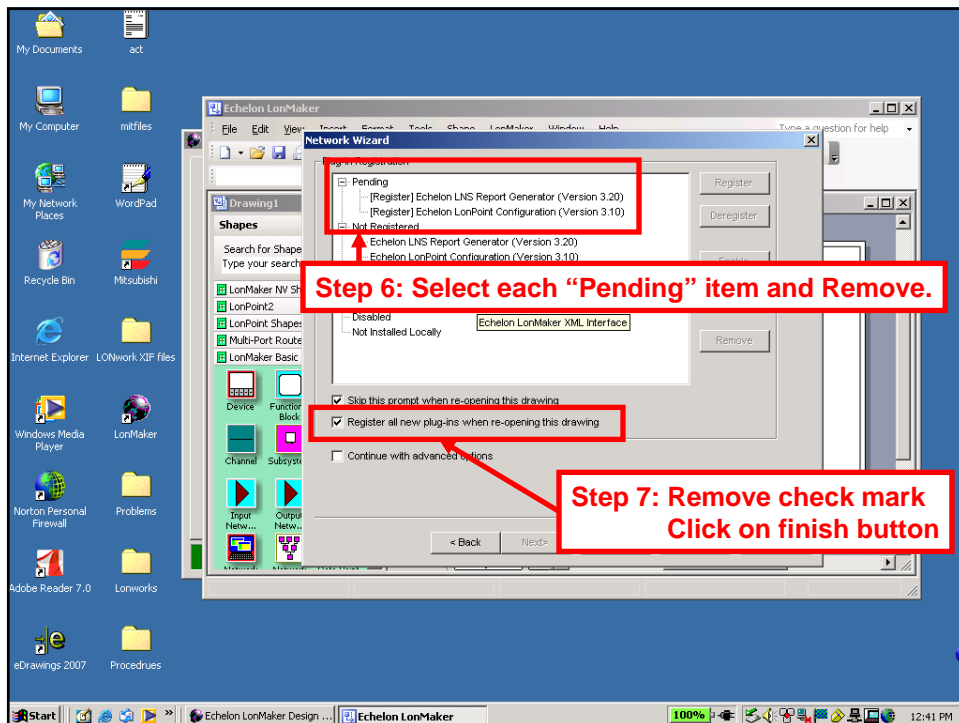
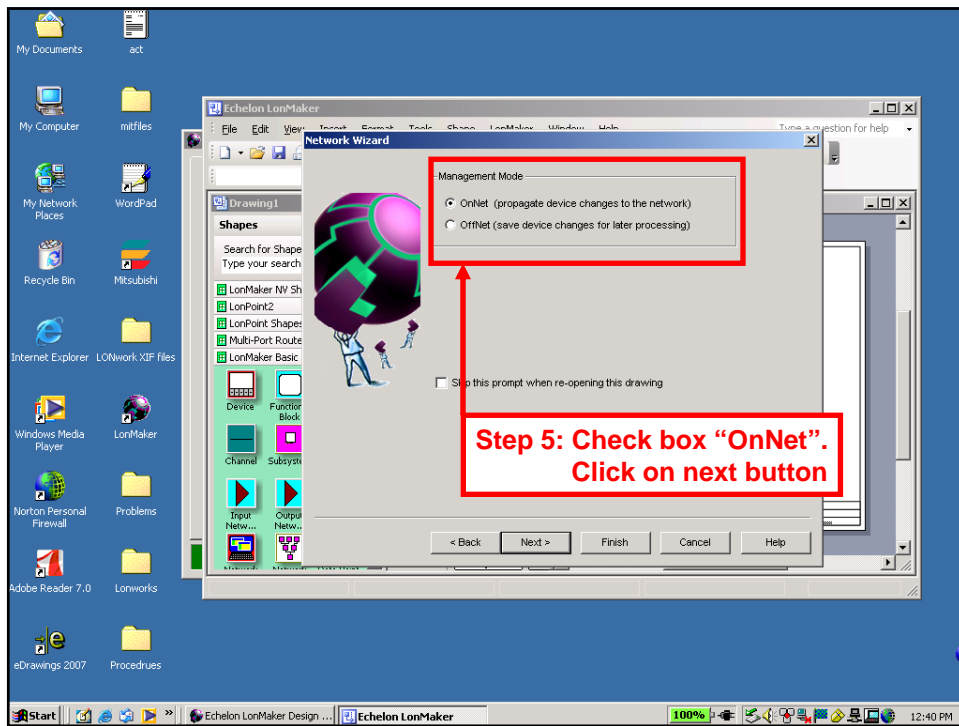
Commissioning LMAP

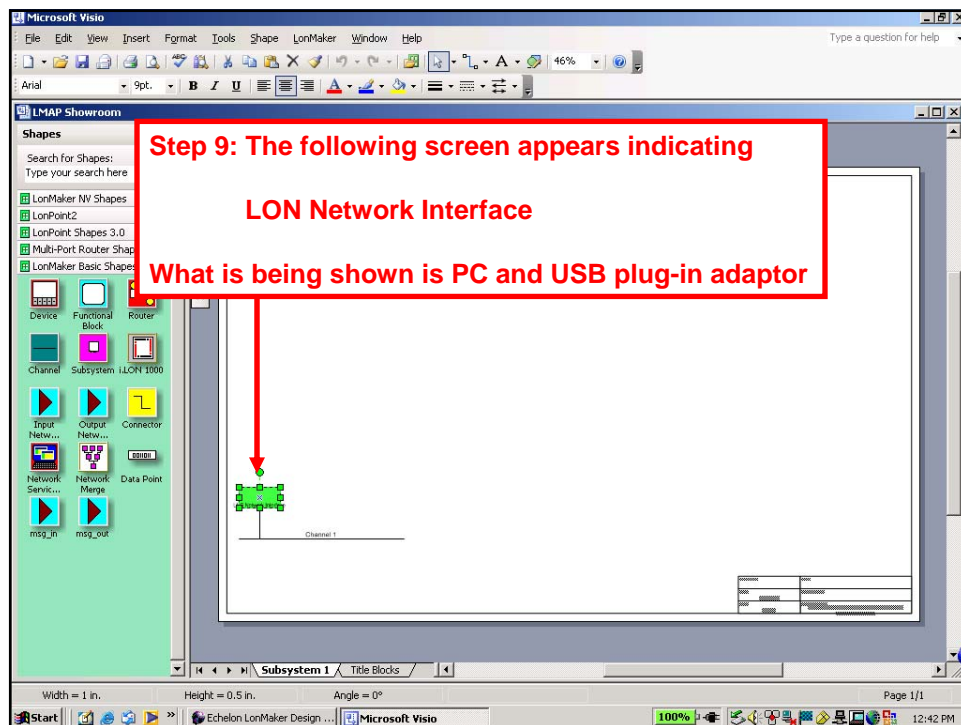
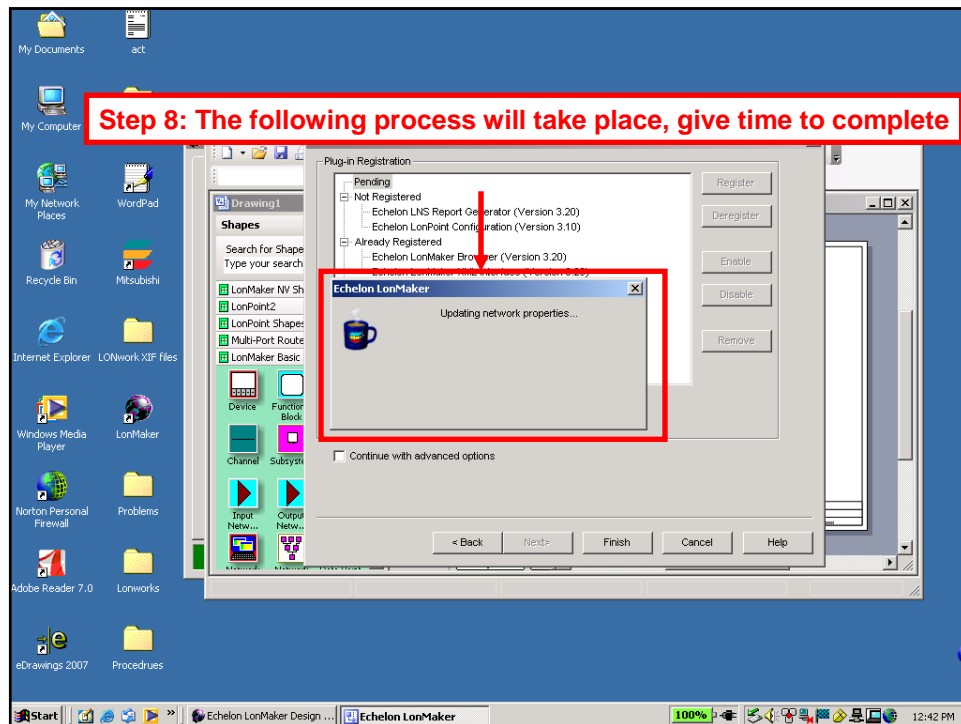
Necessary items required:

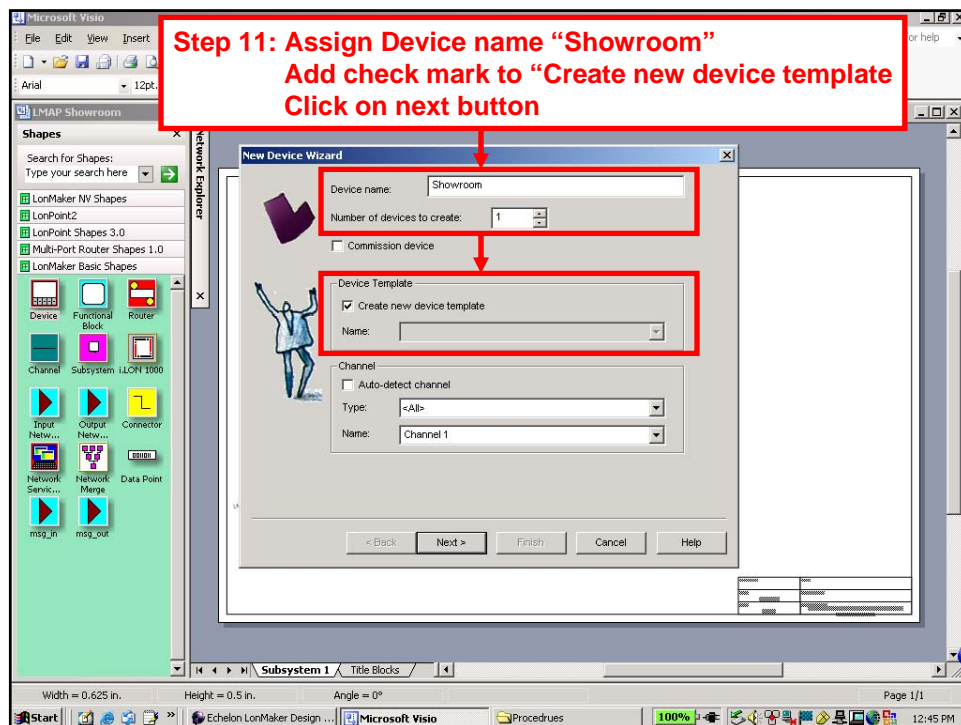
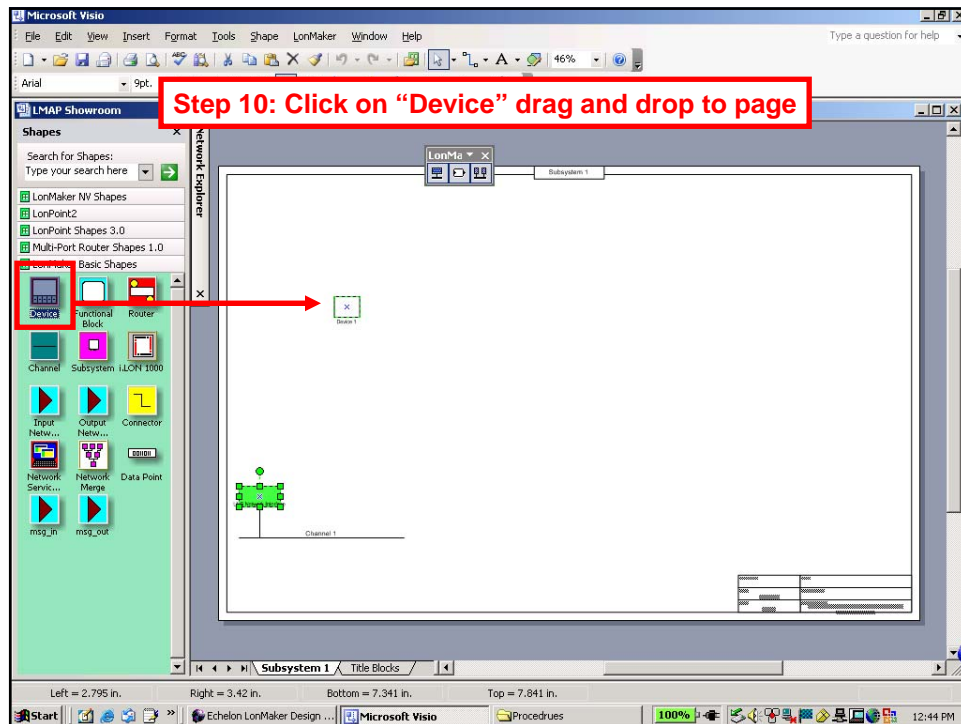
- Lonmaker Turbo Edition Software
Model 37000-32 LONMAKER PROF TURBO
- U10 USB Network Interface – TP/FT-10
- LMAP .XIF file available from MESCA
- Experienced 3rd party integrator

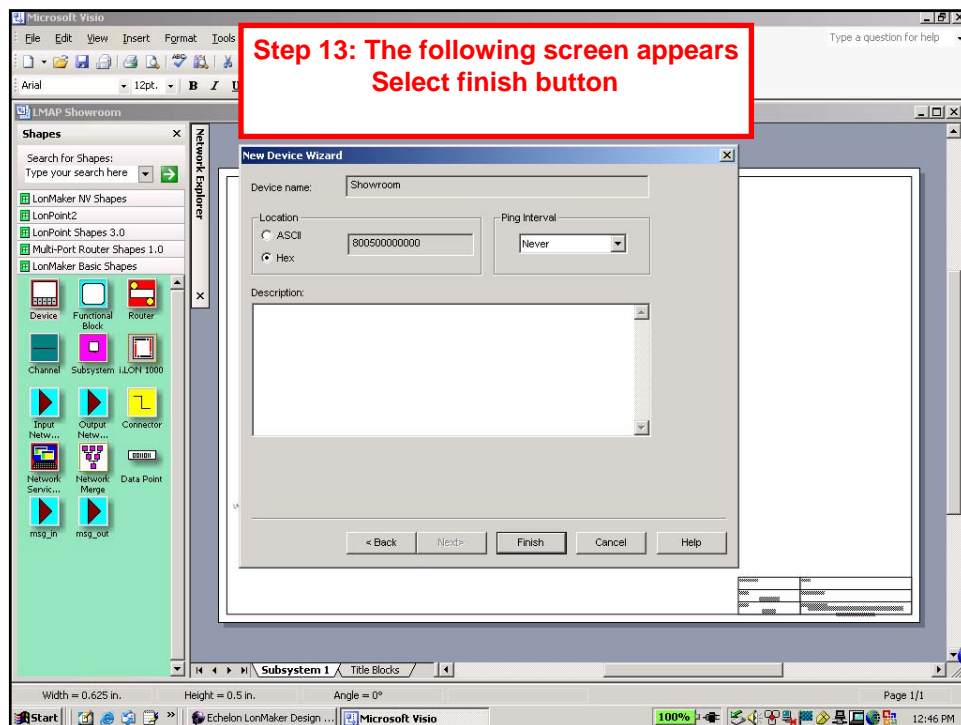
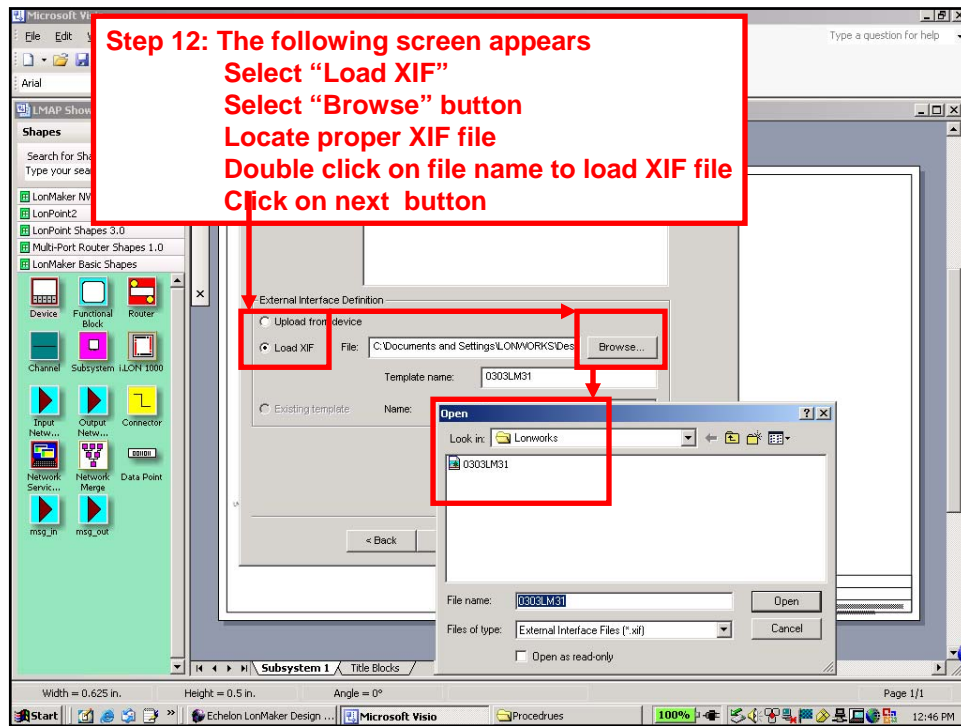


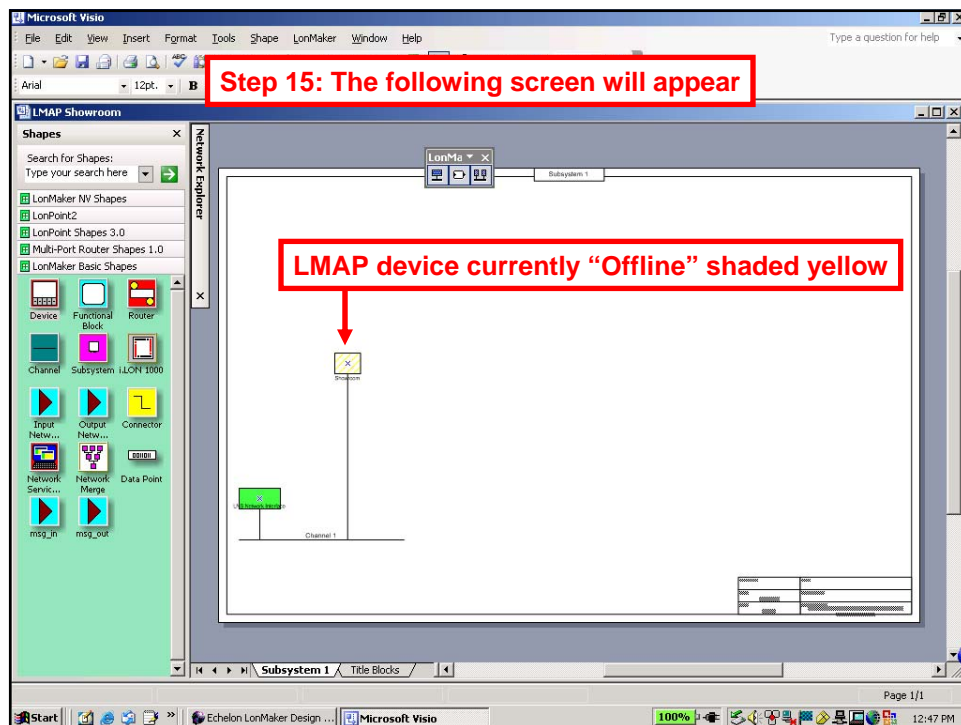
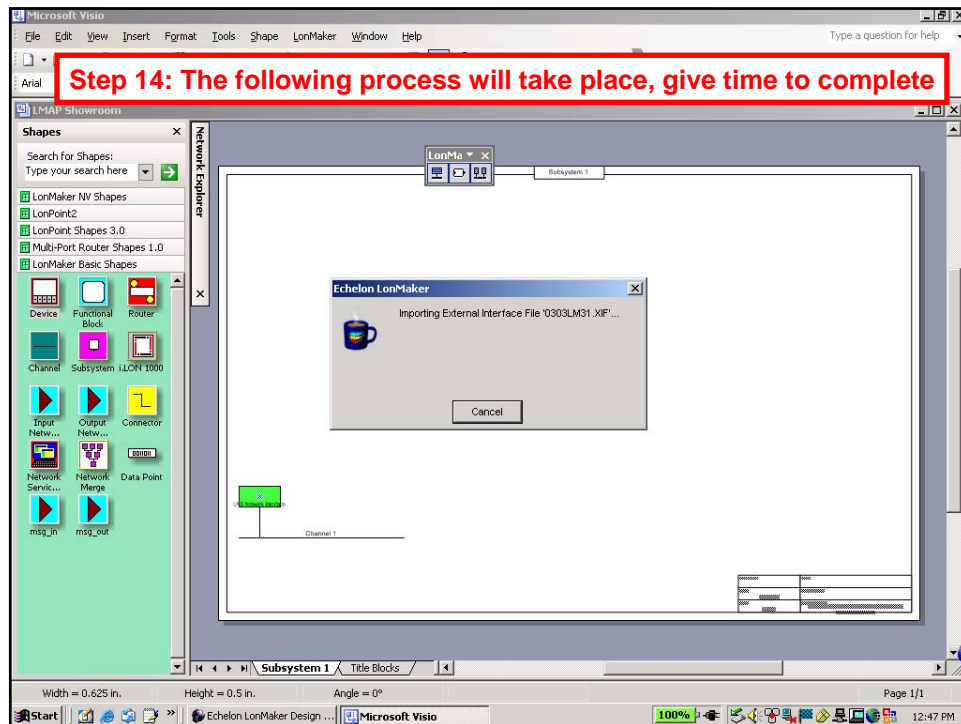


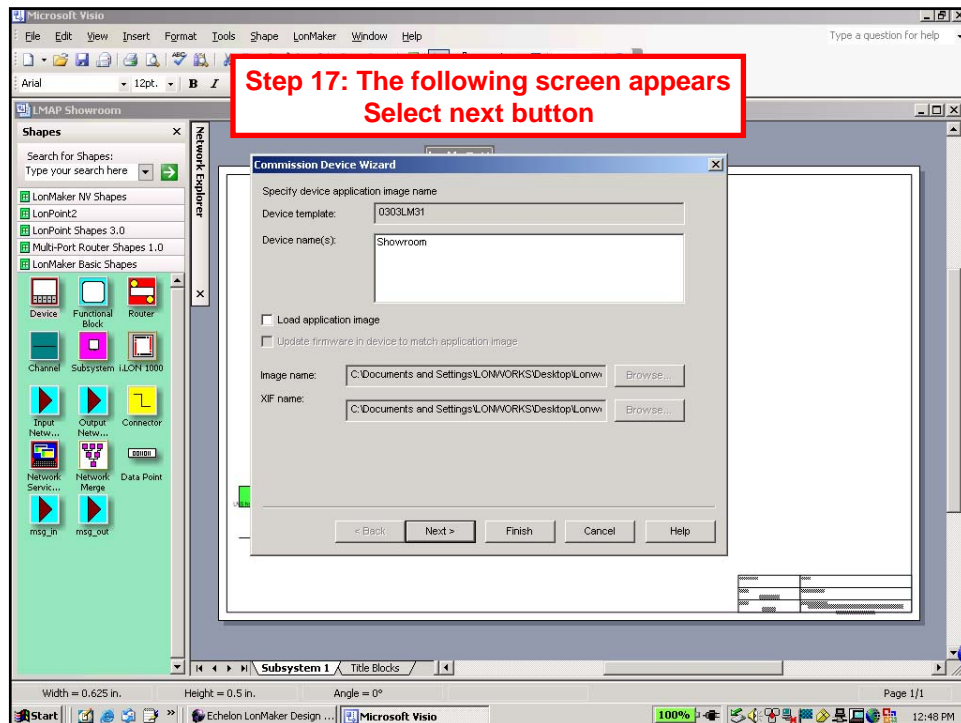
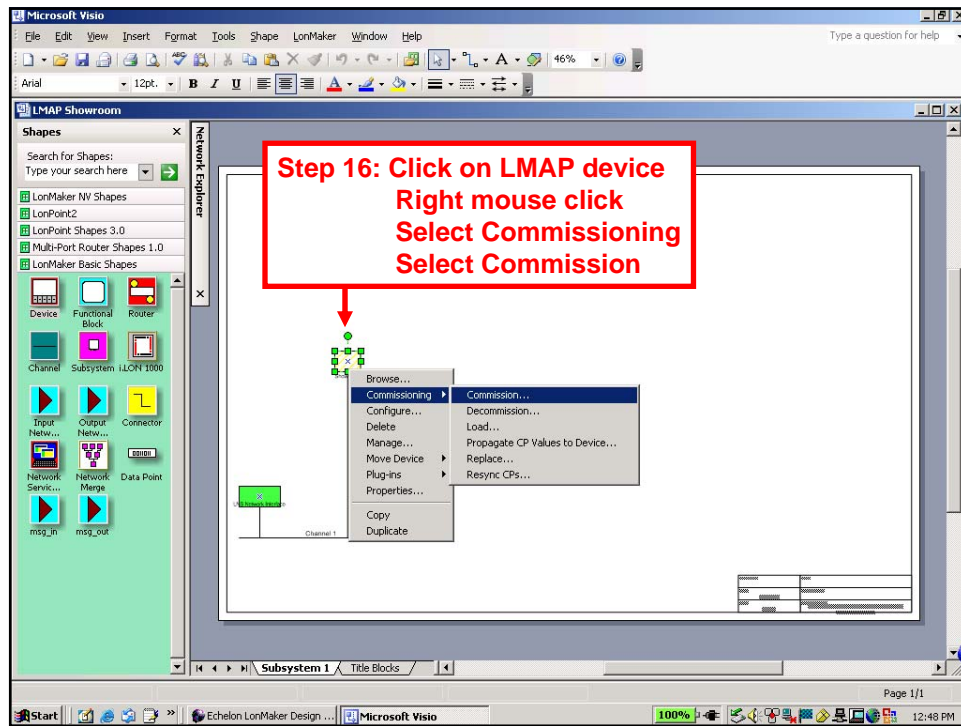


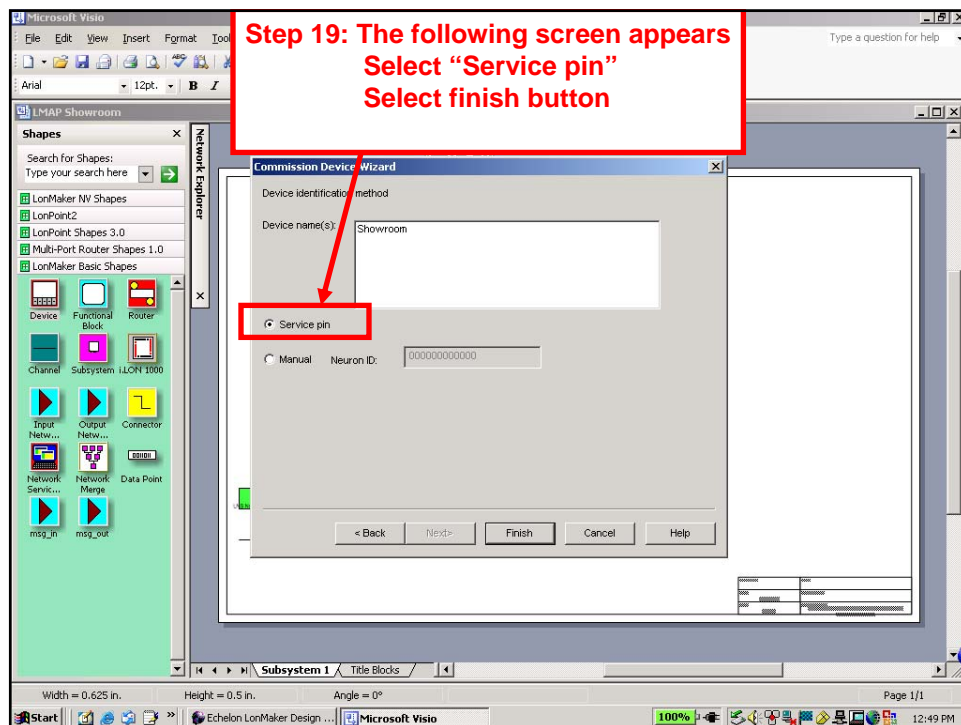
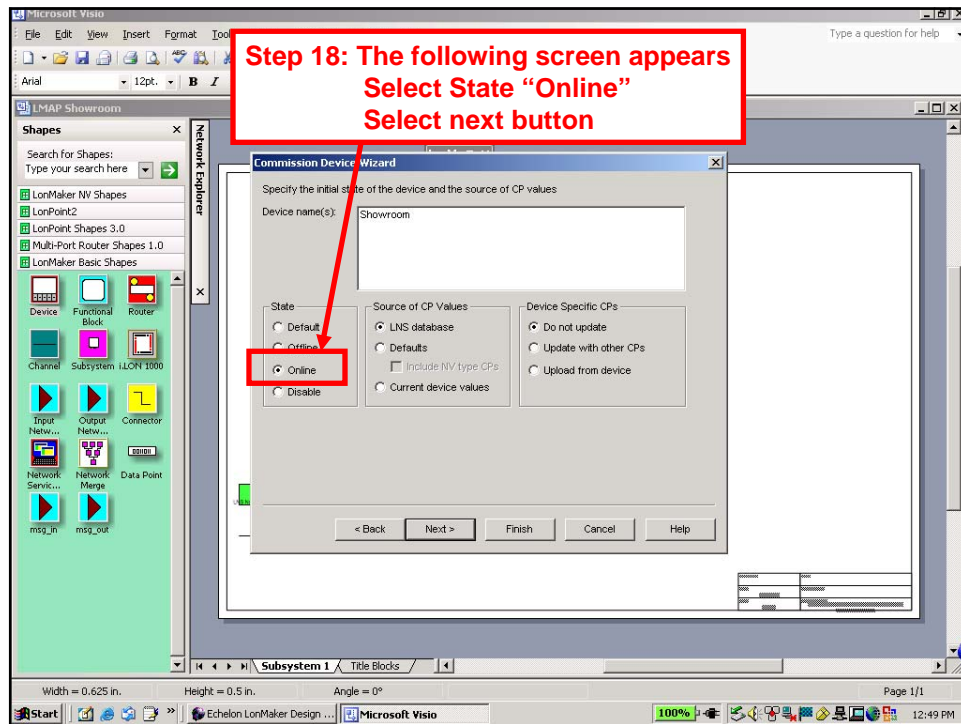


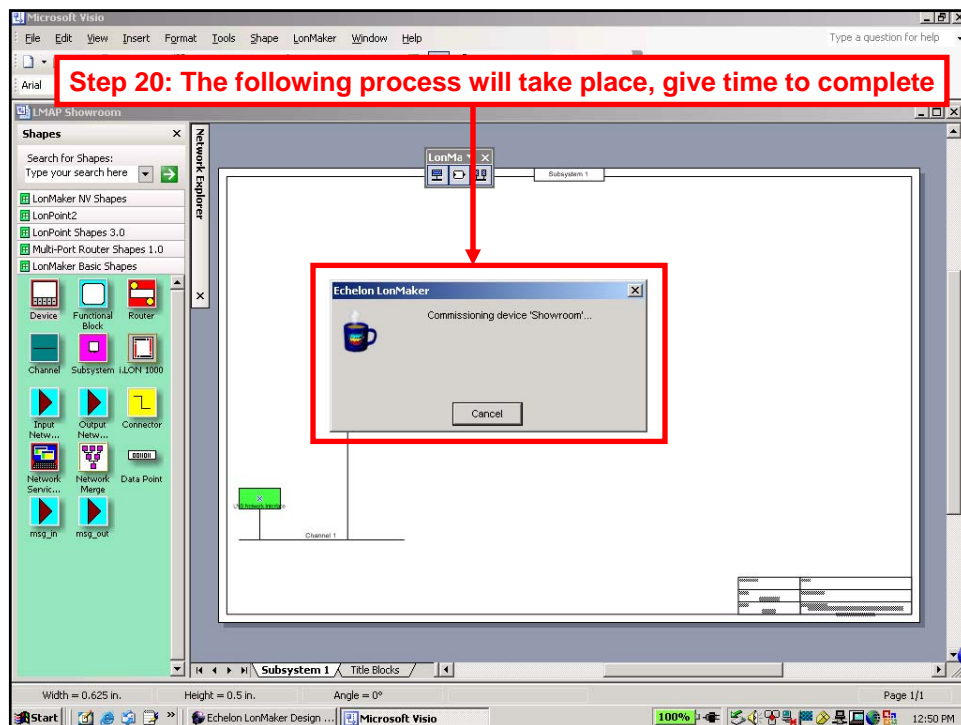
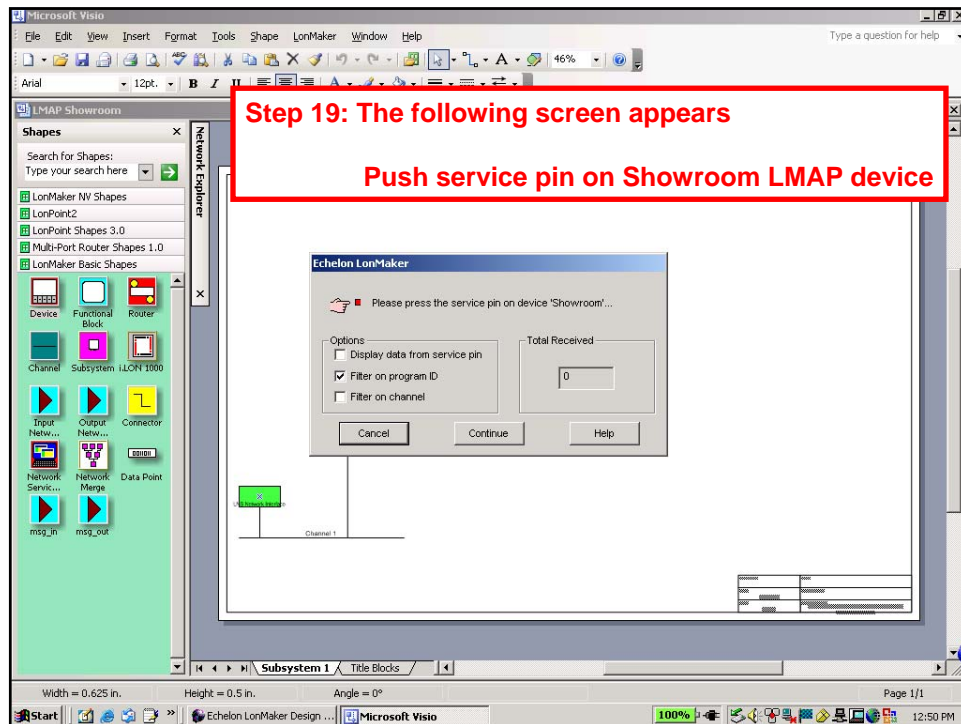


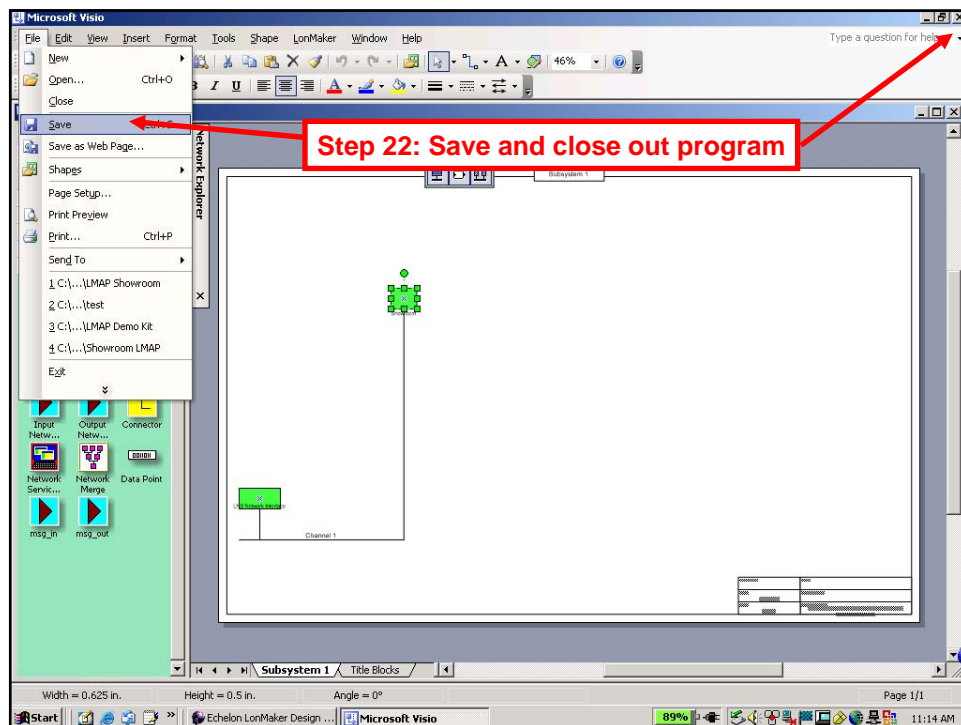
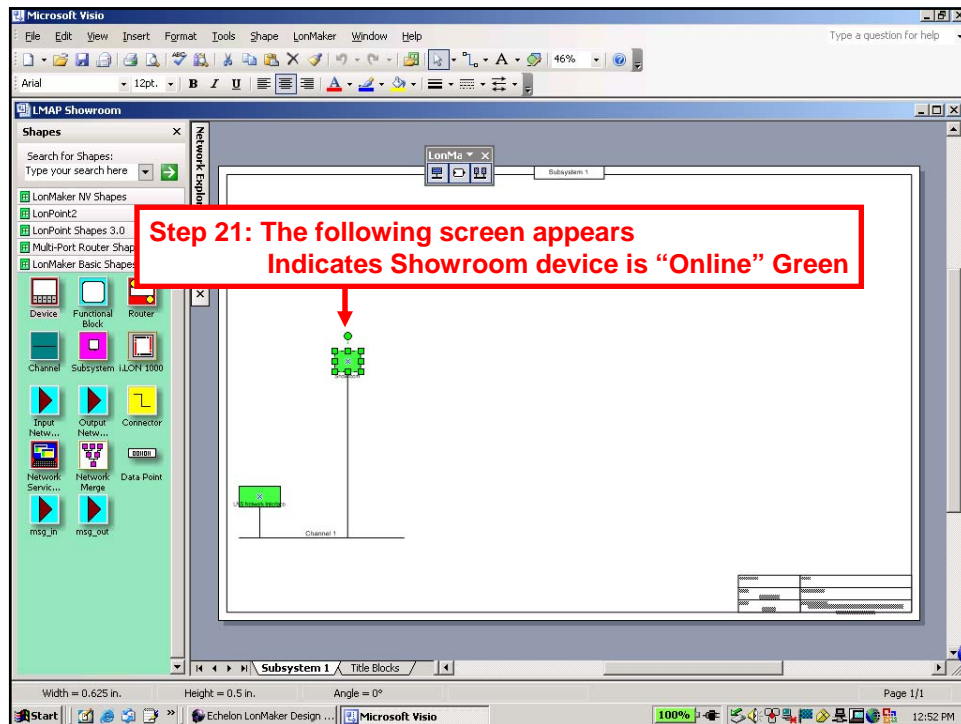


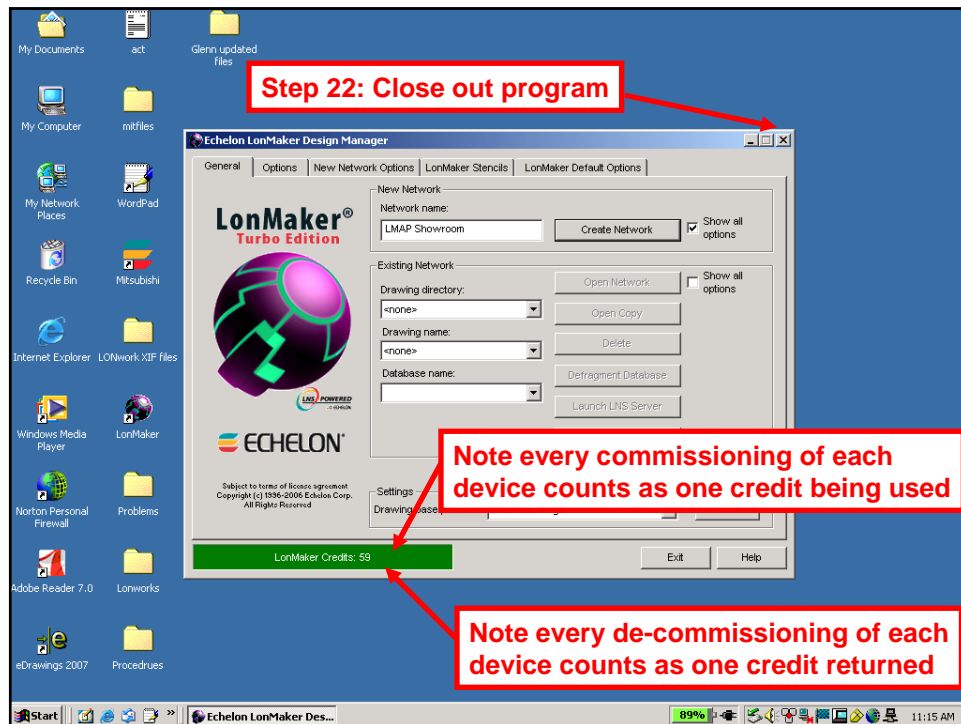








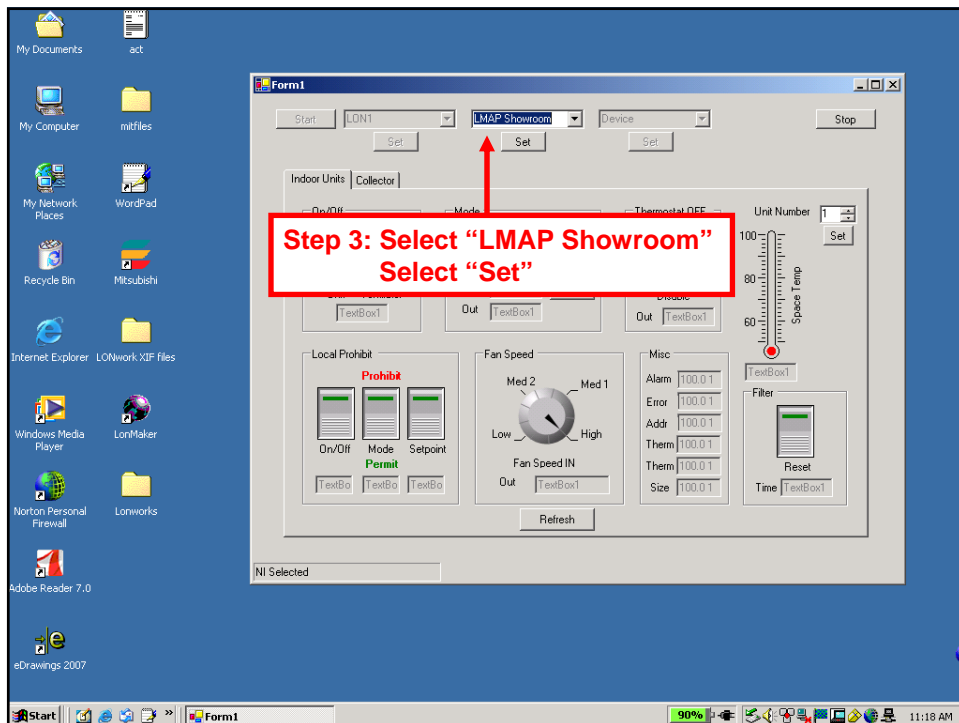
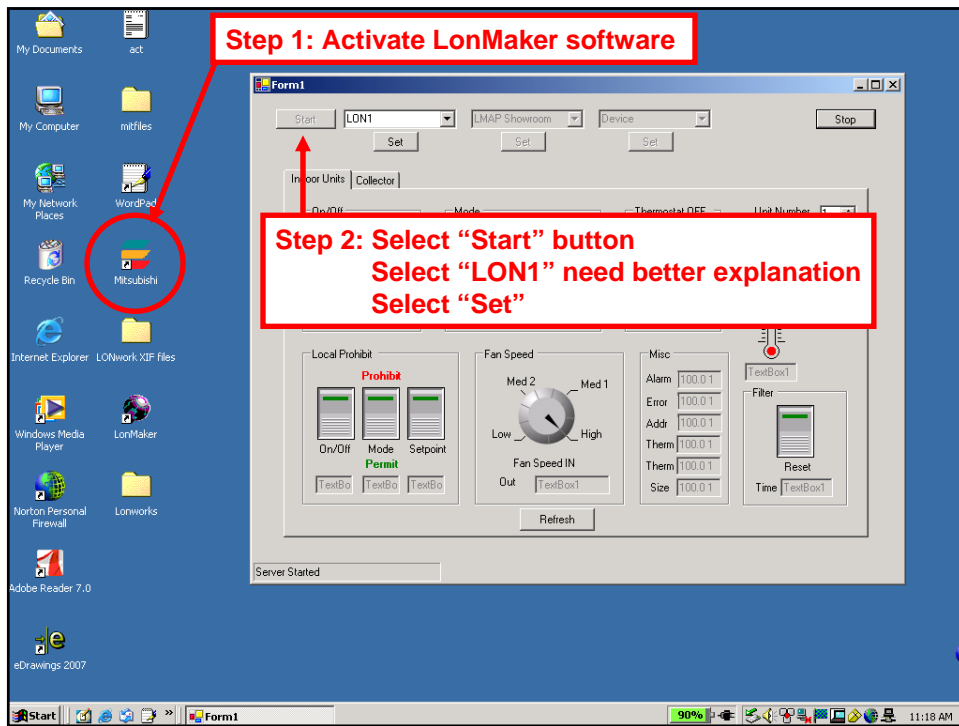


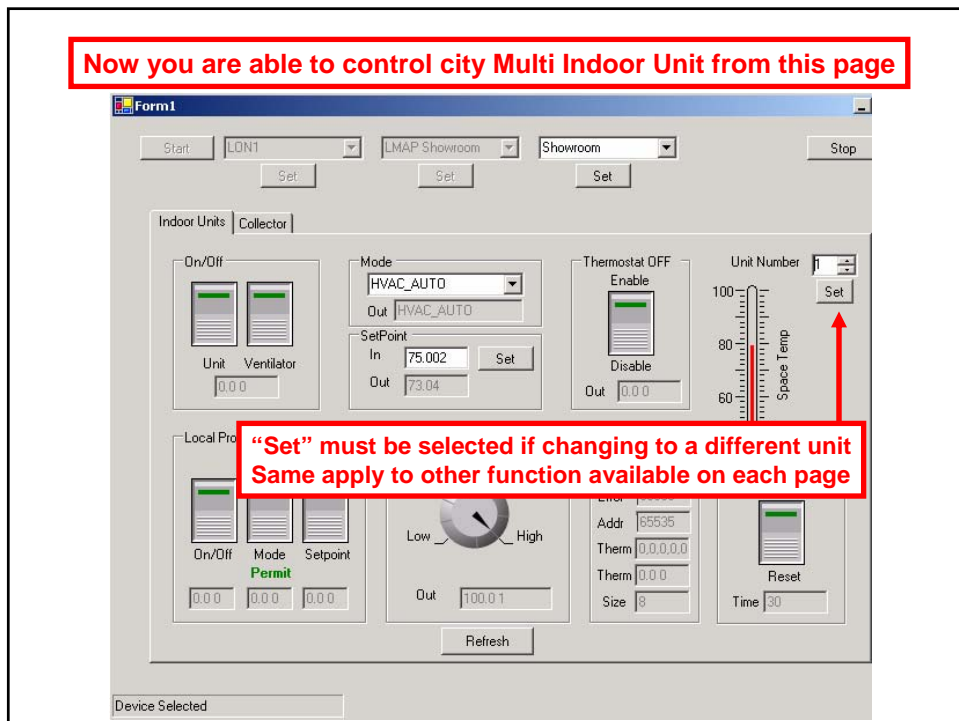
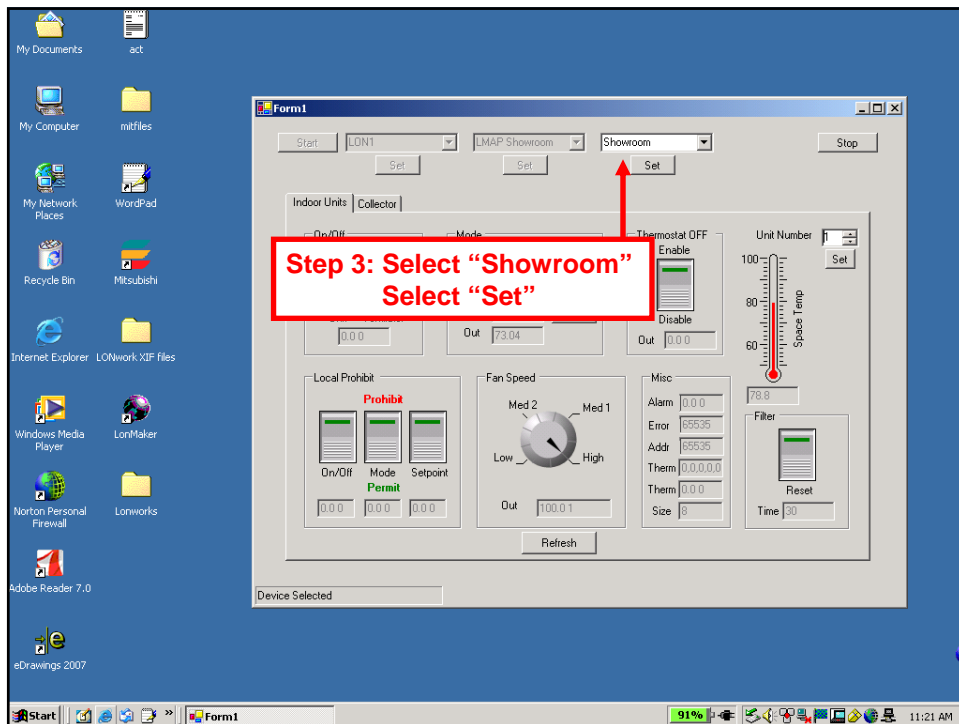


Lonworks Interface

Software Tool

Exclusive to MESCA





Full operational functions are available at your finger tips

Form1

Start LON1 LMAP Showroom Showroom Stop

Set Set Set

Indoor Units Collector

On/Off Ventilator Unit 0.0.0

Mode HVAC_AUTO Out HVAC_AUTO

SetPoint In 75.002 Out 73.04 Set

Thermostat OFF Enable Disable Out 0.0.0

Unit Number 1 Set

Local Prohibit Prohibit On/Off Mode Setpoint 0.0.0 0.0.0 0.0.0

Fan Speed Med 2 Med 1 Low High Out 100.0.1

Misc Alarm 0.0.0 Error 65535 Addr 65535 Therm 0.0.0.0.0 Therm 0.0.0 Size 8

Filter Reset Time 30

Refresh

Device Selected