



Changes for the Better

SPLIT-TYPE, HEAT PUMP AIR CONDITIONERS  
SPLIT-TYPE, AIR CONDITIONERS

December 2010

No. OCB483

# PARTS CATALOG

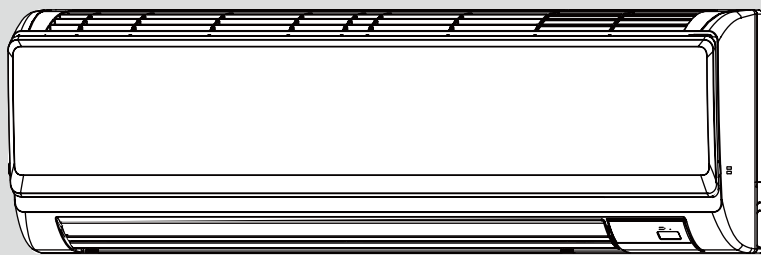
**Series PKA Wall Mounted**

**R410A**

Indoor unit  
[Model names] [Service Ref.]

PKA-A12HA4	<b>PKA-A12HA4</b>
PKA-A18HA4	<b>PKA-A18HA4</b>

NOTE:  
• RoHS compliant products have <G> mark on the spec name plate.

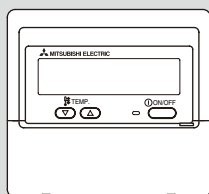


INDOOR UNIT

## CONTENTS

1. RoHS PARTS LIST ..... 2

**SERVICE MANUAL (OCH483)**



WIRED REMOTE CONTROLLER  
(Option)

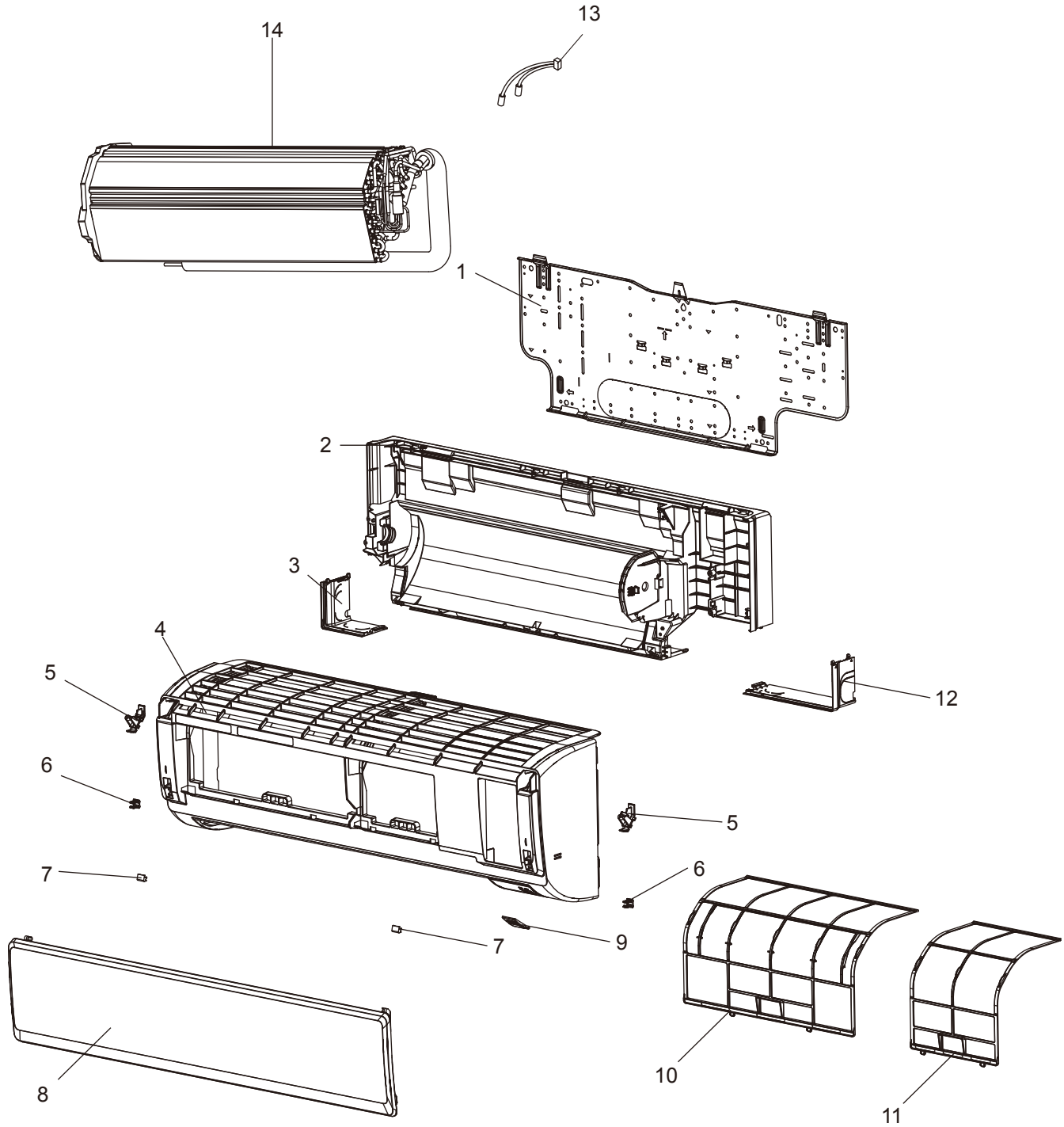


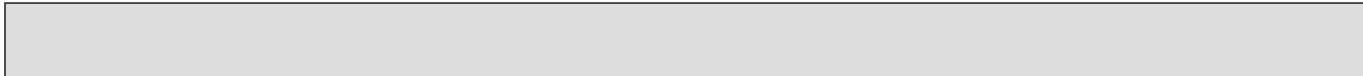
IR WIRELESS REMOTE CONTROLLER (Option)



Mr. SLIM™

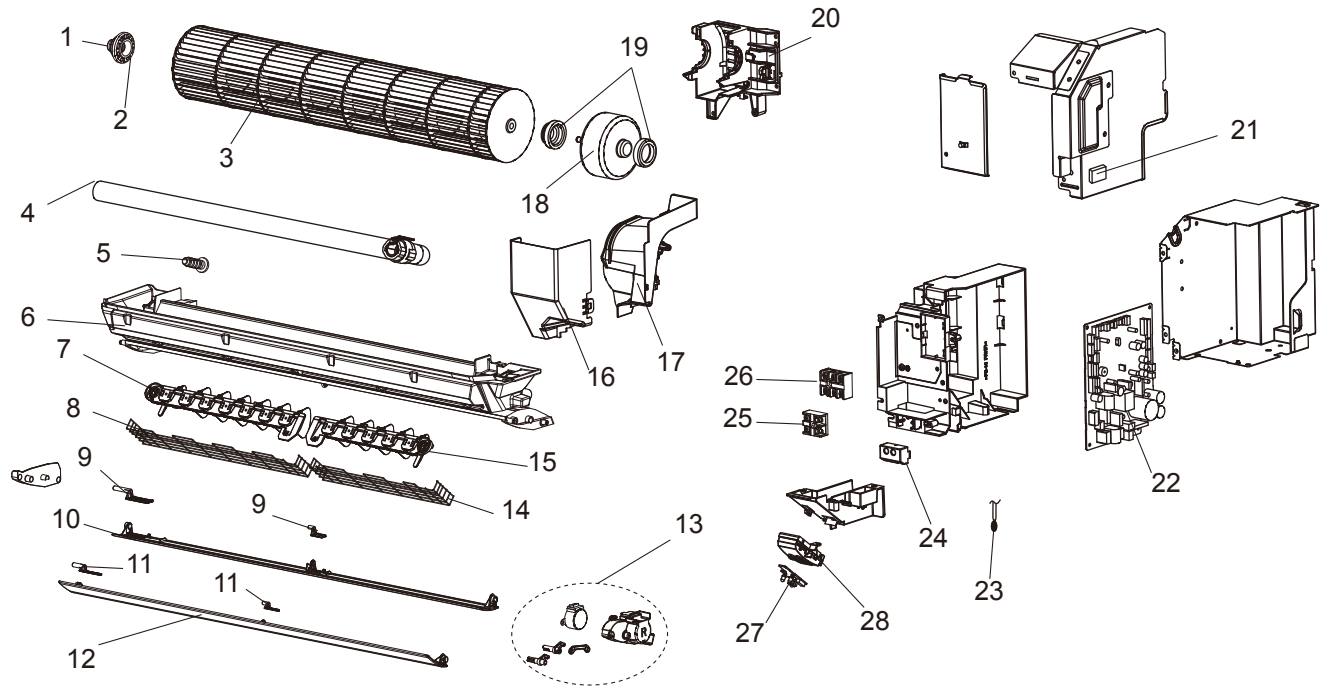
PANEL AND HEAT EXCHANGER PARTS  
 PKA-A12HA4 PKA-A18HA4





No.	RoHS	Part No.	Part Name	Specification	Q'ty/set	Remarks (Drawing No.)	Wiring Diagram Symbol	Recom- mended Q'ty
					PKA-A·HA4			
					12/18			
1	G	R01 E08 808	BACK PLATE		1			
2	G	R01 E02 635	BOX ASSY		1			
3	G	R01 E30 658	CORNER BOX (L)		1			
4	G	R01 E16 651	FRONT PANEL		1			
5	G	R01 E14 054	HOLDER (R.L)		1	2pcs/set		
6	G	R01 E15 054	CATCH		1	2pcs/set		
7	G	R01 E05 096	SCREW CAP		1	2pcs/set		
8	G	R01 E58 691	GRILLE		1			
9	G	R01 E31 658	RECEIVER COVER		1			
10	G	R01 E27 500	FILTER		1			
11	G	R01 E28 500	FILTER		1			
12	G	R01 E29 658	CORNER BOX (R)		1			
13	G	R01 N17 202	THERMISTOR		1		TH2/5	
14	G	T7W N09 480	HEAT EXCHANGER		1			

# FAN AND ELECTRICAL PARTS PKA-A12HA4 PKA-A18HA4



Part numbers that are circled are not shown in the illustration.

No.	RoHS	Part No.	Part Name	Specification	Q'ty/set		Remarks (Drawing No.)	Wiring Diagram Symbol	Recom- mended Q'ty
					PKA-A-HA4				
					12/18				
1	G	R01 E01 102	BEARING MOUNT		1				
2	G	R01 E04 103	SLEEVE BEARING		1				
3	G	R01 E42 114	LINEFLOW FAN		1				
4	G	R01 E09 527	DRAIN HOSE		1				
5	G	R01 E03 524	DRAIN CAP		1				
6	G	T7W E03 530	NOZZLE ASSY		1	with No.7,15			
7	G	R01 E09 038	GUIDE VANE ASSY-L		1				
8	G	T7W E19 675	FAN GUARD-L		1				
9	G	R01 E06 063	VANE SHAFT-UC		1	2pcs/set			
10	G	R01 E32 002	AUTO VANE-U		1				
11	G	R01 E05 063	VANE SHAFT-TC		1	2pcs/set			
12	G	R01 E31 002	AUTO VANE-T		1				
13	G	R01 E27 223	VANE MOTOR		1		M		
14	G	T7W E18 675	FAN GUARD-R		1				
15	G	R01 E08 038	GUIDE VANE ASSY-R		1				
16	G	R01 E00 031	WATER COVER		1				
17	G	R01 E03 126	MOTOR BAND		1				
18	G	R01 E51 220	FAN MOTOR		1	with No.19	MS		
19	G	R01 E18 105	RUBBER MOUNT		1				
20	G	R01 E44 130	MOTOR BED		1				
21	G	R01 E01 091	THERMISTOR HOLDER		1				
22	G	T7W E98 310	CONTROLLER BOARD		1		I.B, S.W		
23	G	R01 N23 202	THERMISTOR		1		TH1		
24	G	R01 E01 031	SWITCH BOARD COVER		1				
25	G	R01 E48 246	TERMINAL BLOCK	2P (1, 2)	1		TB5		
26	G	R01 T04 246	TERMINAL BLOCK	3P(S1, S2, S3)	1		TB4		
27	G	R01 E10 317	RECEIVER ASSY		1		W.B		
28	G	R01 E01 094	DISP HOLDER		1				
29	G	R01 E11 239	FUSE	3.15A 250V	1		FUSE		
30	G	R01 E12 304	CABLE (VANE MOTOR)		1				

**Mr. SLIM™**

 **mitsubishi electric corporation**  
HEAD OFFICE : TOKYO BLDG., 2-7-3, MARUNOUCHI, CHIYODA-KU TOKYO 100-8310, JAPAN