

Job Name:

Schedule Reference:

Date:



PWFY-P36NMU-E-BU

GENERAL FEATURES

- Dual set point functionality (*1)
- Hydronic heat exchanger transfers energy from refrigerant to water
- Can be used to transfer waste heat from cooling operation to water, resulting in large energy savings
- Generates non-potable water up to 160°F for use in a variety of applications
- Applications include radiant heating, hot water preheating, melting snow, reheating air, warming pools, and more
- Includes R134A compressor circuit for boosting water temperature
- Connectable with CITY MULTI R2, H2i R2 and WR2 systems
- Y-strainer included

SPECIFICATIONS:

Capacity*

Heating	Btu/h	39,900
---------	-------	--------

*Cooling | Outdoor: 95°F (35°C) DB
Inlet Water Temperature: 74°F (23°C)
Water Flow Rate: 9.25 GPM

R2-Series:

Heating | Outdoor: 47°F (8°C) DB / 43°F (6°C) WB
Inlet Water Temperature: 149°F (65°C)
Water Flow Rate: 9.4 GPM

WR2-Series:

Circulating Water Temperature: 70°F (21.1°C)
Inlet Water Temperature: 86°F (30°C)
Water Flow Rate: 9.4 GPM

* Not compatible with:

PURY/PQRY-T/YGMU or PUHY/PQHY-T/YGMU units

Note: Mitsubishi Electric (MESCA) supports the use of only MESCA supplied and approved accessories for proper functioning of the unit(s). Use of non-MESCA supported accessories will affect warranty coverage.

Electrical

Electrical Power Requirements: 1-phase, 208 / 230V, 60Hz

Minimum Circuit Ampacity (MCA): A 25

Maximum Fuse Size: A 25

* All electrical work shall comply with National (CEC) and local codes and regulations.

*1 – All components of the system must be compatible. For more details on system compatibility, please refer to Technical Bulletin 100-151 available on our website.

Notes:

Specifications are subject to change without notice.

Controllers: PAR-W21MAA

Operating Inlet Water Temperature Range

Heating: 50°F to 160°F (10°C to 71°C)

Leaving Water Temperature Range

Heating: 86°F to 160°F (30°C to 71°C)

External Finish: Galvanized-steel Sheet

External Dimensions

Height	In.(mm)	31-1/2 (800)
Width	In.(mm)	17-3/4 (450)
Depth	In.(mm)	11-13/16 (300)

Net Weight: Lbs.(kg) 131 (59)

Refriger for PWFY-P36NMU-E-BU Internal Compressor

Type	R134A	
Charge	2 lbs. 7 oz. (1.1 kg)	
Oil	NEO22	
Design Pressure	MPa (psi)	4.15 (601)

Refrigerant for CITY MULTI System

Type	R410A	
Design Pressure	MPa (psi)	4.15 (601)

Circulating Water

Operation Volume Range	GPM (L/m)	2.6-9.4 (10-36)
Design Pressure	MPa (psi)	1 (145)

Refrigerant Piping Diameter (Brazed)

Liquid (High Pressure)	In.(mm)	3/8 (9.52)
Gas (Low Pressure)	In.(mm)	5/8 (15.88)

Water Piping Dimensions

Inlet	In.(mm)	3/4 (27.2) FPT
Outlet	In.(mm)	3/4 (27.2) FPT

Drain Pipe Dimension: In.(mm) O.D. 1-1/4 (32)

Sound Data: dB(A) 44

Design notes:

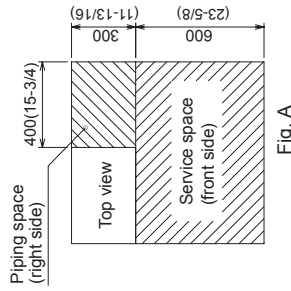
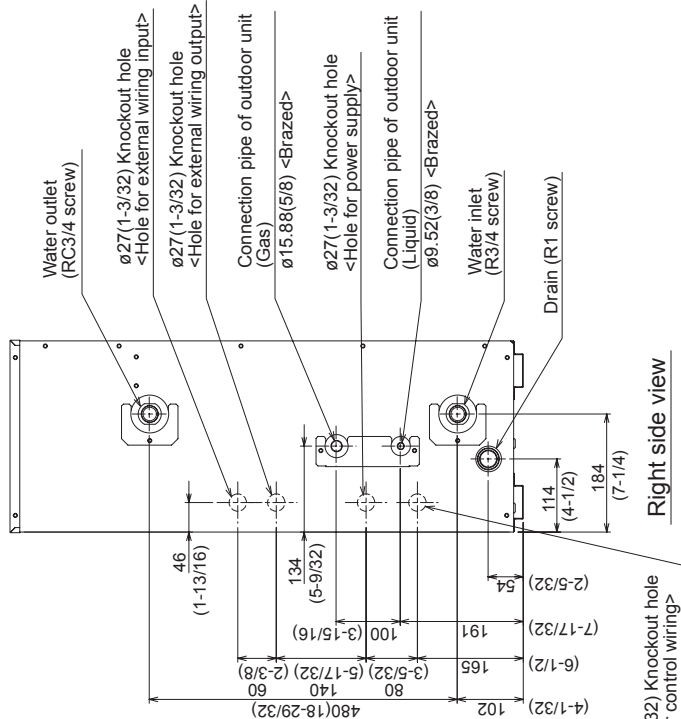
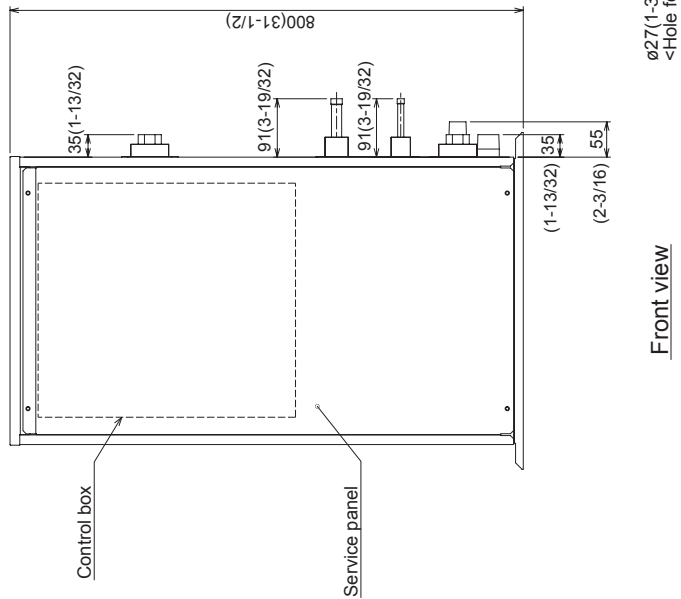
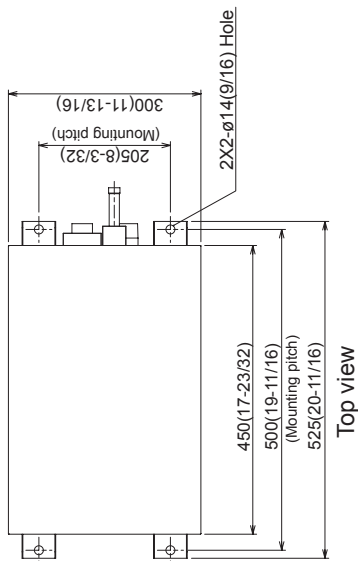
- the unit is not designed for outside installation
- please don't use the steel material for the water piping material
- always make water circulate or add the brine/glycol to the circulation water when outdoor ambient temperature becomes 0°C (32°F) or less
- always make water circulate or pull out the circulation water completely when not using it
- do not use groundwater and well water
- Install unit in an environment where the wet bulb temperature will not exceed 32°C (92°F) - the water circuit must use closed circuit - please do not use as a drinking water

*Should this document be altered or changed without MESCA's permission, it becomes null and void. MESCA assumes no responsibility for any consequences in such cases.

Model: PWFY-P36NMU-E-BU – DIMENSIONS

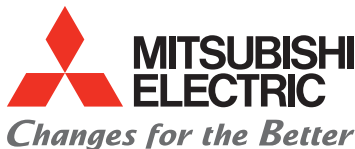
- <Accessories>
- Y-type strainer (RC3/4)1pc.
 - Heat insulation material 1pc.
 - Washer2pcs.
 - Wire1pc.

- Note 1. Ensure no rain water or debris can enter the unit through any gaps around wiring or piping.
2. Ensure adequate service space is right around the unit, according to Fig A.
3. Please always make water circulate or add the brine to the circulation water when the ambient temperature becomes 0degC(32°F) or less.
4. The unit is not designed for outside installations.
5. Install the unit in an environment where the wet bulb Temp. will not exceed 32degC(90°F).
6. Please always make water circulate or pull out the circulation water completely when not using it.
7. The water circuit must use the closed circuit.
8. Please don't use the steel material for the water piping material.
9. Connect the strainer which is put as accessory to water inlet pipe.



<Unit:mm(m)>

*Should this document be altered or changed without MESCA's permission, it becomes null and void. MESCA assumes no responsibility for any consequences in such cases.



for a greener tomorrow

