

Job Name:

Schedule Reference:

Date:



PWFY-P72NMU-E2-AU

### GENERAL FEATURES

- Dual set point functionality (\*1)
- **Heats water to 105°F (41°C)**
  - Hydronic heat exchanger transfers energy from refrigerant to water
  - Can be used to recover waste heat from cooling operation to water, resulting in large energy savings
  - Applications include radiant heating, melting snow, reheating air, preheating hot water and many other uses
- **Cools water to 50°F (10°C)**
  - Can be used for precooling outside air, cooling pool water, misting stations, process cooling, drinking water and more
- Unit is not suitable for direct potable water flow
- Connectable with CITY MULTI R2, Y, H2i, WR2 and WY systems
- Y-strainer included
- Flow switch

### SPECIFICATIONS:

Capacity*		
Cooling	Btu/h	72,000
Heating	Btu/h	79,800

\*Cooling | Outdoor: 95°F (35°C) DB  
Inlet Water Temperature: 149°F (65°C)  
Water Flow Rate: 16.9 GPM

Heating | Outdoor: 47°F (8.3°C) DB / 43°F (6.1°C) WB  
Inlet Water Temperature: 86°F (30°C)  
Water Flow Rate: 18.9 GPM

\* Not compatible with:  
PURY/PQRY-T/YGMU or PUHY/PQHY-T/YGMU units

**Note: Mitsubishi Electric (MESCA) supports the use of only MESCA supplied and approved accessories for proper functioning of the unit(s). Use of non-MESCA supported accessories will affect warranty coverage.**

Electrical		
Electrical Power Requirements	1-phase, 208 / 230V, 60Hz	
Minimum Circuit Ampacity (MCA) *	A	0.09
Maximum Fuse Size	A	15

\* All electrical work shall comply with National (CEC) and local codes and regulations.

\*1 - All components of the system must be compatible. For more details on system compatibility, please refer to Technical Bulletin 100-151 available on our website.

Notes:

Specifications are subject to change without notice.

Controllers	PAR-W21MAA
-------------	------------

Operating Inlet Water Temperature Range	
Cooling	50°F to 95°F (10°C to 35°C)
Heating	50°F to 105°F (10°C to 41°C)

Outdoor Temperature Range	
Cooling	23 to 115°F (-5 to 46°C) WR2/R2-Series 23 to 115°F (-5 to 46°C) H2i R2-Series 23 to 115°F (-5 to 46°C) WY/Y-Series 23 to 109°F (-5 to 43°C) H2i Y-Series
Heating	-4 to 90°F (-20 to 32°C) WR2/R2-Series -13 to 90°F (-25 to 32°C) H2i R2-Series -4 to 60°F (-20 to 15.5°C) WY/Y-Series -13 to 60°F (-25 to 15.5°C) H2i Y-Series

External Finish	Galvanized-steel Sheet
-----------------	------------------------

External Dimensions		
Height	In.(mm)	31-1/2 (800)
Width	In.(mm)	17-3/4 (450)
Depth	In.(mm)	11-13/16 (300)

Net Weight	Lbs.(kg)	80 (36)
------------	----------	---------

Refrigerant		
Type	R410A	
Design Pressure	MPa (psi)	4.15 (601)

Circulating Water		
Operation Volume Range	GPM (L/m)	7.9-18.9 (30-72)
Design Pressure	MPa (psi)	1 (145)

Refrigerant Piping Diameter (Brazed)		
Liquid (High Pressure)	In.(mm)	3/8 (9.52)
Gas (Low Pressure)	In.(mm)	3/4 (19.05)

Water Piping Dimensions		
Inlet	In.(mm)	PT 1 ( 34 ) Screw (PT 3/4 Screw without expansion joint)
Outlet		

Drain Pipe Dimension	In.(mm)	O.D. 1-1/4 (32)
----------------------	---------	-----------------

Sound Data	dB(A)	29
------------	-------	----

### Design notes:

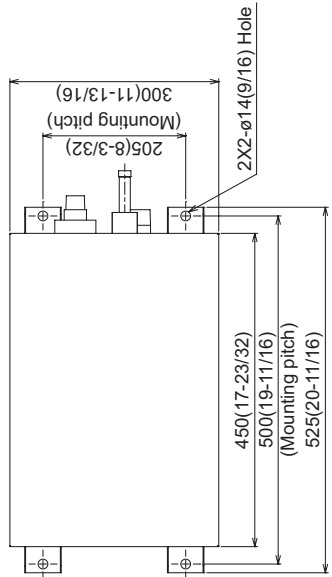
- the unit is not designed for outside installation
- please don't use the steel material for the water piping material
- always make water circulate or add the brine/glycol to the circulation water when outdoor ambient temperature becomes 0°C (32°F) or less
- always make water circulate or pull out the circulation water completely when not using it - do not use groundwater and well water
- Install unit in an environment where the wet bulb temperature will not exceed 32°C (92°F)
- the water circuit must use closed circuit - please do not use as a drinking water

\*Should this document be altered or changed without MESCA's permission, it becomes null and void. MESCA assumes no responsibility for any consequences in such cases.

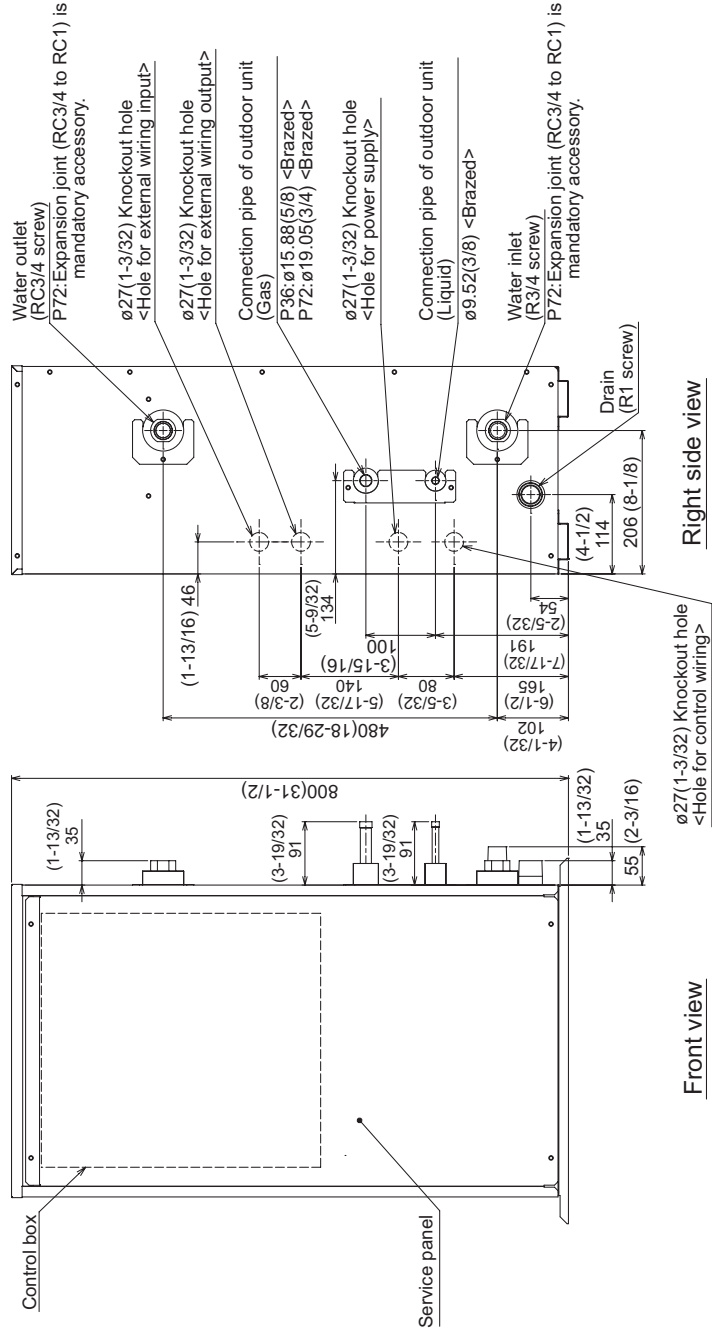
# Model: PWFY-P72NMU-E2-AU – DIMENSIONS

- <Accessories>
- Y-type strainer(RC3/4).....1pc.
  - Heat insulation material.....1pc.
  - Expansion joint(P72).....2pcs.
- [From RC3/4 to RC1]
- Flow switch.....1set
  - Washer.....2pcs.
  - Buffer material.....1pc.

- Note 1.Ensure no water or debris can enter the unit through any gaps around wiring or piping.
- 2.Ensure adequate both service and piping space, as shown in Fig A.
- 3.Please always make water circulate or add the brine to the circulation water when the ambient temperature becomes 0°C(32°F) or below.
- 4.The unit is not designed for outside installations.
- 5.Please always make water circulate or remove all circulation water completely when not in operation.
- 6.The water circuit must be the closed circuit.
- 7.Please don't use the steel material for the water piping.
- 8.Connect the strainer as accessory for unit to water inlet pipe.



Top view



Front view

Right side view

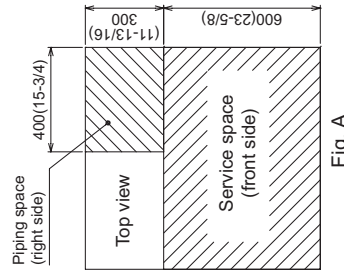
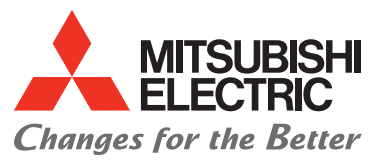


Fig. A

<Unit:mm(in)>



for a greener tomorrow



\*Should this document be altered or changed without MESCA's permission, it becomes null and void. MESCA assumes no responsibility for any consequences in such cases.