

SERVICE PARTS LIST FOR MITSUBISHI ELECTRIC REFRIGERATION SYSTEMS:HOT WATER HEAT PUMP UNIT

Series : CAHV-P•YA-HPB(-BS)

REVISED

Aug. 2012

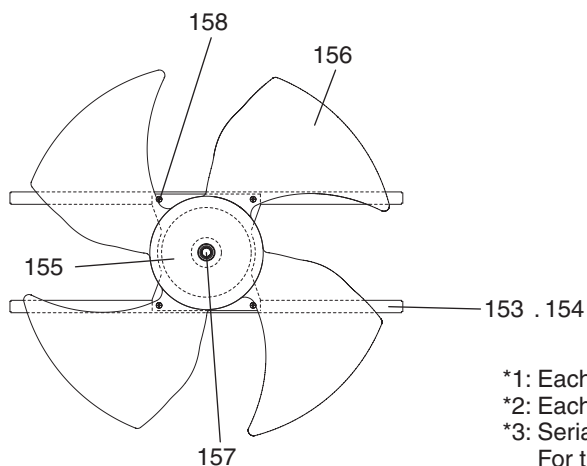
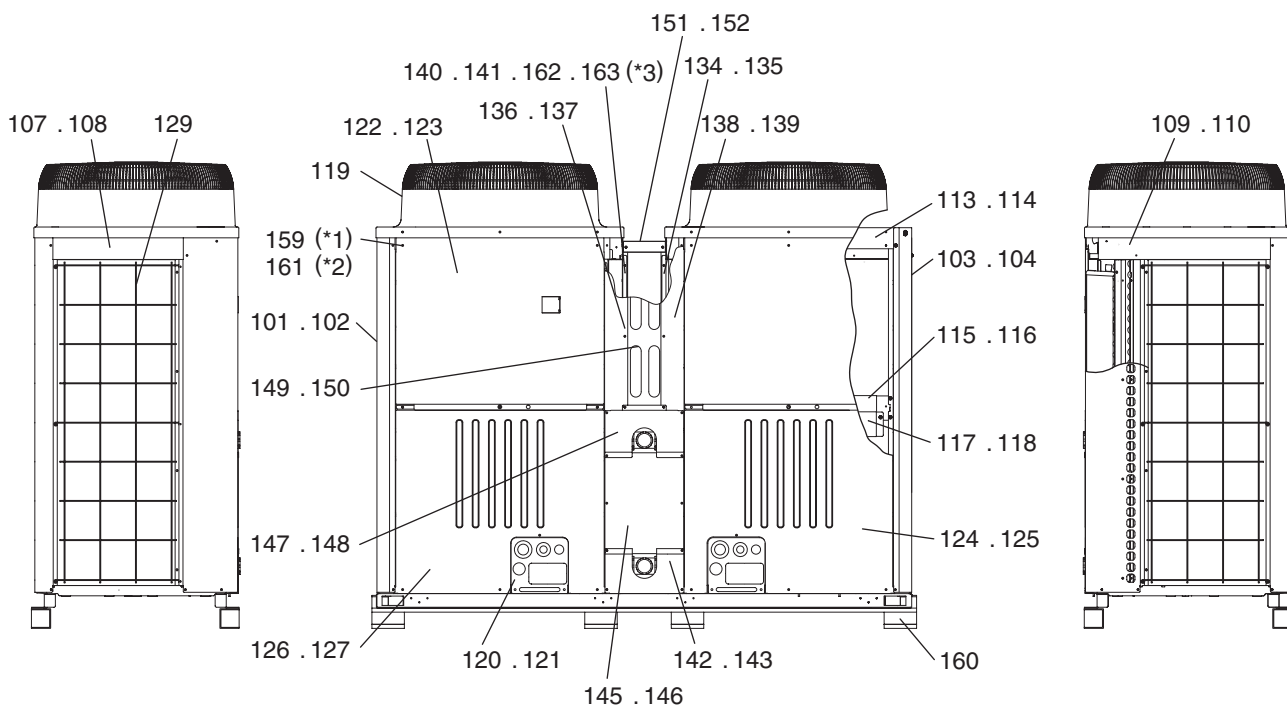
BWE1020B

INDEX
CAHV-P500YA-HPB CAHV-P500YA-HPB-BS

Part information update day : **2012/08/27**

Please change the old catalog (issued May 2012, No.BWE1020A) to this new catalog.
Content of revision : Some of parts are changed.

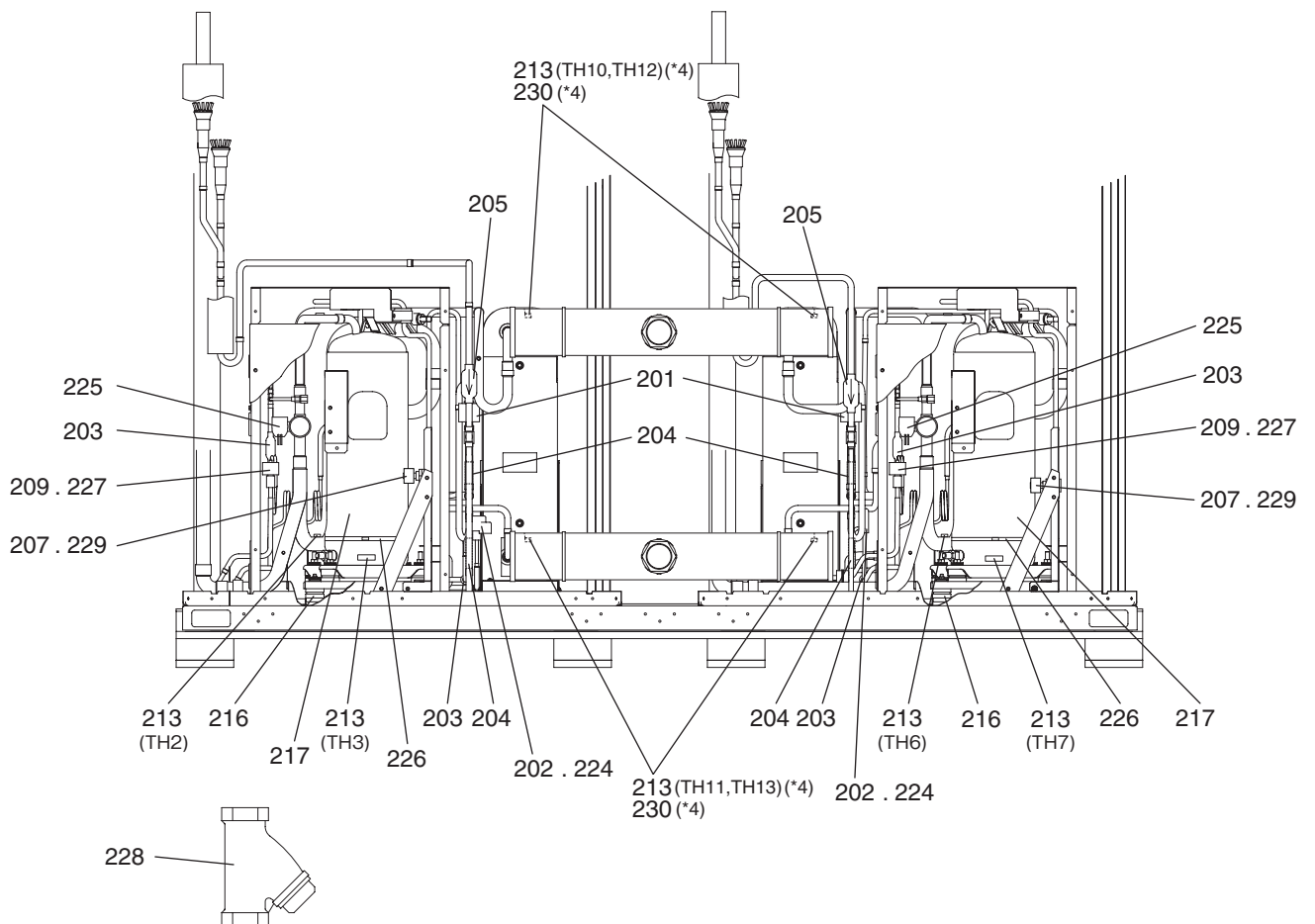
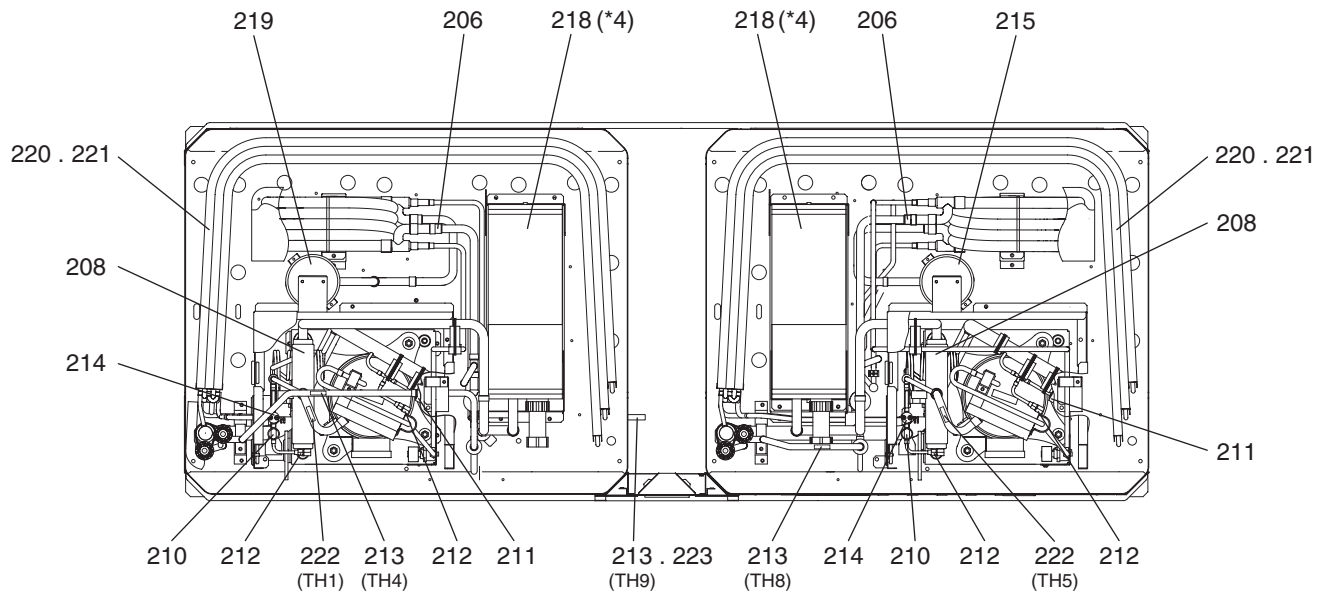




- *1: Each unit requires 126 H screws (Part No. 159).
 *2: Each unit requires 36 WFT screws (Part No. 161) .
 *3: Serial number 12*****
 For the units manufactured before Feb. 2012 (Part No. 140,141) .
 Serial number 13*****
 For the units manufactured after Mar. 2012 (Part No. 162,163) .

No.	Part No.	G : RoHS Apply Only W : RoHS Apply by Running Change		Spec.	CAHV-P500YA-HPB	CAHV-P500YA-HPB-BS					Dwg. No.	Notes for the models	Revision info.
			Part Name										
101	R11 019 626	G	Pillar LF		1						KB02A011G07		
102	R11 020 626	G	Pillar LF	BS		1					KB02A011G08		
103	R11 014 626	G	Pillar RF		1						KB02A012G07		
104	R11 015 626	G	Pillar RF	BS		1					KB02A012G08		
105	R63 002 627	G	Pillar B		2						KB02A013G07		
106	R63 003 627	G	Pillar B	BS		2					KB02A013G08		
107	R63 038 162	G	Frame assy L		2						KD00G100G01		
108	R63 040 162	G	Frame assy L	BS		2					KD00G100G02		
109	R63 039 162	G	Frame assy R		2						KD00G101G01		
110	R63 041 162	G	Frame assy R	BS		2					KD00G101G02		
111	R63 001 216	G	Frame assy B		2						KB00C162G07		
112	R63 002 216	G	Frame assy B	BS		2					KB00C162G08		
113	R63 004 668	G	Frame F		2						KB02J208H01		
114	R63 005 668	G	Frame FB	BS		2					KB02J208G02		
115	R63 013 111	G	Frame assy MU		2						KB00C887G01		
116	R63 014 162	G	Frame assy MU	BS		2					KB00C887G07		
117	R12 024 215	G	Frame assy MB		2						KC00G639G01		Chg.
118	R12 026 215	G	Frame assy MB	BS		2					KC00G639G03		Chg.
119	R63 4H6 118	G	Fan guard		2	2					KB25A008H07		
120	R61 095 690	G	Cover piping	R2	2						KB02L001G07		
121	R61 094 690	G	Cover piping	R2 BS		2					KB02L001G08		
122	R12 007 669	G	Panel assy FU		2						KN00G568G07		
123	R12 040 661	G	Panel assy FU	BS		2					KN00G568G08		
124	R61 003 652	G	Panel assy FB		1						KB02B392H02		
125	R61 004 652	G	Panel assy FB	BS		1					KB02B392G03		
126	R61 157 651	G	Panel assy FBL		1						KB02J308H01		
127	R61 162 651	G	Panel assy FBL	BS		1					KB02J308G01		
128	R63 004 611	G	Fin guard B		2	2					KB07T208G01		
129	R61 007 611	G	Fin guard LR		2	2					KB07C043G03		
130	R12 001 626	G	Pillar B(R)		1						KC02B363G05		
131	R12 013 626	G	Pillar B(R)	BS		1					KC02B363G06		
132	R12 002 626	G	Pillar B(L)		1						KC02B363G07		
133	R12 012 626	G	Pillar B(L)	BS		1					KC02B363G08		
134	R12 003 626	G	Pillar RF		1						KC02B338G09		
135	R12 007 626	G	Pillar RF	BS		1					KC02B338G10		
136	R12 004 626	G	Pillar F(L)		1						KC02B337G13		
137	R12 008 626	G	Pillar F(L)	BS		1					KC02B337G14		
138	R12 005 626	G	Pillar F(R)		1						KC02B337G15		
139	R12 009 626	G	Pillar F(R)	BS		1					KC02B337G16		
140	R12 006 626	G	Pillar LF		1						KC02B338G11	For the units manufactured before Feb. 2012.	
141	R12 010 626	G	Pillar LF	BS		1					KC02B338G12	For the units manufactured before Feb. 2012.	
142	R12 008 669	G	Panel B		1						KC02G149G01		
143	R12 011 626	G	Panel B	BS		1					KC02G149G02		
144	R63 L59 060	G	Guard fixed plate		2	2					W893727H03		
145	R12 009 669	G	Panel M		1						KC02G150G05		

[illegible]

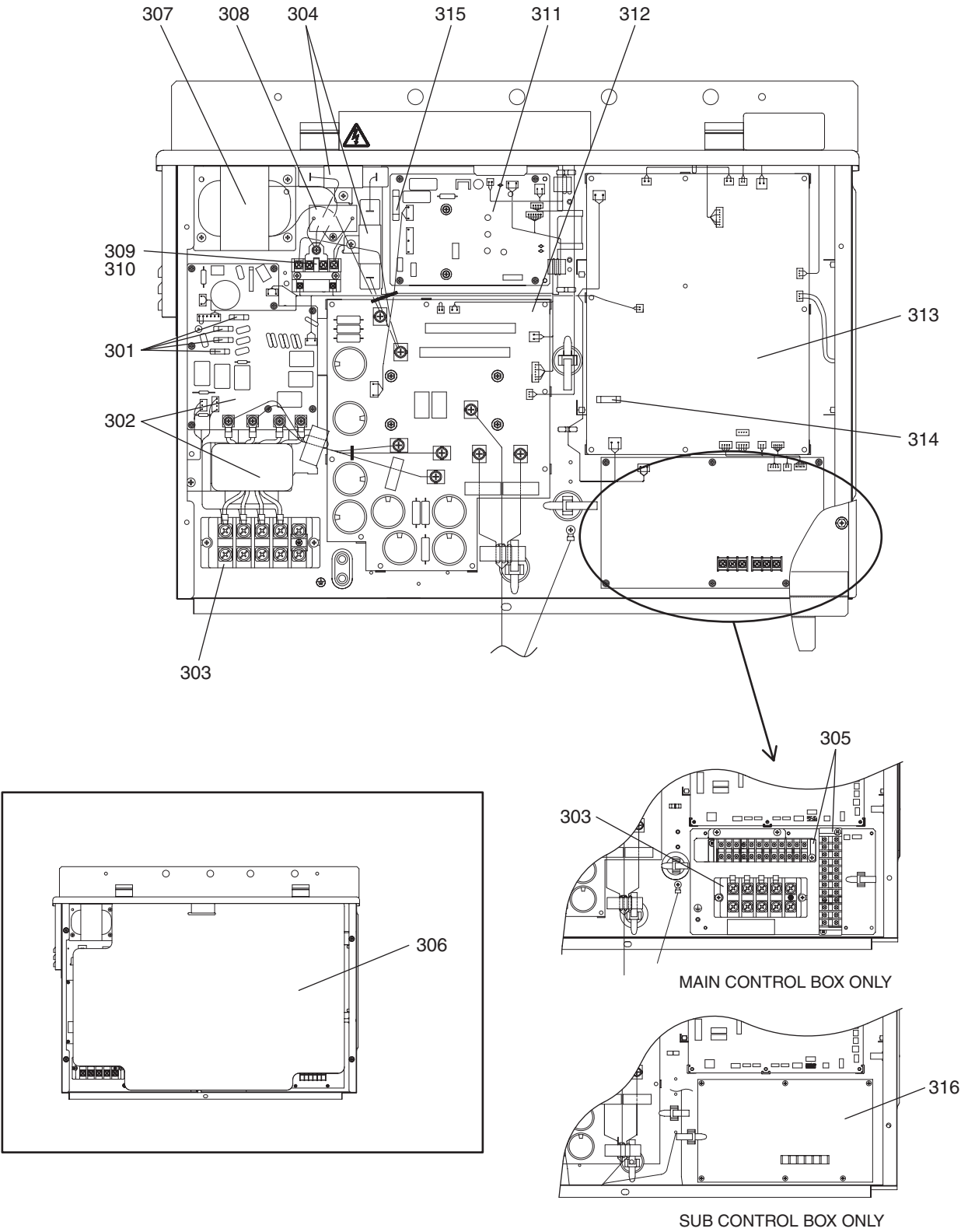


*4: When part 213 (TH10 through TH13) or part 218 is replaced, replace part 230 as well.

CAHV-P500YA-HPB
CAHV-P500YA-HPB-BS

FUNCTIONAL PARTS

[illegible]



CAHV-P500YA-HPB
CAHV-P500YA-HPB-BS

CONTROL BOX PARTS

[illegible]

mitsubishi electric corporation
HEAD OFFICE: TOKYO BLDG., 2-7-3, MARUNOUCHI, CHIYODA-KU, TOKYO 100-8310, JAPAN

BWE1020B (20120831)