

SPLIT-TYPE AIR CONDITIONERS

OUTDOOR UNIT

Revision D:

- Inverter P.C. board, terminal block, outdoor heat exchanger, reactor, condenser net and motor support for MUZ-FE18NA have been changed.

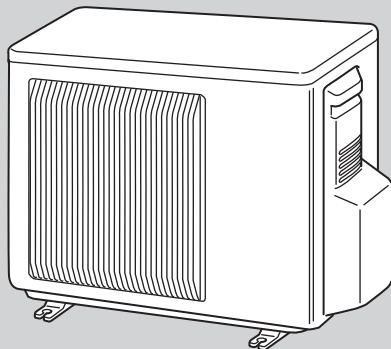
Please void OBB543 REVISED EDITION-C.

No. OBB543
REVISED EDITION-D

PARTS CATALOG

Models

- MUZ-FE09NA
- MUZ-FE09NA - 1
- MUZ-FE09NAH
- MUZ-FE12NA
- MUZ-FE12NA1
- MUZ-FE12NAH
- MUZ-FE18NA



- MUZ-FE09NA MUZ-FE09NAH
- MUZ-FE12NA MUZ-FE12NAH
- MUZ-FE09NA - 1
- MUZ-FE12NA1

CONTENTS

- 1. RoHS PARTS LIST..... 2
- 2. OPTIONAL PARTS..... 8

SERVICE MANUAL (OBH543)

NOTE:
RoHS compliant products have <G> mark on the spec name plate.



Revision A:

• MUZ-FE18NA has been added.

Revision B:

• MUZ-FE09NA -  and MUZ-FE12NA1 have been added.

Revision C:

• MUZ-FE09NAH and MUZ-FE12NAH have been added.

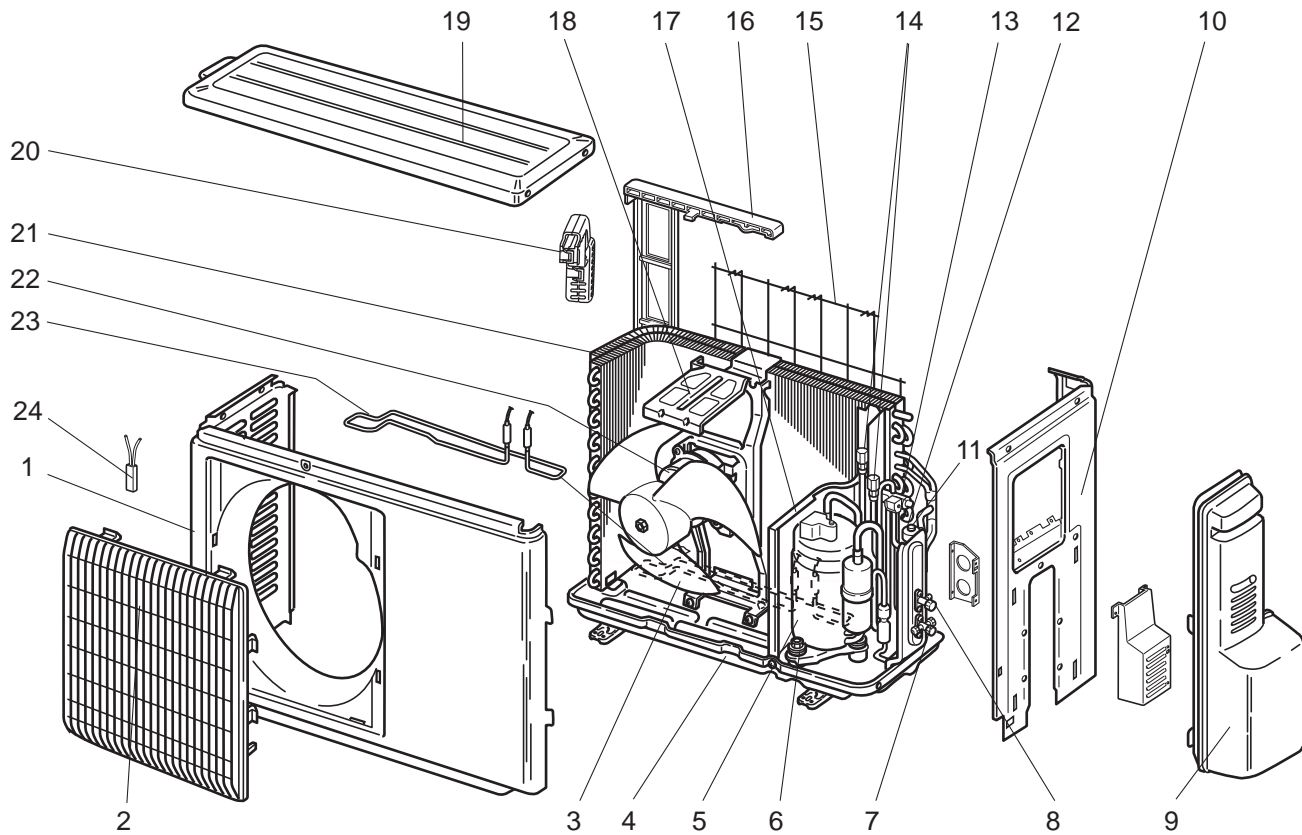
Revision D:

• Inverter P.C. board, terminal block, outdoor heat exchanger, reactor, condenser net and motor support for MUZ-FE18NA have been changed.

1

RoHS PARTS LIST

MUZ-FE09NA MUZ-FE09NAH MUZ-FE12NA MUZ-FE12NA1 MUZ-FE12NAH
1-1. OUTDOOR UNIT STRUCTURAL PARTS AND FUNCTIONAL PARTS



RoHS PARTS LIST

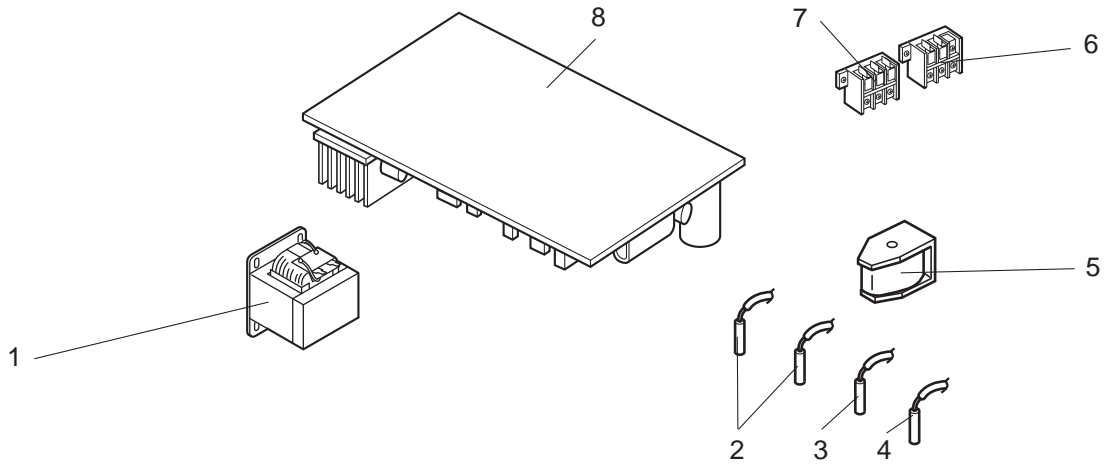
1-1. OUTDOOR UNIT STRUCTURAL PARTS AND FUNCTIONAL PARTS

Part numbers that are circled are not shown in the illustration.

No.	ROHS	Part No.	Part name	Symbol in Wiring Diagram	Q'ty/unit						Remarks
					MUZ-FE09NA	MUZ-FE09NA - 1	MUZ-FE09NAH	MUZ-FE12NA	MUZ-FE12NA1	MUZ-FE12NAH	
1	G	E12 927 232	CABINET		1	1	1	1	1	1	
2	G	E12 927 521	GRILLE		1	1	1	1	1	1	
3	G	E12 927 501	PROPELLER		1	1	1	1	1	1	
4	G	E12 A82 290	BASE		1	1		1	1		
	G	E12 G68 290	BASE				1			1	
5	G	E12 C85 900	COMPRESSOR	MC	1			1			SNB130FQAH
	G	E12 G73 900	COMPRESSOR	MC		1	1		1	1	SNB130FQBHT
6	G	E12 C34 506	COMPRESSOR RUBBER SET		3	3	3	3	3	3	3RUBBERS/SET
7	G	E12 A54 661	STOP VALVE (GAS) (ø9.52)		1	1	1	1	1	1	ø3/8
8	G	E12 927 662	STOP VALVE (LIQUID) (ø6.35)		1	1	1	1	1	1	ø1/4
9	G	E12 A49 245	SERVICE PANEL		1	1	1	1	1	1	
10	G	E12 A54 233	BACK PANEL		1	1		1	1		
	G	E12 E79 233	BACK PANEL				1			1	
11	G	E12 A54 640	EXPANSION VALVE	LEV	1	1	1	1	1	1	
12	G	E12 927 493	EXPANSION VALVE COIL	LEV	1	1	1	1	1	1	
13	G	E12 A54 961	4-WAY VALVE		1	1	1	1	1	1	
14	G	E12 A49 641	SERVICE PORT		2	2	2	2	2	2	1PC/SET
15	G	E12 930 525	CONDENSER WIRE NET		1	1	1	1	1	1	
16	G	E12 930 523	CONDENSER NET		1	1	1	1	1	1	
17	G	E12 C34 293	SEPARATOR		1	1		1	1		
	G	E12 C36 293	SEPARATOR				1			1	
18	G	E12 929 515	MOTOR SUPPORT		1	1	1	1	1	1	
19	G	E12 927 297	TOP PANEL		1	1	1	1	1	1	
20	G	E12 D84 079	THERMO HOLDER		1	1	1	1	1	1	
21	G	E12 C85 630	OUTDOOR HEAT EXCHANGER		1	1	1	1	1	1	
22	G	E12 C34 301	OUTDOOR FAN MOTOR	MF	1	1	1	1	1	1	RC0J50-□ □
23	G	E12 C36 526	DEFROST HEATER	H			1			1	
24	G	E12 C36 381	HEATER PROTECTOR	26H			1			1	
②5	G	E12 927 937	CAPILLARY TUBE (ø3.0 x ø2.0 x 240)		1	1	1	1	1	1	O.D. 0.118 x I.D. 0.079 x 9-7/16
②6	G	E12 735 936	CAPILLARY TUBE (ø3.0 x ø1.8 x 600)		2	2	2	2	2	2	O.D. 0.118 x I.D. 0.071 x 23-5/8

RoHS PARTS LIST

MUZ-FE09NA MUZ-FE09NAH MUZ-FE12NA MUZ-FE12NA1 MUZ-FE12NAH
1-2. OUTDOOR UNIT ELECTRICAL PARTS



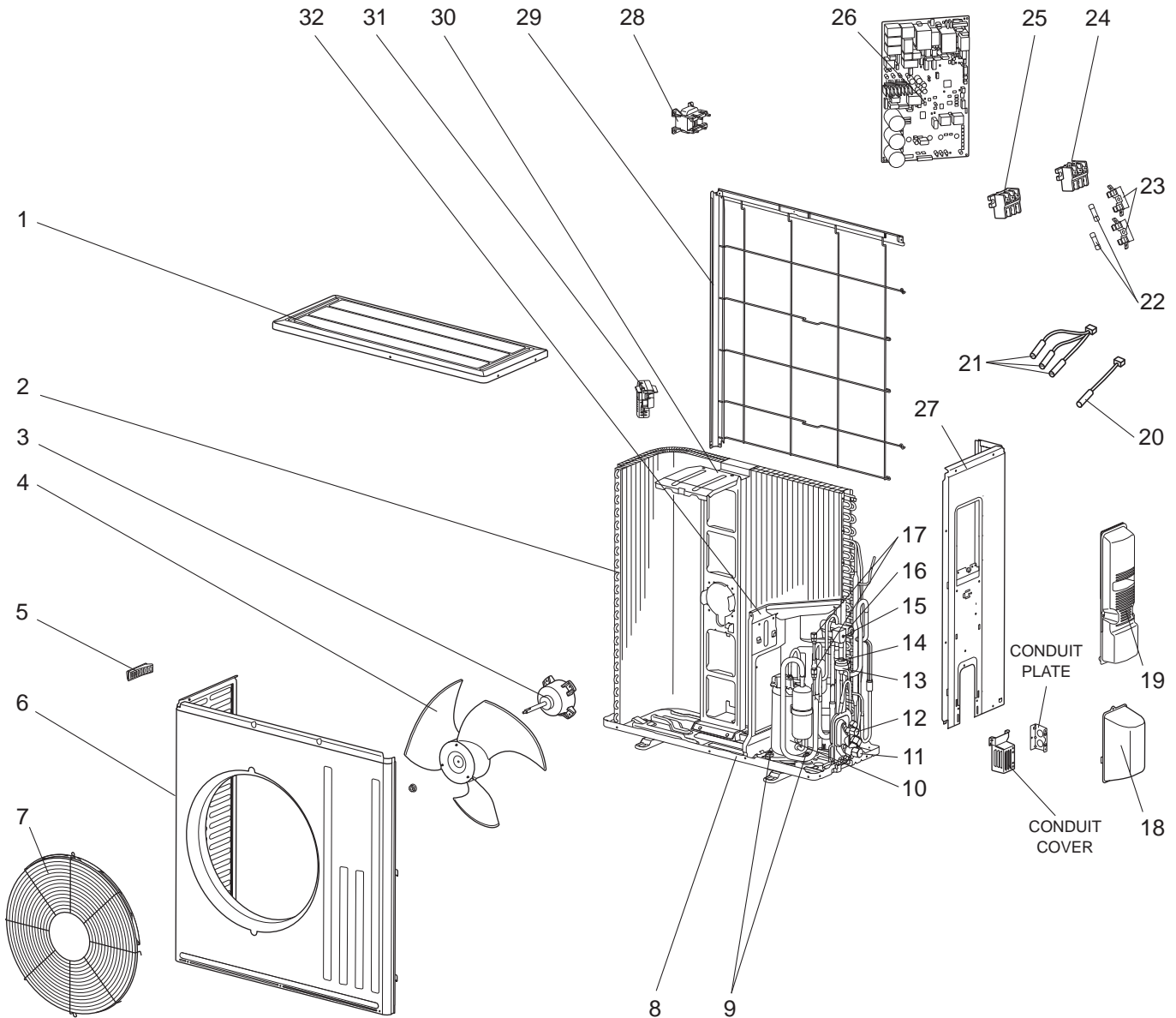
RoHS PARTS LIST

1-2. OUTDOOR UNIT ELECTRICAL PARTS

No.	RoHS	Part No.	Part name	Symbol in Wiring Diagram	Q'ty/unit						Remarks
					MUZ-FE09NA	MUZ-FE09NA-1	MUZ-FE09NAH	MUZ-FE12NA	MUZ-FE12NA1	MUZ-FE12NAH	
1	G	E12 838 337	REACTOR	L61	1	1	1	1	1	1	
2	G	E12 C34 306	THERMISTOR SET	RT61,RT62	1	1	1	1	1	1	DEFROST, DISCHARGE
3	G	E12 D65 308	AMBIENT TEMPERATURE THERMISTOR	RT65	1	1	1	1	1	1	
4	G	E12 C34 307	OUTDOOR HEAT EXCHANGER TEMPERATURE THERMISTOR	RT68	1	1	1	1	1	1	
5	G	E12 C85 490	R.V. COIL	21S4	1	1	1	1	1	1	
6	G	E12 A53 374	TERMINAL BLOCK	TB1	1	1	1	1	1	1	2P
7	G	E12 927 374	TERMINAL BLOCK	TB2	1	1	1	1	1	1	3P
8	G	E12 F26 451	INVERTER P.C. BOARD		1						Including heat sink and RT64
	G	E12 G77 451	INVERTER P.C. BOARD			1					
	G	E12 H97 451	INVERTER P.C. BOARD				1				
	G	E12 F27 451	INVERTER P.C. BOARD					1			
	G	E12 G78 451	INVERTER P.C. BOARD						1		
	G	E12 H98 451	INVERTER P.C. BOARD							1	

RoHS PARTS LIST

1-3. OUTDOOR UNIT STRUCTURAL PARTS, ELECTRICAL PARTS AND FUNCTIONAL PARTS MUZ-FE18NA



RoHS PARTS LIST

1-3. OUTDOOR UNIT STRUCTURAL PARTS, ELECTRICAL PARTS AND FUNCTIONAL PARTS

Part number that is circled is not shown in the illustration.

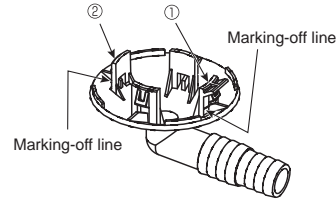
No.	RoHS	Part No.	Part Name	Symbol in Wiring Diagram	Q'ty/unit	Remarks
					MUZ-FE18NA	
1	G	E12 F28 297	TOP PANEL		1	
2	G	E12 J67 630	OUTDOOR HEAT EXCHANGER		1	
3	G	E12 F76 301	OUTDOOR FAN MOTOR	MF	1	RC0J77-□□
4	G	E12 F28 501	PROPELLER		1	
5	G	E12 817 009	HANDLE		1	
6	G	E12 F28 232	CABINET		1	
7	G	E12 F73 521	FAN GUARD		1	Including ice guard
8	G	E12 F28 290	BASE		1	
9	G	E12 C34 506	COMPRESSOR RUBBER SET		3	3 RUBBERS/SET
10	G	E12 F76 900	COMPRESSOR	MC	1	SNB172FQKMT
11	G	E12 F76 661	STOP VALVE (GAS) (ø15.88)		1	ø5/8
12	G	E12 F29 662	STOP VALVE (LIQUID) (ø9.52)		1	ø3/8
13	G	E12 F28 493	EXPANSION VALVE COIL	LEV	1	
14	G	E12 853 640	EXPANSION VALVE		1	
15	G	E12 F76 490	R.V. COIL	21S4	1	
16	G	E12 A56 961	4-WAY VALVE		1	
17	G	E12 E79 641	SERVICE PORT		2	
18	G	E12 F28 650	VALVE COVER		1	
19	G	E12 F28 245	SERVICE PANEL		1	
20	G	E12 F76 309	AMBIENT TEMPERATURE THERMISTOR	RT65	1	
21	G	E12 F28 308	THERMISTOR SET	RT61,RT62, RT68	1	DEFROST, DISCHARGE, OUTDOOR HEAT EXCHANGER TEMPERATURE
22	G	E17 250 382	FUSE	F65, F66	2	T6.3AL250V
23	G	E17 001 241	FUSE HOLDER		2	
24	G	E12 L87 374	TERMINAL BLOCK	TB1	1	3 P
25	G	E12 F28 374	TERMINAL BLOCK	TB2	1	3 P
26	G	E12 P65 451	INVERTER P.C. BOARD		1	Including heat sink and RT64
27	G	E12 F76 233	BACK PANEL (OUT)		1	
28	G	E12 F28 337	REACTOR	L	1	
29	G	E12 L87 523	CONDENSER NET		1	
30	G	E12 J52 515	MOTOR SUPPORT		1	
31	G	E12 F76 079	THERMO HOLDER		1	
32	G	E12 F76 293	SEPARATOR		1	
③③	G	E12 527 936	CAPILLARY TUBE (ø4.0 x ø2.4 x 100)		1	O.D. 0.157 x I.D. 0.094 x 3-15/16

2

OPTIONAL PARTS

2-1. DRAIN SOCKET

Model	Parts No.
MUZ-FE09NA MUZ-FE09NA - ① MUZ-FE12NA MUZ-FE12NA1	MAC-860DS

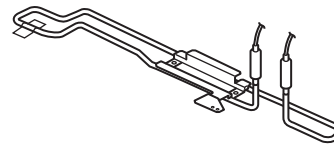


Installing a Drain Socket

For $\varnothing 1\text{-}5/8$ ($\varnothing 42$) hole
Put the tab ① in the hole first,
and then the tab ②.

2-2. DEFROST HEATER

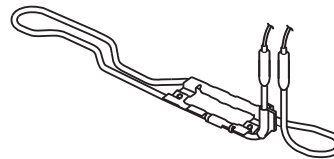
Model	Parts No.
MUZ-FE09NA MUZ-FE09NA - ① MUZ-FE12NA MUZ-FE12NA1	MAC-640BH-U



Components

① Defrost heater	1	④ Cable tie	1
② Aluminum tape	1	⑤ Self drilling screw	2
③ Heater support	1	⑥ Insulation	1

Model	Parts No.
MUZ-FE18NA	MAC-642BH-U



Components

① Defrost heater	1	④ Cable clamp	1
② Heater support	1	⑤ Self drilling screw	2
③ Cable tie	1	⑥ Wiring diagram	1

Note: Refer to the installation manual for the installation.

MITSUBISHI ELECTRIC CORPORATION

HEAD OFFICE: TOKYO BLDG., 2-7-3, MARUNOUCHI, CHIYODA-KU, TOKYO 100-8310, JAPAN

© Copyright 2009 MITSUBISHI ELECTRIC CORPORATION
 Distributed in Nov. 2014. No. OBB543 REVISED EDITION-D
 Distributed in Apr. 2012. No. OBB543 REVISED EDITION-C
 Distributed in Apr. 2011. No. OBB543 REVISED EDITION-B
 Distributed in Sep. 2010. No. OBB543 REVISED EDITION-A 5
 Distributed in Jul. 2009. No. OBB543 5
 Made in Japan

New publication, effective Nov. 2014
 Specifications are subject to change without notice.