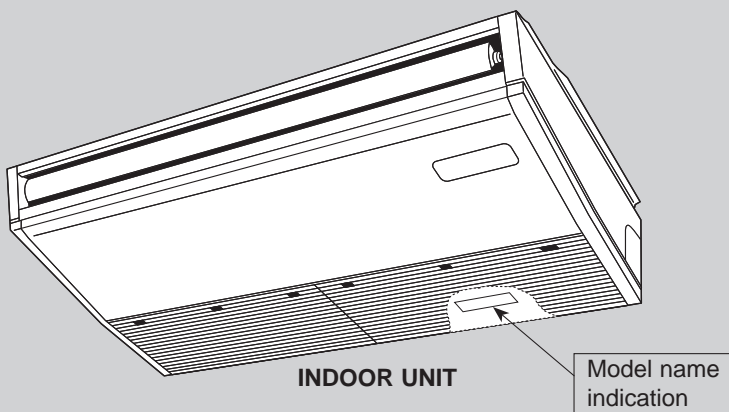


# PARTS CATALOG

## Series PCA Ceiling Suspended R410A

Indoor unit [Model Name]	[Service Ref.]
PCA-A24KA8	<b>PCA-A24KA8</b>
PCA-A30KA8	<b>PCA-A30KA8</b>
PCA-A36KA8	<b>PCA-A36KA8</b>
PCA-A42KA8	<b>PCA-A42KA8</b>



**WIRED REMOTE  
CONTROLLER**  
(Option)



**WIRELESS REMOTE  
CONTROLLER (Option)**

### CONTENTS

1. SERVICE PARTS LIST ..... 2
2. OPTIONAL PARTS ..... 8

**SERVICE MANUAL (TCH113)**

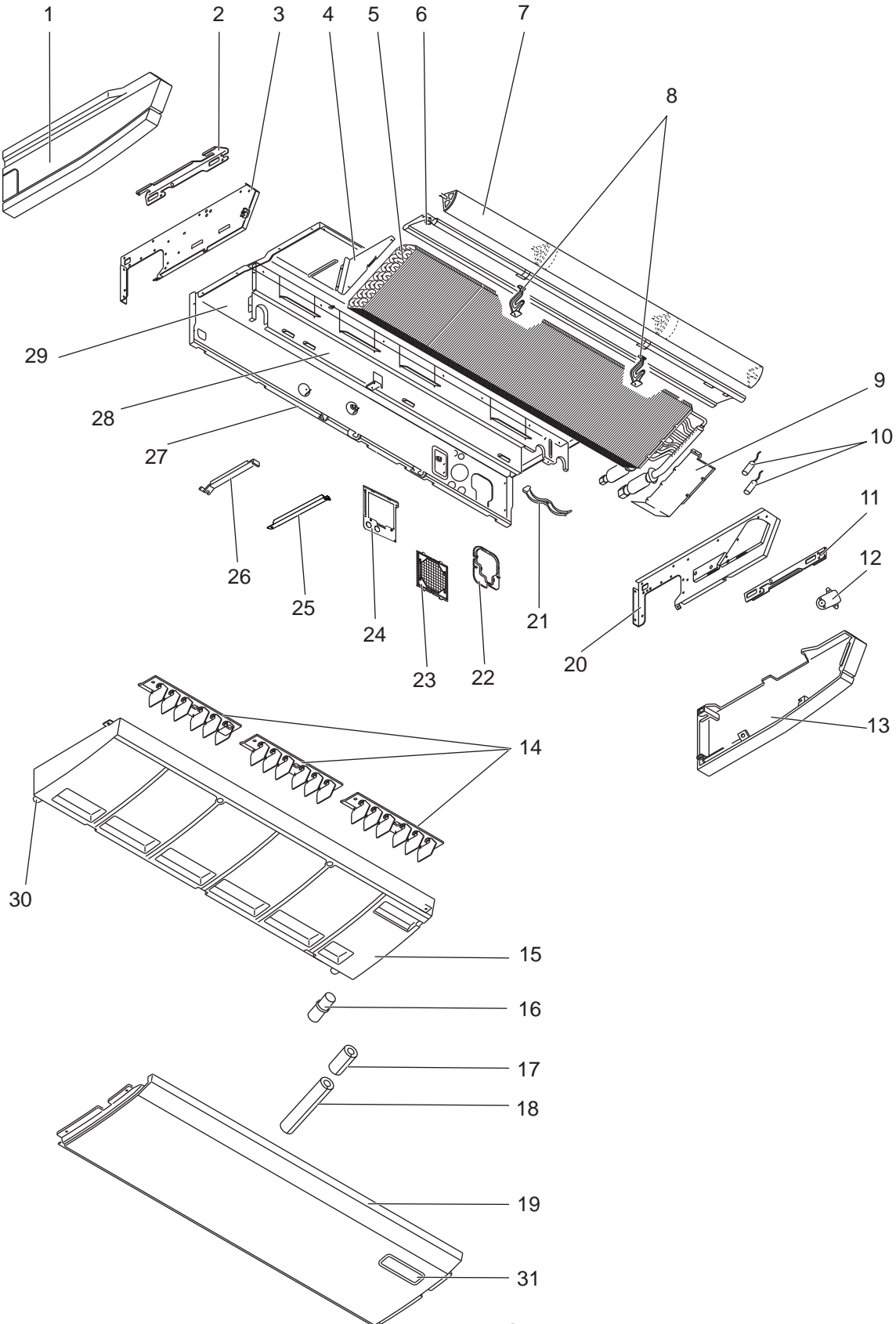
**STRUCTURAL AND FUNCTIONAL PARTS (1)**

PCA-A24KA8

PCA-A30KA8

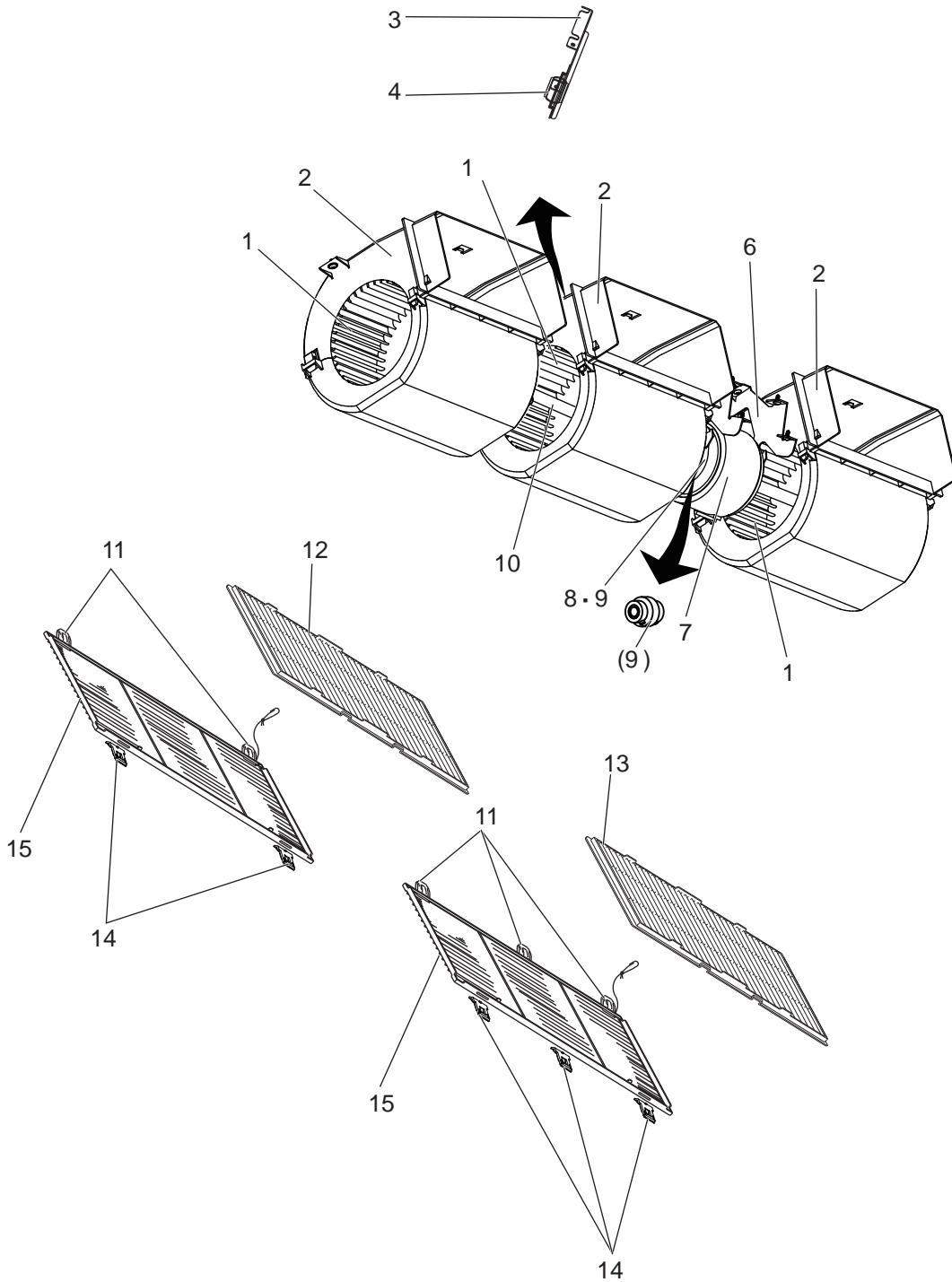
PCA-A36KA8

PCA-A42KA8

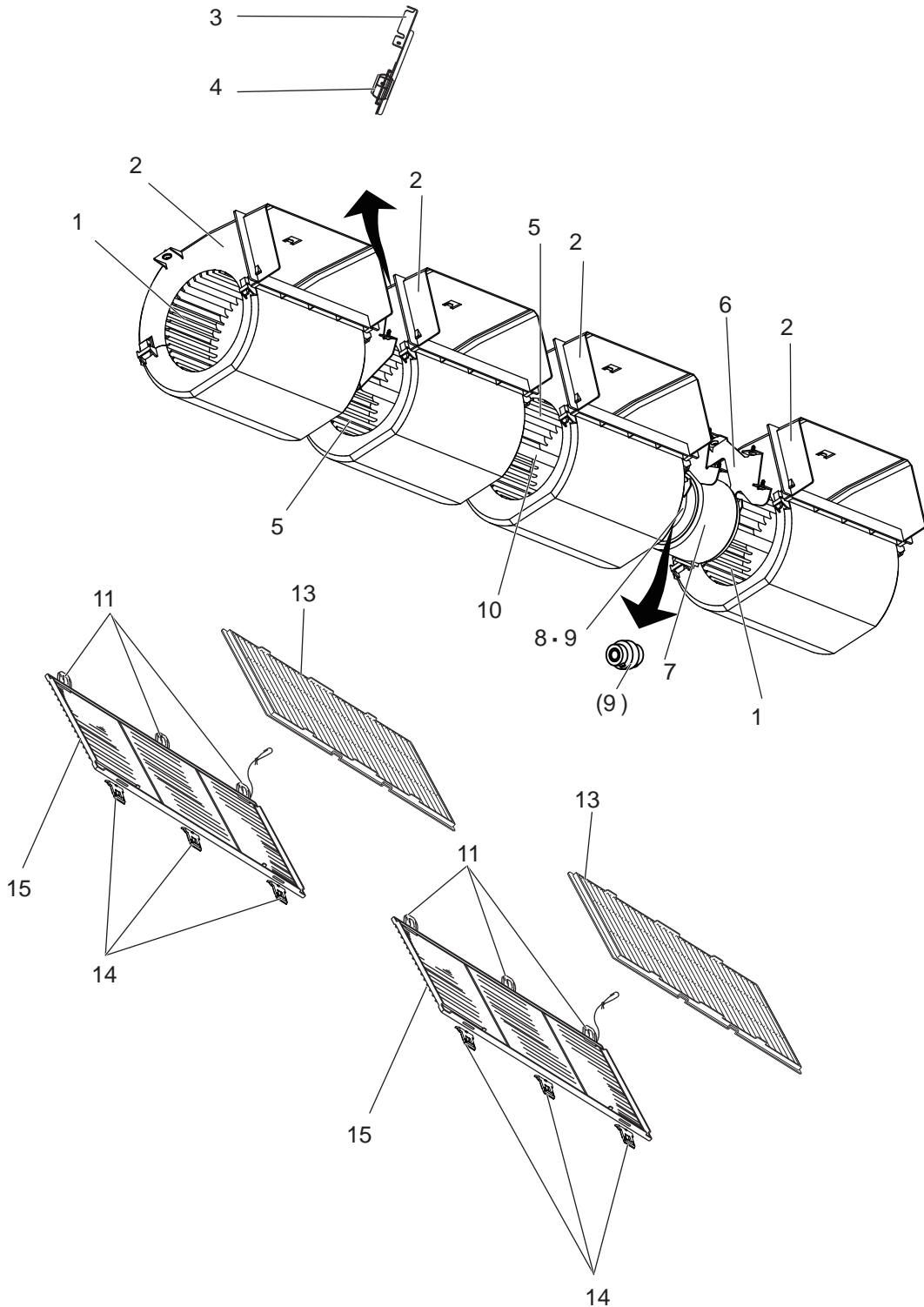


No.	Parts No.	Parts Name	Specification	Q'ty/unit				Remarks (Drawing No.)	Wiring Diagram Symbol	Recom- mended Q'ty
				PCA-A24KA8	PCA-A30KA8	PCA-A36KA8	PCA-A42KA8			
1	E27 648 086	SIDE PANEL-L		1	1	1	1			
2	E27 648 809	LEG-L		1	1	1	1			
3	E27 664 252	SIDE PLATE-L		1	1	1	1			
4	E27 648 648	COIL SUPPORT-H		1	1					
	E27 649 648	COIL SUPPORT-H				1				
	E27 651 648	COIL SUPPORT-H					1			
5	E27 664 620	HEAT EXCHANGER		1	1					
	E27 666 620	HEAT EXCHANGER				1				
	E27 782 620	HEAT EXCHANGER					1			
6	E27 78R 000	FRONT PANEL		1	1					
	E27 80R 000	FRONT PANEL				1	1			
7	E27 648 037	AUTO VANE		1	1					
	E27 649 037	AUTO VANE				1	1			
8	E27 648 043	VANE SUPPORT		2	2	2	2			
9	E27 650 648	COIL SUPPORT		1	1	1	1			
10	E27 696 307	THERMISTOR (PIPE)		1	1	1	1		TH2	
11	E27 648 808	LEG-R		1	1	1	1			
12	E27 648 303	VANE MOTOR ASSY		1	1	1	1		MV	
13	E27 648 085	SIDE PANEL-R		1	1	1	1			
14	E27 648 042	G.V ASSY-5		3	3					
	E27 649 042	G.V ASSY-6				3	3			
15	E27 664 700	DRAIN PAN ASSY		1	1					
	E27 666 700	DRAIN PAN ASSY				1	1			
16	E27 648 704	JOINT SOCKET		1	1	1	1			
17	E27 648 706	DRAIN SOCKET COVER		1	1	1	1			
18	E27 648 703	DRAIN HOSE COVER		1	1	1	1			
19	E27 648 717	UNDER PANEL		1	1					
	E27 649 717	UNDER PANEL				1	1			
20	E27 664 251	SIDE PLATE-R		1	1	1	1			
21	E27 648 708	PIPE BAND		1	1	1	1			
22	E27 648 903	PIPE HOLE COVER		1	1	1	1			
23	E27 664 100	AIR FILTER		1	1	1	1			
24	E27 664 102	FILTER GUIDE		1	1	1	1			
25	-	BEAM		1	1	1	1	(BH02G431G12)		
26	-	BEAM		1	1	1	1	(RG00D642G06)		
27	E27 664 522	REAR PANEL		1	1					
	E27 666 522	REAR PANEL				1	1			
28	-	FAN PLATE		1	1			(BH00B360G33)		
	-	FAN PLATE				1	1	(BH00B360G34)		
29	E27 648 290	BASE		1	1					
	E27 649 290	BASE				1	1			
30	E27 648 524	DRAIN PLUG		1	1	1	1			
31	-	CI PLATE		1	1	1	1	(BK00J592G01)		

**STRUCTURAL AND FUNCTIONAL PARTS (2)**  
**PCA-A24KA8      PCA-A30KA8**



**STRUCTURAL AND FUNCTIONAL PARTS (3)**  
**PCA-A36KA8      PCA-A42KA8**



No.	Parts No.	Parts Name	Specification	Q'ty/unit				Remarks (Drawing No.)	Wiring Diagram Symbol	Recom- mended Q'ty
				PCA-A24KA8	PCA-A30KA8	PCA-A36KA8	PCA-A42KA8			
1	E27 648 500	SIROCCO FAN	Small	3	3	2	2			
2	E27 648 237	FAN CASING	TOP+UNDER	3	3	4	4			
3	E27 648 512	BEARING SUPPORT		1	1	1	1			
4	E27 648 504	SLEEVE BEARING		1	1	1	1			
5	E27 649 500	SIROCCO FAN	Large			2	2			
6	E27 19A 334	MOTOR LEG		1	1	1	1			
7	E27 78R 300	INDOOR FAN MOTOR		1	1				MF	
	E27 80R 300	INDOOR FAN MOTOR				1	1		MF	
8	E27 648 333	PIECE (MOTOR) R.L		1	1	1	1			
9	E27 648 518	FAN JOINT ASSY		1	1	1	1			
10	E27 648 499	SHAFT FAN		1	1					
	E27 649 499	SHAFT FAN				1	1			
11	E27 648 143	GRILLE HINGE		5	5	6	6			
12	E27 648 100	AIR FILTER	Small	1	1					
13	E27 649 100	AIR FILTER	Large	1	1	2	2			
14	E27 648 142	GRILLE CATCH		5	5	6	6			
15	E27 648 010	GRILLE ASSY		1	1					
	E27 649 010	GRILLE ASSY		1	1	2	2			

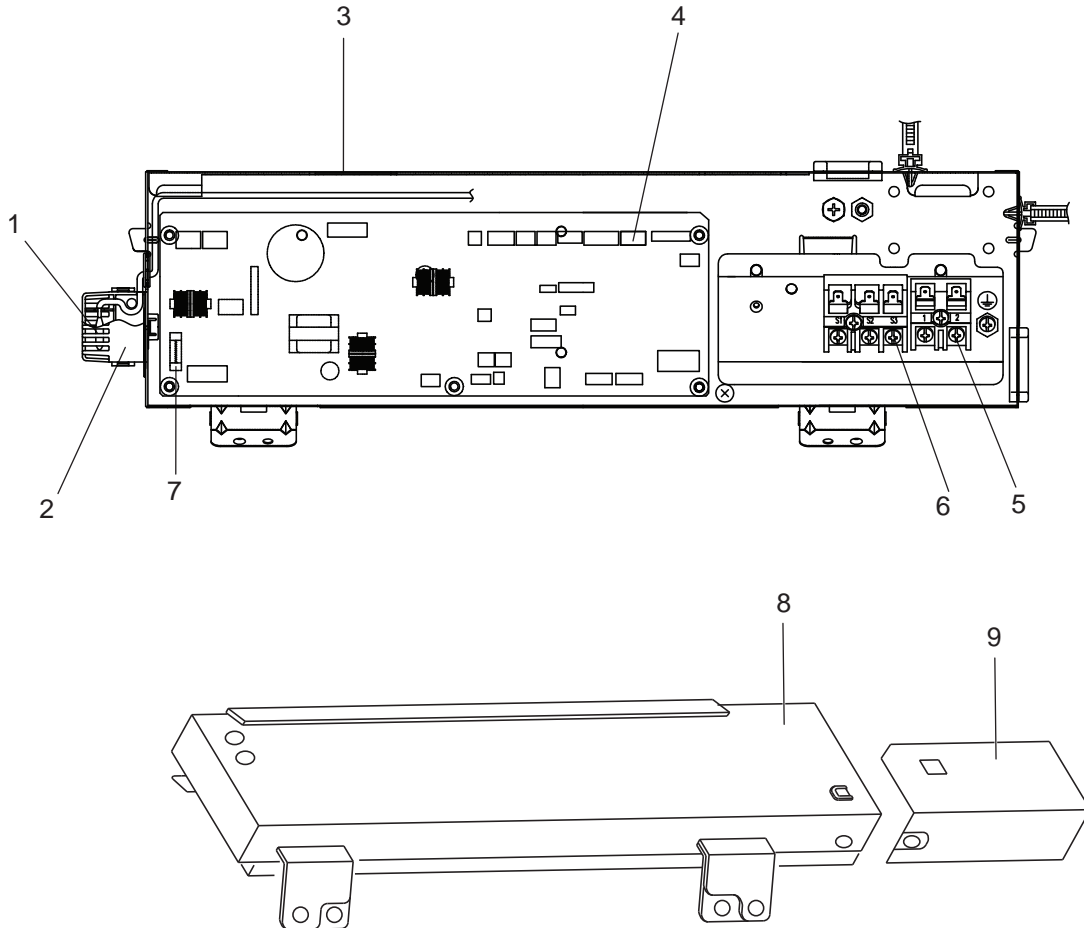
## ELECTRICAL PARTS

PCA-A24KA8

PCA-A30KA8

PCA-A36KA8

PCA-A42KA8



No.	Parts No.	Parts Name	Specification	Q'ty/unit				Remarks (Drawing No.)	Wiring Diagram Symbol	Recom- mended Q'ty
				PCA-A24KA8	PCA-A30KA8	PCA-A36KA8	PCA-A42KA8			
1	E27 518 308	THERMISTOR (ROOM)		1	1	1	1		TH1	
2	-	SENSOR COVER		1	1	1	1	(RG25V835G09)		
3	-	ELECTRICAL BOX		1	1	1	1	(VM00C951G01)		
4	E27 78R 447	CONTROLLER BOARD		1	1	1	1		I.B.	
5	E27 516 375	TERMINAL BLOCK	2P (1, 2)	1	1	1	1		TB5	
6	E27 78R 375	TERMINAL BLOCK	3P (S1, S2, S3)	1	1	1	1		TB4	
7	E27 78R 382	FUSE	6.3A 250VAC	1	1	1	1		FUSE	
8	-	ELECTRICAL BOX COVER		1	1	1	1	(VM00C630G16)		
9	-	ELECTRICAL BOX COVER		1	1	1	1	(RG02V755G03)		
⑩	E22 A45 385	VARISTOR		1	1	1	1		ZNR01,ZNR02	

**2****OPTIONAL PARTS**

<b>Parts name</b>	<b>Parts No.</b>
WIRED REMOTE CONTROLLER	PAR-41MAA, PAC-YT53CRAU
WIRELESS REMOTE CONTROLLER	PAR-SL101A-E
WIRELESS SIGNAL RECEIVER	PAR-FA32MA
DRAIN PUMP	PAC-SH84DM-E
i-see Sensor	PAC-SH91MK-E
WIRELESS REMOTE CONTROLLER KIT	PAR-SL93B-E
WIRELESS REMOTE CONTROLLER KIT WITH i-see Sensor	PAR-SA92MW-E
HIGH EFFICIENCY FILTER ELEMENT (24, 30)	PAC-SH89KF-E
HIGH EFFICIENCY FILTER ELEMENT (36, 42)	PAC-SH90KF-E
Wi-Fi INTERFACE	PAC-WHS01WF-E

**mitsubishi electric corporation**

HEAD OFFICE : TOKYO BUILDING, 2-7-3, MARUNOUCHI, CHIYODA-KU, TOKYO 100-8310, JAPAN

mitsubishi electric consumer products (thailand) co., ltd.  
700/406 MOO 7, TAMBON DON HUA ROH,  
AMPHUR MUANG, CHONBURI 20000 THAILAND  
Published: Feb. 2023 No. TCB113  
Made in Thailand

Specifications are subject to change without notice.