

SERVICE PARTS LIST FOR MITSUBISHI ELECTRIC PACKAGED AIR-CONDITIONERS

Series : PUHY-P•T(S)LMU-A(-BS)
PUHY-P•Y(S)LMU-A(-BS)

For use with the R410A

REVISED

May 2015

BWE01502A

INDEX

PUHY-P72TLMU-A(-BS)
PUHY-P96TLMU-A(-BS)
PUHY-P120TLMU-A(-BS)
PUHY-P144TLMU-A(-BS)
PUHY-P168TLMU-A(-BS)
PUHY-P72YLMU-A(-BS)
PUHY-P96YLMU-A(-BS)
PUHY-P120YLMU-A(-BS)
PUHY-P144YLMU-A(-BS)
PUHY-P168YLMU-A(-BS)

Refer to the next page for the package names.

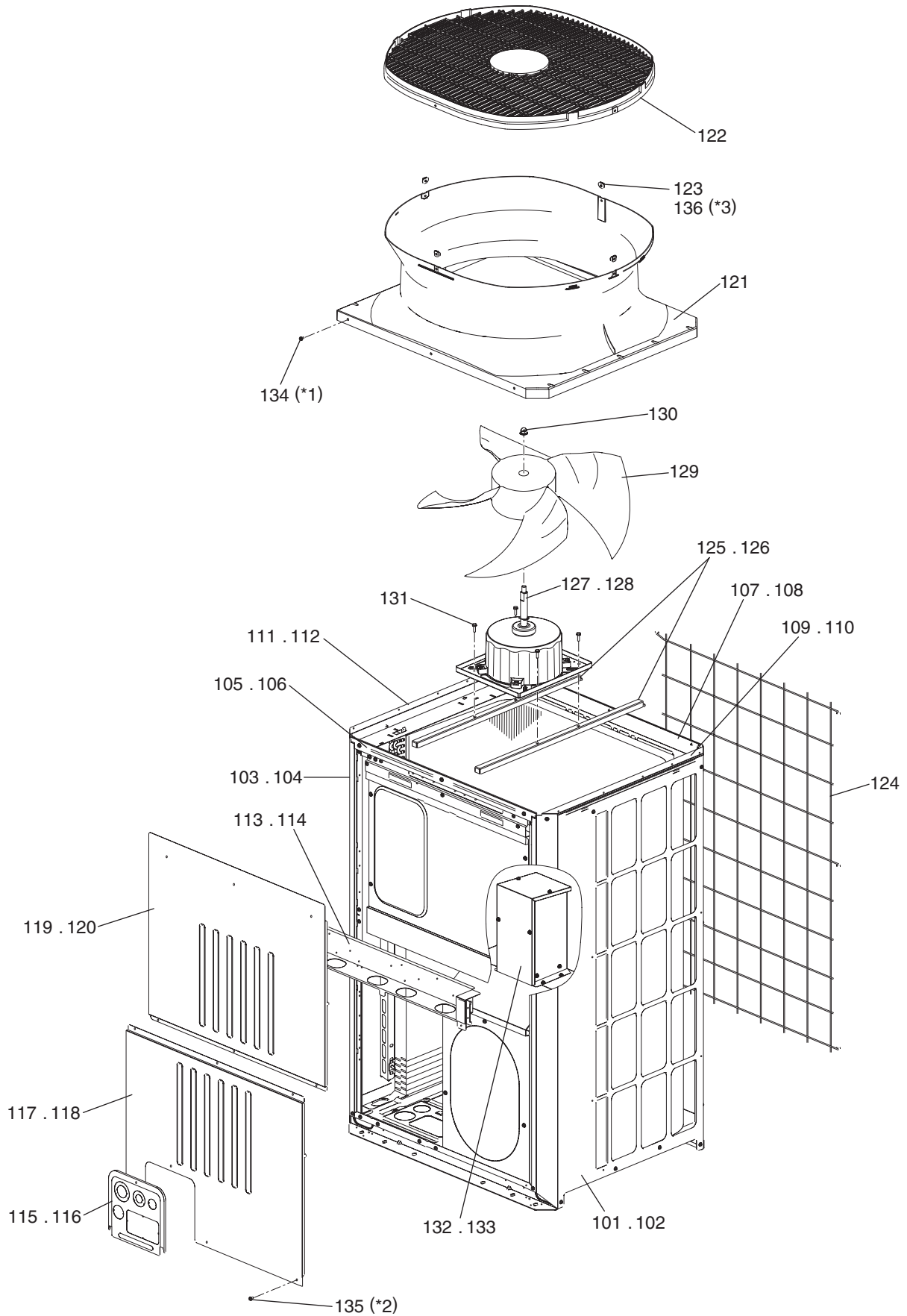
Part information update day : 2015/05/26

Please change the old catalog (issued Mar. 2015, No.BWE015020) to this new catalog.
Content of revision : Some of parts are changed.

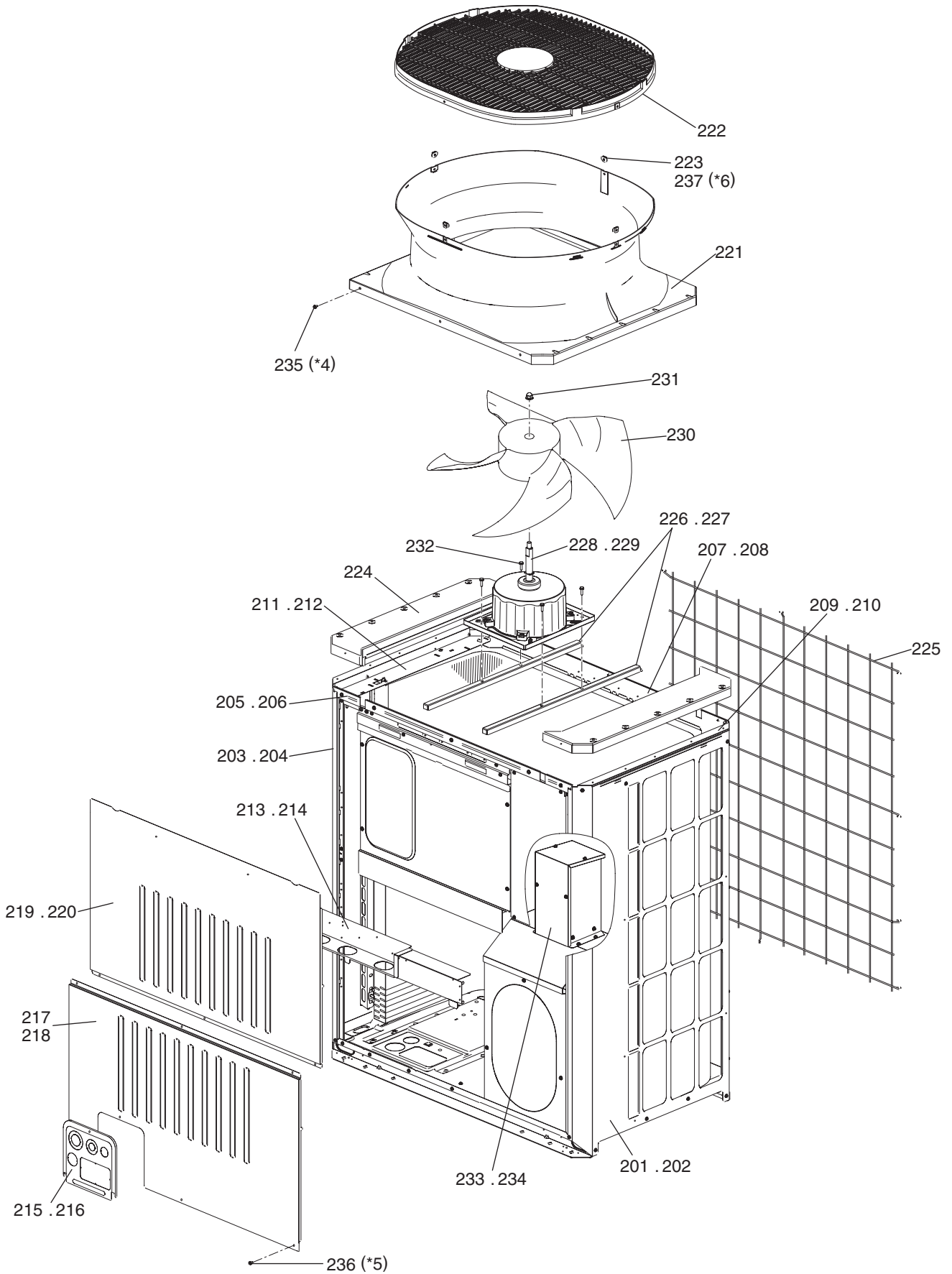


The Package name list

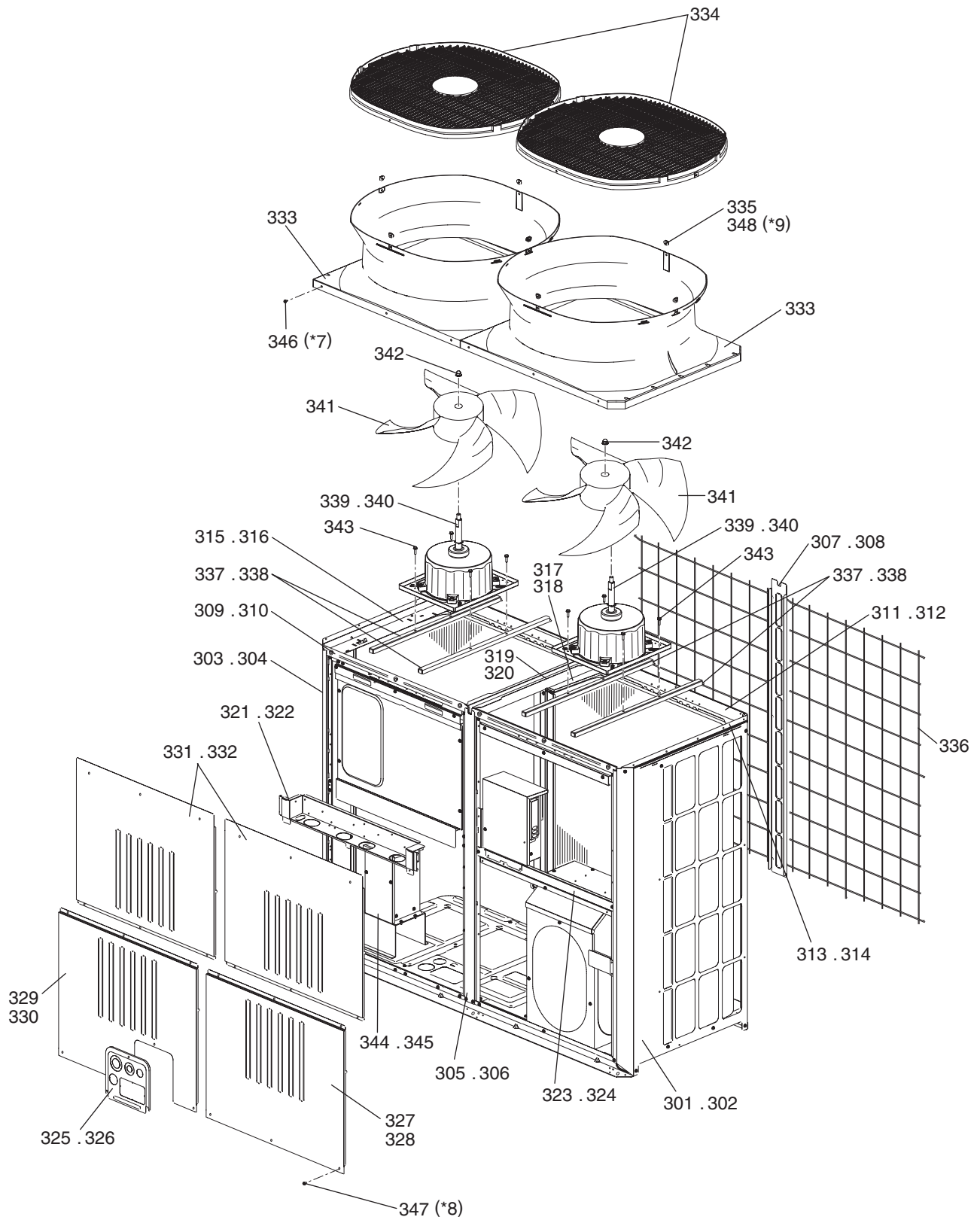
PUHY-P144TSLMU-A(-BS)	[PUHY-P72TLMU-A(-BS) + PUHY-P72TLMU-A(-BS)]
PUHY-P168TSLMU-A(-BS)	[PUHY-P72TLMU-A(-BS) + PUHY-P96TLMU-A(-BS)]
PUHY-P192TSLMU-A(-BS)	[PUHY-P72TLMU-A(-BS) + PUHY-P120TLMU-A(-BS)]
PUHY-P216TSLMU-A(-BS)	[PUHY-P96TLMU-A(-BS) + PUHY-P120TLMU-A(-BS)]
PUHY-P240TSLMU-A(-BS)	[PUHY-P120TLMU-A(-BS) + PUHY-P120TLMU-A(-BS)]
PUHY-P264TSLMU-A(-BS)	[PUHY-P72TLMU-A(-BS) + PUHY-P72TLMU-A(-BS) + PUHY-P120TLMU-A(-BS)]
PUHY-P288TSLMU-A(-BS)	[PUHY-P72TLMU-A(-BS) + PUHY-P96TLMU-A(-BS) + PUHY-P120TLMU-A(-BS)]
PUHY-P312TSLMU-A(-BS)	[PUHY-P72TLMU-A(-BS) + PUHY-P120TLMU-A(-BS) + PUHY-P120TLMU-A(-BS)]
PUHY-P336TSLMU-A(-BS)	[PUHY-P96TLMU-A(-BS) + PUHY-P120TLMU-A(-BS) + PUHY-P120TLMU-A(-BS)]
PUHY-P360TSLMU-A(-BS)	[PUHY-P120TLMU-A(-BS) + PUHY-P120TLMU-A(-BS) + PUHY-P120TLMU-A(-BS)]
PUHY-P144YSLMU-A(-BS)	[PUHY-P72YLMU-A(-BS) + PUHY-P72YLMU-A(-BS)]
PUHY-P168YSLMU-A(-BS)	[PUHY-P72YLMU-A(-BS) + PUHY-P96YLMU-A(-BS)]
PUHY-P192YSLMU-A(-BS)	[PUHY-P72YLMU-A(-BS) + PUHY-P120YLMU-A(-BS)]
PUHY-P216YSLMU-A(-BS)	[PUHY-P96YLMU-A(-BS) + PUHY-P120YLMU-A(-BS)]
PUHY-P240YSLMU-A(-BS)	[PUHY-P120YLMU-A(-BS) + PUHY-P120YLMU-A(-BS)]
PUHY-P264YSLMU-A(-BS)	[PUHY-P72YLMU-A(-BS) + PUHY-P72YLMU-A(-BS) + PUHY-P120YLMU-A(-BS)]
PUHY-P288YSLMU-A(-BS)	[PUHY-P72YLMU-A(-BS) + PUHY-P96YLMU-A(-BS) + PUHY-P120YLMU-A(-BS)]
PUHY-P312YSLMU-A(-BS)	[PUHY-P72YLMU-A(-BS) + PUHY-P120YLMU-A(-BS) + PUHY-P120YLMU-A(-BS)]
PUHY-P336YSLMU-A(-BS)	[PUHY-P96YLMU-A(-BS) + PUHY-P120YLMU-A(-BS) + PUHY-P120YLMU-A(-BS)]
PUHY-P360YSLMU-A(-BS)	[PUHY-P120YLMU-A(-BS) + PUHY-P120YLMU-A(-BS) + PUHY-P120YLMU-A(-BS)]



*1 PUHY-P72TLMU-A(-BS)...22 WFT Screws (part No.134), PUHY-P72YLMU-A(-BS)...38 WFT Screws (part No.134)
 *2 PUHY-P72TLMU-A(-BS)...79 H Screws (part No.135), PUHY-P72YLMU-A(-BS)...84 H Screws (part No.135)
 *3 4 WFT Screws (part No.136)



*4 PUHY-P96TLMU-A(-BS)...30 WFT Screws (part No.235), PUHY-P96YLMU-A(-BS)...46 WFT Screws (part No.235)
 *5 PUHY-P96TLMU-A(-BS)...83 H Screws (part No.236), PUHY-P96YLMU-A(-BS)...88 H Screws (part No.236)
 *6 4 WFT Screws (part No.237)



- *7 PUHY-P120,P144,P168TLMU-A(-BS)...52 WFT Screws (part No.346),
 PUHY-P120,P144,P168YLMU-A(-BS)...68 WFT Screws (part No.346)
- *8 PUHY-P120,P144,P168TLMU-A(-BS)...115 H Screws (part No.347),
 PUHY-P120,P144,P168YLMU-A(-BS)...123 H Screws (part No.347)
- *9 8 WFT Screws (part No.348)

**PUHY-P120,P144,P168TLMU-A(-BS)
PUHY-P120,P144,P168YLMU-A(-BS)**

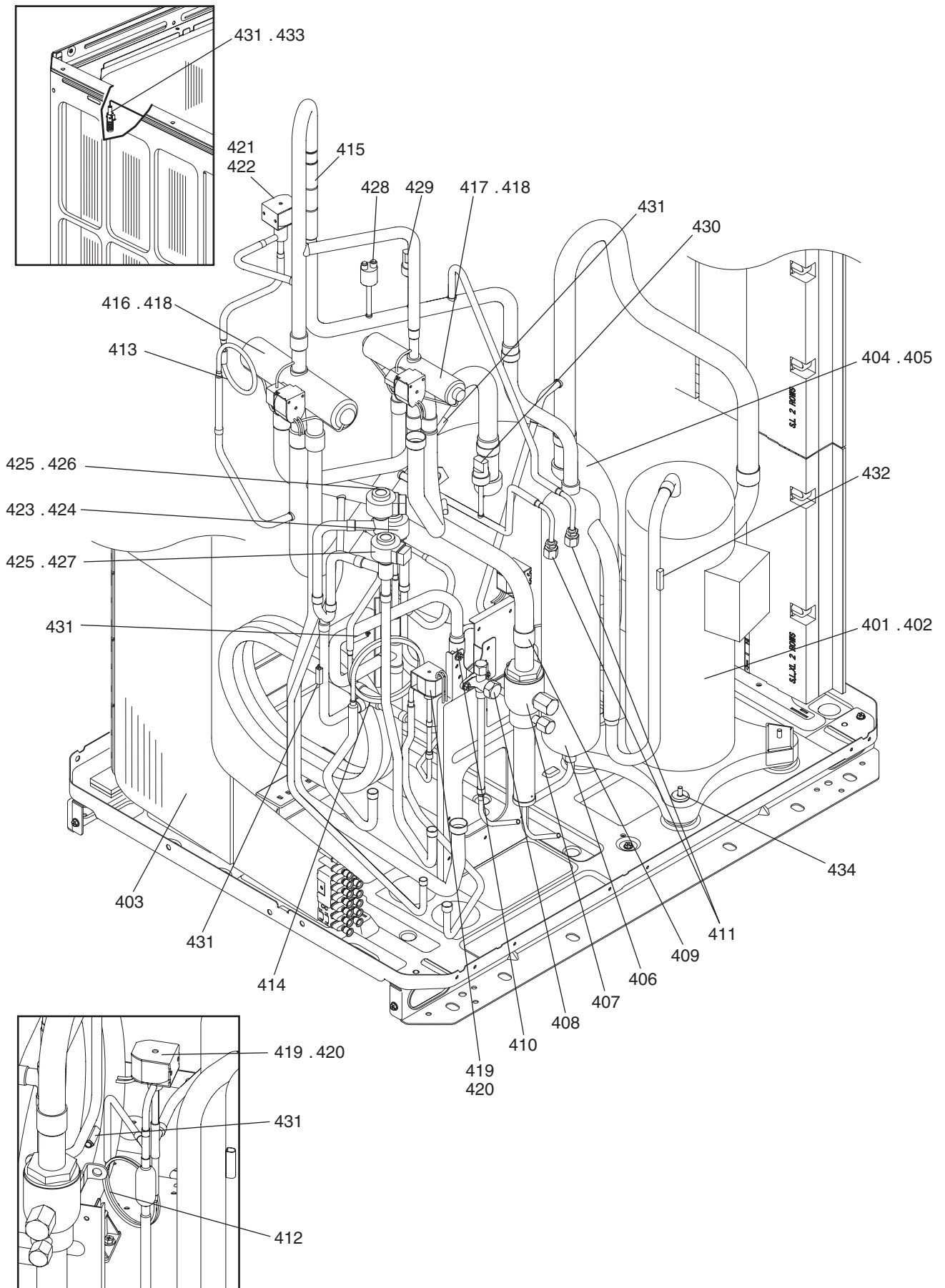
EXTERNAL PARTS & BLOWER PARTS (3)

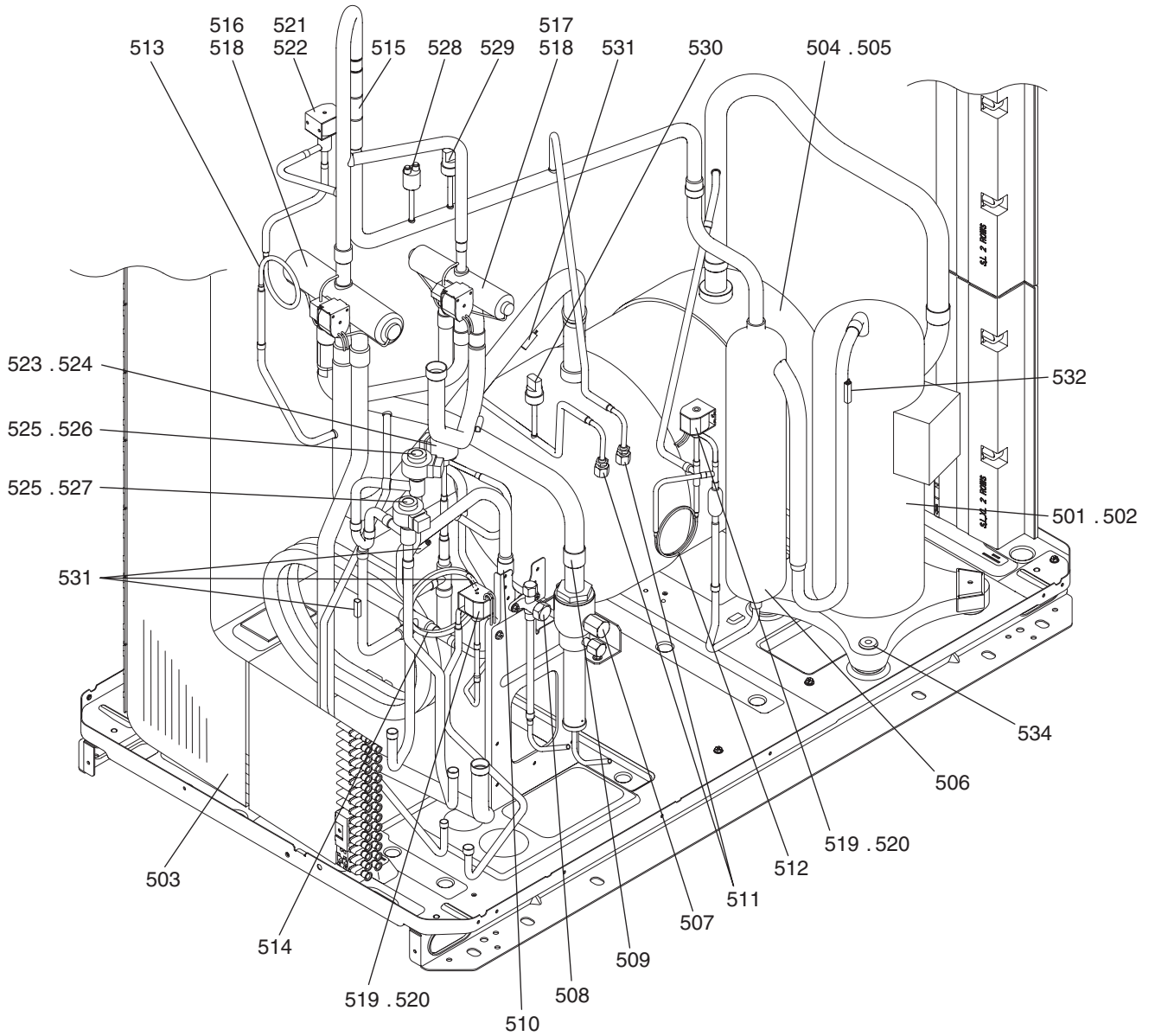
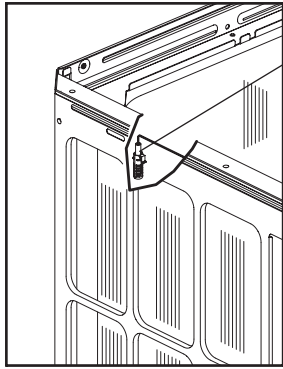
No.	Part No.	G : RoHS Apply Only W : RoHS Apply by Running Change	Part Name	Spec.	PUHY-P120TLMU-A	PUHY-P120YLMU-A+BS	PUHY-P144TLMU-A	PUHY-P144YLMU-A+BS	PUHY-P168TLMU-A	PUHY-P168YLMU-A+BS	Dwg. No.	Notes for the models	Revision info.
301	R63 052 652	G	Panel R		1		1		1		KB02A370G05		
302	R63 053 652	G	Panel R	BS		1		1		1	KB02A370G06		
303	R63 050 652	G	Panel L		1		1		1		KB02A369G07		
304	R63 051 652	G	Panel L	BS		1		1		1	KB02A369G08		
305	R61 022 626	G	Pillar assy MF		1		1		1		KD00R845G09		
306	R61 023 626	G	Pillar assy MF	BS		1		1		1	KD00R845G10		
307	R61 030 626	G	Pillar MB		1		1		1		KD02M109G01		
308	R61 031 626	G	Pillar MB	BS		1		1		1	KD02M109G02		
309	R61 061 162	G	Frame assy F		1		1		1		KD00L182G03		
310	R61 094 162	G	Frame assy F	BS		1		1		1	KD00L182G07		
311	R61 020 160	G	Frame assy B		1		1		1		KJ00L536G01		
312	R61 021 160	G	Frame assy B	BS		1		1		1	KJ00L536G02		
313	R61 105 162	G	Frame assy LR		1		1		1		KJ00L538G01		
314	R61 106 162	G	Frame assy LR	BS		1		1		1	KJ00L538G02		
315	R61 016 160	G	Frame assy L		1		1		1		KJ00L537G01		
316	R61 017 160	G	Frame assy L	BS		1		1		1	KJ00L537G02		
317	R61 014 499	G	Plate HEX assy		1		1		1		KJ00L539G01		
318	R61 015 499	G	Plate HEX assy	BS		1		1		1	KJ00L539G02		
319	R61 072 162	G	Frame MT		1		1		1		KB02J833H01		
320	R61 073 162	G	Frame MT	BS		1		1		1	KB02J833G01		
321	R63 087 162	G	Frame M assy		1		1		1		KD00L159G09		
322	R63 088 162	G	Frame M assy	BS		1		1		1	KD00L159G10		
323	R61 058 162	G	Frame MR		1		1		1		KD02G743H04		
324	R61 059 162	G	Frame MR	BS		1		1		1	KD02G743G02		
325	R61 120 690	G	Piping cover		1		1		1		KB02L912G07		
326	R61 121 690	G	Piping cover	BS		1		1		1	KB02L912G08		
327	R61 212 651	G	Panel FBR		1		1		1		KB02J838H04		
328	R61 213 651	G	Panel FBR	BS		1		1		1	KB02J838G06		
329	R61 182 651	G	Panel FBL		1		1		1		KB02J837H02		
330	R61 183 651	G	Panel FBL	BS		1		1		1	KB02J837G04		
331	R61 177 651	G	Panel FU		2		2		2		KB02J839H01		
332	R61 178 651	G	Panel FU	BS		2		2		2	KB02J839G02		
333	R61 005 119	G	Bell mouth		2	2	2	2	2	2	KB25A367H03		
334	R11 003 009	G	Fan guard		2	2	2	2	2	2	KB25V019H01		
335	R61 009 669	G	Plate Fan guard		8	8	8	8	8	8	KD02D205H02		
336	R61 010 611	G	Fin guard B		2	2	2	2	2	2	KB07N272G01		
337	R61 016 140	G	Base fan		4		4		4		KD02D026H01		
338	R61 017 140	G	Base fan	BS		4		4		4	KD02D026G04		
339	R61 267 220	G	Motor	920W T 200V	2	2	2	2	2	2	KB61A888G01		
340	R61 268 220	G	Motor	920W Y 415V							KB61A888G02		
341	R63 4H6 300	G	Fan		2	2	2	2	2	2	KB25A009H04		
342	R63 4H6 122	G	Box nut	M12 CH	2	2	2	2	2	2	P552000X01		
343	R63 014 087	G	Upset Screw	M6 x 10	8	8	8	8	8	8	P516047X01		
344	R61 030 260	G	Transformer assy								KD00C027G03		
345	R61 031 260	G	Transformer assy	BS							KD00C027G04		

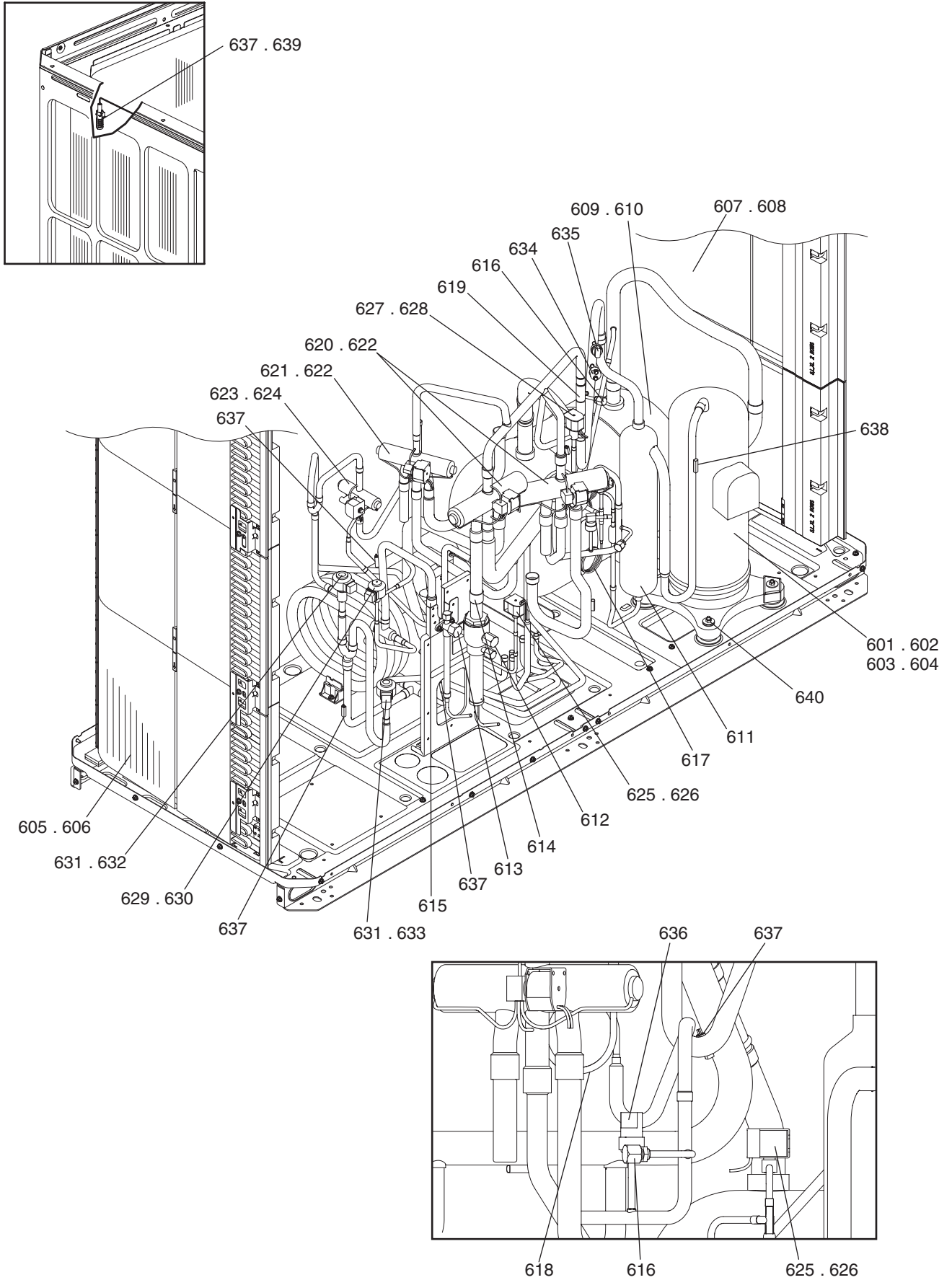
**PUHY-P120,P144,P168TLMU-A(-BS)
PUHY-P120,P144,P168YLMU-A(-BS)**

EXTERNAL PARTS & BLOWER PARTS (3)

No.	Part No.	G : RoHS Apply Only W : RoHS Apply by Running Change	Part Name	Spec.	PUHY-P120YLMU-A	PUHY-P120TLMU-A-BS	PUHY-P144YLMU-A	PUHY-P144TLMU-A-BS	PUHY-P168YLMU-A	PUHY-P168TLMU-A-BS	Dwg. No.	Notes for the models	Revision info.
301	R63 052 652	G	Panel R		1		1		1		KB02A370G05		
302	R63 053 652	G	Panel R	BS		1		1		1	KB02A370G06		
303	R63 050 652	G	Panel L		1		1		1		KB02A369G07		
304	R63 051 652	G	Panel L	BS		1		1		1	KB02A369G08		
305	R61 022 626	G	Pillar assy MF		1		1		1		KD00R845G09		
306	R61 023 626	G	Pillar assy MF	BS		1		1		1	KD00R845G10		
307	R61 030 626	G	Pillar MB		1		1		1		KD02M109G01		
308	R61 031 626	G	Pillar MB	BS		1		1		1	KD02M109G02		
309	R61 061 162	G	Frame assy F		1		1		1		KD00L182G03		
310	R61 094 162	G	Frame assy F	BS		1		1		1	KD00L182G07		
311	R61 020 160	G	Frame assy B		1		1		1		KJ00L536G01		
312	R61 021 160	G	Frame assy B	BS		1		1		1	KJ00L536G02		
313	R61 105 162	G	Frame assy LR		1		1		1		KJ00L538G01		
314	R61 106 162	G	Frame assy LR	BS		1		1		1	KJ00L538G02		
315	R61 016 160	G	Frame assy L		1		1		1		KJ00L537G01		
316	R61 017 160	G	Frame assy L	BS		1		1		1	KJ00L537G02		
317	R61 014 499	G	Plate HEX assy		1		1		1		KJ00L539G01		
318	R61 015 499	G	Plate HEX assy	BS		1		1		1	KJ00L539G02		
319	R61 072 162	G	Frame MT		1		1		1		KB02J833H01		
320	R61 073 162	G	Frame MT	BS		1		1		1	KB02J833G01		
321	R63 087 162	G	Frame M assy		1		1		1		KD00L159G09		
322	R63 088 162	G	Frame M assy	BS		1		1		1	KD00L159G10		
323	R61 058 162	G	Frame MR		1		1		1		KD02G743H04		
324	R61 059 162	G	Frame MR	BS		1		1		1	KD02G743G02		
325	R61 120 690	G	Piping cover		1		1		1		KB02L912G07		
326	R61 121 690	G	Piping cover	BS		1		1		1	KB02L912G08		
327	R61 212 651	G	Panel FBR		1		1		1		KB02J838H04		
328	R61 213 651	G	Panel FBR	BS		1		1		1	KB02J838G06		
329	R61 182 651	G	Panel FBL		1		1		1		KB02J837H02		
330	R61 183 651	G	Panel FBL	BS		1		1		1	KB02J837G04		
331	R61 177 651	G	Panel FU		2		2		2		KB02J839H01		
332	R61 178 651	G	Panel FU	BS		2		2		2	KB02J839G02		
333	R61 005 119	G	Bell mouth		2	2	2	2	2	2	KB25A367H03		
334	R11 003 009	G	Fan guard		2	2	2	2	2	2	KB25V019H01		
335	R61 009 669	G	Plate Fan guard		8	8	8	8	8	8	KD02D205H02		
336	R61 010 611	G	Fin guard B		2	2	2	2	2	2	KB07N272G01		
337	R61 016 140	G	Base fan		4		4		4		KD02D026H01		
338	R61 017 140	G	Base fan	BS		4		4		4	KD02D026G04		
339	R61 267 220	G	Motor	920W T 200V							KB61A888G01		
340	R61 268 220	G	Motor	920W Y 415V	2	2	2	2	2	2	KB61A888G02		
341	R63 4H6 300	G	Fan		2	2	2	2	2	2	KB25A009H04		
342	R63 4H6 122	G	Box nut	M12 CH	2	2	2	2	2	2	P552000X01		
343	R63 014 087	G	Upset Screw	M6 x 10	8	8	8	8	8	8	P516047X01		
344	R61 030 260	G	Transformer assy		1		1		1		KD00C027G03		
345	R61 031 260	G	Transformer assy	BS		1		1		1	KD00C027G04		







PUHY-P120,P144,P168TLMU-A(-BS)
 PUHY-P120,P144,P168YLMU-A(-BS)

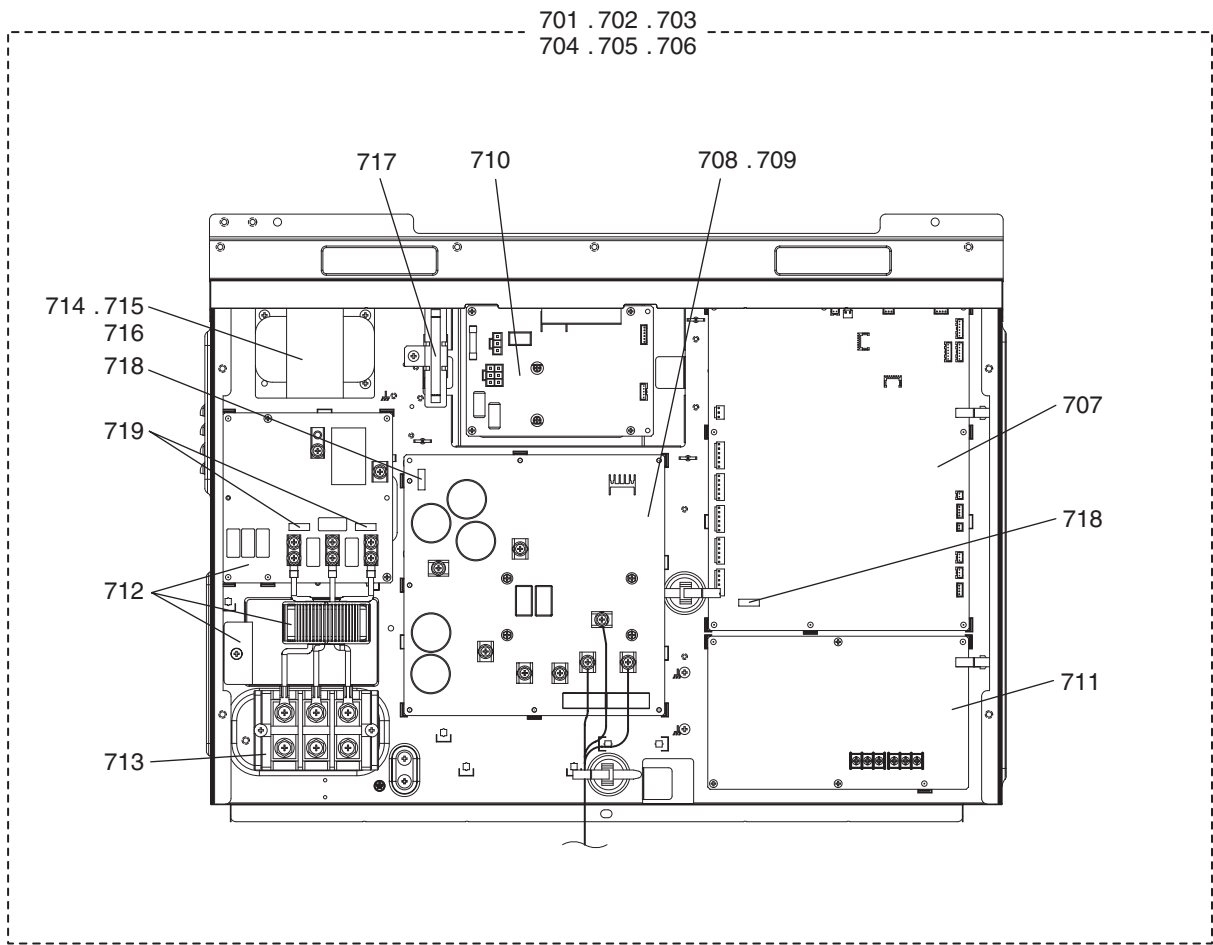
FUNCTIONAL PARTS (3)

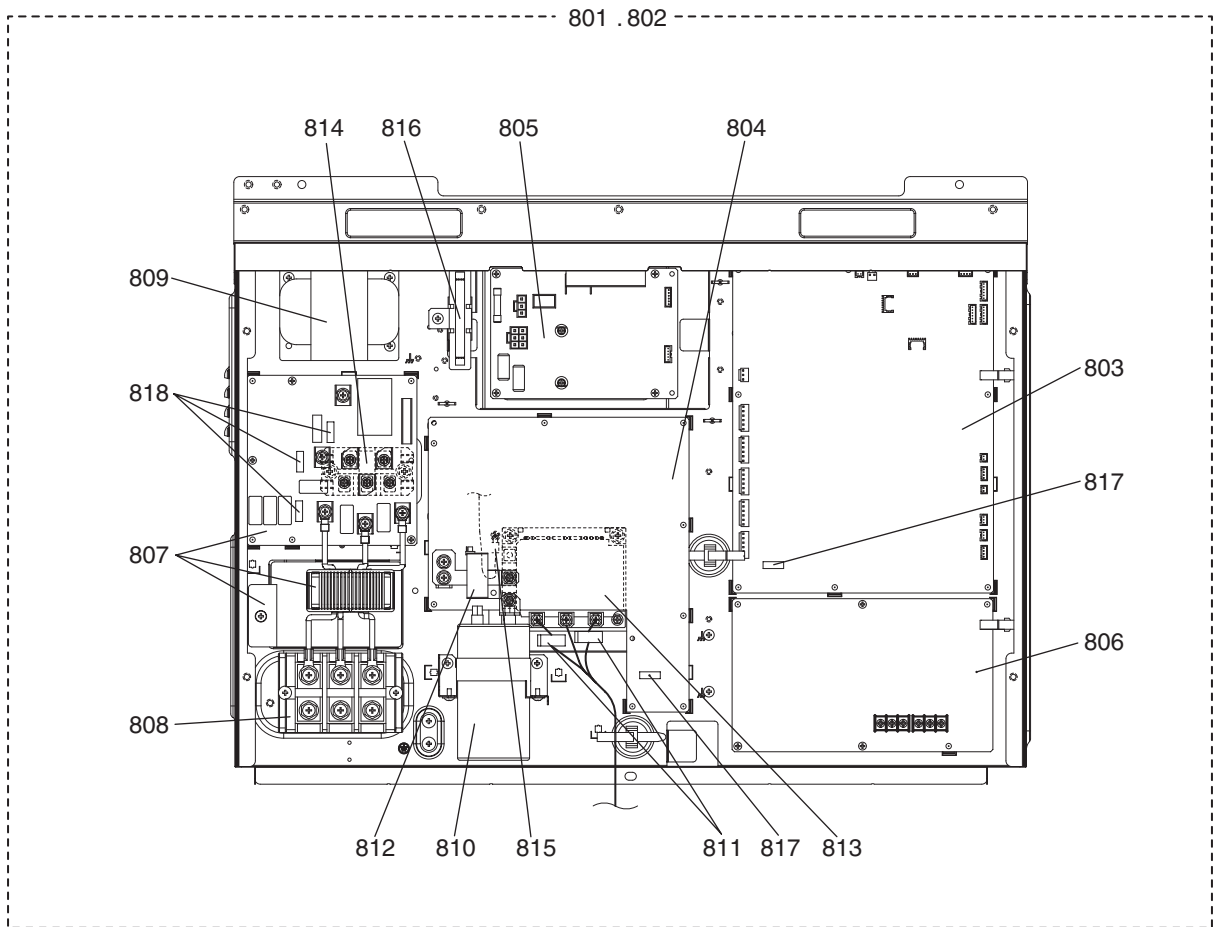
No.	Part No.	G : RoHS Apply Only W : RoHS Apply by Running Change	Part Name	Spec.	PUHY-P120TLMU-A	PUHY-P120YLMU-A-BS	PUHY-P144TLMU-A	PUHY-P144YLMU-A-BS	PUHY-P168TLMU-A	PUHY-P168YLMU-A-BS	Dwg. No.	Notes for the models	Revision info.
601	R69 128 478	G	Scroll compressor	HNB83FC-U	1	1	1	1			EP10136B08		
602	R69 125 478	G	Scroll compressor	HNB84FC-U					1	1	EP10126B06		
603	R69 129 478	G	Scroll compressor	HNB83FC-YE							EP10136B09		
604	R69 118 478	G	Scroll compressor	HNB84FC-YE							EP10126B04		
605	R61 931 480	G	Heat exchanger L	XL	1		1		1		KD00U696G01		
606	R61 932 480	G	Heat exchanger L	BS XL		1		1		1	KD00U696G02		
607	R61 933 480	G	Heat exchanger R	XL	1		1		1		KD00U695G01		
608	R61 934 480	G	Heat exchanger R	BS XL		1		1		1	KD00U695G02		
609	R61 089 484	G	Accumulator assy		1		1		1		KB54B479G31		
610	R61 088 484	G	Accumulator assy	BS		1		1		1	KB54B479G32		
611	R61 044 487	G	Oil separator assy		1	1	1	1	1	1	KJ00L830G02		
612	R61 009 410	G	Ball valve	SBV-JA10YGME-3	1	1	1	1	1	1	P636358X01	<BV1>	
613	R61 004 540	G	Valve	VSAMH4SSCM-LA1	1	1	1	1	1	1	P636345X01	<BV2>	
614	R61 008 454	G	Strainer	25.4D	1	1	1	1	1	1	KB48K250G01	<ST1>	
615	R63 Y03 454	G	Strainer	17.6D	1	1	1	1	1	1	W893281G01	<ST2>	
616	R63 R34 413	G	Check joint L		2	2	2	2	2	2	P666004X02	<(HP)CJ1,(LP)CJ2>	
617	R61 014 425	G	Capillary tube assy		1	1	1	1	1	1	KB49M503G01	<CP1>	
618	R63 021 425	G	Capillary tube		1	1	1	1	1	1	KD49D414G01	<CP2>	
619	R61 005 418	G	Check valve	YAV-P11Y5HMD-1	1	1	1	1	1	1	P633133X01	<CV1>	
620	R61 013 403	G	Four way valve	STF-H0731	2	2	2	2	2	2	P633130X01	<21S4a,21S4c>	
621	R61 014 403	G	Four way valve	STF-H0421	1	1	1	1	1	1	P633131X01	<21S4b>	
622	R61 040 243	G	Four way valve coil	STF-H01AQ1969UA1	3	3	3	3	3	3	P472095X01	<21S4a,21S4b,21S4c>	
623	R63 004 421	G	Two way valve	VR43202	1	1	1	1	1	1	P633129X02	<SV5b>	
624	R61 028 243	W	Two way valve coil	SQ-A2520D-000291	1	1	1	1	1	1	P472084X01	<SV5b>	
625	R63 046 232	G	Solenoid valve	FD2A77	2	2	2	2	2	2	P631312X01	<SV1a,SV9>	
626	R61 029 243	G	Solenoid valve coil	FQ-D808	2	2	2	2	2	2	P472086X01	<SV1a,SV9>	
627	R63 001 921	G	Solenoid valve	VPV-603DQ3	1	1	1	1	1	1	P631295X01	<SV2>	
628	R61 011 243	G	Solenoid valve coil	VPV-MOQ540UA1	1	1	1	1	1	1	P472047X01	<SV2>	
629	R63 R34 401	G	Linear expansion valve	CAM-B35YGMD-2	1	1	1	1	1	1	P632416X01	<LEV1>	
630	R63 011 401	G	Linear expansion valve coil	CAM-MD12MD-123	1	1	1	1	1	1	P472059X02	<LEV1>	
631	R61 036 401	G	Linear expansion valve	PAM-BBOYGMD-1	2	2	2	2	2	2	P632504X01	<LEV2a,LEV2b>	
632	R61 022 243	G	Linear expansion valve coil	PAM-MD12MD-3	1	1	1	1	1	1	P472061X02	<LEV2a>	
633	R61 093 401	G	Linear expansion valve coil	PAM-MD12MD-9	1	1	1	1	1	1	P472091X01	<LEV2b>	Chg.
634	R63 Y11 208	G	Pressure switch	ACB-1UB28W	1	1	1	1	1	1	P426320X01	<63H1>	
635	R63 051 288	G	Pressure sensor	HP	1	1	1	1	1	1	KB00F899G33	<63HS1>	
636	R61 069 288	G	Pressure sensor	LP	1	1	1	1	1	1	KB00F899G45	<63LS>	
637	R61 060 200	G	Thermistor		5	5	5	5	5	5	P418065X01	<TH2,TH3,TH5,TH6,TH7>	
638	R63 911 202	G	Thermistor		1	1	1	1	1	1	P425416X02	<TH4>	
639	R61 001 310	G	Sensor holder		1	1	1	1	1	1	KB25B471H03		
640	R63 852 860	G	Rubber mount		4	4	4	4	4	4	W897574H01		

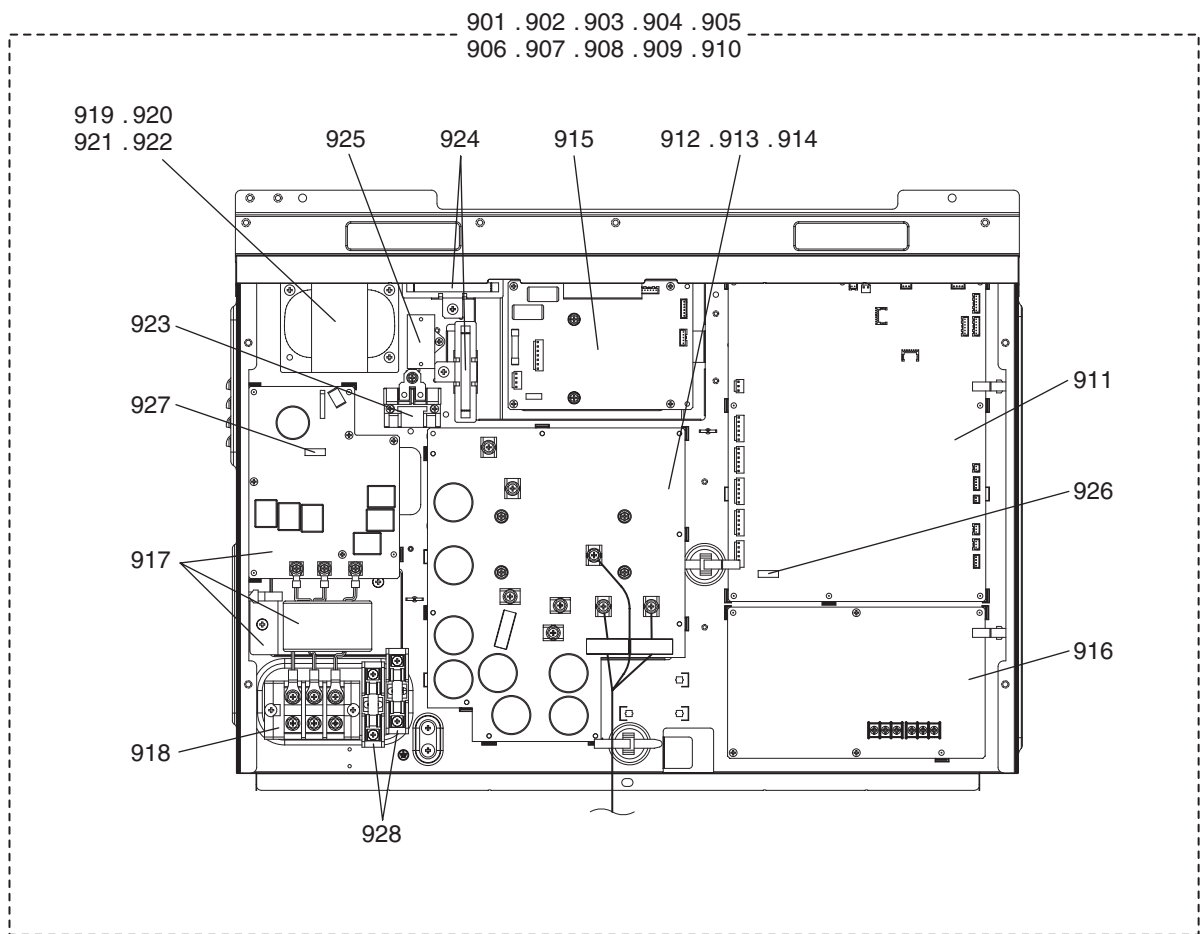
PUHY-P120,P144,P168TLMU-A(-BS)
 PUHY-P120,P144,P168YLMU-A(-BS)

FUNCTIONAL PARTS (3)

No.	Part No.	G : RoHS Apply Only W : RoHS Apply by Running Change		Spec.	PUHY-P120YLMU-A	PUHY-P120TLMU-A-BS	PUHY-P144YLMU-A	PUHY-P144TLMU-A-BS	PUHY-P168YLMU-A	PUHY-P168TLMU-A-BS	Dwg. No.	Notes for the models	Revision info.
			Part Name										
601	R69 128 478	G	Scroll compressor	HNB83FC-U							EP10136B08		
602	R69 125 478	G	Scroll compressor	HNB84FC-U							EP10126B06		
603	R69 129 478	G	Scroll compressor	HNB83FC-YE	1	1	1	1			EP10136B09		
604	R69 118 478	G	Scroll compressor	HNB84FC-YE					1	1	EP10126B04		
605	R61 931 480	G	Heat exchanger L	XL	1		1			1	KD00U696G01		
606	R61 932 480	G	Heat exchanger L	BS XL		1		1		1	KD00U696G02		
607	R61 933 480	G	Heat exchanger R	XL	1		1			1	KD00U695G01		
608	R61 934 480	G	Heat exchanger R	BS XL		1		1		1	KD00U695G02		
609	R61 089 484	G	Accumulator assy		1		1			1	KB54B479G31		
610	R61 088 484	G	Accumulator assy	BS		1		1		1	KB54B479G32		
611	R61 044 487	G	Oil separator assy		1	1	1	1	1	1	KJ00L830G02		
612	R61 009 410	G	Ball valve	SBV-JA10YGME-3	1	1	1	1	1	1	P636358X01	<BV1>	
613	R61 004 540	G	Valve	VSAMH4SSCM-LA1	1	1	1	1	1	1	P636345X01	<BV2>	
614	R61 008 454	G	Strainer	25.4D	1	1	1	1	1	1	KB48K250G01	<ST1>	
615	R63 Y03 454	G	Strainer	17.6D	1	1	1	1	1	1	W893281G01	<ST2>	
616	R63 R34 413	G	Check joint L		2	2	2	2	2	2	P666004X02	<(HP)CJ1,(LP)CJ2>	
617	R61 014 425	G	Capillary tube assy		1	1	1	1	1	1	KB49M503G01	<CP1>	
618	R63 021 425	G	Capillary tube		1	1	1	1	1	1	KD49D414G01	<CP2>	
619	R61 005 418	G	Check valve	YAV-P11Y5HMD-1	1	1	1	1	1	1	P633133X01	<CV1>	
620	R61 013 403	G	Four way valve	STF-H0731	2	2	2	2	2	2	P633130X01	<21S4a,21S4c>	
621	R61 014 403	G	Four way valve	STF-H0421	1	1	1	1	1	1	P633131X01	<21S4b>	
622	R61 040 243	G	Four way valve coil	STF-H01AQ1969UA1	3	3	3	3	3	3	P472095X01	<21S4a,21S4b,21S4c>	
623	R63 004 421	G	Two way valve	VR43202	1	1	1	1	1	1	P633129X02	<SV5b>	
624	R61 028 243	W	Two way valve coil	SQ-A2520D-000291	1	1	1	1	1	1	P472084X01	<SV5b>	
625	R63 046 232	G	Solenoid valve	FD2A77	2	2	2	2	2	2	P631312X01	<SV1a,SV9>	
626	R61 029 243	G	Solenoid valve coil	FQ-D808	2	2	2	2	2	2	P472086X01	<SV1a,SV9>	
627	R63 001 921	G	Solenoid valve	VPV-603DQ3	1	1	1	1	1	1	P631295X01	<SV2>	
628	R61 011 243	G	Solenoid valve coil	VPV-MOQA540UA1	1	1	1	1	1	1	P472047X01	<SV2>	
629	R63 R34 401	G	Linear expansion valve	CAM-B35YGMD-2	1	1	1	1	1	1	P632416X01	<LEV1>	
630	R63 011 401	G	Linear expansion valve coil	CAM-MD12MD-123	1	1	1	1	1	1	P472059X02	<LEV1>	
631	R61 036 401	G	Linear expansion valve	PAM-BBOYGMD-1	2	2	2	2	2	2	P632504X01	<LEV2a,LEV2b>	
632	R61 022 243	G	Linear expansion valve coil	PAM-MD12MD-3	1	1	1	1	1	1	P472061X02	<LEV2a>	
633	R61 093 401	G	Linear expansion valve coil	PAM-MD12MD-9	1	1	1	1	1	1	P472091X01	<LEV2b>	Chg.
634	R63 Y11 208	G	Pressure switch	ACB-1UB28W	1	1	1	1	1	1	P426320X01	<63H1>	
635	R63 051 288	G	Pressure sensor	HP	1	1	1	1	1	1	KB00F899G33	<63HS1>	
636	R61 069 288	G	Pressure sensor	LP	1	1	1	1	1	1	KB00F899G45	<63LS>	
637	R61 060 200	G	Thermistor		5	5	5	5	5	5	P418065X01	<TH2,TH3,TH5,TH6,TH7>	
638	R63 911 202	G	Thermistor		1	1	1	1	1	1	P425416X02	<TH4>	
639	R61 001 310	G	Sensor holder		1	1	1	1	1	1	KB25B471H03		
640	R63 852 860	G	Rubber mount		4	4	4	4	4	4	W897574H01		

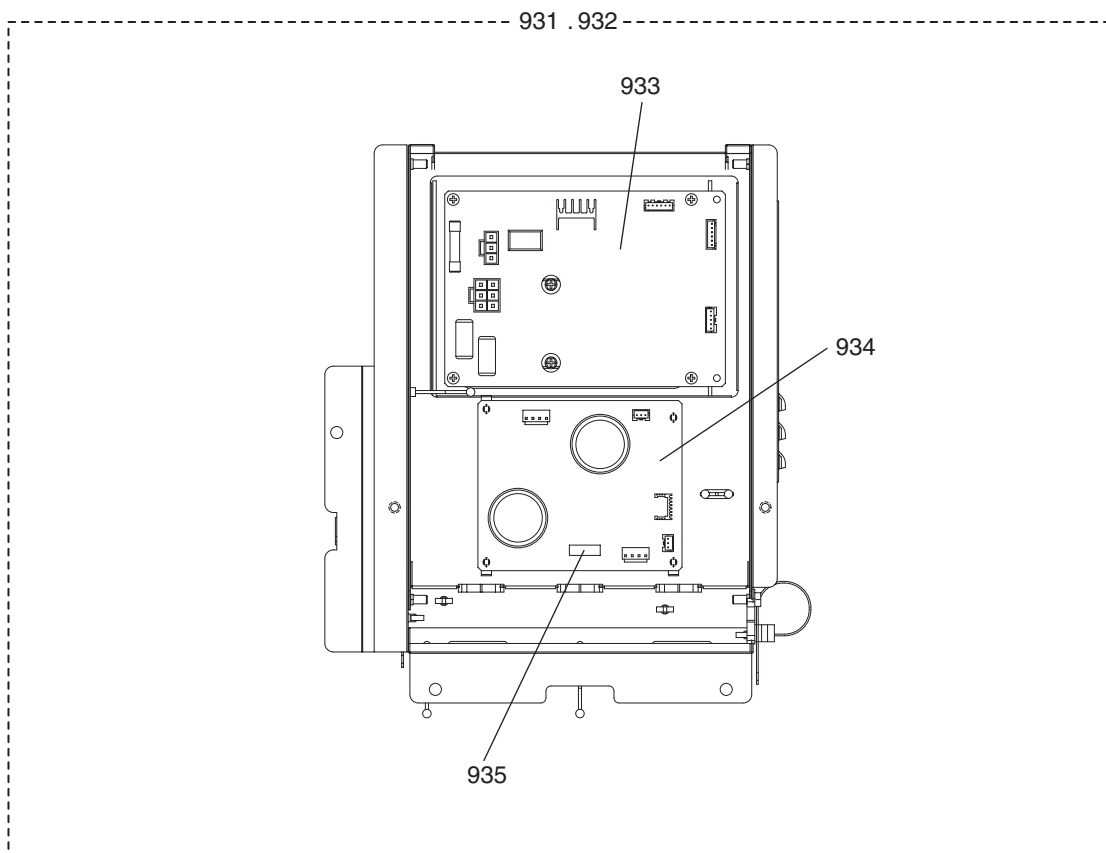






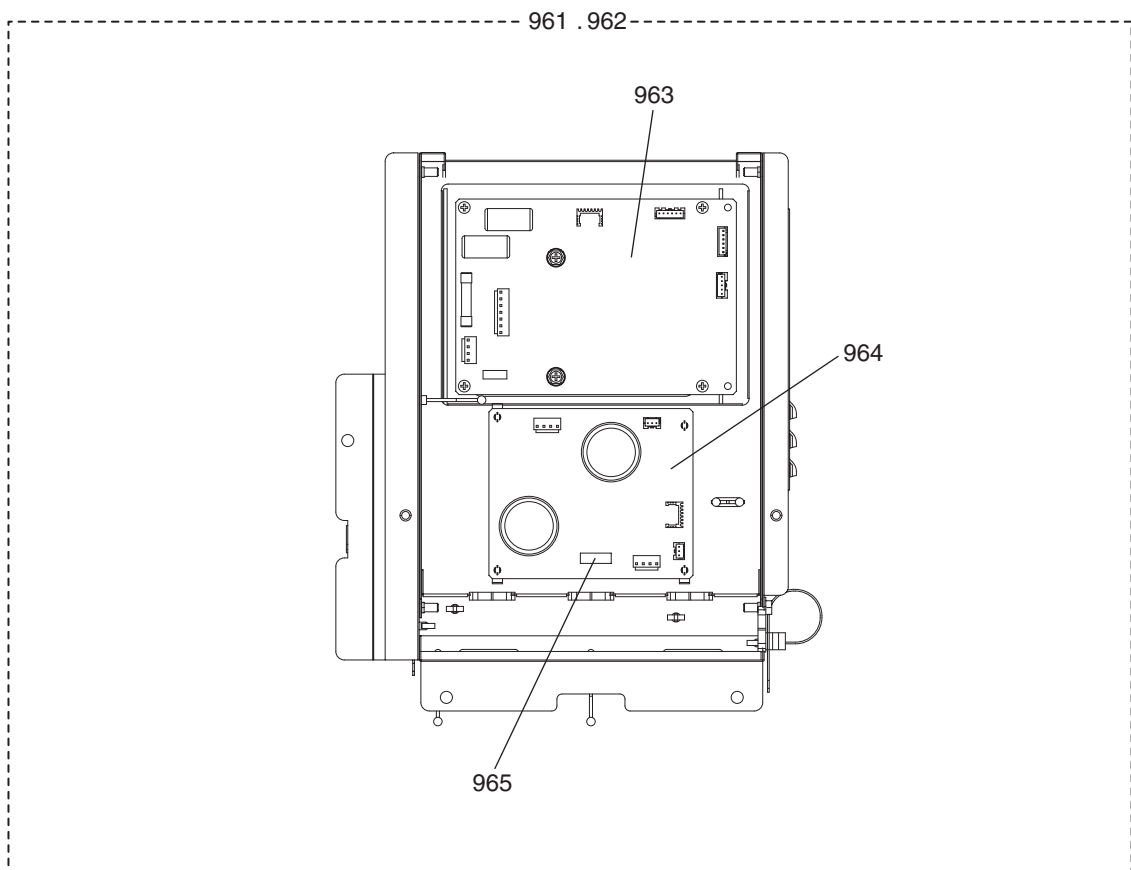
PUHY-P120TLMU-A(-BS)
PUHY-P144TLMU-A(-BS)
PUHY-P168TLMU-A(-BS)

FAN BOX PARTS (1)



PUHY-P120YLMU-A(-BS)
PUHY-P144YLMU-A(-BS)
PUHY-P168YLMU-A(-BS)

FAN BOX PARTS (2)



mitsubishi
electric
corporation

BWE01502A(20150531)