

# SERVICE PARTS LIST FOR MITSUBISHI ELECTRIC PACKAGED AIR-CONDITIONERS

Series : PUHY-P·Z(S)KMU-A(-BS)

For use with the R410A

REVISED

Dec. 2020

BWE01524B

## INDEX

PUHY-P72ZKMU-A

PUHY-P72ZKMU-A-BS

PUHY-P96ZKMU-A

PUHY-P96ZKMU-A-BS

PUHY-P120ZKMU-A

PUHY-P120ZKMU-A-BS

PUHY-P144ZKMU-A

PUHY-P144ZKMU-A-BS

Part information update day : 2020/12/22

Please change the old catalog (issued Sept. 2019, No.BWE01524A) to this new catalog.  
Content of revision : Some of parts are changed.



## The Package name list

**PUHY-P168ZSKMU-A(-BS)** [PUHY-P72ZKMU-A (-BS)+PUHY-P96ZKMU-A (-BS)]

**PUHY-P192ZSKMU-A(-BS)** [PUHY-P72ZKMU-A (-BS)+PUHY-P120ZKMU-A (-BS)]

**PUHY-P216ZSKMU-A(-BS)** [PUHY-P96ZKMU-A (-BS)+PUHY-P120ZKMU-A (-BS)]

**PUHY-P240ZSKMU-A(-BS)** [PUHY-P120ZKMU-A (-BS)+PUHY-P120ZKMU-A (-BS)]

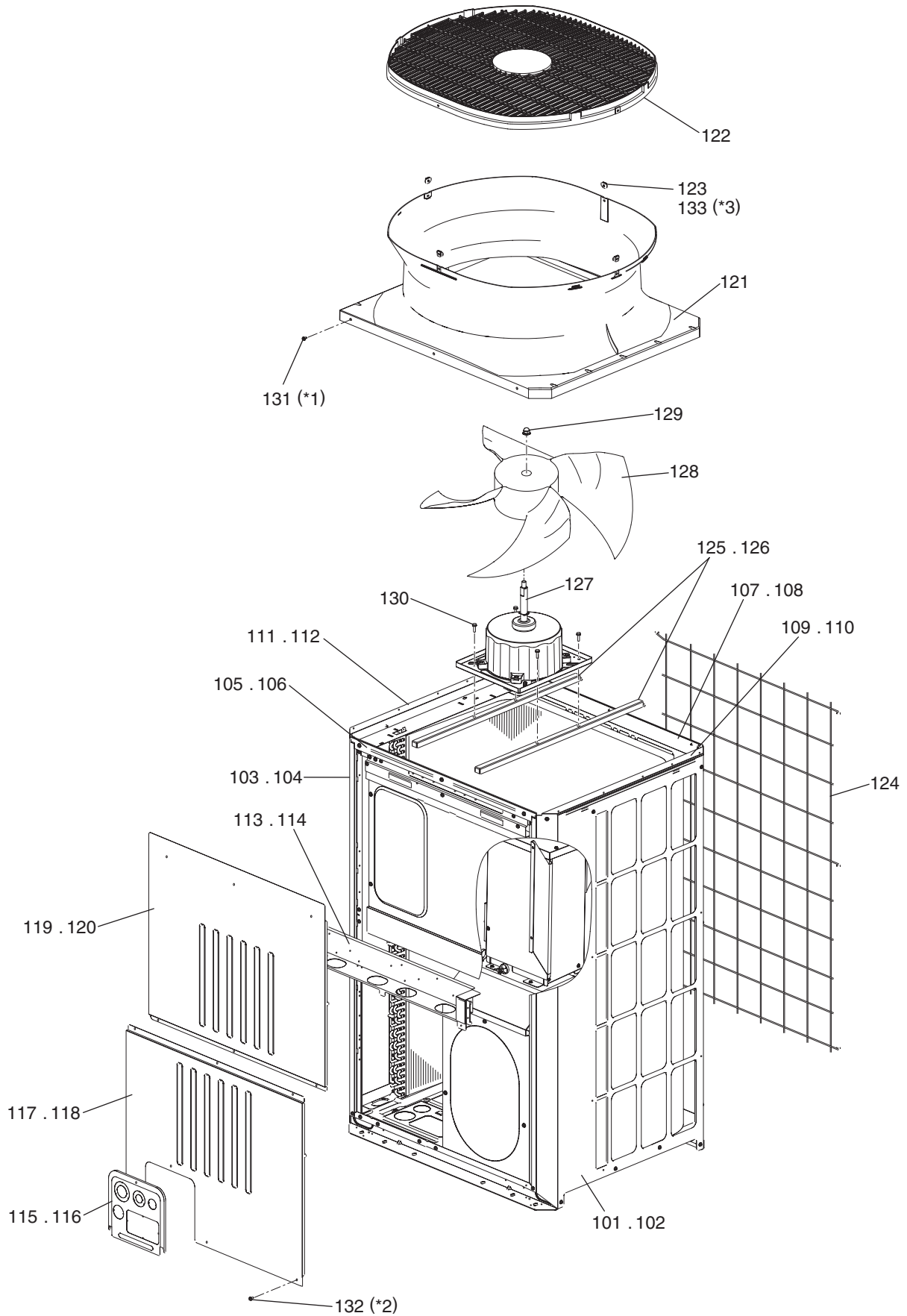
**PUHY-P264ZSKMU-A(-BS)** [PUHY-P72ZKMU-A (-BS)+PUHY-P72ZKMU-A (-BS)+PUHY-P120ZKMU-A (-BS)]

**PUHY-P288ZSKMU-A(-BS)** [PUHY-P72ZKMU-A (-BS)+PUHY-P96ZKMU-A (-BS)+PUHY-P120ZKMU-A (-BS)]

**PUHY-P312ZSKMU-A(-BS)** [PUHY-P72ZKMU-A (-BS)+PUHY-P120ZKMU-A (-BS)+PUHY-P120ZKMU-A (-BS)]

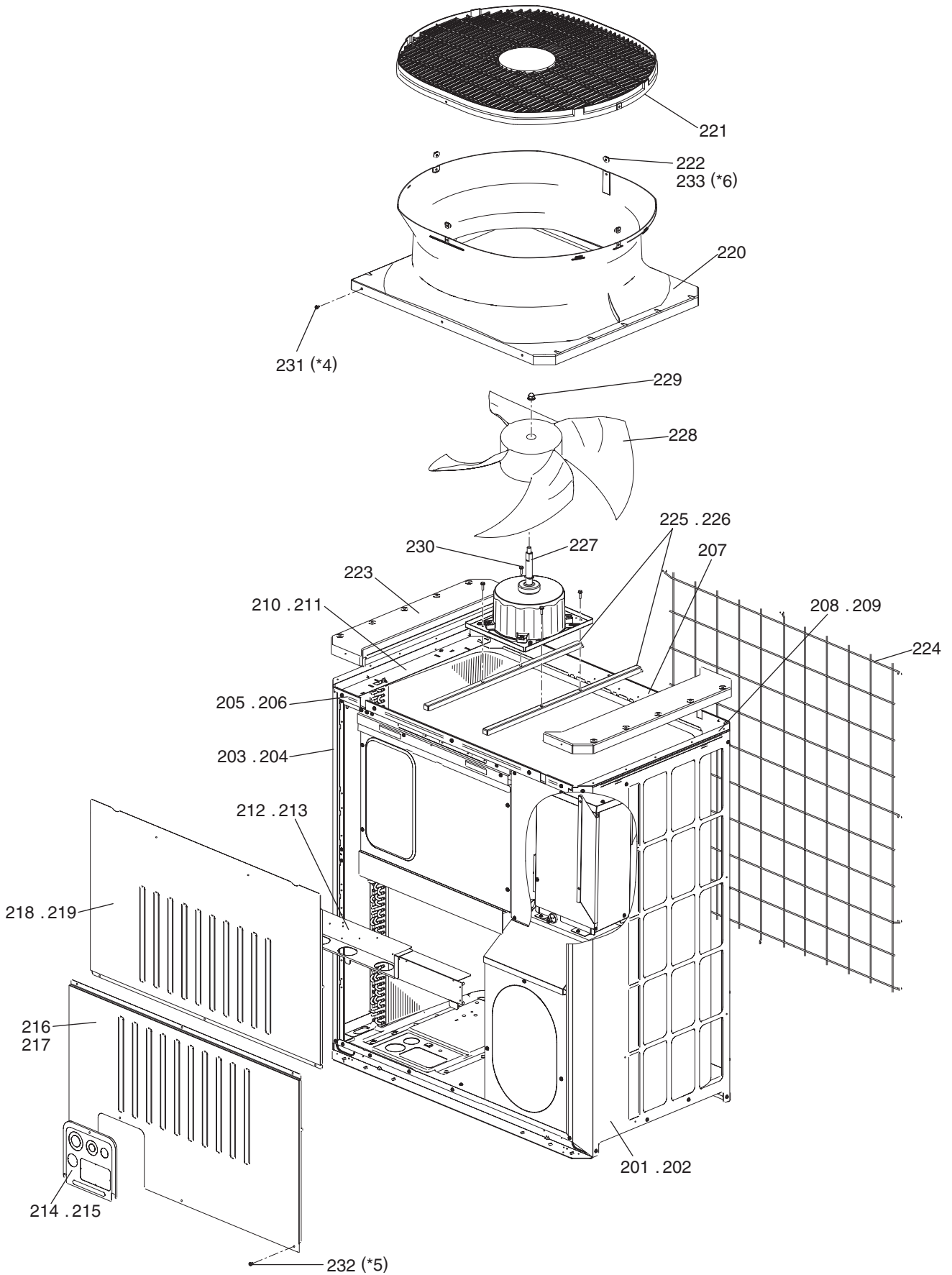
**PUHY-P336ZSKMU-A(-BS)** [PUHY-P96ZKMU-A (-BS)+PUHY-P120ZKMU-A (-BS)+PUHY-P120ZKMU-A (-BS)]

**PUHY-P360ZSKMU-A(-BS)** [PUHY-P120ZKMU-A (-BS)+PUHY-P120ZKMU-A (-BS)+PUHY-P120ZKMU-A (-BS)]



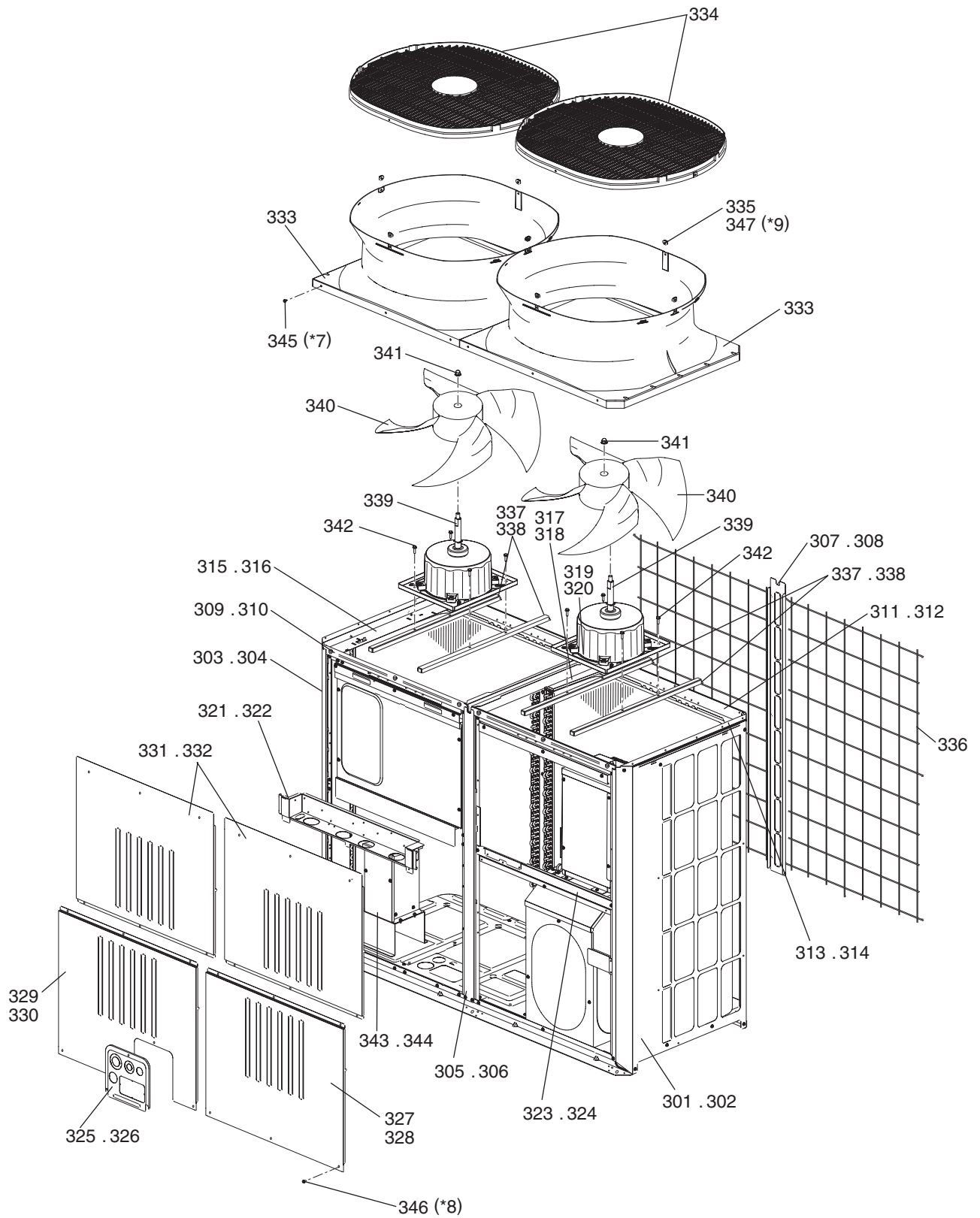
\*1 18 WFT Screws (part No.131)  
\*2 124 H Screws (part No.132)  
\*3 4 WFT Screws (part No.133)

No.	Part No.	Part Name	Spec.	PUHY-P72ZKMU-A	PUHY-P72ZKMU-A-BS					Dwg. No.	Notes for the models	Revision info.
101	R61 080 661	Panel R		1						KS00C722G01		
102	R61 081 661	Panel R	BS		1					KS00C722G02		
103	R61 082 661	Panel L		1						KS00C721G01		
104	R61 083 661	Panel L	BS		1					KS00C721G02		
105	R61 001 161	Frame F		1						KD02G738H02		
106	R61 005 161	Frame F	BS		1					KD02G738G07		
107	R61 008 160	Frame assy B		1						KJ00C354G01		
108	R61 009 160	Frame assy B	BS		1					KJ00C354G02		
109	R61 096 162	Frame assy LR		1						KJ00C486G03		
110	R61 097 162	Frame assy LR	BS		1					KJ00C486G04		
111	R61 098 162	Frame assy L		1						KJ00C488G03		
112	R61 099 162	Frame assy L	BS		1					KJ00C488G04		
113	R63 077 162	Frame assy M		1						KD00L159G07		
114	R63 080 162	Frame assy M	BS		1					KD00L159G08		
115	R61 120 690	Piping cover		1						KB02L912G07		
116	R61 121 690	Piping cover	BS		1					KB02L912G08		
117	R61 208 651	Panel FB		1						KB02J835H06		
118	R61 209 651	Panel FB	BS		1					KB02J835G10		
119	R61 177 651	Panel FU		1						KB02J839H01		
120	R61 178 651	Panel FU	BS		1					KB02J839G02		
121	R61 004 119	Bell mouth		1	1					KB25A368G01		
122	R11 003 009	Fan guard		1	1					KB25V019G01		
123	R61 009 669	Plate fan guard		4	4					KD02D205H02		
124	R63 008 611	Fin guard B		1	1					KB07N273G01		
125	R61 016 140	Base fan		2						KD02D026H01		
126	R61 017 140	Base fan	BS		2					KD02D026G04		
127	R61 429 220	Motor	920W 415V	1	1					KB61A888G04		
128	R61 001 300	Fan		1	1					KB25A009H05		
129	R63 4H6 122	Box nut	M12 CH	1	1					P552000X01		
130	R63 014 087	Upset screw	M6 x 10	4	4					P516047X01		
131	R63 006 087	WFT screw	M5 x 12 (30pcs)	1	1					KB00H418G01	*1	
132	R61 048 087	H screw	M5 x 10 KNURLED (30pcs)	5	5					KB00H418G14	*2	
133	R63 029 087	WFT screw	M5 x 16 (10pcs)	1	1					KD00H026G01	*3	



- \*4 26 WFT Screws (part No.231)
- \*5 126H Screws (part No.232)
- \*6 4 WFT Screws (part No.233)

No.	Part No.	Part Name	Spec.	PUHY-P96ZKMU-A	PUHY-P96ZKMU-A-BS					Dwg. No.	Notes for the models	Revision info.
201	R61 080 661	Panel R		1						KS00C722G01		
202	R61 081 661	Panel R	BS		1					KS00C722G02		
203	R61 082 661	Panel L		1						KS00C721G01		
204	R61 083 661	Panel L	BS		1					KS00C721G02		
205	R61 003 161	Frame F		1						KD02G739H02		
206	R61 006 161	Frame F	BS		1					KD02G739G07		
207	R61 124 162	Frame assy B		1	1					KJ00D419G02		
208	R61 096 162	Frame assy LR		1						KJ00C486G03		
209	R61 097 162	Frame assy LR	BS		1					KJ00C486G04		
210	R61 098 162	Frame assy L		1						KJ00C488G03		
211	R61 099 162	Frame assy L	BS		1					KJ00C488G04		
212	R61 125 162	Frame assy M		1						KD00L235G07		
213	R61 084 162	Frame assy M	BS		1					KD00L235G05		
214	R61 120 690	Piping cover		1						KB02L912G07		
215	R61 121 690	Piping cover	BS		1					KB02L912G08		
216	R61 210 651	Panel FB		1						KB02J836H03		
217	R61 211 651	Panel FB	BS		1					KB02J836G05		
218	R61 185 651	Panel FU		1						KB02J840H01		
219	R61 186 651	Panel FU	BS		1					KB02J840G02		
220	R61 004 119	Bell mouth		1	1					KB25A368G01		
221	R11 003 009	Fan guard		1	1					KB25V019G01		
222	R61 009 669	Plate fan guard		4	4					KD02D205H02		
223	R61 008 118	Fan guard cover		2	2					KB25J827G01		
224	R61 009 611	Fin guard B		1	1					KB07N274G01		
225	R61 016 140	Base fan		2						KD02D026H01		
226	R61 017 140	Base fan	BS		2					KD02D026G04		
227	R61 429 220	Motor	920W 415V	1	1					KB61A888G04		
228	R61 001 300	Fan		1	1					KB25A009H05		
229	R63 4H6 122	Box nut	M12 CH	1	1					P552000X01		
230	R63 014 087	Upset screw	M6 x 10	4	4					P516047X01		
231	R63 006 087	WFT Screw	M5 x 12 (30pcs)	1	1					KB00H418G01	*4	
232	R61 048 087	H Screw	M5 x 10 KNURLED (30pcs)	5	5					KB00H418G14	*5	
233	R63 029 087	WFT Screw	M5 x 16 (10pcs)	1	1					KD00H026G01	*6	



\*7 36 WFT Screws (part No.345)

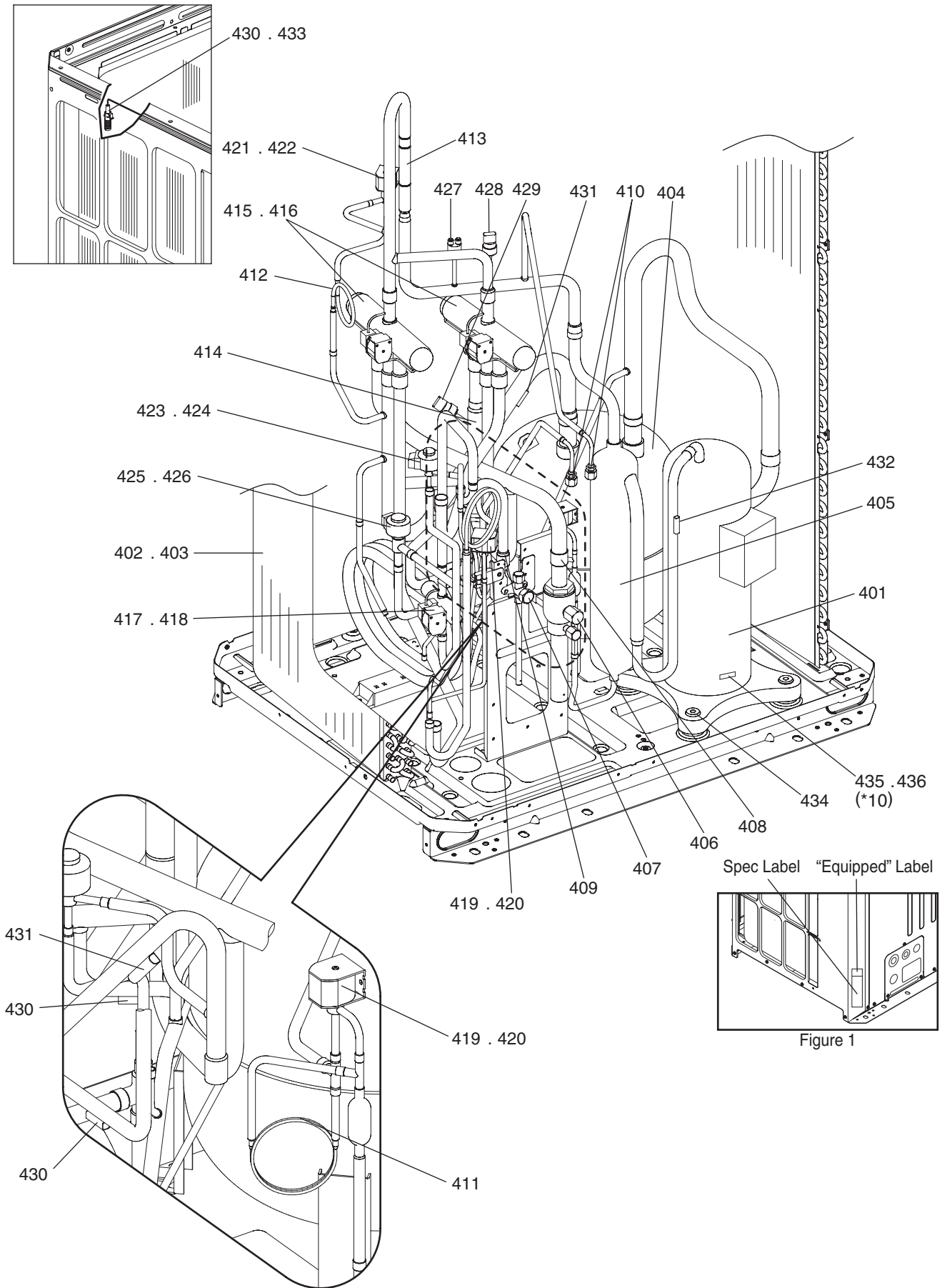
\*8 169 H Screws (part No.346)

\*9 8 W FT Screws (part No.347)

No.	Part No.	Part Name	Spec.	PUHY-P120ZKMU-A	PUHY-P120ZKMU-A-BS	PUHY-P144ZKMU-A	PUHY-P144ZKMU-A-BS	Dwg. No.	Notes for the models	Revision info.
301	R61 080 661	Panel R		1		1		KS00C722G01		
302	R61 081 661	Panel R	BS		1		1	KS00C722G02		
303	R61 082 661	Panel L		1		1		KS00C721G01		
304	R61 083 661	Panel L	BS		1		1	KS00C721G02		
305	R61 022 626	Pillar assy MF		1		1		KD00R845G09		
306	R61 023 626	Pillar assy MF	BS		1		1	KD00R845G10		
307	R61 030 626	Pillar MB		1		1		KD02M109G01		
308	R61 031 626	Pillar MB	BS		1		1	KD02M109G02		
309	R61 061 162	Frame assy F		1		1		KD00L182G03		
310	R61 094 162	Frame assy F	BS		1		1	KD00L182G07		
311	R61 012 160	Frame assy B		1		1		KJ00C487G01		
312	R61 013 160	Frame assy B	BS		1		1	KJ00C487G02		
313	R61 096 162	Frame assy LR		1		1		KJ00C486G03		
314	R61 097 162	Frame assy LR	BS		1		1	KJ00C486G04		
315	R61 098 162	Frame assy L		1		1		KJ00C488G03		
316	R61 099 162	Frame assy L	BS		1		1	KJ00C488G04		
317	R61 012 499	Plate HEX assy		1		1		KJ00C692G01		
318	R61 013 499	Plate HEX assy	BS		1		1	KJ00C692G02		
319	R61 072 162	Frame MT		1		1		KB02J833H01		
320	R61 073 162	Frame MT	BS		1		1	KB02J833G01		
321	R63 087 162	Frame M assy		1		1		KD00L159G09		
322	R63 088 162	Frame M assy	BS		1		1	KD00L159G10		
323	R61 058 162	Frame MR		1		1		KD02G743H04		
324	R61 059 162	Frame MR	BS		1		1	KD02G743G02		
325	R61 120 690	Piping cover		1		1		KB02L912G07		
326	R61 121 690	Piping cover	BS		1		1	KB02L912G08		
327	R61 212 651	Panel FBR		1		1		KB02J838H04		
328	R61 213 651	Panel FBR	BS		1		1	KB02J838G06		
329	R61 182 651	Panel FBL		1		1		KB02J837H02		
330	R61 183 651	Panel FBL	BS		1		1	KB02J837G04		
331	R61 177 651	Panel FU		2		2		KB02J839H01		
332	R61 178 651	Panel FU	BS		2		2	KB02J839G02		
333	R61 005 119	Bell mouth		2	2	2	2	KB25A367G01		
334	R11 003 009	Fan guard		2	2	2	2	KB25V019G01		
335	R61 009 669	Plate Fan guard		8	8	8	8	KD02D205H02		
336	R61 010 611	Fin guard B		2	2	2	2	KB07N272G01		
337	R61 016 140	Base fan		4		4		KD02D026H01		
338	R61 017 140	Base fan	BS		4		4	KD02D026G04		
339	R61 429 220	Motor	920W 415V	2	2	2	2	KB61A888G04		
340	R61 001 300	Fan		2	2	2	2	KB25A009H05		
341	R63 4H6 122	Box nut	M12 CH	2	2	2	2	P552000X01		
342	R63 014 087	Upset Screw	M6 x 10	8	8	8	8	P516047X01		
343	R61 043 260	Transformer assy		1		1		KS00C755G03		
344	R61 044 260	Transformer assy	BS		1		1	KS00C755G04		
345	R63 006 087	WFT Screw	M5 x 12 (30pcs)	2	2	2	2	KB00H418G01	*7	







\*10 If "Equipped" label as shown in Figure 1 is attached on the unit, order the Sensor assy part No.435. If it is not attached, order the Sensor kit part No. 436.

No.	Part No.	Part Name	Spec.	PUHY-P72ZKMU-A		PUHY-P72ZKMU-A-BS		Dwg. No.	Notes for the models	Revision info.
401	R69 197 478	Scroll compressor	ENB62FC3-YE	1	1			EP10132B24		
402	R61 L37 480	Heat exchanger	3L	1				KD01R785G03		
403	R61 A24 480	Heat exchanger	3L BS		1			KD01R785G04		
404	R61 042 484	Accumulator assy		1	1			KB54B478G19		
405	R61 044 487	Oil separator assy		1	1			KJ00L830G02		
406	R61 009 410	Ball valve	SBV-JA10YGME-3	1	1			P636358X01	<BV1>	
407	R61 003 540	Valve	VSAMH3SSCM-LA1	1	1			P636346X01	<BV2>	
408	R61 008 454	Strainer	25.4D	1	1			KB48K250G02	<ST1>	Chg.
409	R63 Y03 454	Strainer	17.6D	1	1			W893281G01	<ST2>	
410	R61 004 413	Check joint L		2	2			P666013X01	<(HP)CJ1,(LP)CJ2>	
411	R63 002 425	Capillary tube assy		1	1			KB49F229G01	<CP1>	
412	R63 021 425	Capillary tube		1	1			KD49D414G01	<CP2>	
413	R63 R43 418	Check valve	YCV11-007	1	1			P639165X01	<CV1>	Chg.
414	R61 072 418	Check valve	BCV-1807DYQ2	1	1			P639218X02	<CV2>	
415	R63 Y05 154	Four way valve	STF-0731G	2	2			P633119X01	<21S4a,21S4b>	
416	R61 Y21 243	Four way valve coil	STF-01AQ505UA1	2	2			P472028X01	<21S4a,21S4b>	
417	R63 004 421	Two way valve	VR43202	1	1			P633129X02	<SV5b>	
418	R61 028 243	Two way valve coil	SQ-A2520D-000291	1	1			P472084X01	<SV5b>	
419	R63 046 232	Solenoid valve	FDFA277	2	2			P631312X01	<SV1a,SV9>	
420	R61 029 243	Solenoid valve coil	FQ-D808	2	2			P472086X01	<SV1a,SV9>	
421	R63 001 921	Solenoid valve	VPV-603DQ3	1	1			P631295X01	<SV2>	
422	R61 011 243	Solenoid valve coil	VPV-MOAQ540UA1	1	1			P472047X01	<SV2>	
423	R63 4H6 401	Linear expansion valve	CAM-B35YGMD-3	1	1			P632444X01	<LEV1>	
424	R63 011 401	Solenoid valve coil	CAM-MD12MD-123	1	1			P472059X02	<LEV1>	
425	R61 107 401	Linear expansion valve	PAM-BB0YGMD-2	1	1			KR50C486H01	<LEV2>	
426	R61 022 243	Solenoid valve coil	PAM-MD12MD-3	1	1			P472061X02	<LEV2>	
427	R61 056 208	Pressure switch	ACB-1UB28W	1	1			P426320X02	<63H1>	
428	R61 133 288	Pressure sensor	HP	1	1			KB00H904G20	<63HS1>	Chg.
429	R61 134 288	Pressure sensor	LP	1	1			KB00H904G21	<63LS>	Chg.
430	R61 060 200	Thermistor		3	3			P418065X01	<TH2,TH3,TH7>	
431	R63 172 200	Thermistor		2	2			P418098X01	<TH5,TH6>	
432	R63 911 202	Thermistor		1	1			P425416X02	<TH4>	
433	R61 001 310	Sensor holder		1	1			KB25B471G02		
434	R63 852 860	Rubber mount		4	4			W897574H01	For compressor	
435	R61 076 287	Sensor assy	Y ZKMU	1	1			KJ78M622G01	*10 <TH15>	Add.
436	R61 074 287	Sensor kit	Y 96 ZKMU	1	1			KJ00K047G23	*10 <TH15>	Add.

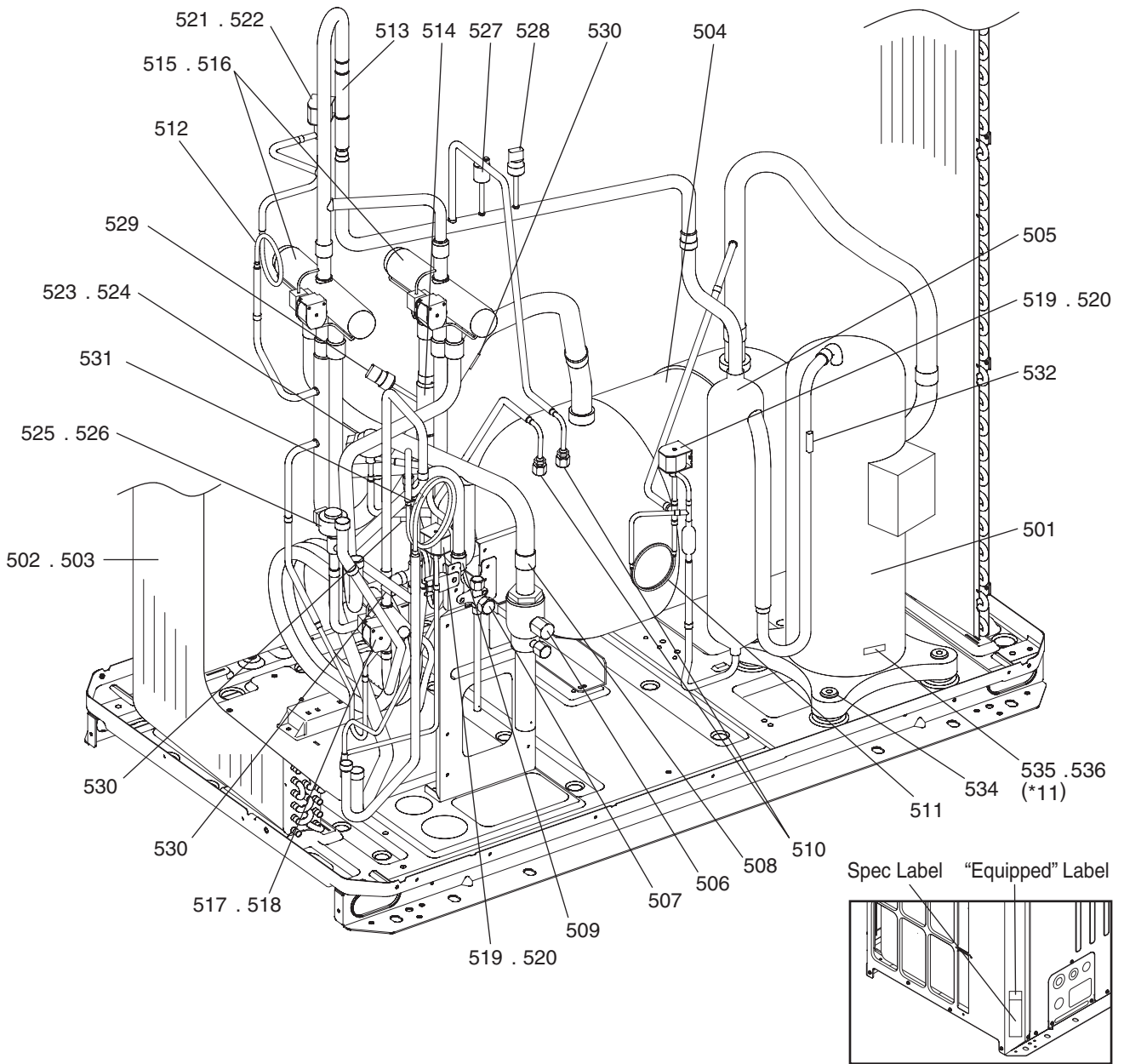
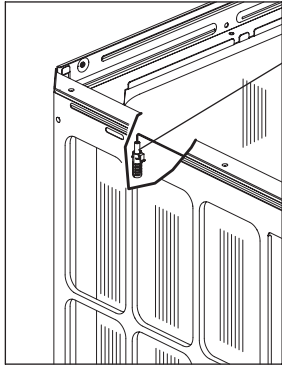
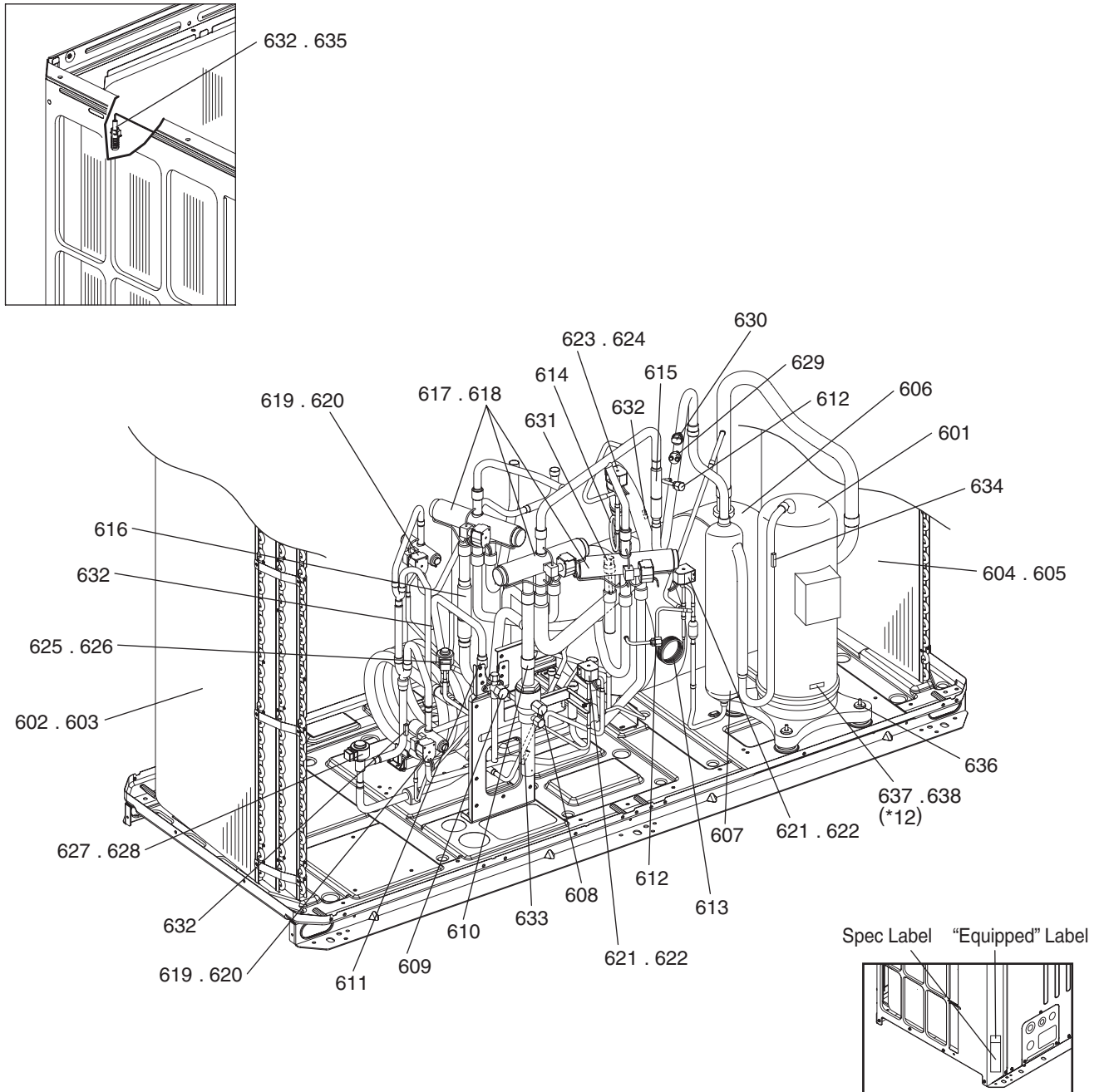


Figure 1

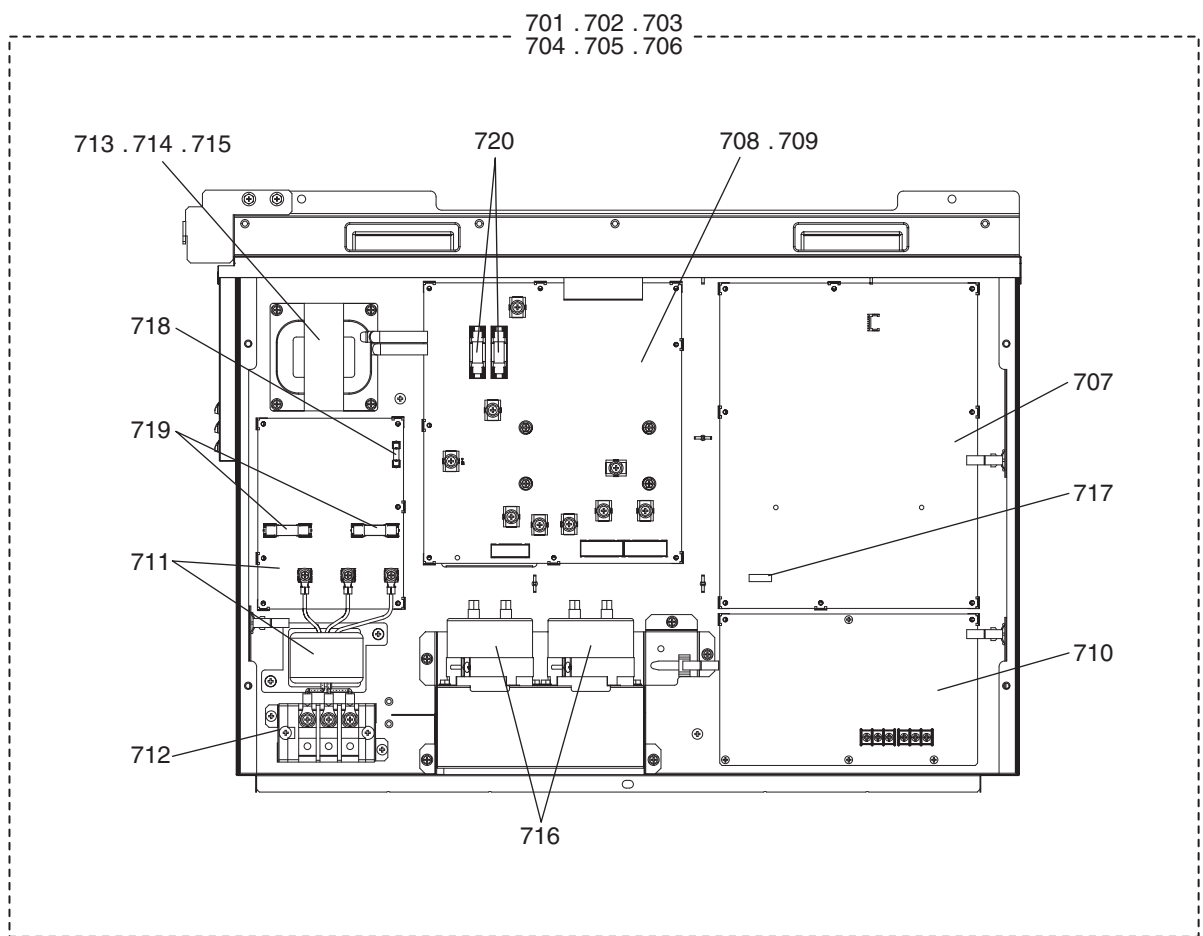
\*11 If "Equipped" label as shown in Figure 1 is attached on the unit, order the Sensor assy part No.535. If it is not attached, order the Sensor kit part No. 536.

No.	Part No.	Part Name	Spec.	PUHY-P96ZKMU-A		PUHY-P96ZKMU-A-BS		Dwg. No.	Notes for the models	Revision info.
501	R69 197 478	Scroll compressor	ENB62FC3-YE	1	1			EP10132B24		
502	R61 L30 480	Heat exchanger	3L	1				KD01R776G07		
503	R61 A26 480	Heat exchanger	3L BS		1			KD01R776G08		
504	R61 090 484	Accumulator assy		1	1			KB54B479G53		
505	R61 044 487	Oil separator assy		1	1			KJ00L830G02		
506	R61 009 410	Ball valve	SBV-JA10YGME-3	1	1			P636358X01	<BV1>	
507	R61 003 540	Valve	VSAMH3SSCM-LA1	1	1			P636346X01	<BV2>	
508	R61 008 454	Strainer	25.4D	1	1			KB48K250G02	<ST1>	Chg.
509	R63 Y03 454	Strainer	17.6D	1	1			W893281G01	<ST2>	
510	R61 004 413	Check joint L		2	2			P666013X01	<(HP)CJ1,(LP)CJ2>	
511	R63 002 425	Capillary tube assy		1	1			KB49F229G01	<CP1>	
512	R63 021 425	Capillary tube		1	1			KD49D414G01	<CP2>	
513	R63 R43 418	Check valve	YCV11-007	1	1			P639165X01	<CV1>	Chg.
514	R61 072 418	Check valve	BCV-1807DYQ2	1	1			P639218X02	<CV2>	
515	R63 Y05 154	Four way valve	STF-0731G	2	2			P633119X01	<21S4a,21S4b>	
516	R61 Y21 243	Four way valve coil	STF-01AQ505UA1	2	2			P472028X01	<21S4a,21S4b>	
517	R63 004 421	Two way valve	VR43202	1	1			P633129X02	<SV5b>	
518	R61 028 243	Two way valve coil	SQ-A2520D-000291	1	1			P472084X01	<SV5b>	
519	R63 046 232	Solenoid valve	FD2A77	2	2			P631312X01	<SV1a,SV9>	
520	R61 029 243	Solenoid valve coil	FQ-D808	2	2			P472086X01	<SV1a,SV9>	
521	R63 001 921	Solenoid valve	VPV-603DQ3	1	1			P631295X01	<SV2>	
522	R61 011 243	Solenoid valve coil	VPV-MOQA540UA1	1	1			P472047X01	<SV2>	
523	R63 4H6 401	Linear expansion valve	CAM-B35YGMD-3	1	1			P632444X01	<LEV1>	
524	R63 011 401	Solenoid valve coil	CAM-MD12MD-123	1	1			P472059X02	<LEV1>	
525	R61 107 401	Linear expansion valve	PAM-BBOYGMD-2	1	1			KR50C486H01	<LEV2>	
526	R61 022 243	Solenoid valve coil	PAM-MD12MD-3	1	1			P472061X02	<LEV2>	
527	R61 056 208	Pressure switch	ACB-1UB28W	1	1			P426320X02	<63H1>	
528	R61 133 288	Pressure sensor	HP	1	1			KB00H904G20	<63HS1>	Chg.
529	R61 134 288	Pressure sensor	LP	1	1			KB00H904G21	<63LS>	Chg.
530	R61 060 200	Thermistor		4	4			P418065X01	<TH2,TH3,TH5,TH7>	
531	R63 172 200	Thermistor		1	1			P418098X01	<TH6>	
532	R63 911 202	Thermistor		1	1			P425416X02	<TH4>	
533	R61 001 310	Sensor holder		1	1			KB25B471G02		
534	R63 852 860	Rubber mount		4	4			W897574H01	For compressor	
535	R61 076 287	Sensor assy	Y ZKMU	1	1			KJ78M622G01	*11 <TH15>	Add.
536	R61 074 287	Sensor kit	Y 96 ZKMU	1	1			KJ00K047G23	*11 <TH15>	Add.



\*12 If "Equipped" label as shown in Figure 1 is attached on the unit, order the Sensor assy part No.637. If it is not attached, order the Sensor kit part No. 638.

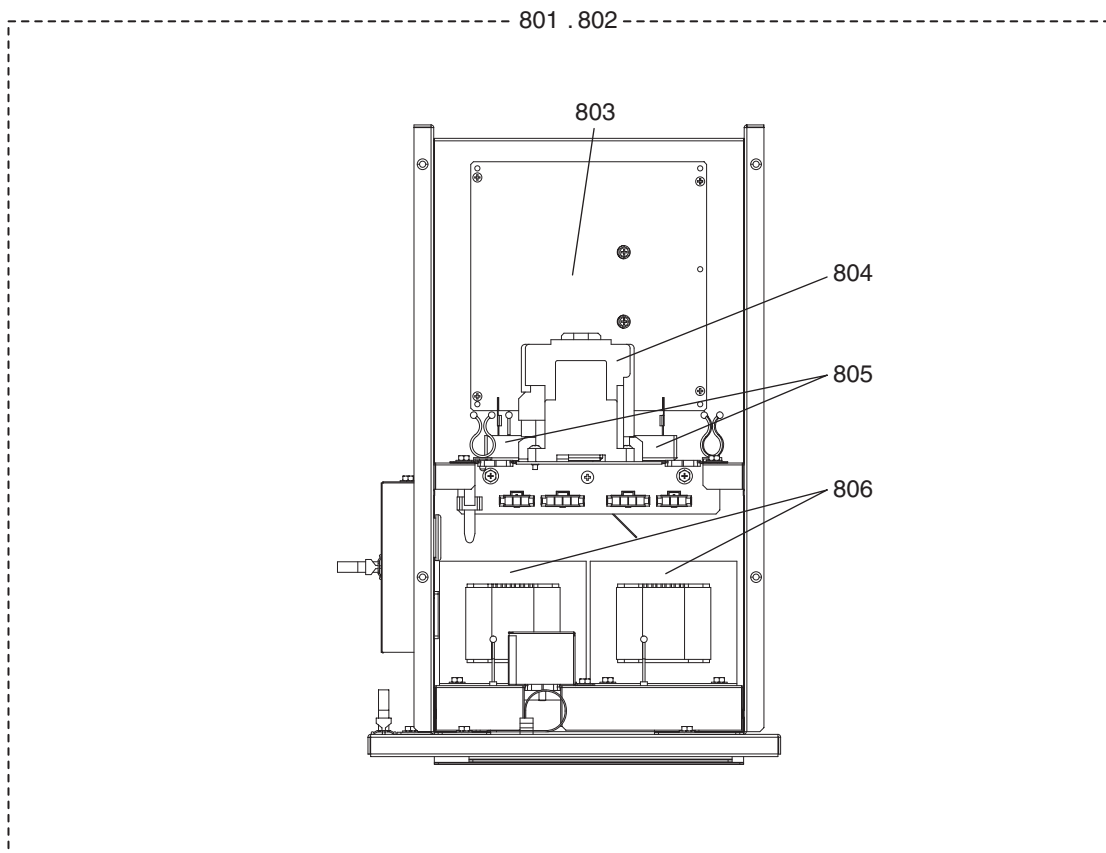
No.	Part No.	Part Name	Spec.	PUHY-P120ZKMU-A	PUHY-P120ZKMU-A+BS	PUHY-P144ZKMU-A	PUHY-P144ZKMU-A+BS	Dwg. No.	Notes for the models	Revision info.
601	R69 198 478	Scroll compressor	HNB83FC3-YE	1	1	1	1	EP10136B21		
602	R61 L29 480	Heat exchanger L	3L	1		1		KD01R771G03		
603	R61 A28 480	Heat exchanger L	3L BS		1		1	KD01R771G04		
604	R61 A29 480	Heat exchanger R	3L	1		1		KD01R885G03		
605	R61 A30 480	Heat exchanger R	3L BS		1		1	KD01R885G04		
606	R61 088 484	Accumulator assy		1	1	1	1	KB54B479G39		
607	R61 044 487	Oil separator assy		1	1	1	1	KJ00L830G02		
608	R61 009 410	Ball valve	SBV-JA10YGM-E-3	1	1	1	1	P636358X01	<BV1>	
609	R61 004 540	Valve	VSAMH4SSCM-LA1	1	1	1	1	P636345X01	<BV2>	
610	R61 008 454	Strainer	25.4D	1	1	1	1	KB48K250G02	<ST1>	Chg.
611	R63 Y03 454	Strainer	17.6D	1	1	1	1	W893281G01	<ST2>	
612	R63 R34 413	Check joint L		2	2	2	2	P666004X02	<(HP)CJ1,(LP)CJ2>	
613	R63 R55 425	Capillary tube assy		1	1	1	1	W905191G02	<CP1>	
614	R63 021 425	Capillary tube		1	1	1	1	KD49D414G01	<CP2>	
615	R63 R43 418	Check valve	YCV11-007	1	1	1	1	P639165X01	<CV1>	Chg.
616	R61 072 418	Check valve	BCV-1807DYQ2	1	1	1	1	P639218X02	<CV2>	
617	R63 Y05 154	Four way valve	STF-0731G	3	3	3	3	P633119X01	<21S4a,21S4b,21S4c>	
618	R61 Y21 243	Four way valve coil	STF-01AQ505UA1	3	3	3	3	P472028X01	<21S4a,21S4b,21S4c>	
619	R63 004 421	Two way valve	VR43202	2	2	2	2	P633129X02	<SV5b,SV5c>	
620	R61 028 243	Two way valve coil	SQ-A2520D-000291	2	2	2	2	P472084X01	<SV5b,SV5c>	
621	R63 046 232	Solenoid valve	FDF2A77	2	2	2	2	P631312X01	<SV1a,SV9>	
622	R61 029 243	Solenoid valve coil	FQ-D808	2	2	2	2	P472086X01	<SV1a,SV9>	
623	R63 001 921	Solenoid valve	VPV-603DQ3	1	1	1	1	P631295X01	<SV2>	
624	R61 011 243	Solenoid valve coil	VPV-MOQA540UA1	1	1	1	1	P472047X01	<SV2>	
625	R63 4H6 401	Linear expansion valve	CAM-B35YGM-D-3	1	1	1	1	P632444X01	<LEV1>	
626	R63 011 401	Solenoid valve coil	CAM-MD12MD-123	1	1	1	1	P472059X02	<LEV1>	
627	R61 107 401	Linear expansion valve	PAM-BBOYGM-D-2	1	1	1	1	KR50C486H01	<LEV2>	
628	R61 022 243	Solenoid valve coil	PAM-MD12MD-3	1	1	1	1	P472061X02	<LEV2>	
629	R61 056 208	Pressure switch	ACB-1UB28W	1	1	1	1	P426320X02	<63H1>	
630	R61 131 288	Pressure sensor	HP	1	1	1	1	KB00F899G33	<63HS1>	Chg.
631	R61 130 288	Pressure sensor	LP	1	1	1	1	KB00F899G13	<63LS>	Chg.
632	R61 060 200	Thermistor		4	4	4	4	P418065X01	<TH3,TH5,TH6,TH7>	
633	R63 172 200	Thermistor		1	1	1	1	P418098X01	<TH2>	
634	R63 911 202	Thermistor		1	1	1	1	P425416X02	<TH4>	
635	R61 001 310	Sensor holder		1	1	1	1	KB25B471G02		
636	R63 852 860	Rubber mount		4	4	4	4	W897574H01	For compressor	
637	R61 076 287	Sensor assy	Y ZKMU	1	1	1	1	KJ78M622G01	*12 <TH15>	Add.
638	R61 075 287	Sensor kit	Y 120 ZKMU	1	1	1	1	KJ00K047G24	*12 <TH15>	Add.



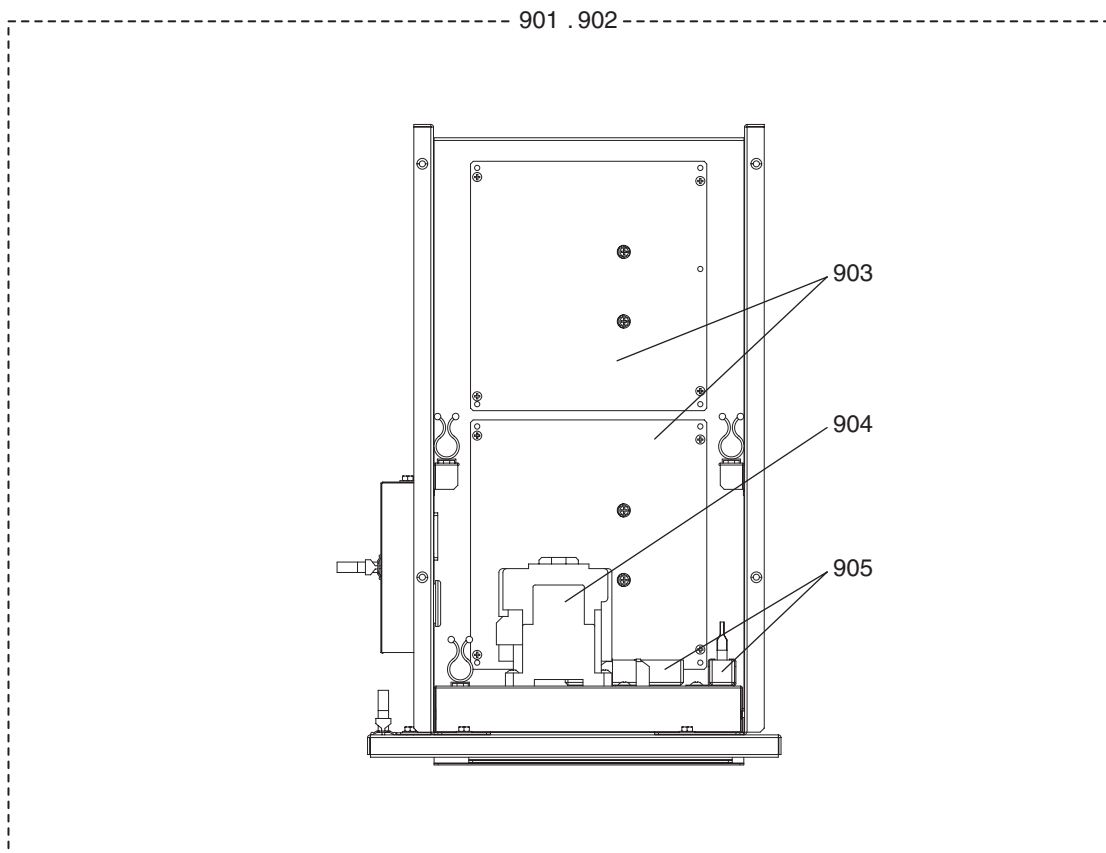


No.	Part No.	Part Name	Spec.							Dwg. No.	Notes for the models	Revision info.
				PUHY-P72ZKMU-A	PUHY-P72ZKMU-A-BS	PUHY-P96ZKMU-A	PUHY-P96ZKMU-A-BS	PUHY-P120ZKMU-A	PUHY-P120ZKMU-A-BS			
701	R61 732 305	Control box	Y-P72ZK	1							KE80G163G01	
702	R61 733 305	Control box	Y-P72ZK BS	1							KE80G163G02	
703	R61 734 305	Control box	Y-P96ZK			1					KE80G163G03	
704	R61 735 305	Control box	Y-P96ZK BS			1					KE80G163G04	
705	R61 736 305	Control box	Y-P144ZK					1			KE80G163G05	
706	R61 737 305	Control box	Y-P144ZK BS					1			KE80G163G06	
707	R61 393 280	Control board		1	1	1	1	1	1		KE80C836G16	<MAIN09>
708	R61 394 280	INV board						1	1		KE80G179G01	<INV34Y>
709	R61 395 280	INV board		1	1	1	1				KE80G179G03	<INV34Y>
710	R61 397 280	M-NET board		1	1	1	1	1	1		KE80C055G08	<PS-MNET-Y>
711	R61 037 293	Noise filter board,coil		1	1	1	1	1	1		KE80G182G01	
712	R61 N18 246	Terminal block		1	1	1	1	1	1		S436005H01	<TB1>
713	R61 052 259	Reactor		1	1						KR65C350H02	<DCL>
714	R61 053 259	Reactor				1	1				KR65C351H02	<DCL>
715	R61 054 259	Reactor						1	1		KR65C352H02	<DCL>
716	R61 025 252	Capacitor assy		1	1	1	1	1	1		KE00G151G01	<C1,C2>
717	R61 005 239	Fuse	3.15A AC250V T	1	1	1	1	1	1		S423001H39	
718	R61 006 239	Fuse	6.3A AC250V T	1	1	1	1	1	1		S423001H42	
719	R61 009 239	Fuse	6A AC600V F	2	2	2	2	2	2		S423005H08	
720	R61 020 239	Fuse	8A DC1000V F	2	2	2	2	2	2		YE81L818H08	

No.	Part No.	Part Name	Spec.	PUHY-P144ZKMU-A	PUHY-P120P144ZKMU-A-BS						Dwg. No.	Notes for the models	Revision info.
701	R61 732 305	Control box	Y-P72ZK								KE80G163G01		
702	R61 733 305	Control box	Y-P72ZK BS								KE80G163G02		
703	R61 734 305	Control box	Y-P96ZK								KE80G163G03		
704	R61 735 305	Control box	Y-P96ZK BS								KE80G163G04		
705	R61 736 305	Control box	Y-P144ZK	1							KE80G163G05		
706	R61 737 305	Control box	Y-P144ZK BS		1						KE80G163G06		
707	R61 393 280	Control board		1	1						KE80C836G16	<MAIN09>	
708	R61 394 280	INV board		1	1						KE80G179G01	<INV34Y>	
709	R61 395 280	INV board									KE80G179G03	<INV34Y>	
710	R61 397 280	M-NET board		1	1						KE80C055G08	<PS-MNET-Y>	
711	R61 037 293	Noise filter	board,coil	1	1						KE80G182G01		
712	R61 N18 246	Terminal block		1	1						S436005H01	<TB1>	
713	R61 052 259	Reactor									KR65C350H02	<DCL>	
714	R61 053 259	Reactor									KR65C351H02	<DCL>	
715	R61 054 259	Reactor		1	1						KR65C352H02	<DCL>	
716	R61 025 252	Capacitor assy		1	1						KE00G151G01	<C1,C2>	
717	R61 005 239	Fuse	3.15A AC250V T	1	1						S423001H39		
718	R61 006 239	Fuse	6.3A AC250V T	1	1						S423001H42		
719	R61 009 239	Fuse	6A AC600V F	2	2						S423005H08		
720	R61 020 239	Fuse	8A DC1000V F	2	2						YE81L818H08		









**mitsubishi**  
**electric**  
**corporation**

---

BWE01524B (20201231)