

PARTS CATALOG

[Model name]
<Outdoor unit>

PUMY-P60NKMU

PUMY-P60NKMU-BS

[Service Ref.]

PUMY-P60NKMU

PUMY-P60NKMU-BS

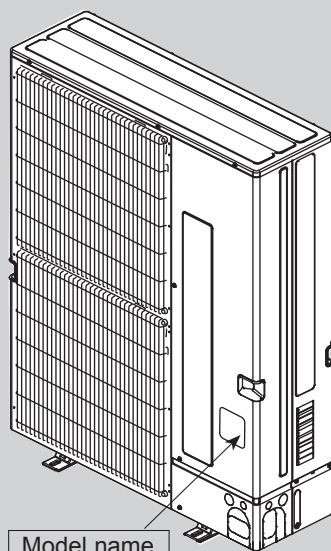
Revision:

- Updated part number for FAN MOTOR in page 3 in REVISED EDITION-A.
- Some descriptions have been modified.

OCB502 is void.

Note :

- RoHS compliant products have <G> mark on spec name plate.
- For servicing of RoHS compliant products, refer to RoHS PARTS LIST.



Model name
indication

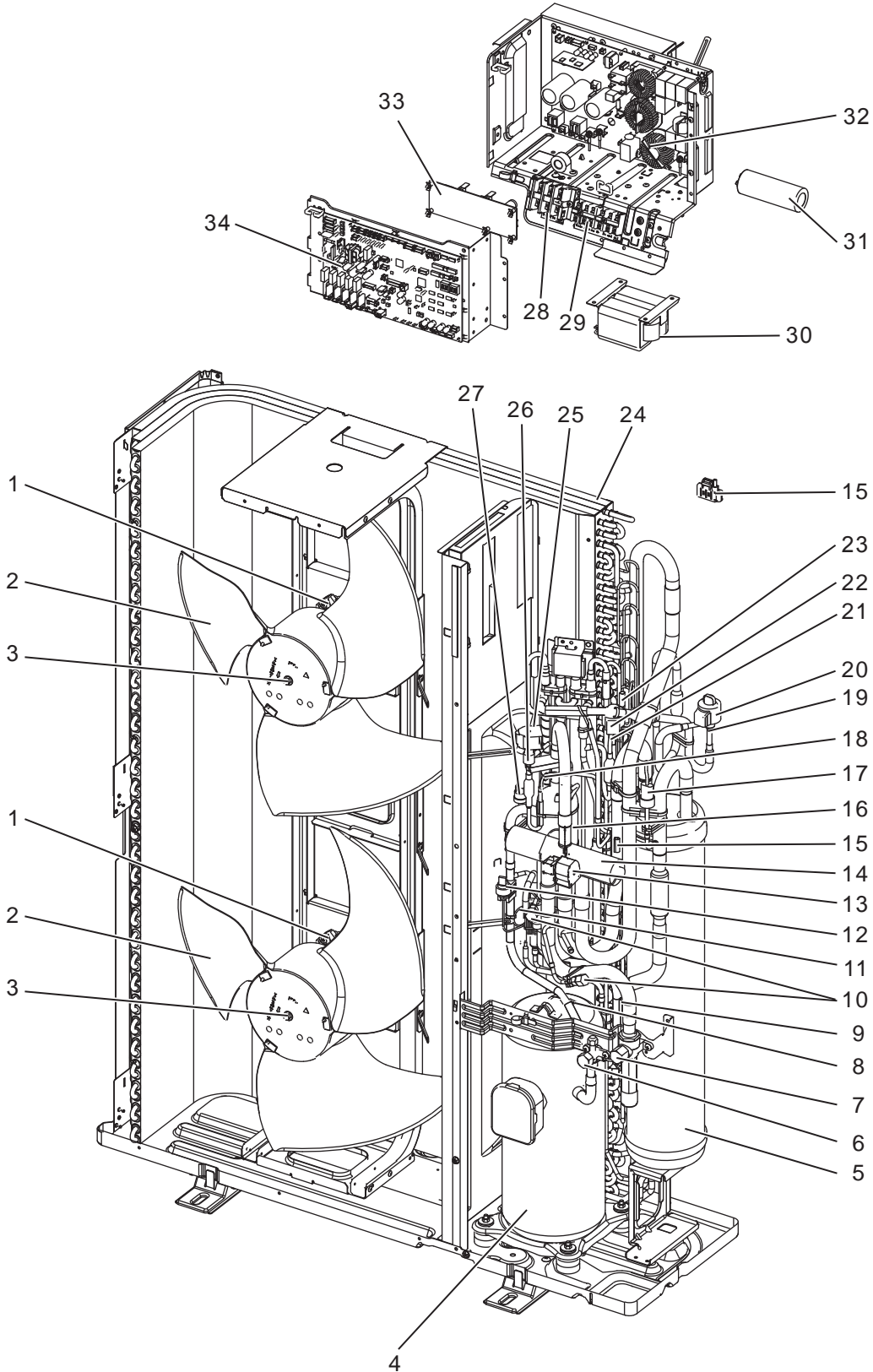
OUTDOOR UNIT

CONTENTS

1. RoHS PARTS LIST 2
2. OPTIONAL PARTS 6

SERVICE MANUAL (OCH502)

1-1. FUNCTIONAL PARTS
 PUMY-P60NKMU
 PUMY-P60NKMU-BS



RoHS PARTS LIST

Part numbers that are circled are not shown in the figure.

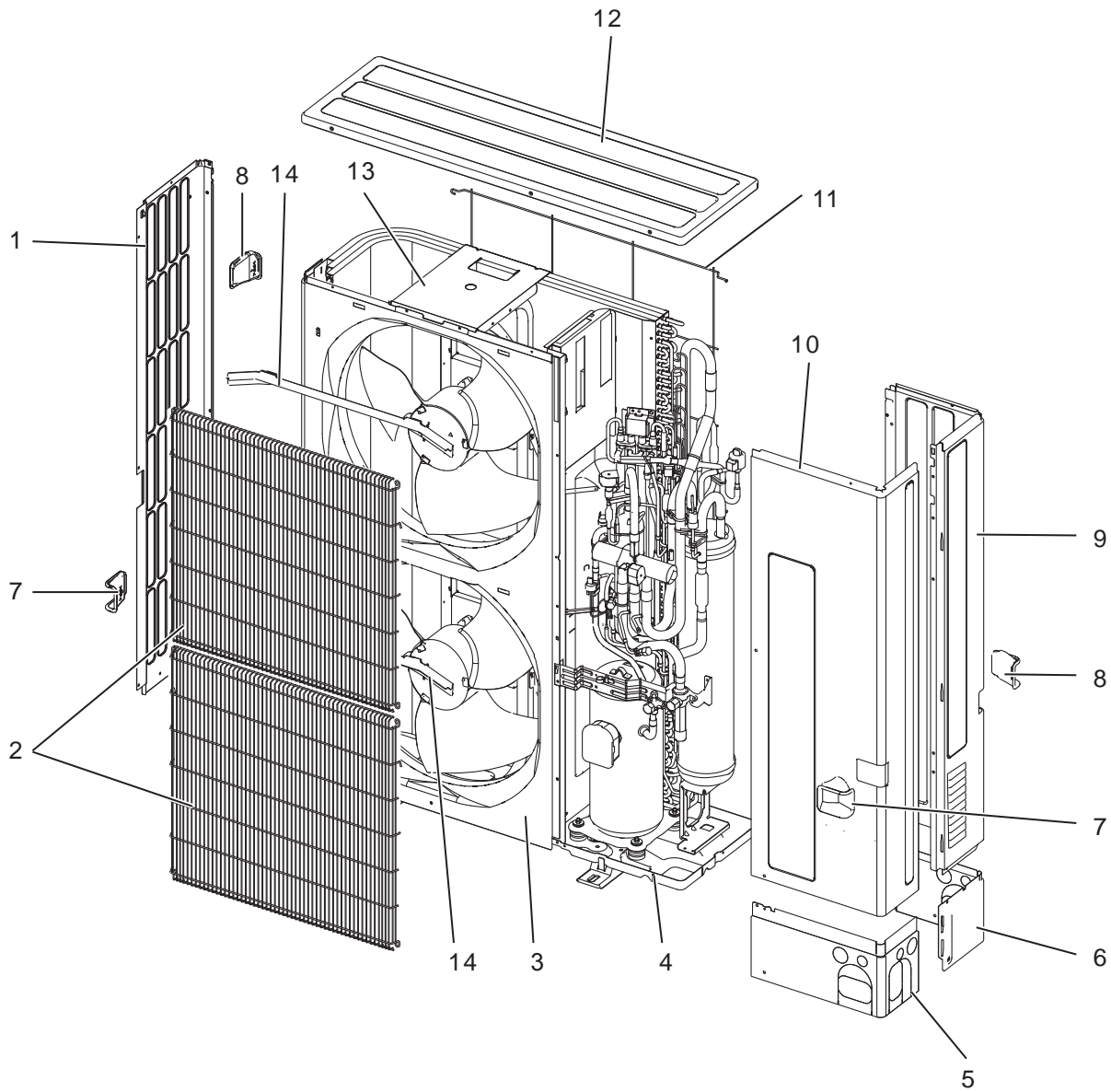
No.	RoHS	Part No.	Part Name	Specification	Q'ty/unit	Remarks (Drawing No.)	Wiring Diagram Symbol	Recom- mended Q'ty
					PJMY-P60NKMU PJMY-P60NKMU-BS			
1	G	T7W A16 221	FAN MOTOR		2		MF1, 2	
2	G	R01 E10 115	PROPELLER FAN		2			
3	G	R01 E09 097	NUT		2			
4	G	T97 415 789	COMPRESSOR	ANB66FFZMT Including RUBBER MOUNT	1		MC	
5	G	R01 E67 440	ACCUMULATOR		1			
6	G	T7W E04 410	STOP VALVE	3/8 (LIQUID)	1			
7	G	T7W E07 411	BALL VALVE	3/4(GAS)	1			
8	G	R01 E28 201	THERMISTOR (COMPRESSOR)		1		TH4	
9	G	R01 H97 202	THERMISTOR (HIC PIPE)		1		TH2	
10	G	R01 E12 413	CHARGE PLUG		2			
11	G	R01 E33 425	CAPILLARY TUBE	$\phi 2.5 \times \phi 0.8 \times 800 \text{mm}$	1			
12	G	R01 E07 208	HIGH PRESSURE SENSOR		1		63HS	
13	G	T7W E58 242	SOLENOID COIL(4-WAY VALVE)		1		21S4	
14	G	R01 E36 403	4-WAY VALVE		1			
15	G	R01 M00 202	THERMISTOR (LOW PRESSURE SATURATED, OUTDOOR)		1		TH6, 7	
16	G	R01 E14 490	OIL SEPARATOR		1			
17	G	R01 E02 209	LOW PRESSURE SENSOR		1		63LS	
18	G	R01 E32 425	CAPILLARY TUBE	$\phi 4.0 \times \phi 3.0 \times 500 \text{mm}$	1			
19	G	R01 H27 401	LEV		1		(LEV-A)	
20	G	R01 E91 242	LEV COIL	CONNECTOR: WHITE	1		LEV-A	
21	G	R01 H32 401	LEV		1		(LEV-B)	
22	G	R01 H04 242	LEV COIL	CONNECTOR: RED	1		LEV-B	
23	G	R01 H87 202	THERMISTOR (OUTDOOR PIPE)		1		TH3	
24	G	R01 H37 408	HEAT EXCHANGER		1			
25	G	T7W E59 242	SOLENOID VALVE COIL (BYPASS VALVE)		1		SV1	
26	G	R01 E16 428	SOLENOID VALVE		1			
27	G	T7W E07 208	HIGH PRESSURE SWITCH		1		63H	
28	G	T7W 603 246	TERMINAL BLOCK	3P (L1, L2, GR)	1		TB1	
29	G	R01 E27 246	TERMINAL BLOCK	3P (M1, M2, S)	2		TB3,TB7	
30	G	T7W E23 259	REACTOR		1		DCL	
31	G	R01 E20 254	MAIN SMOOTHING CAPACITOR		1		CB	
32	G	T7W AA0 323	POWER CIRCUIT BOARD		1		P.B.	
33	G	R01 E04 311	M-POWER BOARD		1		M-P.B	
34	G	T7W F23 315	CONTROLLER BOARD		1		MULTI.B	
35	G	R01 E06 239	FUSE	250V 6.3A	2		F1, F2	

RoHS PARTS LIST

1-2. STRUCTURAL PARTS

PUMY-P60NKMU

PUMY-P60NKMU-BS



RoHS PARTS LIST

Part numbers that are circled are not shown in the figure.

No.	RoHS	Part No.	Part Name	Specification	Q'ty/unit	Remarks (Drawing No.)	Wiring Diagram Symbol	Recom- mended Q'ty
					PJMY-P60NKKMU PJMY-P60NKKMU-BS			
1	G	R01 E30 662	SIDE PANEL (L)		1			
2	G	R01 E73 691	WIRE GRILLE		2			
3	G	R01 E23 668	FRONT PANEL		1			
4	G	R01 E53 686	BASE ASSY		1			
5	G	R01 E35 658	COVER PANEL (FRONT)		1			
6	G	R01 E36 658	COVER PANEL (REAR)		1			
7	G	R01 E03 655	HANDLE		2			
8	G	R01 E04 655	HANDLE		2			
9	G	T7W E36 661	SIDE PANEL (R)		1			
10	G	T7W E20 668	SERVICE PANEL		1			
11	G	R01 E10 698	REAR GUARD		1			
12	G	R01 E36 641	TOP PANEL		1			
13	G	R01 E48 130	MOTOR SUPPORT		1			
14	G	R01 E02 631	ICE GUARD		2			
15	G	T7W E04 617	CONDUIT PLATE		1			

2**OPTIONAL PARTS****DRAIN SOCKET**

Part No.	PAC-SG61DS-E
----------	--------------

AIR OUTLET GUIDE

Part No.	PAC-SH96SG-E
----------	--------------

※ Need 2 pieces.

AIR PROTECT GUIDE

Part No.	PAC-SH95AG-E
----------	--------------

※ Need 2 pieces.

CENTRALIZED DRAIN PAN

Part No.	PAC-SH97DP-E
----------	--------------

BRANCH PIPE (Joint)

Part No.	NUMBER OF BRANCHING POINTS
CMY-Y62-G-E	2
CMY-Y64-G-E	4
CMY-Y68-G-E	8

mitsubishi electric corporation

HEAD OFFICE : TOKYO BUILDING, 2-7-3, MARUNOUCHI, CHIYODA-KU, TOKYO 100-8310, JAPAN