

SERVICE PARTS LIST FOR MITSUBISHI ELECTRIC PACKAGED AIR-CONDITIONERS

Series : PURY-P·T(S)JMU-A(-BS)
PURY-P·Y(S)JMU-A(-BS)

For use with the R410A

REVISED

June 2023

BWE0933G

INDEX

PURY-P72TJMU-A(-BS)
PURY-P96TJMU-A(-BS)
PURY-P120TJMU-A(-BS)
PURY-P144TJMU-A(-BS)
PURY-P72YJMU-A(-BS)
PURY-P96YJMU-A(-BS)
PURY-P120YJMU-A(-BS)
PURY-P144YJMU-A(-BS)

Refer to the next page for the package names.

Part information update day : 2023/06/21

Please change the old catalog (issued July 2019, No.BWE0933F) to this new catalog.
Content of revision : Some of parts are changed.

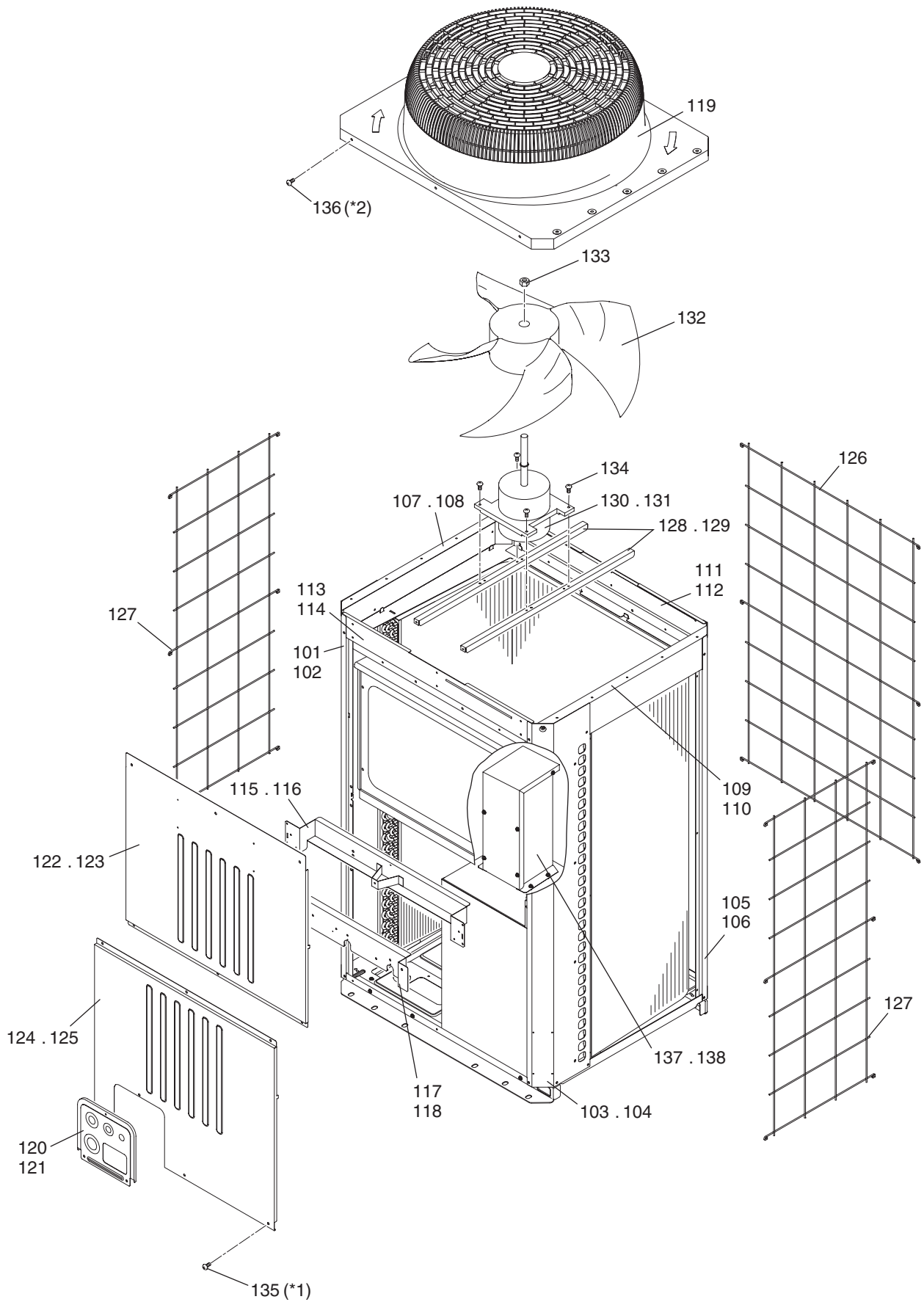


The Package name list

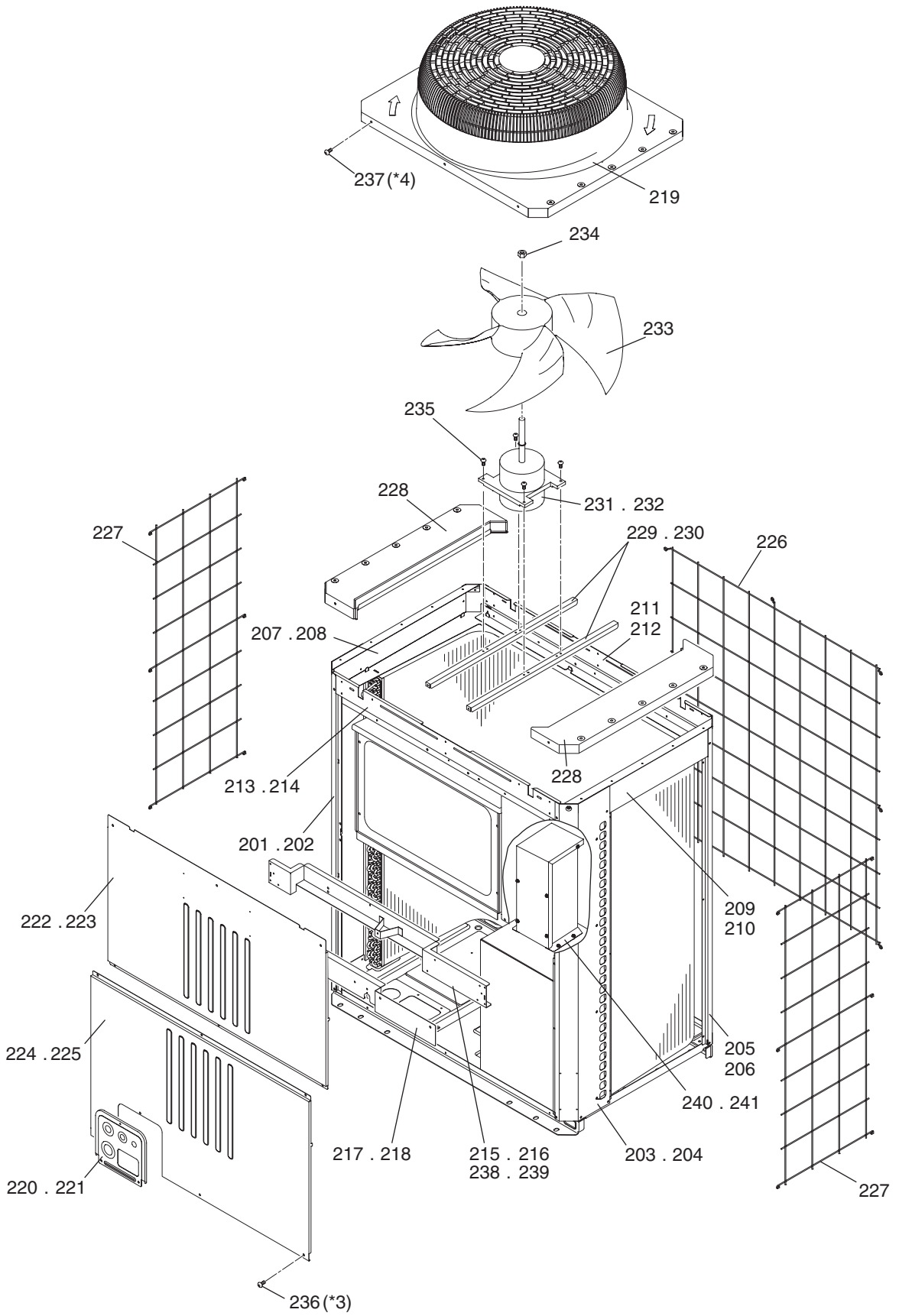
PURY-P168TSJMU-A(-BS)	[PURY-P72TJMU-A(-BS) +PURY-P96TJMU-A(-BS)]
PURY-P192TSJMU-A(-BS)	[PURY-P96TJMU-A(-BS) +PURY-P96TJMU-A(-BS)]
PURY-P216TSJMU-A(-BS)	[PURY-P96TJMU-A(-BS) +PURY-P120TJMU-A(-BS)]
PURY-P240TSJMU-A(-BS)	[PURY-P120TJMU-A(-BS) +PURY-P120TJMU-A(-BS)]
PURY-P264TSJMU-A(-BS)	[PURY-P120TJMU-A(-BS) +PURY-P144TJMU-A(-BS)]
PURY-P288TSJMU-A(-BS)	[PURY-P144TJMU-A(-BS) +PURY-P144TJMU-A(-BS)]
PURY-P168YSJMU-A(-BS)	[PURY-P72YJMU-A(-BS) +PURY-P96YJMU-A(-BS)]
PURY-P192YSJMU-A(-BS)	[PURY-P96YJMU-A(-BS) +PURY-P96YJMU-A(-BS)]
PURY-P216YSJMU-A(-BS)	[PURY-P96YJMU-A(-BS) +PURY-P120YJMU-A(-BS)]
PURY-P240YSJMU-A(-BS)	[PURY-P120YJMU-A(-BS) +PURY-P120YJMU-A(-BS)]
PURY-P264YSJMU-A(-BS)	[PURY-P120YJMU-A(-BS) +PURY-P144YJMU-A(-BS)]
PURY-P288YSJMU-A(-BS)	[PURY-P144YJMU-A(-BS) +PURY-P144YJMU-A(-BS)]

PURY-P72TJMU-A(-BS)
 PURY-P72YJMU-A(-BS)

EXTERNAL PARTS & BLOWER PARTS (1)

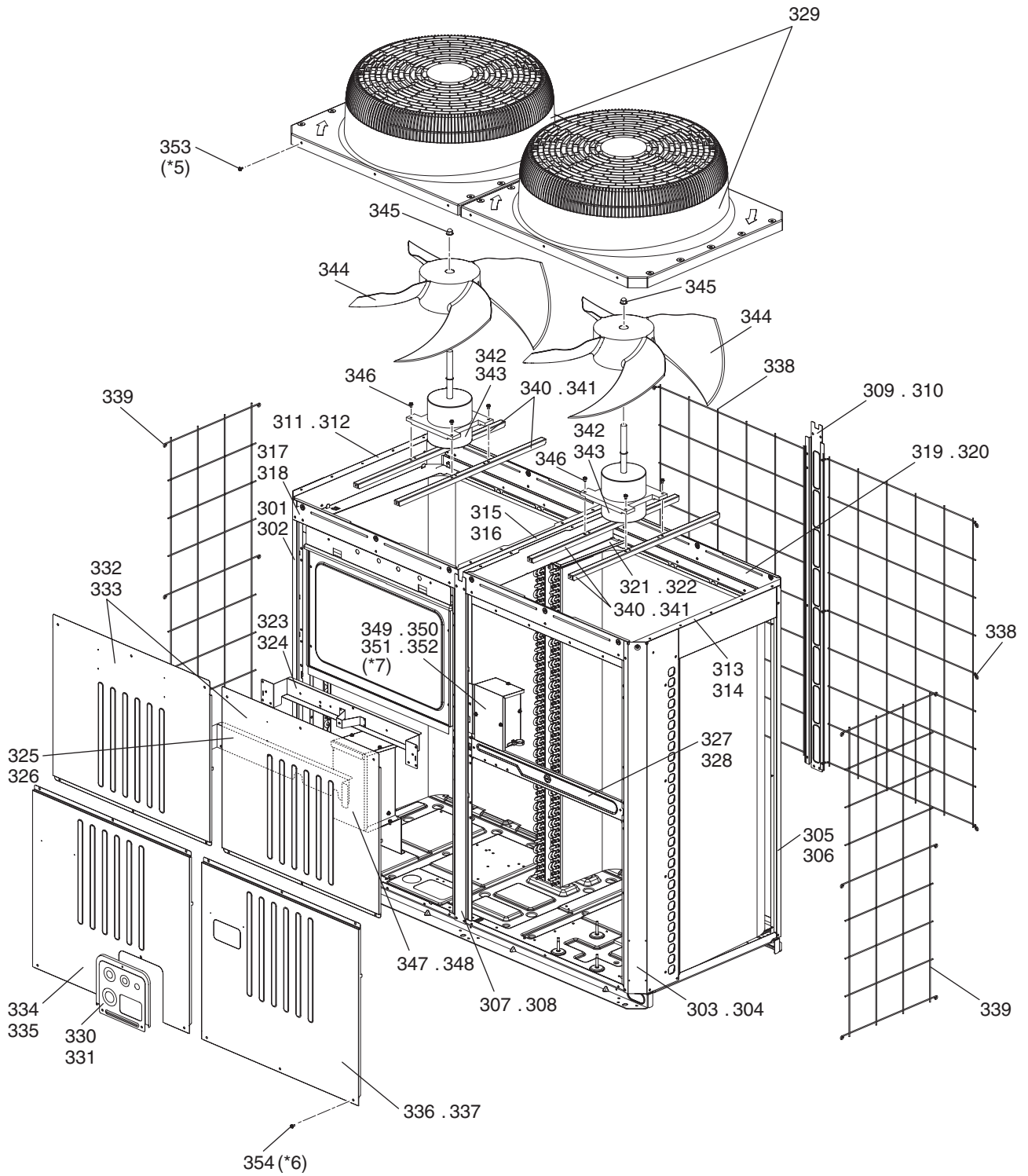


*1 PURY-P72TJMU-A(-BS)...85 H Screws (part No.135). PURY-P72YJMU-A(-BS)...90 H Screws (part No.135).
 *2 PURY-P72TJMU-A(-BS)...35 WFT Screws (part No.136). PURY-P72YJMU-A(-BS)...51 WFT Screws (part No.136).



*3 PURY-P96TJMU-A(-BS)...91 H Screws (part No.236). PURY-P96YJMU-A(-BS)...96 H Screws (part No.236).
 *4 PURY-P96TJMU-A(-BS)...43 WFT Screws (part No.237). PURY-P96YJMU-A(-BS)...59 WFT Screws (part No.237).

No.	Part No.	Part Name	Spec.	PURY-P96TJMU-A	PURY-P96TJMU-A-BS	PURY-P96YJMU-A	PURY-P96YJMU-A-BS	Dwg. No.	Notes for the models	Revision info.
201	R11 019 626	Pillar LF		1		1		KB02A011G07		
202	R11 020 626	Pillar LF	BS		1		1	KB02A011G08		
203	R11 014 626	Pillar RF		1		1		KB02A012G07		
204	R11 015 626	Pillar RF	BS		1		1	KB02A012G08		
205	R63 002 627	Pillar B		2		2		KB02A013G07		
206	R63 003 627	Pillar B	BS		2		2	KB02A013G08		
207	R63 038 162	Frame assy L		1		1		KD00G100G01		
208	R63 040 162	Frame assy L	BS		1		1	KD00G100G02		
209	R63 039 162	Frame assy R		1		1		KD00G101G01		
210	R63 041 162	Frame assy R	BS		1		1	KD00G101G02		
211	R63 019 111	Frame assy B	18HP	1		1		KB00C464G06		
212	R63 020 111	Frame assy B	18HP BS		1		1	KB00C464G07		
213	R63 021 111	Frame F	18HP	1		1		KB02B093H03		
214	R63 022 111	Frame FB	18HP BS		1		1	KB02B093G08		
215	R61 031 162	Frame assy MU	18HP	1				KB00T829G01		
216	R61 033 162	Frame assy MU	18HP BS		1			KB00T829G03		
217	R61 006 162	Frame assy MB	18HP	1		1		KB00L186G01		
218	R61 008 162	Frame assy MB	18HP BS		1		1	KB00L186G07		
219	R63 4H6 118	Fan guard		1	1	1	1	KB25A008H08		Chg.
220	R61 120 690	Piping cover	R2 THMU	1		1		KB02L912G07		
221	R61 121 690	Piping cover	R2 THMU BS		1		1	KB02L912G10		Chg.
222	R61 051 651	Panel FU	18HP	1		1		KB02B402H02		
223	R63 7H8 651	Panel FU	18HP BS		1		1	KB02B402G04		
224	R61 005 652	Panel FB	18HP YHM-A	1		1		KB02B403H02		
225	R61 006 652	Panel FB	18HP YHM-A BS		1		1	KB02B403G03		
226	R61 003 118	Fin guard B	18HP	1	1	1	1	KB07T209G01		
227	R61 007 611	Fin guard LR		2	2	2	2	KB07C043G04		Chg.
228	R63 7H6 118	Fan guard cover		2	2	2	2	KB25B086H04		Chg.
229	R63 4H6 140	Base fan		2		2		KB02D050H01		
230	R63 4H7 140	Base fan	BS		2		2	KB02D050G05		
231	R61 047 220	Motor	TC920IA-UL	1	1			P780112X02		
232	R61 060 220	Motor	UC920IA			1	1	P780138X02		
233	R61 001 300	Fan		1	1	1	1	KB25A009H05		
234	R63 4H6 122	Box nut	M12 CH	1	1	1	1	P552000X01		
235	R63 014 087	Upset Screw	6 x 10	4	4	4	4	P516047X01		
236	R61 048 087	H Screw	5 x 10 KNURLED (30 pcs)	4	4	4	4	KB00H418G14	*3	
237	R63 006 087	WFT Screw	5 x 12 (30 pcs)	2	2	2	2	KB00H418G01	*4	
238	R61 044 162	Frame assy MU	18HP			1		KB00T829G04		
239	R61 045 162	Frame assy MU	18HP				1	KB00T829G06		
240	R61 024 260	Transformer assy				1		KB00K063G03		
241	R61 025 260	Transformer assy	BS				1	KB00K063G04		



*5 PURY-P120,P144TJMU-A(-BS)...55 WFT Screws (part No.353). PURY-P120,P144YJMU-A(-BS)...71 WFT Screws (part No.353).
 *6 PURY-P120,P144TJMU-A(-BS)...144 H Screws (part No.354). PURY-P120,P144YJMU-A(-BS)...152 H Screws (part No.354).
 *7 To ensure proper operation, when problems arise with any parts in the contactor box assy, replace the entire contactor box assy (parts No.349,350,351,or 352), not just individual parts.

PURY-P120,P144TJMU-A(-BS)
PURY-P120,P144YJMU-A(-BS)

EXTERNAL PARTS & BLOWER PARTS (3)

No.	Part No.	Part Name	Spec.	PURY-P120TJMU-A	PURY-P120TJMU-A-BS	PURY-P144TJMU-A	PURY-P144TJMU-A-BS	PURY-P120YJMU-A	PURY-P120YJMU-A-BS	Dwg. No.	Notes for the models	Revision info.
301	R61 009 626	Pillar LF	XL	1		1		1		KB02A011G09		
302	R61 010 626	Pillar LF	XL BS		1		1		1	KB02A011G10		
303	R11 014 626	Pillar RF		1		1		1		KB02A012G07		
304	R11 015 626	Pillar RF	BS		1		1		1	KB02A012G08		
305	R63 002 627	Pillar B		2		2		2		KB02A013G07		
306	R63 003 627	Pillar B	BS		2		2		2	KB02A013G08		
307	R61 013 626	Pillar assy MF		1		1		1		KD00C356G01		
308	R61 014 626	Pillar assy MF	BS		1		1		1	KD00C356G02		
309	R61 011 626	Pillar MB		1		1		1		KB02A263G01		
310	R61 012 626	Pillar MB	BS		1		1		1	KB02A263G02		
311	R63 038 162	Frame assy L		1		1		1		KD00G100G01		
312	R63 040 162	Frame assy L	BS		1		1		1	KD00G100G02		
313	R63 039 162	Frame assy R		1		1		1		KD00G101G01		
314	R63 041 162	Frame assy R	BS		1		1		1	KD00G101G02		
315	R61 046 162	Frame M		1		1		1		KB02J306H01		
316	R61 047 162	Frame M	BS		1		1		1	KB02J306G01		
317	R61 048 162	Frame F	XL	1		1		1		KB02A264H01		
318	R61 049 162	Frame FB	XL BS		1		1		1	KB02A264G06		
319	R61 042 162	Frame assy B	XL	1		1		1		KD00C265G05		
320	R61 043 162	Frame assy B	XL BS		1		1		1	KD00C265G06		
321	R61 003 499	Plate HEX assy	XL	1		1		1		KB00T714G01		
322	R61 004 499	Plate HEX assy	XL BS		1		1		1	KB00T714G02		
323	R63 013 111	Frame assy MU		1		1		1		KB00C887G01		
324	R63 014 162	Frame assy MU	BS		1		1		1	KB00C887G07		
325	R63 016 111	Frame assy MB		1		1		1		KB00L774G01		
326	R63 015 162	Frame assy MB	BS		1		1		1	KB00L774G07		
327	R61 050 162	Frame MR	XL	1		1		1		KB02J307H01		
328	R61 051 162	Frame MR	XL BS		1		1		1	KB02J307G01		
329	R61 004 118	Fan guard		2	2	2	2	2	2	KB25A241H04		Chg.
330	R61 120 690	Piping cover	R2 THM	1		1		1		KB02L912G07		
331	R61 121 690	Piping cover	R2 THM BS		1		1		1	KB02L912G10		Chg.
332	R61 050 651	Panel FU		2		2		2		KB02B379H02		
333	R63 4H8 651	Panel FU	BS		2		2		2	KB02B379G04		
334	R61 157 651	Panel FBL	XL	1		1		1		KB02J308H02		
335	R61 158 651	Panel FBL	XL BS		1		1		1	KB02J308G04		
336	R63 159 651	Panel FBR	XL	1		1		1		KB02J309H03		
337	R61 160 651	Panel FBR	XL BS		1		1		1	KB02J309G04		
338	R63 004 611	Fin guard B		2	2	2	2	2	2	KB07T208G01		
339	R61 007 611	Fin guard LR		2	2	2	2	2	2	KB07C043G04		Chg.
340	R63 4H6 140	Base fan		4		4		4		KB02D050H01		
341	R63 4H7 140	Base fan	BS		4		4		4	KB02D050G05		
342	R61 120 220	Motor	EEOK-IOTV 180V	2	2	2	2			P780169X01		
343	R61 121 220	Motor	EEOK-IOTV 414V					2	2	P780168X01		
344	R61 001 300	Fan		2	2	2	2	2	2	KB25A009H05		
345	R63 4H6 122	Box nut	M12 CH	2	2	2	2	2	2	P552000X01		

No.	Part No.	Part Name	Spec.	PURY-P144YJMU-A	PURY-P144YJMU-A-BS					Dwg. No.	Notes for the models	Revision info.
301	R61 009 626	Pillar LF	XL	1						KB02A011G09		
302	R61 010 626	Pillar LF	XL BS	1						KB02A011G10		
303	R11 014 626	Pillar RF		1						KB02A012G07		
304	R11 015 626	Pillar RF	BS	1						KB02A012G08		
305	R63 002 627	Pillar B		2						KB02A013G07		
306	R63 003 627	Pillar B	BS	2						KB02A013G08		
307	R61 013 626	Pillar assy MF		1						KD00C356G01		
308	R61 014 626	Pillar assy MF	BS	1						KD00C356G02		
309	R61 011 626	Pillar MB		1						KB02A263G01		
310	R61 012 626	Pillar MB	BS	1						KB02A263G02		
311	R63 038 162	Frame assy L		1						KD00G100G01		
312	R63 040 162	Frame assy L	BS	1						KD00G100G02		
313	R63 039 162	Frame assy R		1						KD00G101G01		
314	R63 041 162	Frame assy R	BS	1						KD00G101G02		
315	R61 046 162	Frame M		1						KB02J306H01		
316	R61 047 162	Frame M	BS	1						KB02J306G01		
317	R61 048 162	Frame F	XL	1						KB02A264H01		
318	R61 049 162	Frame FB	XL BS	1						KB02A264G06		
319	R61 042 162	Frame assy B	XL	1						KD00C265G05		
320	R61 043 162	Frame assy B	XL BS	1						KD00C265G06		
321	R61 003 499	Plate HEX assy	XL	1						KB00T714G01		
322	R61 004 499	Plate HEX assy	XL BS	1						KB00T714G02		
323	R63 013 111	Frame assy MU		1						KB00C887G01		
324	R63 014 162	Frame assy MU	BS	1						KB00C887G07		
325	R63 016 111	Frame assy MB		1						KB00L774G01		
326	R63 015 162	Frame assy MB	BS	1						KB00L774G07		
327	R61 050 162	Frame MR	XL	1						KB02J307H01		
328	R61 051 162	Frame MR	XL BS	1						KB02J307G01		
329	R61 004 118	Fan guard		2	2					KB25A241H04		Chg.
330	R61 120 690	Piping cover	R2 THM	1						KB02L912G07		
331	R61 121 690	Piping cover	R2 THM BS	1						KB02L912G10		Chg.
332	R61 050 651	Panel FU		2						KB02B379H02		
333	R63 4H8 651	Panel FU	BS	2						KB02B379G04		
334	R61 157 651	Panel FBL	XL	1						KB02J308H02		
335	R61 158 651	Panel FBL	XL BS	1						KB02J308G04		
336	R63 159 651	Panel FBR	XL	1						KB02J309H03		
337	R61 160 651	Panel FBR	XL BS	1						KB02J309G04		
338	R63 004 611	Fin guard B		2	2					KB07T208G01		
339	R61 007 611	Fin guard LR		2	2					KB07C043G04		Chg.
340	R63 4H6 140	Base fan		4						KB02D050H01		
341	R63 4H7 140	Base fan	BS	4						KB02D050G05		
342	R61 120 220	Motor	EEOK-IOTV 180V							P780169X01		
343	R61 121 220	Motor	EEOK-IOTV 414V	2	2					P780168X01		
344	R61 001 300	Fan		2	2					KB25A009H05		
345	R63 4H6 122	Box nut	M12 CH	2	2					P552000X01		

No.	Part No.	Part Name	Spec.	PURY-P72TJMU-A	PURY-P72YJMU-A-BS	PURY-P72TJMU-A	PURY-P72YJMU-A-BS	Dwg. No.	Notes for the models	Revision info.
401	R69 064 478	Scroll compressor	ENB52FC-U	1	1			EP10107B09		
402	R69 178 478	Scroll compressor	ENB52FC-YE			1	1	EP10107B08		
403	R61 079 484	Accumulator assy		1		1		KB54B375G44		
404	R61 080 484	Accumulator assy	BS		1		1	KB54B375G32		
405	R61 007 487	Oil separator assy		1	1	1	1	KB00L071G01		
406	R63 Y05 154	Four way valve	STF-0731G	1	1	1	1	P633119X01	<21S4a>	
407	R61 013 418	Check valve	YBV-22YA7GMD-2	1	1	1	1	P633138X01	<CV2a>	Chg.
408	R61 072 418	Check valve	BCV-1807DYQ2	2	2	2	2	P639218X02	<CV3a,5a> *13	
409	R61 065 418	Check valve	YBV-22Y9GMD-4	2	2	2	2	P639196X01	<CV4a,7a>	Chg.
410	R63 R43 418	Check valve	BCV-1005DYQ82	4	4	4	4	P639165X01	<CV6a,8a,9a,10a>	
411	R61 026 232	Valve block assy	3SV	1	1	1	1	KB00L055G03		
412	R61 009 540	Valve	VSAMH5SSCM-LA1	1	1	1	1	P636344X01	<(HP) BV2>	Chg.
413	R61 008 540	Valve	VSAMH7SSCM-A	1	1	1	1	P636342X01	<(LP) BV1>	Chg.
414	R63 027 232	Solenoid valve	VPV-L202D	1	1	1	1	P631296X01	<SV5b>	
415	R63 Y07 232	Solenoid valve	ATS-B7SMD-1	1	1	1	1	P631291X01	<SV9>	
416	R63 R34 413	Check joint L		2	2	2	2	P666004X02	<(HP) CJ1,(LP)CJ2>	
417	R61 009 425	Capillary tube assy	service parts kit	1	1	1	1	KB00H902G20	<CP1> *9	
418	R61 006 425	Capillary tube assy		1	1	1	1	KB49H698G01	<CP2>	
419	R63 4H6 454	Strainer	19.05D	1	1	1	1	KD48G400G01	<ST1>	
420	R61 011 243	Solenoid valve coil	VPV-MO AQ540UA1	4	4	4	4	P472047X01	<SV1a,2,5b,5c>	
421	R61 Y21 243	Four way valve coil	STF-01AQ505UA1	1	1	1	1	P472028X01	<21S4a>	
422	R61 076 243	Solenoid valve coil	A20-1B02B-1	4	4	4	4	P472123X01	<SV4a,4b,4d,9>	Chg.
423	R61 006 288	Pressure sensor	HP D173	1	1	1	1	KB00H904G09	<(HP) 63HS1>	
424	R61 007 288	Pressure sensor	LP D173	1	1	1	1	KB00H904G10	<(LP) 63LS>	
425	R61 056 208	Pressure switch	ACB-1UB28W	1	1	1	1	P426320X02	<63H1>	
426	R61 060 200	Thermistor		4	4	4	4	P418065X01	<TH3,5,6,7>	
427	R63 911 202	Thermistor		1	1	1	1	P425416X02	<TH4>	
428	R61 002 237	Belt heater	230V 35W	1	1	1	1	P497048X01	<CH11>	
429	R61 034 232	Solenoid valve	VPV-152DU5	2	2	2	2	P631294X01	<SV2,5c>	
430	R63 6A7 235	Solenoid valve	ACS-BPMD-8	3	3	3	3	P631310X01	<SV4a,4b,4d>	
431	R61 412 480	Heat exchanger assy	3L	1		1		KB01R680G05		
432	R61 413 480	Heat exchanger assy	3L BS		1		1	KB01R680G06		
433	R63 852 860	Rubber mount	For compressor	4	4	4	4	W897574H01		
434	R61 010 235	SV tightening element		1	1	1	1	W909209G01		Chg.
435	R61 033 232	SV service parts kit		1	1	1	1	KB00H902G19	*10	
436	R61 004 151	Connecting pipe	9.52 with instructions *11	1	1	1	1	KB00H902G25	<CV4a,6a,8a,9a,10a> *11	
437	R61 001 310	Sensor holder		1	1	1	1	KB25B471H04		Chg.
438	R61 106 288	COMP shell kit J		1	1	1	1	KJ00K045G01	*12	
439	R61 T01 362	Sensor kit	72TJMU	1	1			KJ00K047G01	*12	
440	R61 T01 365	Sensor kit	72YJMU			1	1	KJ00K047G04	*12	
441	R61 094 418	Check valve	BCV-1810DY	2	2	2	2	P639170X01	<CV3a,5a> *14	

**PURY-P96TJMU-A(-BS)
PURY-P96YJMU-A(-BS)**

FUNCTIONAL PARTS (2)

Spec Label "Equipped" Label

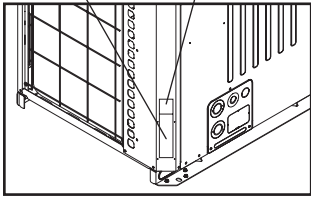
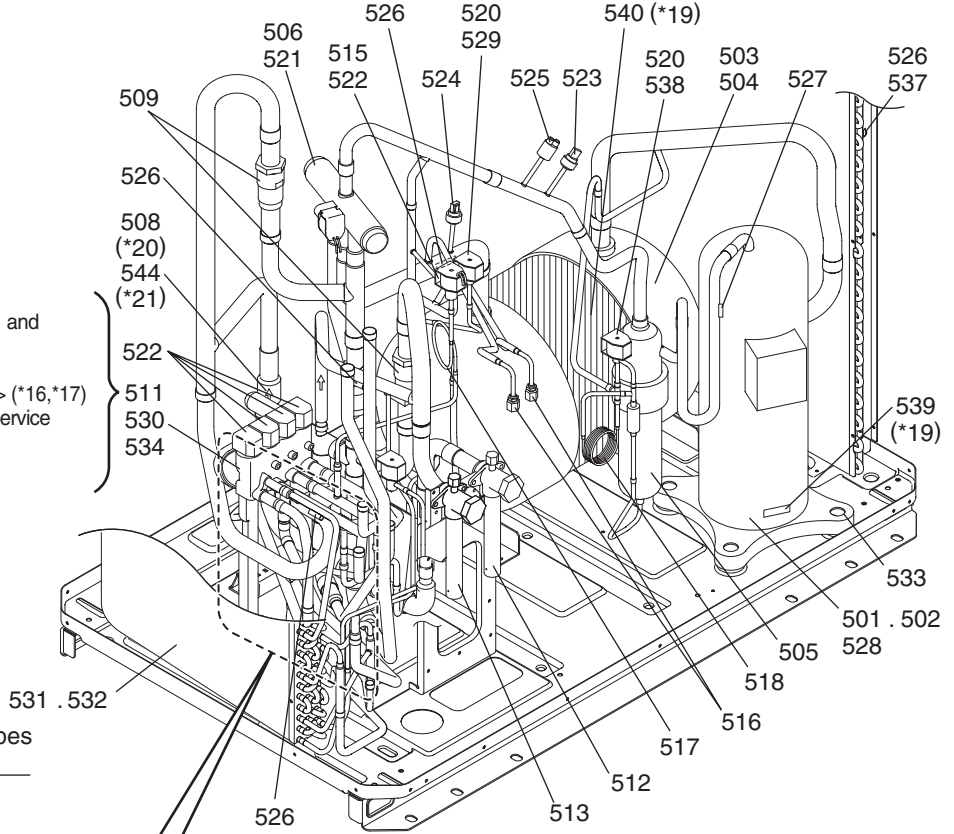
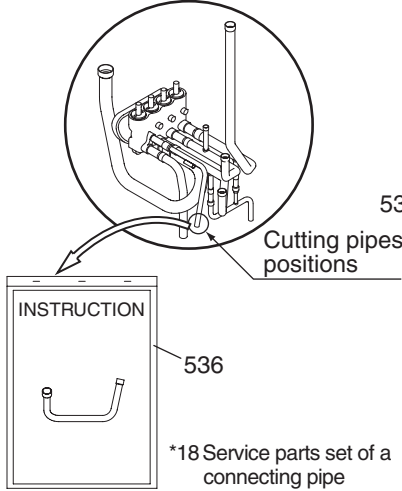


Figure 2

<To replace parts with the HEX removed>
Individual replacement of parts No.511, 530, and 534 is possible.

<To replace parts without the HEX removed> (*16,*17)
Replace parts No.511, 530, and 534 with a service pipe assembly 535 (Figure 1).

Figure 1

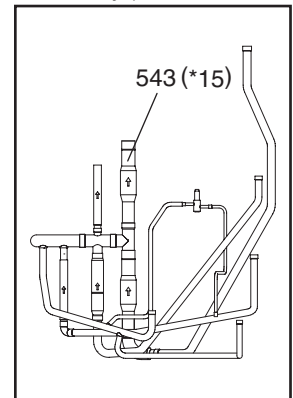
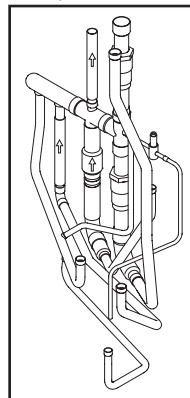
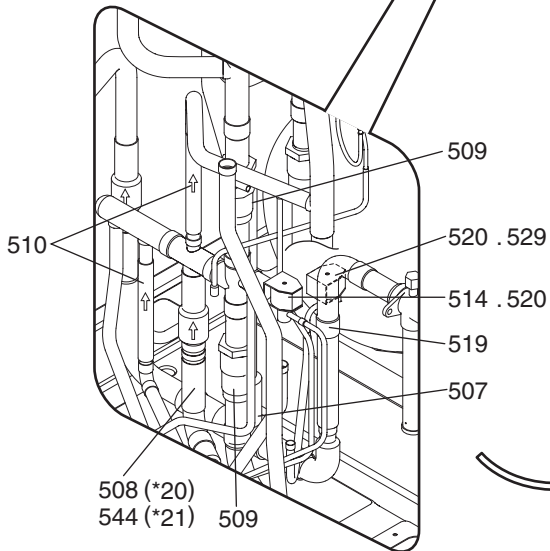


<To replace parts without the HEX removed> (*16,*18)
Remove the solenoid valve block assembly (Figure 1), take the whole check valve assembly out of the unit (see figure below) and replace individual valve parts as required.
Only one part No.536 (Connecting pipe section to HEX) is required when replacing one or more check valves.

<To replace parts with the HEX removed>
Individual replacement of parts No.508, 510 and 544 is possible.

When the part alone is replaced (508,509,510,544)

When the part is replaced as an assembly (508,509,510,544)



*15 For how to attach part No.543, refer to the replacement instruction in the service handbook.

Actual external appearance of some service parts may differ from the figure.

*16 Refer to the replacement instructions provided with parts No.535 and 536 for details.

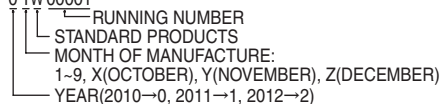
*17 A solenoid valve block assy, a connecting pipe, and a sheet of replacement instructions are included with Solenoid valve block service parts kit (No. 535).

*18 Part No.536 is the connecting pipe with the sheet of replacement instructions.

*19 If "Equipped" label as shown in Figure 2 is attached on the unit, order the Compressor shell kit part No.539 and Accumulator heater kit part No.540. If it is not attached, order the Sensor kit part No.541 or 542.

*20 For the units manufactured after 2YW****. DETAIL OF SERIAL NUMBER 0 1W 00001

*21 For the units manufactured before 2XW****.



PURY-P96TJMU-A(-BS)
PURY-P96YJMU-A(-BS)

FUNCTIONAL PARTS (2)

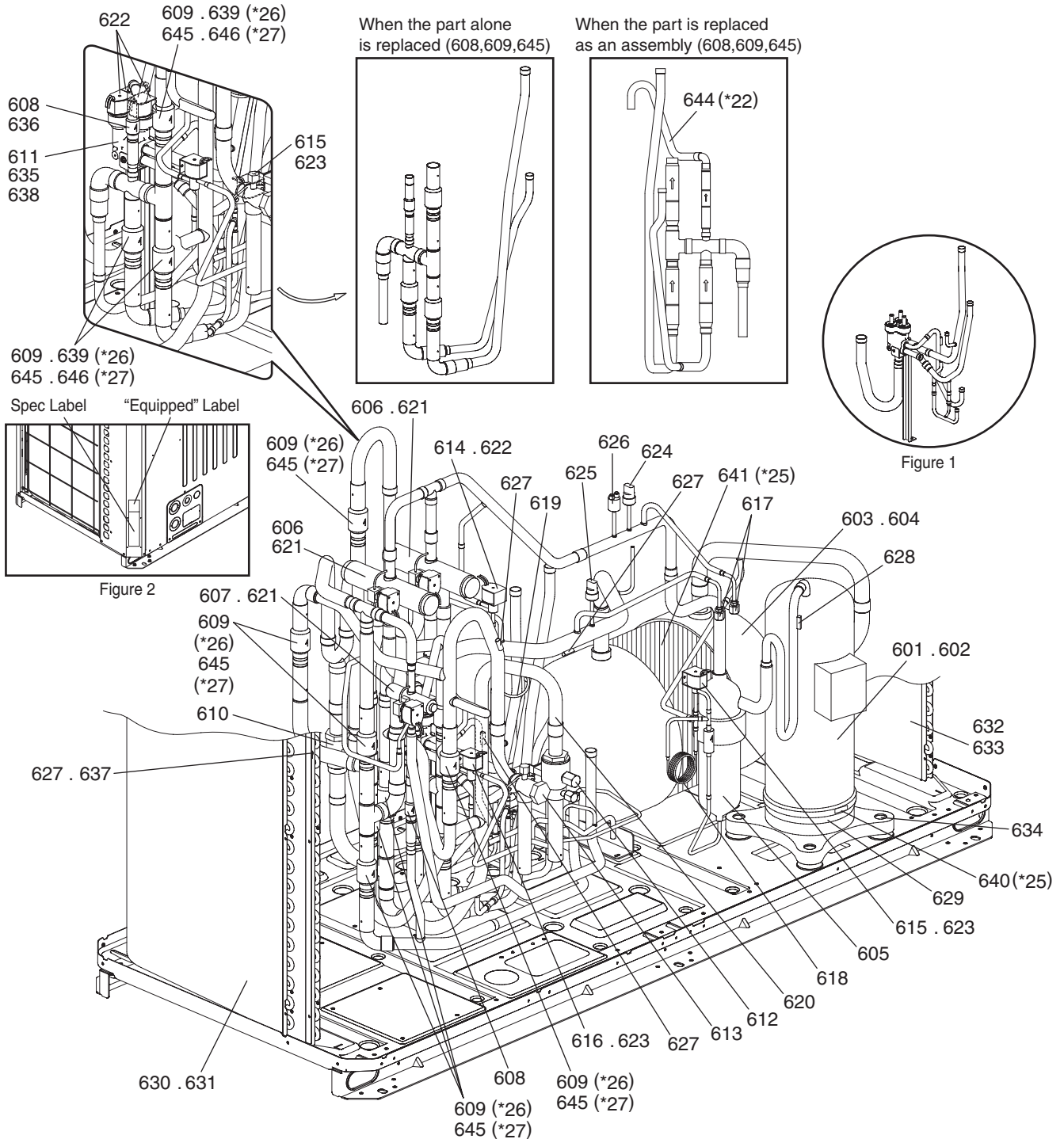
No.	Part No.	Part Name	Spec.	PURY-P96TJMU-A	PURY-P96TJMU-A-BS	PURY-P96YJMU-A	PURY-P96YJMU-A-BS	Dwg. No.	Notes for the models	Revision info.
501	R69 069 478	Scroll compressor	HNB78FC-U	1	1			EP10109B09		
502	R69 193 478	Scroll compressor	HNB78FC-YE			1	1	EP10109B08		
503	R61 046 484	Accumulator assy		1		1		KB54B479G05		
504	R61 047 484	Accumulator assy	BS		1		1	KB54B479G06		
505	R61 007 487	Oil separator assy		1	1	1	1	KB00L071G01		
506	R63 Y05 154	Four way valve	STF-0731G	1	1	1	1	P633119X01	<21S4a>	
507	R61 013 418	Check valve	YBV-22YA7GMD-2	1	1	1	1	P633138X01	<CV2a>	Chg.
508	R61 072 418	Check valve	BCV-1807DYQ2	2	2	2	2	P639218X02	<CV3a,9a> *20	
509	R61 065 418	Check valve	YBV-22Y9GMD-4	4	4	4	4	P639196X01	<CV4a,5a,7a,8a>	Chg.
510	R63 R43 418	Check valve	BCV-1005DYQ82	2	2	2	2	P639165X01	<CV6a,10a>	
511	R61 030 232	Valve block assy	4SV	1	1	1	1	KB00L126G04		
512	R61 002 540	Valve	VSAMH8SSCM-A	1	1	1	1	P636343X01	<(LP) BV1>	
513	R61 025 538	Valve	VSAMH8SSCM-LA1	1	1	1	1	P636353X01	<(HP) BV2>	Chg.
514	R63 027 232	Solenoid valve	VPV-L202D	1	1	1	1	P631296X01	<SV5b>	
515	R63 Y07 232	Solenoid valve	ATS-B7SMD-1	1	1	1	1	P631291X01	<SV9>	
516	R63 R34 413	Check joint L		2	2	2	2	P666004X02	<(HP)CJ1,(LP)CJ2>	
517	R61 008 425	Capillary tube assy		1	1	1	1	KB49H700G01	<CP2>	
518	R63 002 425	Capillary tube assy		1	1	1	1	KB49F229G01	<CP1>	
519	R61 022 454	Strainer	25.4D	1	1	1	1	KJ00P967G01	<ST1>	Chg.
520	R61 011 243	Solenoid coil	VPV-MOAQ540UA1	4	4	4	4	P472047X01	<SV1a,2,5b,5c>	
521	R61 Y21 243	Solenoid coil	STF-01AQ505UA1	1	1	1	1	P472028X01	<21S4a>	
522	R61 076 243	Solenoid coil	A20-1B02B-1	5	5	5	5	P472123X01	<SV4a,4b,4c,4d,9>	Chg.
523	R61 006 288	Pressure sensor	HP D173	1	1	1	1	KB00H904G09	<(HP) 63HS1>	
524	R61 007 288	Pressure sensor	LP D173	1	1	1	1	KB00H904G10	<(LP) 63LS>	
525	R61 056 208	Pressure switch	ACB-1UB28W	1	1	1	1	P426320X02	<63H1>	
526	R61 060 200	Thermistor		4	4	4	4	P418065X01	<TH3,5,6,7>	
527	R63 911 202	Thermistor		1	1	1	1	P425416X02	<TH4>	
528	R63 Y07 237	Belt heater	240V 45W	1	1	1	1	P493781X02	<CH11>	
529	R61 034 232	Solenoid valve	VPV-152DU5	2	2	2	2	P631294X01	<SV2,5c>	
530	R63 6A7 235	Solenoid valve	ACS-BPMD-8	4	4	4	4	P631310X01	<SV4a,4b,4c,4d>	
531	R61 465 480	Heat exchanger assy	3L	1		1		KB01T300G05		
532	R61 H40 480	Heat exchanger assy	3L BS		1		1	KB01T300G06		
533	R63 852 860	Rubber mount	For compressor	4	4	4	4	W897574H01		
534	R61 010 235	SV tightening element		1	1	1	1	W909209G01		Chg.
535	R61 012 151	SV block service parts kit		1	1	1	1	KB00H903G15	*17	Chg.
536	R61 005 151	Connecting pipe	9.52 with instructions *16	1	1	1	1	KB00H903G16	<CV4a,6a,8a,9a,10a> *18	
537	R61 001 310	Sensor holder		1	1	1	1	KB25B471H04		Chg.
538	R63 P90 232	Solenoid valve	VPV-152DQ5	1	1	1	1	P631277X01	<SV1a>	
539	R61 106 288	COMP shell kit J		1	1	1	1	KJ00K045G01	*19	
540	R61 017 262	ACC heater kit J1		1	1	1	1	KJ00K046G01	*19	
541	R61 T01 363	Sensor kit	96TJMU	1	1			KJ00K047G02	*19	
542	R61 T01 366	Sensor kit	96YJMU			1	1	KJ00K047G05	*19	
543	R61 126 418	Check valve assy		1	1	1	1	KL00R322G02	*15	Chg.
544	R61 094 418	Check valve	BCV-1810DY	2	2	2	2	P639170X01	<CV3a,9a> *21	

PURY-P120,P144TJMU-A(-BS) PURY-P120,P144YJMU-A(-BS)

FUNCTIONAL PARTS (3)

<To replace parts with the HEX removed>
Individual replacement of parts No.608, 609
and 645 is possible.

<To replace parts without the HEX removed> (*23,*24)
Remove the solenoid valve block assembly (Figure 1), take the check valve assembly
(see figure below) out of the unit, and replace parts No.636, 639 and 646.



*22 For how to attach part No.644, refer to the replacement instruction in the service handbook.

Actual external appearance of some service parts may differ from the figure.

*23 Refer to the replacement instructions provided with parts No. 636, 639 and 646 for details.

*24 A check valve and a sheet of replacement instructions are included with Service parts with instructions (No. 636, 639, 646).

*25 If "Equipped" label as shown in Figure 2 is attached on the unit, order the Compressor shell kit part No.640 and Accumulator heater kit part No.641. If it is not attached, order the Sensor kit part No.642 or 643.

*26 For the units manufactured after 2YW*****.

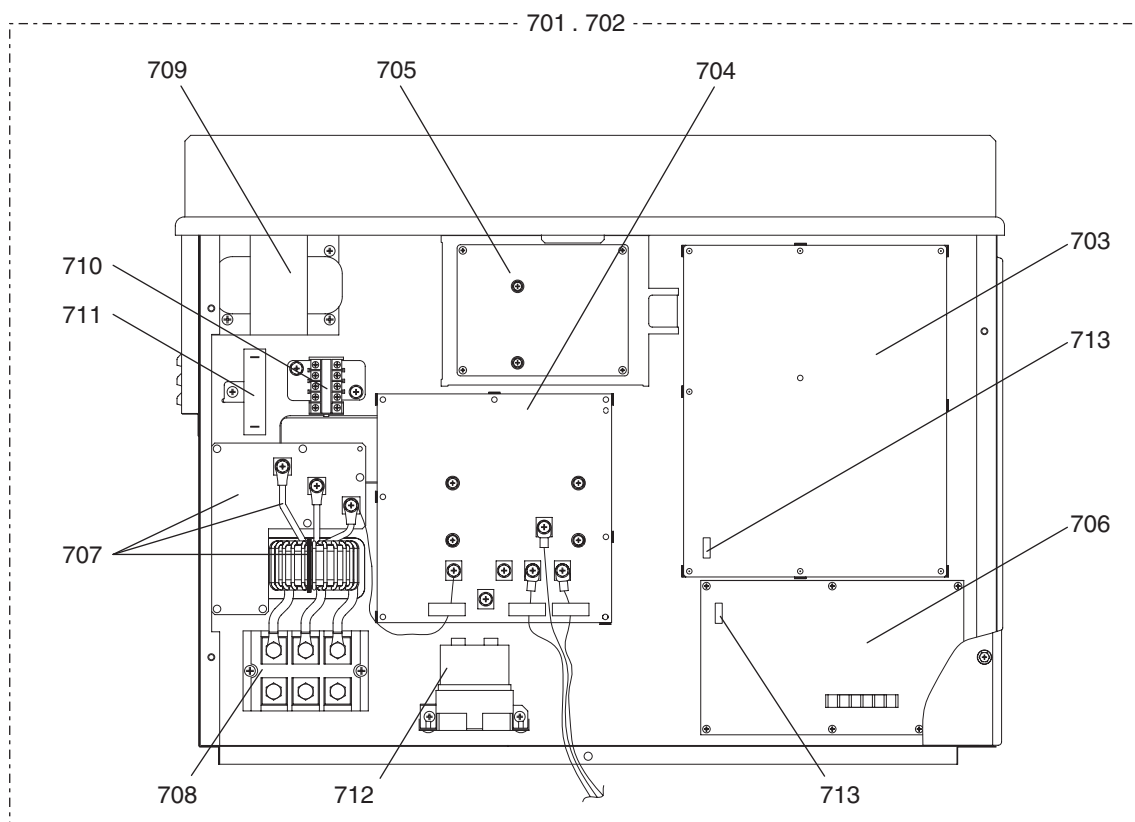
*27 For the units manufactured before 2XW*****.

DETAIL OF SERIAL NUMBER 01W00001

— RUNNING NUMBER
— STANDARD PRODUCTS
— MONTH OF MANUFACTURE:
1-9, X(OCTOBER), Y(NOVEMBER), Z(DECEMBER)
— YEAR(2010→0, 2011→1, 2012→2)

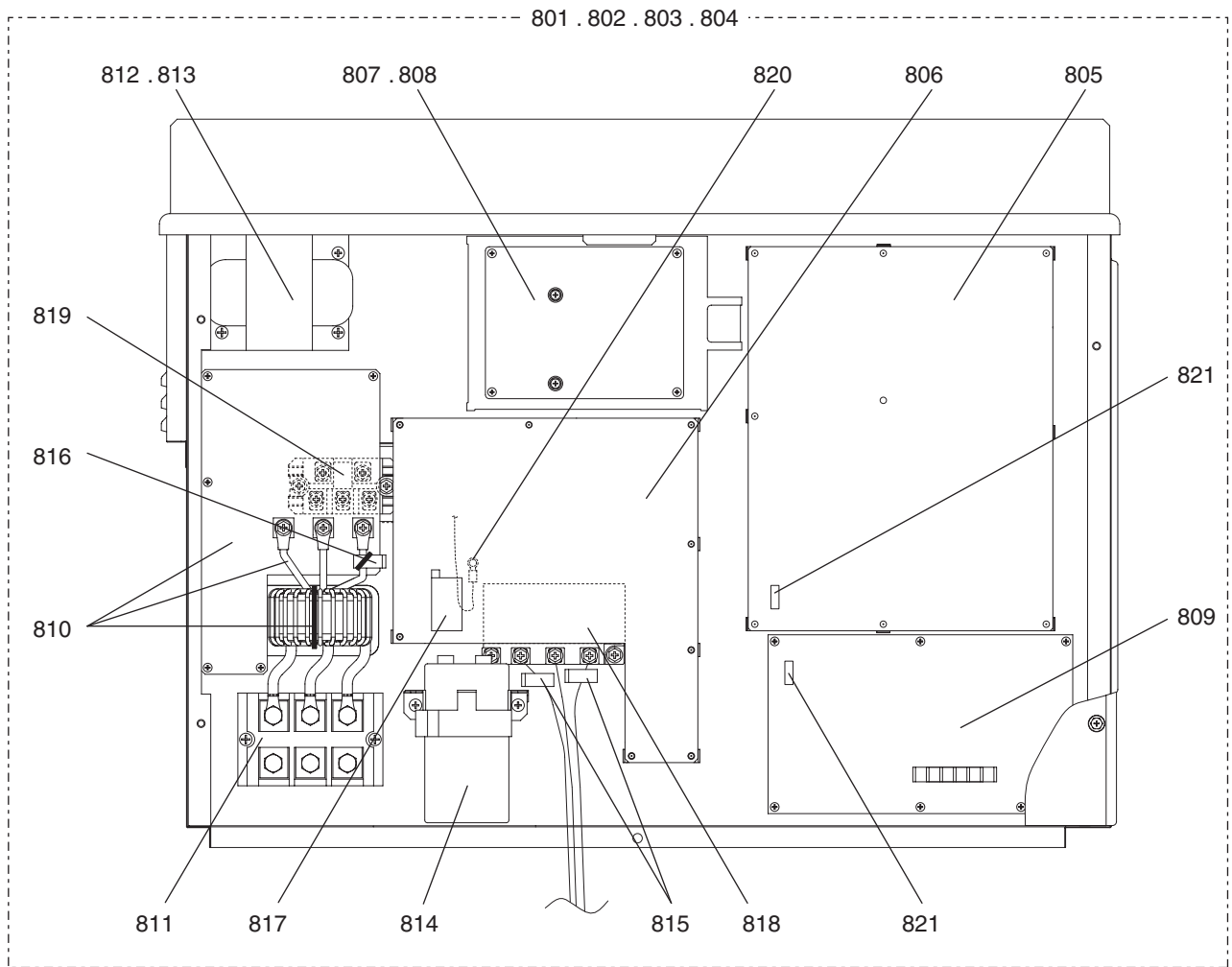
No.	Part No.	Part Name	Spec.	PURY-P120TJMU-A	PURY-P120YJMU-A-BS	PURY-P144TJMU-A	PURY-P144YJMU-A-BS	PURY-P120YJMU-A	PURY-P120YJMU-A-BS	Dwg. No.	Notes for the models	Revision info.
601	R69 069 478	Scroll compressor	HNB78FC-U	1	1	1	1			EP10109B09		
602	R69 193 478	Scroll compressor	HNB78FC-YE					1	1	EP10109B08		
603	R61 057 484	Accumulator assy		1		1		1		KB54B479G59		
604	R61 058 484	Accumulator assy	BS		1		1		1	KB54B479G46		
605	R61 022 487	Oil separator assy		1	1	1	1	1	1	KD00C083G01		
606	R63 Y05 154	Four way valve	STF-0731G	2	2	2	2	2	2	P633119X01	<21S4a,4b>	
607	R61 005 421	Two way valve	MHV-L1104S	1	1	1	1	1	1	P633136X01	<SV4c>	
608	R63 R43 418	Check valve	BCV-1005DYQ82	2	2	2	2	2	2	P639165X01	<CV6a,6b>	
609	R61 072 418	Check valve	BCV-1807DYQ2	10	10	10	10	10	10	P639218X02	<CV2a,2b,4a,4b,5a,5b,7a,7b,8a,8a> *26	
610	R61 065 418	Check valve	YBV-22Y9GMD-4	1	1	1	1	1	1	P639196X01	<CV3a>	Chg.
611	R61 038 232	Valve block assy		1	1	1	1	1	1	KB00T028G03		
612	R61 032 410	Ball valve	SBV10-002	1	1	1	1	1	1	KJ00S007G01	<(LP) BV1>	Chg.
613	R61 025 538	Valve	VSAMH8SSCM-LA1	1	1	1	1	1	1	P636353X01	<(HP) BV2>	Chg.
614	R63 Y07 232	Solenoid valve	ATS-B7SMD-1	1	1	1	1	1	1	P631291X01	<SV9>	
615	R63 P90 232	Solenoid valve	VPV-152DQ5	2	2	2	2	2	2	P631277X01	<SV1a,5c>	
616	R63 027 232	Solenoid valve	VPV-L202D	1	1	1	1	1	1	P631296X01	<SV5b>	
617	R63 R34 413	Check joint L		2	2	2	2	2	2	P666004X02	<(HP) CJ1,(LP) CJ2>	
618	R63 R55 425	Capillary tube assy		1	1	1	1	1	1	W905191G02	<CP1>	
619	R61 008 425	Capillary tube assy		1	1	1	1	1	1	KB49H700G01	<CP2>	
620	R61 022 454	Strainer	25.4D	1	1	1	1	1	1	KJ00P967G01	<ST1>	Chg.
621	R61 Y21 243	Solenoid coil	STF-01AQ505UA1	3	3	3	3	3	3	P472028X01	<21S4a,4b,SV4c>	
622	R61 076 243	Solenoid coil	A20-1B02B-1	4	4	4	4	4	4	P472123X01	<SV4a,4b,4d,9>	Chg.
623	R61 011 243	Solenoid coil	VPV-MOAQ540UA1	3	3	3	3	3	3	P472047X01	<SV1a,5b,5c>	
624	R61 124 288	Pressure sensor	HP D173	1	1	1	1	1	1	KB00H904G11	<(HP) 63HS1>	Chg.
625	R61 125 288	Pressure sensor	LP D173	1	1	1	1	1	1	KB00H904G12	<(LP) 63LS>	Chg.
626	R61 056 208	Pressure switch	ACB-1UB28W	1	1	1	1	1	1	P426320X02	<63H1>	
627	R61 060 200	Thermistor		4	4	4	4	4	4	P418065X01	<TH3,5,6,7>	
628	R63 911 202	Thermistor		1	1	1	1	1	1	P425416X02	<TH4>	
629	R63 Y07 237	Belt heater	240V 45W	1	1	1	1	1	1	P493781X02	<CH11>	
630	R61 H73 480	Heat exchanger assy L	2L	1		1		1		KD01C172G01		Chg.
631	R61 420 480	Heat exchanger assy L	2L BS		1		1		1	KD01C172G02		
632	R61 H74 480	Heat exchanger assy R	2L	1		1		1		KD01C173G01		Chg.
633	R61 H75 480	Heat exchanger assy R	2L BS		1		1		1	KD01C173G02		Chg.
634	R63 852 860	Rubber mount	For compressor	4	4	4	4	4	4	W897574H01		
635	R61 010 235	SV tightening element		1	1	1	1	1	1	W909209G01		Chg.
636	R61 006 151	Check valve	with instructions	1	1	1	1	1	1	KB00S879G08	<CV6a> *24	
637	R61 001 310	Sensor holder		1	1	1	1	1	1	KB25B471H04		Chg.
638	R63 6A7 235	Solenoid valve	ACS-BPMD-8	3	3	3	3	3	3	P631310X01	<SV4a,4b,4d>	
639	R61 073 418	Check valve	with instructions	3	3	3	3	3	3	KB00S879G39	<CV4a,8a,9a> *24,26	
640	R61 106 288	COMP shell kit J		1	1	1	1	1	1	KJ00K045G01	*25	
641	R61 018 262	ACC heater kit J2		1	1	1	1	1	1	KJ00K046G02	*25	
642	R61 T01 364	Sensor kit	120TJMU	1	1	1	1			KJ00K047G03	*25	
643	R61 T01 367	Sensor kit	120YJMU					1	1	KJ00K047G06	*25	
644	R61 150 418	Check valve assy		1	1	1	1	1	1	KL00R323G02	*22	Chg.
645	R61 094 418	Check valve	BCV-1810DY	10	10	10	10	10	10	P639170X01	<CV2a,2b,4a,4b,5a,5b,7a,7b,8a,8a> *27	

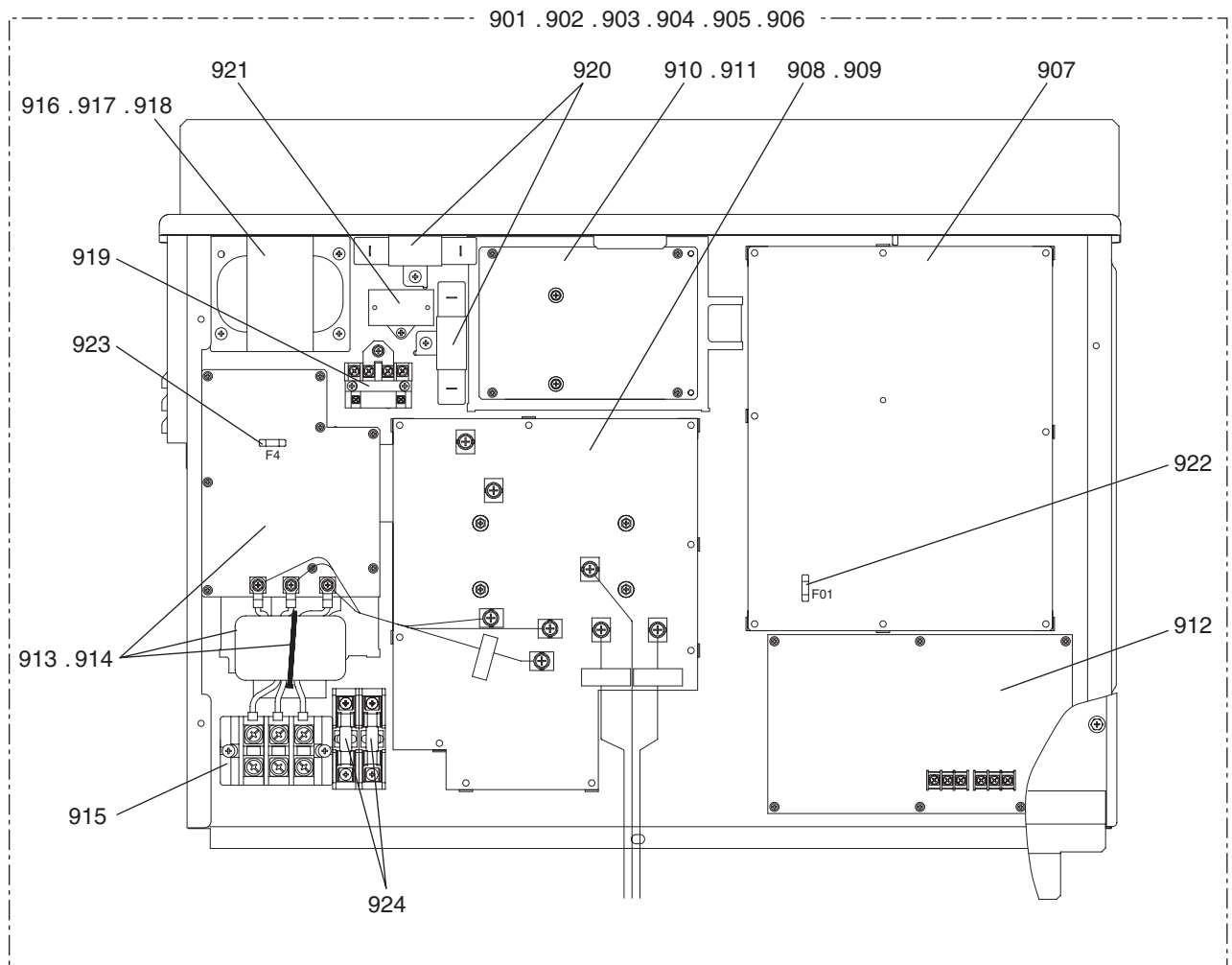
No.	Part No.	Part Name	Spec.	PURY-P144YJMU-A	PURY-P144TJMU-A-BS					Dwg. No.	Notes for the models	Revision info.
601	R69 069 478	Scroll compressor	HNB78FC-U							EP10109B09		
602	R69 193 478	Scroll compressor	HNB78FC-YE	1	1					EP10109B08		
603	R61 057 484	Accumulator assy		1						KB54B479G59		
604	R61 058 484	Accumulator assy	BS		1					KB54B479G46		
605	R61 022 487	Oil separator assy		1	1					KD00C083G01		
606	R63 Y05 154	Four way valve	STF-0731G	2	2					P633119X01	<21S4a,4b>	
607	R61 005 421	Two way valve	MHV-L1104S	1	1					P633136X01	<SV4c>	
608	R63 R43 418	Check valve	BCV-1005DYQ82	2	2					P639165X01	<CV6a,6b>	
609	R61 072 418	Check valve	BCV-1807DYQ2	10	10					P639218X02	<CV2a,2b,4a,4b,5a,5b,7a,7b,8a,8a> *26	
610	R61 065 418	Check valve	YBV-22Y9GMD-4	1	1					P639196X01	<CV3a>	Chg.
611	R61 038 232	Valve block assy		1	1					KB00T028G03		
612	R61 032 410	Ball valve	SBV10-002	1	1					KJ00S007G01	<(LP) BV1>	Chg.
613	R61 025 538	Valve	VSAMH8SSCM-LA1	1	1					P636353X01	<(HP) BV2>	Chg.
614	R63 Y07 232	Solenoid valve	ATS-B7SMD-1	1	1					P631291X01	<SV9>	
615	R63 P90 232	Solenoid valve	VPV-152DQ5	2	2					P631277X01	<SV1a,5c>	
616	R63 027 232	Solenoid valve	VPV-L202D	1	1					P631296X01	<SV5b>	
617	R63 R34 413	Check joint L		2	2					P666004X02	<(HP) CJ1,(LP) CJ2>	
618	R63 R55 425	Capillary tube assy		1	1					W905191G02	<CP1>	
619	R61 008 425	Capillary tube assy		1	1					KB49H700G01	<CP2>	
620	R61 022 454	Strainer	25.4D	1	1					KJ00P967G01	<ST1>	Chg.
621	R61 Y21 243	Solenoid coil	STF-01AQ505UA1	3	3					P472028X01	<21S4a,4b,SV4c>	
622	R61 076 243	Solenoid coil	A20-1B02B-1	4	4					P472123X01	<SV4a,4b,4d,9>	Chg.
623	R61 011 243	Solenoid coil	VPV-MOAQ540UA1	3	3					P472047X01	<SV1a,5b,5c>	
624	R61 124 288	Pressure sensor	HP D173	1	1					KB00H904G11	<(HP) 63HS1>	Chg.
625	R61 125 288	Pressure sensor	LP D173	1	1					KB00H904G12	<(LP) 63LS>	Chg.
626	R61 056 208	Pressure switch	ACB-1UB28W	1	1					P426320X02	<63H1>	
627	R61 060 200	Thermistor		4	4					P418065X01	<TH3,5,6,7>	
628	R63 911 202	Thermistor		1	1					P425416X02	<TH4>	
629	R63 Y07 237	Belt heater	240V 45W	1	1					P493781X02	<CH11>	
630	R61 H73 480	Heat exchanger assy L	2L	1						KD01C172G01		Chg.
631	R61 420 480	Heat exchanger assy L	2L BS		1					KD01C172G02		
632	R61 H74 480	Heat exchanger assy R	2L	1						KD01C173G01		Chg.
633	R61 H75 480	Heat exchanger assy R	2L BS		1					KD01C173G02		Chg.
634	R63 852 860	Rubber mount	For compressor	4	4					W897574H01		
635	R61 010 235	SV tightening element		1	1					W909209G01		Chg.
636	R61 006 151	Check valve	with instructions	1	1					KB00S879G08	<CV6a> *24	
637	R61 001 310	Sensor holder		1	1					KB25B471H04		Chg.
638	R63 6A7 235	Solenoid valve	ACS-BPMD-8	3	3					P631310X01	<SV4a,4b,4d>	
639	R61 073 418	Check valve	with instructions	3	3					KB00S879G39	<CV4a,8a,9a> *24,26	
640	R61 106 288	COMP shell kit J		1	1					KJ00K045G01	*25	
641	R61 018 262	ACC heater kit J2		1	1					KJ00K046G02	*25	
642	R61 T01 364	Sensor kit	120TJMU							KJ00K047G03	*25	
643	R61 T01 367	Sensor kit	120YJMU	1	1					KJ00K047G06	*25	
644	R61 150 418	Check valve assy		1	1					KL00R323G02	*22	Chg.
645	R61 094 418	Check valve	BCV-1810DY	10	10					P639170X01	<CV2a,2b,4a,4b,5a,5b,7a,7b,8a,8a> *27	



PURY-P96TJMU-A(-BS)
PURY-P120TJMU-A(-BS)
PURY-P144TJMU-A(-BS)

CONTROL BOX PARTS (2)





mitsubishi
MITSUBISHI ELECTRIC CORPORATION

BWE0933G (20230630)