

SERVICE PARTS LIST FOR MITSUBISHI ELECTRIC PACKAGED AIR-CONDITIONERS

Series : PURY-P·Z(S)KMU-A(-BS)

For use with the R410A

REVISED

Nov. 2019

BWE01525C

INDEX

PURY-P72ZKMU-A
PURY-P72ZKMU-A-BS
PURY-P96ZKMU-A
PURY-P96ZKMU-A-BS
PURY-P120ZKMU-A
PURY-P120ZKMU-A-BS
PURY-P144ZKMU-A
PURY-P144ZKMU-A-BS

Part information update day : 2019/10/28

Please change the old catalog (issued Aug. 2019, No.BWE01525B) to this new catalog.
Content of revision : Some of parts are changed.



The Package name list

PURY-P168ZSKMU-A(-BS) [PURY-P72ZKMU-A (-BS)+PURY-P96ZKMU-A (-BS)]

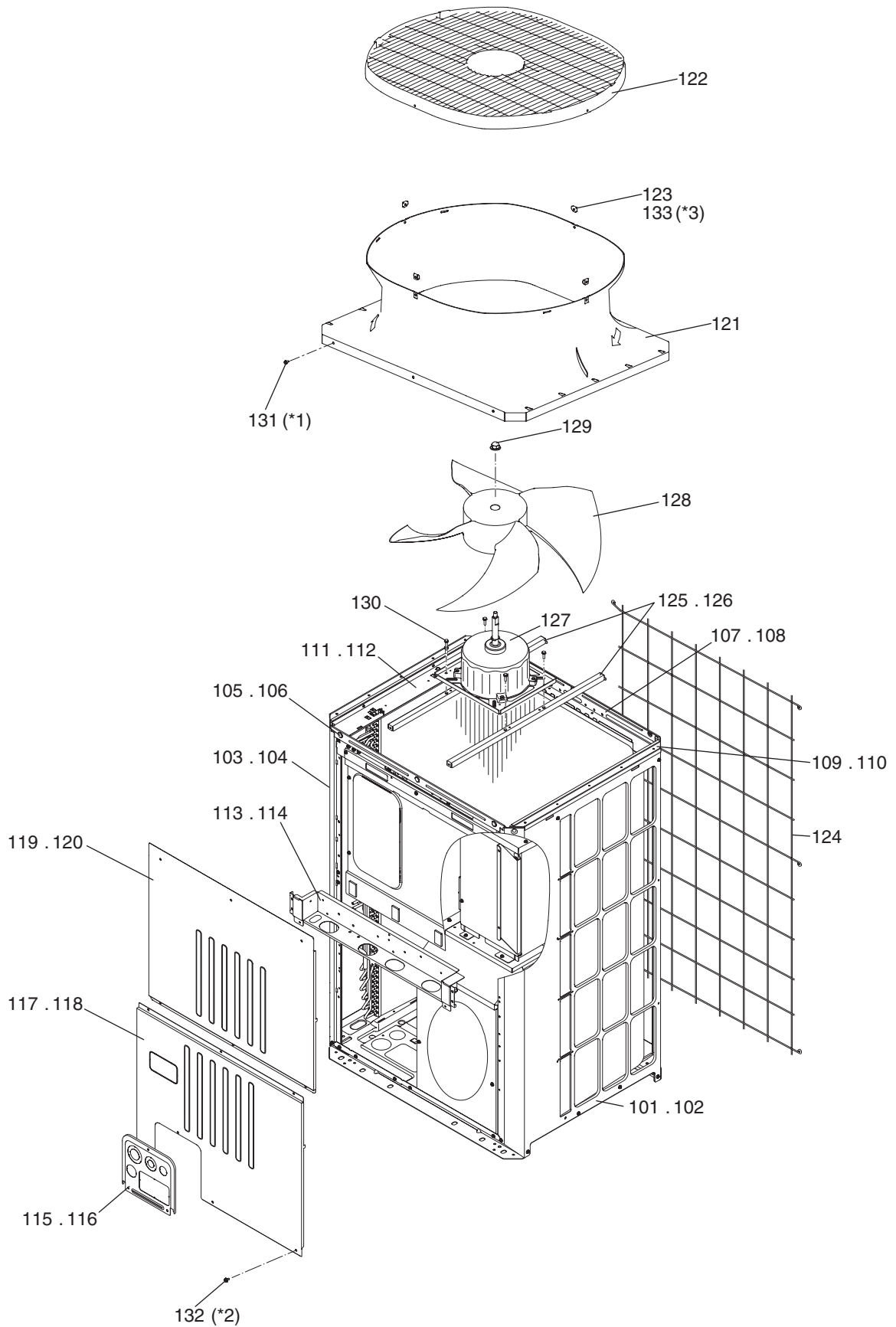
PURY-P192ZSKMU-A(-BS) [PURY-P96ZKMU-A (-BS)+PURY-P96ZKMU-A (-BS)]

PURY-P216ZSKMU-A(-BS) [PURY-P96ZKMU-A (-BS)+PURY-P120ZKMU-A (-BS)]

PURY-P240ZSKMU-A(-BS) [PURY-P120ZKMU-A (-BS)+PURY-P120ZKMU-A (-BS)]

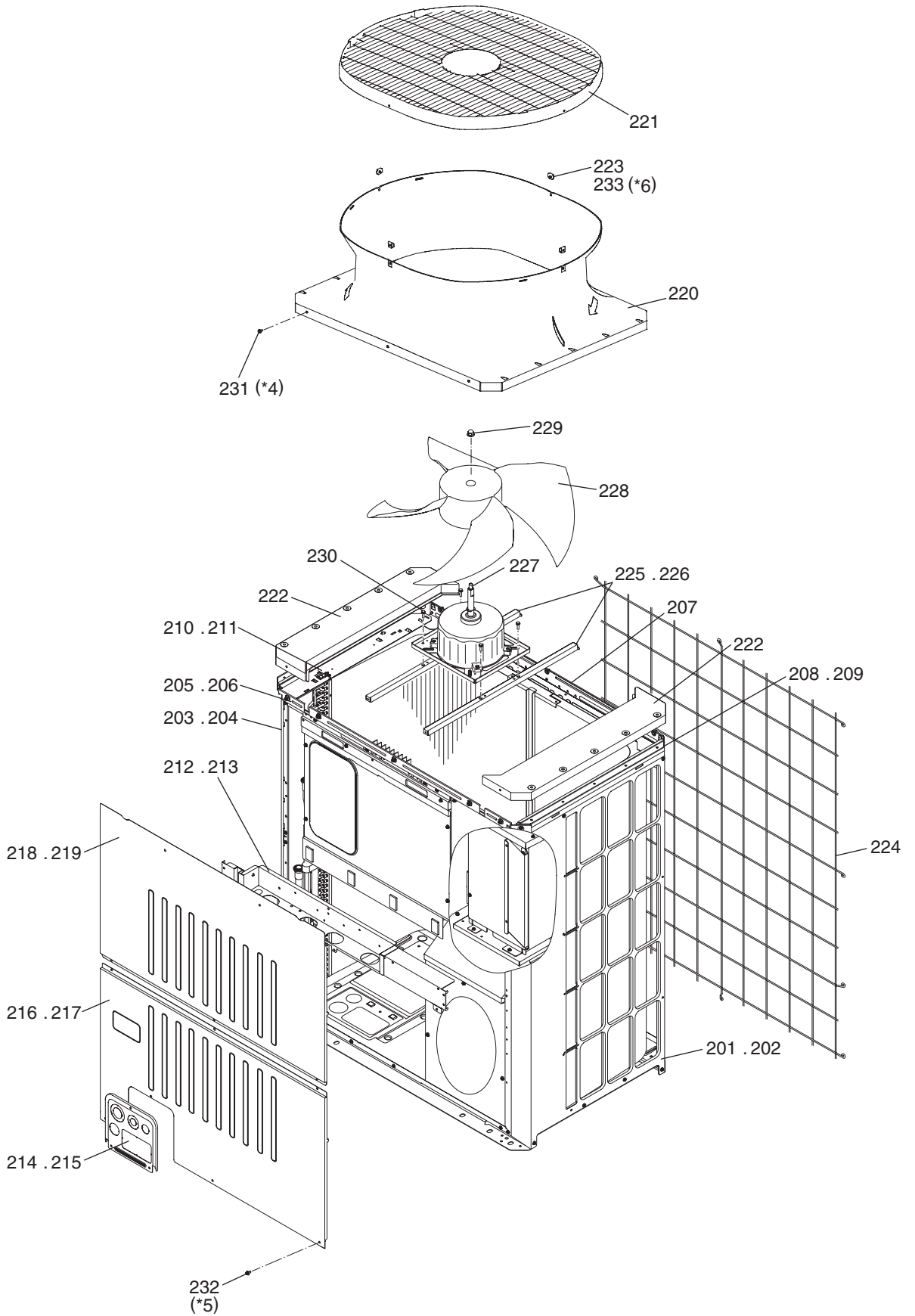
PURY-P264ZSKMU-A(-BS) [PURY-P120ZKMU-A (-BS)+PURY-P144ZKMU-A (-BS)]

PURY-P288ZSKMU-A(-BS) [PURY-P144ZKMU-A (-BS)+PURY-P144ZKMU-A (-BS)]



- *1 20 WFT Screws (part No.131)
- *2 124 H Screws (part No.132)
- *3 4 WFT Screws (part No.133)

No.	Part No.	Part Name	Spec.	PURY-P72ZKMU-A	PURY-P72ZKMU-A-BS						Dwg. No.	Notes for the models	Revision info.
101	R61 080 661	Panel R		1							KS00C722G01		
102	R61 081 661	Panel R	BS		1						KS00C722G02		
103	R61 082 661	Panel L		1							KS00C721G01		
104	R61 083 661	Panel L	BS		1						KS00C721G02		
105	R61 001 161	Frame F		1							KD02G738H02		
106	R61 005 161	Frame F	BS		1						KD02G738G07		
107	R61 008 160	Frame assy B		1							KJ00C354G01		
108	R61 009 160	Frame assy B	BS		1						KJ00C354G02		
109	R61 096 162	Frame assy LR		1							KJ00C486G03		
110	R61 097 162	Frame assy LR	BS		1						KJ00C486G04		
111	R61 098 162	Frame assy L		1							KJ00C488G03		
112	R61 099 162	Frame assy L	BS		1						KJ00C488G04		
113	R63 077 162	Frame assy M		1							KD00L159G07		
114	R63 080 162	Frame assy M	BS		1						KD00L159G08		
115	R61 120 690	Piping cover		1							KB02L912G07		
116	R61 121 690	Piping cover	BS		1						KB02L912G08		
117	R61 208 651	Panel FB		1							KB02J835H06		
118	R61 209 651	Panel FB	BS		1						KB02J835G10		
119	R61 177 651	Panel FU		1							KB02J839H01		
120	R61 178 651	Panel FU	BS		1						KB02J839G02		
121	R61 004 119	Bell mouth		1	1						KB25A368G01		
122	R11 003 009	Fan guard		1	1						KB25V019G01		
123	R61 009 669	Plate fan guard		4	4						KD02D205H02		
124	R63 008 611	Fin guard B		1	1						KB07N273G01		
125	R61 016 140	Base fan		2							KD02D026H01		
126	R61 017 140	Base fan	BS		2						KD02D026G04		
127	R61 295 220	Motor	920W 415V	1	1						KB61A888G04		
128	R61 001 300	Fan		1	1						KB25A009H05		
129	R63 4H6 122	Box nut	M12 CH	1	1						P552000X01		
130	R63 014 087	Upset screw	M6 x 10	4	4						P516047X01		
131	R63 006 087	WFT screw	M5 x 12 (30pcs)	1	1						KB00H418G01	*1	
132	R61 048 087	H screw	M5 x 10 KNURLED (30pcs)	5	5						KB00H418G14	*2	
133	R63 029 087	WFT screw	M5 x 16 (10pcs)	1	1						KD00H026G01	*3	

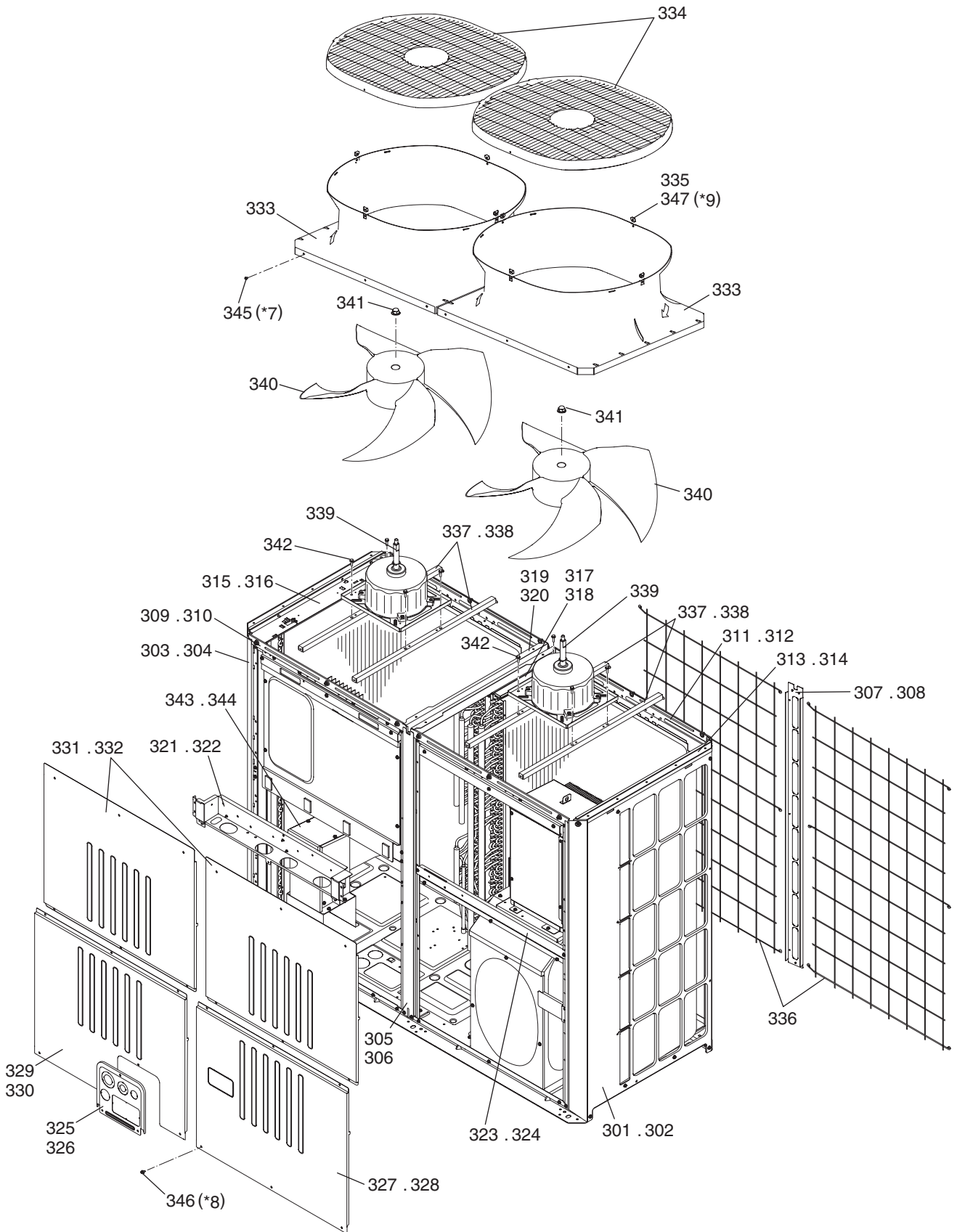


*4 32 WFT Screws (part No.231)
*5 126 H Screws (part No.232)
*6 4 WFT Screws (part No.233)

No.	Part No.	Part Name	Spec.	PURY-P96ZKMU-A	PURY-P96ZKMU-A-BS					Dwg. No.	Notes for the models	Revision info.
201	R61 080 661	Panel R		1						KS00C722G01		
202	R61 081 661	Panel R	BS		1					KS00C722G02		
203	R61 082 661	Panel L		1						KS00C721G01		
204	R61 083 661	Panel L	BS		1					KS00C721G02		
205	R61 003 161	Frame F		1						KD02G739H02		
206	R61 006 161	Frame F	BS		1					KD02G739G07		
207	R61 124 162	Frame assy B		1	1					KJ00D419G02		
208	R61 096 162	Frame assy LR		1						KJ00C486G03		
209	R61 097 162	Frame assy LR	BS		1					KJ00C486G04		
210	R61 098 162	Frame assy L		1						KJ00C488G03		
211	R61 099 162	Frame assy L	BS		1					KJ00C488G04		
212	R61 125 162	Frame assy M		1						KD00L235G07		
213	R61 084 162	Frame assy M	BS		1					KD00L235G05		
214	R61 120 690	Piping cover		1						KB02L912G07		
215	R61 121 690	Piping cover	BS		1					KB02L912G08		
216	R61 210 651	Panel FB		1						KB02J836H03		
217	R61 211 651	Panel FB	BS		1					KB02J836G05		
218	R61 185 651	Panel FU		1						KB02J840H01		
219	R61 186 651	Panel FU	BS		1					KB02J840G02		
220	R61 004 119	Bell mouth		1	1					KB25A368G01		
221	R11 003 009	Fan guard		1	1					KB25V019G01		
222	R61 008 118	Fan guard cover		2	2					KB25J827G01		
223	R61 009 669	Plate fan guard		4	4					KD02D205H02		
224	R61 009 611	Fin guard B		1	1					KB07N274G01		
225	R61 016 140	Base fan		2						KD02D026H01		
226	R61 017 140	Base fan	BS		2					KD02D026G04		
227	R61 295 220	Motor	920W 415V	1	1					KB61A888G04		
228	R61 001 300	Fan		1	1					KB25A009H05		
229	R63 4H6 122	Box nut	M12 CH	1	1					P552000X01		
230	R63 014 087	Upset screw	M6 x 10	4	4					P516047X01		
231	R63 006 087	WFT Screw	M5 x 12 (30pcs)	2	2					KB00H418G01	*4	
232	R61 048 087	H Screw	M5 x 10 KNURLED (30pcs)	5	5					KB00H418G14	*5	
233	R63 029 087	WFT Screw	M5 x 16 (10pcs)	1	1					KD00H026G01	*6	

PURY-P120ZKMU-A(-BS)
 PURY-P144ZKMU-A(-BS)

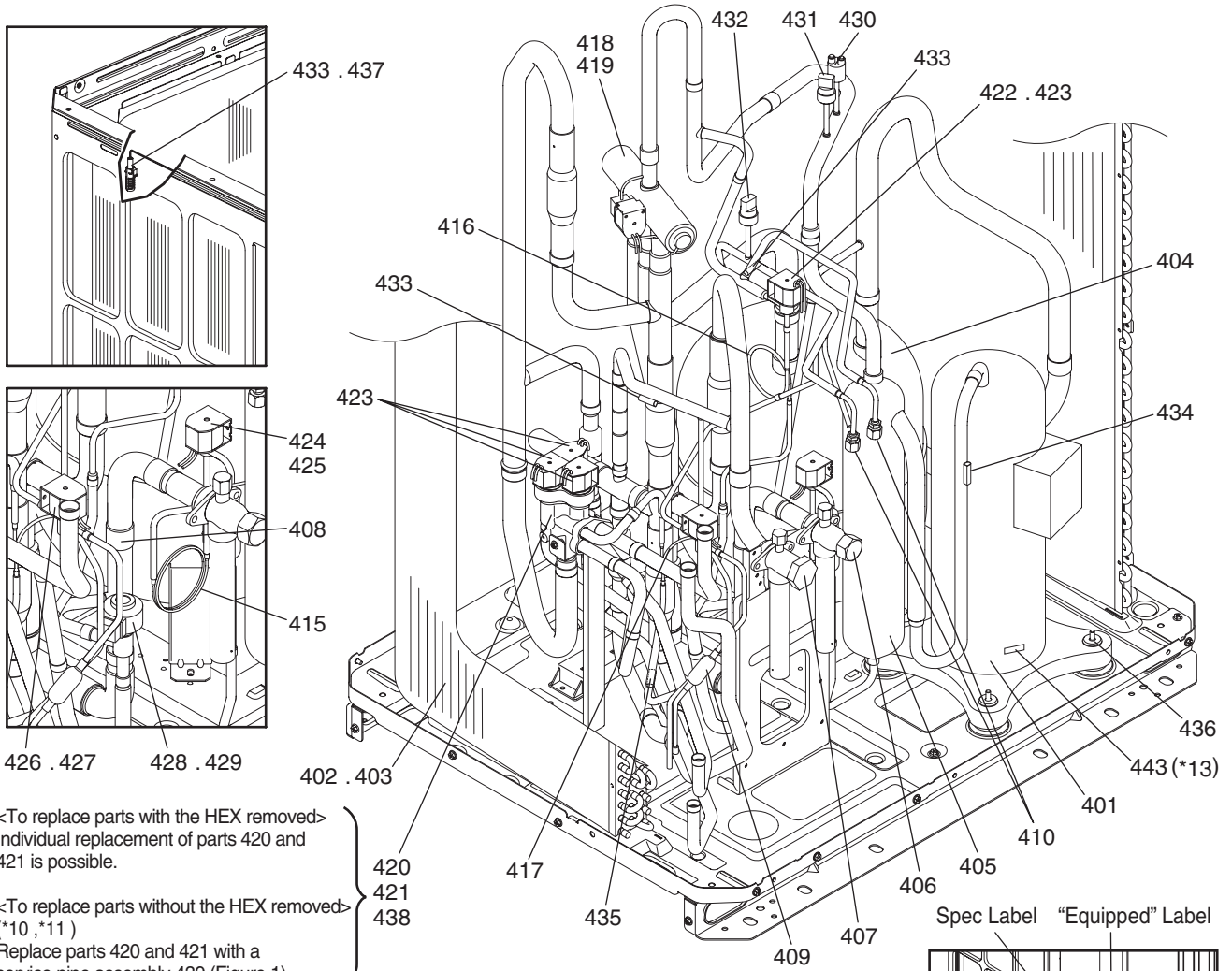
EXTERNAL PARTS & BLOWER PARTS (3)



- *7 37 WFT Screws (part No.345)
- *8 172 H Screws (part No.346)
- *9 8 WFT Screws (part No.347)

No.	Part No.	Part Name	Spec.	PURY-P120ZKMU-A	PURY-P120ZKMU-A-BS	PURY-P144ZKMU-A	PURY-P144ZKMU-A-BS	Dwg. No.	Notes for the models	Revision info.
301	R61 080 661	Panel R		1		1		KS00C722G01		
302	R61 081 661	Panel R	BS		1		1	KS00C722G02		
303	R61 082 661	Panel L		1		1		KS00C721G01		
304	R61 083 661	Panel L	BS		1		1	KS00C721G02		
305	R61 022 626	Pillar assy MF		1		1		KD00R845G09		
306	R61 023 626	Pillar assy MF	BS		1		1	KD00R845G10		
307	R61 030 626	Pillar MB		1		1		KD02M109G01		
308	R61 031 626	Pillar MB	BS		1		1	KD02M109G02		
309	R61 061 162	Frame assy F	XL	1		1		KD00L182G03		
310	R61 094 162	Frame assy F	XL BS		1		1	KD00L182G07		
311	R61 012 160	Frame assy B	XL	1		1		KJ00C487G01		
312	R61 013 160	Frame assy B	XL BS		1		1	KJ00C487G02		
313	R61 096 162	Frame assy LR		1		1		KJ00C486G03		
314	R61 097 162	Frame assy LR	BS		1		1	KJ00C486G04		
315	R61 098 162	Frame assy L		1		1		KJ00C488G03		
316	R61 099 162	Frame assy L	BS		1		1	KJ00C488G04		
317	R61 012 499	Plate HEX assy	XL	1		1		KJ00C692G01		
318	R61 013 499	Plate HEX assy	XL BS		1		1	KJ00C692G02		
319	R61 072 162	Frame MT		1		1		KB02J833H01		
320	R61 073 162	Frame MT	BS		1		1	KB02J833G01		
321	R61 090 162	Frame assy M	XL	1		1		KD00L159G11		
322	R61 089 162	Frame assy M	XL BS		1		1	KD00L159G12		
323	R61 058 162	Frame MR	XL	1		1		KD02G743H04		
324	R61 059 162	Frame MR	XL BS		1		1	KD02G743G02		
325	R61 120 690	Piping cover		1		1		KB02L912G07		
326	R61 121 690	Piping cover	BS		1		1	KB02L912G08		
327	R61 212 651	Panel FBR	XL	1		1		KB02J838H04		
328	R61 213 651	Panel FBR	XL BS		1		1	KB02J838G06		
329	R61 182 651	Panel FBL	XL	1		1		KB02J837H02		
330	R61 183 651	Panel FBL	XL BS		1		1	KB02J837G04		
331	R61 177 651	Panel FU		2		2		KB02J839H01		
332	R61 178 651	Panel FU	BS		2		2	KB02J839G02		
333	R61 005 119	Bell mouth	XL	2	2	2	2	KB25A367G01		
334	R11 003 009	Fan guard		2	2	2	2	KB25V019G01		
335	R61 009 669	Plate Fan guard		8	8	8	8	KD02D205H02		
336	R61 010 611	Fin guard B		2	2	2	2	KB07N272G01		
337	R61 016 140	Base fan		4		4		KD02D026H01		
338	R61 017 140	Base fan	BS		4		4	KD02D026G04		
339	R61 295 220	Motor	920W 415V	2	2	2	2	KB61A888G04		
340	R61 001 300	Fan		2	2	2	2	KB25A009H05		
341	R63 4H6 122	Box nut	M12 CH	2	2	2	2	P552000X01		
342	R63 014 087	Upset Screw	M6 x 10	8	8	8	8	P516047X01		
343	R61 043 260	Transformer assy		1		1		KS00C755G03		
344	R61 044 260	Transformer assy	BS		1		1	KS00C755G04		
345	R63 006 087	WFT Screw	M5 x 12 (30pcs)	2	2	2	2	KB00H418G01	*7	

No.	Part No.	Part Name	Spec.	PURY-P120ZKMU-A	PURY-P120ZKMU-A-BS	PURY-P144ZKMU-A	PURY-P144ZKMU-A-BS		Dwg. No.	Notes for the models	Revision info.
346	R61 048 087	H Screw	M5 x 10 KNURLED (30pcs)	6	6	6	6		KB00H418G14	*8	
347	R63 029 087	WFT Screw	M5 x 16 (10pcs)	1	1	1	1		KD00H026G01	*9	



<To replace parts with the HEX removed>
 Individual replacement of parts 420 and 421 is possible.

<To replace parts without the HEX removed>
 (*10, *11)
 Replace parts 420 and 421 with a service pipe assembly 439 (Figure 1).

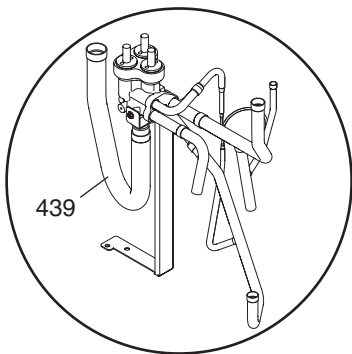


Figure 1

<To replace parts without the HEX removed>
 (*10, *12)
 Remove the solenoid valve block assembly (Figure 1), take the check valve assembly (see figure right) out of the unit, and replace parts 440, 441, 442.

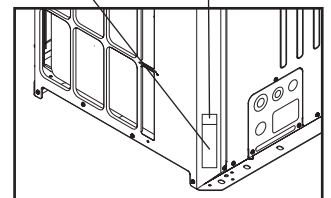
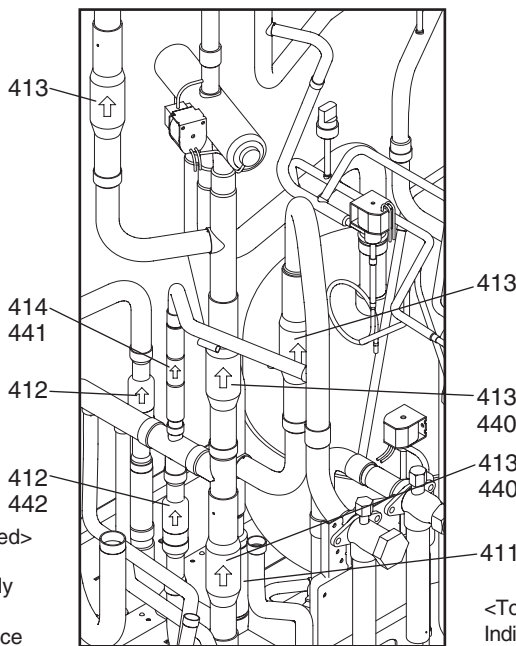
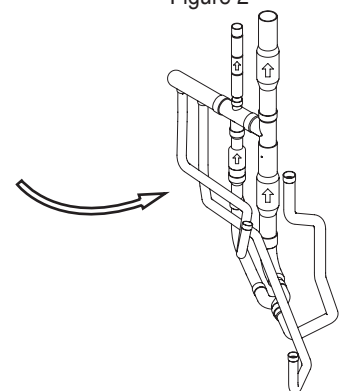


Figure 2



<To replace parts with the HEX removed>
 Individual replacement of parts 412, 413, and 414 is possible.

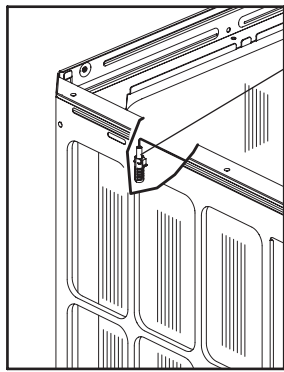
*10 Refer to the replacement instructions provided with parts 439, 440, 441, and 442 for details.

*11 A solenoid valve block assy and a sheet of replacement instructions are included with Solenoid valve block service parts kit (No. 439).

*12 A check valve and a sheet of replacement instructions are included with Service parts with instructions (No. 440, 441, 442).

*13 If "Equipped" label as shown in Figure 2 is attached on the unit, order the Compressor shell kit part No.443. If it is not attached, order the Sensor kit part No. 444.

No.	Part No.	Part Name	Spec.	PURY-P72ZKMU-A	PURY-P72ZKMU-A-BS					Dwg. No.	Notes for the models	Revision info.
401	R69 199 478	Scroll compressor	ENB62FB3-YE	1	1					EP10132B23		Chg.
402	R61 A31 480	Heat exchanger	3L S	1						KJ01C626G07		
403	R61 A32 480	Heat exchanger	3L S BS		1					KJ01C626G08		
404	R61 038 484	Accumulator assy		1	1					KB54B375G34		
405	R61 044 487	Oil separator assy		1	1					KJ00L830G02		
406	R61 002 540	Ball valve	VSAMH8SSCM-A	1	1					P636343X01	<BV1>	
407	R61 025 538	Valve	VSAMH8SSCM-LA1	1	1					P636353X01	<BV2>	
408	R61 008 454	Strainer	25.4D	1	1					KB48K250G01	<ST1>	
409	R63 155 454	Strainer	6.35D	1	1					W882822G01	<ST18>	
410	R61 004 413	Check joint L		2	2					P666013X01	<CJ1,CJ2>	
411	R61 013 418	Check valve	YBV-22YA7GMD-1	1	1					P633132X01	<CV2a>	
412	R61 019 418	Check valve	UCV-A1507DQ4	2	2					P633135X01	<CV3a,CV9a>	
413	R61 065 418	Check valve	YBV-22Y9GMD-2	4	4					P639183X02	<CV4a,CV5a,CV7a,CV8a>	
414	R61 071 418	Check valve	YCV11-007	1	1					P639219X01	<CV6a>	
415	R63 002 425	Capillary tube assy		1	1					KB49F229G01	<CP1>	
416	R61 008 425	Capillary tube assy		1	1					KB49H700G01	<CP2>	
417	R61 022 425	Capillary tube assy		1	1					KD49F641G01	<CP3>	
418	R61 013 403	Four way valve	STF-H0731	1	1					P633130X01	<21S4a>	
419	R61 040 243	Four way valve coil	STF-H01AQ1969UA1	1	1					P472095X01	<21S4a>	
420	R61 038 232	Valve block assy	3SV	1	1					KB00T028G03		
421	R63 6A7 235	Solenoid valve	ACS-BPMD-8	3	3					P631310X01	<SV4a,SV4b,SV4d>	
422	R63 Y07 232	Solenoid valve	ATS-B7SMD-1	1	1					P631291X01	<SV9>	
423	R63 6A7 243	Solenoid valve coil	A20-1B02B-1	4	4					P472010X01	<SV4a,SV4b,SV4d,SV9>	
424	R63 046 232	Solenoid valve	FDFA277	1	1					P631312X01	<SV1a>	
425	R61 029 243	Solenoid valve coil	FQ-D808	1	1					P472086X01	<SV1a>	
426	R63 027 232	Solenoid valve	VPV-L202D	1	1					P631296X01	<SV5b>	
427	R61 011 243	Solenoid valve coil	VPV-MOAQ540UA1	1	1					P472047X01	<SV5b>	
428	R61 107 401	Linear expansion valve	PAM-BB0YGMD-2	1	1					KR50C486H01	<LEV5a>	
429	R61 030 243	Linear expansion valve coil	PAM-MD12MD-6	1	1					P472081X01	<LEV5a>	
430	R61 056 208	Pressure switch	ACB-1UB28W	1	1					P426320X02	<63H1>	
431	R63 049 288	Pressure sensor	HP	1	1					KB00H904G20	<63HS1>	
432	R63 050 288	Pressure sensor	LP	1	1					KB00H904G21	<63LS>	
433	R61 060 200	Thermistor		3	3					P418065X01	<TH3,TH5,TH7>	
434	R63 911 202	Thermistor		1	1					P425416X02	<TH4>	
435	R63 800 202	Thermistor		1	1					P425494X01	<TH6>	
436	R63 852 860	Rubber mount		4	4					W897574H01	For compressor	
437	R61 001 310	Sensor holder		1	1					KB25B471G02		
438	R63 6A7 245	SV tightening element		1	1					W909209G01		
439	R61 087 232	SV block service parts kit		1	1					KD00U820G19	*11	
440	R61 059 418	Check valve 1	with instructions	2	2					KD00U820G21	*12 <CV4a,CV8a>	
441	R61 124 418	Check valve 2	with instructions	1	1					KD00U820G35	*12 <CV6a>	
442	R61 061 418	Check valve 3	with instructions	1	1					KD00U820G23	*12 <CV9a>	
443	R61 107 288	COMP shell kit KL		1	1					KJ00K045G02	*13	
444	R61 T01 395	Sensor kit	72ZKMU	1	1					KJ00K047G20	*13	



<To replace parts with the HEX removed>
Individual replacement of parts 520 and 521 is possible.

<To replace parts without the HEX removed> (*14, *15)
Replace parts 520 and 521 with a service pipe assembly 539 (Figure 1).

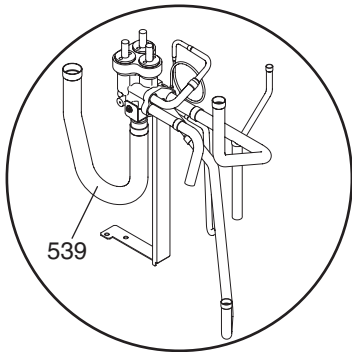


Figure 1

<To replace parts without the HEX removed> (*14, *16)
Remove the solenoid valve block assembly (Figure 1), take the check valve assembly (see figure right) out of the unit, and replace parts 540, 541, 542.

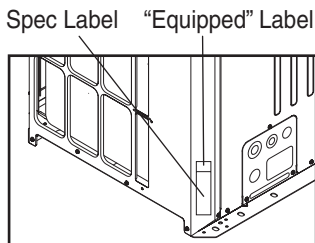
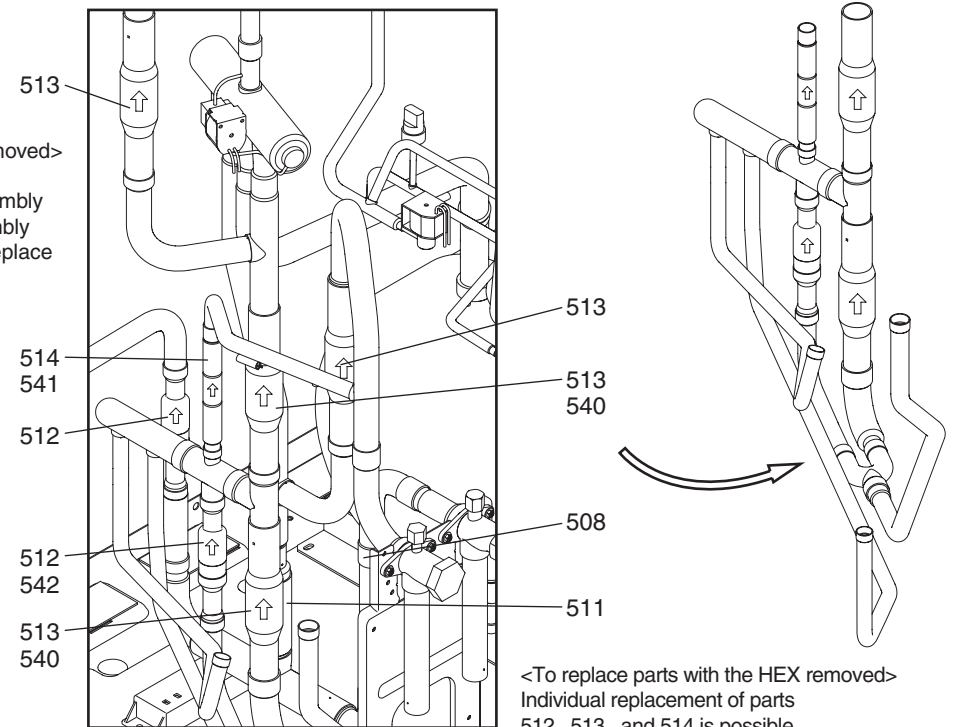
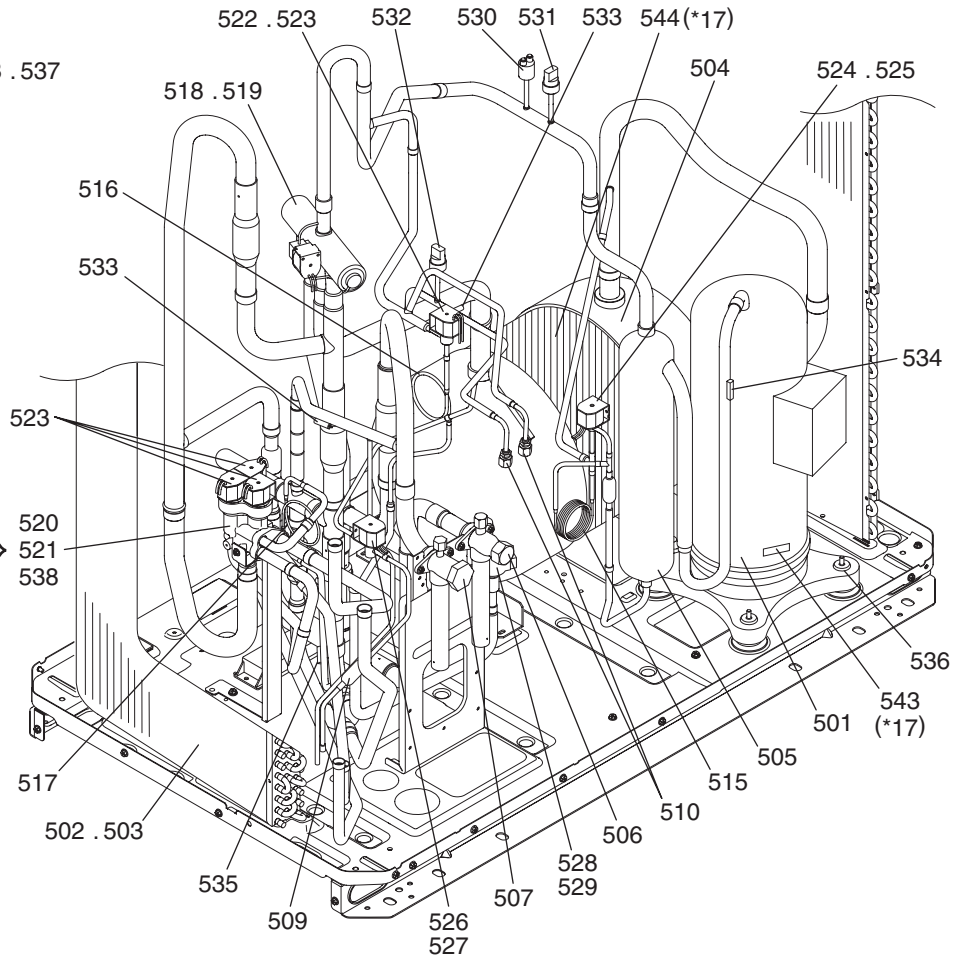


Figure 2



<To replace parts with the HEX removed>
Individual replacement of parts 512, 513, and 514 is possible.

*14 Refer to the replacement instructions provided with parts 539, 540, 541, and 542 for details.

*15 A solenoid valve block assy and a sheet of replacement instructions are included with Solenoid valve block service parts kit (No. 539).

*16 A check valve and a sheet of replacement instructions are included with Service parts with instructions (No. 540, 541, 542).

*17 If "Equipped" label as shown in Figure 2 is attached on the unit, order the Compressor shell kit part No.543 and Accumulator heater kit part No.544. If it is not attached, order the Sensor kit part No. 545.

No.	Part No.	Part Name	Spec.	PURY-P96ZKMU-A	PURY-P96ZKMU-A-BS					Dwg. No.	Notes for the models	Revision info.
501	R69 199 478	Scroll compressor	ENB62FB3-YE	1	1					EP10132B23		Chg.
502	R61 A33 480	Heat exchanger	3L L	1						KD01R776G09		
503	R61 A34 480	Heat exchanger	3L L BS		1					KD01R776G10		
504	R61 090 484	Accumulator assy		1	1					KB54B479G53		
505	R61 044 487	Oil separator assy		1	1					KJ00L830G02		
506	R61 002 540	Ball valve	VSAMH8SSCM-A	1	1					P636343X01	<BV1>	
507	R61 025 538	Valve	VSAMH8SSCM-LA1	1	1					P636353X01	<BV2>	
508	R61 008 454	Strainer	25.4D	1	1					KB48K250G01	<ST1>	
509	R63 155 454	Strainer	6.35D	1	1					W882822G01	<ST18>	
510	R61 004 413	Check joint L		2	2					P666013X01	<CJ1,CJ2>	
511	R61 013 418	Check valve	YBV-22YA7GMD-1	1	1					P633132X01	<CV2a>	
512	R61 019 418	Check valve	UCV-A1507DQ4	2	2					P633135X01	<CV3a,CV9a>	
513	R61 065 418	Check valve	YBV-22Y9GMD-2	4	4					P639183X02	<CV4a,CV5a,CV7a,CV8a>	
514	R61 071 418	Check valve	YCV11-007	1	1					P639219X01	<CV6a>	
515	R63 002 425	Capillary tube assy		1	1					KB49F229G01	<CP1>	
516	R61 008 425	Capillary tube assy		1	1					KB49H700G01	<CP2>	
517	R61 022 425	Capillary tube assy		1	1					KD49F641G01	<CP3>	
518	R61 013 403	Four way valve	STF-H0731	1	1					P633130X01	<21S4a>	
519	R61 040 243	Four way valve coil	STF-H01AQ1969UA1	1	1					P472095X01	<21S4a>	
520	R61 038 232	Valve block assy	3SV	1	1					KB00T028G03		
521	R63 6A7 235	Solenoid valve	ACS-BPMD-8	3	3					P631310X01	<SV4a,SV4b,SV4d>	
522	R63 Y07 232	Solenoid valve	ATS-B7SMD-1	1	1					P631291X01	<SV9>	
523	R63 6A7 243	Solenoid valve coil	A20-1B02B-1	4	4					P472010X01	<SV4a,SV4b,SV4d,SV9>	
524	R63 046 232	Solenoid valve	FD2A77	1	1					P631312X01	<SV1a>	
525	R61 029 243	Solenoid valve coil	FQ-D808	1	1					P472086X01	<SV1a>	
526	R63 027 232	Solenoid valve	VPV-L202D	1	1					P631296X01	<SV5b>	
527	R61 011 243	Solenoid valve coil	VPV-MOAQ540UA1	1	1					P472047X01	<SV5b>	
528	R61 107 401	Linear expansion valve	PAM-BB0YGMD-2	1	1					KR50C486H01	<LEV5a>	
529	R61 030 243	Linear expansion valve coil	PAM-MD12MD-6	1	1					P472081X01	<LEV5a>	
530	R61 056 208	Pressure switch	ACB-1UB28W	1	1					P426320X02	<63H1>	
531	R63 049 288	Pressure sensor	HP	1	1					KB00H904G20	<63HS1>	
532	R63 050 288	Pressure sensor	LP	1	1					KB00H904G21	<63LS>	
533	R61 060 200	Thermistor		3	3					P418065X01	<TH3,TH5,TH7>	
534	R63 911 202	Thermistor		1	1					P425416X02	<TH4>	
535	R63 800 202	Thermistor		1	1					P425494X01	<TH6>	
536	R63 852 860	Rubber mount		4	4					W897574H01	For compressor	
537	R61 001 310	Sensor holder		1	1					KB25B471G02		
538	R63 6A7 245	SV tightening element		1	1					W909209G01		
539	R61 088 232	SV block service parts kit		1	1					KD00U820G20	*15	
540	R61 059 418	Check valve 1	with instructions	2	2					KD00U820G21	*16 <CV4a,CV8a>	
541	R61 124 418	Check valve 2	with instructions	1	1					KD00U820G35	*16 <CV6a>	
542	R61 061 418	Check valve 3	with instructions	1	1					KD00U820G23	*16 <CV9a>	
543	R61 107 288	COMP shell kit KL		1	1					KJ00K045G02	*17	
544	R61 020 262	ACC heater kit L		1	1					KJ00K046G04	*17	
545	R61 T01 396	Sensor kit	96ZKMU	1	1					KJ00K047G21	*17	

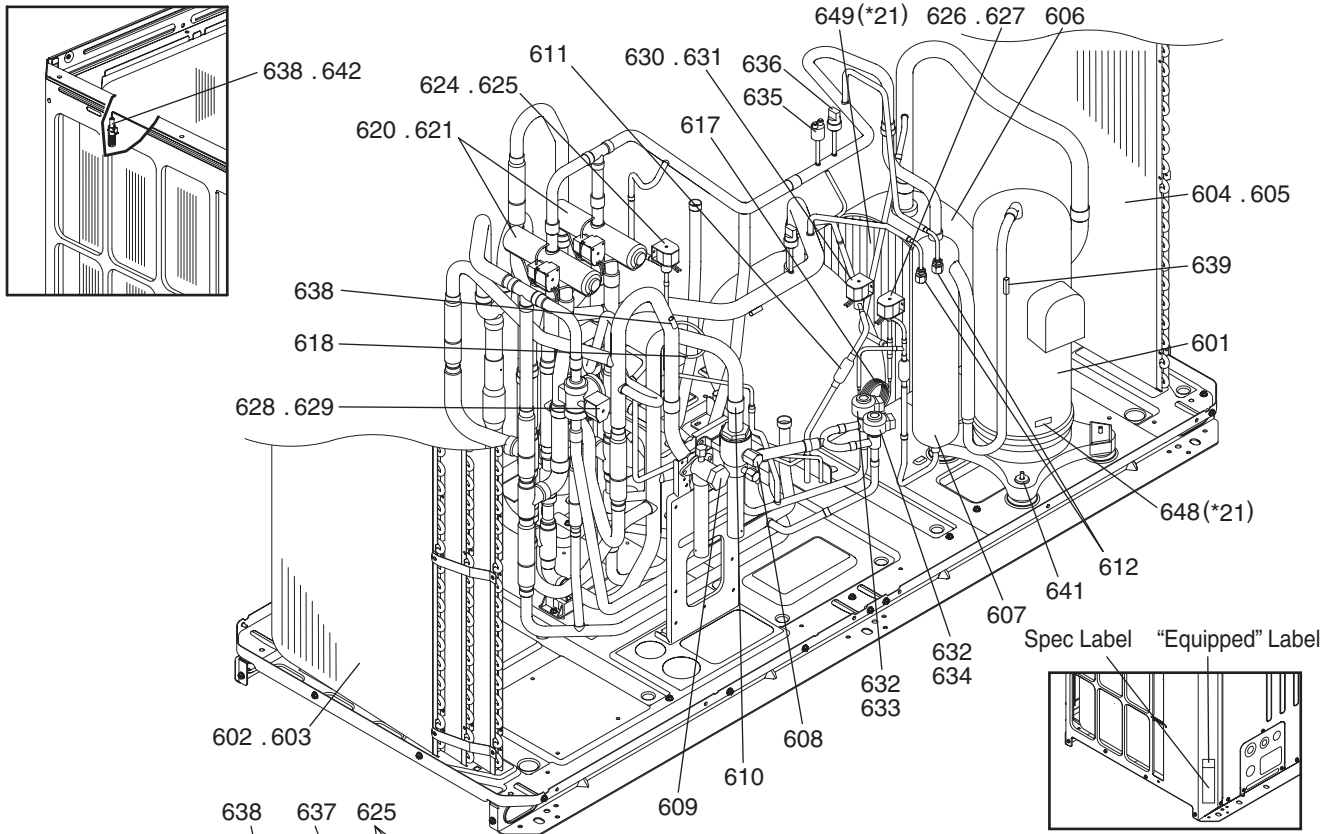
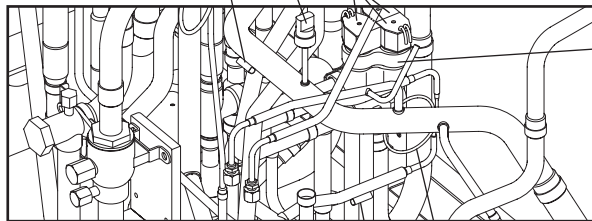


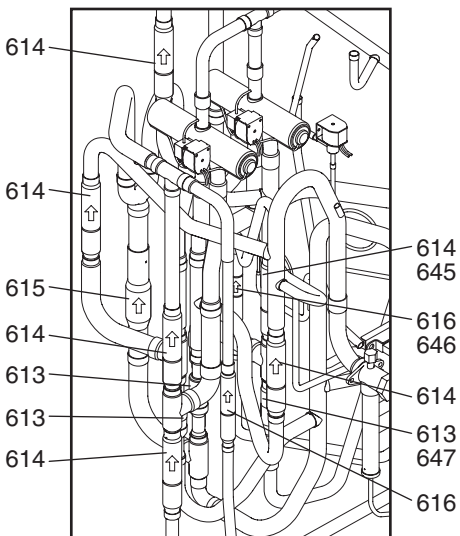
Figure 2



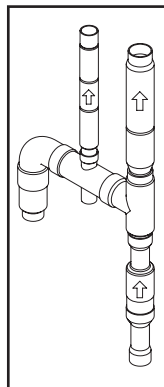
<To replace parts with the HEX removed>
 Individual replacement of parts 622 and 623 is possible.
 <To replace parts without the HEX removed>
 (*18, *19)
 Replace parts 622 and 623 with a service pipe assembly 644 (Figure 1).

<To replace parts without the HEX removed>(*18, *20)
 Remove the solenoid valve block assembly (Figure 1), take the check valve assembly (see figure left) out of the unit, and replace parts 645, 646, 647.

<To replace parts with the HEX removed>
 Individual replacement of parts 613, 614, and 616 is possible.



When the part alone is replaced (613,614,616)



When the part is replaced as an assembly (613,614,616)

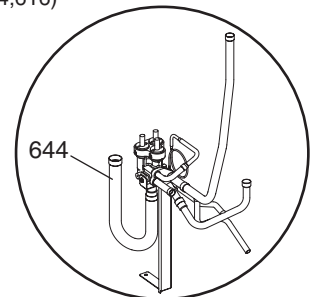
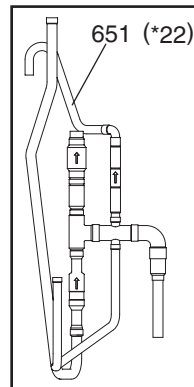


Figure 1

*18 Refer to the replacement instructions provided with parts 644, 645, 646, and 647 for details.

*19 A solenoid valve block assy and a sheet of replacement instructions are included with Solenoid valve block service parts kit (No. 644).

*20 A check valve and a sheet of replacement instructions are included with Service parts with instructions (No. 645, 646, 647).

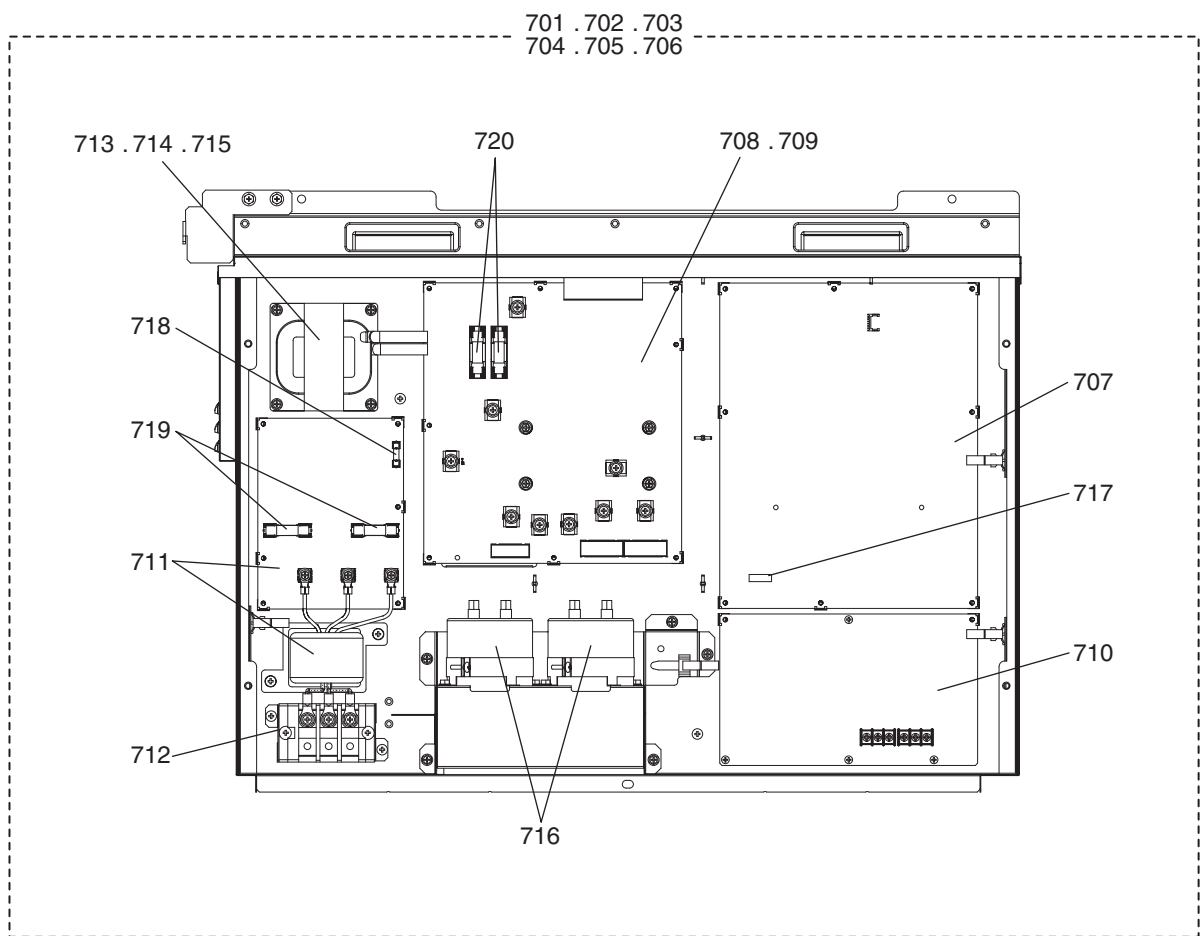
*21 If "Equipped" label as shown in Figure 2 is attached on the unit, order the Compressor shell kit part No.648 and Accumulator heater kit part No.649. If it is not attached, order the Sensor kit part No.650.

*22 For how to attach part No.651, refer to the replacement instruction in the service handbook.

Actual external appearance of some service parts may differ from the figure.

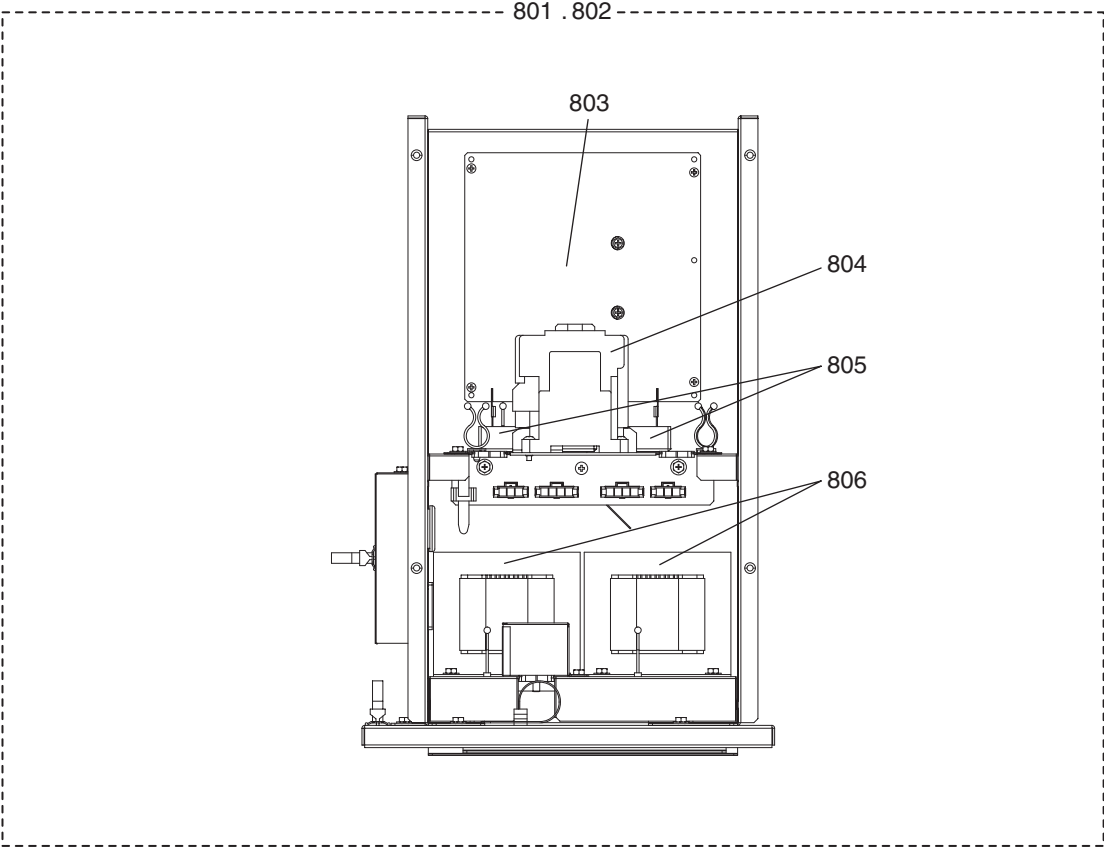
No.	Part No.	Part Name	Spec.	PURY-P120ZKMU-A	PURY-P120ZKMU-A-BS	PURY-P144ZKMU-A	PURY-P144ZKMU-A-BS	Dwg. No.	Notes for the models	Revision info.
601	R69 198 478	Scroll compressor	HNB83FC3-YE	1	1	1	1	EP10136B21		Chg.
602	R61 A27 480	Heat exchanger L	3L XL	1		1		KD01R771G03		
603	R61 A28 480	Heat exchanger L	3L XL BS		1		1	KD01R771G04		
604	R61 A29 480	Heat exchanger R	3L XL	1		1		KD01R885G03		
605	R61 A30 480	Heat exchanger R	3L XL BS		1		1	KD01R885G04		
606	R61 088 484	Accumulator assy		1	1	1	1	KB54B479G39		
607	R61 044 487	Oil separator assy		1	1	1	1	KJ00L830G02		
608	R61 009 410	Ball valve	SBV-JA10YGME-3	1	1	1	1	P636358X01	<BV1>	
609	R61 025 538	Valve	VSAMH8SSCM-LA1	1	1	1	1	P636353X01	<BV2>	
610	R61 008 454	Strainer	25.4D	1	1	1	1	KB48K250G01	<ST1>	
611	R63 A42 454	Strainer	9.52D	1	1	1	1	W882823G01	<ST18>	
612	R61 004 413	Check joint L		2	2	2	2	P666013X01	<CJ1,CJ2>	
613	R61 019 418	Check valve	UCV-A1507DQ4	3	3	3	3	P633135X01	<CV2a,CV2b,CV8a>	
614	R61 072 418	Check valve	BCV-1807DYQ2	6	6	6	6	P639218X02	<CV4a,CV4b,CV5a,CV5b,CV7a,CV7b>	
615	R61 065 418	Check valve	YBV-22YA7GMD-2	1	1	1	1	P639183X02	<CV3a>	
616	R61 071 418	Check valve	YCV11-007	2	2	2	2	P639219X01	<CV6a,CV6b>	
617	R63 R55 425	Capillary tube assy		1	1	1	1	W905191G02	<CP1>	
618	R61 008 425	Capillary tube assy		1	1	1	1	KB49H700G01	<CP2>	
619	R61 022 425	Capillary tube assy		1	1	1	1	KD49F641G01	<CP3>	
620	R61 013 403	Four way valve	STF-H0731	2	2	2	2	P633130X01	<21S4a,21S4b>	
621	R61 040 243	Four way valve coil	STF-H01AQ1969UA1	2	2	2	2	P472095X01	<21S4a,21S4b>	
622	R61 038 232	Valve block assy	3SV	1	1	1	1	KB00T028G03		
623	R63 6A7 235	Solenoid valve	ACS-BPMD-8	3	3	3	3	P631310X01	<SV4a,SV4b,SV4d>	
624	R63 Y07 232	Solenoid valve	ATS-B7SMD-1	1	1	1	1	P631291X01	<SV9>	
625	R63 6A7 243	Solenoid valve coil	A20-1B02B-1	4	4	4	4	P472010X01	<SV4a,SV4b,SV4d,SV9>	
626	R63 046 232	Solenoid valve	FD2A77	1	1	1	1	P631312X01	<SV1a>	
627	R61 029 243	Solenoid valve coil	FQ-D808	1	1	1	1	P472086X01	<SV1a>	
628	R63 P89 232	Solenoid valve	SR66PF-06WR	1	1	1	1	P631278X01	<SV4C>	
629	R61 005 243	Solenoid valve coil	SR66PF-05B-2	1	1	1	1	P472044X02	<SV4C>	
630	R63 027 232	Solenoid valve	VPV-L202D	1	1	1	1	P631296X01	<SV5b>	
631	R61 011 243	Solenoid valve coil	VPV-MOAQ540UA1	1	1	1	1	P472047X01	<SV5b>	
632	R61 107 401	Linear expansion valve	PAM-BB0YGMD-2	2	2	2	2	KR50C486H01	<LEV5a,LEV5b>	
633	R61 030 243	Linear expansion valve coil	PAM-MD12MD-6	1	1	1	1	P472081X01	<LEV5a>	
634	R61 022 243	Linear expansion valve coil	PAM-MD12MD-3	1	1	1	1	P472061X02	<LEV5b>	
635	R61 056 208	Pressure switch	ACB-1UB28W	1	1	1	1	P426320X02	<63H1>	
636	R63 052 288	Pressure sensor	HP	1	1	1	1	KB00H904G22	<63HS1>	
637	R63 053 288	Pressure sensor	LP	1	1	1	1	KB00H904G23	<63LS>	
638	R61 060 200	Thermistor		3	3	3	3	P418065X01	<TH3,TH5,TH7>	
639	R63 911 202	Thermistor		1	1	1	1	P425416X02	<TH4>	
640	R63 800 202	Thermistor		1	1	1	1	P425494X01	<TH6>	
641	R63 852 860	Rubber mount		4	4	4	4	W897574H01	For compressor	
642	R61 001 310	Sensor holder		1	1	1	1	KB25B471G02		
643	R63 6A7 245	SV tightening element		1	1	1	1	W909209G01		
644	R61 089 232	SV block service parts kit		1	1	1	1	KD00U820G24	*19	
645	R61 081 418	Check valve 1	with instructions	1	1	1	1	KD00U820G30	*20 <CV4a>	

No.	Part No.	Part Name	Spec.					Dwg. No.	Notes for the models	Revision info.
				PURY-P120ZKMU-A	PURY-P120ZKMU-A-BS	PURY-P144ZKMU-A	PURY-P144ZKMU-A-BS			
646	R61 125 418	Check valve 2	with instructions	1	1	1	1	KD00U820G36	*20 <CV6a>	
647	R61 064 418	Check valve 3	with instructions	1	1	1	1	KD00U820G27	*20 <CV8a>	
648	R61 107 288	COMP shell kit KL		1	1	1	1	KJ00K045G02	*21	
649	R61 020 262	ACC heater kit L		1	1	1	1	KJ00K046G04	*21	
650	R61 T01 397	Sensor kit	120ZKMU	1	1	1	1	KJ00K047G22	*21	
651	R61 128 418	Check valve assy		1	1	1	1	KL00R330G01	*22	

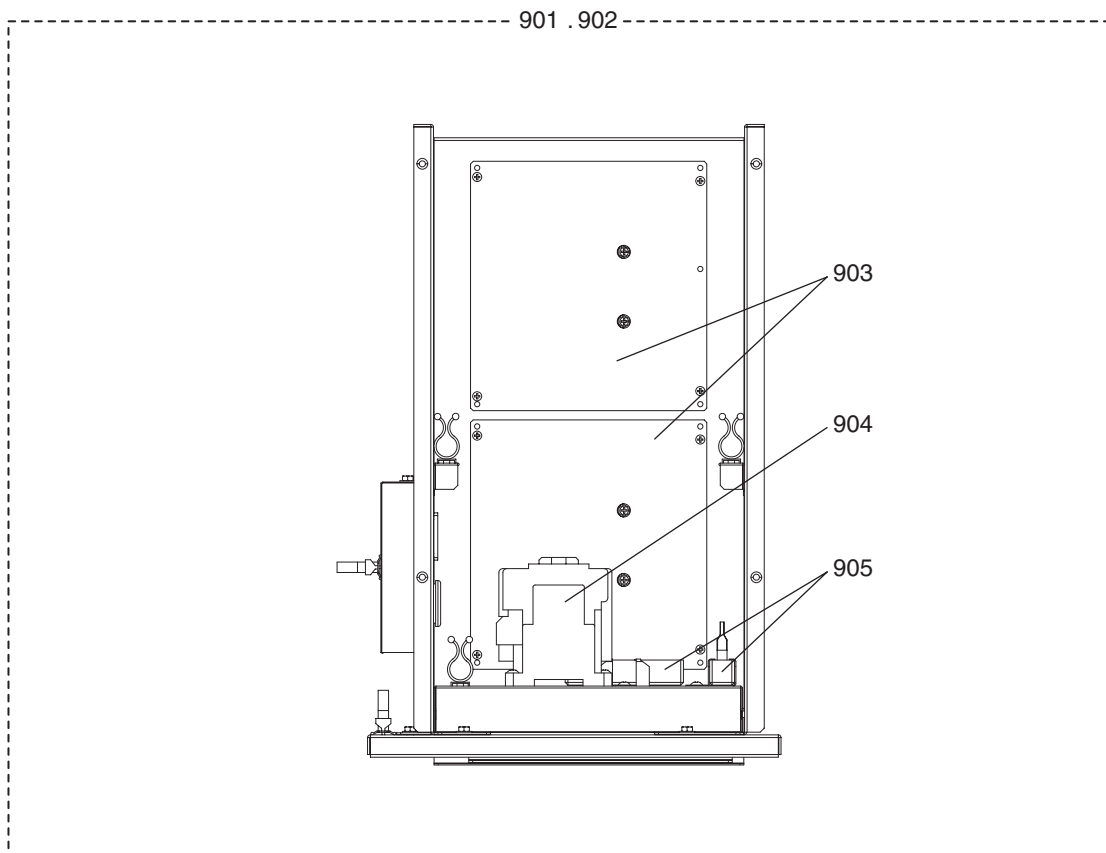


No.	Part No.	Part Name	Spec.							Dwg. No.	Notes for the models	Revision info.
				PURY-P72ZKMU-A	PURY-P72ZKMU-A-BS	PURY-P96ZKMU-A	PURY-P96ZKMU-A-BS	PURY-P120ZKMU-A	PURY-P120ZKMU-A-BS			
701	R61 964 305	Control box	R-P72ZK	1							KE80G163G13	
702	R61 965 305	Control box	R-P72ZK BS		1						KE80G163G14	
703	R61 966 305	Control box	R-P96ZK			1					KE80G163G15	
704	R61 967 305	Control box	R-P96ZK BS				1				KE80G163G16	
705	R61 968 305	Control box	R-P144ZK					1			KE80G163G17	
706	R61 969 305	Control box	R-P144ZK BS						1		KE80G163G18	
707	R61 553 280	Control board		1	1	1	1	1	1		KE80C836G29	<MAIN09>
708	R61 394 280	INV board						1	1		KE80G179G01	<INV34Y>
709	R61 399 280	INV board		1	1	1	1				KE80G179G02	<INV34Y>
710	R61 397 280	M-NET board		1	1	1	1	1	1		KE80C055G08	<PS-MNET-Y>
711	R61 037 293	Noise filter	board,coil	1	1	1	1	1	1		KE80G182G01	
712	R61 N18 246	Terminal block		1	1	1	1	1	1		S436005H01	<TB1>
713	R61 052 259	Reactor		1	1						KR65C350H02	<DCL>
714	R61 053 259	Reactor				1	1				KR65C351H02	<DCL>
715	R61 054 259	Reactor						1	1		KR65C352H02	<DCL>
716	R61 012 252	Capacitor assy		1	1	1	1	1	1		KE00G151G01	<C1,C2>
717	R61 005 239	Fuse	3.15A AC250V T	1	1	1	1	1	1		S423001H39	
718	R61 006 239	Fuse	6.3A AC250V T	1	1	1	1	1	1		S423001H42	
719	R61 009 239	Fuse	6A AC600V F	2	2	2	2	2	2		S423005H08	
720	R61 020 239	Fuse	8A DC1000V F	2	2	2	2	2	2		YE81L818H08	

No.	Part No.	Part Name	Spec.	PURY-P144ZKMU-A	PURY-P14260MU-A-BS					Dwg. No.	Notes for the models	Revision info.
701	R61 964 305	Control box	R-P72ZK							KE80G163G13		
702	R61 965 305	Control box	R-P72ZK BS							KE80G163G14		
703	R61 966 305	Control box	R-P96ZK							KE80G163G15		
704	R61 967 305	Control box	R-P96ZK BS							KE80G163G16		
705	R61 968 305	Control box	R-P144ZK	1						KE80G163G17		
706	R61 969 305	Control box	R-P144ZK BS		1					KE80G163G18		
707	R61 553 280	Control board		1	1					KE80C836G29	<MAIN09>	
708	R61 394 280	INV board		1	1					KE80G179G01	<INV34Y>	
709	R61 399 280	INV board								KE80G179G02	<INV34Y>	
710	R61 397 280	M-NET board		1	1					KE80C055G08	<PS-MNET-Y>	
711	R61 037 293	Noise filter	board,coil	1	1					KE80G182G01		
712	R61 N18 246	Terminal block		1	1					S436005H01	<TB1>	
713	R61 052 259	Reactor								KR65C350H02	<DCL>	
714	R61 053 259	Reactor								KR65C351H02	<DCL>	
715	R61 054 259	Reactor		1	1					KR65C352H02	<DCL>	
716	R61 012 252	Capacitor assy		1	1					KE00G151G01	<C1,C2>	
717	R61 005 239	Fuse	3.15A AC250V T	1	1					S423001H39		
718	R61 006 239	Fuse	6.3A AC250V T	1	1					S423001H42		
719	R61 009 239	Fuse	6A AC600V F	2	2					S423005H08		
720	R61 020 239	Fuse	8A DC1000V F	2	2					YE81L818H08		



No.	Part No.	Part Name	Spec.	PURY-P72ZKMU-A	PURY-P72ZKMU-A-BS	PURY-P96ZKMU-A	PURY-P96ZKMU-A-BS		Dwg. No.	Notes for the models	Revision info.
801	R61 738 305	Sub box	P72ZK	1		1			KE80G175G01		
802	R61 739 305	Sub box	P72ZK BS		1	1			KE80G175G02		
803	R61 400 280	Fan INV board		1	1	1	1		KE80G181G01	<INV/S13Y>	
804	R61 Y41 225	Magnetic contactor		1	1	1	1		S427020H29	<52C>	
805	R61 001 234	Resistor		2	2	2	2		P411151X01	<R1,R5>	
806	R61 045 260	Transformer		2	2	2	2		P715511X02	<T02,T03>	



No.	Part No.	Part Name	Spec.					Dwg. No.	Notes for the models	Revision info.
				PURY-P120ZKMU-A	PURY-P120ZKMU-A-BS	PURY-P144ZKMU-A	PURY-P144ZKMU-A-BS			
901	R61 741 305	Sub box	P144ZK	1		1		KE80G175G03		
902	R61 742 305	Sub box	P144ZK BS		1		1	KE80G175G04		
903	R61 400 280	Fan INV board		2	2	2	2	KE80G181G01	<INV/S13Y>	
904	R61 Y41 225	Magnetic contactor		1	1	1	1	S427020H29	<52C>	
905	R61 001 234	Resistor		2	2	2	2	P411151X01	<R1,R5>	

mitsubishi
electric
corporation

BWE01525C (20191130)