

# PARTS CATALOG R410A

**[Model Name]**

PUZ-HA24NHA1

PUZ-HA30NKA1

PUZ-HA36NKA1

PUZ-HA42NKA2

**[Service Ref.]**

**PUZ-HA24NHA1-R1**

**PUZ-HA30NKA1**

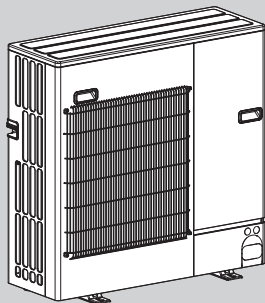
**PUZ-HA36NKA1**

**PUZ-HA42NKA2**

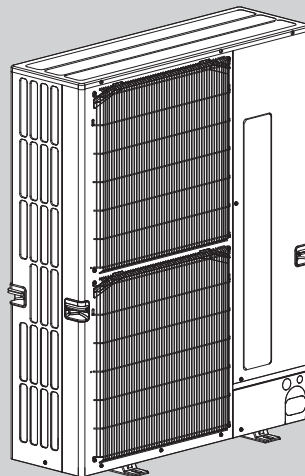
Revision:

• Some contents have been added in REVISED EDITION-A.

OCB821 is void.



**PUZ-HA24NHA1-R1**



**PUZ-HA30NKA1  
PUZ-HA36NKA1  
PUZ-HA42NKA2**

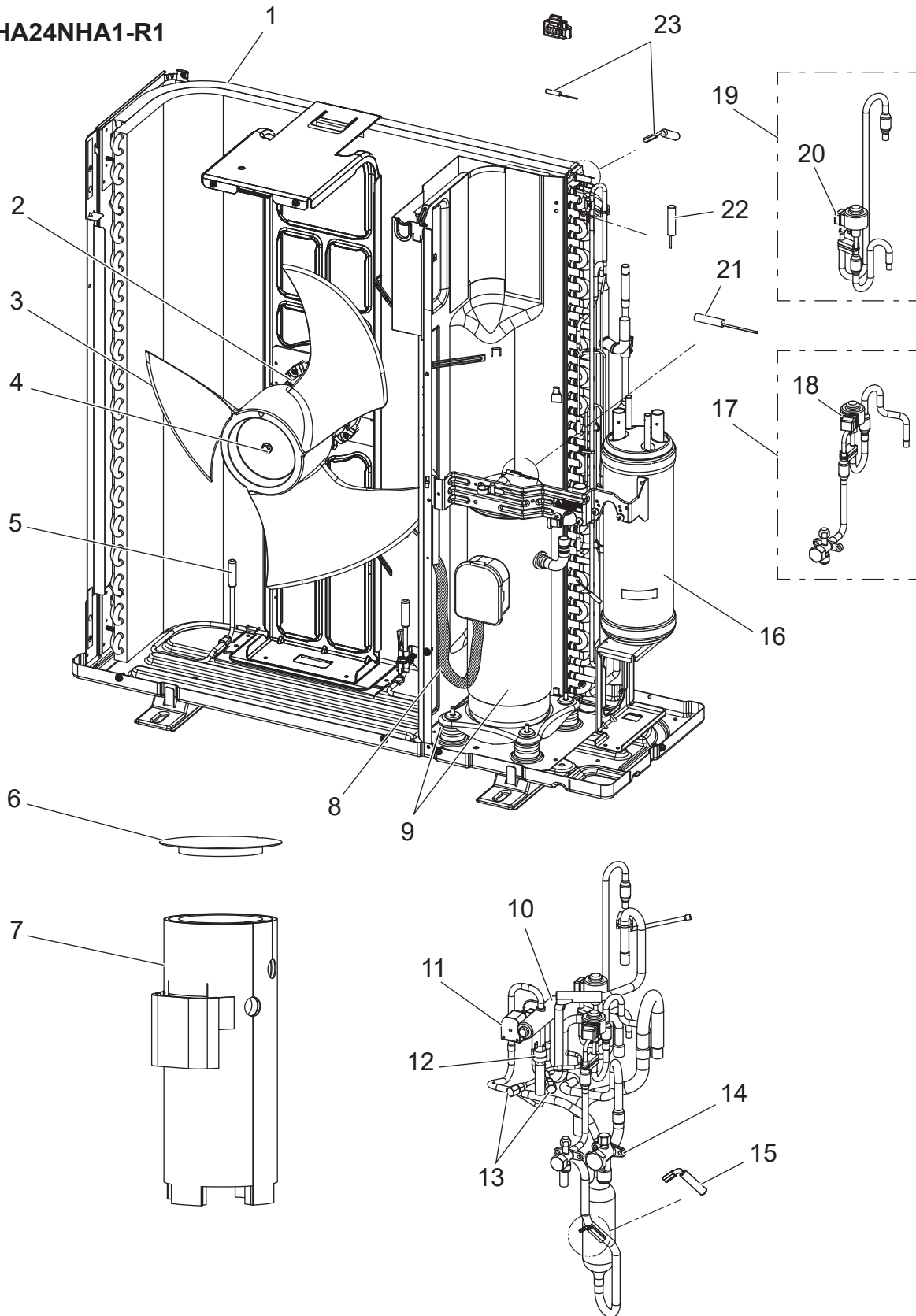
## CONTENTS

1. SERVICE PARTS LIST .....	2
-----------------------------	---

**SERVICE MANUAL (OCH821)**

**FUNCTIONAL PARTS**

**PUZ-HA24NHA1-R1**

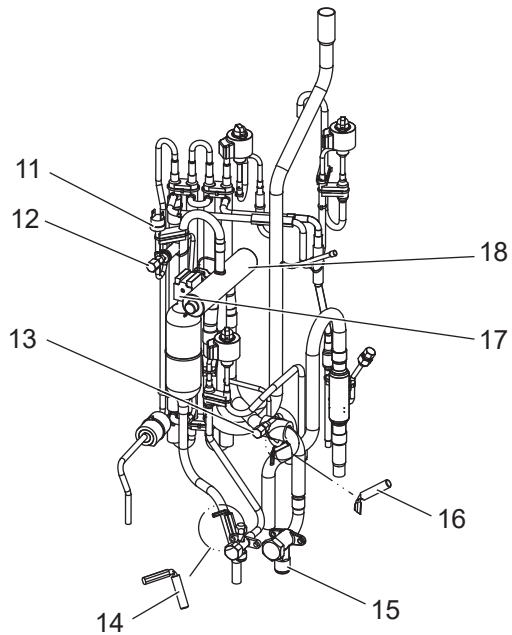
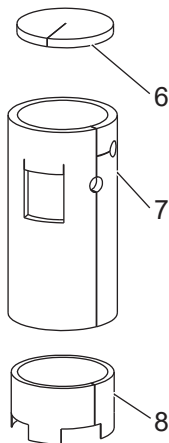
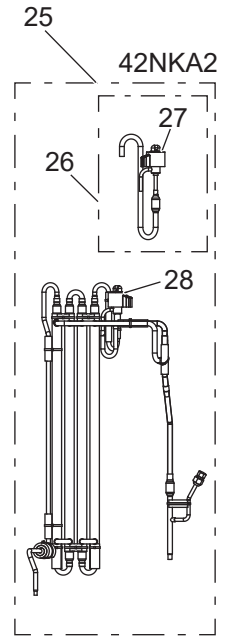
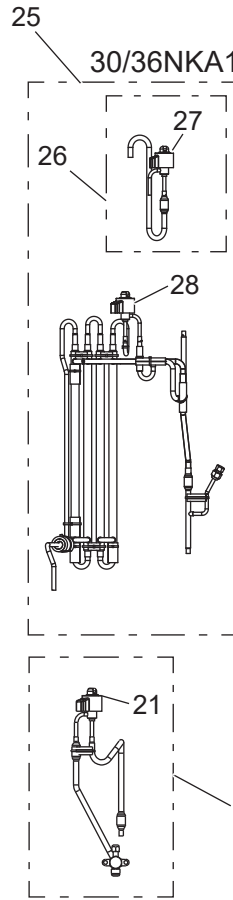
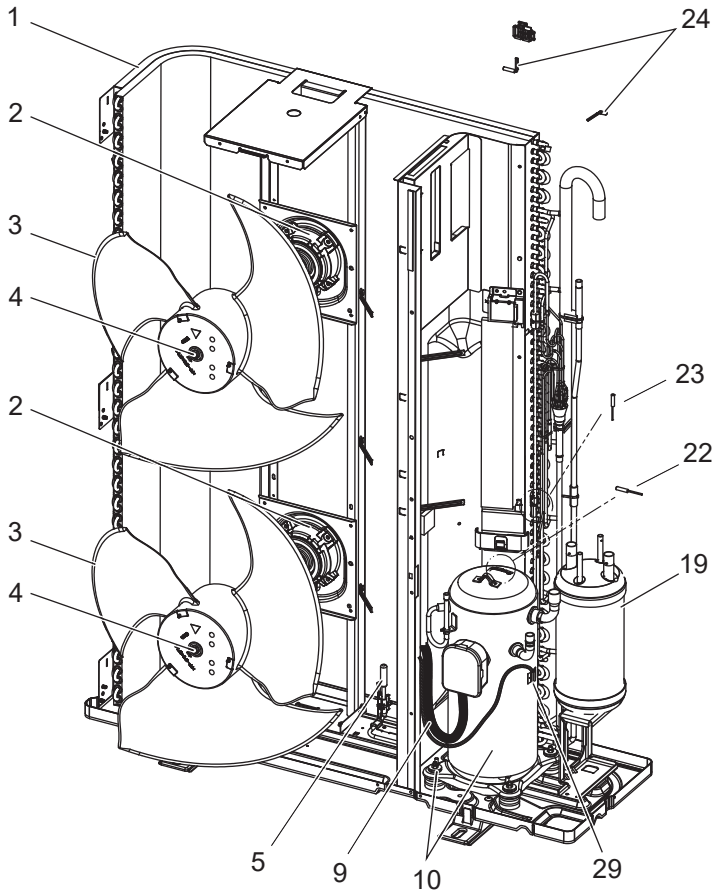


1. The part quantity below indicates the required number of pieces per unit.
2. The circled No. indicates that the part is not shown in the figure.

No.	Part No.	Part Name	PUZ-HA24NHA1-R1	Wiring Diagram Symbol	Remarks
1	T 7 W E 8 4 4 0 8	HEAT EXCHANGER	1		
2	T 7 W A 1 7 2 2 1	FAN MOTOR	1	MF1	
3	R 0 1 E 0 6 1 1 5	PROPELLER FAN	1		
4	R 0 1 E 1 6 0 9 7	CAP NUT (MEC) M6	1		
5	T 7 W B 0 4 3 0 0	BASE HEATER	1	BH, THP	
6	R 0 1 T 0 4 6 0 2	COMP FELT-DVB/TOP	1		
7	T 7 W B 0 2 6 0 2	COMP FELT-DNB/BODY	1		
8	T 7 W C 1 9 5 1 0	LEAD ASSY COMP	1		
9	T 9 7 4 2 1 4 2 7	COMPRESSOR	1	MC	DNB28FBAMT Includes RUBBER MOUNT
10	T 7 W E 0 7 4 0 3	4WAY VALVE	1	21S4	
11	T 7 W H 9 9 2 4 2	SOLENOID COIL (21S4)	1	21S4	Includes SCREW
12	T 7 W E 1 5 2 0 8	H.P SWITCH UL4.14MPA	1	63H	
13	R 0 1 E 1 2 4 1 3	CHARGE PLUG/LB90	2		
14	T 7 W E 0 9 4 1 0	STOP VALVE 5/8F	1	5/8	Includes STRAINER
15	R 0 1 E 3 5 2 0 1	THERMISTOR (DIS)	1	TH4	
16	R 0 1 E 6 5 4 4 0	POWER RECEIVER	1		
17	T 7 W B 0 5 4 0 1	LEV ASSY-B/REC-V	1	LEV-B	
18	R 0 1 H 3 2 2 4 2	COIL(LEV)/XAP-5P RED	1	LEV-B	
19	T 7 W A 0 5 4 0 1	LEV ASSY-A/C-REC	1	LEV-A	
20	R 0 1 H 1 8 2 4 2	COIL(LEV)/XAP-5P WH	1	LEV-A	
21	R 0 1 E 3 9 2 0 1	THERMISTOR (SHELL)	1	TH33	
22	R 0 1 H 8 7 2 0 2	THERMISTOR	1	TH3	
23	R 0 1 M 1 8 2 0 2	THERMISTOR W	1	TH6/7	

# FUNCTIONAL PARTS

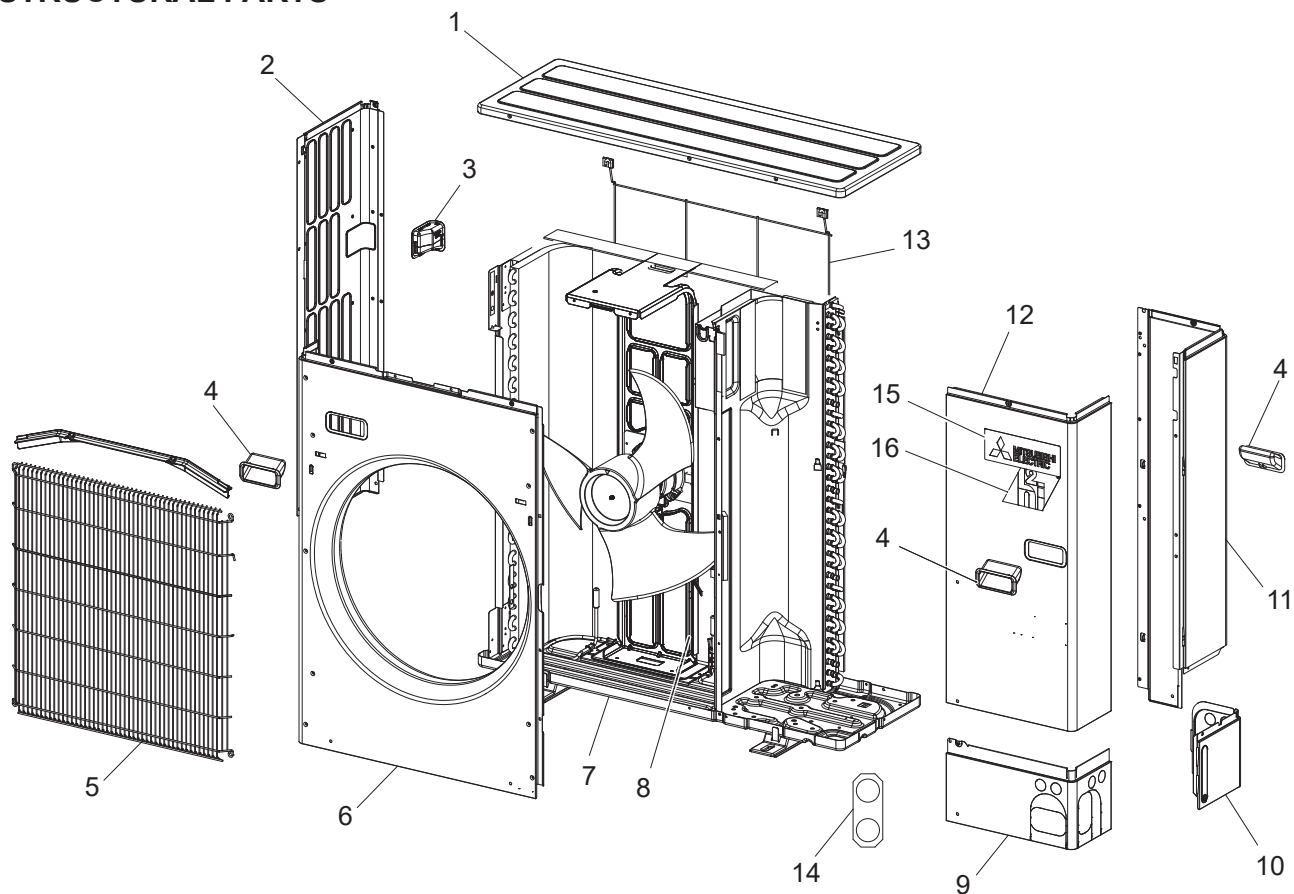
PUZ-HA30NKA1  
PUZ-HA36NKA1  
PUZ-HA42NKA2



1. The part quantity below indicates the required number of pieces per unit.
2. The circled No. indicates that the part is not shown in the figure.

No.	Part No.	Part Name	PUZ-HA30NKA1	PUZ-HA36NKA1	PUZ-HA42NKA2	Wiring Diagram Symbol	Remarks
1	R 0 1 H 5 7 4 0 8	HEAT EXCHANGER	1	1			
1	T 7 W F 0 9 4 0 8	HEAT EXCHANGER			1		
2	T 7 W A 1 0 2 2 1	FAN MOTOR	2	2	2	MF1, 2	
3	R 0 1 E 1 6 1 1 5	PROPELLER FAN/D550	2	2	2		
4	R 0 1 E 1 6 0 9 7	CAP NUT (MEC) M6	2	2	2		
5	T 7 W B 0 5 3 0 0	BASE HEATER	1	1	1	BH, THP	
6	R 0 1 A 5 7 6 0 2	COMP FELT (TOP)	1	1	1		
7	T 7 W B 1 8 6 0 2	COMP FELT-B/ANB33FHD	1	1	1		
8	R 0 1 U 0 0 6 0 2	COMP FELT-U/ANB	1	1	1		
9	T 7 W C 1 8 5 1 0	LEAD ASSY COMP	1	1			
9	T 7 W C 0 5 5 1 0	LEAD ASSY COMP			1		
10	T 9 7 4 A 0 0 2 3	COMPRESSOR	1	1		MC	ANB33FHGMT Includes RUBBER MOUNT
10	T 9 7 4 A 0 0 2 4	COMPRESSOR			1	MC	ANB42FHFMT Includes RUBBER MOUNT
11	T 7 W E 1 5 2 0 8	H.P SWITCH UL4.14MPA	1	1	1	63H	
12	R 0 1 E 2 8 4 1 3	CHARGE PLUG/ST	1	1	1		
13	R 0 1 E 3 2 4 1 3	CHARGE PLUG/LB90	1	1	1		
14	R 0 1 E 3 5 2 0 1	THERMISTOR (DIS)	1	1	1	TH4	
15	T 7 W E 0 9 4 1 0	STOP VALVE 5/8F	1	1	1		Includes STRAINER
16	R 0 1 M 2 8 2 0 2	THERMISTOR	1	1	1	TH32	
17	T 7 W E 6 9 2 4 2	SOLENOID COIL (21S4)	1	1	1	21S4	Includes SCREW
18	R 0 1 E 4 0 4 0 3	4WAY VALVE	1	1	1	21S4	
19	R 0 1 E 6 0 4 4 0	POWER RECEIVER	1	1	1		
20	T 7 W B 1 1 4 0 1	LEV ASSY-B/REC-V	1	1		LEV-B	
20	T 7 W B 1 2 4 0 1	LEV ASSY-B/REC-V			1	LEV-B	
21	R 0 1 H R 3 2 4 2	COIL(LEV)/XAP-5P RED	1	1	1	LEV-B	
22	R 0 1 E 3 9 2 0 1	THERMISTOR (SHELL)	1	1	1	TH33	
23	R 0 1 E 6 7 2 0 2	THERMISTOR	1	1	1	TH3	
24	R 0 1 E 9 4 2 0 2	THERMISTOR W	1	1	1	TH6/7	
25	T 7 W C 0 4 4 0 1	HIC&LEV ASSY	1	1		LEV-A/C	
25	T 7 W C 0 5 4 0 1	HIC&LEV ASSY			1	LEV-A/C	
26	T 7 W A 1 1 4 0 1	LEV ASSY-A/C-HIC	1	1		LEV-A	
26	T 7 W A 1 2 4 0 1	LEV ASSY-A/C-HIC			1	LEV-A	
27	R 0 1 H R 6 2 4 2	COIL(LEV)/XAP-5P WH	1	1	1	LEV-A	
28	R 0 1 H R 4 2 4 2	COIL(LEV)/XAP-5P BLU	1	1	1	LEV-C	
29	T 7 W E 3 2 2 0 1	TRS ASSY	1	1		TRS	
29	T 7 W E 3 5 2 0 1	TRS ASSY			1	TRS	

## STRUCTURAL PARTS

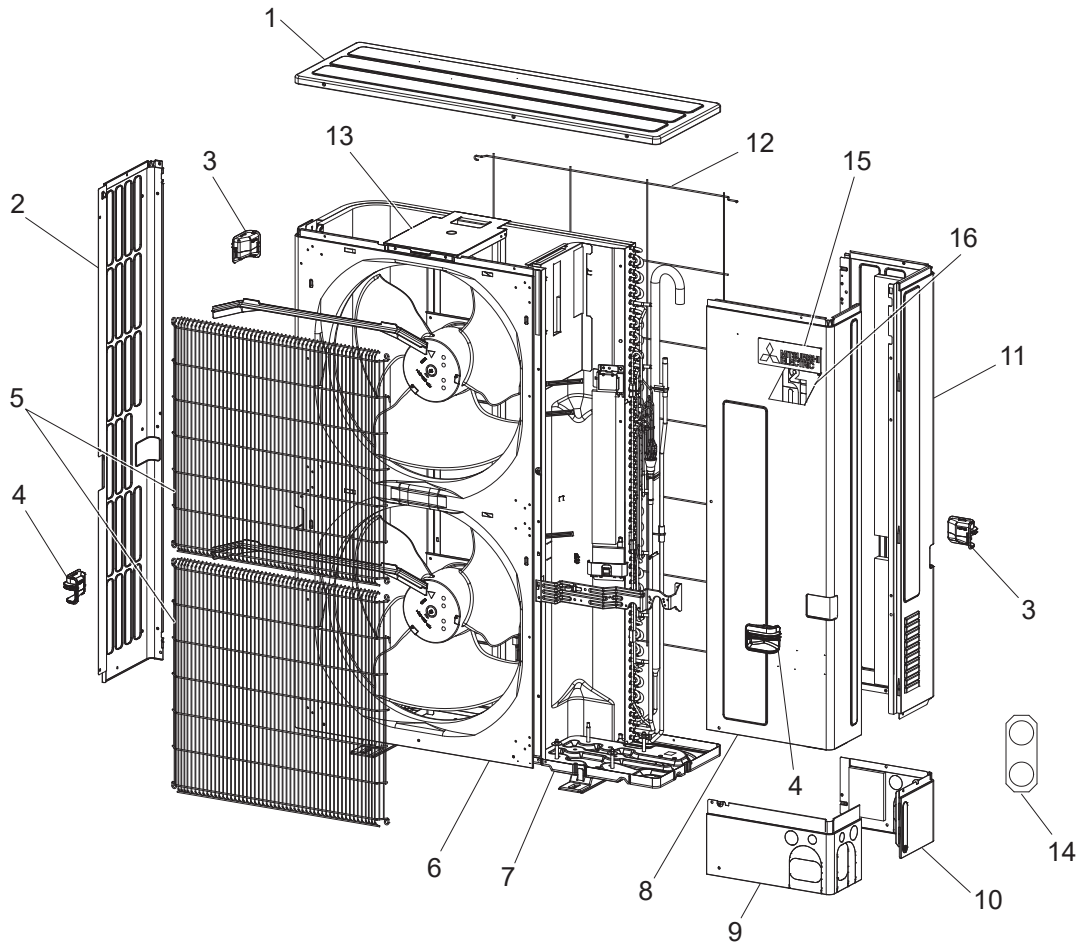


1. The part quantity below indicates the required number of pieces per unit.

2. The circled No. indicates that the part is not shown in the figure.

No.	Part No.	Part Name	PUZ-HA24NHA1-R1	Wiring Diagram Symbol	Remarks
1	T 7 W E 1 6 6 4 1	TOP PANEL	1		
2	T 7 W E 1 2 6 6 2	SIDE PANEL (L)	1		
3	R 0 1 E 0 6 6 5 5	HANDLE (REAR)	1		
4	R 0 1 E 0 1 6 5 5	HANDLE	3		
5	R 0 1 E 7 4 6 9 1	WIRE GRILLE	1		
6	R 0 1 E 2 2 6 6 8	FRONT PANEL	1		
7	T 7 W E 2 8 6 8 6	BASE ASSY	1		
8	T 7 W E 2 1 1 3 0	MOTOR SUPPORT	1		
9	R 0 1 E 4 0 6 5 8	COVER PANEL (FRONT)	1		
10	R 0 1 E 2 4 6 5 8	COVER PANEL (REAR)	1		
11	T 7 W E 4 1 6 6 1	SIDE PANEL (R)	1		
12	T 7 W E 1 0 6 6 7	SERVICE PANEL	1		
13	T 7 W E 0 7 6 9 8	REAR GUARD	1		
14	T 7 W E 0 1 6 1 7	CONDUIT PLATE	1		
15	R 0 1 A 1 3 0 0 5	BRAND LABEL	1		
16	T 7 W A 1 0 0 0 5	LABEL (H2I)	1		

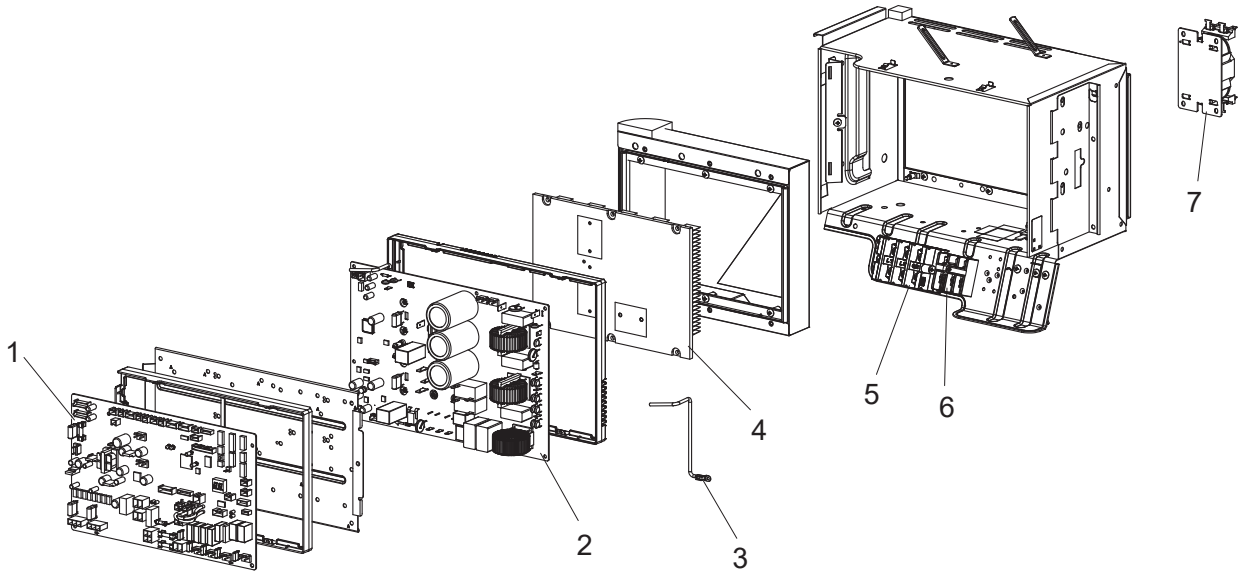
# STRUCTURAL PARTS



1. The part quantity below indicates the required number of pieces per unit.
2. The circled No. indicates that the part is not shown in the figure.

No.	Part No.	Part Name	PUZ-HA30NKA1	PUZ-HA36NKA1	PUZ-HA42NKA2	Wiring Diagram Symbol	Remarks
1	R 0 1 E 3 6 6 4 1	TOP PANEL	1	1	1		
2	R 0 1 E 3 0 6 6 2	SIDE PANEL (L)	1	1	1		
3	R 0 1 E 0 6 6 5 5	HANDLE (REAR)	2	2	2		
4	R 0 1 E 0 5 6 5 5	HANDLE (FRONT)	2	2	2		
5	R 0 1 E 7 3 6 9 1	WIRE GRILLE	2	2	2		
6	R 0 1 E 2 3 6 6 8	FRONT PANEL	1	1	1		
7	T 7 W E 3 5 6 8 6	BASE ASSY	1	1	1		
8	T 7 W E 1 9 6 6 8	SERVICE PANEL	1	1	1		
9	R 0 1 E 3 5 6 5 8	COVER PANEL (FRONT)	1	1	1		
10	R 0 1 E 3 6 6 5 8	COVER PANEL (REAR)	1	1	1		
11	T 7 W E 3 0 6 6 1	SIDE PANEL (R)	1	1	1		
12	R 0 1 E 1 0 6 9 8	REAR GUARD	1	1	1		
13	R 0 1 E 5 9 1 3 0	MOTOR SUPPORT	1	1			
13	R 0 1 E 6 0 1 3 0	MOTOR SUPPORT			1		
14	T 7 W E 0 4 6 1 7	CONDUIT PLATE	1	1	1		
15	R 0 1 A 1 3 0 0 5	BRAND LABEL	1	1	1		
16	T 7 W A 1 0 0 0 5	LABEL (H2I)	1	1	1		

## ELECTRICAL PARTS

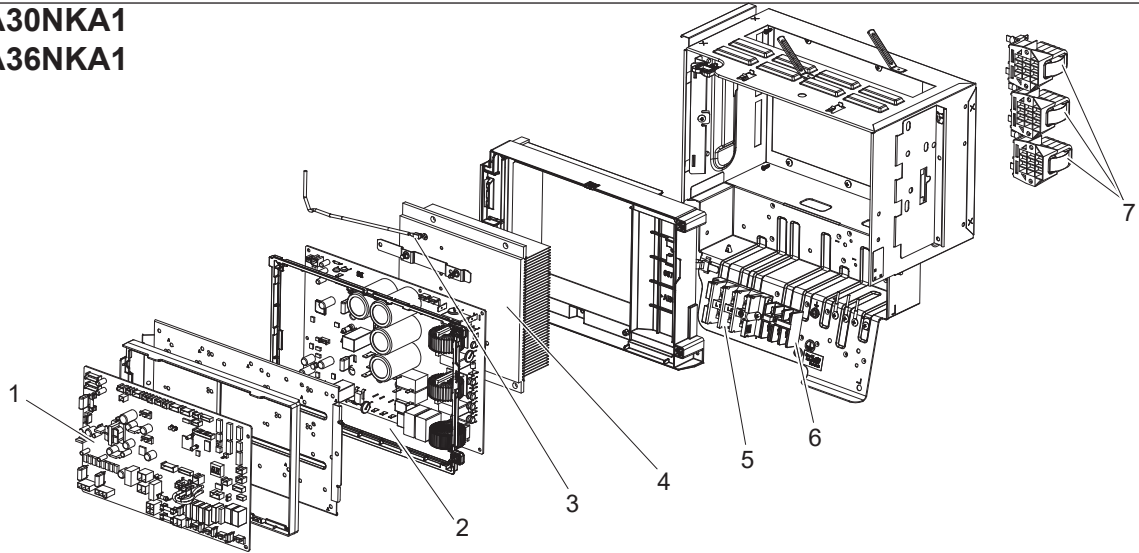


1. The part quantity below indicates the required number of pieces per unit.
2. The circled No. indicates that the part is not shown in the figure.

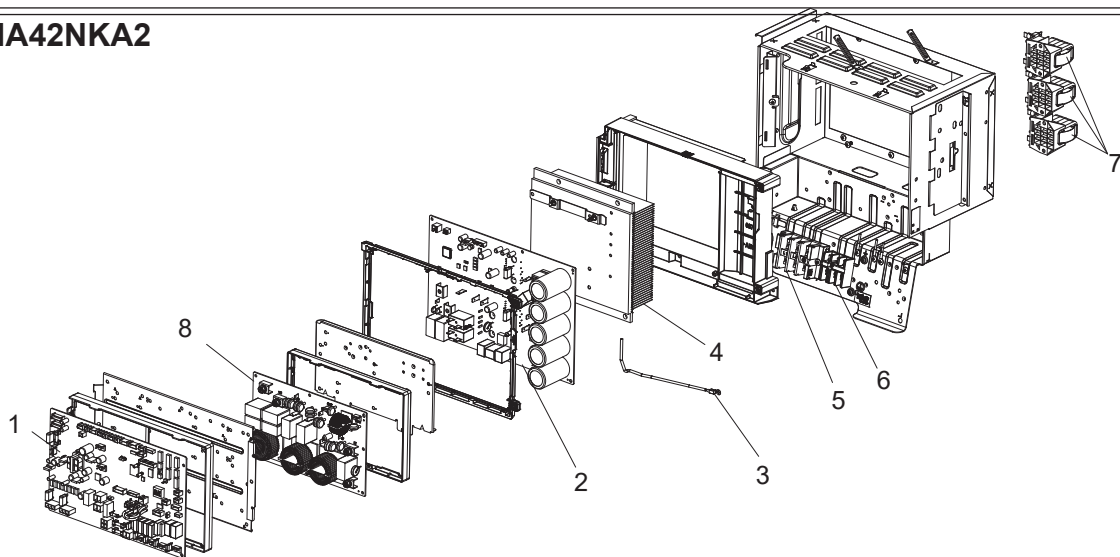
No.	Part No.	Part Name	PUZ-HA24NHA1-R1	Wiring Diagram Symbol	Remarks
1	T 7 W S 9 6 3 1 5	CONTROLLER BOARD	1	C.B.	
2	T 7 W S 2 7 3 2 3	POWER BOARD	1	P.B.	
3	R 0 1 M 1 3 2 0 2	THERMISTOR (HS)	1	TH8	
4	T 7 W A 0 4 3 7 1	HEAT SINK	1		Includes SCREWS
5	T 7 W P 0 5 2 4 6	T.B./L1.L2.E	1	TB1 (L1/L2/E)	
6	T 7 W S 0 3 2 4 6	T.B./S1.S2.S3	1	TB2 (S1/S2/S3)	
7	T 7 W E 2 7 2 5 9	REACTOR	1	DCL	

# ELECTRICAL PARTS

**PUZ-HA30NKA1**  
**PUZ-HA36NKA1**



**PUZ-HA42NKA2**

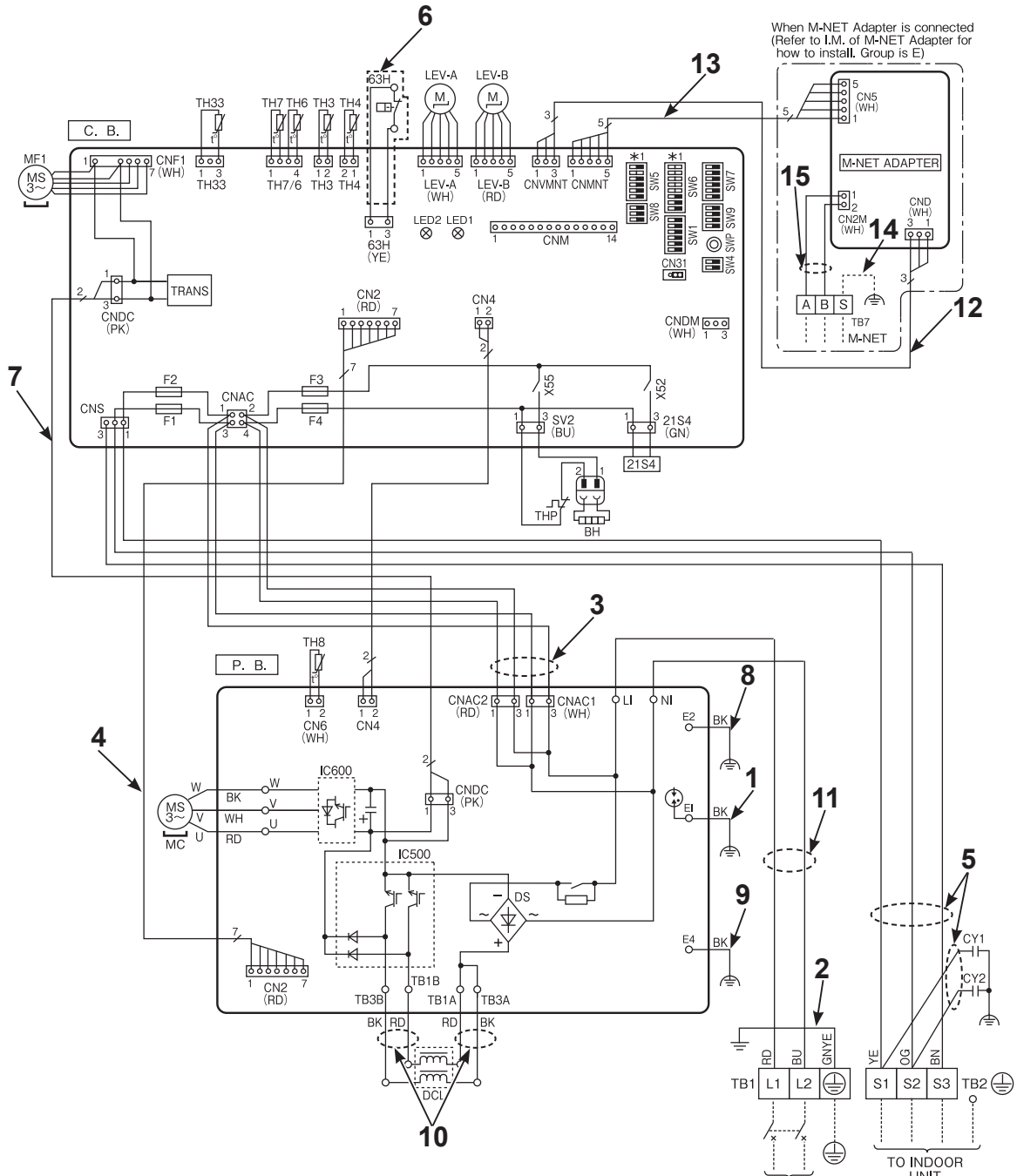


1. The part quantity below indicates the required number of pieces per unit.
2. The circled No. indicates that the part is not shown in the figure.

No.	Part No.	Part Name	PUZ-HA30NKA1	PUZ-HA36NKA1	PUZ-HA42NKA2	Wiring Diagram Symbol	Remarks
1	T 7 W S 9 1 3 1 5	CONTROLLER BOARD	1	1	1	C.B.	
2	T 7 W S 2 3 3 2 3	POWER BOARD	1	1		P.B.	
2	T 7 W S 2 4 3 2 3	POWER BOARD			1	P.B.	
3	R 0 1 M 1 3 2 0 2	THERMISTOR (HS)	1	1		TH8	
3	R 0 1 M 1 6 2 0 2	THERMISTOR (HS)			1	TH8	
4	R 0 1 A 2 2 3 7 1	HEAT SINK	1	1			Includes SCREWS
4	R 0 1 A 2 3 3 7 1	HEAT SINK			1		Includes SCREWS
5	T 7 W P 0 5 2 4 6	T.B./L1.L2.E	1	1	1	TB1 (L1/L2/E)	
6	T 7 W S 0 3 2 4 6	T.B./S1.S2.S3	1	1	1	TB2 (S1/S2/S3)	
7	R 0 1 E 5 6 2 5 9	REACTOR	3	3	3	DCL	
8	T 7 W E 5 0 3 4 6	NOISE FILTER			1	N.F	

# LEAD WIRE ASSEMBLY

## PUZ-HA24NHA1-R1

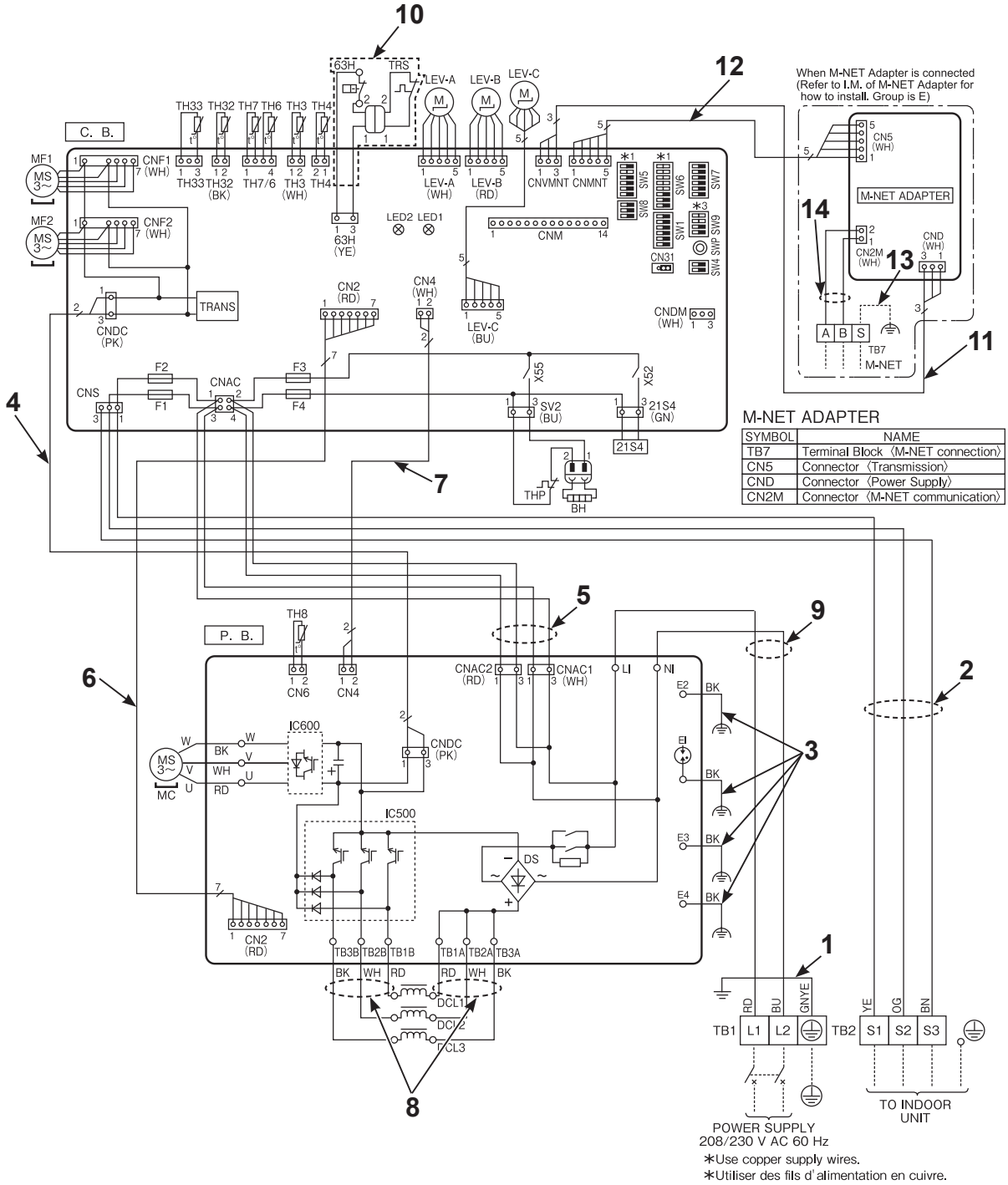


POWER SUPPLY  
208/230 V AC 60 Hz  
\*Use copper supply wires.  
\*Utiliser des fils d'alimentation en cuivre.

1. The part quantity below indicates the required number of pieces per unit.
2. The circled No. indicates that the part is not shown in the figure.

No.	Part No.	Part Name	PUZ-HA24NHA1-R1	Wiring Diagram Symbol	Remarks
1	T7W A80 304	LEAD WIRE ASSEMBLY	1		
2	T7W A93 304	LEAD WIRE ASSEMBLY	1		
3	T7W A94 304	LEAD WIRE ASSEMBLY	1		
4	T7W A95 304	LEAD WIRE ASSEMBLY	1		
5	T7W A96 304	LEAD WIRE ASSEMBLY	1		
6	T7W A97 304	LEAD WIRE ASSEMBLY	1		
7	T7W A98 304	LEAD WIRE ASSEMBLY	1		
8	T7W A99 304	LEAD WIRE ASSEMBLY	1		
9	T7W B00 304	LEAD WIRE ASSEMBLY	1		
10	T7W B01 304	LEAD WIRE ASSEMBLY	1		
11	T7W B02 304	LEAD WIRE ASSEMBLY	1		
12	T7W A13 304	LEAD WIRE ASSEMBLY	1		
13	T7W A14 304	LEAD WIRE ASSEMBLY	1		
14	T7W A15 304	LEAD WIRE ASSEMBLY	1		
15	T7W A16 304	LEAD WIRE ASSEMBLY	1		

# LEAD WIRE ASSEMBLY PUZ-HA30NKA1 PUZ-HA36NKA1



1. The part quantity below indicates the required number of pieces per unit.
2. The circled No. indicates that the part is not shown in the figure.

No.	Part No.	Part Name	PUZ-HA30NKA1	PUZ-HA36NKA1	Wiring Diagram Symbol	Remarks
1	T7W B03 304	LEAD WIRE ASSEMBLY	1	1		
2	T7W B04 304	LEAD WIRE ASSEMBLY	1	1		
3	T7W B05 304	LEAD WIRE ASSEMBLY	1	1		
4	T7W B06 304	LEAD WIRE ASSEMBLY	1	1		
5	T7W B07 304	LEAD WIRE ASSEMBLY	1	1		
6	T7W B08 304	LEAD WIRE ASSEMBLY	1	1		
7	T7W B09 304	LEAD WIRE ASSEMBLY	1	1		
8	T7W B10 304	LEAD WIRE ASSEMBLY	1	1		
9	T7W B11 304	LEAD WIRE ASSEMBLY	1	1		
10	T7W B12 304	LEAD WIRE ASSEMBLY	1	1		
11	T7W A13 304	LEAD WIRE ASSEMBLY	1	1		
12	T7W A14 304	LEAD WIRE ASSEMBLY	1	1		
13	T7W A15 304	LEAD WIRE ASSEMBLY	1	1		
14	T7W A16 304	LEAD WIRE ASSEMBLY	1	1		



1. The part quantity below indicates the required number of pieces per unit.
2. The circled No. indicates that the part is not shown in the figure.

No.	Part No.	Part Name	PUZ-HA42NKA2	Wiring Diagram Symbol	Remarks
1	T7W B13 304	LEAD WIRE ASSEMBLY	1		
2	T7W B14 304	LEAD WIRE ASSEMBLY	1		
3	T7W B15 304	LEAD WIRE ASSEMBLY	1		
4	T7W B16 304	LEAD WIRE ASSEMBLY	1		
5	T7W B17 304	LEAD WIRE ASSEMBLY	1		
6	T7W A33 304	LEAD WIRE ASSEMBLY	1		
7	T7W A34 304	LEAD WIRE ASSEMBLY	1		
8	T7W A35 304	LEAD WIRE ASSEMBLY	1		
9	T7W A37 304	LEAD WIRE ASSEMBLY	1		
10	T7W A38 304	LEAD WIRE ASSEMBLY	1		
11	T7W A36 304	LEAD WIRE ASSEMBLY	1		
12	T7W B18 304	LEAD WIRE ASSEMBLY	1		
13	T7W A13 304	LEAD WIRE ASSEMBLY	1		
14	T7W A14 304	LEAD WIRE ASSEMBLY	1		
15	T7W A15 304	LEAD WIRE ASSEMBLY	1		
16	T7W A16 304	LEAD WIRE ASSEMBLY	1		

# **mitsubishi electric corporation**

HEAD OFFICE: TOKYO BUILDING, 2-7-3, MARUNOUCHI, CHIYODA-KU, TOKYO 100-8310, JAPAN

---

©Copyright 2023 MITSUBISHI ELECTRIC CORPORATION  
Issued: Jun. 2026 No.OCB821A  
Published: Dec. 2023 No.OCB821  
Made in Japan

Specifications are subject to change without notice.