

Job Name:

Schedule Reference:

Date:

Procon MelcoBEMS MINI (A1M)

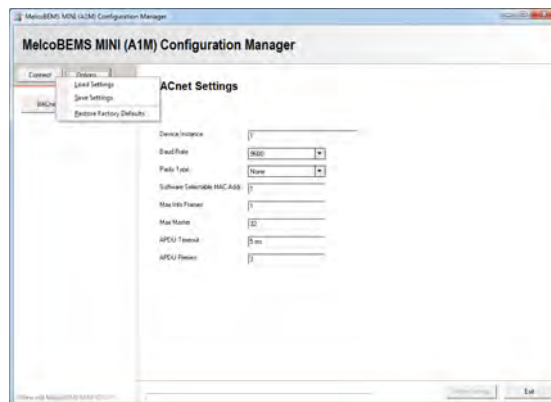


SPECIFICATIONS

- Allows for a third party building management system to control a Mitsubishi Electric Cooling & Heating CITY MULTI®, M-Series, or P-Series indoor unit.
- One MelcoBEMS MINI (A1M) per indoor unit
- Indoor Unit Connection: CN105 – IT Terminal
- 12VDC power from indoor unit CN105 Connector
- Compatible with MAC-333IF connector CN505 IT *
*requires additional 12VDC power supply with MAC-333IF
- Communication protocols supported:
 - BACnet® MSTP (RS-485) with addressing 1-127
 - MODBUS RTU (RS-485) with addressing 1-247
- LED light notification status of valid communication between:
 - AC ACK Procon and Indoor unit
 - RS-485 ACK Procon and BACnet®/MODBUS networks
- Approximate cable length is 39 in. (1000 mm)
- Dimensions: 3.74 x 2 x 0.75 in. (95 x 51 x 19 mm)
- MODUS point table please refer to manual

CONFIGURATION TOOL: MELCOBEMS MINI v1.0.0.0.b.exe

- Software downloadable from MESCA Web Site
- Software tool to setup BACnet® setting through Modbus Table
- Requires USB to RS-485 Adapter



USB to RS-485

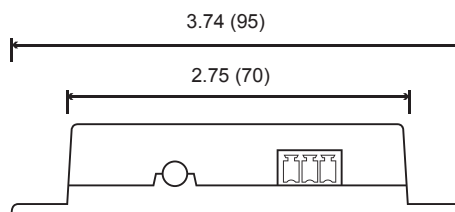
M & P-Series

SYSTEM DIAGRAM



DIMENSIONS

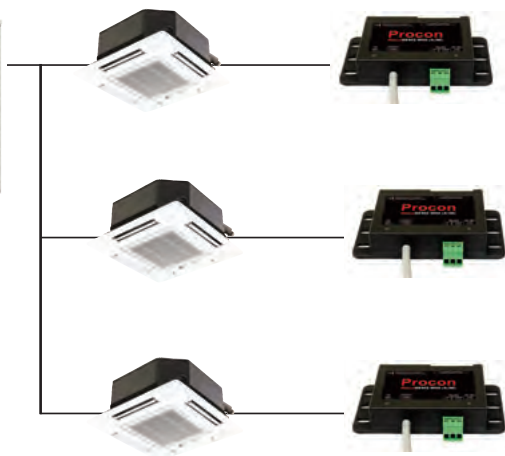
Units: in. (mm)



Front View

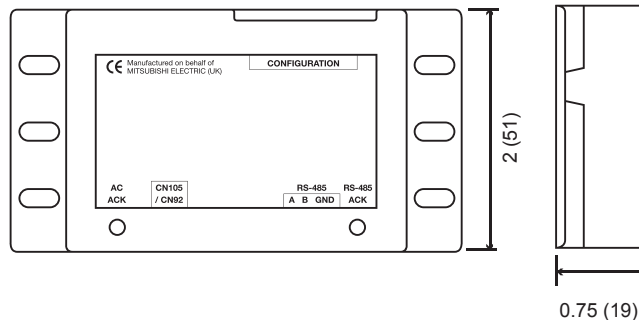


City Multi



Top View

Side View



Specifications are subject to change without notice.