

## SUBMITTAL DATA: MLZ-KP09NA(2)-U1

9,000 BTU/H 1-WAY CEILING CASSETTE INDOOR UNIT FOR MXZ MULTI-ZONE HEAT PUMP SYSTEM

|                     |  |       |
|---------------------|--|-------|
| Job Name:           | Location:  | Date: |
| Purchaser:          | Engineer:  |       |
| Submitted to:       | For <input type="checkbox"/> Reference <input type="checkbox"/> Approval <input type="checkbox"/> Construction |       |
| System Designation: | Schedule No.:  |       |



### INDOOR UNIT FEATURES

- Available sizes: 9, 12, 18 kBtu/h
- Fits between 16" joists
- Stylish, square design panel
- Built in condensate lift mechanism (19.6")
- Serviceable from the bottom (electrical and flare connections)
- Adjustable fan speeds and vane directions

### ACCESSORIES:

Grille.....(Required ordered separately) ..... MLP-444WU  
 Auxilliary Heat Connector Cable.....(MAC-1710RA-U)

### Optional Controls

Wireless Controller (MHK2)  
 Wired Remote Controller (PAR-40MAA) (Requires MAC-334IF-E)  
 Thermostat Interface (PAC-US444CN-1)  
 System Control Interface (MAC-334IF-E)

### SPECIFICATIONS:

| Rated Capacity*              |           |        |
|------------------------------|-----------|--------|
| Cooling <sup>1</sup>         | Btu/h / W | 9,000  |
| Heating at 47°F <sup>2</sup> | Btu/h / W | 12,000 |

Rating Conditions per AHRI Standard:

<sup>1</sup> Cooling | Indoor: 80° F (27° C) DB / 67° F (19° C) WB; Outdoor: 95° F (35° C) DB / 75° F (24° C) WB

<sup>2</sup> Heating at 47°F | Indoor: 70° F (21° C) DB / 60° F (16° C) WB; Outdoor: 47° F (8° C) DB / 43° F (6° C) WB

For data on specific indoor units (all ducted, all non-ducted)  
 combinations, see the MXZ Technical and Service Manual.

Applications should be restricted to comfort cooling only; equipment cooling applications are not recommended for low ambient temperature conditions.

|                               |                            |  |
|-------------------------------|----------------------------|--|
| Electrical Power Requirements | 208 / 230V, 1-Phase, 60 Hz |  |
|-------------------------------|----------------------------|--|

|                                  |   |   |
|----------------------------------|---|---|
| Minimum Circuit Ampacity (MCA) * | A | 1 |
|----------------------------------|---|---|

\* All electrical work shall comply with National (CEC) and local codes and regulations.

|                    |        |      |
|--------------------|--------|------|
| Blower Motor (ECM) | F.L.A. | 0.68 |
|--------------------|--------|------|

|                     |   |    |
|---------------------|---|----|
| Blower Motor Output | W | 30 |
|---------------------|---|----|

|                           |         |            |
|---------------------------|---------|------------|
| Field Drainpipe Size O.D. | In.(mm) | 1-1/4 (32) |
|---------------------------|---------|------------|

| Airflow Rate (Quiet - Lo - Med - Hi - Super Hi) |     |     |                 |
|---|-----|-----|-----------------|
| Cooling   | DRY | CFM | 212-254-282-311 |
| Heating   | WET |     | 180-219-252-282 |
|   | DRY |     | 212-247-290-325 |

| Sound Pressure Level (Quiet - Lo - Med - Hi - Super Hi) |       |             |
|---|-------|-------------|
| Cooling   | dB(A) | 27-31-34-38 |
| Heating   |       | 26-29-34-37 |

|                                 |         |   |
|---------------------------------|---------|---|
| External Dimensions (H x W x D) | In.(mm) | 7-5/16 x 43-3/8 x 14-3/16<br>(185 x 1102 x 360) |
|---------------------------------|---------|---|

|            |          |         |
|------------|----------|---------|
| Net Weight | Lbs.(kg) | 34 (15) |
|------------|----------|---------|

|                 |                       |  |
|-----------------|-----------------------|--|
| External Finish | Munsell No.3Y 7.8/1.1 |  |
|-----------------|-----------------------|--|

| Refrigerant Piping (Flared) |         |            |
|-----------------------------|---------|------------|
| Liquid (High Pressure)      | In.(mm) | 1/4 (6.35) |
| Gas (Low Pressure)          |         | 3/8 (9.52) |

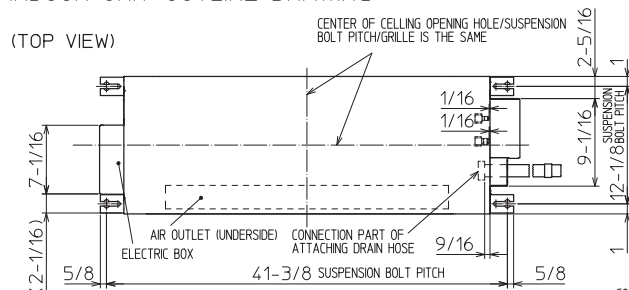
Should this document be altered or changed without MESCA's permission, it becomes null and void. MESCA assumes no responsibility for any consequences in such cases.

Specifications are subject to change without notice.

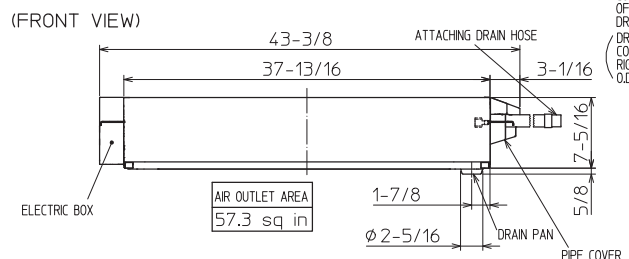
**DIMENSIONS: MLZ-KP09NA(2)-U1**

### INDOOR UNIT OUTLINE DRAWING

(TOP VIEW)

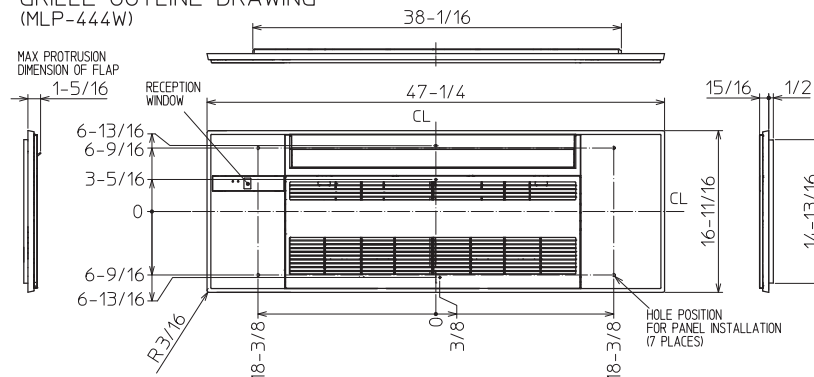


(FRONT VIEW)



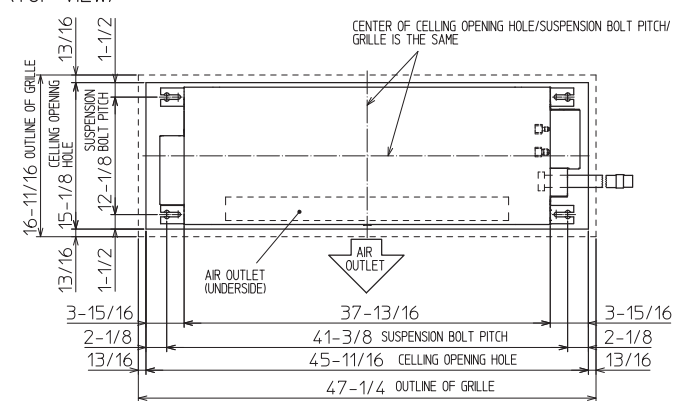
## GRILLE OUTLINE DRAWING

(MLP-444W)

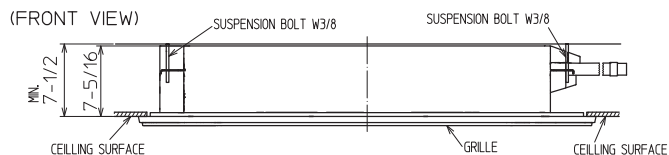


### INDOOR UNIT DETAIL VIEW

INDOOR C  
(TOP VIEW)

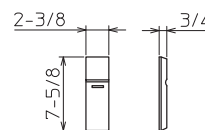


(FRONT VIEW)

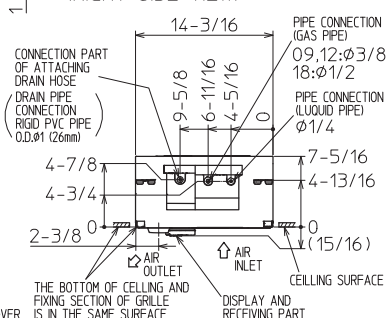


## REMOTE CONTROLLER OUTLINE DRAWING

Unit: in.



(RIGHT SIDE VIEW)



|                        |                     |  |                           |
|------------------------|---------------------|--|---------------------------|
|                        |                     | KP09/12NA  | KP18NA                    |
| EXTENSION<br>PIPE      | LIQUID PIPE<br>O.D. | ø1/4   |                           |
|                        | GAS PIPE<br>O.D.    | ø3/8   | ø1/2                      |
| CONNECTIONS<br>OF PIPE | LIQUID PIPE         | FLARED CONNECTION<br>ø1/4  |                           |
|                        | GAS PIPE            | FLARED CONNECTION<br>ø3/8  | FLARED CONNECTION<br>ø1/2 |
| DRAIN HOSE             |                     | HEAT INSULATOR O.D. CONNECTION I.D. EFFECTIVE LENGTH<br>ø1-1/4 ø1 18-7/8 |                           |
| DRAIN PIPE CONNECTION  |                     | RIGID PVC PIPE O.D. ø1 (26mm)  |                           |

NOTE1. CUT THE DRAIN HOSE (ACCESSORY) FOR USE, IF NECESSARY.

THE METHOD FOR STANDING  
DRAIN FROM INDOOR UNIT  
※ CUT THE DRAIN HOSE (ACCESSORY)  
FOR USE, IF NECESSARY.

