



Heating and Cooling

Job Name: _____ Engineer: _____
 Purchaser: _____
 Location: _____
 Submitted To: _____ For: Reference Approval Construction
 Submitted By: _____
 Unit Designation: _____ Schedule No. _____

SUBMITTAL DATA: MSZ-FH06NA / MUZ-FH06NA(H)

Capacities:

Cooling Rated (Max. - Min) Btu / hr 6,000 (9,000 – 1,700)
 Cooling Rated Power (Max. - Min) Watts 315 (560 - 100)
 SEER (SEER2) / EER (EER2) 33.1(32.2) / 19.1 (19.0)
 Sensible Heat Ratio 0.920
 Moisture Removal Pints/hr..... 0.6
 Heating @47F :Rated (Max.- Min.) Btu / hr 8,700 (14,000 – 1,600)
 Heating @47F :Rated Power (Max. - Min) Watts 545 (1,270 - 110)
 Heating @17F :Rated (Max.) Btu / hr 5,900 (10,700)
 Heating @17F :Power (Max. Power) Watts 500 (1,000)
 HSPF IV NA (NAH) [HSPF2] / COP @ 47F 13.5 (12.5)[10.9] / 4.68
 Heating @5F :Rated (Max.) Btu / hr 8,700

Indoor Unit Specification:

Power Supply *1 208/230Vac 1ϕ 60Hz
 MCA(Indoor only).....
 Weight 29 lbs (13.15 Kg)
 Sound (quiet-L-M-H super H) cooling 20-23-29-36-40 dB(A)
 Sound (quiet-L-M-H-super H) heating 20-24-29-36-42 dB(A)
 Airflow (quiet-L-M-H super H) Dry CFM 137-167-221-304-381
 Airflow (quiet-L-M-H super H) Wet CFM 117-143-190-261-326
 Airflow (quiet-L-M-H super H) Heat Dry CFM 140-167-225-325-437
 Moisture removal 0.2 pt./h

Refrigerant Piping:

Liquid 1/4" (6.35mm)
 Gas 3/8" (9.52mm)
 Connection method..... flared
 Condensate drain connection OD 5/8 (15.88)

Operating Range (Rating Conditions per AHRI Standard)			
Mode	Indoor Intake Air Temp.		Outdoor Intake Air Temp.
Cooling	Max.	90°F/32°C D.B. 73°F/23°C W.B.	115°F/46°C D.B.
	Min.	67°F/19°C D.B. 57°F/14°C W.B.	14°F/-10°C D.B.
Heating	Max.	80°F/27°C D.B. 67°F/19°C W.B.	75°F/24°C D.B. 65°F/18°C W.B.
	Min.	70°F/21°C D.B. 60°F/15°C W.B.	-13°F/-25°C D.B. -14°F/-22.5°C W.B.

Controller Options :

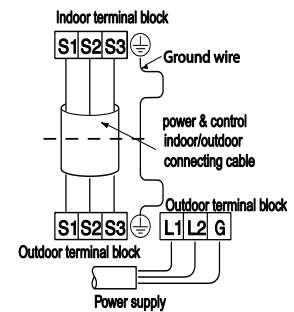
- Wireless Wall-mounted Remote Controller Kit (MHK1)*
- Portable Central Controller (MCCH1)*
- Outdoor Air Sensor (MOS1)*
- Wired Wall-mounted Controller (PAR-31MAA requires MAC-333IF)*
- Simple MA Remote Controller (PAC-YT53CRAU requires MAC-333IF)*
- Control Interface (MAC-333IF)(RemoteON/OFF) (Remote error/operation display)
- Auxiliary HEAT output signal on CN24 requires optional cable MAC-1710RA-U

*See Submittal for information on each option.

Above capacity based on AHRI 210/240 test condition
Specification subject to change without notice



Indoor - Outdoor Power Connection



Electrical Wiring:*1 Indoor unit Power is supplied by the outdoor unit on terminals S1, S2 Main Input power on terminal L1 and L2

Standard Features:

- Highly energy-efficient system with quiet operation
- Energy Star rated
- "Powerful Mode" function permits system to temporarily run at a lower/higher temperature with an increased fan speed, which quickly brings the room to the optimum comfort level
- Pre-charged Refrigerant (up to 25ft. / 7.6M of piping one way)
- 5 year parts, 7 years compressor warranty
- Base Heater (MAC-640BH-U) included in MUZ-FH09NAH
- Easy maintenance with self-diagnostic feature
- Nano Platinum air purifying filter
- Variable compressor speed inverter technology
- Low ambient cooling (14°F/-10°C)
- Auto change-over between heating and cooling modes.
- Low ambient heating cut-out / restart temp. (-18°F/-27°C) (-14°F/-25°C)
- COP at 5°F / 2.45

Should this document be altered or changed without MESCA's permission, it becomes null and void. MESCA assumes no responsibility for any consequences in such cases.

SUBMITTAL DATA: MSZ-FH06NA / MUZ-FH06NA(H)

***All electrical work shall comply with National (CEC) and local codes and regulations.**

Outdoor Unit Specification:

Power Supply**1	208/230Vac 1Φ 60Hz
MCA.....(*).....	11A
Breaker size.....	15A
Weight.....	81 lbs (36.7Kg)
Sound (cooling).....	49 dB(A)
Sound (Heating).....	51 dB(A)

Refrigerant Piping:

Liquid	1/4" (6.35mm)
Gas	3/8" (9.52mm)
Max. height difference	40 ft. (12.5m)
Max. length	65 ft. (19.8m)
Connection Method.....	flared

Optional Controls:

- MAC-333IF-E (M-Net control or BMS control through LonWorks or BacNet)
- Wireless Controller (MHK1)
- MAC-333IF-E (Remote ON/OFF)
- PAR-31MAA (Wired remote controller with MAC-333IF-E)



- Windscreens (ME-FR-15-17)

Note: Mitsubishi Electric (MESCA) supports the use of only MESCA supplied and approved Snow Guard / Wind Deflectors / Windscreens and accessories for proper functioning of the unit(s). Use of non-MESCA supported Snow Guard / Wind Deflectors / Windscreens and accessories will affect warranty coverage.

Should this document be altered or changed without MESCA's permission, it becomes null and void. MESCA assumes no responsibility for any consequences in such cases.

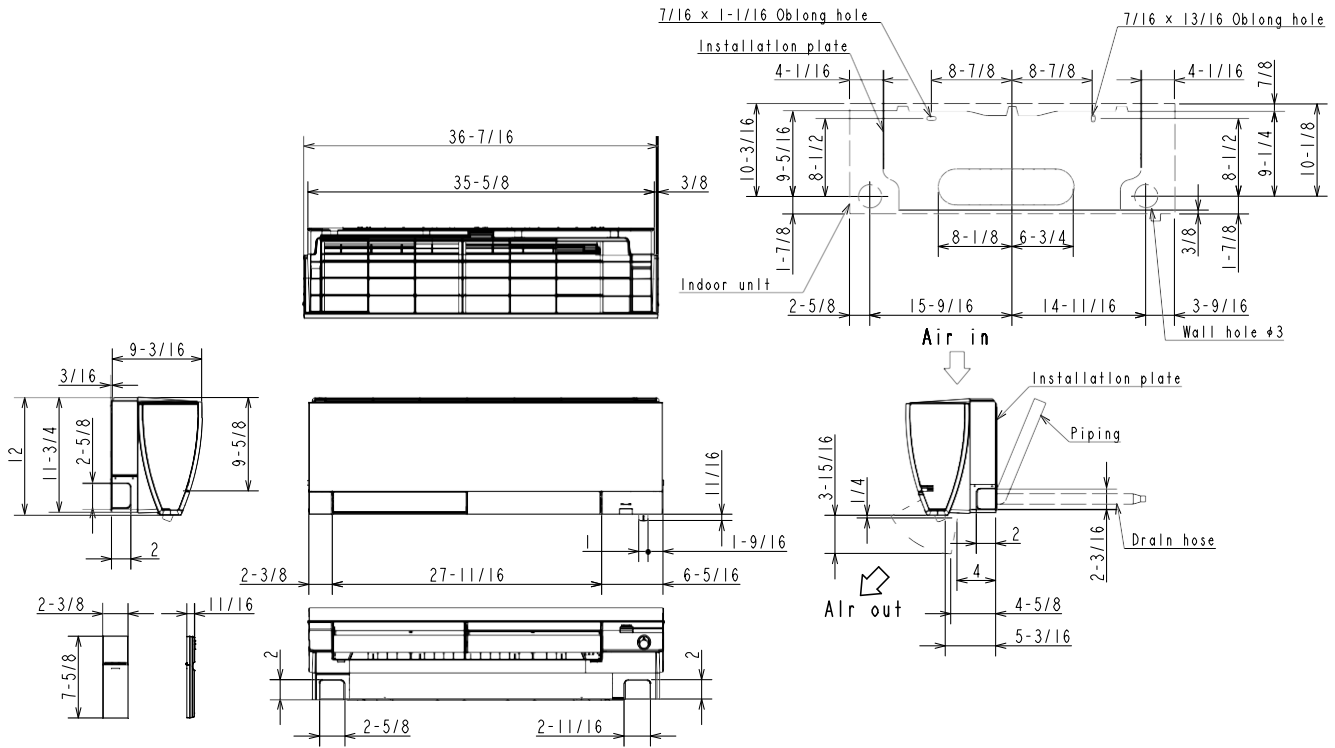
Specification subject to change without notice

Dimension inch (mm)

Notes:

MSZ-FH06NA

Unit: inch



(MSZ-FH06/09/12NA)

Piping	Insulation	φ1-7/16 O.D
	Liquid line	φ1/4 19-11/16 (Flared connection φ1/4)
	Gas line	φ3/8 16-15/16 (Flared connection φ3/8)
Drain hose	Insulation	φ1-1/8 Connected part φ5/8 O.D

Specification subject to change without notice

Notes:

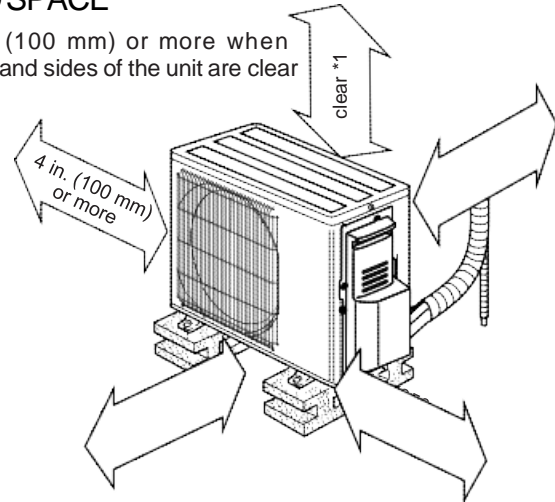
Should this document be altered or changed without MESCA's permission, it becomes null and void. MESCA assumes no responsibility for any consequences in such cases.

MUZ-FH06NA

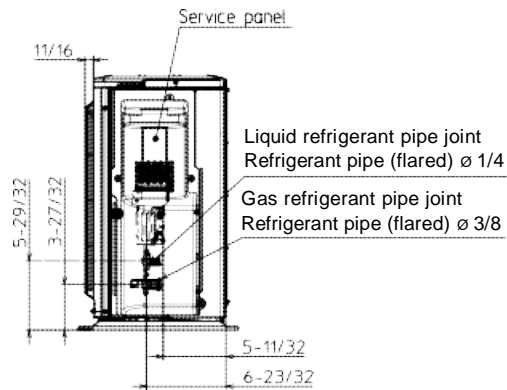
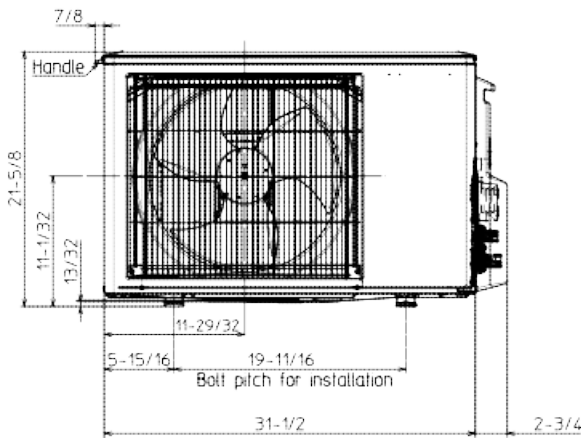
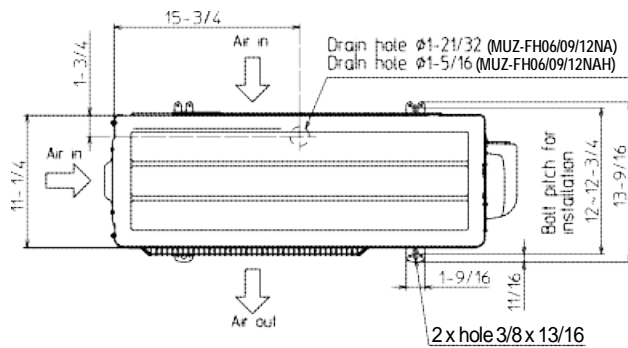
Unit: inch

REQUIRED SPACE

*1 4 in. (100 mm) or more when front and sides of the unit are clear



*2 When any 2 sides of left, right and rear of the unit are clear



NOTE: Mount unit 12 inches above local snow height



Should this document be altered or changed without MESCA's permission, it becomes null and void. MESCA assumes no responsibility for any consequences in such cases.