

|               |               |              |               |
|---------------|---------------|--------------|---------------|
| Job Name:     | Location:     |              |               |
| Purchaser:    | Submitted By: |              |               |
| Submitted To: | Reference:    | Approval:    | Construction: |
| Engineer:     | Date:         | Application: |               |



Optional Controller

Images provided for reference purposes only

| Outdoor Standard Features:  | Description:   |
|-----------------------------|--|
| Blue Fin Coating            | Prolong condenser operating life                                 |
| Inverter Motor              | Energy efficient operation with variable speed DC motor          |
| Built in base pan heater    | Automated control to prevent premature failure of condenser coil |
| Auto mode                   | Automatically switches between heating & cooling modes           |
| Fast Auto restart           | Automatically restarts after power failure return                |
| Auxiliary heat lock out     | Prevents premature activation of aux. heat                       |
| Automated compressor cutout | Prevents inefficient operation & protects compressor             |
| Cold climate heat pump      |  |
|                             |  |

| Indoor Standard Features:          |
|------------------------------------|
| Vane, Louver and Vent control      |
| Lossnay connections and control    |
| Daily and Weekly ON/OFF timers     |
| Emergency operation                |
| Wash filter notification           |
| Auto fan speed mode                |
| Wired and Wireless control options |

| Description: (Optional Accessories) | Model No.                  |
|-------------------------------------|----------------------------|
| Front Windscreen                    | CM-S-FR-NKMU (x2 required) |
| Front Windscreen Blocker            | CM-S-BLK-NKMU (x2 per box) |
| Rear Snow Guard                     | SG-1-RE                    |
| Side Snow Guard                     | SG-1-SD                    |
|                                     |                            |
| High Efficiency Filter Element      | PAC-SH90KF-E               |
| Drain Pump                          | PAC-SH84DM-E               |
|                                     |                            |

**Note:**

- Mitsubishi Electric Sales Canada Inc. (MESCA) supports the use of only MESCA supplied and approved components and accessories for proper functioning of the unit(s). Use of non - MESCA supported components and accessories will affect warranty coverage. MESCA recommends (A) consideration of all applicable design and application parameters and requirements specific to any project.
- Should any person change this document in any manner whatsoever without MESCA's written permission, the document shall be of no force and effect and any change shall be deemed to be a representation and warranty made by that person and not MESCA. That person, and not MESCA, shall assume full responsibility for the consequences of such changes. MESCA assumes no responsibility for any consequences in such cases.

# Submittal Data: PCA-A36KA8 & PUZ-HA36NKA

## Performance:

|                               |                      |         |                 |
|-------------------------------|----------------------|---------|-----------------|
| Cooling at 95°F <sup>1</sup>  | Rated Capacity       | Btu/h   | 34,000          |
|                               | Capacity Range       | Btu/h   | 14,900 - 34,000 |
|                               | Rated Power Input    | W       | 2,700           |
|                               | Power Input Range    | W       | 1,010 - 2,700   |
|                               | Moisture Removal     | pints/h | 7.9             |
|                               | Sensible Heat Factor |         | 0.74            |
| Heating at 47°F <sup>2</sup>  | Rated Capacity       | Btu/h   | 38,000          |
|                               | Capacity Range       | Btu/h   | 17,400 - 40,000 |
|                               | Rated Power Input    | W       | 3,360           |
|                               | Power Input Range    | W       | 1,100 - 3,700   |
| Heating at 17°F <sup>3</sup>  | Maximum Capacity     | Btu/h   | 38,000          |
|                               | Rated Capacity       | Btu/h   | 25,400          |
|                               | Capacity Range       | Btu/h   | NA - 38,000     |
|                               | Maximum Power Input  | W       | 5,275           |
|                               | Rated Power Input    | W       | 3,125           |
|                               | Power Input Range    | W       | NA - 5,275      |
| Heating at 5°F <sup>4</sup>   | Maximum Capacity     | Btu/h   | 38,000          |
|                               | Maximum Power Input  | W       | 6,093           |
| Heating at -13°F <sup>5</sup> | Maximum Capacity     | Btu/h   | 30,400          |
|                               | Maximum Power Input  | W       | 6,224           |

## Efficiency:

|                          |                  |           |
|--------------------------|------------------|-----------|
| SEER2                    |                  | 18.0      |
| EER2 <sup>1</sup>        |                  | 12.5      |
| HSPF2 (IV) / (V)         |                  | 9.2 / 7.7 |
| COP at 47°F <sup>2</sup> | Rated Capacity   | 3.31      |
| COP at 17°F <sup>3</sup> | Maximum Capacity | 2.11      |
| COP at 5°F <sup>4</sup>  | Maximum Capacity | 1.82      |

## Electrical:

|  |      |                     |
|--|------|---------------------|
| Power Supply                             |      | 208/230V, 1Ph, 60Hz |
| Voltage: Indoor - Outdoor, S1-S2         | V AC | AC 208/230V         |
| Voltage: Indoor - Outdoor, S2-S3         | V DC | DC 24V              |
| Short-circuit Current Rating (SCCR)      | kA   | 5                   |
| Recommended Fuse/Breaker Size (Outdoor)  | A    | 35                  |
| Recommended Wire Size (Indoor - Outdoor) | AWG  | 14                  |

## Outdoor Operating Temperature Range:

|  |         |                        |
|--|---------|------------------------|
| Cooling Operation Air Temp (Maximum / Minimum)*            | °F (°C) | * 0 to 115 (-18 to 46) |
| Cooling Operation Thermal Lock-out / Re-start Temperatures | °F (°C) | -1 / 3 (-18 / -16)     |
| Heating Operation Air Temp (Maximum / Minimum)             | °F (°C) | -13 to 75 (-25 to 24)  |
| Heating Operation Thermal Lock-out / Re-start Temperatures | °F (°C) | -22 / -13 (-30 / -25)  |

AHRI Rated Conditions (Rated data is determined at a fixed compressor speed) (\* Windscreens required for cooling operations below 23°F (-5°C))

<sup>1</sup>Cooling (Indoor // Outdoor) 80°F (26.6°C) DB, 67°F (19.4°C) WB // 95°F (35°C) DB, 75°F (23.9°C) WB

<sup>2</sup>Heating at 47°F (8.3°C) (Indoor // Outdoor) 70°F (21.1°C) DB, 60°F (15.6°C) WB // 47°F (8.3°C) DB, 43°F (6.1°C) WB

<sup>3</sup>Heating at 17°F (-8.3°C) (Indoor // Outdoor) 70°F (21.1°C) DB, 60°F (15.6°C) WB // 17°F (-8.3°C) DB, 15°F (-9.4°C) WB

Rated conditions:

<sup>4</sup>Heating at 5°F (-15°C) (Indoor // Outdoor) 70°F (21.1°C) DB, 60°F (15.6°C) WB // 5°F (-15°C) DB, 4°F (-15.6°C) WB

<sup>5</sup>Heating at -13°F (-25°C) (Indoor // Outdoor) 70°F (21.1°C) DB, 60°F (15.6°C) WB // -13°F (-25°C) DB, -15°F (-26.1°C) WB

Notes:

# Submittal Data: PCA-A36KA8 & PUZ-HA36NKA

## Indoor Unit Specifications:

|                                 |             |                            |
|---------------------------------|-------------|----------------------------|
| MCA                             | A           | 2.00                       |
| Blower Motor Full Load Amperage | A           | 160                        |
| Blower Motor Output             | W           | 0.97                       |
| Airflow Rate at Cooling, Dry    | CFM         | 775 - 850 - 920 - 990      |
| Airflow Rate at Cooling, Wet    | CFM         | 705 - 775 - 850 - 920      |
| Airflow Rate at Heating, Dry    | CFM         | 775 - 850 - 920 - 990      |
| Sound Pressure Level (Cooling)  | dB(A)       | 37 - 39 - 41 - 43          |
| Sound Pressure Level (Heating)  | dB(A)       | 37 - 39 - 41 - 43          |
| Drain Pipe Size                 | In. (mm)    | 1-1/32 (26)                |
| External Finish Color           |             | White Munsell 6.4Y 8.9/0.4 |
| Unit Dimensions                 | W: In. (mm) | 63 (1,600)                 |
|                                 | D: In. (mm) | 26-3/4 (680)               |
|                                 | H: In. (mm) | 9-1/16 (230)               |
| Unit Weight                     | Lbs. (kg)   | 79 (36)                    |

## Outdoor Unit Specifications:

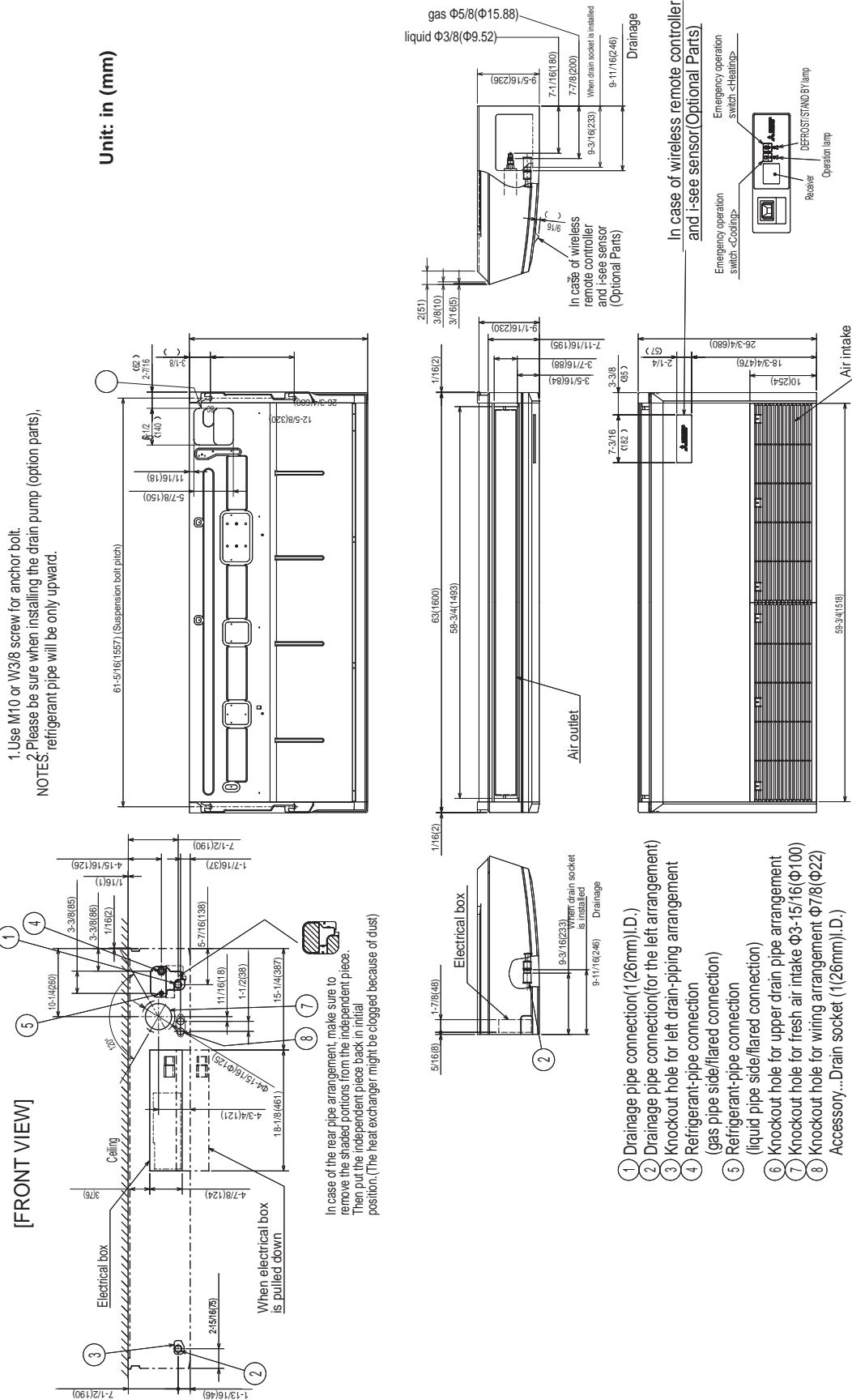
|  |             |                             |
|--|-------------|-----------------------------|
| MCA  | A           | 26                          |
| MOCP                                       | A           | 42                          |
| Fan Motor Output                           | W           | 74 + 74                     |
| Airflow Rate (Cooling/Heating)             | CFM         | 3,880 / 3,880               |
| Sound Pressure Level, Cooling <sup>1</sup> | dB(A)       | 52                          |
| Sound Pressure Level, Heating <sup>2</sup> | dB(A)       | 53                          |
| Refrigerant Control                        |             | LEV                         |
| Compressor Oil Type / Charge               | oz.         | FV50S / 47 oz               |
| External Finish Color                      |             | Ivory Munsell No.3Y 7.8/1.1 |
| Unit Weight                                | Lbs. (kg)   | 261 (118)                   |
| Unit Dimensions                            | W: In. (mm) | 41-11/32 (1,050)            |
|  | D: In. (mm) | 12-63/64 + 63/64 (330 +25)  |
|  | H: In. (mm) | 52-43/64 (1,338)            |
| Gas Pipe Size O.D. (Flared)                | In. (mm)    | 5/8 (15.88)                 |
| Liquid Pipe Size O.D. (Flared)             | In. (mm)    | 3/8 (9.52)                  |
| Maximum Piping Length                      | Ft. (m)     | 245 (75)                    |
| Maximum Height Difference                  | Ft. (m)     | 100 (30)                    |

## Description: (Optional Controls)

## Model No.

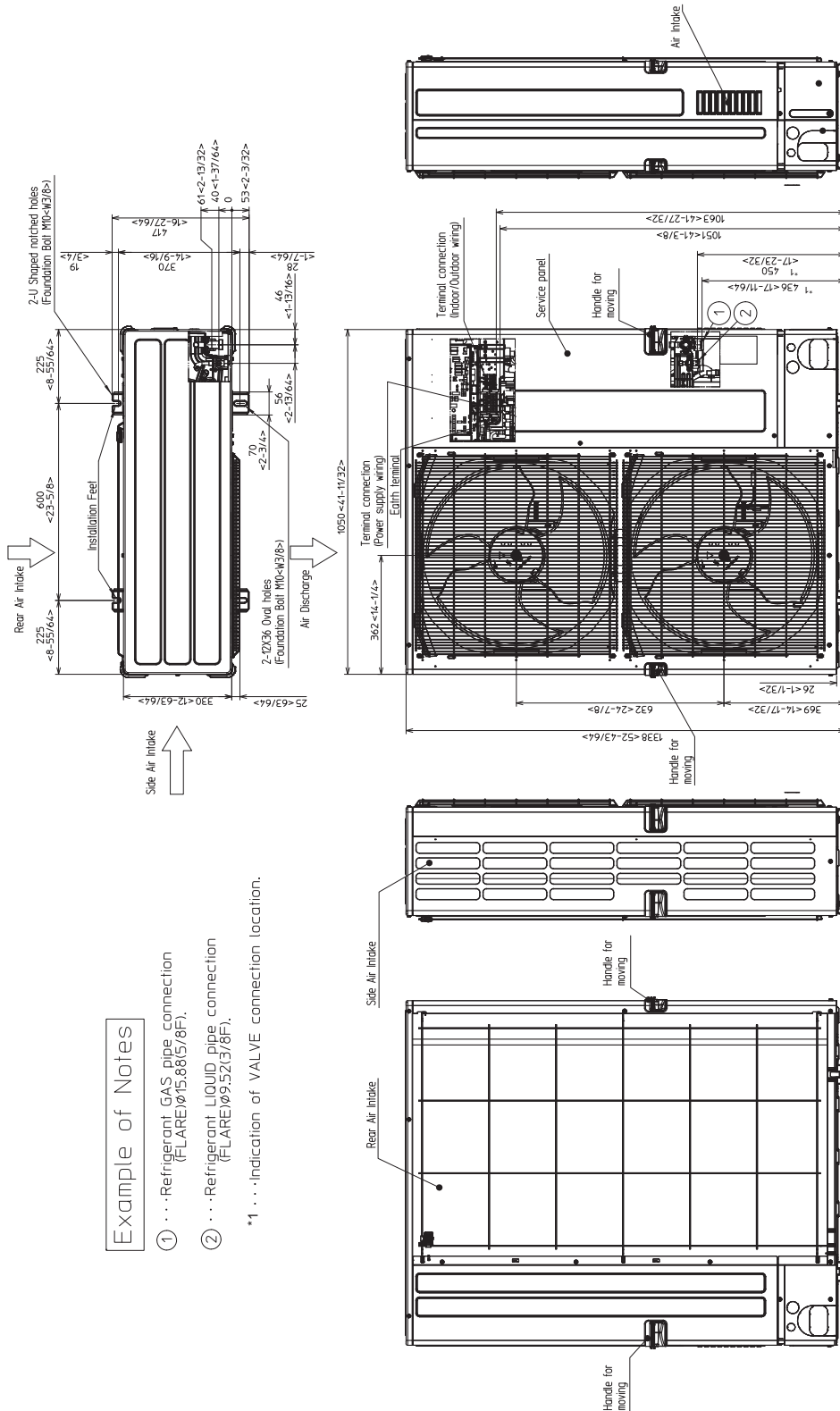
|  |                   |
|--|-------------------|
| Building automated system DDC Interface          | MELCO-RETAIL-MINI |
| Building automated system BacNet Interface       | MELCO-BEMS-MINI   |
| Operation/error display adapter                  | PAC-SA88HA-EP     |
| Remote ON/OFF control                            | PAC-SE55RA-E      |
| Remote compress ON/OFF control                   | PAC-SC36NA-E      |
| Wireless remote control                          | PAR-FL32MA-E      |
| Wired wall mounted remote control                | PAR-41MAAU        |
| Wireless wall mounted remote control             | MHK2              |
| Touch screen wired wall mounted control          | PAR-CT01MAU-SB    |
| Basic wired wall mounted control                 | PAC-YT53CRAU-J    |
| External heat control adapter                    | PAC-SE56RA-E      |
| Remote Operation Adapter                         | PAC-SF40RM-E      |
| Controller kit w/ i-see sensor                   | PAR-SA92MW-E      |
| Controller kit (send / receive only)             | PAR-SL93B-E       |
| i-see Sensor                                     | PAC-SH91MK-E      |
| Heater control relay                             | PAM-4             |
| Deluxe thermostat interface                      | RMF-CA100         |
| MNet adapter (BacNet/LonWorks BAS sub interface) | PAC-SJ95MA-E      |
|  |                   |
|  |                   |

## Indoor Unit Outline and Dimensions:



## Outdoor Unit Outline and Dimensions:

Unit: mm<in>



**Example of Notes**

- ① Refrigerant GAS pipe connection (FLARE)φ15.88(5/8F).
- ② Refrigerant LIQUID pipe connection (FLARE)φ9.52(3/8F).

\*1 ... Indication of VALVE connection location.

