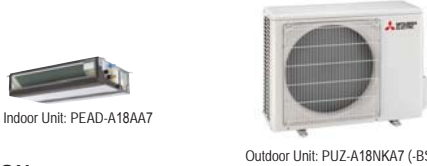


SUBMITTAL DATA: PEAD-A18AA7 & PUZ-A18NKA7
18,000 BTU/H HORIZONTAL-DUCTED HEAT-PUMP SYSTEM

Job Name:	Engineer:
Purchaser:	Application:
Submitted To:	For: <input type="checkbox"/> Reference <input type="checkbox"/> Approval <input type="checkbox"/> Construction
Submitted By:	Location:
System Designation:	Schedule No.:



UNIT OPTION:

Standard Model.....PUZ-A18NKA7
Seacoast (BS) Model.....PUZ-A18NKA7-BS

ACCESSORIES:

Indoor Unit

Filter Box (PAC-KE92TB-E)
External Heating Adaptor (PAC-YU25HT)

Controls

Wireless Controller (MHK1)
Advanced Wired Controller (PAR-32MAA / PAR-33MAA)
Simple Wired Controller (PAC-YT53CRAU)
Wireless Remote Controller (PAR-FL32MA) + Wireless Signal Receiver (PAR-FA32MA)
Thermostat Interface (PAC-US444CN)
M-NET Adapter (PAC-SJ19MA-E)

Outdoor Unit

Front Wind Guard (PFR-12-18)
Rear Wind Guard (PRE-12-18)
Side Wind Guard (PSD-12-18)

Note: Mitsubishi Electric (MESCA) supports the use of only MESCA supplied and approved Snow Guard / Wind Deflectors / Windscreens and accessories for proper functioning of the unit(s). Use of non-MESCA supported Snow Guard / Wind Deflectors / Windscreens and accessories will affect warranty coverage.

SPECIFICATIONS:

Rated Conditions (Capacity / Input)*		
Cooling	Btu/h / W	18,000 / 1,660
Heating at 47° F	Btu/h / W	19,000 / 1,400
Heating at 17° F	Btu/h / W	11,000 / 1,350

* Rating Conditions per AHRI Standard:
Cooling | Indoor: 80° F (27° C)DB / 67° F (19° C)WB; Outdoor: 95° F (35° C)DB / 75° F (24° C)WB
Heating at 47° F | Indoor: 70° F (21° C)DB / 60° F (16° C)WB; Outdoor: 47° F (8° C)DB / 43° F (6° C)WB
Heating at 17° F | Indoor: 70° F (21° C)DB / 60° F (16° C)WB; Outdoor: 17° F (-8° C)DB / 15° F (-9° C)WB

Capacity Range		
Cooling	Btu/h	8,000 - 18,000
Heating at 47° F	Btu/h	7,900 - 22,000

Operating Range	
Cooling	0°F** (-18°C) to 115°F (46°C) DB
Heating	12°F (-11°C) to 70°F (21°C) DB

** Windscreens required for cooling operation below 23°F (-5°C)

AHRI Efficiency Rating	
EER	10.8
SEER	19.9
HSPF IV / V	10.2 / 7.6
COP at 47° F	3.97
COP at 17° F	2.38

Specifications are subject to change without notice.

Electrical Power Requirements	208 / 230V, 1-Phase, 60 Hz
-------------------------------	----------------------------

Minimum Circuit Ampacity (MCA) *	Breaker Size	MOCP (Outdoor)
Indoor 1.69 AMP	Outdoor 11 AMP	15 AMP
		28 AMP

* All electrical work shall comply with National (CEC) and local codes and regulations.

Indoor Unit		
Blower Motor (ECM)	F.L.A.	1.35
Blower Motor Output	W	85
SHF / Moisture Removal		0.77 / 3.7 pt./h
External Static Pressure	In. WG	0.14-0.20-0.28-0.40-0.60
Drain Lift Mechanism (Included)	H: In.	27-9/16
		Drainpipe Size O.D [in. (mm)] - 1-1/4 (32)

Outdoor Unit		
Compressor		DC INVERTER-driven Scroll
Fan Motor (ECM)	F.L.A.	0.5
Fan Motor Power	W	46

Airflow Rate (Low-Mid-Hi)			
Indoor (Cooling)	DRY	CFM	424-512-600
	WET		384-472-560
Outdoor	DRY		1,590

Sound Pressure Level		
Indoor (Low-Mid-Hi)		30-33-37
Outdoor	Cooling	44
	Heating	46

External Dimensions		
Indoor (H x W x D)	In.(mm)	9-7/8 x 35-7/16 x 28-7/8 (250 x 900 x 732)
Outdoor (H x W x D)		24-13/16 x 31-13/16 + 7/16 x 11-3/16 (630 x 809 + 62 x 300)

Net Weight		
Indoor	Lbs.(kg)	62 (28)
Outdoor		100 (45)

External Finish	
Indoor	Galvanized-steel Sheet
Outdoor	Ivory Munsell No. 3Y 7.8 / 1.1

Refrigerant	R410A ; 4lbs., 14oz. (2.2kg)
-------------	------------------------------

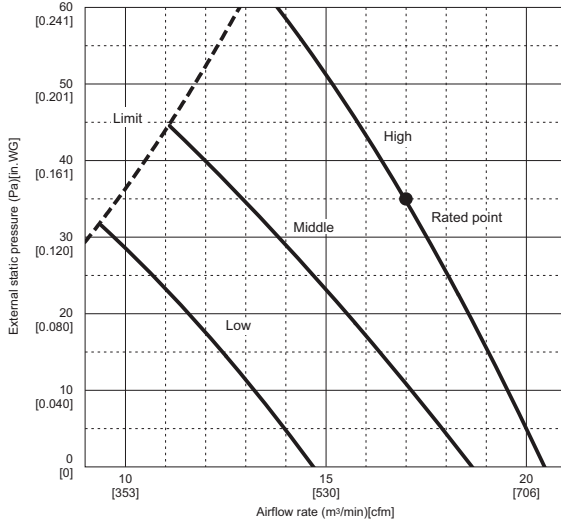
Refrigerant Piping (Flared)		
Liquid (High Pressure)	In.(mm)	1/4 (6.35)
Gas (Low Pressure)		1/2 (12.7)
Maximum Total Refrigerant Pipe Length	Fl. (m)	100 (30)
Maximum Vertical Separation	Fl. (m)	100 (30)

Should this document be altered or changed without MESCA's permission, it becomes null and void. MESCA assumes no responsibility for any consequences in such cases.

FAN PERFORMANCE AND CORRECTED AIR FLOW - PEAD-A18AA7

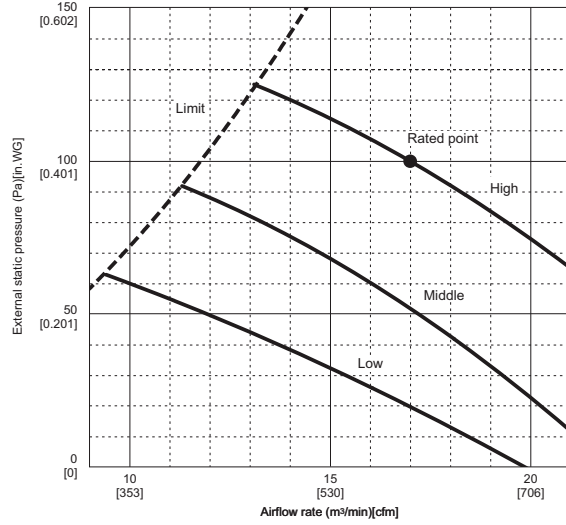
PEAD-A18AA7

(External static pressure 35Pa) 208-230V 60Hz



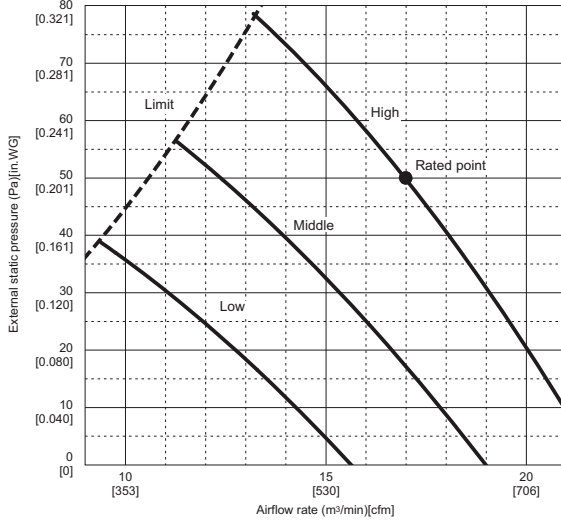
PEAD-A18AA7

(External static pressure 100Pa) 208-230V 60Hz



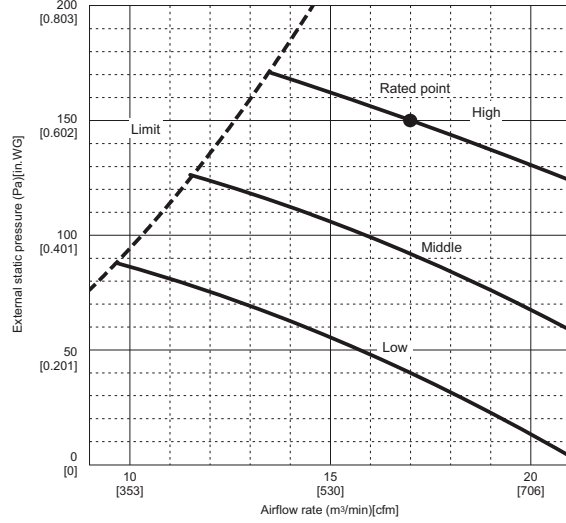
PEAD-A18AA7

(External static pressure 50Pa) 208-230V 60Hz



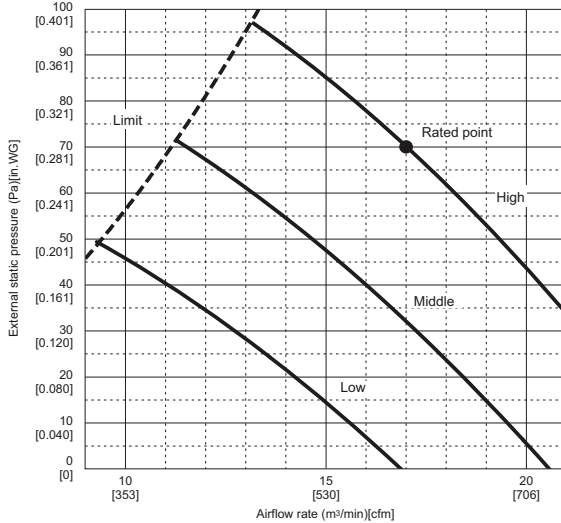
PEAD-A18AA7

(External static pressure 150Pa) 208-230V 60Hz



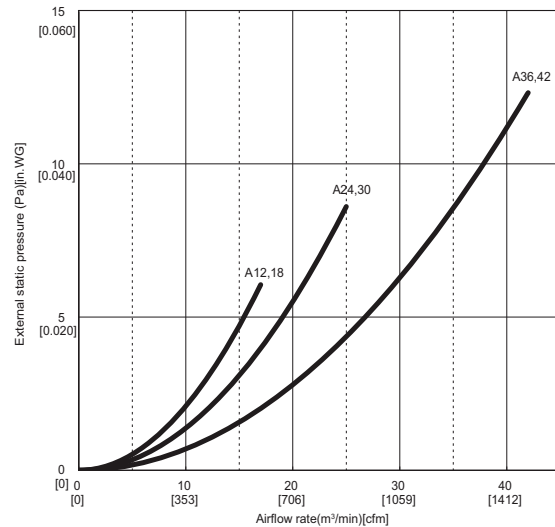
PEAD-A18AA7

(External static pressure 70Pa) 208-230V 60Hz



PEAD-A12,18,24,30,36,42AA7

Air filter 208-230V 60Hz



Specifications are subject to change without notice.

Should this document be altered or changed without MESCA's permission, it becomes null and void. MESCA assumes no responsibility for any consequences in such cases.

DIMENSIONS: PEAD-A18AA7

Unit: mm (in.)

[Maintenance access space]
Secure enough access space to allow for the maintenance, inspection, and replacement of the motor, fan, drain pump, heat exchanger, and control box in one of the following ways.
Select an installation site for the indoor unit so that its maintenance access space will not be obstructed by beams or other objects.

- (1) When a space of 300mm or more is available below the unit between the unit and the ceiling.
 - Create access door 1 and 2 (450x450mm each) as shown in Fig.2.
 - (Access door 2 is not required if enough space is available below the unit for a maintenance worker to work in.)
- (2) When a space of less than 300mm is available below the unit between the unit and the ceiling.
 - (At least 20mm of space should be left below the unit as shown in Fig.3.)
 - Create access door 1 diagonally below the control box and access door 3 below the unit as shown in Fig.4.
 - Create access door 4 below the control box and the unit as shown in Fig.5.

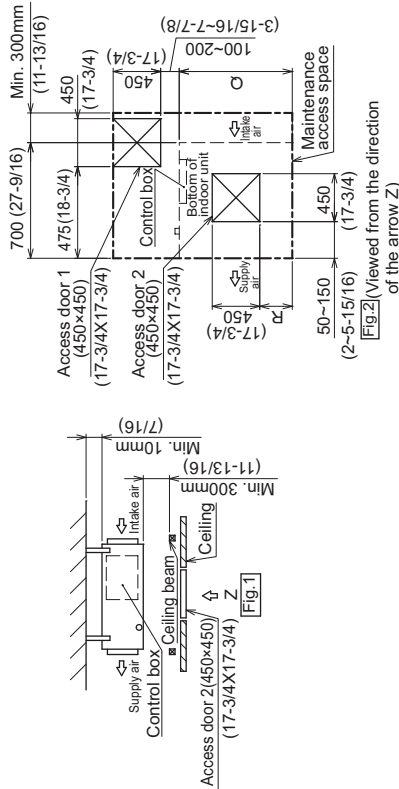
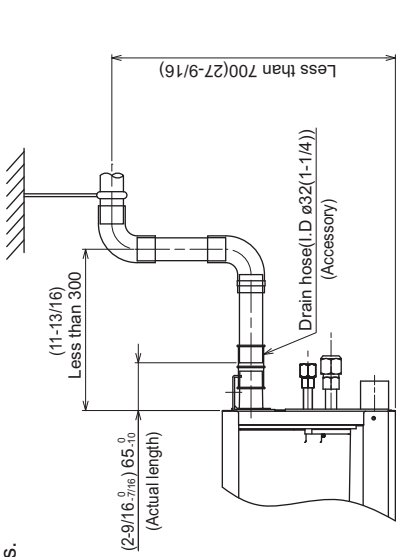


Fig.2 (Viewed from the direction of the arrow Z)

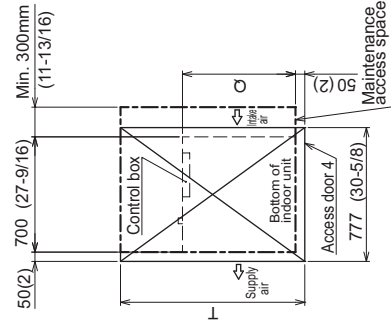


Fig.3 (Viewed from the direction of the arrow Y)

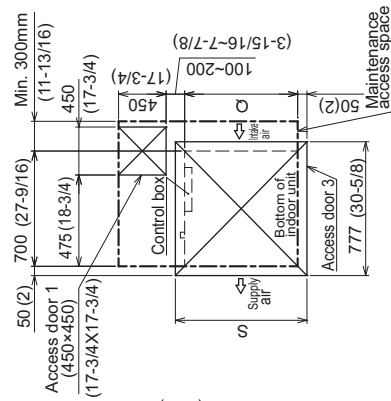


Fig.4 (Viewed from the direction of the arrow Y)

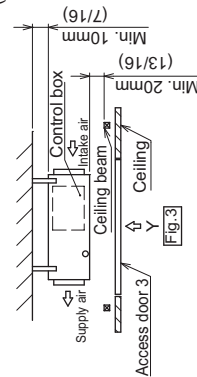
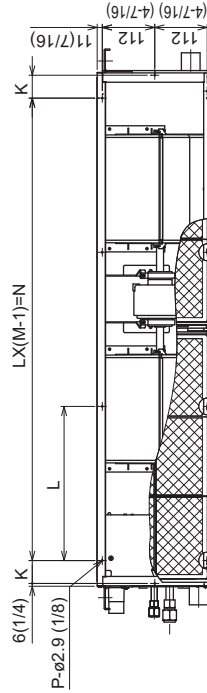
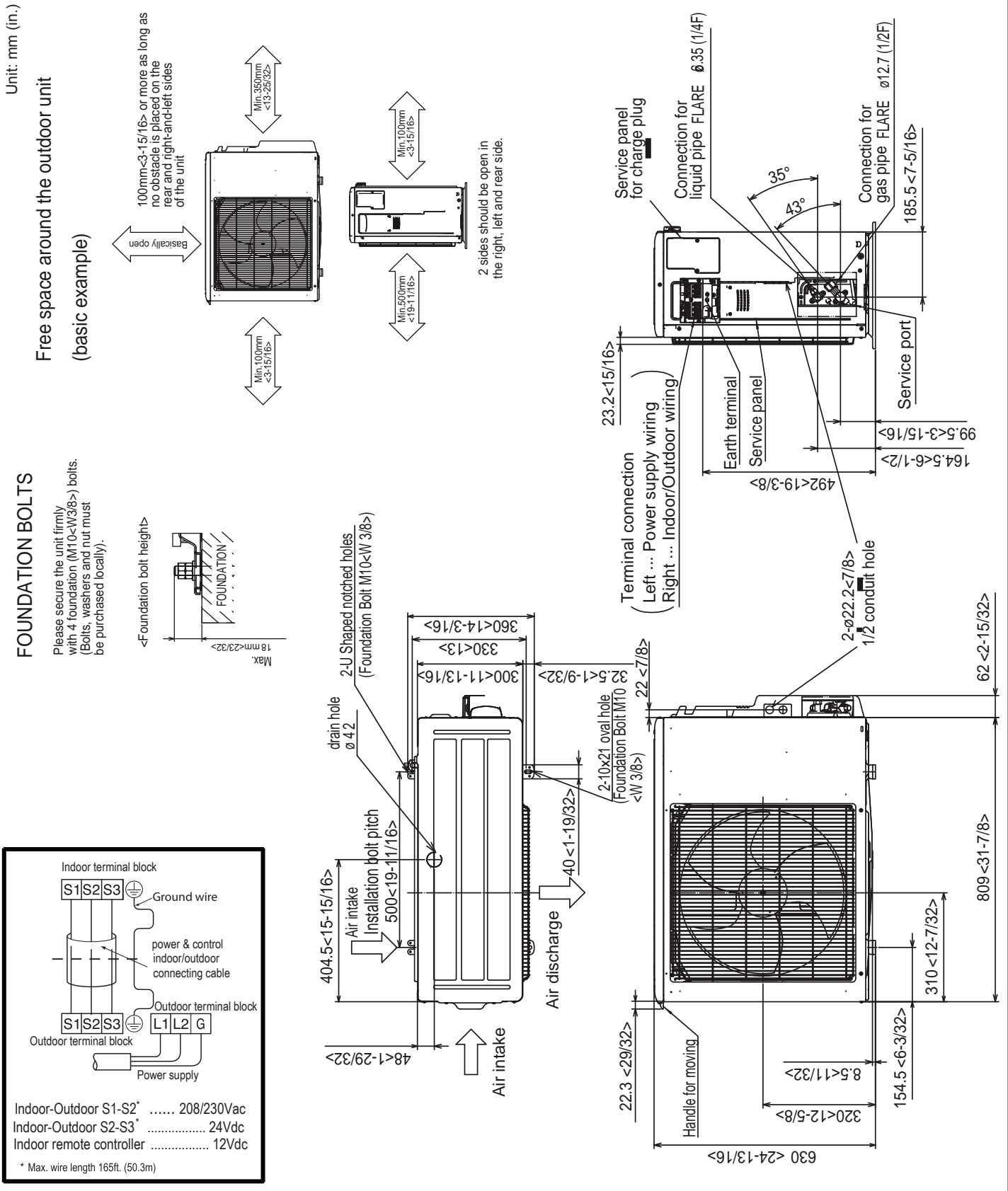


Fig.5



Model	K	L	M	N	P	Q	R	S	T
PEAD-A12.18AA7	54 (2-3/16)	260 (10-1/4)	4 (30-3/4)	780 (30-3/4)	10 (35-7/16)	900 (5-15/16)-9-7/8	150-250 (5-15/16)-9-7/8	1000 (39-3/8)	1500 (59-11/16)
PEAD-A24.30AA7	49 (1-15/16)	330 (13)	4 (39)	990 (43-3/16)	10 (43-3/16)	1100 (9-7/8)-13-13/16	250-350 (9-7/8)-13-13/16	1200 (47-1/4)	1700 (66-15/16)
PEAD-A36.48AA7	54 (2-3/16)	320 (12-5/8)	5 (60-7/16)	1280 (50-11/16)	12 (55-1/8)	1400 (55-1/8)	400-500 (15-3/4)-19-11/16	1500 (59-11/16)	2000 (78-3/4)

DIMENSIONS: PUZ-A18NKA7



Indoor terminal block

S1 S2 S3

Ground wire

power & control indoor/outdoor connecting cable

Outdoor terminal block

S1 S2 S3

L1 L2 G

Outdoor terminal block

Power supply

Indoor-Outdoor S1-S2* 208/230Vac
 Indoor-Outdoor S2-S3* 24Vdc
 Indoor remote controller 12Vdc

* Max. wire length 165ft. (50.3m)

Should this document be altered or changed without MESCA's permission, it becomes null and void. MESCA assumes no responsibility for any consequences in such cases.*



Specifications are subject to change without notice.
 www.MitsubishiElectric.ca
 © 2017 Mitsubishi Electric Sales Canada Inc.