

SUBMITTAL DATA: PEAD-A24AA7 & PUZ-HA24NHA

24,000 BTU/H HORIZONTAL-DUCTED HEAT-PUMP SYSTEM

Job Name:	Engineer:
Purchaser:	Application:
Submitted To:	For: <input type="checkbox"/> Reference <input type="checkbox"/> Approval <input type="checkbox"/> Construction
Submitted By:	Location:
System Designation:	Schedule No.:



Indoor Unit: PEAD-A24AA7



Outdoor Unit: PUZ-HA24NHA

ACCESSORIES:
Indoor Unit

- Filter Box (PAC-KE93TB-E)
- External Heating Adaptor (PAC-YU25HT)

Optional Controls

- Wireless Controller (MHK1)
- Advanced Wired Controller (PAR-40MAA)
- Simple Wired Controller (PAC-YT53CRAU)
- Wireless Remote Controller (PAR-FL32MA) + Wireless Signal Receiver (PAR-FA32MA)
- Thermostat Interface (PAC-US444CN)
- M-NET Adapter (PAC-SJ95MA-E)

Outdoor Unit

- Rear Snow Guard (PRE-24-30)
- Side Snow Guard (PSD-24-30)
- Front Wind Deflector (PFR-24-30)

Note: Mitsubishi Electric (MESCA) supports the use of only MESCA supplied and approved Snow Guard / Wind Deflectors / Windscreens and accessories for proper functioning of the unit(s). Use of non-MESCA supported Snow Guard / Wind Deflectors / Windscreens and accessories will affect warranty coverage.

SPECIFICATIONS:
Rated Conditions (Capacity / Input)*

Condition	Unit	Capacity / Input
Cooling	Btu/h / W	24,000 / 2,080
Heating at 47° F (Max.)	Btu/h / W	25,000 / 1,920
Heating at 17° F (Max.)	Btu/h / W	25,000 / 3,450

* Rating Conditions per AHRI Standard:
 Cooling | Indoor: 80° F (27° C)DB / 67° F (19° C)WB; Outdoor: 95° F (35° C)DB / 75° F (24° C)WB
 Heating at 47° F | Indoor: 70° F (21° C)DB / 60° F (16° C)WB; Outdoor: 47° F (8° C)DB / 43° F (6° C)WB
 Heating at 17° F | Indoor: 70° F (21° C)DB / 60° F (16° C)WB; Outdoor: 17° F (-8° C)DB / 15° F (-9° C)WB

Capacity Range

Cooling	Btu/h	10,000 - 24,000
Heating at 47° F	Btu/h	10,000 - 28,000

Operating Range

Cooling	0° F** to 115° F (-18° C to 46° C) DB
Heating	-13° F to 70° F (-25° C to 21° C) DB

** Windscreens required for cooling operation below 23° F (-5° C)

AHRI Efficiency Rating

EER	11.5
SEER	16.6
HSPF IV / V	11.0 / NA
COP at 47° F (Rated)	3.80
COP at 17° F (Max.)	2.12
COP at 5° F (Max.)	2.00

Electrical Power Requirements	208 / 230V, 1-Phase, 60 Hz
-------------------------------	----------------------------

Minimum Circuit Ampacity (MCA) *		ODU Breaker Size	MOCP (Outdoor)
Indoor 2.63 AMP	Outdoor 19 AMP	25 AMP	26 AMP

***All electrical work shall comply with National (CEC) and local codes and regulations.**

Indoor Unit

Blower Motor (ECM)	F.L.A.	2.10
Blower Motor Output	W	121
SHF / Moisture Removal		0.68 / 6.9 pt./h
External Static Pressure	In. WG	0.14-0.20-0.28-0.40-0.60
Drain Lift Mechanism (Included)	H: Ft.	27-9/16
		Drainpipe Size O.D [in. (mm)] - 1-1/4 (32)

Outdoor Unit

Compressor		SCROLL
Fan Motor (ECM)	F.L.A.	0.4
Fan Motor Output	W	86

Airflow Rate (Low-Mid-Hi)

Location	Condition	Unit	CFM
Indoor (Cooling)	DRY	CFM	512-635-741
	WET		472-595-701
Outdoor	DRY		1,940

Sound Pressure Level

Indoor (Low-Mid-Hi)		30-33-37
Outdoor	Cooling	52
	Heating	53

External Dimensions

Indoor (H x W x D)	In.(mm)	9-7/8 x 45-5/16 x 28-7/8 (250 x 1,100 x 732)
Outdoor (H x W x D)	In.(mm)	37-1/8 x 37-13/32 x 13 + 1-3/16 (943 x 950 x 330 + 30)

Net Weight

Indoor	Lbs.(kg)	69 (31)
Outdoor		188 (85)

External Finish

Indoor	Galvanized-steel Sheet
Outdoor	Ivory Munsell No. 3Y 7.8 / 1.1

Refrigerant	R410A ; 7lbs., 11oz. (3.5kg)
-------------	------------------------------

Refrigerant Piping (Flared)

Liquid (High Pressure)	In.(mm)	3/8 (9.52)
Gas (Low Pressure)		5/8 (15.88)
Maximum Total Refrigerant Pipe Length	Fl. (m)	165 (50)
Maximum Vertical Separation	Fl. (m)	100 (30)

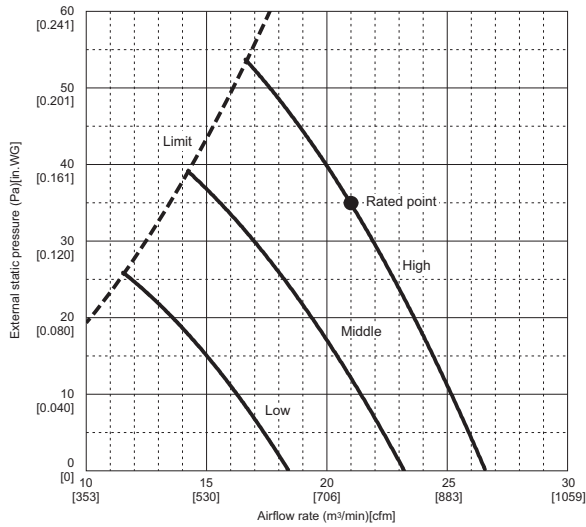
Specifications are subject to change without notice.

Should this document be altered or changed without MESCA's permission, it becomes null and void. MESCA assumes no responsibility for any consequences in such cases.

FAN PERFORMANCE AND CORRECTED AIR FLOW - PEAD-A24AA7

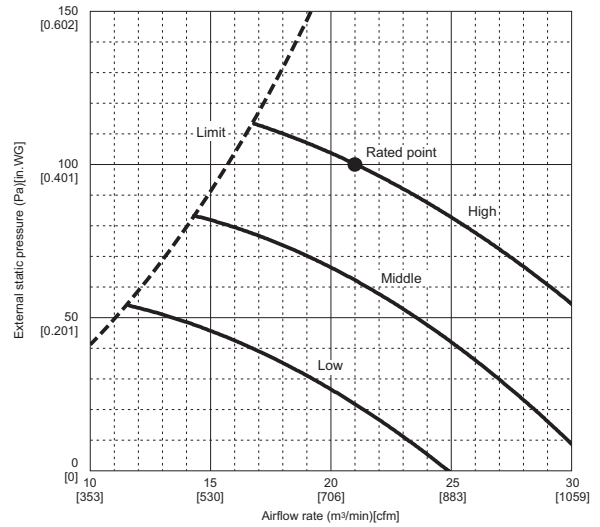
PEAD-A24AA7

(External static pressure 35Pa) 208-230V 60Hz



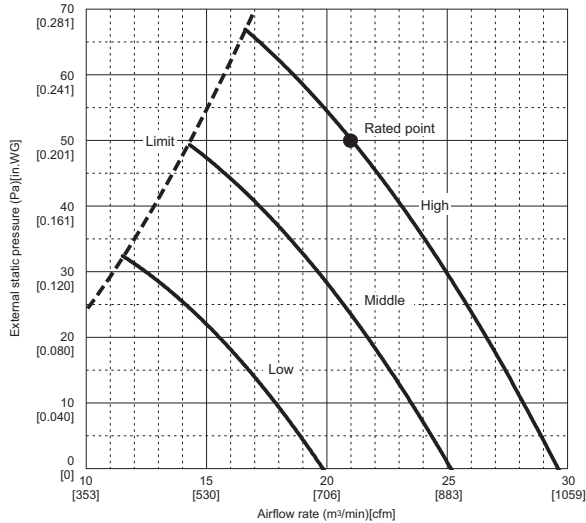
PEAD-A24AA7

(External static pressure 100Pa) 208-230V 60Hz



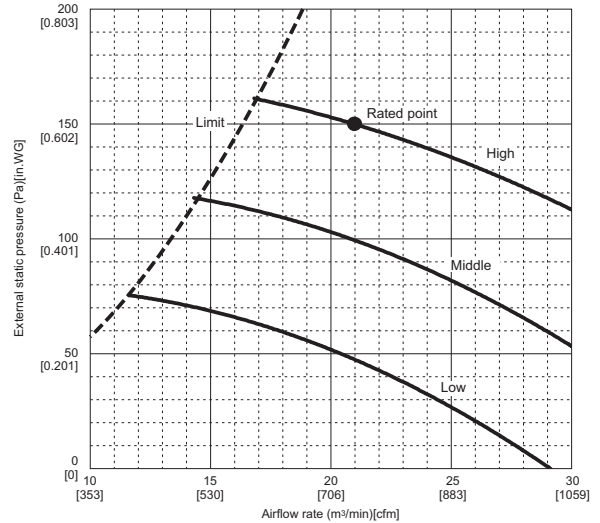
PEAD-A24AA7

(External static pressure 50Pa) 208-230V 60Hz



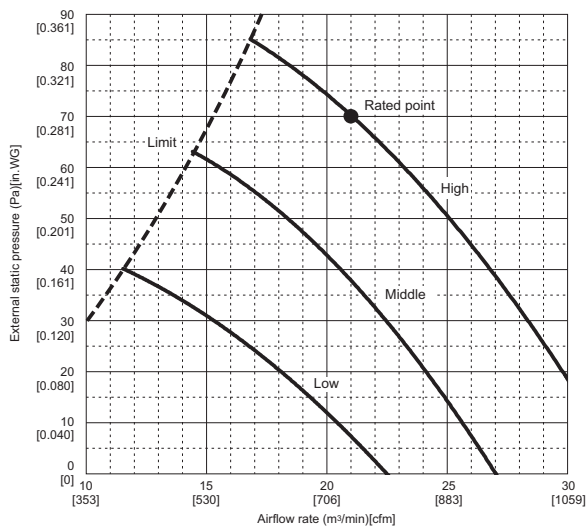
PEAD-A24AA7

(External static pressure 150Pa) 208-230V 60Hz



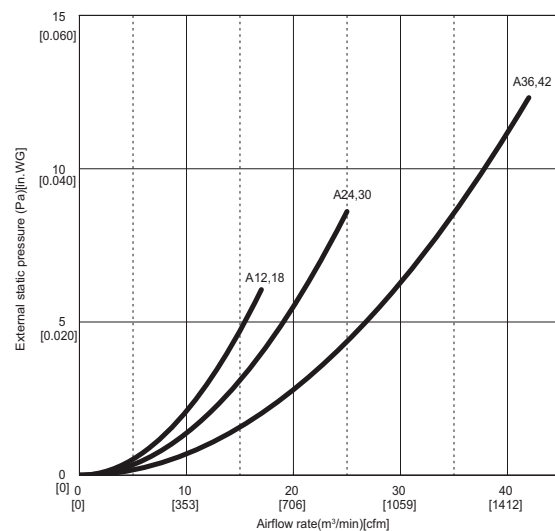
PEAD-A24AA7

(External static pressure 70Pa) 208-230V 60Hz



PEAD-A12,18,24,30,36,42AA7

Air filter 208-230V 60Hz



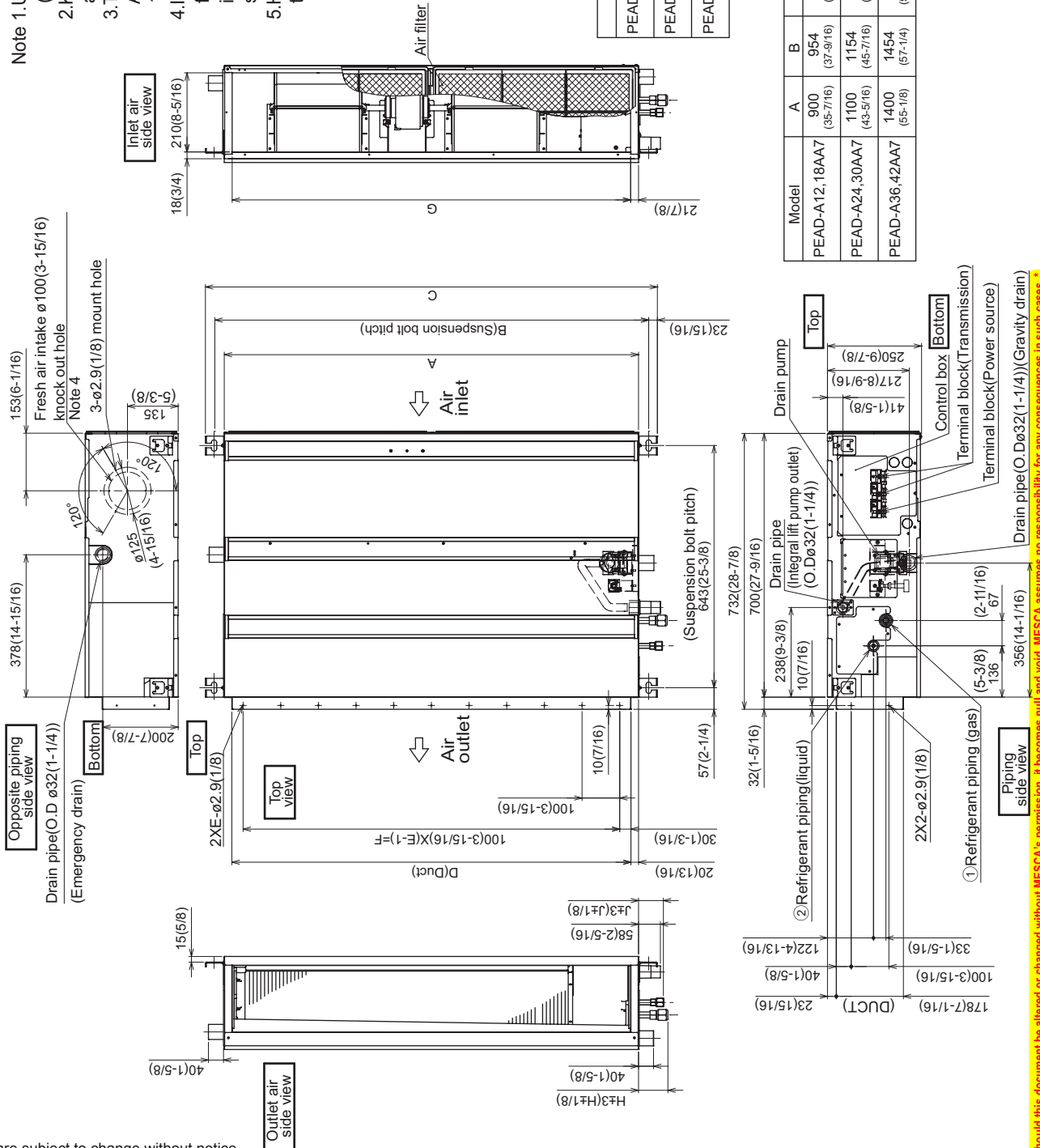
Specifications are subject to change without notice.

Should this document be altered or changed without MESCA's permission, it becomes null and void. MESCA assumes no responsibility for any consequences in such cases.

DIMENSIONS: PEAD-A24AA7

Unit: mm (in.)

- Note 1.** Use an M10 screw for the suspension bolt (field supply).
Note 2. Keep the service space for maintenance at the bottom.
Note 3. This drawing is for PEAD-A24-30-36-42 AA7 models, which have 2 fans. PEAD-A12-18AA7 models have 1 fan.
Note 4. If the inlet duct is used, remove the air filter (supplied with the unit), then install the filter (field supply) at the suction side.
Note 5. Heat air to 0°C (32°F) or higher when taking fresh air with a fresh air intake.



Model	J	① Gas pipe	② Liquid pipe
PEAD-A12,18AA7	62 (2-1/2)	ø12.7 (1/2)	ø6.35 (1/4)
PEAD-A24,30AA7	66 (2-5/8)	ø15.88 (5/8)	ø9.52 (3/8)
PEAD-A36,42AA7			

Model	A	B	C	D	E	F	G	H
PEAD-A12,18AA7	900 (35-7/16)	954 (37-9/16)	1000 (39-3/8)	860 (33-7/8)	9	800 (31-1/2)	858 (33-13/16)	72 (2-7/8)
PEAD-A24,30AA7	1100 (43-3/8)	1154 (45-7/16)	1200 (47-1/4)	1060 (41-3/4)	11	1000 (39-3/8)	1058 (41-11/16)	78 (3-1/8)
PEAD-A36,42AA7	1400 (55-1/8)	1454 (57-1/4)	1500 (59-1/16)	1360 (53-9/16)	14	1300 (51-3/16)	1358 (53-1/2)	

Specifications are subject to change without notice.

Should this document be altered or changed without MESCA's permission, it becomes null and void. MESCA assumes no responsibility for any consequences in such cases.

DIMENSIONS: PEAD-A24AA7

Unit: mm (in.)

[Maintenance access space]
Secure enough access space to allow for the maintenance, inspection, and replacement of the motor, fan, drain pump, heat exchanger, and control box in one of the following ways.
Select an installation site for the indoor unit so that its maintenance access space will not be obstructed by beams or other objects.

- (1) When a space of 300mm or more is available below the unit between the unit and the ceiling,
 - Create access door 1 and 2 (450x450mm each) as shown in Fig.2.
 - (Access door 2 is not required if enough space is available below the unit for a maintenance worker to work in.)
- (2) When a space of less than 300mm is available below the unit between the unit and the ceiling.
 - (At least 20mm of space should be left below the unit as shown in Fig.3.)
 - Create access door 1 diagonally below the control box and access door 3 below the unit as shown in Fig.4.
 - Create access door 4 below the control box and the unit as shown in Fig.5.

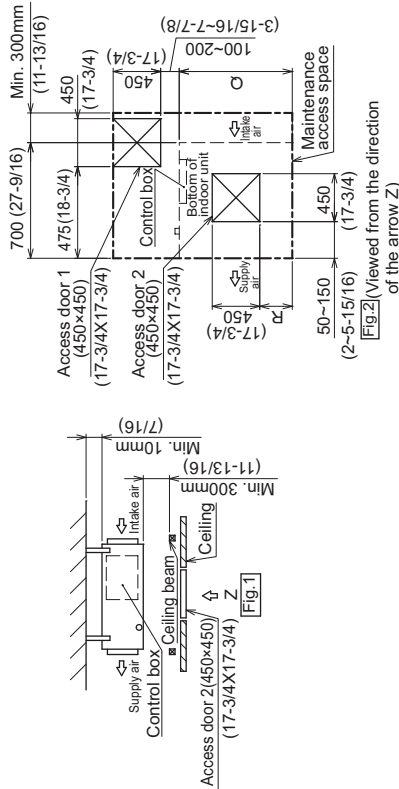
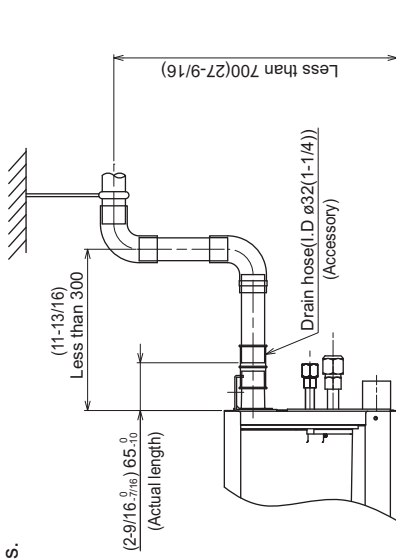


Fig.2 (Viewed from the direction of the arrow Z)

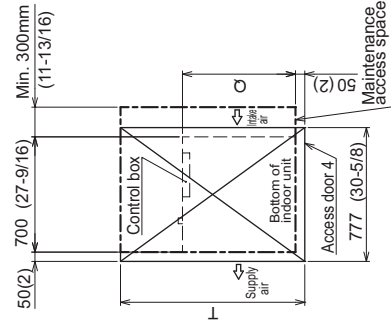


Fig.3 (Viewed from the direction of the arrow Y)

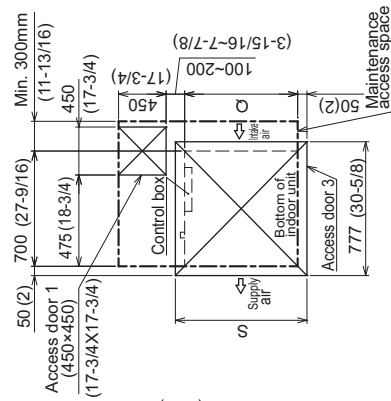


Fig.4 (Viewed from the direction of the arrow Y)

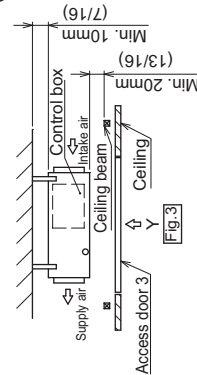
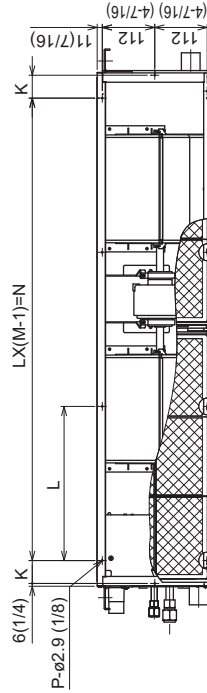


Fig.5



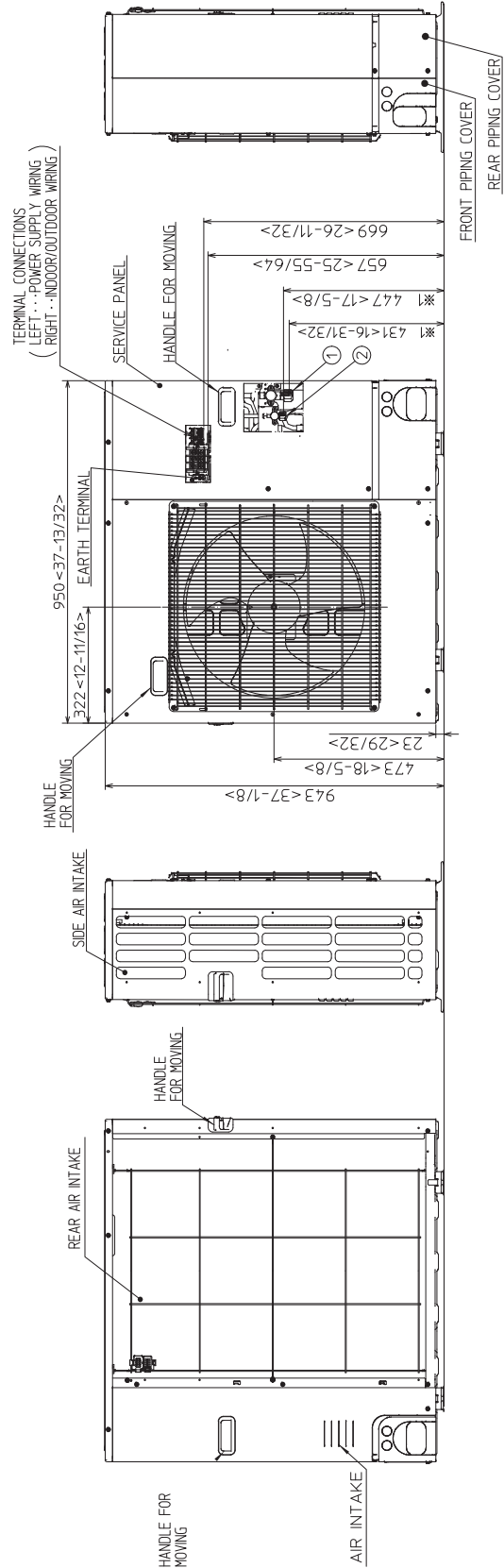
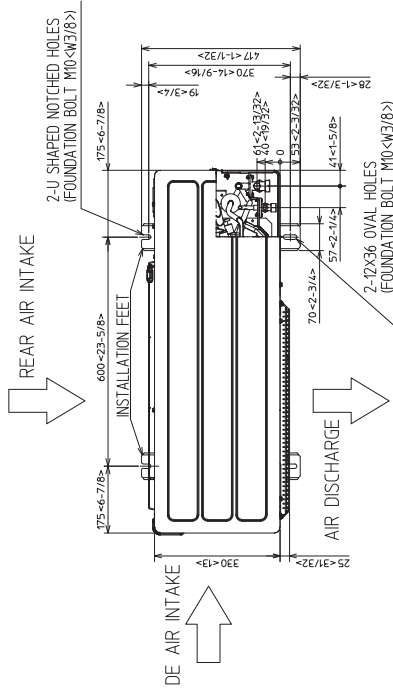
Model	K	L	M	N	P	Q	R	S	T
PEAD-A12.18AA7	54 (2-3/16)	260 (10-1/4)	4 (3/32)	780 (30-3/4)	10 (3/8)	900 (35-7/16)	150~250 (5-15/16)~(9-7/8)	1000 (39-3/8)	1500 (59-11/16)
PEAD-A24.30AA7	49 (1-15/16)	330 (13)	4 (3/16)	990 (39)	10 (3/8)	1100 (43-3/16)	250~350 (9-7/8)~(13-13/16)	1200 (47-1/4)	1700 (66-15/16)
PEAD-A36.48AA7	54 (2-3/16)	320 (12-5/8)	5 (5/16)	1280 (50-7/16)	12 (3/4)	1400 (55-1/8)	400~500 (15-3/4)~(19-11/16)	1500 (59-1/16)	2000 (78-3/4)

Unit:mm(in.)

Should this document be altered or changed without MESCA's permission, it becomes null and void. MESCA assumes no responsibility for any consequences in such cases.

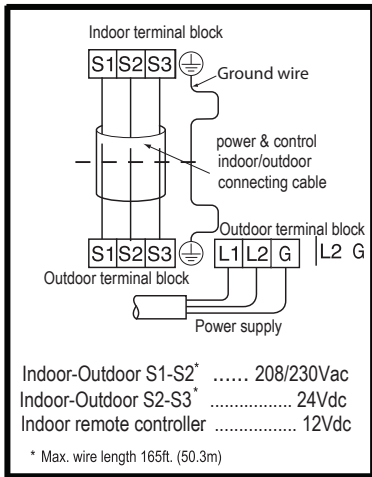
DIMENSIONS: PUZ-HA24NHA

Unit: mm (in.)



EXAMPLE OF NOTES

- ① ...REFRIGERANT GAS PIPE CONNECTION (FLARE)φ5.88 (5/8F)
- ② ...REFRIGERANT LIQUID PIPE CONNECTION (FLARE)φ 9.52 (3/8F)
- *1 ... INDICATION OF STOP VALVE CONNECTION LOCATION.



Should this document be altered or changed without MESCA's permission, it becomes null and void. MESCA assumes no responsibility for any consequences in such cases.

