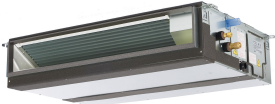


SUBMITTAL DATA: PEAD-A24AA7 & SUZ-KA24NAH2
24,000 BTU/H Horizontal-Ducted HEAT PUMP SYSTEM

Job Name:	Location:	Date:
Purchaser:	Engineer:	
Submitted to:	For <input type="checkbox"/> Reference <input type="checkbox"/> Approval <input type="checkbox"/> Construction	
System Designation:	Schedule No.:	



ACCESSORIES:

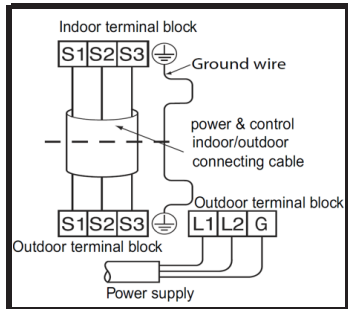
- Windscreens (ME-FR-24)
- External Fan/Heater Control Adapter (PAC-YU25HT-G)
- Cable connector of Remote Sensor (PAC-SA88HA-EP)*
- *Allows control of several units with multiple remote control display

Optional Controls

- Wireless Controller (MHK1)
- Wired Remote Controller (PAR-40MAA)
- Simple MA Remote Controller (PAC-YT53CRAU-J)
- Thermostat Interface (PAC-US444CN-1)
- System Control Interface (MAC-334IF-E)
- Wireless Remote (PAR-FL32MA-E) (Requires PAR-FA32MA-E)
- Remote Temperature Sensor (PAC-SE41TS-E)

Operating range	Indoor intake air temperature (SUZ-A18A/NAH2 TH)	Outdoor intake air temperature (SUZ-A24A0030NAH2 TH)
Cooling	Maximum D.B. 35°C (95°F) W.B. 21.7°C (71°F)	D.B. 46°C (115°F)
	Minimum D.B. 19.4°C (67°F) W.B. 13.9°C (57°F)	D.B. 10°C (50°F)
Heating	Maximum D.B. 24.5°C (76°F) W.B. 15.6°C (60°F)	D.B. 24°C (75°F)
	Minimum D.B. 21.1°C (70°F) W.B. 15.6°C (60°F)	D.B. 20°C (68°F)

NOTES: *1. Rating conditions (cooling)-Indoor: D.B. 26.7°C (80°F) W.B. 19.4°C (67°F) Outdoor: D.B. 8.3°C (47°F) W.B. 6.1°C (43°F)
 (heating)-Indoor: D.B. 21.1°C (70°F) W.B. 15.6°C (60°F) Outdoor: D.B. -8.3°C (17°F) W.B. -9.4°C (15°F)
 *2. Rating conditions (heating)-Indoor: D.B. 21.1°C (70°F) W.B. 15.6°C (60°F) Outdoor: D.B. -8.3°C (17°F) W.B. -9.4°C (15°F)



Specifications are subject to change without notice

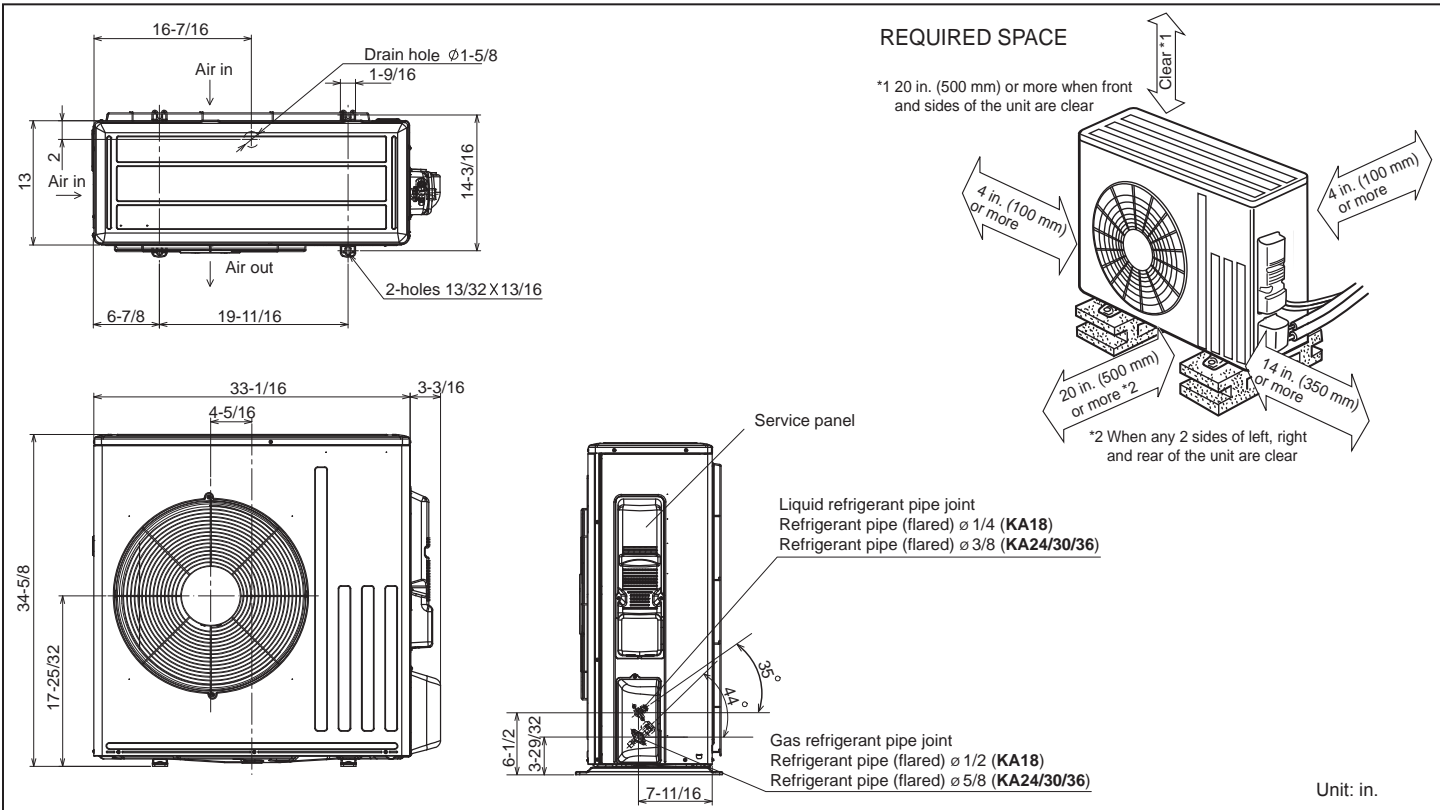
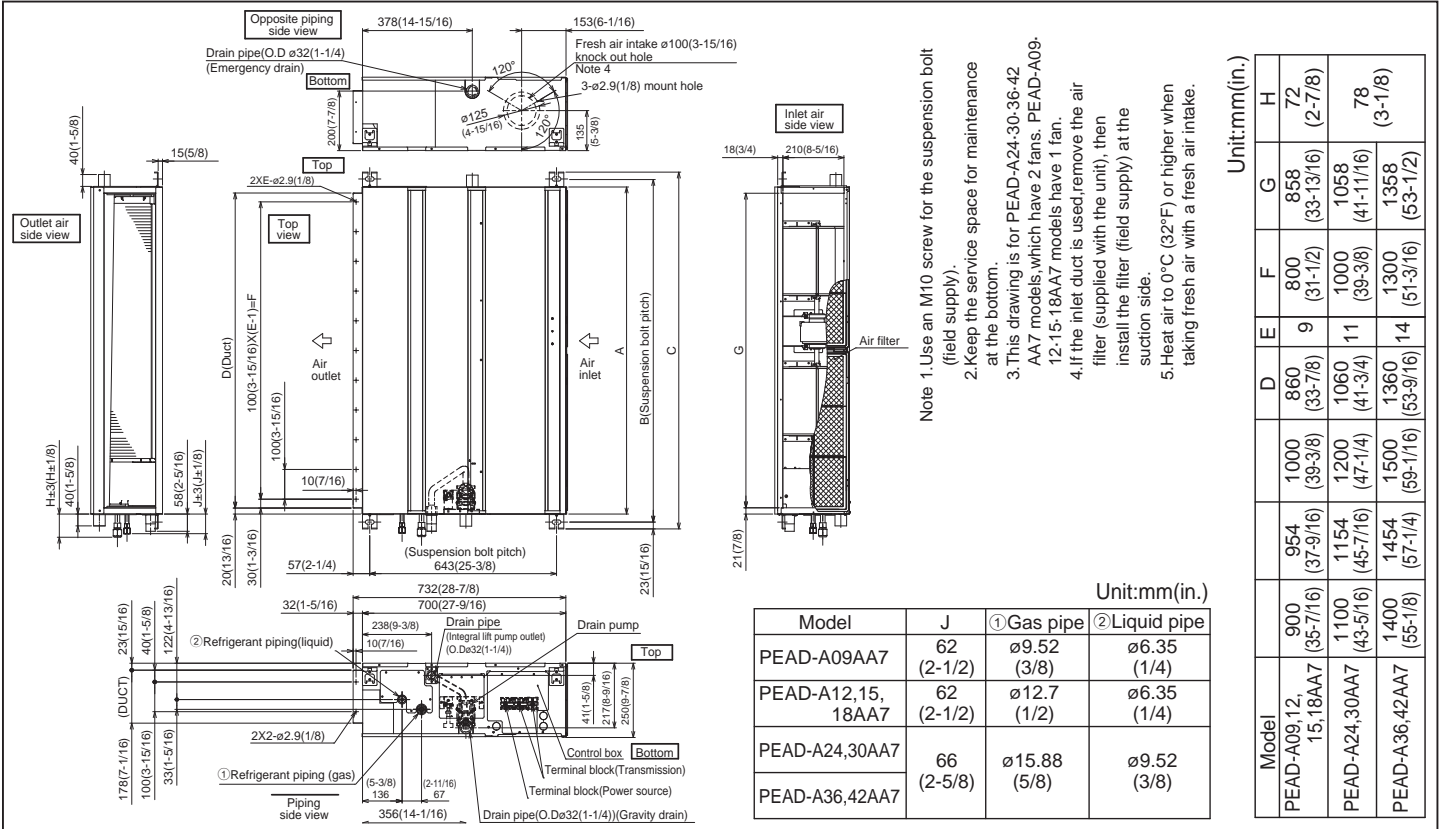
Cooling	Rated Capacity	Btu/h	24000	
	Capacity Range	Btu/h	12000-24000	
	Total input	W	1920	
		EER	12.5	
	Energy Efficiency	SEER	18	
	Moisture Removal	Pints/h	4.9	
	Sensible Heat Factor		0.77	
Heating at 47°F	Rated Capacity	Btu/h	25000	
	Capacity Range	Btu/h	14400-28000	
	Total input	W	1990	
	HSPF (Region IV)	Btu/h/W	11.2 (11.0)	
Heating at 17°F	Rated Capacity	Btu/h	15000	
	Rated Total input	W	1650 (1770)	
	Maximum Capacity	Btu/h	15000	
	Maximum Total Input	W	1650 (1770)	
Power supply	Voltage, Phase, Cycle		208/230V, 1-phase, 60Hz	
Voltage	Indoor - Outdoor S1-S2		AC 208/230V	
	Indoor - Outdoor S2-S3		DC12-24V	
	Indoor - Remote controller		DC12V	
Indoor unit	MCA (*)	A	2.63	
	Fan Motor	F.L.A.	2.1	
	Fan Motor Output	W	121	
		DRY (CFM)	512-635-741	
	Air flow (Lo-Mid-Hi)	WET (CFM)	461-572-667	
	External Static Pressure	in WG	0.14-0.20-0.28-0.40-0.60	
	Sound Pressure Level (Lo-Mid-Hi)	dB (A)	30-33-37	
	External Finish Color		Galvanized Sheets	
	Dimensions	W: in		43-5/16
		D: in		28-7/8
		H: in		9-7/8
	Weight Unit	lbs		69
	Field Drainpipe O.D.	in		O.D. 1-1/4
Refrigerant pipe Gas	in		5/8	
Refrigerant pipe Liquid	in		3/8	

Outdoor unit	MCA (*)	A	17	
	MOCP (*)	A	31	
	Fan Motor	F.L.A.	1	
	Compressor	Model (Type)	DC INVERTER-driven Twin Rotary	
		R.L.A.		13
		L.R.A.		16
	Air flow (Cooling/Heating)	CFM	(2,020/1,930)	
	Refrigerant Control		Linear Expansion Valve	
	Defrost Method		Reverse Cycle	
	SPL (Cooling)	dB (A)		55
	SPL (Heating)	dB (A)		55
	External Finish Color		Munsell No. 3Y 7.8/1.1	
	Dimension	W: in		33-1/16
D: in			13	
H: in			34-5/8	
Weight	lbs		129	
Remote Controller	Type	Wired Remote Controller		
Refrigerant	Type	R410A		
	Charge	lbs, oz	4.14	
	Oil	Type (Fl.oz.)	FV50S (15.6)	
Refrigerant Pipe	Gas side O.D.	in	5/8	
	Liquid side O.D.	in	3/8	
	Height Difference (Max)	ft	100	
	Length (Max.)	ft	100	
Connection Method	Indoor/Outdoor	Flared/Flared		
Operation Guarantee	Cooling	°F	14 - 115	
	Heating	°F	14 - 75	

Note: Mitsubishi Electric (MESCA) supports the use of only MESCA supplied and approved accessories for proper functioning of the unit(s). Use of non-MESCA supported accessories will affect warranty coverage.

Should this document be altered or changed without MESCA's permission, it becomes null and void. MESCA assumes no responsibility for any consequences in such cases. *All electrical work shall comply with National (CEC) and local codes and regulations.

DIMENSIONS: PEAD-A24AA7 & SUZ-KA24NAH2



Should this document be altered or changed without MESCA's permission, it becomes null and void. MESCA assumes no responsibility for any consequences in such cases.

