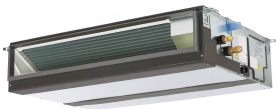


## SUBMITTAL DATA: PEAD-A30AA7

30,000 BTU/H HORIZONTAL-DUCTED INDOOR UNIT FOR MXZ MULTI-ZONE HEAT PUMP SYSTEM

Job Name:	Location:	Date:
Purchaser:	Engineer:	
Submitted to:	For <input type="checkbox"/> Reference <input type="checkbox"/> Approval <input type="checkbox"/> Construction	
System Designation:	Schedule No.:	


**SPECIFICATIONS:**

Rated Capacity*		
Cooling <sup>1</sup>	Btu/h / W	27,000
Heating at 47° F <sup>2</sup>	Btu/h / W	30,000

NOTES : <sup>1</sup>Rating conditions (cooling)-Indoor : D.B. 26.7°C (80°F), W.B. 19.4°C (67°F) Outdoor : D.B. 35°C (95°F), W.B. 23.9°C (75°F)  
 (heating)-Indoor : D.B. 21.1°C (70°F), W.B. 15.6°C (60°F) Outdoor : D.B. 8.3°C (47°F), W.B. 6.1°C (43°F)  
<sup>2</sup>Rating conditions(heating)-Indoor : D.B. 21.1°C (70°F), W.B. 15.6°C (60°F) Outdoor : D.B. -8.3°C (17°F), W.B. -9.4°C (15°F)

For data on specific indoor units (all ducted, all non-ducted, and both ducted and non-ducted) combinations, see the MXZ Technical and Service Manual.

Applications should be restricted to comfort cooling only; equipment cooling applications are not recommended for low ambient temperature conditions.

**ACCESSORIES:**

- External Fan/Heater Control Adapter (PAC-YU25HT-G)
- Cable connector of Remote Sensor (PAC-SA88HA-EP)\*
- \*Allows control of several units with multiple remote control display

**Optional Controls**

- Wireless Controller (MHK1)
- Wired Remote Controller (PAR-40MAA)
- Simple MA Remote Controller (PAC-YT53CRAU-J)
- Thermostat Interface (PAC-US444CN-1)
- System Control Interface (MAC-334IF-E)
- Wireless Remote (PAR-FL32MA-E) (Requires PAR-FA32A-E)
- Remote Temperature Sensor (PAC-SE41TS-E)

Electrical Power Requirements	208 / 230V, 1-Phase, 60 Hz	
-------------------------------	----------------------------	--

Minimum Circuit Ampacity (MCA) *	A	2.73
----------------------------------	---	------

Blower Motor (ECM)	F.L.A.	2.18
--------------------	--------	------

Blower Motor Output	W	121
---------------------	---	-----

Moisture Removal	pt/h	3.9
------------------	------	-----

Field Drainpipe Size O.D.	In.(mm)	1-1/4 (31.75)
---------------------------	---------	---------------

Airflow Rate (Lo - Med - Hi)		
DRY	CFM	618-742-883
WET		556-668-795

Sound Pressure Level (Lo - Med - Hi)		
Cooling	dB(A)	30-34-39

External Dimensions (H x W x D)	In.(mm)	9-7/8 x 43-5/16 x 28-7/8 (251 x 1100 x 733)
---------------------------------	---------	--

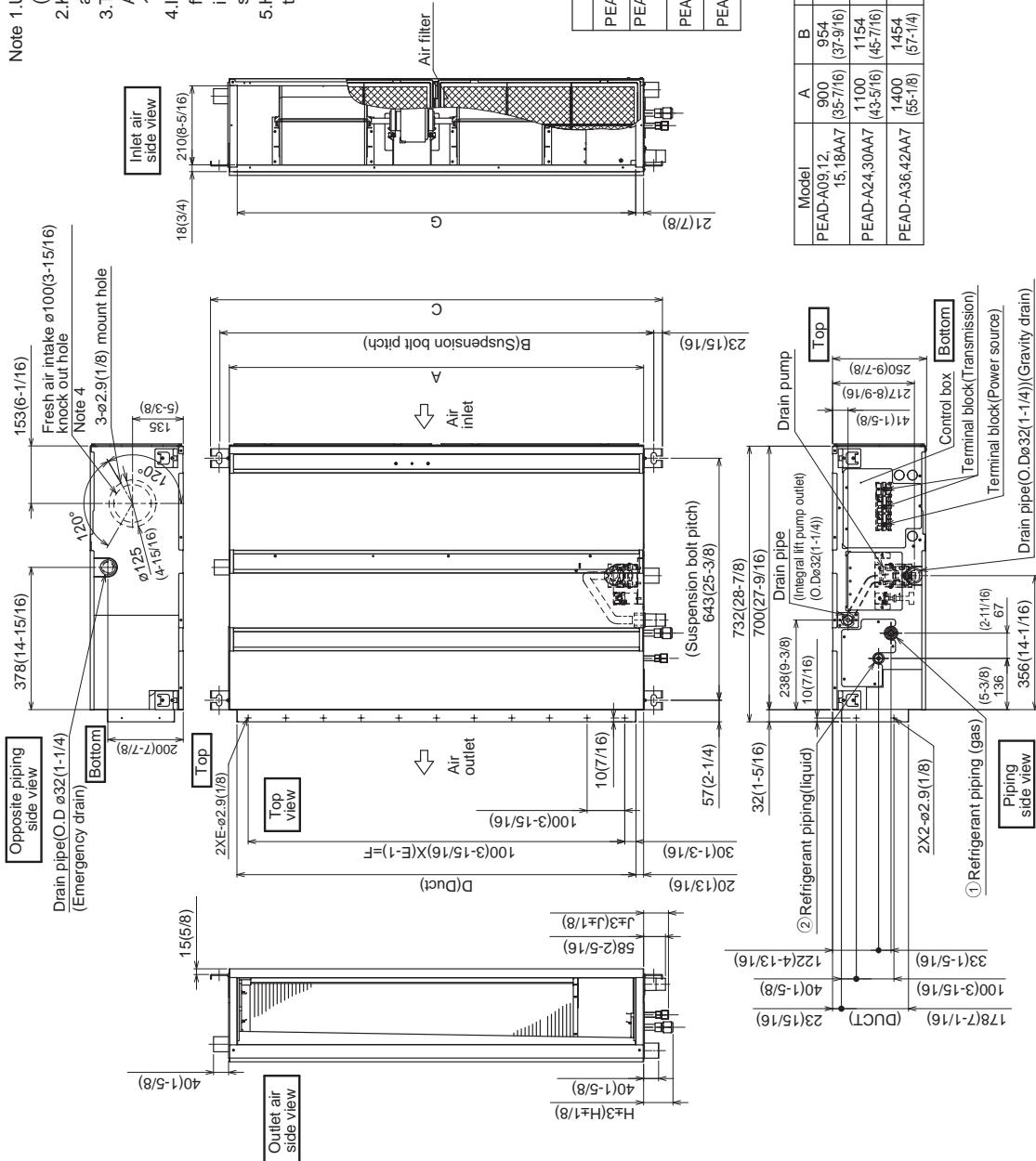
Net Weight	Lbs.(kg)	69 (32)
------------	----------	---------

External Finish	Galvanized-steel Sheets	
-----------------	-------------------------	--

Refrigerant Piping (Flared)		
Liquid (High Pressure)	In.(mm)	3/8 (9.52)
Gas (Low Pressure)		5/8 (15.88)

# DIMENSIONS: PEAD-A30AA7

- Note 1. Use an M10 screw for the suspension bolt (field supply).  
 2. Keep the service space for maintenance at the bottom.  
 3. This drawing is for PEAD-A24-30-36-42 AA7 models, which have 2 fans. PEAD-A09-12-15-18AA7 models have 1 fan.  
 4. If the inlet duct is used, remove the air filter (supplied with the unit), then install the filter (field supply) at the suction side.  
 5. Heat air to 0°C (32°F) or higher when taking fresh air with a fresh air intake.



Model	J	① Gas pipe	② Liquid pipe	Unit:mm(in.)
PEAD-A09AA7	62 (2-1/2)	ø9.52 (3/8)	ø6.35 (1/4)	
PEAD-A12,15,18AA7	62 (2-1/2)	ø12.7 (1/2)	ø6.35 (1/4)	
PEAD-A24,30AA7	66 (2-5/8)	ø15.88 (5/8)	ø9.52 (3/8)	
PEAD-A36,42AA7				

Model	A	B	C	D	E	F	G	H	Unit:mm(in.)
PEAD-A09,12,15,18AA7	900 (35-7/16)	954 (37-9/16)	1000 (39-3/8)	860 (33-7/8)	9	800 (31-1/2)	858 (33-13/16)	72 (2-7/8)	
PEAD-A24,30AA7	1100 (43-5/16)	1154 (45-7/16)	1200 (47-1/4)	1060 (41-3/4)	11	1000 (39-3/8)	1058 (41-11/16)	78 (3-1/8)	
PEAD-A36,42AA7	1400 (55-1/8)	1454 (57-1/4)	1500 (59-1/16)	1360 (53-9/16)	14	1300 (51-3/16)	1358 (53-1/2)		

Should this document be altered or changed without MESCA's permission, it becomes null and void. MESCA assumes no responsibility for any consequences in such cases.



Form # SB\_PEAD-A30AA7\_For\_MXZ\_SYS\_201912  
 Specifications are subject to change without notice.  
 www.MitsubishiElectric.ca  
 © 2019 Mitsubishi Electric Sales Canada Inc.