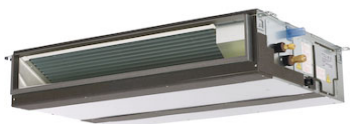


Submittal Data: PEAD-A36AA7 & PUZ-HA36NKA

36,000 BTU/H Horizontal-Ducted AHU Cold Climate Heat Pump System

| | | | |
|---------------|---------------|--------------|---------------|
| Job Name: | Location: | | |
| Purchaser: | Submitted By: | | |
| Submitted To: | Reference: | Approval: | Construction: |
| Engineer: | Date: | Application: | |



Optional Controller

Images provided for reference purposes only

| Outdoor Standard Features: | Description: |
|-----------------------------|--|
| Blue Fin Coating | Prolong condenser operating life |
| Inverter Motor | Energy efficient operation with variable speed DC motor |
| Built in base pan heater | Automated control to prevent premature failure of condenser coil |
| Auto mode | Automatically switches between heating & cooling modes |
| Fast Auto restart | Automatically restarts after power failure return |
| Auxiliary heat lock out | Prevents premature activation of aux. heat |
| Automated compressor cutout | Prevents inefficient operation & protects compressor |
| Cold climate heat pump | |
| | |

| Indoor Standard Features: | Description: |
|---|--------------|
| Unobtrusive ceiling-concealed design for short-run ductwork | |
| Wide ranging external static pressure (0.14-0.60 in. WG) | |
| Built-in condensate lift mechanism (up to 27-9/16") | |
| Auto fan speed mode | |
| Wired or wireless controllers | |
| | |
| | |

| Description: (Optional Accessories) | Model No. |
|-------------------------------------|-------------------------------|
| Front Windscreen | CM-S-FR-NKMU (x2 required) |
| Front Windscreen Blocker | CM-S-BLK-NKMU (x2 per box) |
| Rear Snow Guard | SG-1-RE |
| Side Snow Guard | SG-1-SD |
| | |
| Filter Box | PAC-KE94TB-E |
| Filter Box with MERV 13 Filter | FBM2-4-A |
| | |
| Distribution Pipe used for Twinning | MSDD-50TR-E (refer to manual) |

Note:

- Mitsubishi Electric Sales Canada Inc. (MESCA) supports the use of only MESCA supplied and approved components and accessories for proper functioning of the unit(s). Use of non - MESCA supported components and accessories will affect warranty coverage. MESCA recommends (A) consideration of all applicable design and application parameters and requirements specific to any project.
- Should any person change this document in any manner whatsoever without MESCA's written permission, the document shall be of no force and effect and any change shall be deemed to be a representation and warranty made by that person and not MESCA. That person, and not MESCA, shall assume full responsibility for the consequences of such changes. MESCA assumes no responsibility for any consequences in such cases.

Submittal Data: PEAD-A36AA7 & PUZ-HA36NKA

Performance:

| | | | |
|-------------------------------|----------------------|---------|-----------------|
| Cooling at 95°F ¹ | Rated Capacity | Btu/h | 36,000 |
| | Capacity Range | Btu/h | 15,600 - 36,000 |
| | Rated Power Input | W | 2,850 |
| | Power Input Range | W | 1,120 - 2,850 |
| | Moisture Removal | pints/h | 5.2 |
| | Sensible Heat Factor | | 0.84 |
| Heating at 47°F ² | Rated Capacity | Btu/h | 38,000 |
| | Capacity Range | Btu/h | 17,400 - 40,000 |
| | Rated Power Input | W | 2,940 |
| | Power Input Range | W | 1,050 - 3,260 |
| Heating at 17°F ³ | Maximum Capacity | Btu/h | 38,000 |
| | Rated Capacity | Btu/h | 25,400 |
| | Capacity Range | Btu/h | NA - 38,000 |
| | Maximum Power Input | W | 4,985 |
| | Rated Power Input | W | 2,955 |
| | Power Input Range | W | NA - 4,985 |
| Heating at 5°F ⁴ | Maximum Capacity | Btu/h | 38,000 |
| | Maximum Power Input | W | 5,685 |
| Heating at -13°F ⁵ | Maximum Capacity | Btu/h | 30,400 |
| | Maximum Power Input | W | 5,807 |

Efficiency:

| | | |
|--------------------------|------------------|------|
| SEER | | 17.1 |
| EER ¹ | | 12.6 |
| HSPF (IV) | | 10.4 |
| COP at 47°F ² | Rated Capacity | 3.79 |
| COP at 17°F ³ | Maximum Capacity | 2.23 |
| COP at 5°F ⁴ | Maximum Capacity | 1.97 |

Electrical:

| | | |
|--|------|---------------------|
| Power Supply | | 208/230V, 1Ph, 60Hz |
| Voltage: Indoor - Outdoor, S1-S2 | V AC | AC 208/230V |
| Voltage: Indoor - Outdoor, S2-S3 | V DC | DC 24V |
| Short-circuit Current Rating (SCCR) | kA | 5 |
| Recommended Fuse/Breaker Size (Outdoor) | A | 35 |
| Recommended Wire Size (Indoor - Outdoor) | AWG | 14 |

Outdoor Operating Temperature Range:

| | | |
|--|---------|------------------------|
| Cooling Operation Air Temp (Maximum / Minimum)* | °F (°C) | * 0 to 115 (-18 to 46) |
| Cooling Operation Thermal Lock-out / Re-start Temperatures | °F (°C) | -1 / 3 (-18 / -16) |
| Heating Operation Air Temp (Maximum / Minimum) | °F (°C) | -13 to 75 (-25 to 24) |
| Heating Operation Thermal Lock-out / Re-start Temperatures | °F (°C) | -22 / -13 (-30 / -25) |

AHRI Rated Conditions (Rated data is determined at a fixed compressor speed) (* Windscreens required for cooling operations below 23°F (-5°C))

¹Cooling (Indoor // Outdoor) 80°F (26.6°C) DB, 67°F (19.4°C) WB // 95°F (35°C) DB, 75°F (23.9°C) WB

²Heating at 47°F (8.3°C) (Indoor // Outdoor) 70°F (21.1°C) DB, 60°F (15.6°C) WB // 47°F (8.3°C) DB, 43°F (6.1°C) WB

³Heating at 17°F (-8.3°C) (Indoor // Outdoor) 70°F (21.1°C) DB, 60°F (15.6°C) WB // 17°F (-8.3°C) DB, 15°F (-9.4°C) WB

Rated conditions:

⁴Heating at 5°F (-15°C) (Indoor // Outdoor) 70°F (21.1°C) DB, 60°F (15.6°C) WB // 5°F (-15°C) DB, 4°F (-15.6°C) WB

⁵Heating at -13°F (-25°C) (Indoor // Outdoor) 70°F (21.1°C) DB, 60°F (15.6°C) WB // -13°F (-25°C) DB, -15°F (-26.1°C) WB

Notes:

Indoor Unit Specifications:

| | | |
|---------------------------------|-------------|----------------------------------|
| MCA | A | 3.30 |
| Blower Motor Full Load Amperage | A | 2.64 |
| Blower Motor Output | W | 244 |
| External Static Pressure | in WG | 0.14 - 0.20 - 0.28 - 0.40 - 0.60 |
| Airflow Rate at Cooling, Dry | CFM | 847 - 1,024 - 1,201 |
| Airflow Rate at Cooling, Wet | CFM | 807 - 984 - 1,161 |
| Airflow Rate at Heating, Dry | CFM | 847 - 1,024 - 1,201 |
| Sound Pressure Level (Cooling) | dB(A) | 33 - 38 - 42 |
| Sound Pressure Level (Heating) | dB(A) | 33 - 38 - 42 |
| Drain Pipe Size | In. (mm) | 1-1/4 (32) |
| External Finish Color | | Galvanized |
| Unit Dimensions | W: In. (mm) | 55-1/8 (1,400) |
| | D: In. (mm) | 28-7/8 (732) |
| | H: In. (mm) | 9-7/8 (250) |
| Unit Weight | Lbs. (kg) | 86 (39) |

Outdoor Unit Specifications:

| | | |
|--------------------------------|-------------|-----------------------------|
| MCA | A | 26 |
| MOCP | A | 42 |
| Fan Motor Output | W | 74 + 74 |
| Airflow Rate (Cooling/Heating) | CFM | 3,880 / 3,880 |
| Sound Pressure Level, Cooling1 | dB(A) | 52 |
| Sound Pressure Level, Heating2 | dB(A) | 53 |
| Refrigerant Control | | LEV |
| Compressor Oil Type / Charge | oz. | FV50S / 47 oz |
| External Finish Color | | Ivory Munsell No.3Y 7.8/1.1 |
| Unit Weight | Lbs. (kg) | 261 (118) |
| Unit Dimensions | W: In. (mm) | 41-11/32 (1,050) |
| | D: In. (mm) | 12-63/64 + 63/64 (330 +25) |
| | H: In. (mm) | 52-43/64 (1,338) |
| Gas Pipe Size O.D. (Flared) | In. (mm) | 5/8 (15.88) |
| Liquid Pipe Size O.D. (Flared) | In. (mm) | 3/8 (9.52) |
| Maximum Piping Length | Ft. (m) | 245 (75) |
| Maximum Height Difference | Ft. (m) | 100 (30) |

Description: (Optional Controls)

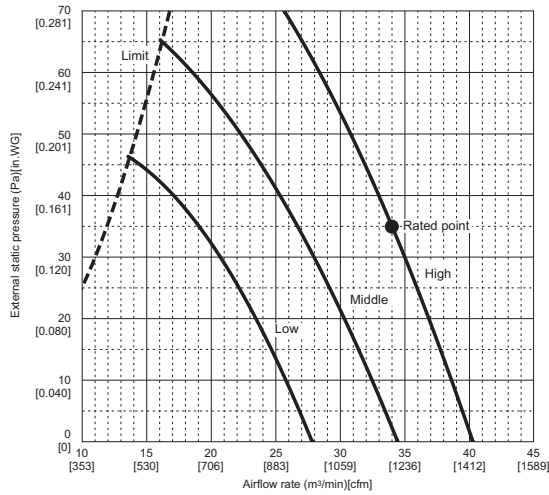
Model No.

| | |
|--|-------------------|
| Building automated system DDC Interface | MELCO-RETAIL-MINI |
| Building automated system BacNet Interface | MELCO-BEMS-MINI |
| MNet adapter (BacNet/LonWorks BAS sub interface) | PAC-SJ95MA-E |
| Simple thermostat Interface | PAC-US444CN-1 |
| Operation/error display adapter | PAC-SA88HA-EP |
| Remote ON/OFF control | PAC-SE55RA-E |
| Remote compressor ON/OFF control | PAC-SC36NA-E |
| Wireless Signal Receiver | PAR-SA9CA-E |
| Wireless remote receiver | PAR-FA32MA-E |
| Wireless MA Remote Controller | PAR-FL32MA-E |
| Wired wall mounted remote control | PAR-40MAAU |
| Wireless wall mounted remote control | MHK1 |
| Touch screen wired wall mounted control | PAR-CT01MAU-SB |
| Basic wired wall mounted control | PAC-YT53CRAU-J |
| External heat control adapter | PAC-YU25HT-G |
| Heater control relay | PAM-4 |
| Deluxe thermostat interface | RMF-CA100-V1 |
| | |
| | |

Fan Performance and Corrected Airflow:

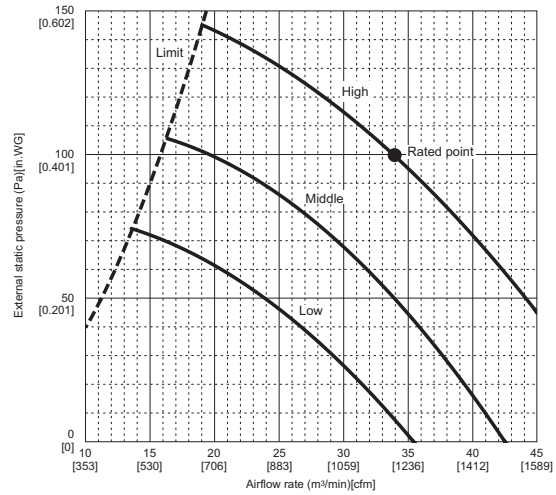
PEAD-A36AA7

(External static pressure 35Pa) 208-230V 60Hz



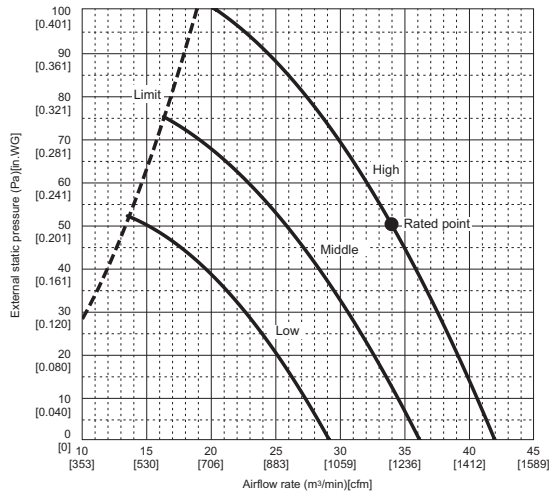
PEAD-A36AA7

(External static pressure 100Pa) 208-230V 60Hz



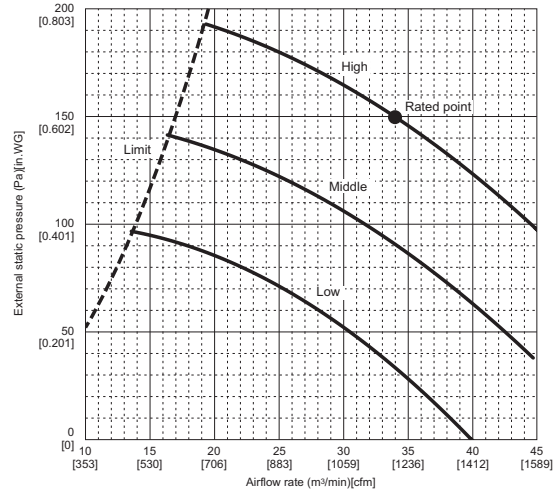
PEAD-A36AA7

(External static pressure 50Pa) 208-230V 60Hz



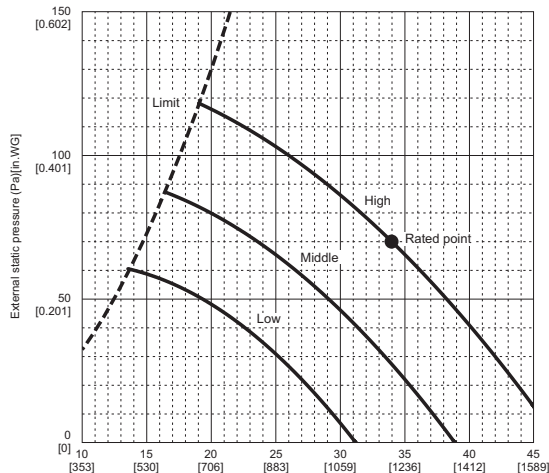
PEAD-A36AA7

(External static pressure 150Pa) 208-230V 60Hz



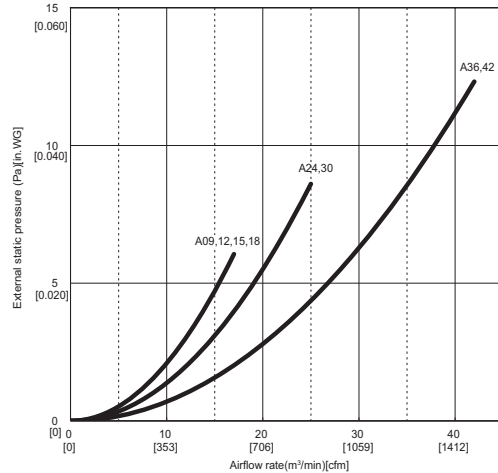
PEAD-A36AA7

(External static pressure 70Pa) 208-230V 60Hz



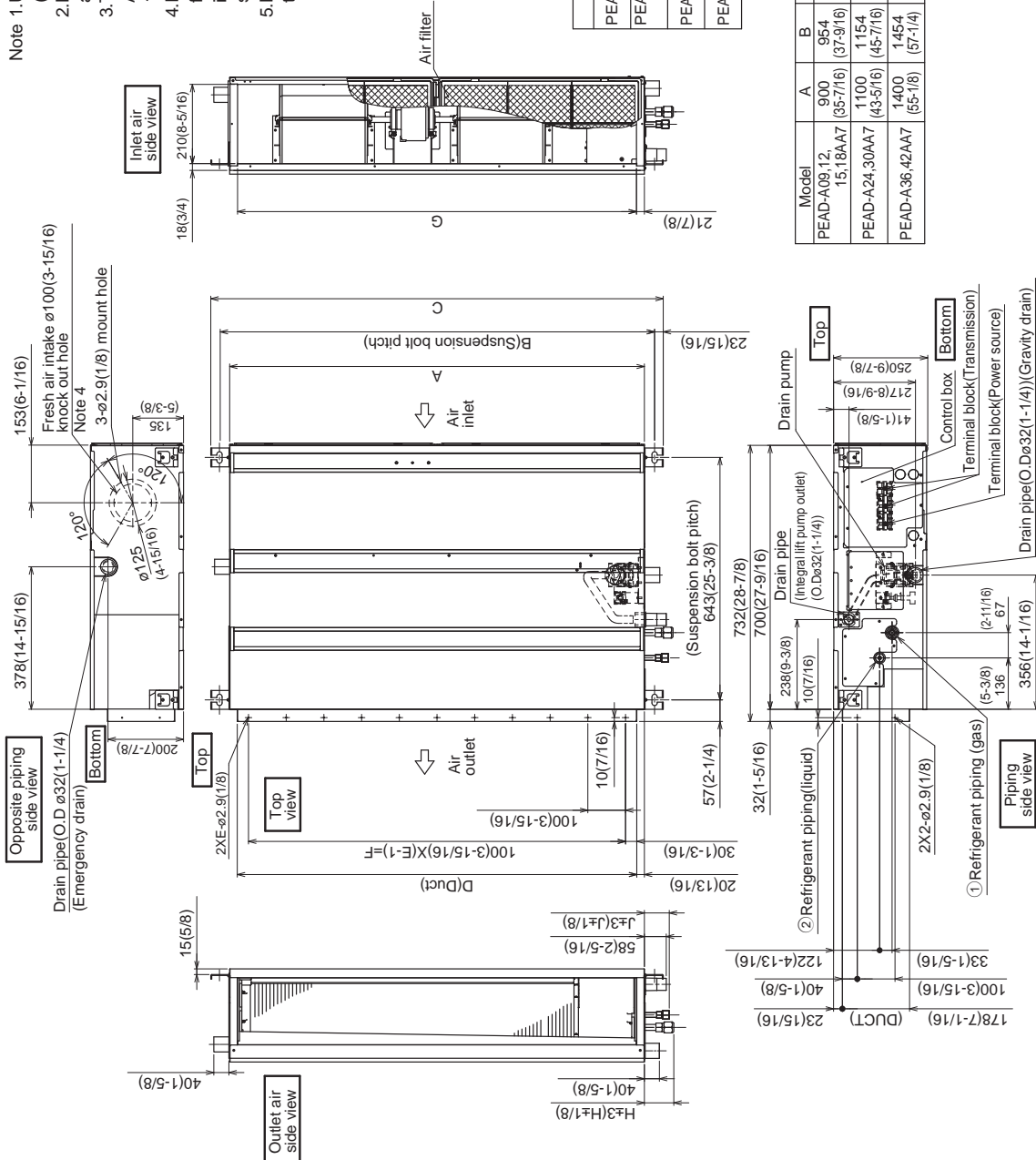
PEAD-A09,12,15,18,24,30,36,42AA7

Air filter 208-230V 60Hz



Indoor Unit Outline and Dimensions:

- Note 1. Use an M10 screw for the suspension bolt (field supply).
 2. Keep the service space for maintenance at the bottom.
 3. This drawing is for PEAD-A24-30-36-42 AA7 models, which have 2 fans. PEAD-A09-12-15-18AA7 models have 1 fan.
 4. If the inlet duct is used, remove the air filter (supplied with the unit), then install the filter (field supply) at the suction side.
 5. Heat air to 0°C (32°F) or higher when taking fresh air with a fresh air intake.

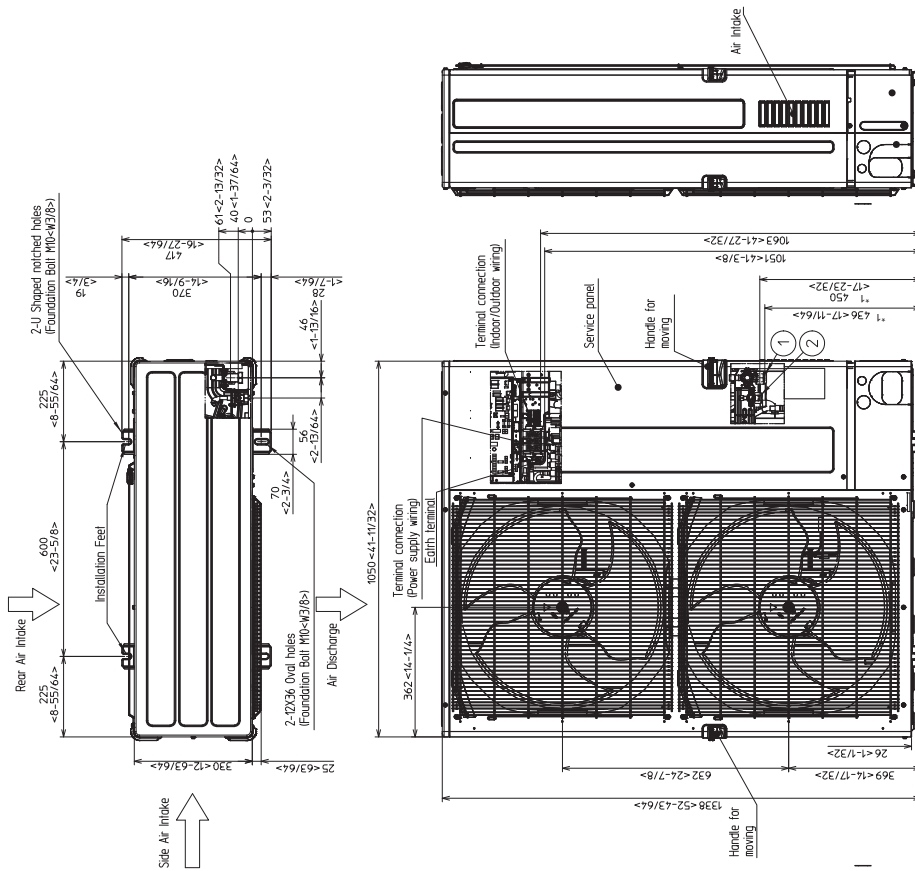


| Model | J | ① Gas pipe | ② Liquid pipe |
|-------------------|------------|--------------|---------------|
| PEAD-A09AA7 | 62 (2-1/2) | ø9.52 (3/8) | ø6.35 (1/4) |
| PEAD-A12-15-18AA7 | 62 (2-1/2) | ø12.7 (1/2) | ø6.35 (1/4) |
| PEAD-A24-30AA7 | 66 (2-5/8) | ø15.88 (5/8) | ø9.52 (3/8) |
| PEAD-A36-42AA7 | | | |

| Model | A | B | C | D | E | F | G | H |
|----------------------|----------------|----------------|----------------|----------------|----------------|-----------------|-----------------|------------|
| PEAD-A09-12-15-18AA7 | 900 (35-3/8) | 954 (37-9/16) | 1000 (39-3/8) | 860 (33-7/8) | 800 (31-1/2) | 858 (33-13/16) | 858 (33-13/16) | 72 (2-7/8) |
| PEAD-A24-30AA7 | 1100 (43-5/16) | 1154 (45-7/16) | 1200 (47-1/4) | 1060 (41-3/4) | 1000 (39-3/8) | 1058 (41-11/16) | 1058 (41-11/16) | 78 (3-1/8) |
| PEAD-A36-42AA7 | 1400 (55-1/8) | 1454 (57-1/4) | 1500 (59-1/16) | 1360 (53-9/16) | 1300 (51-3/16) | 1358 (53-9/16) | 1358 (53-9/16) | |

Outdoor Unit Outline and Dimensions:

Unit: mm<in>



Example of Notes

- ① . . . Refrigerant GAS pipe connection (FLARE)φ15.88(5/8F),
 - ② . . . Refrigerant LIQUID pipe connection (FLARE)φ9.52(3/8F).
- *1 . . . Indication of VALVE connection location.

