

Job Name:

Schedule Reference:

Date:



GENERAL FEATURES

- Dual set point functionality (*1)
- Multiple fan speed settings
- Auto fan mode
- Built-in condensate lift; lifts to 21-11/16" (550 mm)
- 7-7/8" (200 mm) high for low ceiling heights
- IT Terminal Plug

OPTIONS

- External Heater Adapter..... PAC-YU25HT

Note: Mitsubishi Electric (MESCA) supports the use of only MESCA supplied and approved accessories for proper functioning of the unit(s). Use of non-MESCA supported accessories will affect warranty coverage.

Note:
Ventilation air to be introduced independent of or in series with VRF indoor units.
Please refer to local codes for the required ventilation rates specific to the application.

*1 – All components of the system must be compatible. For more details on system compatibility, please refer to Technical Bulletin 100-151 available on our website.

Notes:

SPECIFICATIONS

Capacity*	
Cooling.....	6,000 Btu/h
Heating.....	6,700 Btu/h
Power	
Power Source.....	208 / 230V, 1-phase, 60Hz
Power Consumption	
Cooling.....	0.05 kW
Heating.....	0.03 kW
Current	
Cooling (208/230V).....	0.42 / 0.41A
Heating (208/230V).....	0.32 / 0.31A
Minimum Circuit Ampacity (MCA *) (208/230V).....	0.47 / 0.50A
Maximum Overcurrent Protection (MOCP) Fuse.....	15 A

*** All electrical work shall comply with National (CEC) and local codes and regulations.**

External Finish..... Galvanized Steel Sheets

External Dimensions

Inches..... 7-7/8 h x 31-1/8 w x 27-9/16 d
mm..... 200 h x 790 w x 700 d

Net Weight..... 42 lbs / 19 kg

Coil Type..... Cross Fin
(Aluminum Fin and Copper Tube)

Fan

Type x Quantity..... Sirocco Fan x 2
Airflow Rate (Low - Mid - High)..... 176 - 212 - 247 CFM
External Static Pressure..... 0.02 - 0.06 - 0.14 - 0.20" WG
Motor Type..... DC Motor

Air Filter..... Polypropylene Honeycomb

Refrigerant Piping Dimensions (R410A)

Liquid (High Pressure)..... 1/4" / 6.35 mm Brazed
Gas (Low Pressure)..... 1/2" / 12.7 mm Brazed

Drainpipe Dimension..... O.D. 1-1/4" / 32 mm

Sound Pressure Levels

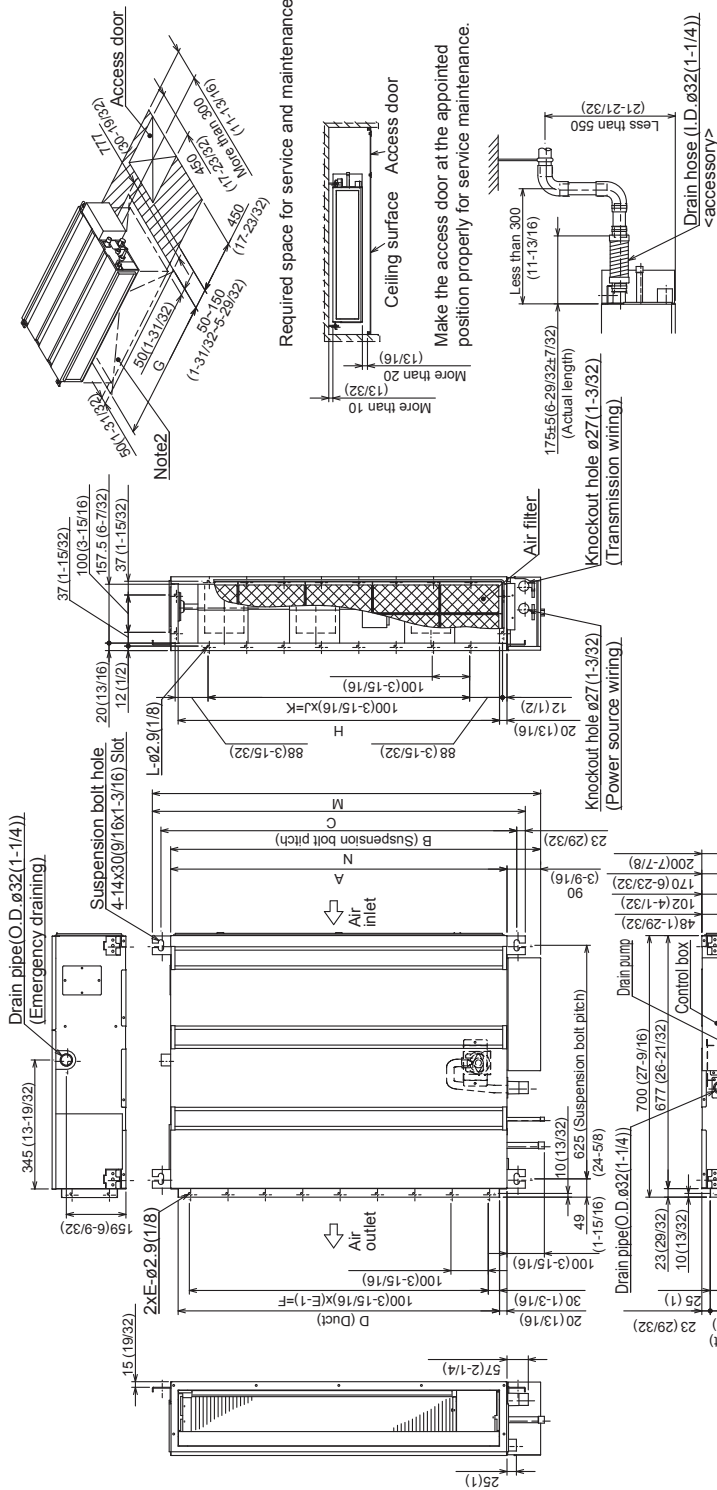
Low - Mid - High..... 22 - 24 - 28 dB(A)

* Cooling / Heating capacity indicated at the maximum value at operation under the following conditions:
Cooling | Indoor: 80° F (27° C) DB / 67° F (19° C) WB, Outdoor 95° F (35° C) DB
Heating | Indoor: 70° F (21° C) DB, Outdoor 47° F (8° C) DB / 43° F (6° C) WB

Should this document be altered or changed without MESCA's permission, it becomes null and void. MESCA assumes no responsibility for any consequences in such cases.

Model: PEFY-P06NMSU-E – DIMENSIONS

Unit : mm(in)

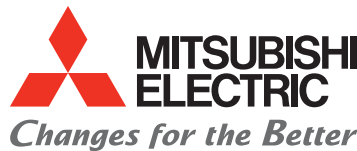


- Note**
1. Use M10 screw for the Suspension bolt (field supply).
 2. Keep the service space for the maintenance at the bottom.
 3. This chart indicates for PEFY-P15-18NMSU-ER20 models, which has 3 fans.
PEFY-P06-12NMSU-ER2 models have 2 fans.
PEFY-P24NMSU-ER2 model have 4 fans.
 4. In case of the inlet duct is used, remove the air filter(supply with the unit), then install the filter(field supply) at suction side.

*1:R410A outdoor unit
*2:R22 outdoor unit

Model	A	B	C	D	E	F	G	H	J	K	L	M	N	① Gas pipe	② Liquid pipe
PEFY-P06-08-12NMSU-ER2	700 (27-9/16)	72 (28-5/8)	598 (23-5/8)	60 (23-5/8)	7 (3-1/2)	6	0.00	8660 (337-1/2)	5	500 (19-11/16)	16 (5-11/16)	839 (33-1/8)	790 (31-1/8)	ø12.7(1/2)	ø6.35(1/4)
PEFY-P15NMSU-ER2	900 (35-7/16)	952 (37-1/2)	998 (39-3/16)	880 (34-7/16)	9	800 (31-1/2)	1000 (39-3/8)	850 (33-7/16)	7	700 (27-9/16)	20 (40-23/32)	1039 (40-23/32)	990 (39)	ø12.7(1/2)	ø6.35(1/4)
PEFY-P18NMSU-ER2	1100 (43-3/8)	1152 (45-3/8)	1198 (47-3/16)	1060 (41-3/4)	11	1000 (39-3/8)	1200 (47-1/4)	1080 (42-3/4)	9	900 (35-7/16)	24 (48-25/32)	1239 (48-25/32)	1190 (46-7/8)	ø15.88(5/8)	ø9.52(3/8)

Should this document be altered or changed without MESCA's permission, it becomes null and void. MESCA assumes no responsibility for any consequences in such cases.



for a greener tomorrow

