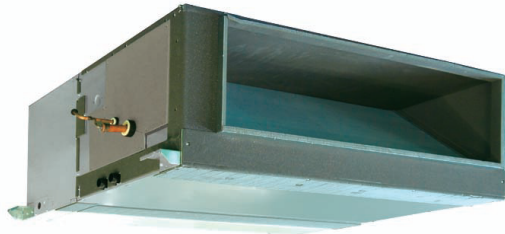


Job Name:

Schedule Reference:

Date:



GENERAL FEATURES

- R410A refrigerant
- Ten sizes from 15,000 to 96,000 Btu/h
- Ducted fan coil supporting multiple configurations for flexible installation
- Optional condensate lift; lifts to 21-21/32" (550mm)
- Quiet operation from 25 to 46 dB(A)
- IT Terminal plug

SPECIFICATIONS

Capacity*

Cooling.....72,000 Btu/h
Heating.....80,000 Btu/h

Power

Power Source.....208 / 230V, 1-phase, 60Hz

Power Consumption**

Cooling..... 0.63 kW
Heating..... 0.63 kW

Current

Cooling..... 3.67 / 3.32 A
Heating..... 3.67 / 3.32 A

Minimum Circuit Ampacity (MCA *)..... 7.7 A

Maximum Overcurrent Protection (MOCP) Fuse.....15 A

*** All electrical work shall comply with National (CEC) and local codes and regulations.**

External Finish.....Galvanized-steel Sheet

External Dimensions

Inches..... 18-9/16 x 49-1/4 x 44-1/8
mm..... 470 H x 1250 W x 1,120 D

Note:

*1 – All components of the system must be compatible. For more details on system compatibility, please refer to Technical Bulletin 100-151 available on our website.

Notes:

Net Weight

Unit.....214 lbs. / 97 kg

Coil Type.....Cross Fin
(Aluminum Fin and Copper Tube)

Fan

Type x Quantity.....Sirocco Fan x 2
Airflow Rate (Low-Mid-High)..... 1,766 - 2,154 - 2,542 CFM

External Static Press.

(208V) *** <0.200> - <0.401> - 0.602 - <0.803> - <1.004> in.WG
(230V) *** <0.200> - <0.401> - 0.602 - <0.803> - <1.004> in.WG

Motor

Type..... DC motor.
Output.....0.870 kW

Air Filter.....Optional

Refrigerant Piping Dimensions

Liquid (High Pressure)..... 3/8" / 9.52 mm (Brazed)
Gas (Low Pressure)..... 3/4" / 19.05 mm (Brazed)

Drainpipe Dimension.....O.D. 1-1/4" / 32 mm

Sound Pressure Levels

Low-Mid-High...(208V)..... 36 - 39 - 43 dB(A)
Low-Mid-High...(230V)..... 36 - 39 - 43 dB(A)

OPTIONS

- External Heat Adaptor.....PAC-YU25HT
- Drain Pump.....PAC-KE05DM-F
- Filter Box.....PAC-KE250TB-F
- Long-life Filter.....PAC-KE85LAF

* Cooling / Heating capacity indicated at the maximum value at operation under the following conditions:

Cooling: Indoor 80°F (27°C) DB / 67°F (19°C) WB, Outdoor 95°F (35°C) DB

Heating: Indoor 70°F (21°C) DB, Outdoor 47°F (8°C) DB / 43°F (6°C) WB

Note: Ventilation air: Providing sufficient ventilation air is an important part of every building design. ASHRAE Standard 62 provides the minimum ventilation air requirement. Also, check local codes.

** The values are measured at the rated external static pressure.

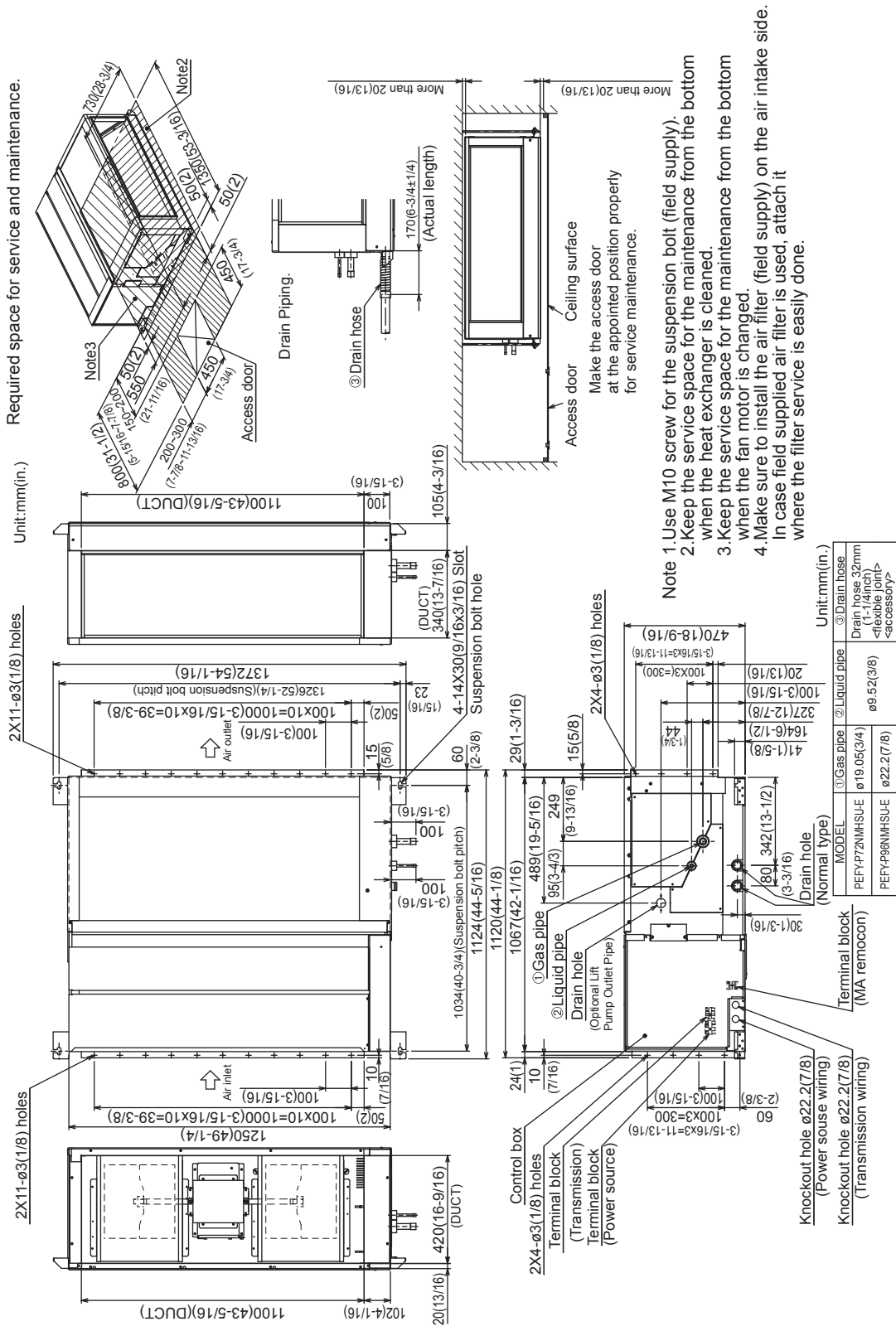
*** The rated external static pressure is shown without < >. The factory setting is the rated setting.

Note: Mitsubishi Electric (MESCA) supports the use of only MESCA supplied and approved accessories for proper functioning of the unit(s). Use of non-MESCA supported accessories will affect warranty coverage.

Should this document be altered or changed without MESCA's permission, it becomes null and void. MESCA assumes no responsibility for any consequences in such cases.



Model: PEFY-P72NMHSU-E – DIMENSIONS

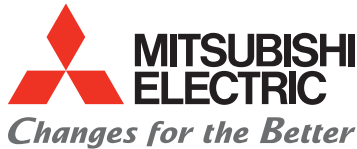


Should this document be altered or changed without MESCA's permission, it becomes null and void. MESCA assumes no responsibility for any consequences in such cases.



Intertek

Form # SB_PEFY-P72NMHSU-E_202106
 Specifications are subject to change without notice.
 www.MitsubishiElectric.ca
 © 2021 Mitsubishi Electric Sales Canada Inc.



for a greener tomorrow

