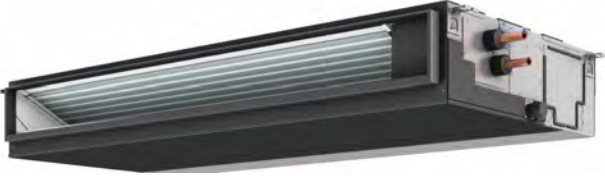


Job Name:	Location:
Schedule Reference:	Submitted By:
Submitted To:	Reference: Approval: Construction:
Engineer:	Date: Application:



Images provided for reference purposes only

- HVRF Fan Coil Unit designed specifically for use with CITY MULTI outdoor units
- Choice of three fan speeds
- Built-in condensate lift; lifts to 27-9/16" (700mm)
- 9-7/8" (250mm) high for low ceiling heights
- Highly efficient DC motor
- Dual setpoint functionality ^{*10}
- IT Terminal (CN105)

Specifications:

Power source		1-phase 208/230 V 60 Hz	
MCA / MOP	A	4.25 / 15	
Cooling capacity	^{*1} BTU/h	36,000	
	^{*1} kW	10.6	
	^{*2} Power input kW	0.222	
	^{*2} Current input A	2.01/1.82	
Heating capacity	^{*3} BTU/h	40,000	
	^{*3} kW	11.7	
	^{*2} Power input kW	0.220	
	^{*2} Current input A	2.01/1.82	
External finish		Galvanized steel plate	
External dimension H x W x D		inch	9-7/8 x 55-1/8 x 28-7/8
		mm	250 x 1,400 x 732
Net weight		lbs (kg)	82 (37)
Heat exchanger		Cross fin (Aluminum fin and copper tube)	
		Water Volume	L
			2.7
FAN	Type x Quantity		Sirocco fan x 3
	^{*4} External static press.	in. WG	<0.14> - 0.20 - <0.28> - <0.40> - <0.60>
		Pa	<35> - 50 - <70> - <100> - <150>
	Motor Type		DC motor
	Motor output		0.300
	Driving mechanism		Direct-driven by motor
	Air flow rate		(Low-Mid-High)
cfm			883 - 1,077 - 1,271
m ³ /min			25.0 - 30.5 - 36.0
		L/s	417 - 508 - 600
Sound pressure level (measured in anechoic room)		(Low-Mid-High)	
		^{*2} dB <A>	35-39-43
Insulation material		EPS, Polyethylene foam, Ure- thane foam	
Air filter		PP honeycomb fabric.	
Protection device		Fuse	
Refrigerant control device		-	
Connectable HBC controller		CMB-WP-NU-AA, CMB-WP- NU-AB	
Water piping diameter ^{*5}			
Connection size		Inlet	mm O.D.
		Outlet	mm O.D.
Field pipe size		Inlet	mm I.D. [in I.D.]
		Outlet	mm I.D. [in I.D.]
Field drain pipe size		inch (mm)	O. D.1-1/4 (32)

Model No. Description: (Optional Accessories)

PAC-YU25HT	External Heater Adapter
FBM2-4-A	Filter Box with MERV 13 Filter
PAC-KE94TB-E	Filter Box

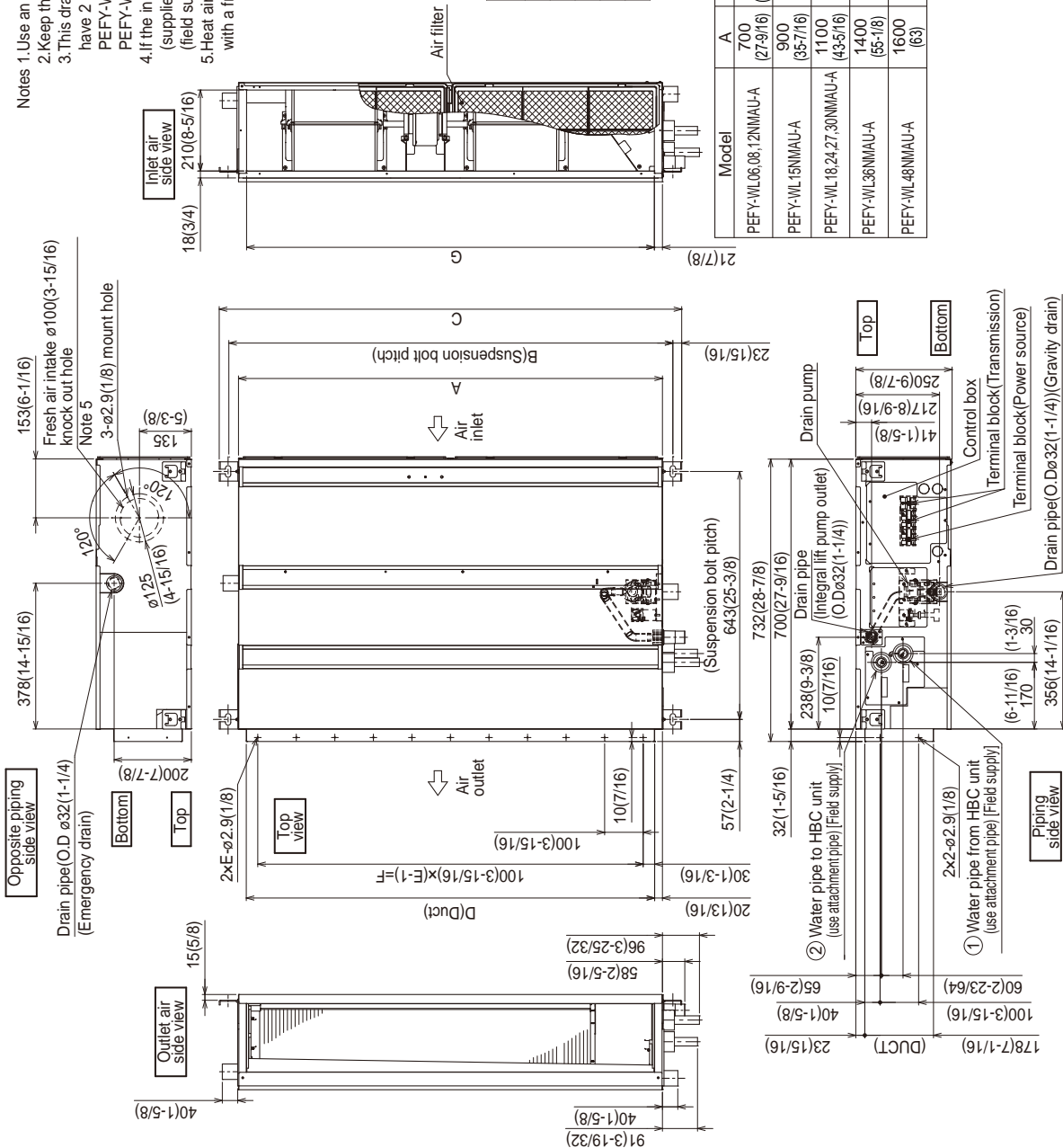
Notes:

1. Nominal cooling conditions
 Indoor: 80°FDB./67°FWB. (26.7°CDB./19.4°CWB.) Outdoor: 95°FDB. (35°CDB.) Pipe length: 25 ft. (7.6 m), Level difference: 0 ft. (0 m)
2. The values are measured at the factory setting of external static pressure.
3. Nominal heating conditions
 Indoor: 70°FDB. (21.1°CDB.), Outdoor: 47°FDB./43°FWB. (8.3°CDB./6.1°CWB.) Pipe length: 25 ft. (7.6 m), Level difference: 0 ft. (0 m)
4. The factory setting of external static pressure is shown without < >.
5. Install a valve on the water inlet/outlet.
6. Install an automatic air vent.
7. All electrical work shall comply with National (CEC) and local codes and regulations.
8. Install hose bibbs
9. Ventilation air to be introduced independent of or in series with HVRF indoor units. Please refer to local codes for the required ventilation rates specific to the application.
10. All components of the system must be compatible.
11. Applications should be restricted to comfort heating and cooling only; process/equipment heating and cooling applications are not recommended.
12. Mitsubishi Electric Sales Canada Inc. (MESCA) supports the use of only MESCA supplied and approved components and accessories for proper functioning of the unit(s).
13. Should any person change this document in any manner whatsoever without MESCA's written permission, the document shall be of no force and effect and any change shall be deemed to be a representation and warranty made by that person and not MESCA. That person, and not MESCA, shall assume full responsibility for the consequences of such changes.

MESCA assumes no responsibility for any consequences in such cases.

Indoor Unit Outline and Dimensions:

- Notes 1. Use an M10 screw for the suspension bolt (field supply).
 2. Keep the service space for maintenance at the bottom.
 3. This drawing is for PEFY-WL18-24-27-30NMAU-A models, which have 2 fans. PEFY-WL06-08-12NMAU-A models have 1 fan. PEFY-WL15NMAU-A model have 2 fans.
 PEFY-WL36-48NMAU-A models have 3 fans.
 4. If the inlet duct is used, remove the air filter (supplied with the unit), then install the filter (field supply) at the suction side.
 5. Heat air to 0° (32°F) or higher when taking fresh air with a fresh air intake.

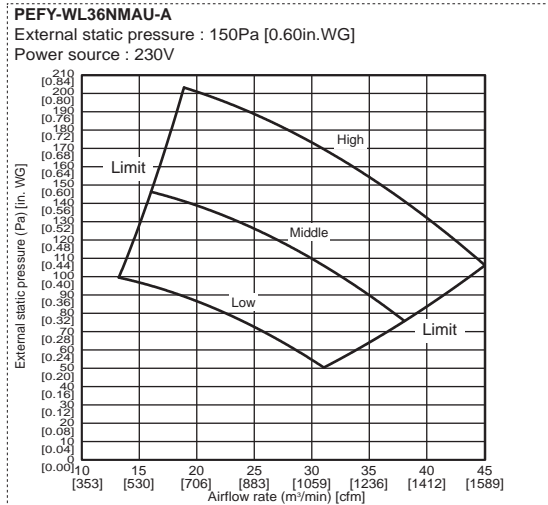
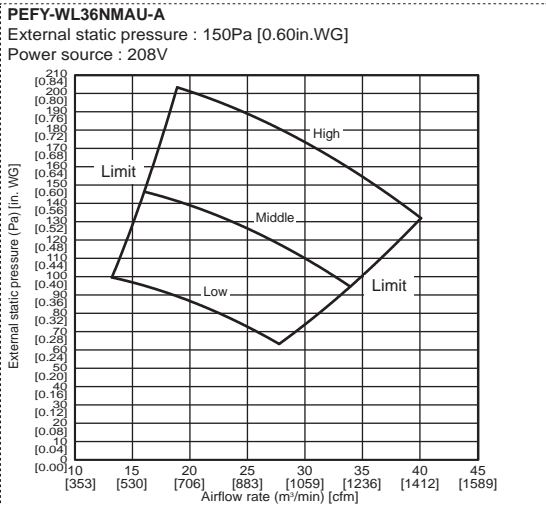
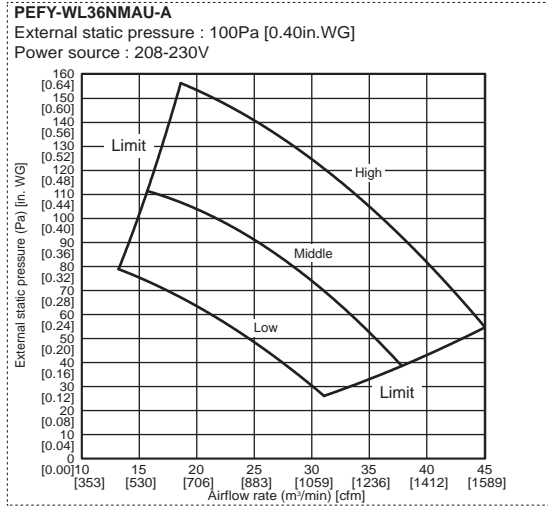
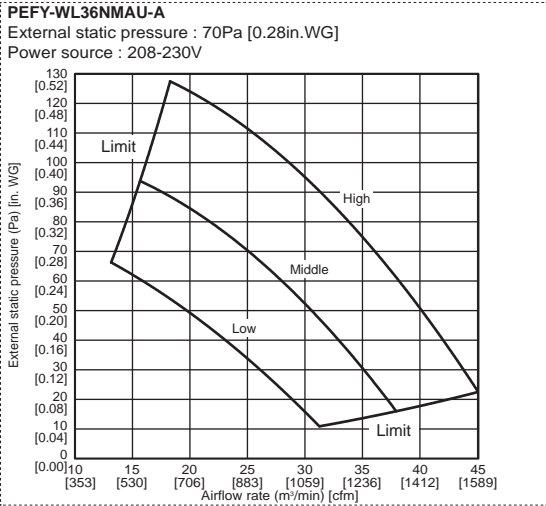
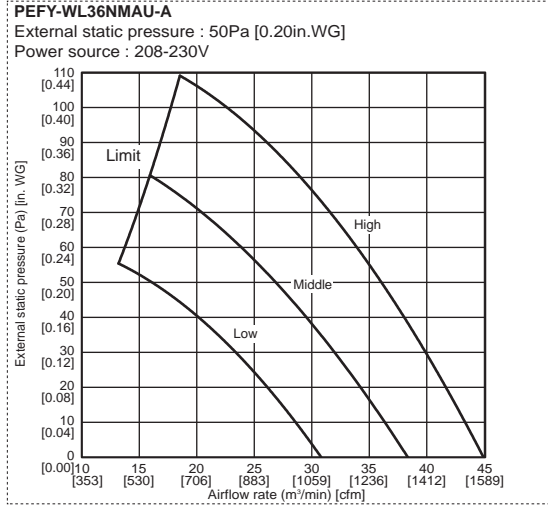
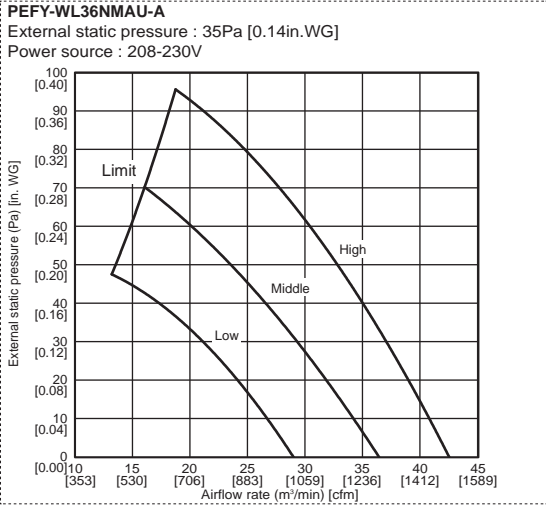


Model	① Water pipe from HBC unit	② Water pipe to HBC unit
PEFY-WL06,08,12NMAU-A	ø22.0	ø22.0
PEFY-WL15NMAU-A		
PEFY-WL18,24,27,30NMAU-A		
PEFY-WL36NMAU-A		

Model	Unit: mm (in.)						
	A	B	C	D	E	F	G
PEFY-WL06,08,12NMAU-A	700 (27-9/16)	754 (29-11/16)	800 (31-1/2)	660 (26)	7	600 (23-5/8)	658 (25-15/16)
PEFY-WL15NMAU-A	900 (35-7/16)	954 (37-9/16)	1000 (39-3/8)	860 (33-7/8)	9	800 (31-1/2)	858 (33-13/16)
PEFY-WL18,24,27,30NMAU-A	1100 (43-5/16)	1154 (45-7/16)	1200 (47-1/4)	1060 (41-3/4)	11	1000 (39-3/8)	1058 (41-11/16)
PEFY-WL36NMAU-A	1400 (55-1/8)	1454 (57-1/4)	1500 (59-1/16)	1360 (53-9/16)	14	1300 (51-3/16)	1358 (53-1/2)
PEFY-WL48NMAU-A	1600 (63)	1654 (65-1/8)	1700 (66-15/16)	1560 (61-7/16)	16	1500 (59-1/16)	1558 (61-3/8)

Unit: mm (in.)

Fan Characteristics Curves:



Note: MERV13 filter Box & Filter is not reflected in these displayed curves, reference Form # SB_FBM2-Series_Filter_Boxes for full details.

