

Job Name:

Schedule Reference:

Date:



GENERAL FEATURES

- Dual set point functionality (*1)
- Compact floor-mount
- Two-speed settings
- Controls can be wall-mounted or unit-mounted in a hidden case
- IT Terminal Plug

OPTIONS

- External Heater Adapter..... PAC-YU25HT

Note: Mitsubishi Electric (MESCA) supports the use of only MESCA supplied and approved accessories for proper functioning of the unit(s). Use of non-MESCA supported accessories will affect warranty coverage.

Note:

Ventilation air to be introduced independent of indoor units.
Please refer to local codes for the required ventilation rates specific to the application.

*1 – All components of the system must be compatible. For more details on system compatibility, please refer to Technical Bulletin 100-151 available on our website.

Notes:

SPECIFICATIONS

Capacity*

Cooling18,000 Btu/h
Heating20,000 Btu/h

Power

Power Source 208 / 230V, 1 phase, 60Hz

Power Consumption

Cooling (208/230V).....0.078 / 0.093 kW
Heating (208/230V).....0.078 / 0.093 kW

Current

Cooling (208/230V)..... 0.38 / 0.42 A
Heating (208/230V)..... 0.38 / 0.42 A

Minimum Circuit Ampacity (MCA *) (208/230V) . . .0.48 / 0.53 A
Maximum Overcurrent Protection (MOCP)15 A

*** All electrical work shall comply with National (CEC) and local codes and regulations.**

External Finish Acrylic paint (5Y 8/1)

Dimensions

Inches24-13/16 h x 55-17/32 w x 8-11/16 d
mm630 h x 1410 w x 220 d

Net Weight67 lb / 30 kg

Fan

Type x QuantitySirocco fan x 2
Airflow Rate (Low - High) 353 – 459 CFM
Motor Type..... Single phase induction motor

External Static Pressure..... 0" WG

Air FilterStandard

Refrigerant Pipe Dimensions

Liquid1/4" / 6.35 mm flare
Gas1/2" / 12.7 mm flare

Drainpipe DimensionO.D. 1-3/32" / 27 mm

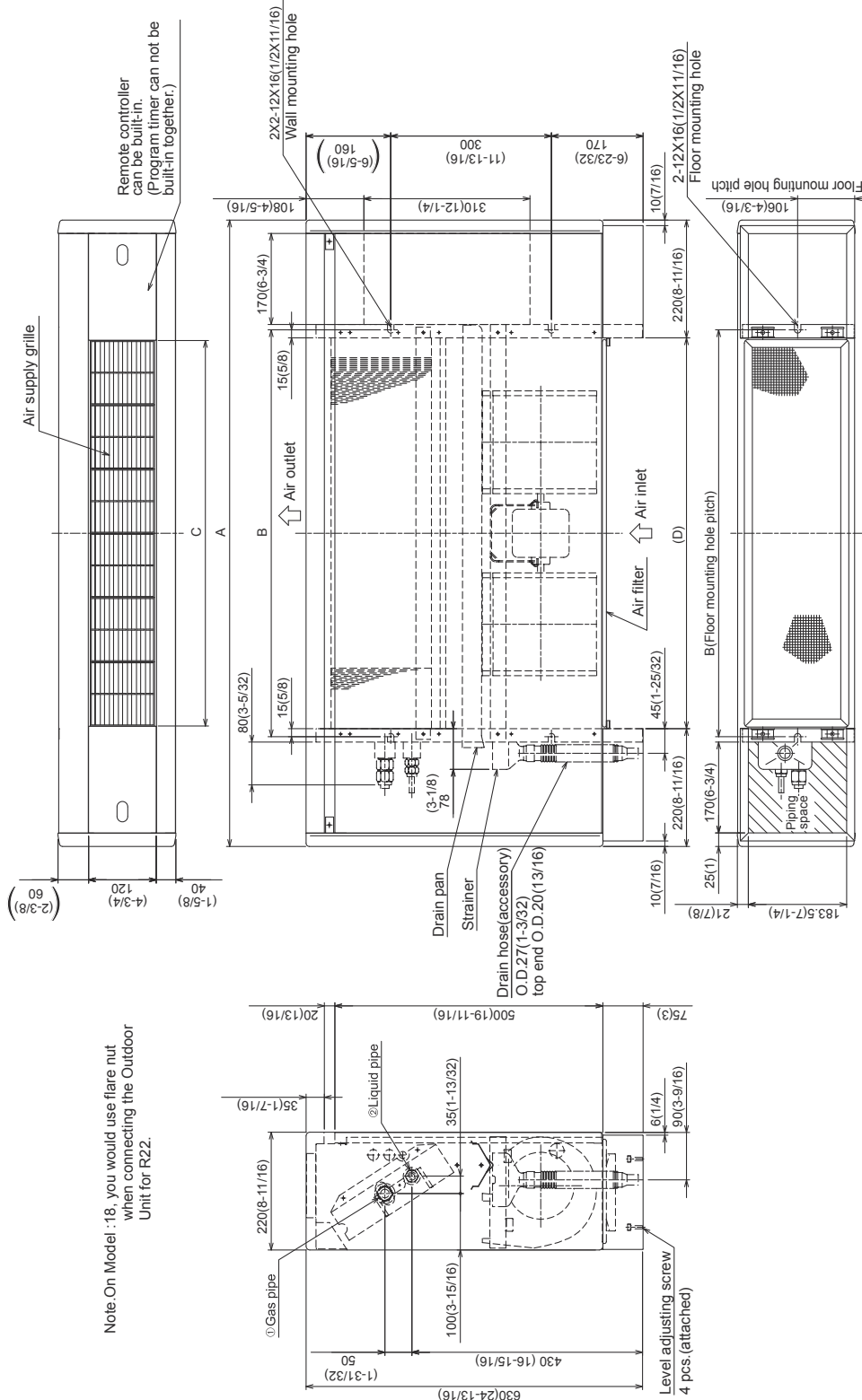
Sound Level (Low - High)38 - 43 dB (A)

* Cooling / Heating capacity indicated at the maximum value at operation under the following conditions:

Cooling | Indoor: 80° F (27° C) DB / 67° F (19° C) WB, Outdoor 95° F (35° C) DB
Heating | Indoor: 70° F (21° C) DB, Outdoor 47° F (8° C) DB / 43° F (6° C) WB

Model: PFFY-P18NEMU-E – DIMENSIONS

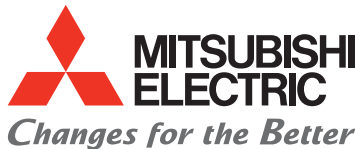
Unit : mm(in)



Note: On Model :18, you would use flare nut when connecting the Outdoor Unit for R22.

Model	mm(in.)			
	A	B	C	D
PFFY-P06NEMU-E	1050(41-11/32)	640(25-7/32)	600(23-5/8)	610(24-1/16)
PFFY-P08NEMU-E	1050(41-11/32)	640(25-7/32)	600(23-5/8)	610(24-1/16)
PFFY-P12NEMU-E	1170(46-1/16)	760(29-15/16)	720(28-3/8)	730(28-3/4)
PFFY-P15NEMU-E	1170(46-1/16)	760(29-15/16)	720(28-3/8)	730(28-3/4)
PFFY-P18NEMU-E	1410(55-17/32)	1000(39-3/8)	960(37-13/16)	970(38-1/4)
PFFY-P24NEMU-E	1410(55-17/32)	1000(39-3/8)	960(37-13/16)	970(38-1/4)

① Gas pipe <flare>	② Liquid pipe <flare>
ø12.7(1/2)	ø6.35(1/4)
ø12.7(1/2)	ø6.35(1/4)
ø12.7(1/2)	ø6.35(1/4)
ø12.7(1/2)	ø6.35(1/4)
ø12.7(1/2)	ø6.35(1/4)
ø15.88(5/8)	ø9.52(3/8)



for a greener tomorrow



Should this document be altered or changed without MESCA's permission, it becomes null and void. MESCA assumes no responsibility for any consequences in such cases.