

SUBMITTAL DATA: PKA-A12LA-TH & PUZ-A12NKA7
12,000 BTU/H WALL-MOUNTED HEAT PUMP SYSTEM

Job Name:	Engineer:
Purchaser:	Application:
Submitted To:	For: <input type="checkbox"/> Reference <input type="checkbox"/> Approval <input type="checkbox"/> Construction
Submitted By:	Location:
System Designation:	Schedule No.:



Indoor Unit: PKA-A12LA-TH



Outdoor Unit: PUZ-A12NKA7 (-BS)

UNIT OPTION:

Standard Model.....PUZ-A12NKA7
Seacoast (BS) Model.....PUZ-A12NKA7-BS

ACCESSORIES:

Indoor

External Heater Adaptor (PAC-YU25HT)

Controls

- Wireless Controller (MHK1)
- Advanced Wired Controller (PAR40MAAU)
- Simple Wired Controller (PAC-YT53CRAU)
- Wireless Remote Controller (PAR-FL32MA)
- Thermostat Interface (PAC-US444CN)
- M-NET Adapter (PAC-SJ96MA-E)

Outdoor Unit

- Front Wind Guard (PFR-12-18)
- Rear Wind Guard (PRE-12-18)
- Side Wind Guard (PSD-12-18)

Note: Mitsubishi Electric (MESCA) supports the use of only MESCA supplied and approved Snow Guard / Wind Deflectors / Windscreens and accessories for proper functioning of the unit(s). Use of non-MESCA supported Snow Guard / Wind Deflectors / Windscreens and accessories will affect warranty coverage.

SPECIFICATIONS:

Rated Conditions (Capacity / Input)*		
Cooling	Btu/h / W	12,000 / 900
Heating at 47° F	Btu/h / W	14,000 / 1,030
Heating at 17° F	Btu/h / W	9,100 / 1,120

* Rating Conditions per AHRI Standard:
Cooling | Indoor: 80° F (27° C)DB / 67° F (19° C)WB; Outdoor: 95° F (35° C)DB / 75° F (24° C)WB
Heating at 47° F | Indoor: 70° F (21° C)DB / 60° F (16° C)WB; Outdoor: 47° F (8° C)DB / 43° F (6° C)WB
Heating at 17° F | Indoor: 70° F (21° C)DB / 60° F (16° C)WB; Outdoor: 17° F (-8° C)DB / 15° F (-9° C)WB

Capacity Range		
Cooling	Btu/h	5,800 - 12,000
Heating at 47° F	Btu/h	5,500 - 18,000

Operating Range		
Cooling	0° F** (-18° C) to 115° F (46° C) DB	
Heating	12° F (-11° C) to 70° F (21° C) DB	

** Windscreens required for cooling operation below 23° F (-5° C)

AHRI Efficiency Ratings	
EER	13.3
SEER	21.0
HSPF IV / V	10.2 / 8.4
COP at 47° F	3.90
COP at 17° F	2.38

Specifications are subject to change without notice.

Electrical Power Requirements	208 / 230V, 1-Phase, 60 Hz
--------------------------------------	----------------------------

Minimum Circuit Ampacity (MCA) *	Breaker Size	MOCP (Outdoor)
Indoor 1 AMP	Outdoor 11 AMP	15 AMP / 28 AMP

***All electrical work shall comply with National (CEC) and local codes and regulations.**

Indoor Unit			
Fan Motor (ECM)	F.L.A.	0.19	
Fan Motor Output	W	30	
SHF	0.75 / 0.88**		
Field Drainpipe Size O.D	in. (mm)	5/8 (16)	Moisture Removal - 2.7pt./h

Outdoor Unit			
Compressor	DC INVERTER-driven Twin Rotary		
Fan Motor (ECM)	F.L.A.	0.5	
Fan Motor Power	W	46	

Airflow Rate (Low-Mid1-Mid2-Hi)			
Indoor (Cooling)	DRY	CFM	265-290-325-385
	WET		215-255-320-375
Outdoor	DRY	1,590	

Sound Pressure Level			
Indoor (Low-Mid1-Mid2-Hi)			34-37-40-43
Outdoor	Cooling	dB(A)	44
	Heating		46

External Dimensions		
Indoor (H x W x D)	In.(mm)	11-25/32 x 35-23/64 x 9-11/32 (299 x 898 x 237)
Outdoor (H x W x D)		24-13/16 x 31-13/16 + 7/16 x 11-3/16 (630 x 809 + 62 x 300)

Net Weight		
Indoor	Lbs.(kg)	28 (12.7)
Outdoor		93 (42)

External Finish	
Indoor	White Munsel No. 0.7PB 9.2/0.4
Outdoor	Ivory Munsel No. 3Y 7.8 / 1.1

Refrigerant	R410A ; 4lbs., 7oz. (2.0kg)
--------------------	-----------------------------

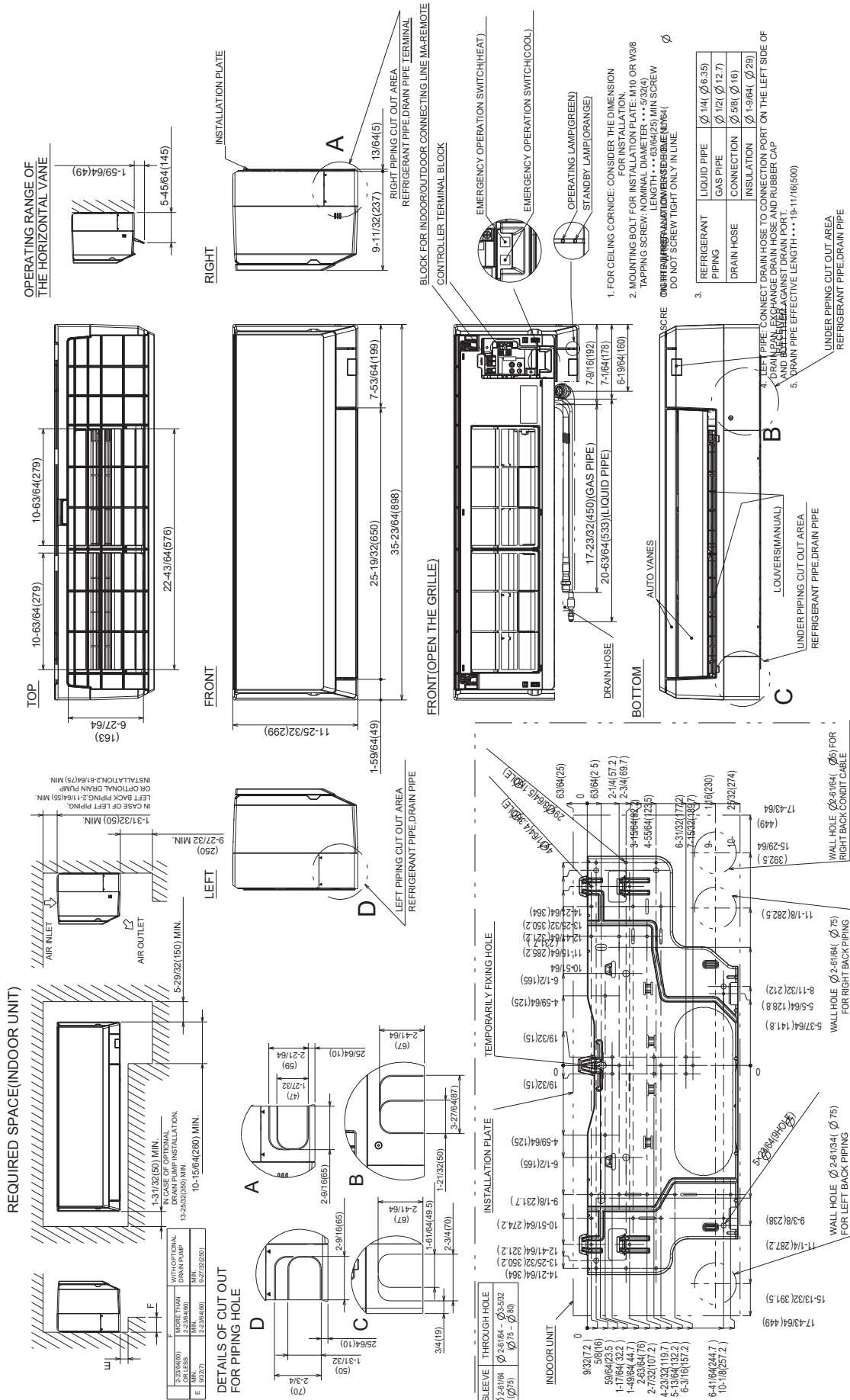
Refrigerant Piping (Flared)		
Liquid (High Pressure)	In.(mm)	1/4 (6.35)
Gas (Low Pressure)		1/2 (12.7)
Maximum Total Refrigerant Pipe Length	Fl. (m)	100 (30)
Maximum Vertical Separation	Fl. (m)	100 (30)

**Asterisk denotes performance specification based on ASHRAE / ANSI Standard 127-2012 for Data Processing and Information Technology Equipment Space Room Cooling

Should this document be altered or changed without MESCA's permission, it becomes null and void. MESCA assumes no responsibility for any consequences in such cases.

DIMENSIONS: PKA-A12LA-TH

Unit: in. (mm)



Specifications are subject to change without notice.

Should this document be altered or changed without MESCA's permission, it becomes null and void. MESCA assumes no responsibility for any consequences in such cases.

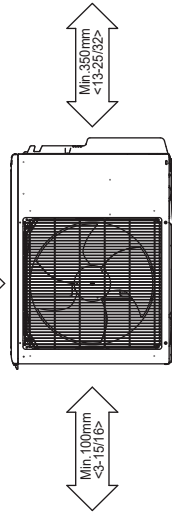
DIMENSIONS: PUZ-A12NKA7

Should this document be altered or changed without MESCA's permission, it becomes null and void. MESCA assumes no responsibility for any consequences in such cases.

Unit: mm (in.)

Free space around the outdoor unit
(basic example)

100mm<3-15/16> or more as long as no obstacle is placed on the rear and right-and-left sides of the unit

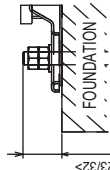


2 sides should be open in the right, left and rear side.

FOUNDATION BOLTS

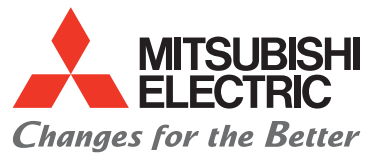
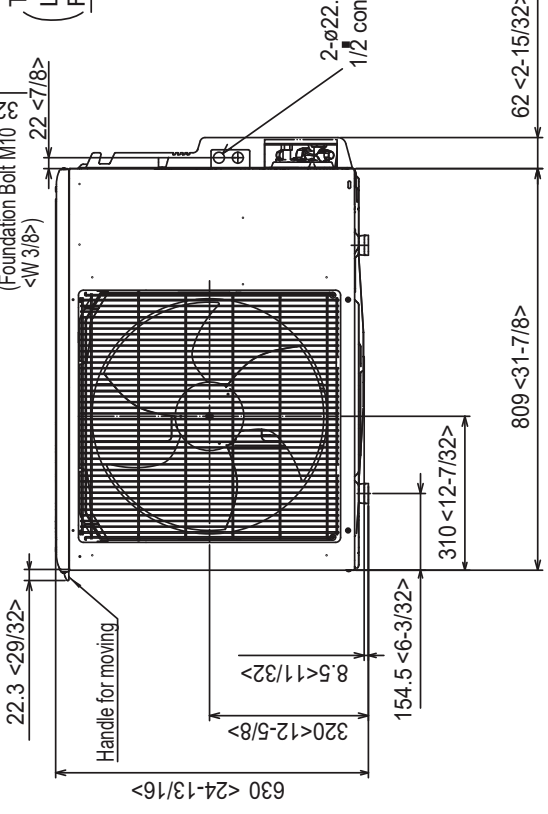
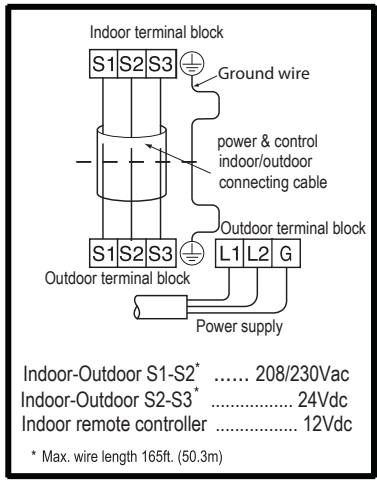
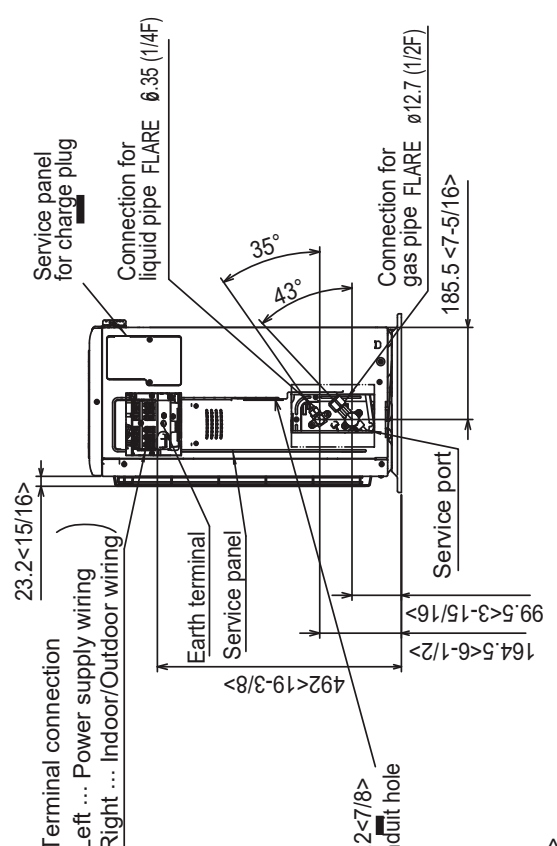
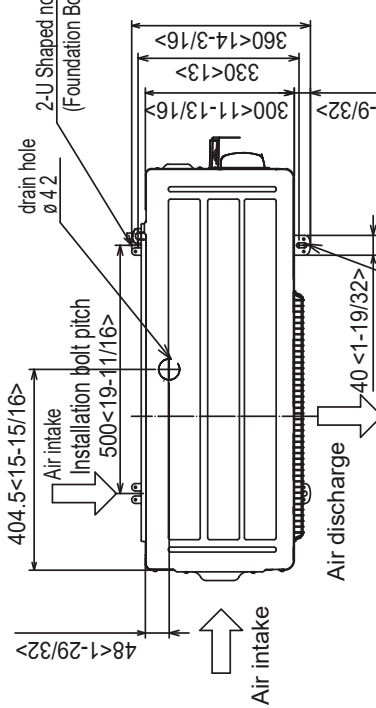
Please secure the unit firmly with 4 foundation (M10<W3/8>) bolts. (Bolts, washers and nut must be purchased locally).

<Foundation bolt height>



Max. 18 mm<23/32>

2-U Shaped notched holes
(Foundation Bolt M10<W 3/8>)



for a greener tomorrow

