

Job Name:

Schedule Reference:

Date:



### GENERAL FEATURES

- Dual set point functionality (\*1)
- Compact, lightweight, shiny-white, flat-panel design
- Quiet operation
- Multiple fan-speed settings
- Intake grille filter is easily removed for cleaning
- Wireless receiver on board
- IT Terminal Plug

### OPTIONS

- External Heater Adapter..... PAC-SA88HA-EP

**Note: Mitsubishi Electric (MESCA) supports the use of only MESCA supplied and approved accessories for proper functioning of the unit(s). Use of non-MESCA supported accessories will affect warranty coverage.**

Note:  
Ventilation air to be introduced independent of VRF indoor unit.  
Please refer to local codes for the required ventilation rates specific to the application.

\*1 – All components of the system must be compatible. For more details on system compatibility, please refer to Technical Bulletin 100-151 available on our website.

Notes:

### SPECIFICATIONS

#### Capacity\*

Cooling.....6,000 Btu/h  
Heating.....6,700 Btu/h

#### Power

Power Source.....208 / 230V, 1-phase, 60Hz

#### Power Consumption

Cooling..... 0.03 kW  
Heating.....0.03 kW

#### Current

Cooling..... 0.15 A  
Heating..... 0.15 A  
Minimum Circuit Ampacity (MCA \* ) .....0.19 A  
Maximum Overcurrent Protection (MOCP) Fuse.....15 A

**\* All electrical work shall comply with National (CEC) and local codes and regulations.**

External Finish.....Munsell No. 1.0Y 9.2 / 0.2

#### External Dimensions

Inches.....11-5/8 H x 32-1/8 W x 8-7/8 D  
mm.....295 H x 815 W x 225 D

#### Net Weight

Unit.....22 lbs. / 10 kg

Coil Type.....Cross Fin  
(Aluminum Plate Fin and Copper Tube)

#### Fan

Type x Quantity.....Line Flow Fan x 1  
Airflow Rate (Low-Mid1-Mid2-High).....170 - 180 - 200 - 210 CFM  
Motor Type.....One-phase Induction Motor

Air Filter.....Polypropylene Honeycomb

#### Refrigerant Piping Dimensions (R410A)

Liquid (High Pressure).....1/4" / 6.35 mm (Flare)  
Gas (Low Pressure).....1/2" / 12.7 mm (Flare)

Drainpipe Dimension.....I.D. 5/8" / 16 mm

#### Sound Pressure Levels

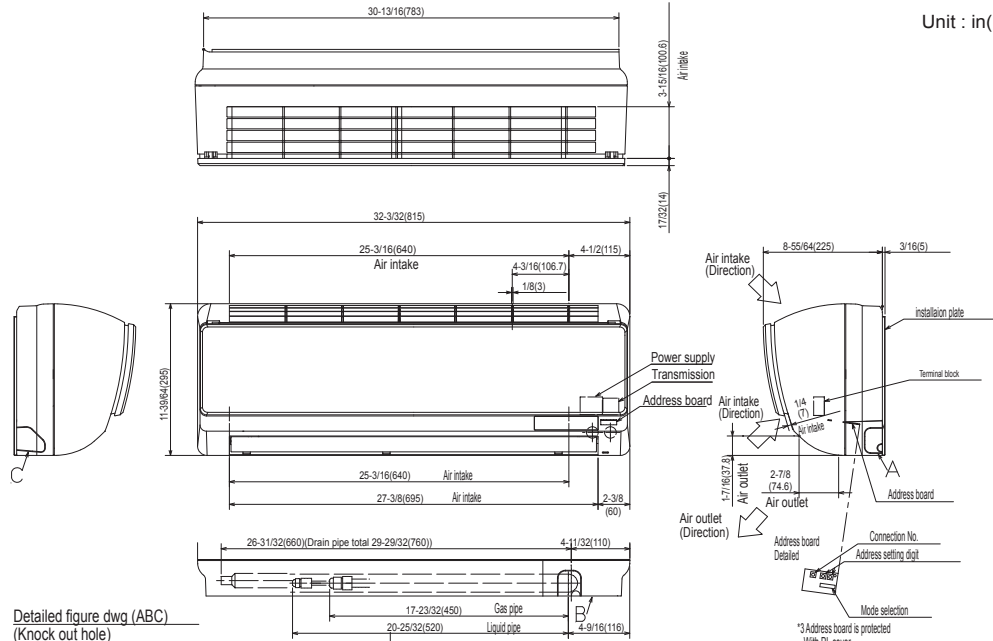
Low-Mid1-Mid2-High.....32 - 33 - 35 - 36 dB(A)

\* Cooling / Heating capacity indicated at the maximum value at operation under the following conditions:

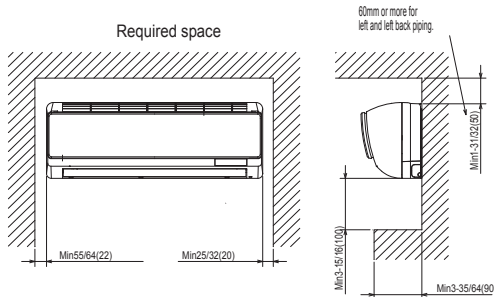
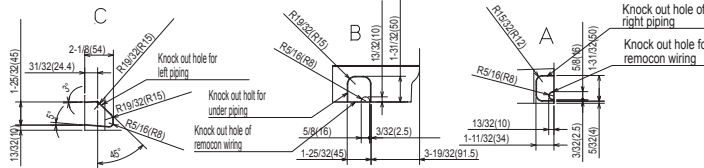
Cooling | Indoor: 80° F (27° C) DB / 67° F (19° C) WB, Outdoor 95° F (35° C) DB  
Heating | Indoor: 70° F (21° C) DB, Outdoor 47° F (8° C) DB / 43° F (6° C) WB

# Model: PKFY-P06NBMU-E2 – DIMENSIONS

Unit : in(mm)



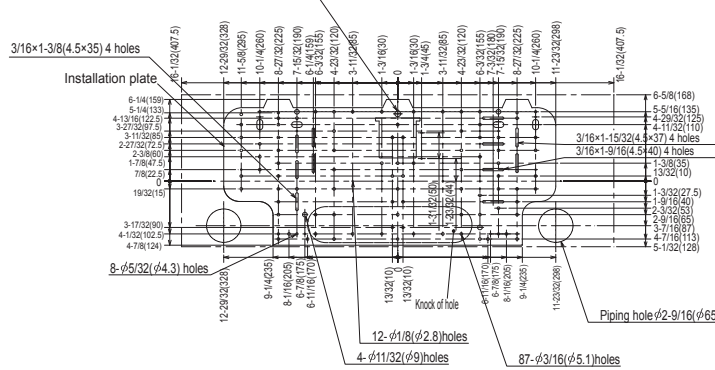
Detailed figure dwg (ABC)  
(Knock out hole)



Note 1 Use M10 or W3/8 screw for installation plate.  
 Note 2 Extension piping side.  
 Note 3 In case of connecting MA-remote controller, please  
 MA-remote controller cable in accessories to the connector.

Refrigerant piping	Liquid pipe	1/4F (φ 6.35)
	Gas pipe	1/2F (φ 12.7)
	Drain pipe	φ 5/8 (φ 16) I.D

Installation plate balance point hole Details of installation plate



Should this document be altered or changed without MESCA's permission, it becomes null and void. MESCA assumes no responsibility for any consequences in such cases.

