

Job Name:

Schedule Reference:

Date:



### GENERAL FEATURES

- Dual set point functionality (\*2)
- New 3D i-see sensor built-in (\*4)
- New stylish and square design - easier to install
- New Draft Save Mode
- Lightweight, low-profile compact design
- Customizable wide airflow pattern with adjustable vane control through unit controller
- Auto wave airflow in heating mode - independent cycling of horizontal and vertical vane positions for even heat distribution
- Built-in condensate lift mechanism; lifts to 33-1/2 in.
- Ventilation air intake supported
- Four-speed
- Auto fan
- IT Terminal plug

### ACCESSORIES:

- Grille..... (Required ordered separately) ..... PLP-41EAEU
- External Heating Adapter ..... PAC-YU25HT
- Multi-function casement ..... PAC-SJ41TM-E
- Fresh-air intake Duct Flange ..... PAC-SH65OF-E
- High efficiency filterelement (MERV 10) ..... PAC-SH59KF-E
- Simple Remote Controller ..... PAC-YT53CRAU
- Smart ME Controller ..... PAR-U01MEDU
- Wireless Remote Controller ..... PAR-FL32MA
- Wired MA Remote Controller (\*4) ..... PAR-40MAA
- Wireless Receiver ..... PAR-SR4LU-E

Model		PLFY-EP18NEMU-E1	
Power source		1-phase 208-230 V 60Hz	
Cooling capacity *1	BTU/h	18,000	
	kW	5.3	
	Power input	kW	0.04
	Current input	A	0.43
Heating capacity *2	BTU/h	20,000	
	kW	5.9	
	Power input	kW	0.04
	Current input	A	0.38
Minimum Circuit Ampacity *		A	0.54
External finish		Galvanized steel sheet	
External dimension H x W x D		inch	11-3/4 x 33-3/32 x 33-3/32
		mm	298 x 840 x 840
Net weight		lbs (kg)	55 (25)
Decoration panel	Model		PLP-41EAEU
	External finish		MUNSELL (1.0Y 9.2/0.2)
	Dimension	in.	1-9/16 x 37-13/32 x 37-13/32
	H x W x D	mm	40 x 950 x 950
Net weight		lbs (kg)	11 (5)
Heat exchanger		Cross fin	
FAN	Type x Quantity		Turbo fan x 1
	External static press.	in.WG	0.000 (208V)
		Pa	0
		in.WG	0.000 (230V)
		Pa	0
	Motor Type		DC motor
	Motor output	kW	0.12
	Driving mechanism		Direct-driven
	Air flow rate		(Low-Mid2-Mid1-High)
			cfm
		m <sup>3</sup> /min	18 - 19 - 21 - 23
Sound pressure level (measured in anechoic room)		(Low-Mid2-Mid1-High)	
		dB <A>	
		28 - 30 - 32 - 34	
Insulation material		PS	
Air filter		PP honeycomb (long life filter, anti-bacterial type)	
Protection device		Fuse	
Refrigerant control device		LEV	
Connectable outdoor unit		R410A CITY MULTI	
Refrigerant piping diameter	Liquid (R410A)	inch (mm)	1/4 (6.35) Flare
	Gas (R410A)	inch (mm)	1/2 (12.7) Flare
Field drain pipe size		inch (mm)	O.D. 1-1/4(32)

**NOTE:**

1. Mitsubishi Electric Sales Canada Inc. (MESCA) supports the use of only MESCA supplied and approved components and accessories for proper functioning of the unit(s). Use of non - MESCA supported components and accessories will affect warranty coverage. MESCA recommends (A) consideration of all applicable design and application parameters and requirements specific to any project; and (B) implementation of any countermeasures needed to address those parameters and requirements, wherever applicable.

\*2. All components of the system must be compatible. For more details on system control compatibility, please refer to Technical Bulletin 100-151 available on our website.

NOTE: Items denoted in this submittal by an asterisk (\*) are provided as specific instances or examples of system compatibility, and are not intended to represent a complete or exhaustive list of compatibility requirements.

3. Should any person change this document in any manner whatsoever without MESCA's written permission, the document shall be of no force and effect and any change shall be deemed to be a representation and warranty made by that person and not MESCA. That person, and not MESCA, shall assume full responsibility for the consequences of such changes. MESCA assumes no responsibility for any consequences in such cases.

\*4. Unit comes standard with built-in 3D i-see sensor. 3D i-see sensor functions only available with PAR-40MAA wired remote controller.

Notes:	*1 Nominal cooling conditions	*2 Nominal heating conditions
	Indoor: 80degF D.B. / 67degF W.B. (26.7degC D.B. / 19.4degC W.B.)	70degF D.B. (21.1degC D.B.)
	Outdoor: 95degF D.B. (35degC D.B.)	47degF D.B. / 43degF W.B. (8.3degC D.B. / 6.1degC W.B.)
	Pipe length: 25 ft. (7.6 m)	25 ft. (7.6 m)
	Level difference: 0 ft. (0 m)	0 ft. (0 m)

Note:

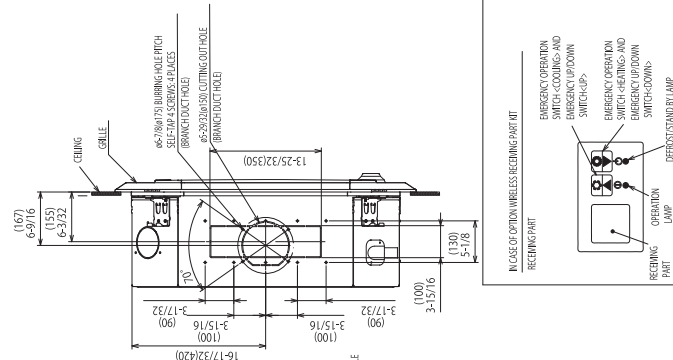
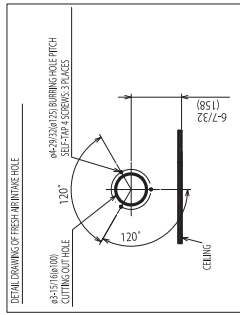
Ventilation air to be introduced independent of or in series with VRF indoor units. Please refer to local codes for the required ventilation rates specific to the application.

Notes:

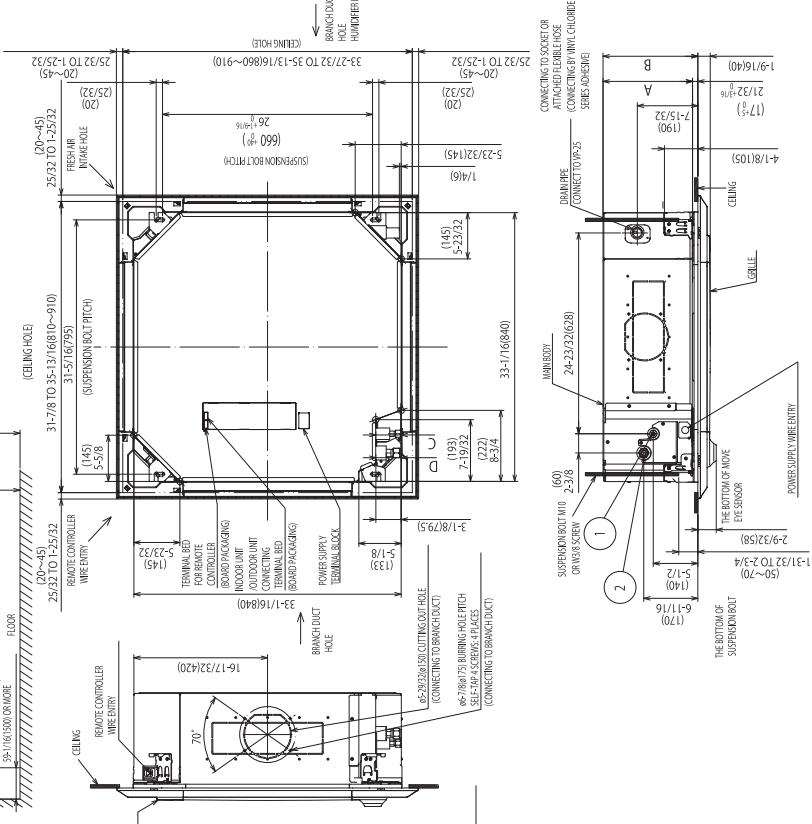
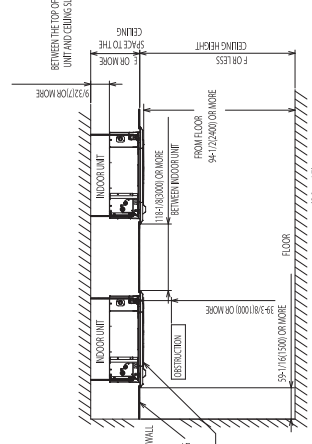
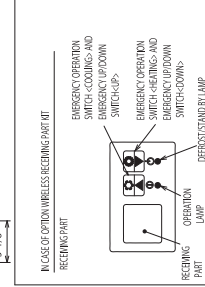
Specifications are subject to change without notice.

\*All electrical work shall comply with National (CEC) and local codes and regulations.

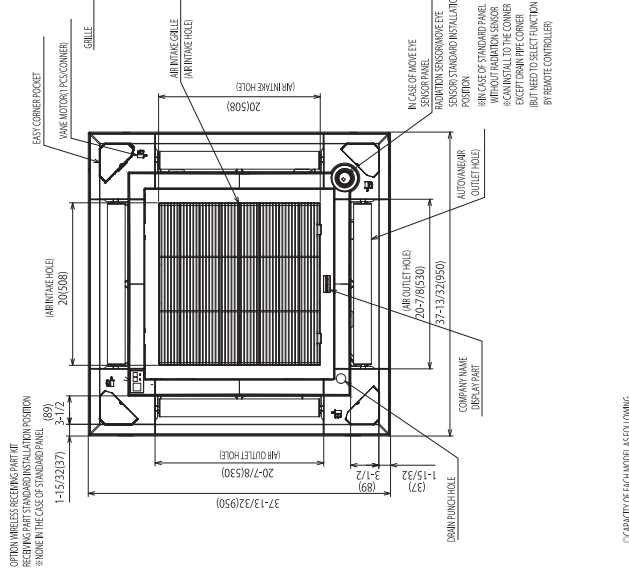
# Model: PLFY-EP18NEMU-E1R1-T – DIMENSIONS



Unit: in. (mm)



- NOTE PLEASE CHOOSE THE GRILLE FROM A STANDARD GRILLE. AUTO-GRILLE.
- 2. ENFORCE THE SUSPENSION BUT BY EARTHQUAKE RESISTANCE SUPPORTING MATERIAL WHICH USING SPRING SUSPENSION IN ACCORDANCE WITH THE NECESSARY OF EARTHQUAKE RESISTANCE IS CONDUCTED IN THE CASE WITHOUT CEILING MATERIAL COMBINATION REINFORCING.
- 3. 2.45 INCHES (62MM) MINIMUM CLEARANCE FROM THE WALL TO THE LOCAL PIPE.
- 4. 4.65 INCHES (118MM) MINIMUM CLEARANCE FROM THE WALL TO THE LOCAL PIPE.
- 5. DRAIN PUMP INCLINATION RAKE IS MAY 70° TO 80° FROM THE CEILING.
- 6. ELECTRICAL BOX MAY BE REMOVED FOR THE SERVICE PURPOSE.
- 7. MAKE SURE TO SLACK THE ELECTRICAL WIRE LITTLE BIT FOR CONTROL POWER WIRES CONNECTION.
- 8. THE INDOOR UNIT ISABLE TO BE ADJUSTED WITH THE GRILLE ATTACHED.
- 9. WHEN INSTALLING THE BRANCH DUCTS, BE SURE TO INSULATE ADEQUATELY.
- 10. OTHERS CONDENSATION AND DRIPPING MAY OCCUR.
- 11. THE UNIT IS NOT TO BE USED IN THE CASE OF HIGH HUMIDITY.
- 12. PLEASE CONFIRM THE INSTALLATION INSTRUCTIONS. PLEASE REFER TO THE RIGHT REFERENCE.
- 13. OUTLINE DIMS REFER TO EXCLUDES OUTLINE DIMS. WARNINGS FULL OPTIONAL MAINTENANCE CASEMENT AND OPTION HIGH PERFORMANCE FILTER.



CAPACITY OF EACH MODEL AS FOLLOWING  
PLFY-EP18NEMU-E1R1-T  
PLFY-EP18NEMU-E1R1-T-18

Model	A	B	C	D	E	F
06~15	9-1/2 (238)	10-5/16 (266)	3/16 (5)	3/16 (5)	10-7/16 (266)	133-5/16 (3300) OR LESS
18	11-1/16 (281)	11-3/4 (298)	3/16 (5)	3/16 (5)	12-3/8 (318)	133-5/16 (3300) OR MORE
24~48	12-1/2 (318)	13-1/4 (338)	3/16 (5)	3/16 (5)	14-1/4 (361)	175-5/16 (4400) OR LESS

Should this document be altered or changed without MESCA's permission, it becomes null and void. MESCA assumes no responsibility for any consequences in such cases.

