

Job Name:

Schedule Reference:

Date:



GENERAL FEATURES

- Dual set point functionality (*2)
- New 3D i-see sensor built-in (*4)
- New stylish and square design - easier to install
- New Draft Save Mode
- Lightweight, low-profile compact design
- Customizable wide airflow pattern with adjustable vane control through unit controller
- Auto wave airflow in heating mode - independent cycling of horizontal and vertical vane positions for even heat distribution
- Built-in condensate lift mechanism; lifts to 33-1/2 in.
- Ventilation air intake supported
- Four-speed
- Auto fan
- IT Terminal plug

ACCESSORIES:

- Grille..... (Required ordered separately) PLP-41EAEU
- External Heating Adapter PAC-YU25HT
- Multi-function casement PAC-SJ41TM-E
- Fresh-air intake Duct Flange PAC-SH65OF-E
- High efficiency filterelement (MERV 10) PAC-SH59KF-E
- Simple Remote Controller PAC-YT53CRAU
- Smart ME Controller PAR-U01MEDU
- Wireless Remote Controller PAR-FL32MA
- Wired MA Remote Controller (*4) PAR-40MAA
- Wireless Receiver PAR-SR4LU-E

Model		PLFY-EP48NEMU-E		
Power source		1-phase 208-230 V 60Hz		
Cooling capacity *1	BTU/h	48,000		
	kW	14.1		
	Power input	kW	0.11	
	Current input	A	1.01	
Heating capacity *2	BTU/h	54,000		
	kW	15.8		
	Power input	kW	0.11	
	Current input	A	0.96	
Minimum Circuit Ampacity *		A	1.27	
External finish		Galvanized steel sheet		
External dimension H x W x D		inch	11-3/4 x 33-3/32 x 33-3/32	
		mm	298 x 840 x 840	
Net weight		lbs (kg)	55 (25)	
Decoration panel	Model		PLP-41EAEU	
	External finish			
	Dimension	in.	1-9/16 x 37-13/32 x 37-13/32	
	H x W x D	mm	40 x 950 x 950	
Net weight		lbs (kg)	11 (5)	
Heat exchanger		Cross fin		
FAN	Type x Quantity		Turbo fan x 1	
	External static press.	in.WG	0.000 (208V)	
		Pa	0	
		in.WG	0.000 (230V)	
		Pa	0	
	Motor Type		DC motor	
	Motor output	kW	0.12	
	Driving mechanism		Direct-driven	
	Air flow rate		(Low-Mid2-Mid1-High)	
			cfm	777 - 953 - 1,095 - 1,236
		m ³ /min	22 - 27 - 31 - 35	
Sound pressure level (measured in anechoic room)		(Low-Mid2-Mid1-High)		
		dB <A>	36 - 39 - 42 - 45	
Insulation material		PS		
Air filter		PP honeycomb (long life filter, anti-bacterial type)		
Protection device		Fuse		
Refrigerant control device		LEV		
Connectable outdoor unit		R410A CITY MULTI		
Refrigerant piping diameter	Liquid (R410A)	inch (mm)	3/8 (9.52) Flare	
	Gas (R410A)	inch (mm)	5/8 (15.88) Flare	
Field drain pipe size		inch (mm)	O.D. 1-1/4(32)	

NOTE:
 1. Mitsubishi Electric Sales Canada Inc. (MESCA) supports the use of only MESCA supplied and approved components and accessories for proper functioning of the unit(s). Use of non - MESCA supported components and accessories will affect warranty coverage. MESCA recommends (A) consideration of all applicable design and application parameters and requirements specific to any project; and (B) implementation of any countermeasures needed to address those parameters and requirements, wherever applicable.
 *2. All components of the system must be compatible. For more details on system control compatibility, please refer to Technical Bulletin 100-151 available on our website.
 NOTE: Items denoted in this submittal by an asterisk (*) are provided as specific instances or examples of system compatibility, and are not intended to represent a complete or exhaustive list of compatibility requirements.
 3. Should any person change this document in any manner whatsoever without MESCA's written permission, the document shall be of no force and effect and any change shall be deemed to be a representation and warranty made by that person and not MESCA. That person, and not MESCA, shall assume full responsibility for the consequences of such changes. MESCA assumes no responsibility for any consequences in such cases.

*4. Unit comes standard with built-in 3D i-see sensor. 3D i-see sensor functions only available with PAR-40MAA wired remote controller.

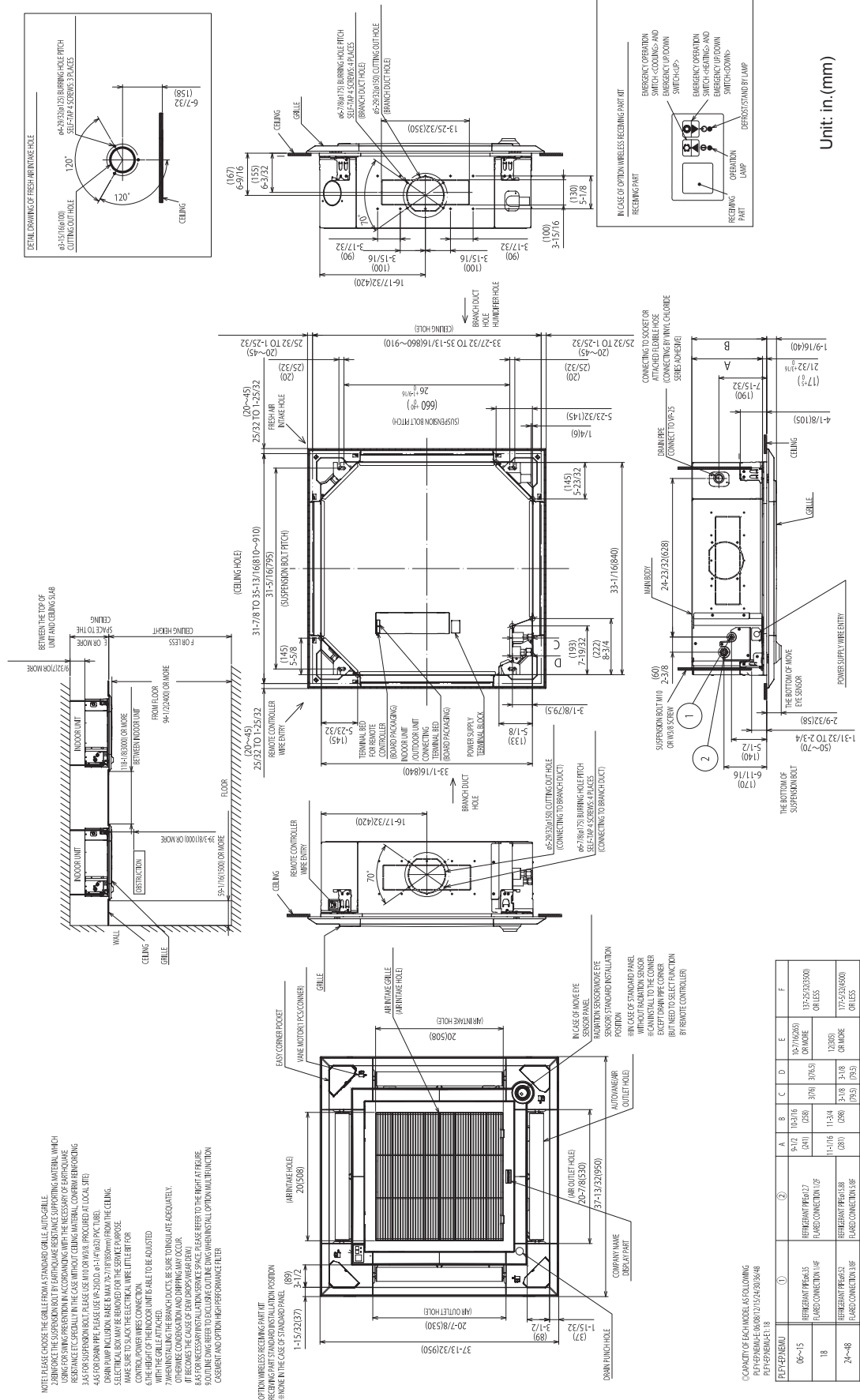
Notes:	*1 Nominal cooling conditions	*2 Nominal heating conditions
	Indoor: 80degF D.B. / 67degF W.B. (26.7degC D.B. / 19.4degC W.B.)	70degF D.B. (21.1degC D.B.)
	Outdoor: 95degF D.B. (35degC D.B.)	47degF D.B. / 43degF W.B. (8.3degC D.B. / 6.1degC W.B.)
	Pipe length: 25 ft. (7.6 m)	25 ft. (7.6 m)
	Level difference: 0 ft. (0 m)	0 ft. (0 m)

Note:
 Ventilation air to be introduced independent of or in series with VRF indoor units. Please refer to local codes for the required ventilation rates specific to the application.

Notes:
 Specifications are subject to change without notice.

*All electrical work shall comply with National (CEC) and local codes and regulations.

Model: PLFY-EP48NEMU-ER1-T – DIMENSIONS



- NOTE: PLEASE CHOOSE THE GRILLE FROM A STANDARD GRILLE AUTO-CRILLE.
2. BEFORE CHOICE THE SUSPENSION ROD BY EARTHQUAKE RESISTANCE SUPPORTING MATERIAL WHICH USING EPOXY RESIN IN ACCORDANCE WITH THE NECESSARY OF EARTHQUAKE RESISTANCE IS CONDUCTED IN THE CASE WITHOUT CEILING MATERIAL COMBINATION BRANCHING 3. 2.56 (101.6) OR MORE (LOCAL TYPE)
4. 4.65 (118.1) OR MORE (BRACKET TYPE) (LOCAL TYPE)
5. 4.65 (118.1) OR MORE (BRACKET TYPE) (LOCAL TYPE)
6. DRINK PUMP PACKAGING (BANK) MAY 70 (1780mm) FROM THE CEILING.
7. ELECTRICAL BOX MAY BE REMOVED FOR THE SERVICE PURPOSE.
8. MAKE SURE TO SLACK THE ELECTRICAL WIRE LITTLE BIT FOR CONTROL POWER WIRES CONNECTION.
9. MAKE SURE TO SLACK THE ELECTRICAL WIRE LITTLE BIT FOR WITH THE GRILLE ATTACHED.
10. THE UNIT ISABLE TO BE ADJUSTED.
11. WHEN INSTALLING THE BRANCH DUCTS, BE SURE TO INSULATE ADEQUATELY.
12. OTHERWISE CONDENSATION AND DRIPPING MAY OCCUR.
13. BE CAREFUL TO CHECK THE INSTALLATION POSITION OF THE UNIT.
14. PLEASE CONFIRM THE INSTALLATION POSITION AND SERVICE SPACE. PLEASE REFER TO THE RIGHT PAGE FOR 9. OUTLINE DIMS REFER TO EXCLUDES OUTLINE DIMS WARNING FALL OPTION MULTIFUNCTION CASEMENT AND OPTION HIGH PERFORMANCE FILTER.

- OPTION WIRELESS RECEIVING PART
- RECEIVING PART STANDARD INSTALLATION POSITION
- NOTE: NONE IN THE CASE OF STANDARD PANEL
- ① NONE IN THE CASE OF STANDARD PANEL
- ② NONE IN THE CASE OF STANDARD PANEL

CAPACITY OF EACH MODEL AS FOLLOWING

PLFY-EP48NEMU-ER1-T (OPTION WIRELESS RECEIVING PART)

PLFY-EP48NEMU	①	②	A	B	C	D	E	F
06~15	REPRESENT PANEL-23 FLARED CONNECTION W/IF	REPRESENT PANEL-17 FLARED CONNECTION W/IF	9-1/2 (238)	10-5/16 (267)	3/16 (5)	3/16 (5)	10-1/2 (267)	13-3/8 (350) OR MORE
18	REPRESENT PANEL-23 FLARED CONNECTION W/IF	REPRESENT PANEL-17 FLARED CONNECTION W/IF	11-1/16 (281)	11-3/4 (298)	3/16 (5)	3/16 (5)	12-1/2 (318)	15-1/8 (391) OR MORE
24~48	REPRESENT PANEL-23 FLARED CONNECTION W/IF	REPRESENT PANEL-17 FLARED CONNECTION W/IF	11-1/16 (281)	11-3/4 (298)	3/16 (5)	3/16 (5)	12-1/2 (318)	15-1/8 (391) OR MORE

Should this document be altered or changed without MESCA's permission, it becomes null and void. MESCA assumes no responsibility for any consequences in such cases.