

Job Name:	Location:
Schedule Reference:	Submitted By:
Submitted To:	Reference: Approval: Construction:
Engineer:	Date: Application:



Images provided for reference purposes only

- HVRF Fan Coil Unit designed specifically for use with CITY MULTI outdoor units
- New stylish and square design with built-in condensate lift mechanism
- Four fan speed settings
- Adjustable vane control through unit controller
- Independent cycling of horizontal and vertical vane positions

- Dual set point functionality^(*)
- 3D i-see SensorTM available^(**)
- Easier to install with ventilation air intake supported
- Lightweight, low profile compact design
- IT Terminal plug

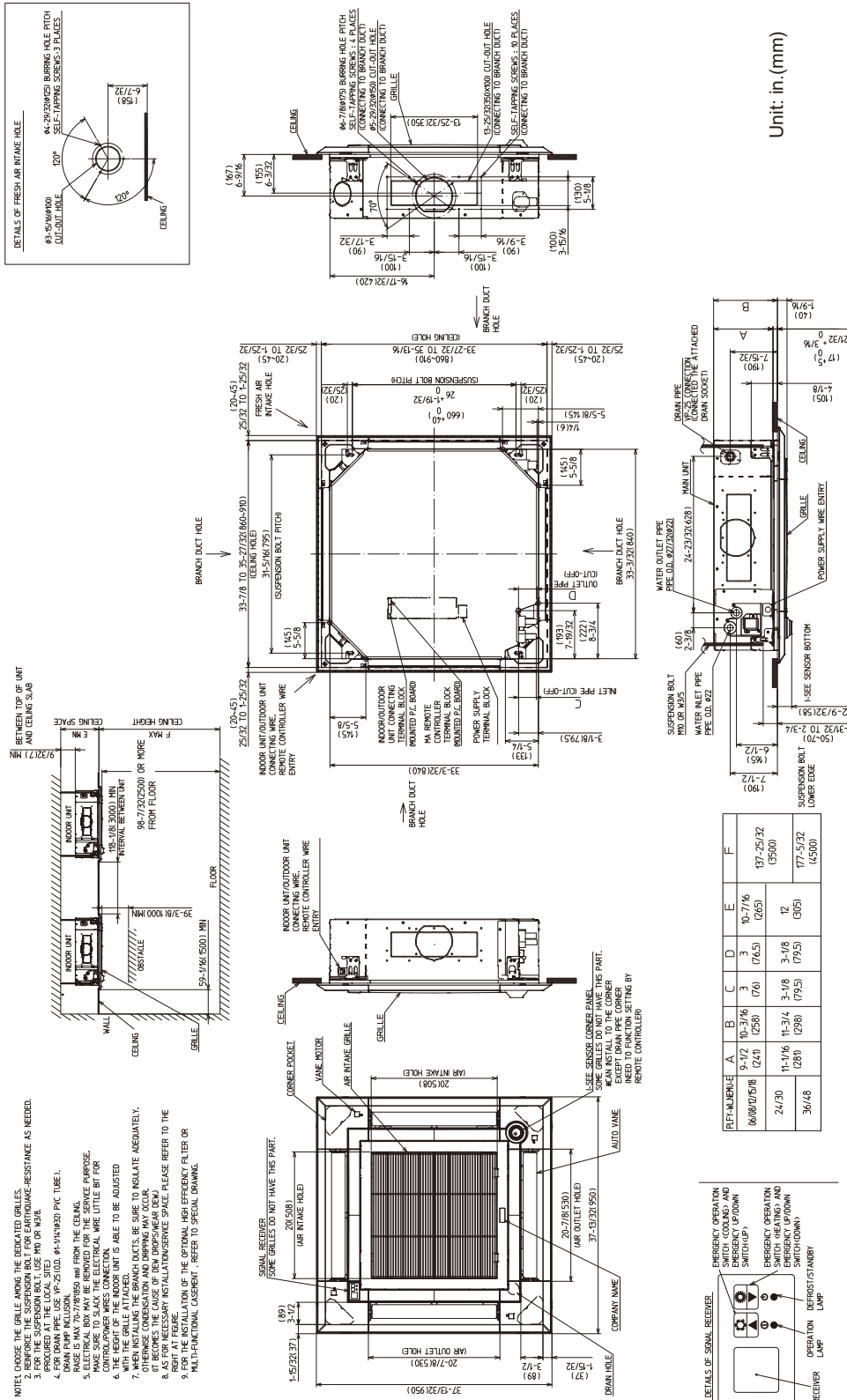
Specifications:

Power source	1-phase 208/230 V 60 Hz			
MCA / MOP	A	0.70 / 15		
Cooling capacity	*1	BTU/h	36,000	
	*1	kW	10.6	
		Power input	kW	0.08
		Current input	A	0.66
Heating capacity	*2	BTU/h	40,000	
	*2	kW	11.7	
		Power input	kW	0.08
		Current input	A	0.60
External finish	Galvanized steel plate			
External dimension H x W x D	inch	11-3/4 x 33-3/32 x 33-3/32		
	mm	298 x 840 x 840		
Net weight	lbs (kg)	51 (23)		
Decoration panel	Model	PLP-41EAEU		
	External finish	MUNSELL (1.0Y 9.2/0.2)		
	Dimension	inch	1-9/16 x 37-13/32 x 37-13/32	
	H x W x D	mm	40 x 950 x 950	
Heat exchanger	Net weight	lbs (kg)	11 (5)	
	Cross fin (Aluminum fin and copper tube)			
FAN	Water Volume	L	2.2	
	Type x Quantity	Turbo fan x 1		
	External static press.	in.WG	0.0	
		Pa	0.0	
	Motor Type	DC motor		
	Motor output	kW	0.12	
	Driving mechanism	Direct-driven		
	Air flow rate	(Low-Mid2-Mid1-High)		
		cfm	671-812-918-1059	
		m3/min	19-23-26-30	
	L/s	317-383-433-500		
Sound pressure level (measured in anechoic room)	(Low-Mid2-Mid1-High)			
	dB <A>	31-35-37-40		
Insulation material	PS			
Air filter	PP honeycomb (long life filter, anti-bacterial type)			
Protection device	Fuse			
Refrigerant control device	-			
Connectable HBC controller	CMB-WP-NU-AA, CMB-WP-NU-AB			
Water piping diameter ^{*3,4}	Connection size	Inlet	mm O.D.	22
		Outlet	mm O.D.	22
	Field pipe size	Inlet	mm I.D. [in I.D.]	30 [1-1/4]
		Outlet	mm I.D. [in I.D.]	30 [1-1/4]
Field drain pipe size	inch (mm)		O.D. 1-1/4 (32)	
Model Number	Optional Accessories	Model Number	Optional Accessories	
PLP-41EAEU	3D i-see Sensor corner panel	PAC-SH65OF-E	Flange for fresh air intake	
PAC-SJ41TM-E	Multi-functional casement	PAR-SR4LU-E	Wireless signal receiver	
PAC-SH59KF-E	High-efficiency filter element	PAC-YU25HT	External heater adapter	
PAC-SJ37SP-E	Air outlet shutter plate (1 set)			

Notes:

- Nominal cooling conditions
Indoor: 80°FDB./67°FWB. (26.7°CDB./19.4°CWB.), Outdoor: 95°FDB. (35°CDB.)
Pipe length: 25 ft. (7.6 m), Level difference: 0 ft. (0 m)
- Nominal heating conditions
Indoor: 70°FDB. (21.1°CDB.), Outdoor: 47°FDB./43°FWB. (8.3°CDB./6.1°CWB.)
Pipe length: 25 ft. (7.6 m), Level difference: 0 ft. (0 m)
- Be sure to install a valve on the water inlet/outlet. Install an automatic air vent.
- Install a strainer (40 mesh or more) on the pipe next to the valve to remove the foreign matters.
- Ventilation air to be introduced independent of or in series with HVRF indoor units. Please refer to local codes for the required ventilation rates specific to the application.
- All components of the system must be compatible.
- Applications should be restricted to comfort heating and cooling only; process/equipment heating and cooling applications are not recommended.
- Mitsubishi Electric Sales Canada Inc. (MESCA) supports the use of only MESCA supplied and approved components and accessories for proper functioning of the unit(s).
- Should any person change this document in any manner whatsoever without MESCA's written permission, the document shall be of no force and effect and any change shall be deemed to be a representation and warranty made by that person and not MESCA. That person, and not MESCA, shall assume full responsibility for the consequences of such changes. MESCA assumes no responsibility for any consequences in such cases.

Indoor Unit Outline and Dimensions:



Unit: in. (mm)

- NOTE: CHOOSE THE GRILLE AMONG THE DEDICATED GRILLES.
- 1. THE GRILLE WITH THE LOWEST RESISTANCE IS RECOMMENDED.
- 2. FOR THE SUSPENSION BOLT, USE M6 OR M8.
- 3. FOR THE SUSPENSION BOLT, USE M6 OR M8.
- 4. DRAM DUMP INJECTION: 1P-25(10) PTC TUBE.
- 5. RANGE IS MAX 70-78(185) AND FROM THE CEILING.
- 6. SELECTING THE RANGE IS REQUIRED FOR THE SERVICE PURPOSE.
- 7. THE RANGE IS MAX 70-78(185) AND FROM THE CEILING.
- 8. THE HEIGHT OF THE INDOOR UNIT IS ABLE TO BE ADJUSTED.
- 9. WHEN INSTALLING THE BRANCH DUCTS, BE SURE TO INSULATE ADEQUATELY.
- 10. OTHERWISE CONDENSATION AND DROPPING MAY OCCUR.
- 11. FOR THE NECESSARY INSTALLATION SERVICE SPACE, PLEASE REFER TO THE RIGHT AT FIGURE.
- 12. FOR THE NECESSARY INSTALLATION SERVICE SPACE, PLEASE REFER TO THE RIGHT AT FIGURE.
- 13. FOR THE NECESSARY INSTALLATION SERVICE SPACE, PLEASE REFER TO THE RIGHT AT FIGURE.
- 14. FOR THE NECESSARY INSTALLATION SERVICE SPACE, PLEASE REFER TO THE RIGHT AT FIGURE.

