

Job Name:

Schedule Reference:

Date:

OUTDOOR VRF SYSTEM FEATURES

- Single-phase outdoor unit with variable refrigerant flow (VRF) zoning technology
- Inverter-driven (variable speed) compressor
- Total refrigerant piping length of 984' (300 m)
- Connects up to 9 indoor units
- Uses CITY MULTI indoor units and Controls Network
- Standard Base Heater included

OPTIONAL PARTS

- Branch Joint (T-Branch) CMY-Y62-G-E
- Header - Four Branch CMY-Y64-G-E
- Header - Eight Branch CMY-Y68-G-E

- Snow/Wind Guard (x2) CM-S-FR-NKMU
- Snow/Wind Guard Rear SG-1-RE
- Snow/Wind Guard Side SG-1-SD
- Snow/Wind Guard Blocker CM-S-BLK-NKMU

Note: Mitsubishi Electric (MESCA) supports the use of only MESCA supplied and approved Snow Guard / Wind Deflectors / Windscreens and accessories for proper functioning of the unit(s). Use of non-MESCA supported Snow Guard / Wind Deflectors / Windscreens and accessories will affect warranty coverage.

Specifications		Model Name
Unit Type		PUMY-HP36NKMU1
Nominal Cooling Capacity	Btu/h *1 (kW)	36,000 (10.6)
Nominal Heating Capacity	Btu/h *2 (kW)	42,000 (12.3)
Operating Temperature Range	Cooling (Outdoor) *3	23°F ~ 115°F (-5°C ~ +46°C) DB
	Heating (Outdoor)	-13°F ~ +59°F (-25°C ~ +15°C) WB
External Dimensions (H x W x D)	In. / mm	52-11/16 x 41-11/32 x 13 (+1) / 1,338 x 1050 x 330 (+25)
External Finish / Colour		Galvanized sheets / Munsell No.3Y 7.8/1.1
Net Weight	Lbs. / kg	273 / 124
Electrical Power Requirements	Voltage, Phase, Hertz	208 / 230V, 1-phase, 60Hz
Minimum Circuit Ampacity (MCA) *	A	36
Maximum Overcurrent Protection	A	44
Piping Diameter (Flared) (In. / mm)	Liquid (High Pressure)	3/8 / 9.52
	Gas (Low Pressure)	5/8 / 15.88
Indoor Unit	Total Capacity	50 to 130% of Outdoor Unit Capacity
	Model / Quantity	P04 to P36 / 1 to 11
Sound Pressure Levels	dB(A) Clg / Htg	49 / 53
Fan		
Type x Quantity (kW)		Propeller Fan x 2 - (0.074 + 0.074)
Airflow Rate	CFM (m3/min)	3,885 (110)
Compressor Operating Range	Cooling	29% to 100%
	Heating	17% to 100%
Compressor Type x Quantity		INVERTER-driven Scroll Hermetic x 1
Compressor Motor Output	kW	2.8
Refrigerant		R410A: 10lbs. + 9oz. (4.8kg)
Lubricant		FV50S (2.3 liters)
High-pressure Protection Device		High pressure Switch, High pressure Sensor
Compressor Protection Device		Compressor thermistor, Overcurrent detection
Inverter Circuit Protection Device		Overcurrent detection, Overheat detection (Heat sink thermistor)
AHRI Ratings Ducted / Non-Ducted	EER	12.6 / 15.0
	SEER	18.3 / 22.3
	COP	NA
	HSPF	11.7 / 12.0

Notes:

*1. Nominal cooling conditions (subject to ISO 15042)
Indoor: 27°C.D.B./19°C.W.B. (81°F.D.B./66°F.W.B.), Outdoor: 35°C.D.B. (95°F.D.B.)
Pipe length: 7.5 m (24-9/16 ft.), Level difference: 0 m (0 ft.)

*2. Nominal heating conditions (subject to ISO 15042)
Indoor: 20°C.D.B. (68°F.D.B.), Outdoor: 7°C.D.B./6°C.W.B. (45°F.D.B./43°F.W.B.)
Pipe length: 7.5 m (24-9/16 ft.), Level difference: 0 m (0 ft.)

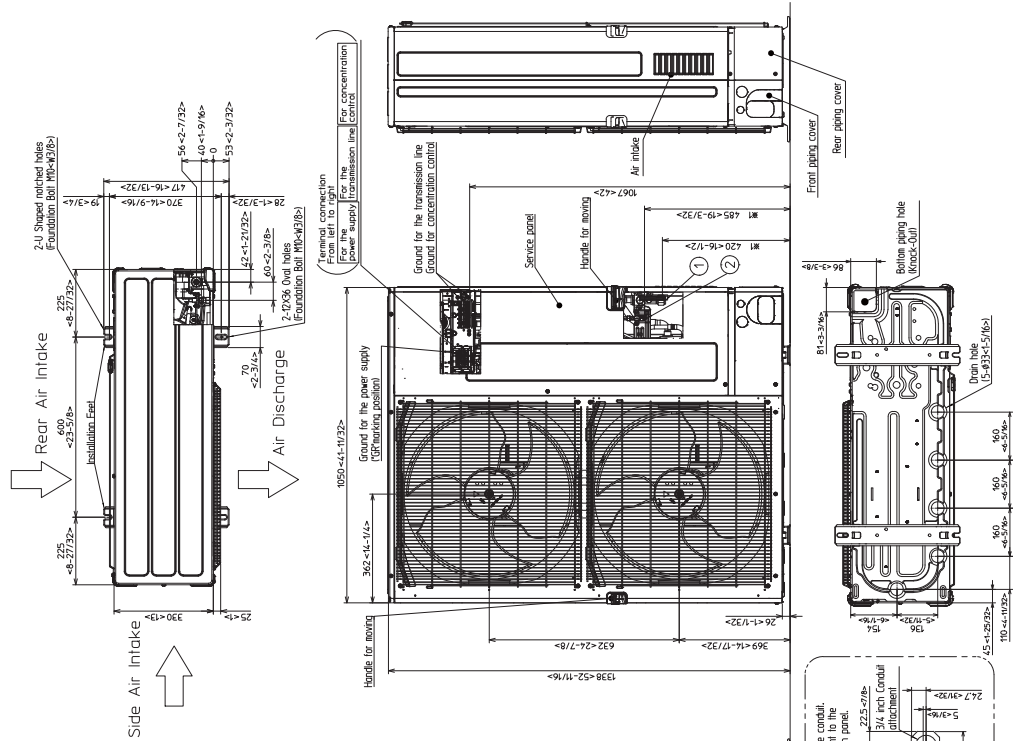
*3. 50 to 115°F (10 to 46°C)D.B.: When connecting PKFY-P06NBMU, PKFY-P08NHMU, PFFY-P06/08/12NEMU, and PFFY-P06/08/12NRMU type indoor unit.

* All electrical work shall comply with National (NEC) and local codes and regulations.

*Should this document be altered or changed without MESCA's permission, it becomes null and void. MESCA assumes no responsibility for any consequences in such cases.

Model: PUMY-HP36NKMU1 - DIMENSIONS

Unit: mm(in)

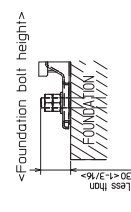


4. PIPING-WIRING DIRECTIONS

Piping and wiring connections can be made from 4 directions: Front, Right, Rear and Below.

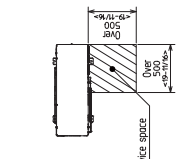
3. FOUNDATION BOLTS

Please secure the unit firmly with 4 foundation (M6x30) bolts and washers must be purchased locally.



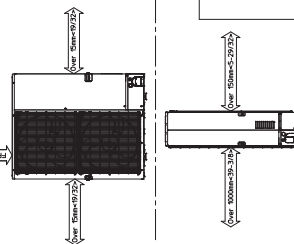
2. SERVICE SPACE

Dimensions of space needed for service access are shown in the below diagram.



1. FREE SPACE (Around the unit)

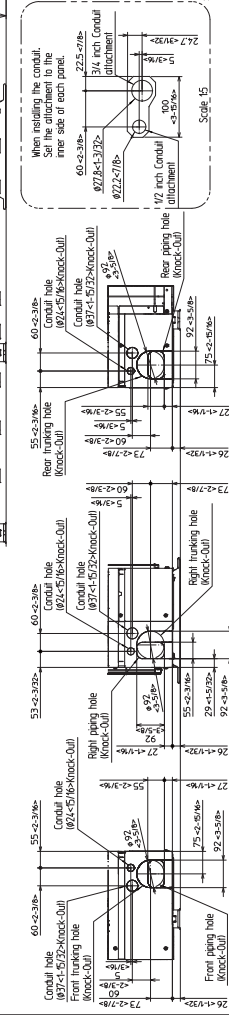
The diagram below shows a basic example. Explanation of particular details are given in the installation manuals etc.



Example of Notes

- ① ... Refrigerant GAS pipe connection (FLARE)ø 15.88 (5/8F)
- ② ... Refrigerant LIQUID pipe connection (FLARE)ø 9.52 (3/8F)
- *1 ... Indication of STOP VALVE connection location.

Piping Knock-Out Hole Details



When installing the conduit, set the attachment to the inner side of each panel.

Scale 1/5

*Should this document be altered or changed without MESCA's permission, it becomes null and void. MESCA assumes no responsibility for any consequences in such cases.

