

Submission Data: PUMY-HP48NKMU2

Air Source Heat Pump System

Job Name:	Location:
Purchaser:	Submitted By:
Submitted To:	Reference: Approval: Construction:
Engineer:	Date: Application:



Images provided for reference purposes only

- Single-phase Outdoor unit with variable refrigerant flow (VRF) zoning technology
- Inverter-driven variable speed compressor
- Uses CITY MULTI indoor units and Control Network
- Compatible with M&P series Indoor Units with Branch Box
- Base pan heater included

Performance:

Power supply		1-phase 208/230 V, 60 Hz				
Indoor type		Non-Ducted	Mixed	Ducted		
Cooling	Capacity Rated ¹	Btu/h	48,000	48,000	48,000	
	Rated power consumption ¹	W	3,665	4,070	4,575	
	Current input (208/230V)	A	17.9/16.2	19.9/18.0	22.3/20.2	
Heating	Capacity Rated 47°F ¹	Btu/h	54,000	54,000	54,000	
	Capacity Max. 17°F ²	Btu/h	54,000	54,000	54,000	
	Capacity Max. 5°F	Btu/h	47,000	47,000	47,000	
	Rated power consumption 47°F ¹	W	3,960	4,400	4,950	
	Current input (208/230V)	A	19.3/17.5	21.5/19.4	24.2/21.8	
Breaker Size		40 A - When power is supplied separately 45 A - When power is supplied from the outdoor unit				
Minimum wire size		8.4(8AWG) - When power is supplied separately 13.3(6AWG) - When power is supplied from the outdoor unit				
Indoor unit connectable	Total capacity	50 to 130% of outdoor unit capacity				
	Model/Quantity ³	CITY MULTI	04 - 54/12			
		Branch box	06 - 36/8			
Sound pressure level (measured in anechoic room)		dB <A>	51/54			
Refrigerant piping diameter	Liquid pipe	inch (mm)	3/8 (ø9.52)			
	Gas pipe	inch (mm)	5/8 (ø15.88)			
Fan	Type × Quantity	Propeller fan × 2				
	Airflow rate	m ³ /min	110			
		cfm	3,885			
	Control, Driving mechanism		DC control			
Motor output		kW	0.074 × 2			
Compressor	Type × Quantity	Scroll hermetic compressor x 1				
	Manufacture	Mitsubishi Electric Corporation				
	Starting method		Inverter			
	Motor output		kW	3.4		
	Lubricant		FV50S 78oz. (2.3L)			
External finish		Galvanized Steel Sheet <Munsell 3Y 7.8/ 1.1>				
External dimension HxWxD	mm		1,338 × 1,050 × 330 (+25)			
	inch		52-11/16 × 41-11/32 × 13 (+1)			
Protection devices	High pressure protection		High pressure switch			
	Inverter circuit (COMP./FAN)		Overcurrent detection, Overheat detection (Heat sink thermistor)			
	Compressor protection		Compressor thermo, Overcurrent detection			
	Fan motor protection		Overheating/Voltage protection			
Refrigerant	Type × original charge		R410A 10 lbs. 9 oz. (4.8kg)			
	Control		Linear Expansion Valve			
Net weight		lb (kg)	278 (126)			
Heat exchanger		Cross fin and tube				
HIC circuit (HIC: Heat Inter-Changer)		HIC circuit				
Operating Temperature Range		Cooling		D.B. 23 to 115°F [D.B.-5 to 46°C] ^{4,5,6}		
		Heating		D.B.-13 to 70°F [D.B.-25 to 21°C]		
PUMY-HP48NKMU2		Non-ducted	Ducted (Mid-static)	Mixed (Mid-static)	Ducted (High-static)	Mixed (High-static)
Efficiency	EER2	13.1	10.5	11.8	10.4	11.75
	SEER2	23	16	19.5	14.7	18.85
Non-ducted / Mixed (Mid-static) / Ducted (Mid-static) / Mix (High static) / Ducted (High static)	HSPF (Region IV)	11.5	9.5	10.5	8.8	10.15
	HSPF (Region V)	9.8	8.3	9.05	8.3	9.05

NOTES:

1 Rating conditions Cooling Indoor : D.B. 80°F/W.B. 67 °F [D.B.26.7°C/W.B. 19.4°C]
Outdoor : D.B. 95°F [D.B. 35.0°C]

Heating Indoor : D.B. 70°F [D.B. 21.1°C]

Outdoor : D.B. 47°F/W.B. 43°F [D.B. 8.3°C/W.B. 6.1°C]

2 Conditions Heating Indoor : D.B. 70°F [D.B. 21.1°C]

Outdoor : D.B. 17°F/W.B. 15°F [D.B. -8.3°C/W.B. -9.4°C]

3 It cannot be connected mixed CITY MULTI indoor unit and branch box indoor unit.

4 D.B. 5 to 115°F [D.B. -15 to 46°C], when an optional Air Outlet Guide is installed.

However, this condition does not apply to the indoor units listed in #5.

5 50 to 115°F (10 to 46°C) D.B.: When connecting PKFY-P04/06/08/12NLMU, PFFY-P06/08/12NEMU, and PFFY-P06/08/12NRMU type indoor unit.

6 When the temperature is below D.B. 50°F [D.B. 10°C] with branch box system, noise could potentially occur.

Note: Refer to the indoor unit's service manual for the indoor units specification.

PUMY-HP48NKMU2	Capacity (Btu/hr)	COP
NEEP	-25°C / -13°F	-25°C / -13°F
Non-ducted	42,600	1.5
Mixed	42,600	1.44
Ducted	42,600	1.4

Piping

Liquid Pipe Size O.D. (Flared)	In. [mm]	3/8 [9.52]
Gas Pipe Size O.D. (Flared)	In. [mm]	5/8 [15.88]
Total Piping Length when using Branch Box	Ft. [m]	492 [150]
Total Piping Length without Branch Box	Ft. [m]	984 [300]
Maximum Height Difference ^A , ODU above IDU	Ft. [m]	164 [50]
Maximum Height Difference ^A , ODU below IDU	Ft. [m]	131 [40]
Maximum Height Difference ^A , between branch boxes	Ft. [m]	49 [15]
Maximum Height Difference between IDU and IDU without branch box	Ft. [m]	49 [15]
Maximum Piping Length between ODU and Branch Box	Ft. [m]	180 [55]
Farthest Piping Length from ODU to IDU with Branch Box	Ft. [m]	262 [80]
Farthest Piping Length from ODU to IDU without Branch Box	Ft. [m]	492 [150]
Farthest Piping Length after Branch Box	Ft. [m]	82 [25]
Total Piping Length between Branch Boxes and IDU	Ft. [m]	311 [95]
Maximum Number of Bends for IDU	Ft. [m]	15

^AA Branch box should be placed within the level between the outdoor unit and indoor units.

The outdoor unit is lower: 131ft [40m] or less (98ft [30.] or less if PKFY-P04/06/08/12NLMU, PFFY-P06/08/12NEMU, and PFFY-P06/08/12NRMU are included.)

Optional Accessories	Description	Model No.
Branch Box	3 Port Branch Box	PAC-MKA32BC
	3 Port Branch Box	PAC-MKA33BC
	5 Port Branch Box	PAC-MKA52BC
	5 Port Branch Box	PAC-MKA53BC
Branch Joint	T-Branch	CMY-Y62-G-E
Header	4 Branch	CMY-Y64-G-E
	8 Branch	CMY-Y68-G-E
Centralized Drain Pan	Central Drain Pan	PAC-SH97DP-E
Control/Service Tool	Maintenance Tool Interface	PAC-USCMS-MN-1
Distribution pipe	Brazed Connection	MSDD-50BR-E
	Flare Connection	MSDD-50AR-E
Drain Socket	Drain Socket	PAC-SG60DS-E
Port Adapter	Adaptor: 1/2" x 3/8"	MAC-A455JP-E
	Adaptor: 1/2" x 5/8"	MAC-A456JP-E
	Adaptor: 3/8" x 1/2"	MAC-A454JP-E
	Adaptor: 3/8" x 5/8"	PAC-SG76RJ-E
Snow/Wind Guard	Front	CM-S-FR-NKMU (two pieces are required)
Snow/Wind Guard	Rear	SG-1-RE
Snow/Wind Guard	Side	SG-1-SD
Snow/Wind Guard	Blocker	CM-S-BLK-NKMU

Note: Mitsubishi Electric (MESCA) supports the use of only MESCA supplied and approved Snow Guard / Wind Deflectors / Windscreens and accessories for proper functioning of the unit(s).

Use of non-MESCA supported Snow Guard / Wind Deflectors / Windscreens and accessories will affect warranty coverage.

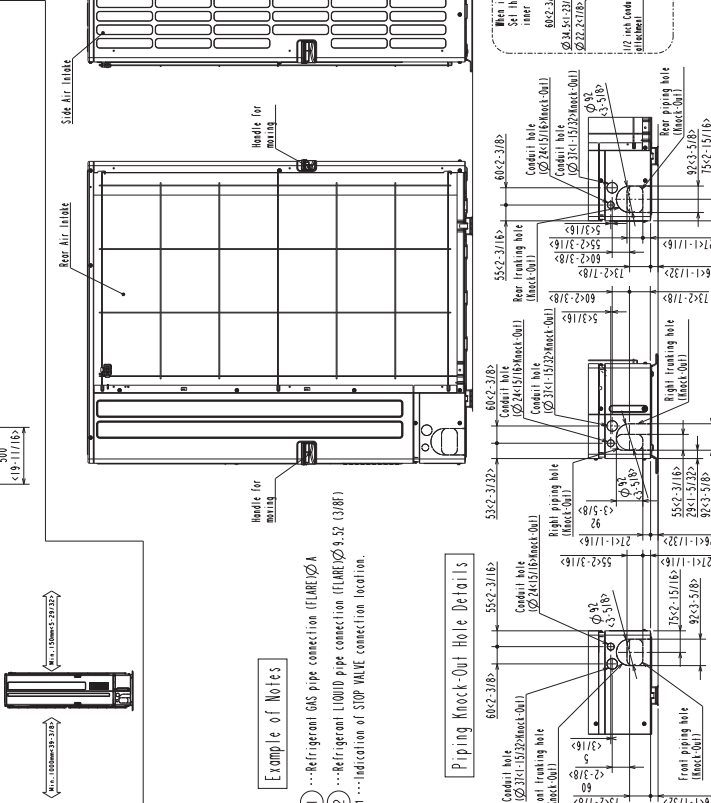
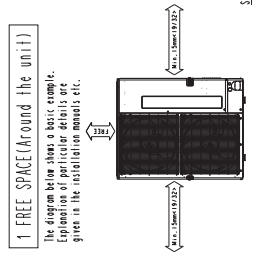
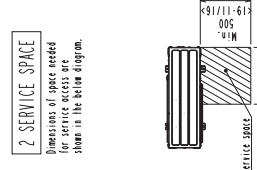
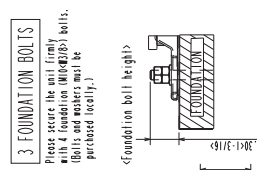
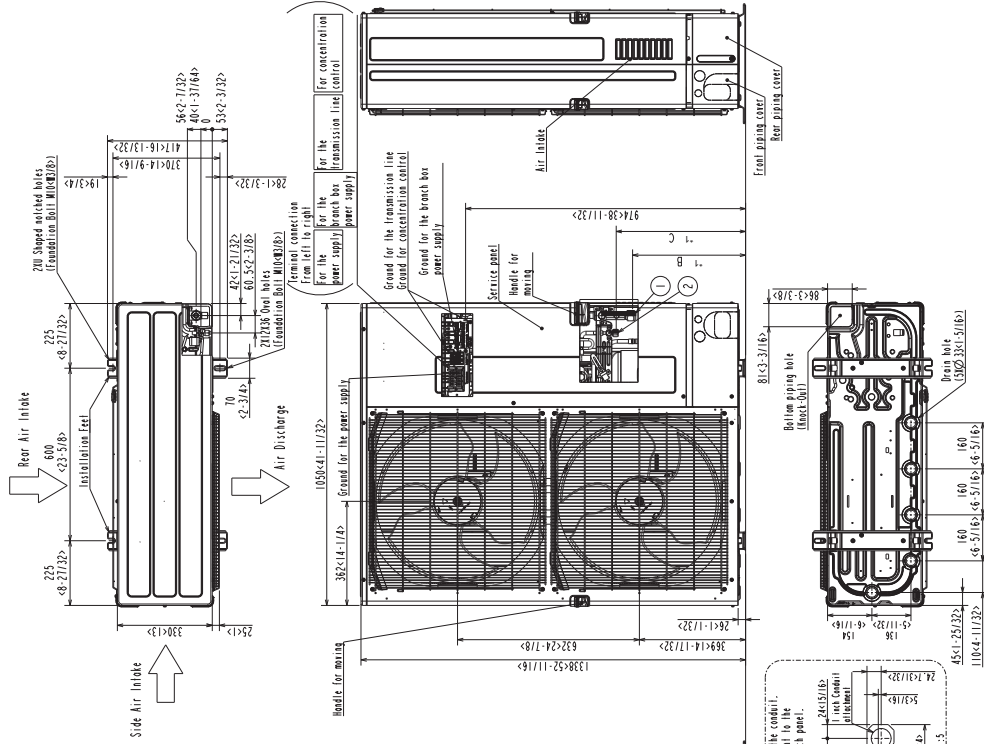
Should this document be altered or changed without MESCA's permission, it becomes null and void. MESCA assumes no responsibility for any consequences in such cases

All electrical work shall comply with National (CEC) and local codes and regulations.

Notes:

Outdoor Unit Outline and Dimensions:

Unit: mm(in)



Example of Notes

- ① Refrigerant GAS pipe connection (FLARE) $\varnothing A$
- ② Refrigerant LIQUID pipe connection (FLARE) $\varnothing B$ (3/8")
- * Indication of STOP VALVE connection location.

MODELS	A	B	C
PUMY-HP36NKMU2	15.88(5/8F)	426<16-25/32>	485<19-3/32>
PUMY-HP42NKMU2	19.05(3/4F)	393<15-15/32>	450<17-23/32>
PUMY-HP48NKMU2	15.88(5/8F)	426<16-25/32>	485<19-3/32>

