

Job Name:

Schedule Reference:

Date:

OUTDOOR VRF SYSTEM FEATURES

- Single-phase outdoor unit with variable refrigerant flow (VRF) zoning technology
- Inverter-driven (variable speed) compressor
- Total refrigerant piping length of 984' (300 m)
- Connects up to 9 indoor units
- Uses CITY MULTI indoor units and Controls Network
- Low ambient cooling operation down to -40°C available as an option(*5 *6)

UNIT OPTION

- Standard Model.....PUMY-P36NKMU3
- Sea Coast (-BS) Model.....PUMY-P36NKMU3-BS

OPTIONAL PARTS

- Branch Joint (T-Branch) CMY-Y62-G-E
- Header - Four Branch CMY-Y64-G-E
- Header - Eight Branch CMY-Y68-G-E
- Base Heater PAC-SJ20BH-E
- Snow/Wind Guard (x2) CM-S-FR-NKMU
- Snow/Wind Guard Rear SG-1-RE
- Snow/Wind Guard Side SG-1-SD
- Snow/Wind Guard Blocker CM-S-BLK-NKMU

Note: Mitsubishi Electric (MESCA) supports the use of only MESCA supplied and approved Snow Guard / Wind Deflectors / Windscreens and accessories for proper functioning of the unit(s). Use of non-MESCA supported Snow Guard / Wind Deflectors / Windscreens and accessories will affect warranty coverage.

Specifications		Model Name
Unit Type		PUMY-P36NKMU3 (-BS)
Nominal Cooling Capacity	Btu/h *1 (kW)	36,000 (10.6)
Nominal Heating Capacity	Btu/h *2 (kW)	42,000 (12.3)
Operating Temperature Range	Cooling (Outdoor) *3 *4	23°F ~ 115°F (-5°C ~ +46°C) DB
	Heating (Outdoor)	-13°F ~ +59°F (-25°C ~ +15°C) WB
External Dimensions (H x W x D)	In. / mm	52-11/16 x 41-11/32 x 13 (+1) / 1,338 x 1050 x 330 (+25)
External Finish / Colour		Galvanized sheets (+power coating for -BS type) / Munsell No.3Y 7.8/1.1
Net Weight	Lbs. / kg	267 / 121
Electrical Power Requirements	Voltage, Phase, Hertz	208 / 230V, 1-phase, 60Hz
Minimum Circuit Ampacity (MCA) *	A	29
Maximum Overcurrent Protection	A	44
Piping Diameter (Flared) (In. / mm)	Liquid (High Pressure)	3/8 / 9.52
	Gas (Low Pressure)	5/8 / 15.88
Indoor Unit	Total Capacity	50 to 130% of Outdoor Unit Capacity
	Model / Quantity	P04 to P36 / 1 to 11
Sound Pressure Levels	dB(A) Clg / Htg	49 / 53
Fan		
Type x Quantity (kW)		Propeller Fan x 2 - (0.074 + 0.074)
Airflow Rate	CFM (m3/min)	3,885 (110)
Compressor Operating Range	Cooling	29% to 100%
	Heating	24% to 100%
Compressor Type x Quantity		INVERTER-driven Scroll Hermetic x 1
Compressor Motor Output	kW	2.8
Refrigerant		R410A: 10lbs. + 9oz. (4.8kg)
Lubricant		FV50S (2.3 liters)
High-pressure Protection Device		High pressure Switch, High pressure Sensor
Compressor Protection Device		Compressor thermistor, Overcurrent detection
Inverter Circuit Protection Device		Overcurrent detection, Overheat detection (Heat sink thermistor)
AHRI Ratings Ducted / Non-Ducted	EER	12.6 / 15.0
	SEER	18.3 / 22.3
	COP	NA
	HSPF	11.20 / 12.0
Blue Fin Anti-corrosion Protection: Cellulose- and polyurethane-resin coating treatment applied to condenser coil that protects it from air contaminants; ≥1µm thick; Salt Spray/Test Method - no unusual rust development to 960 hours.		

Notes:

- *1. Nominal cooling conditions (subject to ISO 15042)
Indoor: 27°C D.B./19°C W.B. (81°F D.B./66°F W.B.), Outdoor: 35°C D.B. (95°F D.B.)
Pipe length: 7.5 m (24-9/16 ft.), Level difference: 0 m (0 ft.)
- *2. Nominal heating conditions (subject to ISO 15042)
Indoor: 20°C D.B. (68°F D.B.), Outdoor: 7°C D.B./6°C W.B. (45°F D.B./43°F W.B.)
Pipe length: 7.5 m (24-9/16 ft.), Level difference: 0 m (0 ft.)
- *3. 50 to 115°F (10 to 46°C) D.B.: When connecting PKFY-P06NBMU, PKFY-P08NHMU, PFFY-P06/08/12NEMU, and PFFY-P06/08/12NRMU type indoor unit.
- *4. 5 to 115°F (-15 to 46°C) D.B.: When using an optional front wind baffle.
However, this condition does not apply to the indoor units listed in *3.
- *5. For -40°C cooling ONLY operation a low ambient kit is required along with a front wind deflector. Heating operation is not permitted.
- *6. For Low-Ambient Cooling operation, dip switch SW 3 #1 must be switched to the ON position in the indoor unit to disable heating mode.

Specifications are subject to change without notice.

* All electrical work shall comply with National (NEC) and local codes and regulations.

*Should this document be altered or changed without MESCA's permission, it becomes null and void. MESCA assumes no responsibility for any consequences in such cases.

Model PUMY-P36NKMU3(-BS) - DIMENSIONS

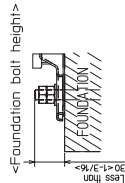
Unit: mm(in)

4. PIPING-WIRING DIRECTIONS

Piping and wiring connections can be made from 4 directions: Front, Right, Rear and Below.

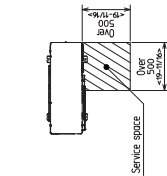
3. FOUNDATION BOLTS

Please secure the unit firmly with 4 foundation (M10-M20) bolts. Bolts and washers must be purchased locally.



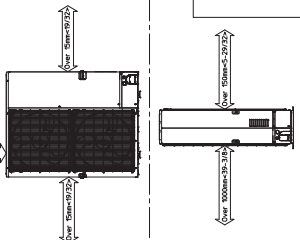
2. SERVICE SPACE

Dimensions of space needed for service access are shown in the below diagram.



1. FREE SPACE (Around the unit)

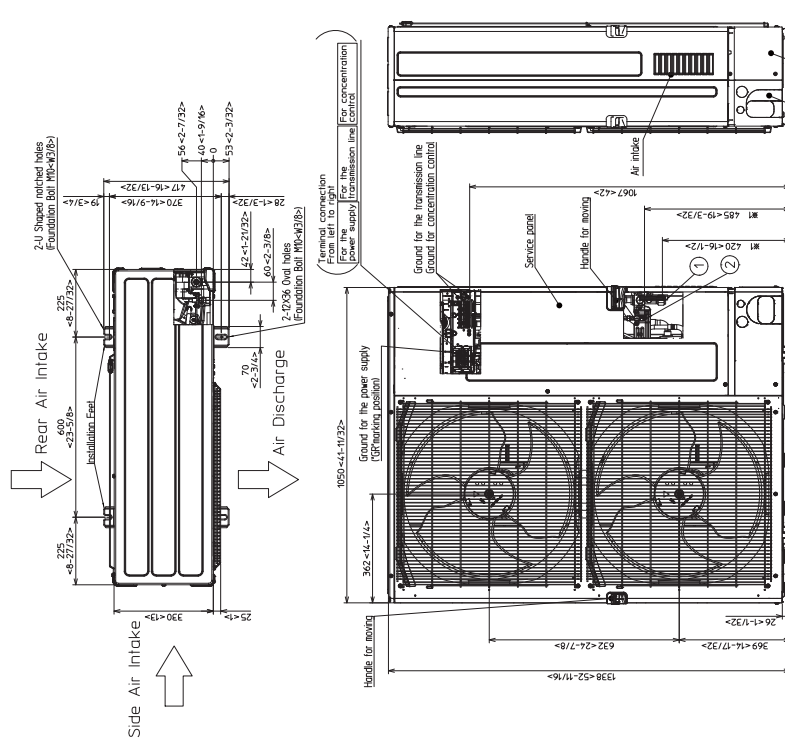
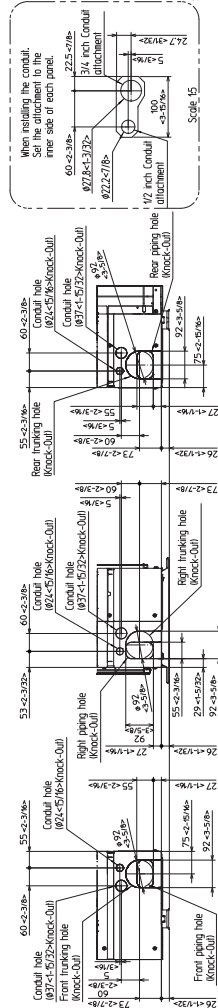
The diagram below shows a basic example. Explanation of particular details are given in the installation manuals etc.



Example of Notes

- ① ... Refrigerant GAS pipe connection (FLARE)ø 15.88 (5/8F)
- ② ... Refrigerant LIQUID pipe connection (FLARE)ø 9.52 (3/8F)
- *1 ... Indication of STOP VALVE connection location.

Piping Knock-Out Hole Details



*Should this document be altered or changed without MESCA's permission, it becomes null and void. MESCA assumes no responsibility for any consequences in such cases.

