

Job Name:

Schedule Reference:

Date:

### OUTDOOR VRF SYSTEM FEATURES

- Single-phase outdoor unit with variable refrigerant flow (VRF) zoning technology
- Inverter-driven (variable speed) compressor
- Total refrigerant piping length of 492' (150 m)
- Connects up to 12 indoor units
- Uses CITY MULTI indoor units and Controls Network
- Low ambient cooling operation down to -40°C available as an option (\*5)

### UNIT OPTION

- Standard Model.....PUMY-P60NKMU1
- Sea Coast (-BS) Model.....PUMY-P60NKMU1-BS

### OPTIONAL PARTS

- Branch Joint (T-Branch) ..... CMY-Y62-G-E
  - Header - Four Branch ..... CMY-Y64-G-E
  - Header - Eight Branch ..... CMY-Y68-G-E
  - Base Heater ..... PAC-SJ20BH-E
  - Wind Deflectors ..... (\*4) ..... See Separate Submittal
  - Port adaptor \*\* ..... ( 3/8" x 1/2" ) ..... MAC-A454JP-E
  - Port adaptor \*\* ..... ( 1/2" x 5/8" ) ..... MAC-A456JP-E
  - Port adaptor \*\* ..... ( 1/4" x 3/8" ) ..... PAC-493PI
  - Port adaptor \*\* ..... ( 5/8" x 3/4" ) ..... PAC-SG75RJ-E
  - Port adaptor \*\* ..... ( 3/8" x 5/8" ) ..... PAC-SG76RJ-E
- \*\*Check availability lead time and pricing as required.

**Note: Mitsubishi Electric (MESCA) supports the use of only MESCA supplied and approved Snow Guard / Wind Deflectors / Windscreens and accessories for proper functioning of the unit(s). Use of non-MESCA supported Snow Guard / Wind Deflectors / Windscreens and accessories will affect warranty coverage.**

Specifications		Model Name
Unit Type		PUMY-P60NKMU1 (-BS)
Nominal Cooling Capacity (208/230V)	Btu/h *1	60,000
Nominal Heating Capacity (208/230V)	Btu/h *2	66,000
Operating Temperature Range	Cooling (Outdoor) *3 *4	23°F ~ 115°F (-5°C ~ +46°C) DB
	Heating (Outdoor)	-13°F ~ +59°F (-25°C ~ +15°C) WB
External Dimensions (H x W x D)	In. / mm	52-11/16 x 41-11/32 x 13 (+1) / 1,338 x 1050 x 330 (+25)
External Finish / Colour		Galvanized sheets (+power coating for -BS type) / Munsell No.3Y 7.8/1.1
Net Weight	Lbs. / kg	306 / 139
Electrical Power Requirements	Voltage, Phase, Hertz	208 / 230V, 1-phase, 60Hz
Minimum Circuit Ampacity (MCA) *	A	36
Maximum Overcurrent Protection	A	42
Piping Diameter (Flared) (In. / mm)	Liquid (High Pressure)	3/8 / 9.52
	Gas (Low Pressure)	3/4 / 19.05
Indoor Unit	Total Capacity	50 to 130% of Outdoor Unit Capacity
	Model / Quantity	P06 to P72 / 1 to 12
Sound Pressure Levels	dB(A) Clg / Htg	58 / 59
Fan		
Type x Quantity (kW)		Propeller Fan x 2 - (0.200 + 0.200)
Airflow Rate	CFM	4,879
Compressor Operating Range	Cooling	36% to 100%
	Heating	22% to 100%
Compressor Type x Quantity		INVERTER-driven Scroll Hermetic x 1
Compressor Motor Output	kW	4.1
Refrigerant		R410A: 11lbs. + 4oz. (5.1 kg)
Lubricant		FV50S (2.3 liters)
High-pressure Protection Device		High pressure sensor, High pressure switch 601 psi (4.15 MPA)
Compressor / Fan Protection Device		Discharge thermo protection, Over-current protection
Inverter Protection Device		Over-heat protection, Over-current protection
AHRI Ratings Ducted (06 + 06 + 06 + 18 + 24) / Non-Ducted (24 + 24 + 06 + 06)	EER	11.1 / 12.5
	SEER	17.0 / 18.6
	COP	3.70 / 3.50
	HSPF	10.7 / 11.4
<b>Blue Fin Anti-corrosion Protection:</b> Cellulose- and polyurethane-resin coating treatment applied to condenser coil that protects it from air contaminants; ≥1µm thick; Salt Spray Test Method - no unusual rust development to 960 hours.		

- NOTES:** \*1 Cooling I Indoor 80°F (26.7°C) DB / 67°F (19°C) WB; Outdoor 95°F (35°C) DB  
 \*2 Heating I Indoor 70°F (21.1°C) DB, Outdoor 47°F (8.3°C) DB / 43°F (6°C) WB  
 \*3. When connecting PKFY-P06NBMU and PKFY-P08NHMU type Indoor unit, then range is 50°F~ 115°F (10°C ~ 46°C) D.B.  
 \*4. When using an optional Front Wind Deflector, then range is 5°F ~ 115°F (-15°C ~ 46°C) D.B. However, this condition does not apply to Indoor units listed in \*3  
 \*5. For -40°C cooling operation a low ambient kit is required along with a front wind deflector. Heating operation is not affected by the ultra-low ambient kit.

NOTES:

\* All electrical work shall comply with National (CEC) and local codes and regulations.

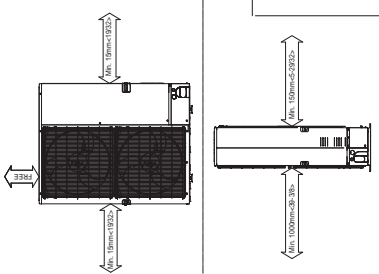
\*Should this document be altered or changed without MESCA's permission, it becomes null and void. MESCA assumes no responsibility for any consequences in such cases.

# Model: PUMY-P60NKMU1 (-BS) - DIMENSIONS

Unit: mm(in)

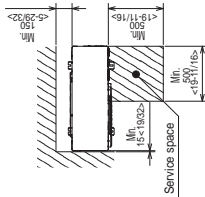
### 1 FREE SPACE (Around the unit)

The diagram below shows a basic example. Explanation of particular details are given in the installation manuals etc.



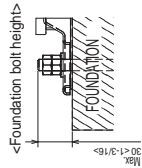
### 2 SERVICE SPACE

Dimensions of space needed for service access are shown in the below diagram.



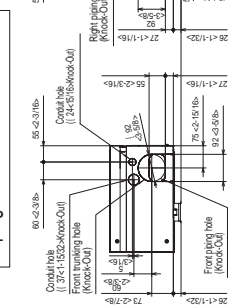
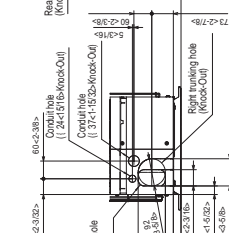
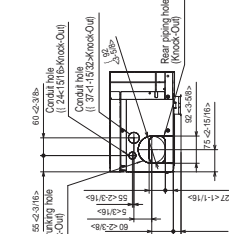
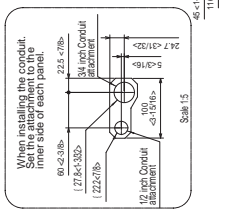
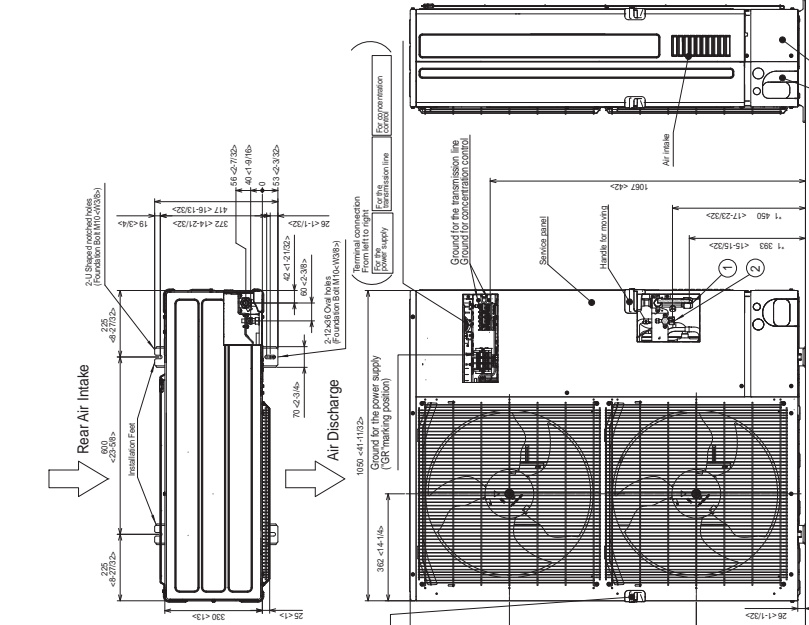
### 3 FOUNDATION BOLTS

Please secure the unit firmly with 4 foundation (M10xW3/8") bolts. (Bolts and washers must be purchased locally)



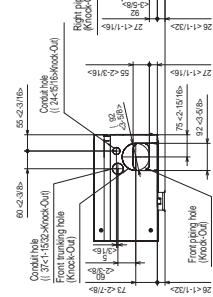
### 4 PIPING-WIRING DIRECTIONS

Piping and wiring connections can be made from 4 directions: FRONT, Right, Rear and Below.



- Example of Notes**
- ① Refrigerant GAS pipe connection (FLARE) | R1 (R4F)
  - ② Refrigerant LIQUID pipe connection (FLARE) | R2 (R8F)
  - ③ Indication of STOP VALVE connection location.

### Piping Knock-Out Hole Details



Should this document be altered or changed without MESCA's permission, it becomes null and void. MESCA assumes no responsibility for any consequences in such cases.



for a greener tomorrow

