

SUBMITTAL DATA: SLZ-KF09NA1 & SUZ-KA09NAH2-MX
9,000 BTU/H CEILING-CASSETTE HEAT PUMP SYSTEM

Job Name:	Location:	Date:
Purchaser:	Engineer:	
Submitted to:	For <input type="checkbox"/> Reference <input type="checkbox"/> Approval <input type="checkbox"/> Construction	
System Designation:	Schedule No.:	


ACCESSORIES:

- Grille (SLP-18FAEU - Ordered separate) (w/3D i-see sensor)
- Wired Remote Sensor (PAC-SE41TS-E)
- Wire for Remote on/off with CN32 connector (PAC-715AD)
- Connector and wire for Operation status/error using CN51 (PAC-725AD)
- Connector of CN32 (remote on/off) (PAC-SE55RA-E)
- Connector cable for remote display (PAC-SA88HA-EP)

Optional Controls

- Wired Remote Controller PAR-41MAA
- Simple MA Remote Controller (PAC-YT53CRAU-J)
- Interface Module (RMF-CA200)
- System Control Interface (MAC-334IF-E)
- Wireless Remote (PAR-SL100A-E)(Requires PAR-SF9FA-E)
- Backlit, Wall-mounted, Wireless Controller (MHK2)

Energy Efficiency	SEER / SEER2	22.4 / 24.0
	EER / EER2	13.4 / 13.4
	HSPF IV / V	8.7 / 6.9

Cooling	Rated Capacity	Btu/h	9000	
	Capacity Range	Btu/h	3600-9000	
	Total input	W	670	
		EER	13.4	
	Energy Efficiency	SEER	22.4	
	Moisture Removal	Pints/h	1	
Sensible Heat Factor			0.87	
Heating at 47°F	Rated Capacity	Btu/h	11000	
	Capacity Range	Btu/h	4010-12000	
	Total input	W	810	
Heating at 17°F	Rated Capacity	Btu/h	6900	
	Rated Total input	W	810(940)	
	Maximum Capacity	Btu/h	6900	
	Maximum Total Input	W	810(940)	
Power supply	Voltage, Phase, Cycle		208/230V, 1-phase, 60Hz	
Voltage	Indoor - Outdoor S1-S2		AC 208/230V	
	Indoor - Outdoor S2-S3		DC12-24V	
	Indoor - Remote controller		DC12V	
Indoor unit	MCA (*)	A	0.25	
	Fan Motor	F.L.A	0.2	
	Fan Motor Output	W	50	
	Air fow (Lo-Mid-Hi)	DRY(CFM)	230-265-300	
		WET(CFM)	207-239-270	
	External Static Pressure	in WG	0	
	Sound Pressure Level (Lo-Mid-Hi)	dB (A)	25-28-31	
	External Finish Color	Munsell 1.0Y 9.2/0.2		
	Dimensions	W: in	22-7/16	
		D: in	22-7/16	
		H: in	8-3/16	
	Weight Unit	lbs	30.6	
	Field Drainpipe O.D.	in	1-1/4 [Mechanical lift 33]	
Refrigerant pipe Gas	in	3/8		
Refrigerant pipe Liquid	in	1/4		

Outdoor unit	MCA (*)	A	9	
	MOCP (*)	A	15	
	Fan Motor	F.L.A.	0.5	
	Compressor	Model(Type)	DC INVERTER-driven	
		R.L.A.	6.2	
		L.R.A.	7.7	
	Air fow (Cooling/Heating)	CFM	(1,229/1,172)	
	Refrigerant Control	Linear Expansion Valve		
	Defrost Method	Reverse Cycle		
	SPL (Cooling)	dB (A)	48	
	SPL (Heating)	dB (A)	50	
	External Finish Color	Munsell No.3Y 7.8/1.1		
	Dimension	W: in	31-1/2	
D: in		11-1/4		
H: in		21-5/8		
Weight	lbs	81		
Remote Controller	Type	Wired Remote Controller		
Refrigerant	Type	R410A		
	Charge	lbs, oz	2,5	
	Oil	Type(Fl.oz.)	FV50S(9.1)	
Refrigerant Pipe	Gas side O.D.	in	3/8	
	Liquid side O.D.	in	1/4	
	Height Difference (Max)	ft	40	
	Length (Max.)	ft	65	
Connection Method	Indoor/Outdoor	Flared/Flared		
Operation Guarantee	Cooling	°F	14 - 115	
	Heating	°F	-4 - 75	

NOTES : *1.Rating conditions (cooling)-Indoor : D.B. 26.7°C (80°F), W.B. 19.4°C (67°F) Outdoor : D.B. 35°C (95°F), W.B. 23.9°C (75°F)
 (heating)-Indoor : D.B. 21.1°C (70°F), W.B. 15.6°C (60°F) Outdoor : D.B. 8.3°C (47°F), W.B. 6.1°C (43°F)
 *2.Rating conditions(heating)-Indoor : D.B. 21.1°C (70°F), W.B. 15.6°C (60°F) Outdoor : D.B. -8.3°C (17°F), W.B. -9.4°C (15°F)

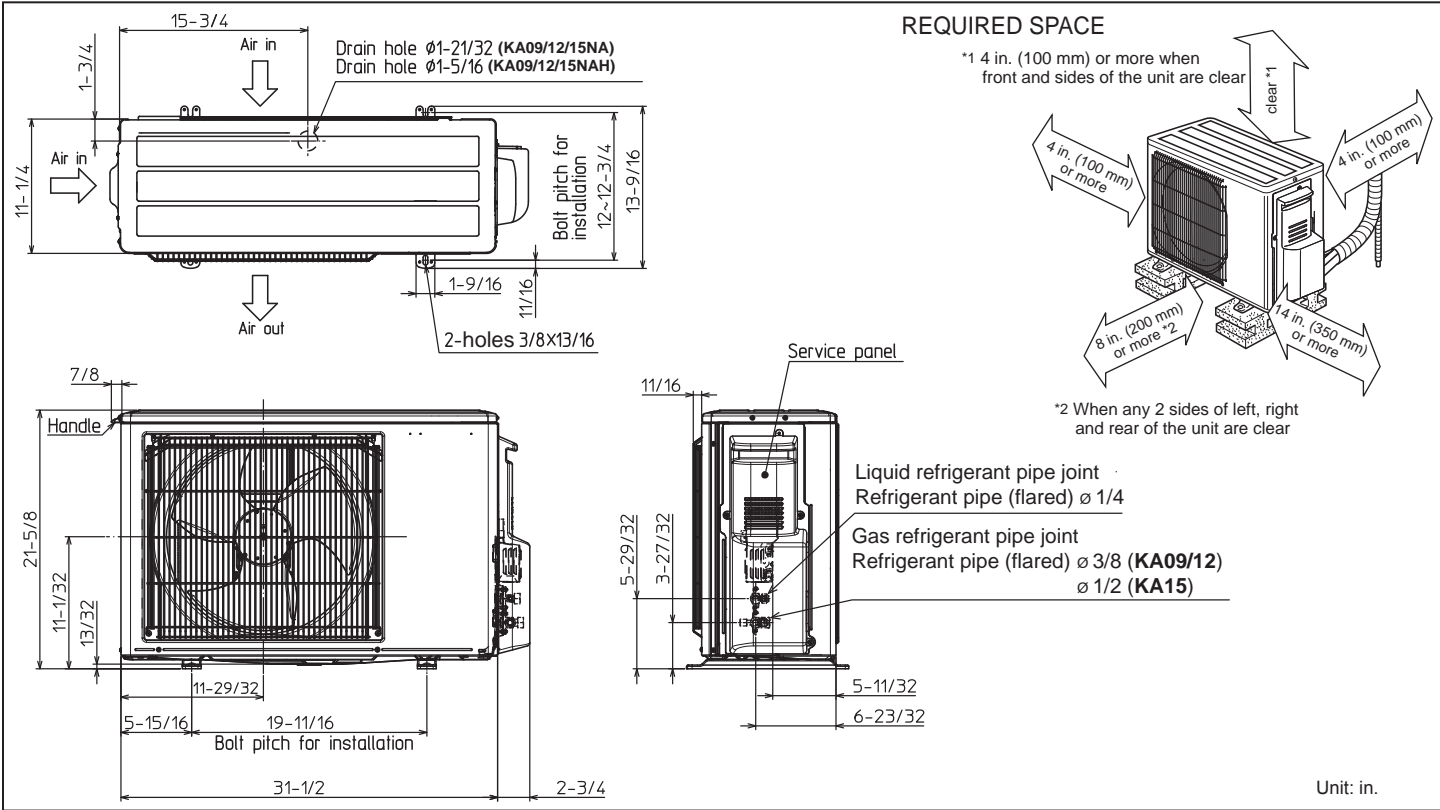
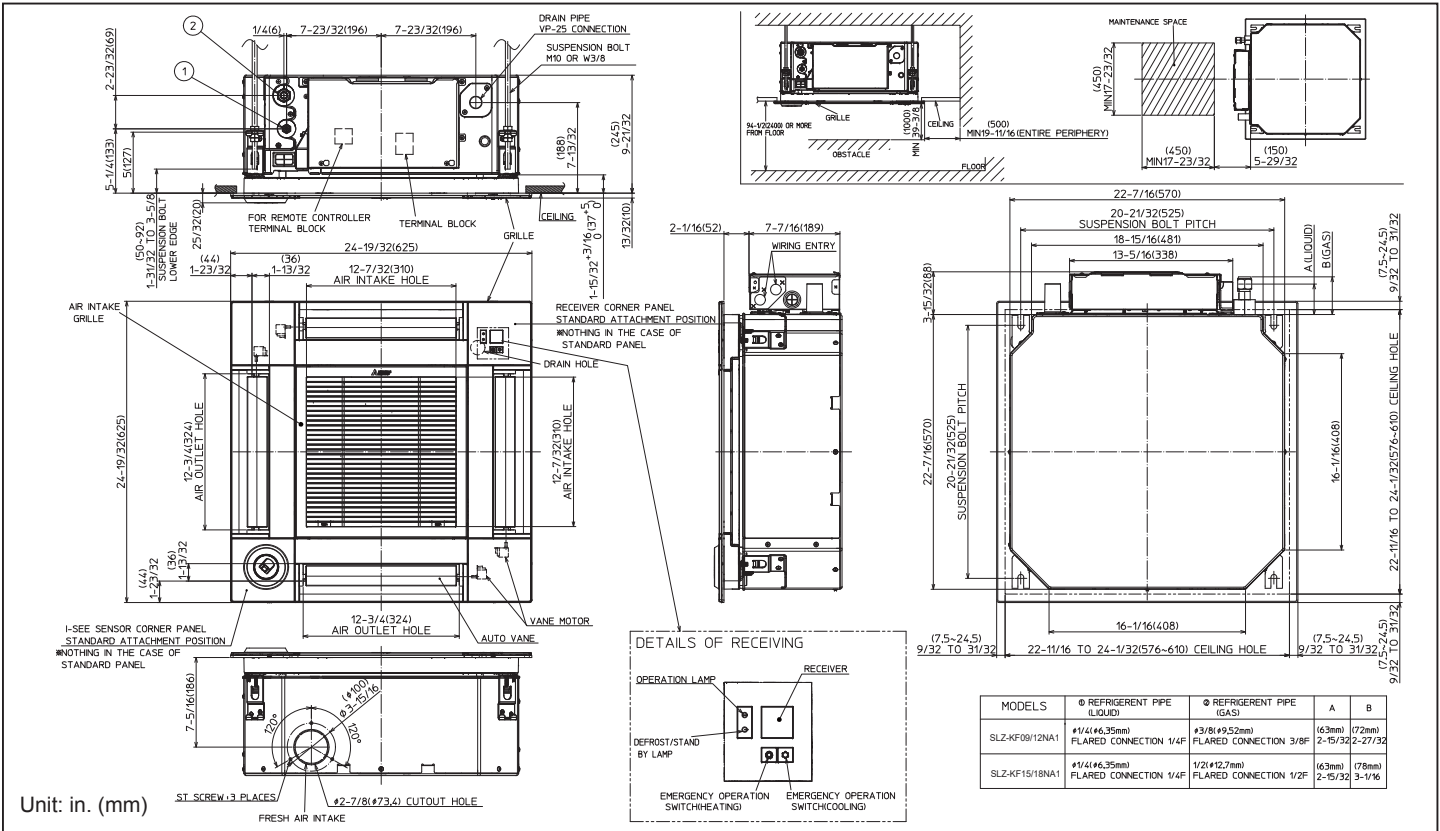
Operating range		Indoor intake air temperature		Outdoor intake air temperature	
		Maximum	D.B. 35°C (95°F), W.B. 21.7°C (71°F)	D.B. 46°C (115°F)	
Cooling	Minimum	D.B. 19.4°C (67°F), W.B. 13.9°C (57°F)	D.B. -10°C (14°F)		
	Maximum	D.B. 26.7°C (80°F), W.B. 19.4°C (67°F)	D.B. 24°C (75°F), W.B. 18°C (65°F)		
Heating	Minimum	D.B. 21.1°C (70°F), W.B. 15.6°C (60°F)	D.B. -20°C (-4°F), W.B. -21°C (-5°F)		

Specifications are subject to change without notice

Note: Mitsubishi Electric (MESCA) supports the use of only MESCA supplied and approved accessories for proper functioning of the unit(s). Use of non-MESCA supported accessories will affect warranty coverage.

*All electrical work shall comply with National (CEC) and local codes and regulations. Should this document be altered or changed without MESCA's permission, it becomes null and void. MESCA assumes no responsibility for any consequences in such cases.

DIMENSIONS: SLZ-KF09NA1 & SUZ-KA09NAH2-MX



Should this document be altered or changed without MESCA's permission, it becomes null and void. MESCA assumes no responsibility for any consequences in such cases.



Form # SB_SLZ-KF09NA1_SUZ-KA09NAH2-MX_202310
Specifications are subject to change without notice.
www.MitsubishiElectric.ca
© 2023 Mitsubishi Electric Sales Canada Inc.