

AIR CONDITIONING SYSTEMS

# CITY MULTI



## DATA BOOK

MODEL

---

**PEFY-P-NMAU-E4**

**PEFY-P-NMAU-E5**



**PEFY-P-NMAU-E4, PEFY-P-NMAU-E5**

1. SPECIFICATIONS .....	2
2. EXTERNAL DIMENSIONS .....	5
3. CENTER OF GRAVITY .....	9
4. ELECTRICAL WIRING DIAGRAMS .....	10
5. SOUND LEVELS .....	11
5-1. Sound levels .....	11
5-2. NC curves .....	12
6. FAN CHARACTERISTICS CURVES.....	15
7. OA INTAKE-STATIC PRESSURE CURVES.....	23
8. ELECTRICAL CHARACTERISTICS.....	24
9. OPTIONAL PARTS.....	25
9-1. Optional parts line up for the Indoor unit.....	25
9-2. Filter box .....	25
9-3. External heater adapter .....	26

# 1. SPECIFICATIONS

Ceiling concealed (Medium static pressure type)

PEFY-P-NMAU-E4/E5

Model			PEFY-P06NMAU-E4	PEFY-P08NMAU-E4	PEFY-P12NMAU-E4	PEFY-P15NMAU-E4	
Power source			1-phase 208/230 V 60 Hz	1-phase 208/230 V 60 Hz	1-phase 208/230 V 60 Hz	1-phase 208/230 V 60 Hz	
Cooling capacity (Nominal)	*1	BTU/h	6,000	8,000	12,000	15,000	
	*1	kW	1.8	2.3	3.5	4.4	
	*2	Power input	kW	0.042	0.042	0.052	0.062
	*2	Current input	A	0.42/0.38	0.42/0.38	0.56/0.51	0.64/0.58
Heating capacity (Nominal)	*3	BTU/h	6,700	9,000	13,500	17,000	
	*3	kW	2.0	2.6	4.0	5.0	
	*2	Power input	kW	0.040	0.040	0.050	0.060
	*2	Current input	A	0.42/0.38	0.42/0.38	0.56/0.51	0.64/0.58
External finish			Galvanized steel plate	Galvanized steel plate	Galvanized steel plate	Galvanized steel plate	
External dimension H x W x D		inch	9-7/8 x 27-9/16 x 28-7/8	9-7/8 x 27-9/16 x 28-7/8	9-7/8 x 27-9/16 x 28-7/8	9-7/8 x 35-7/16 x 28-7/8	
		mm	250 x 700 x 732	250 x 700 x 732	250 x 700 x 732	250 x 900 x 732	
Net weight		lbs (kg)	47 (21)	47 (21)	47 (21)	58 (26)	
Heat exchanger			Cross fin (Aluminum fin and copper tube)	Cross fin (Aluminum fin and copper tube)	Cross fin (Aluminum fin and copper tube)	Cross fin (Aluminum fin and copper tube)	
FAN	Type x Quantity		Sirocco fan x 1	Sirocco fan x 1	Sirocco fan x 1	Sirocco fan x 2	
	*4	External static press.	in.WG	<0.14> - 0.20 - <0.28> - <0.40> - <0.60>	<0.14> - 0.20 - <0.28> - <0.40> - <0.60>	<0.14> - 0.20 - <0.28> - <0.40> - <0.60>	<0.14> - 0.20 - <0.28> - <0.40> - <0.60>
			Pa	<35> - 50 - <70> - <100> - <150>	<35> - 50 - <70> - <100> - <150>	<35> - 50 - <70> - <100> - <150>	<35> - 50 - <70> - <100> - <150>
	Motor Type		DC motor	DC motor	DC motor	DC motor	
	Motor output		kW	0.085	0.085	0.085	0.121
	Driving mechanism		Direct-driven by motor	Direct-driven by motor	Direct-driven by motor	Direct-driven by motor	
	Air flow rate		(Low-Mid-High)				
			cfm	212 - 265 - 300	212 - 265 - 300	265 - 318 - 371	353 - 424 - 494
			m <sup>3</sup> /min	6.0 - 7.5 - 8.5	6.0 - 7.5 - 8.5	7.5 - 9.0 - 10.5	10.0 - 12.0 - 14.0
			L/s	100 - 125 - 142	100 - 125 - 142	125 - 150 - 175	167 - 200 - 233
Sound pressure level (measured in anechoic room)		(Low-Mid-High)					
*2		dB <A>	24-28-30	24-28-30	26-30-34	27-31-34	
Insulation material			EPS, Polyethylene foam, Urethane foam	EPS, Polyethylene foam, Urethane foam	EPS, Polyethylene foam, Urethane foam	EPS, Polyethylene foam, Urethane foam	
Air filter			PP honeycomb fabric.	PP honeycomb fabric.	PP honeycomb fabric.	PP honeycomb fabric.	
Protection device			Fuse	Fuse	Fuse	Fuse	
Refrigerant control device			LEV	LEV	LEV	LEV	
Connectable outdoor unit			R410A CITY MULTI	R410A CITY MULTI	R410A CITY MULTI	R410A CITY MULTI	
Diameter of refrigerant pipe	Liquid (R410A)	inch (mm)	1/4 (6.35)Braze	1/4 (6.35)Braze	1/4 (6.35)Braze	1/4 (6.35)Braze	
	Gas (R410A)	inch (mm)	1/2 (12.7)Braze	1/2 (12.7)Braze	1/2 (12.7)Braze	1/2 (12.7)Braze	
Field drain pipe size		inch (mm)	O.D.1-1/4 (32)	O.D.1-1/4 (32)	O.D.1-1/4 (32)	O.D.1-1/4 (32)	
Drawing	External		KB94C6WZ	KB94C6WZ	KB94C6WZ	KB94C6WZ	
	Wiring		KB94C6WY	KB94C6WY	KB94C6WY	KB94C6WY	
	Refrigerant cycle		-	-	-	-	
Standard attachment	Document		Installation Manual, Instruction Book	Installation Manual, Instruction Book	Installation Manual, Instruction Book	Installation Manual, Instruction Book	
	Accessory		Washer, Drain hose, Tie band	Washer, Drain hose, Tie band	Washer, Drain hose, Tie band	Washer, Drain hose, Tie band	
Optional parts	External heater adapter		PAC-YU25HT	PAC-YU25HT	PAC-YU25HT	PAC-YU25HT	
	Filter box		PAC-KE91TB-E	PAC-KE91TB-E	PAC-KE91TB-E	PAC-KE92TB-E	
Remarks			* Details on foundation work, duct work, insulation work, electrical wiring, power source switch, and other items shall be referred to the Installation Manual. * Due to continuing improvement, above specifications may be subject to change without notice.				

Notes:	Unit converter
1.Nominal cooling conditions Indoor: 80°F D.B./67°F W.B. (26.7°C D.B./19.4°C W.B.), Outdoor: 95°F D.B. (35°C D.B.) Pipe length: 25 ft. (7.6 m), Level difference: 0 ft. (0 m)	BTU/h =kW x 3.412
2.The values are measured at the factory setting of external static pressure.	cfm =m <sup>3</sup> /min x 35.31
3.Nominal heating conditions Indoor: 70°F D.B. (21.1°C D.B.), Outdoor: 47°F D.B./43°F W.B. (8.3°C D.B./6.1°C W.B.) Pipe length: 25 ft. (7.6 m), Level difference: 0 ft. (0 m)	lbs =kg/0.4536
4.The factory setting of external static pressure is shown without < >. Refer to "Fan characteristics curves", according to the external static pressure, in DATA BOOK for the usable range of air flow rate.	*Above specification data is subject to rounding variation.

# 1. SPECIFICATIONS

Ceiling concealed (Medium static pressure type)

Model			PEFY-P18NMAU-E5	PEFY-P24NMAU-E4	PEFY-P27NMAU-E4	PEFY-P30NMAU-E5	
Power source			1-phase 208/230 V 60 Hz	1-phase 208/230 V 60 Hz	1-phase 208/230 V 60 Hz	1-phase 208/230 V 60 Hz	
Cooling capacity (Nominal)	*1	BTU/h	18,000	24,000	27,000	30,000	
		kW	5.3	7.0	7.9	8.8	
	*2	Power input	kW	0.142	0.142	0.142	0.222
		Current input	A	1.24/1.12	1.24/1.12	1.24/1.12	2.01/1.82
Heating capacity (Nominal)	*3	BTU/h	20,000	27,000	30,000	34,000	
		kW	5.9	7.9	8.8	10.0	
	*2	Power input	kW	0.140	0.140	0.140	0.220
		Current input	A	1.24/1.12	1.24/1.12	1.24/1.12	2.01/1.82
External finish			Galvanized steel plate	Galvanized steel plate	Galvanized steel plate	Galvanized steel plate	
External dimension H x W x D			inch	9-7/8 x 43-5/16 x 28-7/8	9-7/8 x 43-5/16 x 28-7/8	9-7/8 x 43-5/16 x 28-7/8	9-7/8 x 55-1/8 x 28-7/8
			mm	250 x 1,100 x 732	250 x 1,100 x 732	250 x 1,100 x 732	250 x 1,400 x 732
Net weight			lbs (kg)	67 (30)	67 (30)	67 (30)	84 (38)
Heat exchanger			Cross fin (Aluminum fin and copper tube)	Cross fin (Aluminum fin and copper tube)	Cross fin (Aluminum fin and copper tube)	Cross fin (Aluminum fin and copper tube)	
FAN			Sirocco fan x 2	Sirocco fan x 2	Sirocco fan x 2	Sirocco fan x 3	
*4	External static press.	in.WG	<0.14> - 0.20 - <0.28> - <0.40> - <0.60>	<0.14> - 0.20 - <0.28> - <0.40> - <0.60>	<0.14> - 0.20 - <0.28> - <0.40> - <0.60>	<0.14> - 0.20 - <0.28> - <0.40> - <0.60>	
		Pa	<35> - 50 - <70> - <100> - <150>	<35> - 50 - <70> - <100> - <150>	<35> - 50 - <70> - <100> - <150>	<35> - 50 - <70> - <100> - <150>	
	Motor Type		DC motor	DC motor	DC motor	DC motor	
	Motor output		kW	0.121	0.121	0.121	0.300
Driving mechanism			Direct-driven by motor	Direct-driven by motor	Direct-driven by motor	Direct-driven by motor	
Air flow rate			(Low-Mid-High)	(Low-Mid-High)	(Low-Mid-High)	(Low-Mid-High)	
			cfm	618 - 742 - 883	618 - 742 - 883	618 - 742 - 883	883 - 1,077 - 1,271
			m <sup>3</sup> /min	17.5 - 21.0 - 25.0	17.5 - 21.0 - 25.0	17.5 - 21.0 - 25.0	25.0 - 30.5 - 36.0
			L/s	292 - 350 - 417	292 - 350 - 417	292 - 350 - 417	417 - 508 - 600
Sound pressure level (measured in anechoic room)			(Low-Mid-High)	(Low-Mid-High)	(Low-Mid-High)	(Low-Mid-High)	
*2 dB <A>			31-35-39	31-35-39	31-35-39	35-39-43	
Insulation material			EPS, Polyethylene foam, Urethane foam	EPS, Polyethylene foam, Urethane foam	EPS, Polyethylene foam, Urethane foam	EPS, Polyethylene foam, Urethane foam	
Air filter			PP honeycomb fabric.	PP honeycomb fabric.	PP honeycomb fabric.	PP honeycomb fabric.	
Protection device			Fuse	Fuse	Fuse	Fuse	
Refrigerant control device			LEV	LEV	LEV	LEV	
Connectable outdoor unit			R410A CITY MULTI	R410A CITY MULTI	R410A CITY MULTI	R410A CITY MULTI	
Diameter of refrigerant pipe	Liquid (R410A)	inch (mm)	1/4 (6.35)Braze	3/8 (9.52)Braze	3/8 (9.52)Braze	3/8 (9.52)Braze	
	Gas (R410A)	inch (mm)	1/2 (12.7)Braze	5/8 (15.88)Braze	5/8 (15.88)Braze	5/8 (15.88)Braze	
Field drain pipe size			inch (mm)	O.D. 1-1/4 (32)	O.D. 1-1/4 (32)	O.D. 1-1/4 (32)	
Drawing	External		KB94C6WZ	KB94C6WZ	KB94C6WZ	KB94C6WZ	
	Wiring		KB94C6WY	KB94C6WY	KB94C6WY	KB94C6WY	
	Refrigerant cycle		-	-	-	-	
Standard attachment	Document		Installation Manual, Instruction Book	Installation Manual, Instruction Book	Installation Manual, Instruction Book	Installation Manual, Instruction Book	
	Accessory		Washer, Drain hose, Tie band	Washer, Drain hose, Tie band	Washer, Drain hose, Tie band	Washer, Drain hose, Tie band	
Optional parts	External heater adapter		PAC-YU25HT	PAC-YU25HT	PAC-YU25HT	PAC-YU25HT	
	Filter box		PAC-KE93TB-E	PAC-KE93TB-E	PAC-KE93TB-E	PAC-KE94TB-E	
Remarks			* Details on foundation work, duct work, insulation work, electrical wiring, power source switch, and other items shall be referred to the Installation Manual. * Due to continuing improvement, above specifications may be subject to change without notice.				

Notes:	Unit converter
1.Nominal cooling conditions Indoor: 80°F D.B./67°F W.B. (26.7°C D.B./19.4°C W.B.), Outdoor: 95°F D.B. (35°C D.B.) Pipe length: 25 ft. (7.6 m), Level difference: 0 ft. (0 m)	BTU/h =kW x 3.412 cfm =m <sup>3</sup> /min x 35.31 lbs =kg/0.4536
2.The values are measured at the factory setting of external static pressure.	
3.Nominal heating conditions Indoor: 70°F D.B. (21.1°C D.B.), Outdoor: 47°F D.B./43°F W.B. (8.3°C D.B./6.1°C W.B.) Pipe length: 25 ft. (7.6 m), Level difference: 0 ft. (0 m)	
4.The factory setting of external static pressure is shown without < > . Refer to "Fan characteristics curves", according to the external static pressure, in DATA BOOK for the usable range of air flow rate.	*Above specification data is subject to rounding variation.

# 1. SPECIFICATIONS

Ceiling concealed (Medium static pressure type)

PEFY-P-NMAU-E4/E5

Model		PEFY-P36NMAU-E4	PEFY-P48NMAU-E4	PEFY-P54NMAU-E4	
Power source		1-phase 208/230 V 60 Hz	1-phase 208/230 V 60 Hz	1-phase 208/230 V 60 Hz	
Cooling capacity (Nominal)	*1	BTU/h	36,000	48,000	
	*1	kW	10.6	14.1	
	*2	Power input	kW	0.222	0.242
	*2	Current input	A	2.01/1.82	2.29/2.07
Heating capacity (Nominal)	*3	BTU/h	40,000	54,000	
	*3	kW	11.7	15.8	
	*2	Power input	kW	0.220	0.240
	*2	Current input	A	2.01/1.82	2.29/2.07
External finish		Galvanized steel plate	Galvanized steel plate	Galvanized steel plate	
External dimension H x W x D		inch	9-7/8 x 55-1/8 x 28-7/8	9-7/8 x 55-1/8 x 28-7/8	
		mm	250 x 1,400 x 732	250 x 1,400 x 732	
Net weight		lbs (kg)	84 (38)	86 (39)	
Heat exchanger		Cross fin (Aluminum fin and copper tube)	Cross fin (Aluminum fin and copper tube)	Cross fin (Aluminum fin and copper tube)	
FAN	Type x Quantity		Sirocco fan x 3	Sirocco fan x 3	
	*4	External static press.	in.WG	<0.14> - 0.20 - <0.28> - <0.40> - <0.60>	
			Pa	<35> - 50 - <70> - <100> - <150>	
	Motor Type		DC motor	DC motor	
	Motor output		kW	0.300	
	Driving mechanism		Direct-driven by motor	Direct-driven by motor	
	Air flow rate		(Low-Mid-High)		
			cfm	883 - 1,077 - 1,271	
			m <sup>3</sup> /min	25.0 - 30.5 - 36.0	
	L/s		417 - 508 - 600	433 - 525 - 617	
Sound pressure level (measured in anechoic room)		(Low-Mid-High)	(Low-Mid-High)		
*2		dB <A>	35-39-43		
Insulation material		EPS, Polyethylene foam, Urethane foam	EPS, Polyethylene foam, Urethane foam		
Air filter		PP honeycomb fabric.	PP honeycomb fabric.		
Protection device		Fuse	Fuse		
Refrigerant control device		LEV	LEV		
Connectable outdoor unit		R410A CITY MULTI	R410A CITY MULTI		
Diameter of refrigerant pipe	Liquid (R410A)	inch (mm)	3/8 (9.52)Braze		
	Gas (R410A)	inch (mm)	5/8 (15.88)Braze		
Field drain pipe size		inch (mm)	O.D.1-1/4 (32)		
Drawing	External		KB94C6WZ		
	Wiring		KB94C6WY		
	Refrigerant cycle		-		
Standard attachment	Document		Installation Manual, Instruction Book		
	Accessory		Washer, Drain hose, Tie band		
Optional parts	External heater adapter		PAC-YU25HT		
	Filter box		PAC-KE94TB-E		
Remarks		* Details on foundation work, duct work, insulation work, electrical wiring, power source switch, and other items shall be referred to the Installation Manual. * Due to continuing improvement, above specifications may be subject to change without notice.			

Notes:	Unit converter
1.Nominal cooling conditions Indoor: 80°F.D.B./67°F.W.B. (26.7°C.D.B./19.4°C.W.B.), Outdoor: 95°F.D.B. (35°C.D.B.) Pipe length: 25 ft. (7.6 m), Level difference: 0 ft. (0 m)	BTU/h =kW x 3,412
2.The values are measured at the factory setting of external static pressure.	cfm =m <sup>3</sup> /min x 35.31
3.Nominal heating conditions Indoor: 70°F.D.B. (21.1°C.D.B.), Outdoor: 47°F.D.B./43°F.W.B. (8.3°C.D.B./6.1°C.W.B.) Pipe length: 25 ft. (7.6 m), Level difference: 0 ft. (0 m)	lbs =kg/0.4536
4.The factory setting of external static pressure is shown without <>. Refer to "Fan characteristics curves", according to the external static pressure, in DATA BOOK for the usable range of air flow rate.	*Above specification data is subject to rounding variation.

PEFY-P06, 08, 12, 15, 24, 27, 36, 48, 54NMAU-E4  
PEFY-P18, 30NMAU-E5

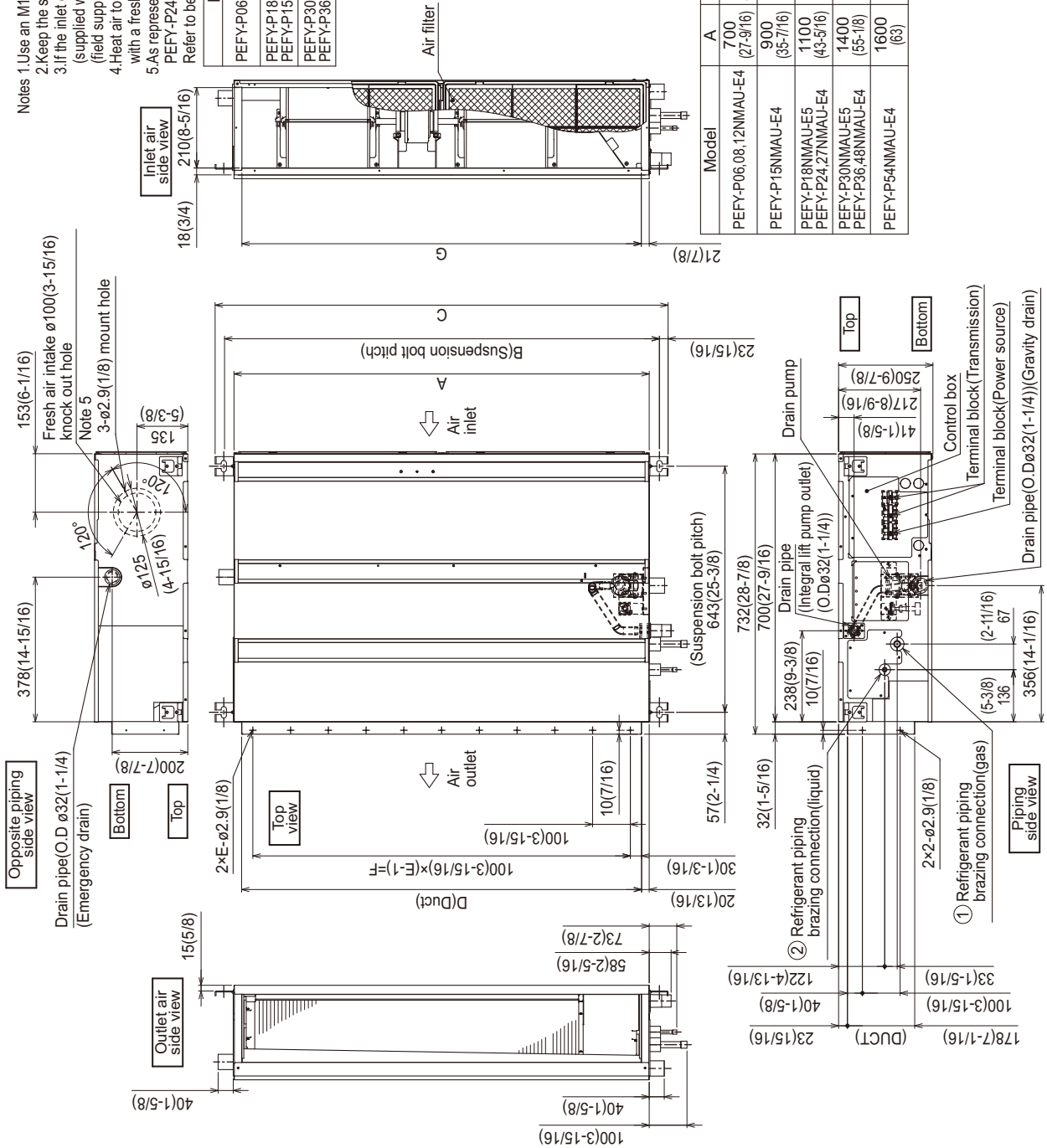
Unit: mm (in.)

- Notes
1. Use an M10 screw for the suspension bolt (field supply).
  2. Keep the service space for maintenance at the bottom.
  3. If the inlet duct is used, remove the air filter (supplied with the unit), then install the filter (field supply) at the suction side.
  4. Heat air to 0°C (32°F) or higher when taking fresh air with a fresh air intake.
  5. As representative drawing, PEFY-P24, 27NMAU-E4, PEFY-P18NMAU-E5 is shown in this drawing. Refer to below information about the number of fan.

Model	Number of fan
PEFY-P06,08,12NMAU-E4	1
PEFY-P18NMAU-E5	2
PEFY-P15,24,27NMAU-E4	2
PEFY-P30NMAU-E5	3
PEFY-P36,48,54NMAU-E4	3

Model	Unit:mm(in.)	
	① Gas pipe	② Liquid pipe
PEFY-P06,08,12NMAU-E4	ø12.7 (1/2)	ø6.35 (1/4)
PEFY-P18NMAU-E5		
PEFY-P15NMAU-E4		
PEFY-P24,27NMAU-E4	ø15.88 (5/8)	ø9.52 (3/8)
PEFY-P30NMAU-E5		
PEFY-P36,48NMAU-E4		
PEFY-P54NMAU-E4		

Model	Unit:mm(in.)										
	A	B	C	D	E	F	G				
PEFY-P06,08,12NMAU-E4	700 (27-9/16)	754 (29-11/16)	800 (31-1/2)	660 (26)	7	600 (23-5/8)	658 (25-15/16)				
PEFY-P15NMAU-E4	900 (35-7/16)	954 (37-9/16)	1000 (39-3/8)	860 (33-7/8)	9	800 (31-1/2)	858 (33-13/16)				
PEFY-P18NMAU-E5	1100 (43-5/16)	1154 (45-7/16)	1200 (47-1/4)	1060 (41-3/4)	11	1000 (39-3/8)	1058 (41-11/16)				
PEFY-P24,27NMAU-E4	1400 (55-7/8)	1454 (57-1/4)	1500 (59-1/16)	1360 (53-9/16)	14	1300 (51-3/16)	1358 (53-1/2)				
PEFY-P30NMAU-E5	1600 (63)	1654 (65-1/8)	1700 (66-15/16)	1560 (61-7/16)	16	1500 (59-1/16)	1558 (61-3/8)				

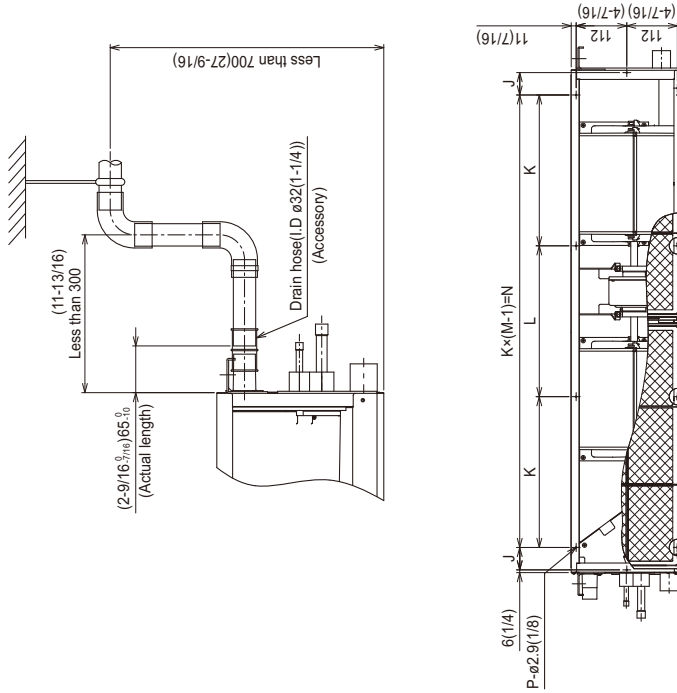


## 2. EXTERNAL DIMENSIONS

Ceiling concealed (Medium static pressure type)

### PEFY-P06, 08, 12, 15, 24, 27, 36, 48, 54NMAU-E4 PEFY-P18, 30NMAU-E5

Unit: mm (in.)



Model	H	J	K	L	M	N	P	Q	R	S
PEFY-P06,08,12NMAU-E4	80 (3-1/2)	44 (1-3/4)	150 (5-15/16)	300 (11-3/16)	4	780 (30-3/4)	10 (27-9/16)	700 (27-9/16)	50-150 (2-5/16-5/16)	1300 (51-3/16)
PEFY-P15NMAU-E4	100 (3-3/8)	54 (2-3/16)	200 (10-1/4)	300 (11-3/16)	4	900 (35-7/16)	10 (30-3/4)	900 (35-7/16)	150-250 (5-15/16-9-7/8)	1500 (59-1/16)
PEFY-P18NMAU-E5	1200 (47-1/4)	49 (1-15/16)	330 (13)	300 (11-3/16)	4	900 (35-7/16)	10 (30-3/4)	1100 (43-3/8)	250-350 (9-7/8-13-13/16)	1700 (66-15/16)
PEFY-P24,27NMAU-E4	1500 (59-1/16)	54 (2-3/16)	320 (12-3/8)	300 (11-3/16)	5	1280 (50-3/4)	12 (38-1/4)	1400 (55-1/8)	400-500 (15-3/4-19-11/16)	2000 (78-3/4)
PEFY-P36,48NMAU-E4	1700 (66-15/16)	54 (2-3/16)	370 (14-3/8)	300 (11-3/16)	5	1480 (58-5/16)	12 (38-1/4)	1600 (63)	500-600 (19-11/16-23-5/8)	2200 (86-3/8)

[Maintenance access space]  
Secure enough access space to allow for the maintenance, inspection, and replacement of the motor, fan, drain pump, heat exchanger, and control box in one of the following ways.  
Select an installation site for the indoor unit so that its maintenance access space will not be obstructed by beams or other objects.

(1) When a space of 300mm or more is available below the unit between the unit and the ceiling. (Fig. 1)

· Create access door 1 and 2 (450×450mm each) as shown in Fig.2.

(Access door 2 is not required if enough space is available below the unit for a maintenance worker to work in.)

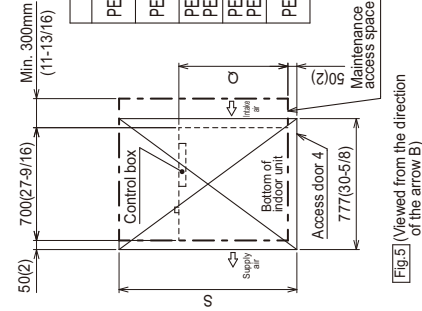
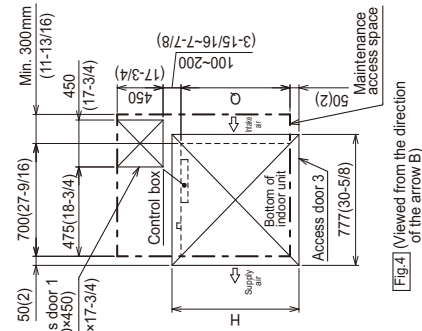
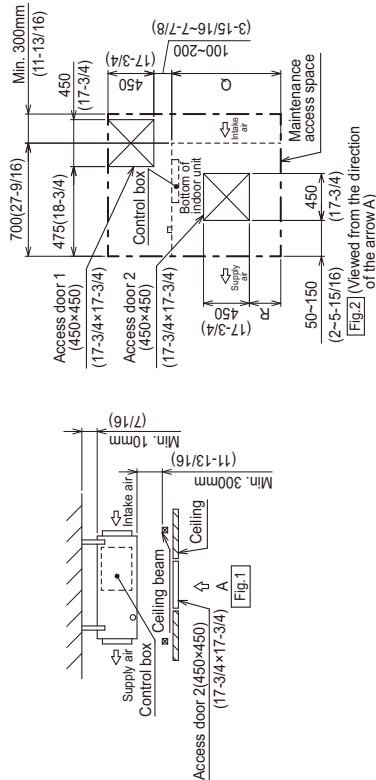
(2) When a space of less than 300mm is available below the unit between the unit and the ceiling.

(At least 20mm of space should be left below the unit as shown in Fig.3.)

· Create access door 1 diagonally below the control box and access door 3 below the unit as shown in Fig.4.

or

· Create access door 4 below the control box and the unit as shown in Fig.5.

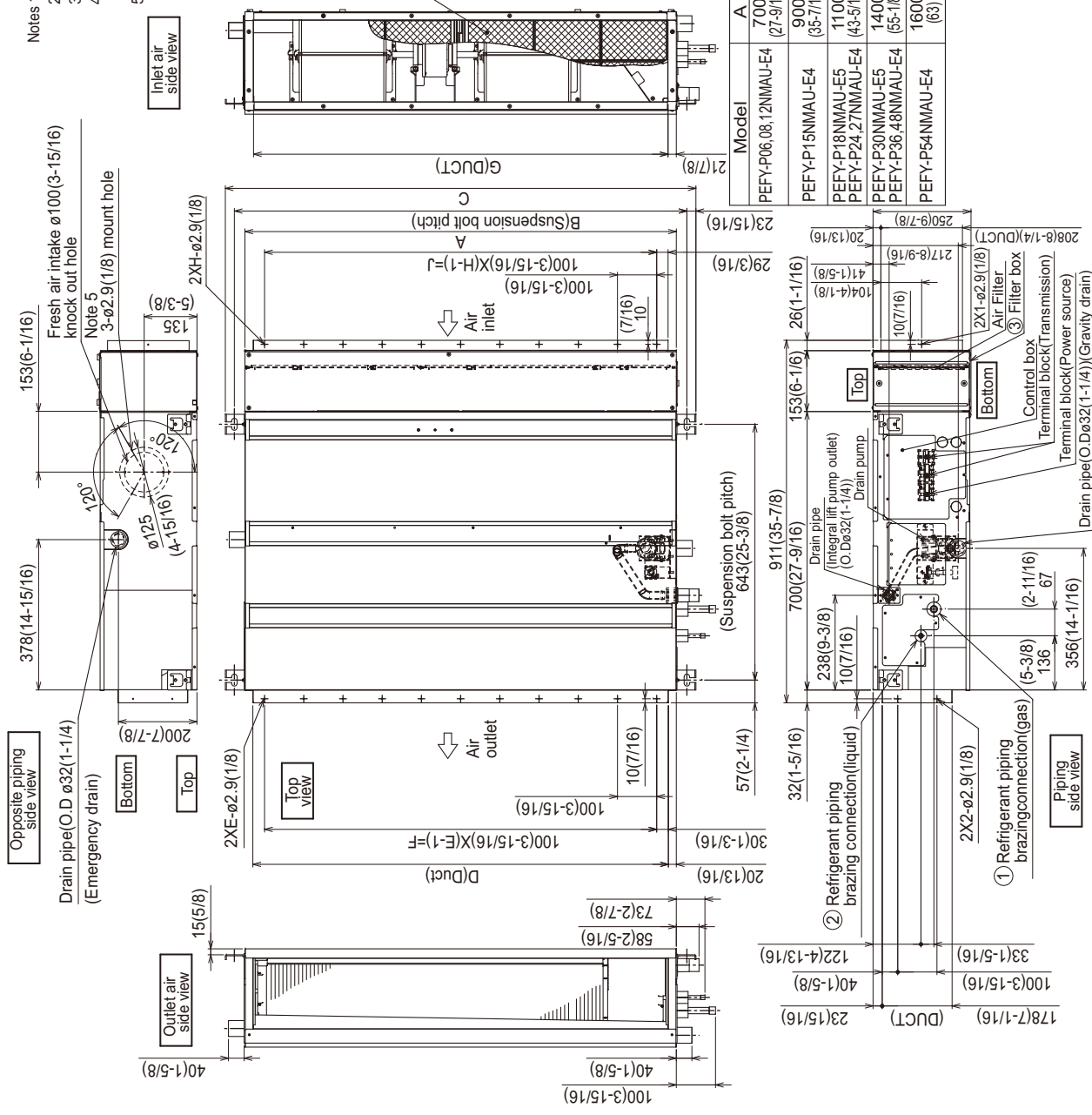


PEFY-P06, 08, 12, 15, 24, 27, 36, 48, 54NMAU-E4 with filter box  
 PEFY-P18, 30NMAU-E5 with filter box

Unit: mm (in.)

- Notes 1. Use an M10 screw for the suspension bolt (field supply).  
 2. Keep the service space for maintenance at the bottom.  
 3. Use air filter installed with indoor unit.  
 4. Heat air to 0°C (32°F) or higher when taking fresh air with a fresh air intake.  
 5. As representative drawing, PEFY-P24-27NMAU-E4, PEFY-P18NMAU-E5 is shown in this drawing. Refer to below information about the number of fan.

Model	Number of fan	① Gas pipe	② Liquid pipe	③ Filter box	Unit:mm(in.)
PEFY-P06,08,12NMAU-E4	1	ø12.7 (1/2)	ø6.35 (1/4)	PAC-KE91TB-E	J
PEFY-P18NMAU-E5	2			PAC-KE92TB-E	H
PEFY-P30NMAU-E5	3			PAC-KE93TB-E	G
PEFY-P24,27NMAU-E4	1	ø15.88 (5/8)	ø9.52 (3/8)	PAC-KE94TB-E	F
PEFY-P36,48NMAU-E4				PAC-KE95TB-E	E
PEFY-P54NMAU-E4				PAC-KE96TB-E	D



Model	A	B	C	D	E	F	G	H	J
PEFY-P06,08,12NMAU-E4	700 (27-9/16)	754 (29-11/16)	800 (31-1/2)	660 (26)	7	600 (23-5/8)	658 (25-15/16)	7	600 (23-5/8)
PEFY-P15NMAU-E4	900 (35-7/16)	954 (37-9/16)	1000 (39-3/8)	860 (33-7/8)	9	800 (31-1/2)	858 (33-13/16)	9	800 (31-1/2)
PEFY-P18NMAU-E5	1100 (43-5/16)	1154 (45-7/16)	1200 (47-1/4)	1060 (41-3/4)	11	1000 (39-3/8)	1058 (41-11/16)	11	1000 (39-3/8)
PEFY-P24,27NMAU-E4	1400 (55-1/8)	1454 (57-1/4)	1500 (59-1/16)	1360 (53-9/16)	14	1300 (51-3/16)	1358 (53-1/2)	14	1300 (51-3/16)
PEFY-P30NMAU-E5	1600 (63)	1654 (65-1/8)	1700 (66-15/16)	1560 (61-7/16)	16	1500 (59-1/16)	1558 (61-3/8)	16	1500 (59-1/16)

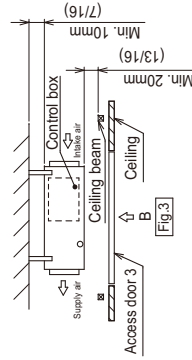
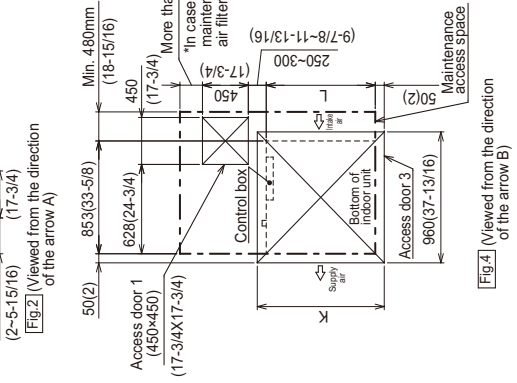
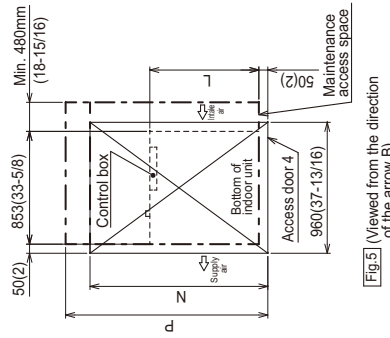
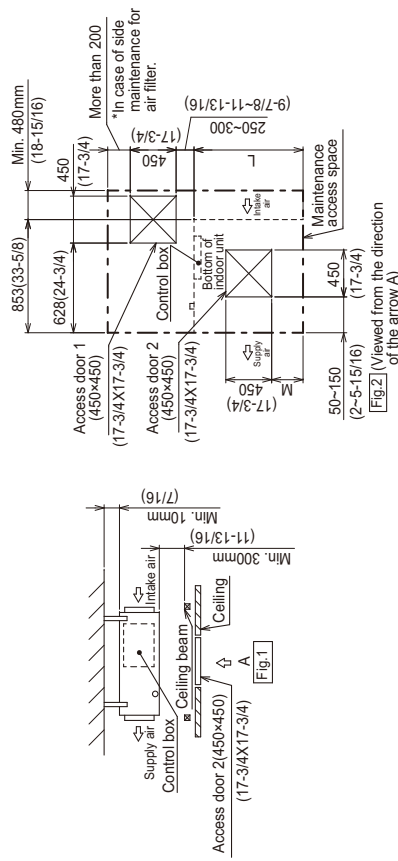
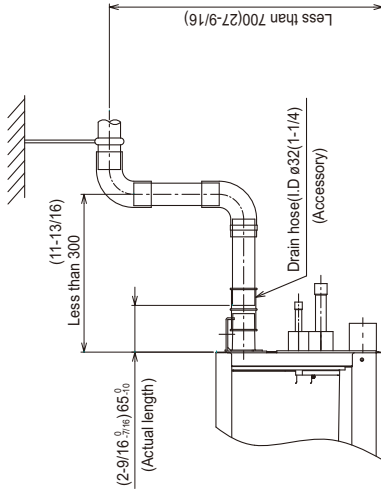


PEFY-P06, 08, 12, 15, 24, 27, 36, 48, 54NMAU-E4 with filter box  
PEFY-P18, 30NMAU-E5 with filter box

Unit: mm (in.)

[Maintenance access space]  
Secure enough access space to allow for the maintenance, inspection, and replacement of the motor, fan, drain pump, heat exchanger, and control box in one of the following ways.  
Select an installation site for the indoor unit so that it's maintenance access space will not be obstructed by beams or other objects.

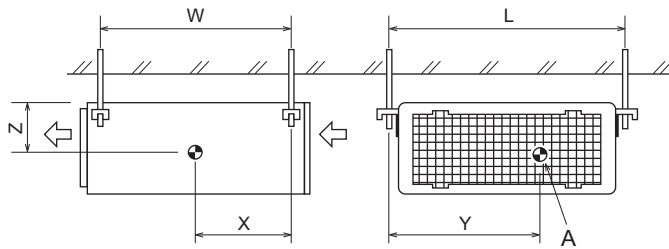
- (1) When a space of 300mm or more is available below the unit between the unit and the ceiling. (Fig.1)
- Create access door 1 and 2 (450x450mm each) as shown in Fig.2.  
(Access door 2 is not required if enough space is available below the unit for a maintenance worker to work in.)
- (2) When a space of less than 300mm is available below the unit between the unit and the ceiling.  
(At least 20mm of space should be left below the unit as shown in Fig.3.)
- Create access door 1 diagonally below the control box and access door 3 below the unit as shown in Fig.4.
- or
- Create access door 4 below the control box and the unit as shown in Fig.5.



\*Dimension 'P' is in case of side maintenance for air filter.  
Unit:mm (in.)

Model	K	L	M	N	P*
PEFY-P06,08,12NMAU-E4	800 (31-1/2)	700 (27-9/16)	50-150 (2)-(5-5/16)	1300 (51-3/16)	1450 (57-1/8)
PEFY-P15NMAU-E4	1000 (39-3/8)	900 (35-7/16)	150-250 (5-15/16)-(9-7/8)	1500 (59-1/16)	1850 (72-7/8)
PEFY-P18NMAU-E5	1200 (47-1/4)	1100 (43-5/16)	250-350 (9-7/8)-(13-13/16)	1700 (66-15/16)	-
PEFY-P24,27NMAU-E4	1500 (59-1/16)	1400 (55-1/8)	400-500 (15-3/4)-(19-11/16)	2000 (78-3/4)	2150 (84-11/16)
PEFY-P36,48NMAU-E4	1700 (66-15/16)	1600 (63)	500-600 (19-11/16)-(23-5/8)	2200 (86-5/8)	2550 (100-7/16)

PEFY-P06, 08, 12, 15, 24, 27, 36, 48, 54NMAU-E4  
 PEFY-P18, 30NMAU-E5

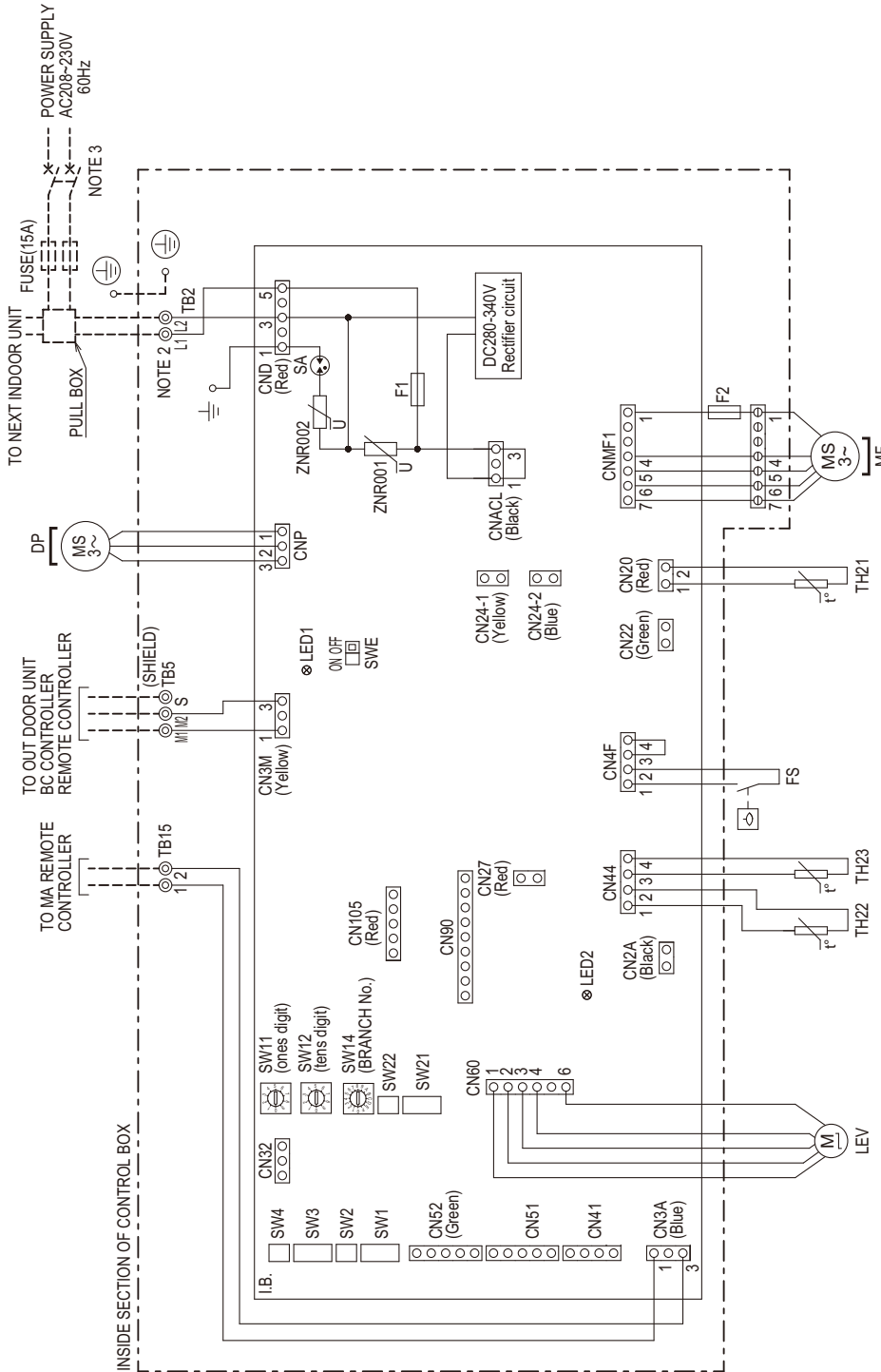


A: Center of gravity

(mm) [in]

Model name	W	L	X	Y	Z
PEFY-P06NMAU-E4	643 [25-6/16]	754 [29-11/16]	330 [13]	300 [11-13/16]	130 [5-2/16]
PEFY-P08NMAU-E4	643 [25-6/16]	754 [29-11/16]	330 [13]	300 [11-13/16]	130 [5-2/16]
PEFY-P12NMAU-E4	643 [25-6/16]	754 [29-11/16]	330 [13]	300 [11-13/16]	130 [5-2/16]
PEFY-P15NMAU-E4	643 [25-6/16]	954 [37-9/16]	340 [13-7/16]	375 [14-13/16]	130 [5-2/16]
PEFY-P18NMAU-E5	643 [25-6/16]	1154 [45-7/16]	325 [12-13/16]	525 [20-11/16]	130 [5-2/16]
PEFY-P24NMAU-E4	643 [25-6/16]	1154 [45-7/16]	325 [12-13/16]	525 [20-11/16]	130 [5-2/16]
PEFY-P27NMAU-E4	643 [25-6/16]	1154 [45-7/16]	325 [12-13/16]	525 [20-11/16]	130 [5-2/16]
PEFY-P30NMAU-E5	643 [25-6/16]	1454 [57-4/16]	330 [13]	675 [26-10/16]	130 [5-2/16]
PEFY-P36NMAU-E4	643 [25-6/16]	1454 [57-4/16]	330 [13]	675 [26-10/16]	130 [5-2/16]
PEFY-P48NMAU-E4	643 [25-6/16]	1454 [57-4/16]	330 [13]	675 [26-10/16]	130 [5-2/16]
PEFY-P54NMAU-E4	643 [25-6/16]	1654 [65-2/16]	332 [13-2/16]	725 [28-9/16]	130 [5-2/16]

PEFY-P06, 08, 12, 15, 24, 27, 36, 48, 54NMAU-E4  
PEFY-P18, 30NMAU-E5



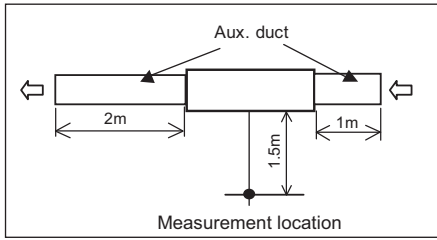
- NOTES:1. Symbols used in wiring diagram are  
 ○ ○ ○ ○ : Connector, ⊙ : Terminal,  
 - - - - - (Heavy dotted line): Field wiring.  
 2. Use copper supply wires.  
 Utilisez des fils d'alimentation en cuivre.  
 3. A disconnect should be required by local code.  
 Se procurer un sectionneur conforme aux réglementations Locales.

SYMBOL EXPLANATION

SYMBOL	NAME	SYMBOL	NAME	SYMBOL	NAME
DP	Drain Pump	I.B.	Indoor controller board	SW1	Indoor controller board
F2	Fuse DC400V 3A SHV11	SA	Attester	SW2	Switch (for mode selection)
FS	Fuse AC250V 6.3A (TP) M-BL8A04	F1	Fuse AC250V 6.3A (TP) M-BL8A04	SW3	Switch (for mode selection)
MF	Fan Motor	ZNR001,002	Varistor	SW4	Switch (for model selection)
LEV	Linear expansion valve	CN2A	Connector (0-10V Analog input)	SW11	Switch (Address setting for ones digit)
TB5	Power source terminal block	CN2Z	Connector (Fan control)	SW12	Switch (Address setting for tens digit)
TB15	Transmission terminal block	CN24-1	Connector (Heater control 1st)	SW14	Switch (Address setting for tens digit)
TH21	Thermistor (inlet air temp. detection)	CN24-2	Connector (Heater control 2nd)	SW21	Switch (for static pressure selection)
TH22	Thermistor (piping temp. detection/liquid)	CN27	Connector (Damper)	SW22	Switch (Wireless pair No.)
TH23	Thermistor (piping temp. detection/gas)	CN32	Connector (Remote switch)	SWE	Connector (emergency operation)
		CN41	Connector (HA terminal+A)	LED1	LED(Power supply)
		CN51	Connector (Centrally control)	LED2	LED(Remote controller supply)
		CN52	Connector (Remote indication)		
		CN90	Connector (Wireless)		
		CN105	Connector (IT terminal)		

5-1. Sound levels

PEFY-P-NMAU-E4/E5



\* Measured in anechoic room.

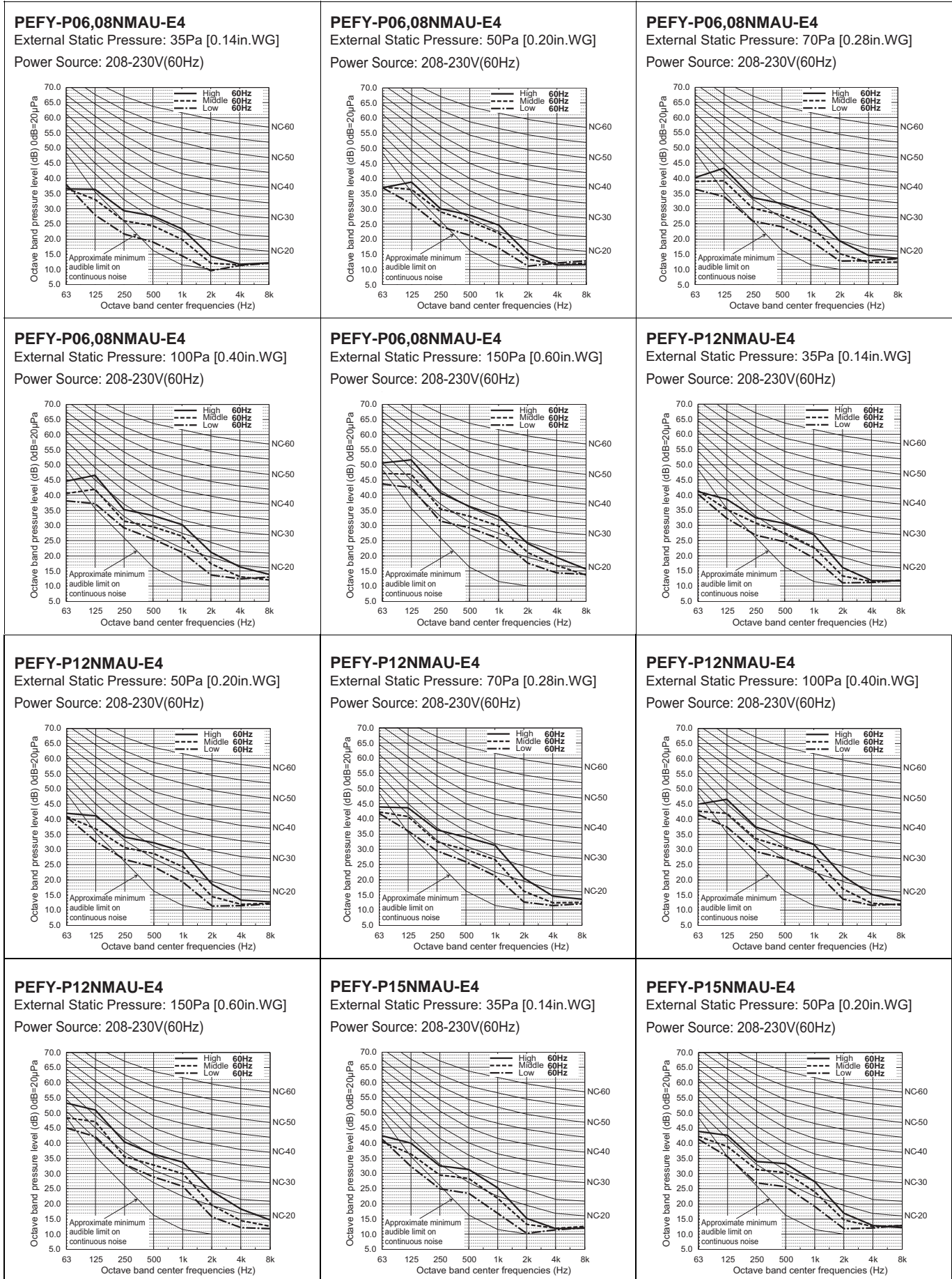
Sound level at anechoic room: Low-Mid-High

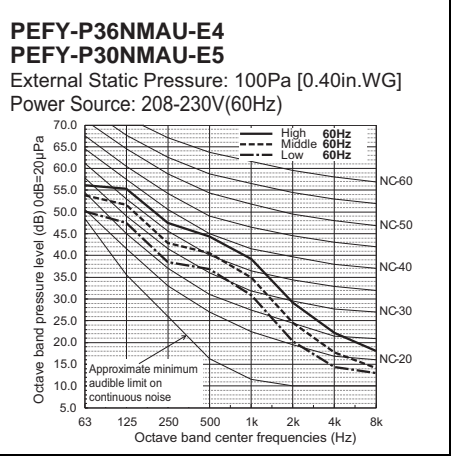
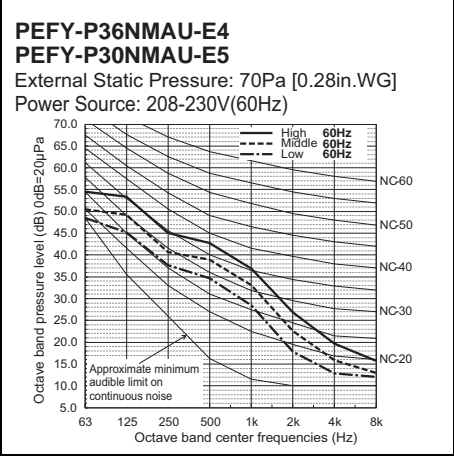
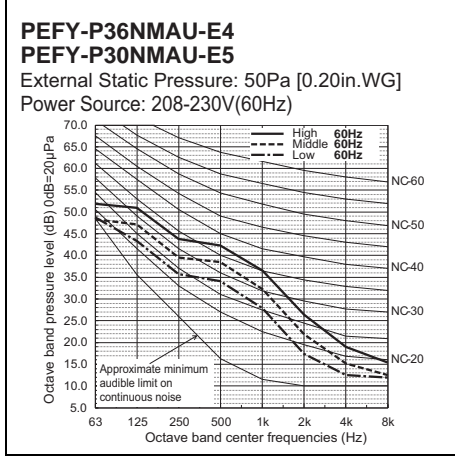
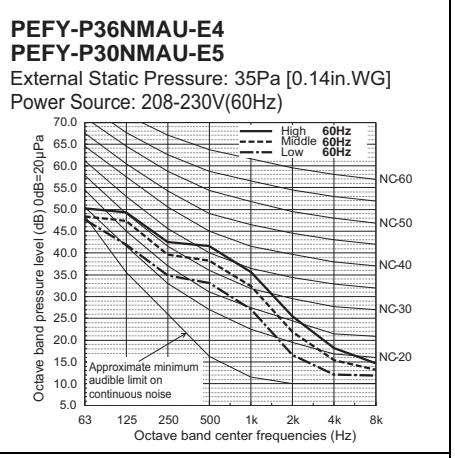
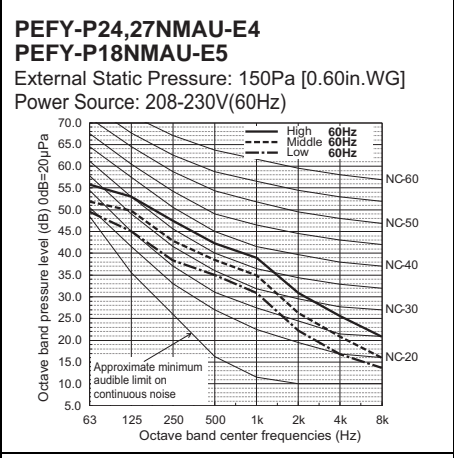
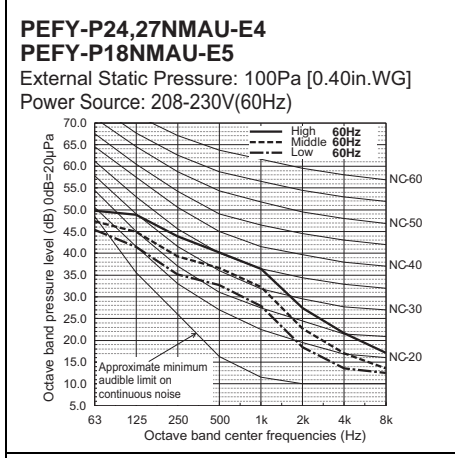
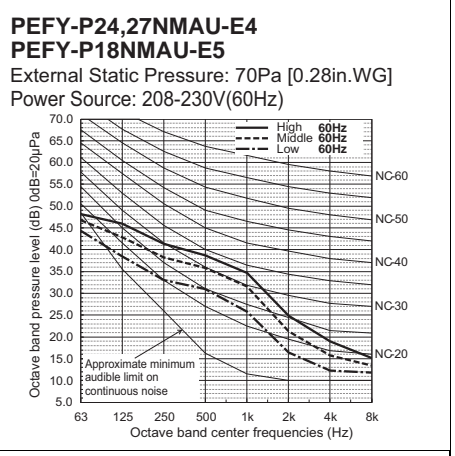
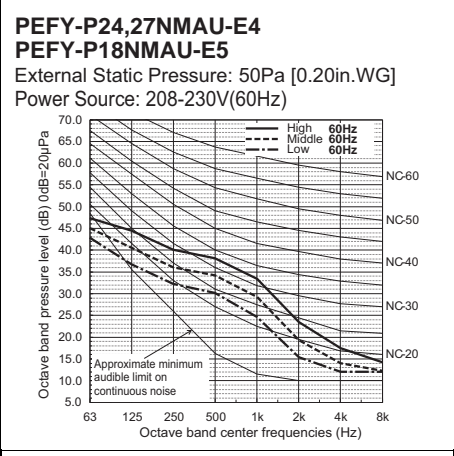
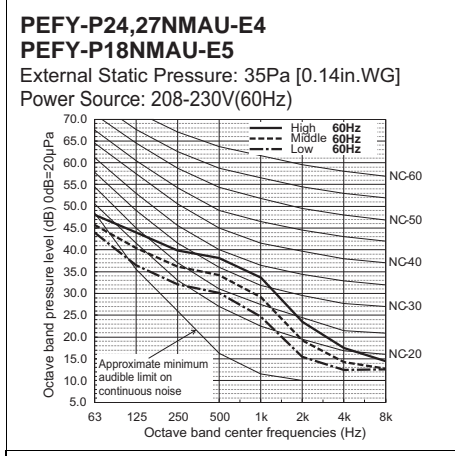
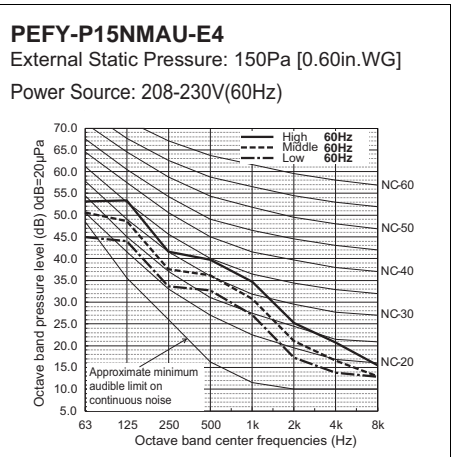
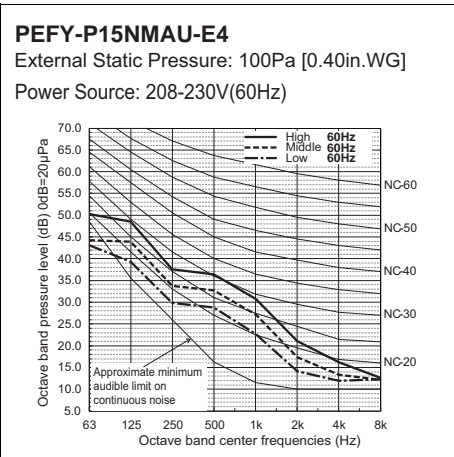
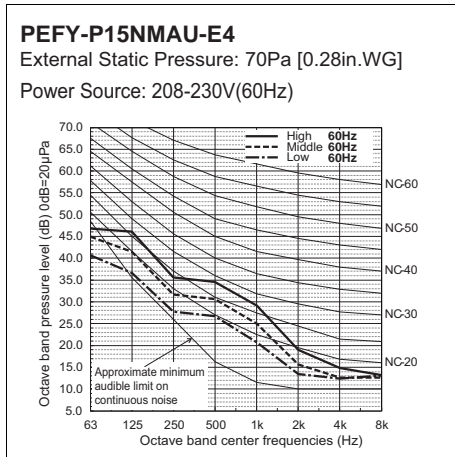
Model	Sound level dB (A)				
	35Pa	50Pa	70Pa	100Pa	150Pa
PEFY-P06NMAU-E4	22-26-29	24-28-30	26-30-34	28-32-36	32-36-40
PEFY-P08NMAU-E4	22-26-29	24-28-30	26-30-34	28-32-36	32-36-40
PEFY-P12NMAU-E4	26-29-32	26-30-34	28-32-36	29-33-37	32-36-40
PEFY-P15NMAU-E4	25-29-32	27-31-34	28-32-36	30-34-38	34-38-42
PEFY-P18NMAU-E5	31-35-39	31-35-39	32-37-40	34-38-42	37-41-45
PEFY-P24NMAU-E4	31-35-39	31-35-39	32-37-40	34-38-42	37-41-45
PEFY-P27NMAU-E4	31-35-39	31-35-39	32-37-40	34-38-42	37-41-45
PEFY-P30NMAU-E5	34-39-42	35-39-43	36-40-44	38-42-46	41-45-49
PEFY-P36NMAU-E4	34-39-42	35-39-43	36-40-44	38-42-46	41-45-49
PEFY-P48NMAU-E4	35-39-43	35-40-44	37-41-45	38-42-46	40-44-48
PEFY-P54NMAU-E4	33-37-41	34-38-42	35-39-43	37-41-45	39-43-47

PEFY-P-NMAU-E4/E5

5-2. NC curves

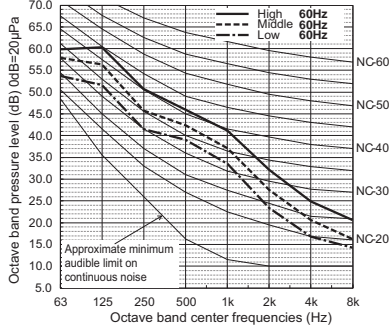
PEFY-P-NMAU-E4/E5



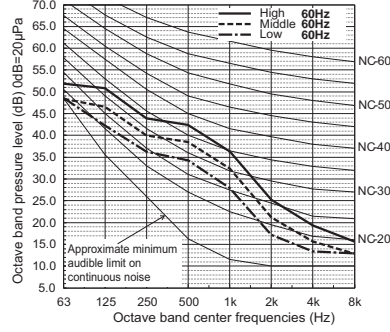


PEFY-P-NMAU-E4/E5

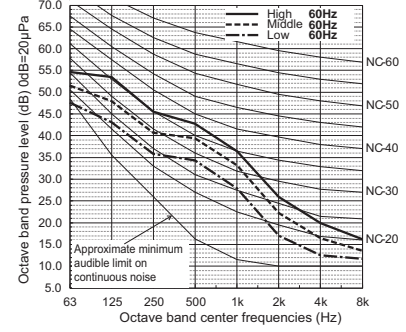
**PEFY-P36NMAU-E4**  
**PEFY-P30NMAU-E5**  
 External Static Pressure: 150Pa [0.60in.WG]  
 Power Source: 208-230V(60Hz)



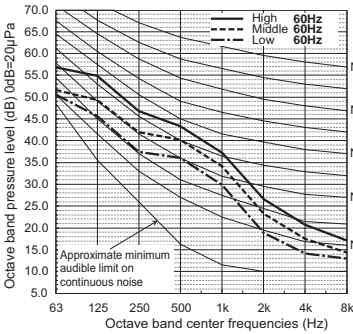
**PEFY-P48NMAU-E4**  
 External Static Pressure: 35Pa [0.14in.WG]  
 Power Source: 208-230V(60Hz)



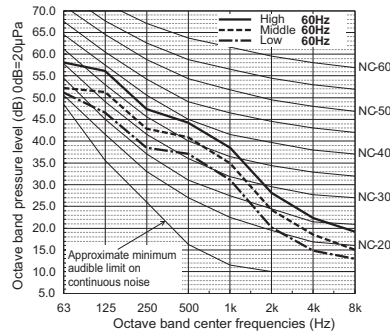
**PEFY-P48NMAU-E4**  
 External Static Pressure: 50Pa [0.20in.WG]  
 Power Source: 208-230V(60Hz)



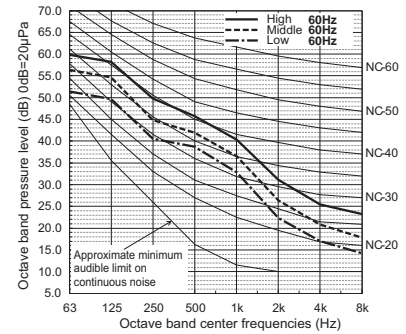
**PEFY-P48NMAU-E4**  
 External Static Pressure: 70Pa [0.28in.WG]  
 Power Source: 208-230V(60Hz)



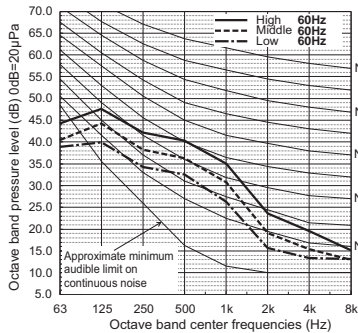
**PEFY-P48NMAU-E4**  
 External Static Pressure: 100Pa [0.40in.WG]  
 Power Source: 208-230V(60Hz)



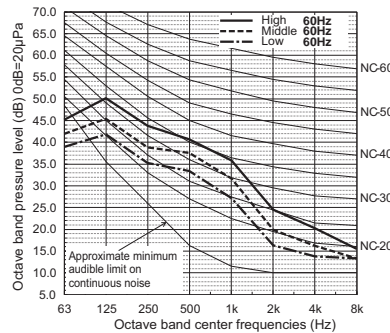
**PEFY-P48NMAU-E4**  
 External Static Pressure: 150Pa [0.60in.WG]  
 Power Source: 208-230V(60Hz)



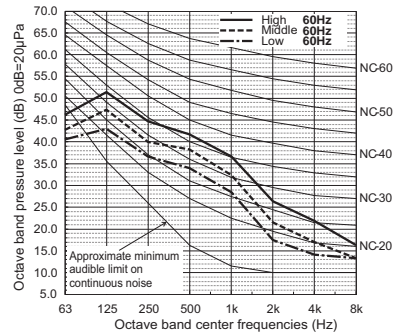
**PEFY-P54NMAU-E4**  
 External Static Pressure: 35Pa [0.14in.WG]  
 Power Source: 208-230V(60Hz)



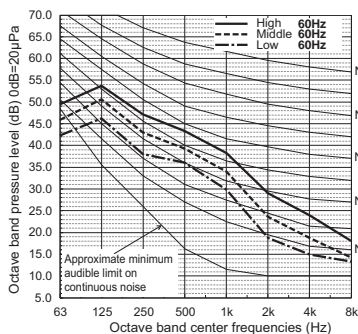
**PEFY-P54NMAU-E4**  
 External Static Pressure: 50Pa [0.20in.WG]  
 Power Source: 208-230V(60Hz)



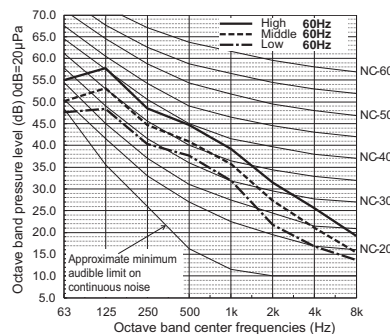
**PEFY-P54NMAU-E4**  
 External Static Pressure: 70Pa [0.28in.WG]  
 Power Source: 208-230V(60Hz)



**PEFY-P54NMAU-E4**  
 External Static Pressure: 100Pa [0.40in.WG]  
 Power Source: 208-230V(60Hz)

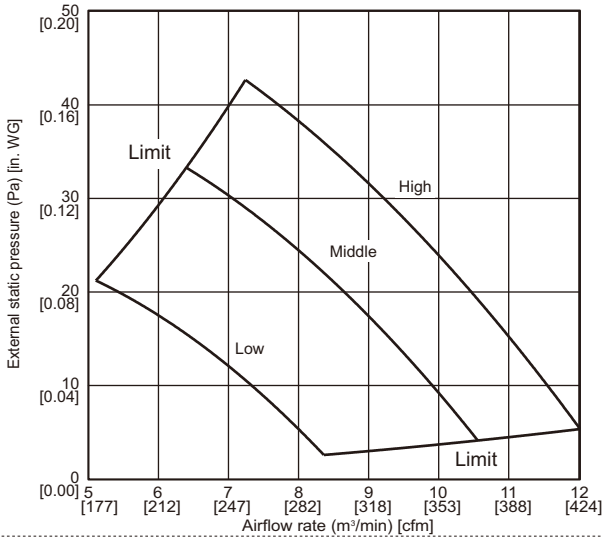


**PEFY-P54NMAU-E4**  
 External Static Pressure: 150Pa [0.60in.WG]  
 Power Source: 208-230V(60Hz)



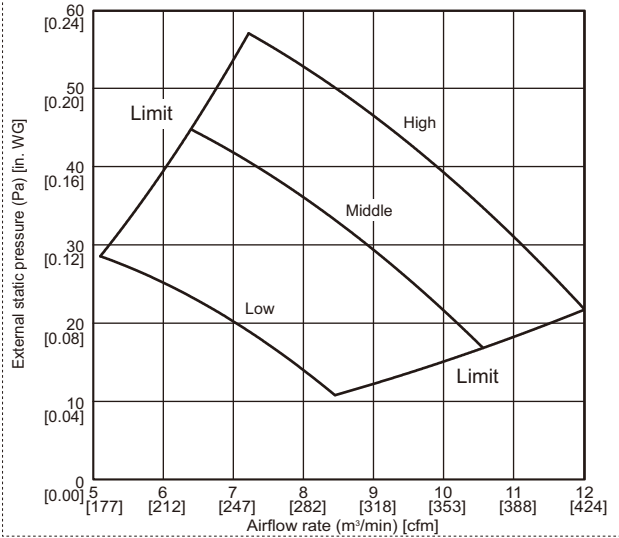
**PEFY-P06,08NMAU-E4**

External static pressure : 35Pa [0.14in.WG]  
Power source : 208-230V



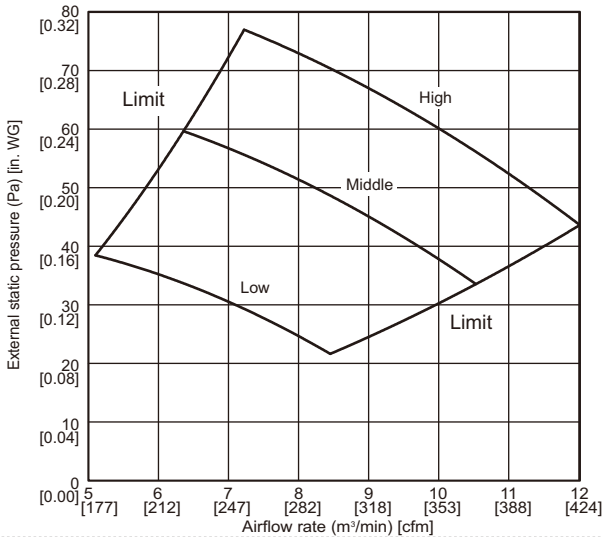
**PEFY-P06,08NMAU-E4**

External static pressure : 50Pa [0.20in.WG]  
Power source : 208-230V



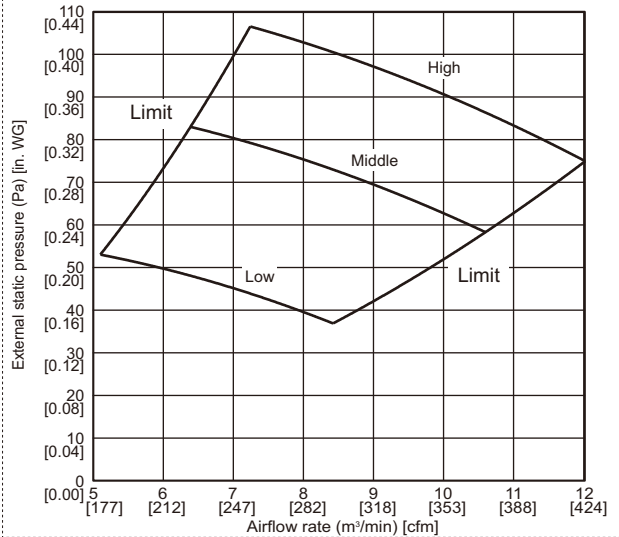
**PEFY-P06,08NMAU-E4**

External static pressure : 70Pa [0.28in.WG]  
Power source : 208-230V



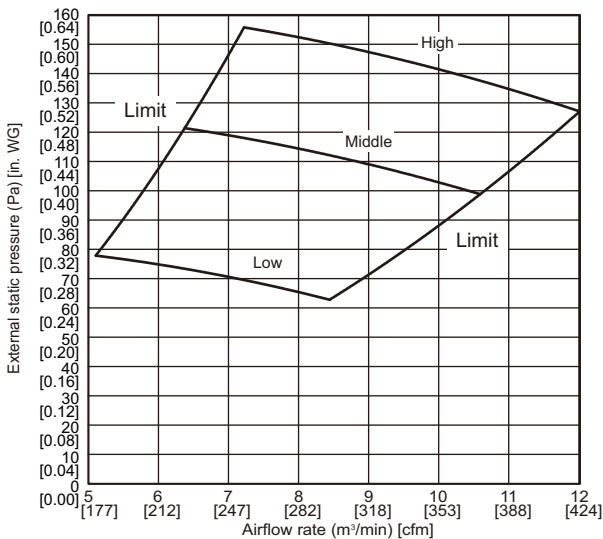
**PEFY-P06,08NMAU-E4**

External static pressure : 100Pa [0.40in.WG]  
Power source : 208-230V



**PEFY-P06,08NMAU-E4**

External static pressure : 150Pa [0.60in.WG]  
Power source : 208-230V





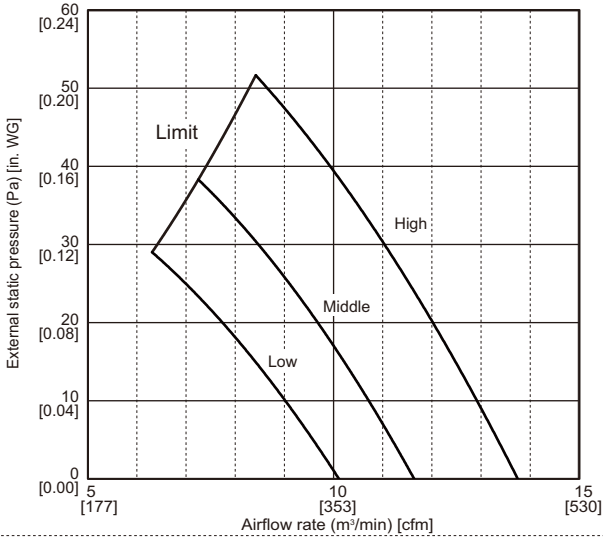
## 6. FAN CHARACTERISTICS CURVES

Ceiling concealed (Medium static pressure type)

PEFY-P-NMAU-E4/E5

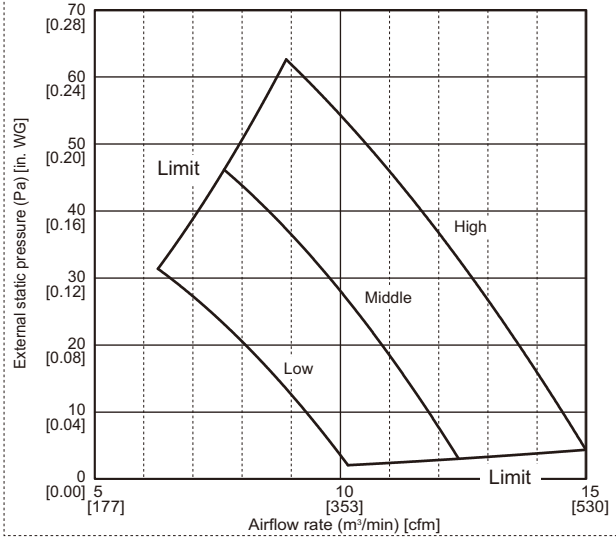
### PEFY-P12NMAU-E4

External static pressure : 35Pa [0.14in.WG]  
Power source : 208-230V



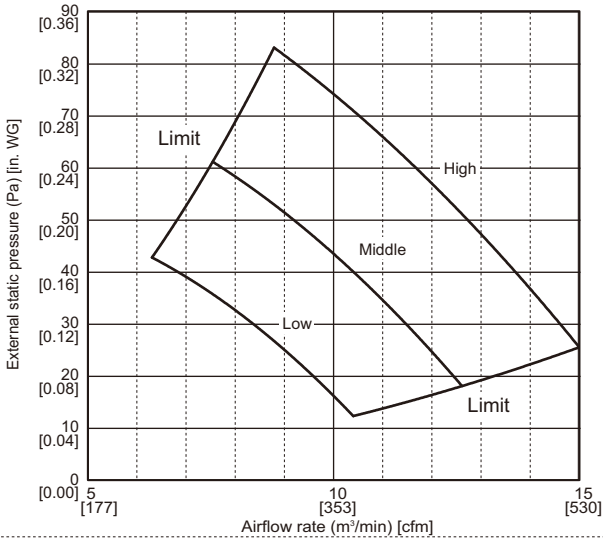
### PEFY-P12NMAU-E4

External static pressure : 50Pa [0.20in.WG]  
Power source : 208-230V



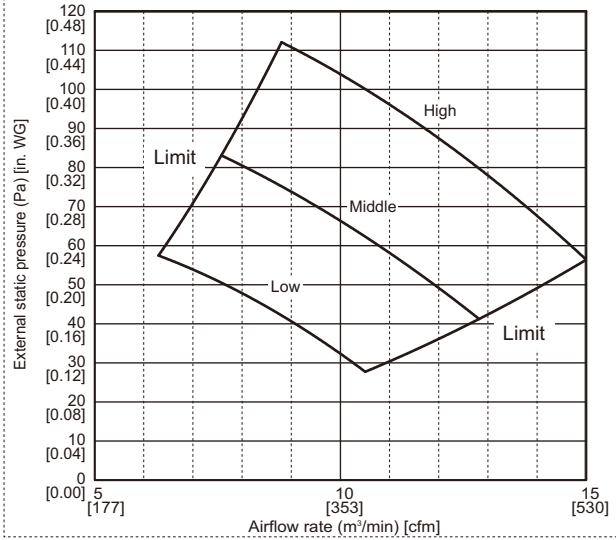
### PEFY-P12NMAU-E4

External static pressure : 70Pa [0.28in.WG]  
Power source : 208-230V



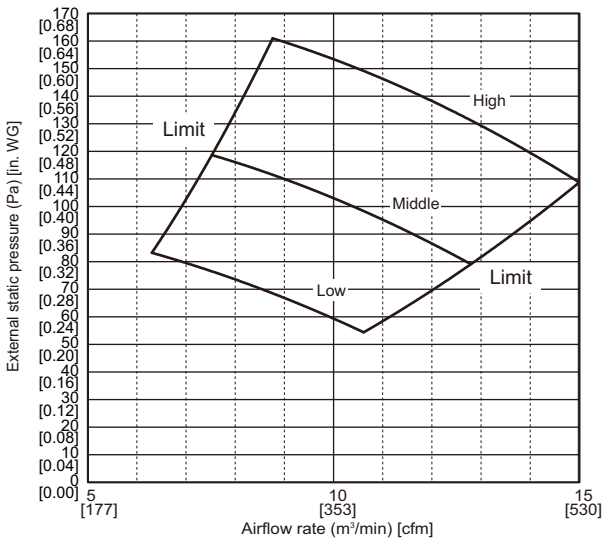
### PEFY-P12NMAU-E4

External static pressure : 100Pa [0.40in.WG]  
Power source : 208-230V



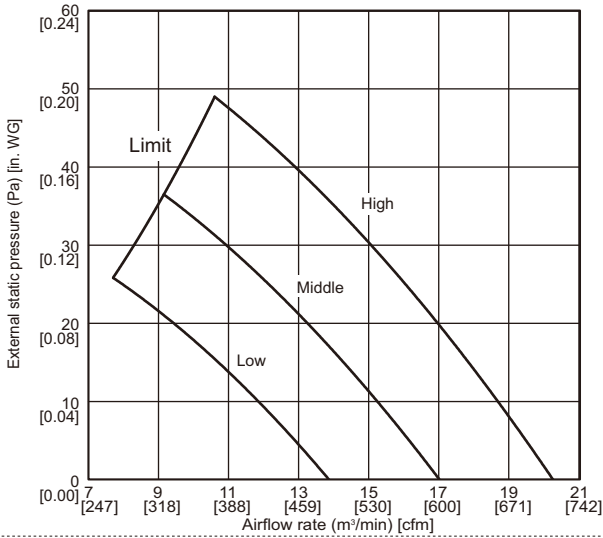
### PEFY-P12NMAU-E4

External static pressure : 150Pa [0.60in.WG]  
Power source : 208-230V



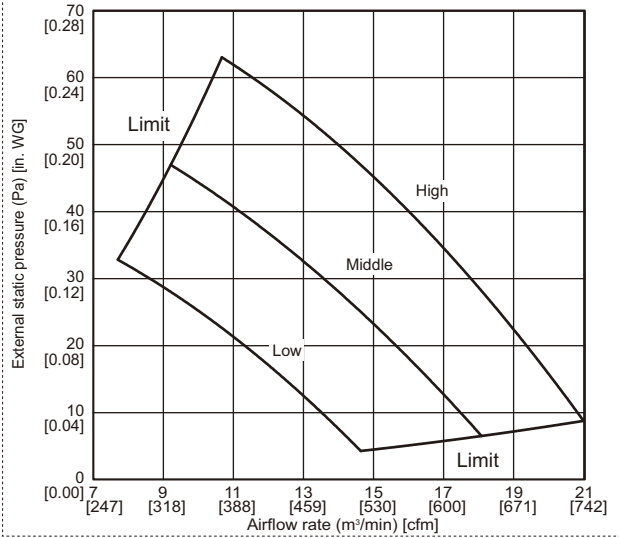
**PEFY-P15NMAU-E4**

External static pressure : 35Pa [0.14in.WG]  
Power source : 208-230V



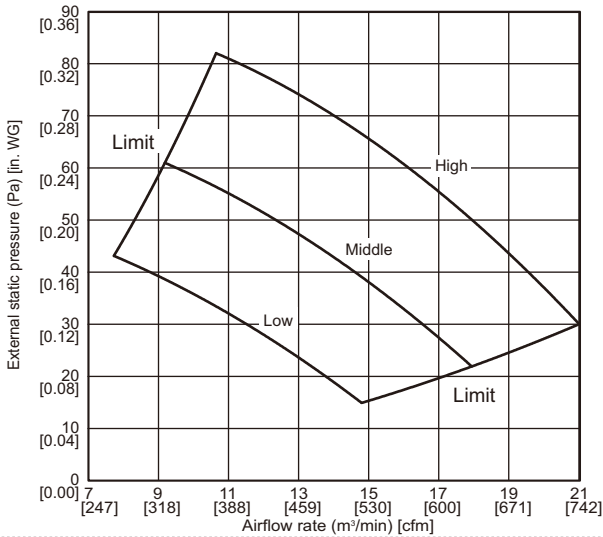
**PEFY-P15NMAU-E4**

External static pressure : 50Pa [0.20in.WG]  
Power source : 208-230V



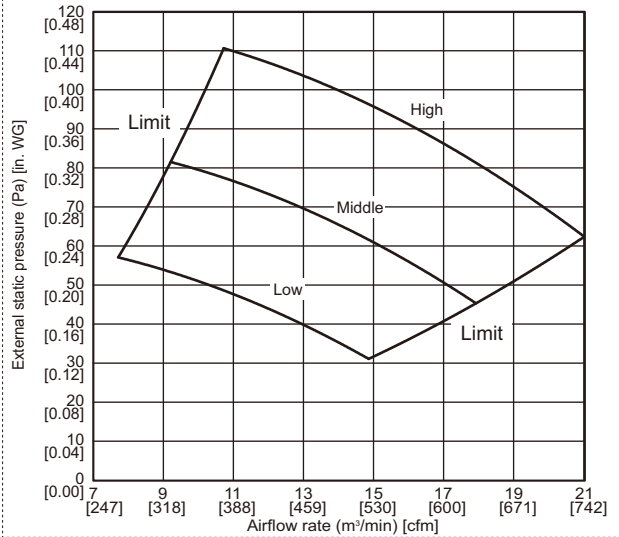
**PEFY-P15NMAU-E4**

External static pressure : 70Pa [0.28in.WG]  
Power source : 208-230V



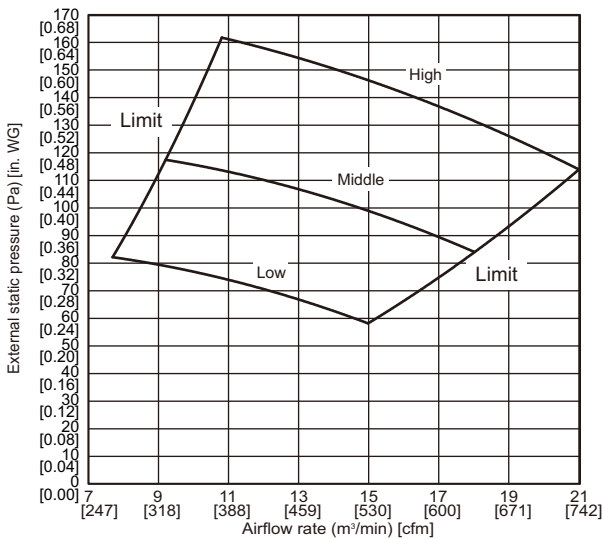
**PEFY-P15NMAU-E4**

External static pressure : 100Pa [0.40in.WG]  
Power source : 208-230V



**PEFY-P15NMAU-E4**

External static pressure : 150Pa [0.60in.WG]  
Power source : 208-230V



## 6. FAN CHARACTERISTICS CURVES

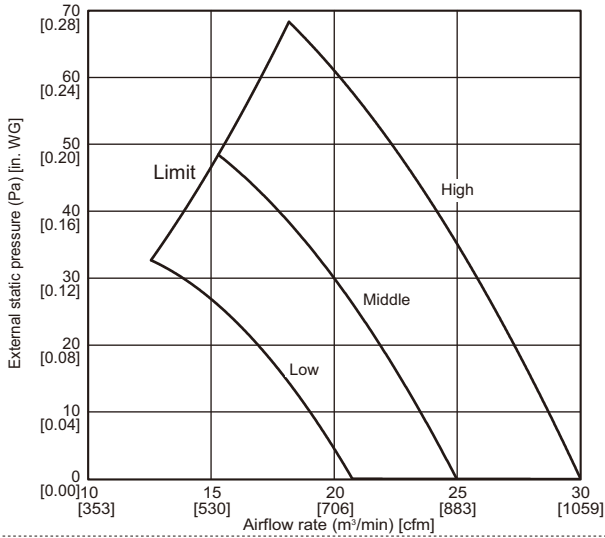
Ceiling concealed (Medium static pressure type)

PEFY-P-NMAU-E4/E5

### PEFY-P24,27NMAU-E4, PEFY-P18NMAU-E5

External static pressure : 35Pa [0.14in.WG]

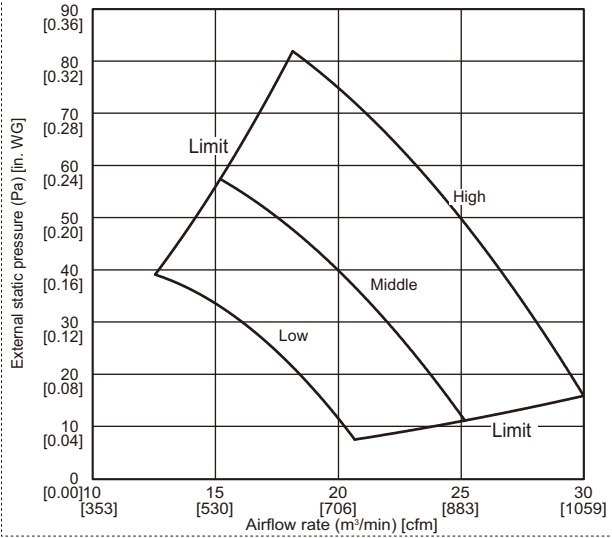
Power source : 208-230V



### PEFY-P24,27NMAU-E4, PEFY-P18NMAU-E5

External static pressure : 50Pa [0.20in.WG]

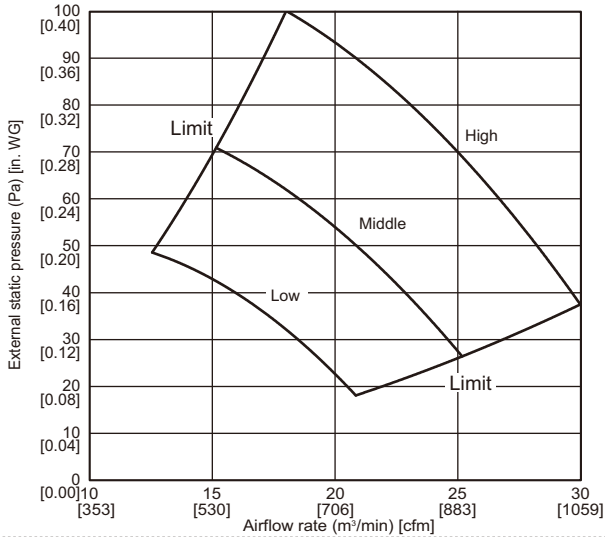
Power source : 208-230V



### PEFY-P24,27NMAU-E4, PEFY-P18NMAU-E5

External static pressure : 70Pa [0.28in.WG]

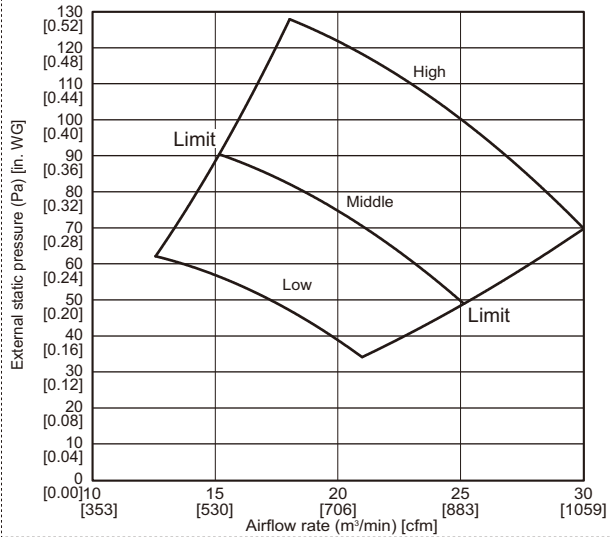
Power source : 208-230V



### PEFY-P24,27NMAU-E4, PEFY-P18NMAU-E5

External static pressure : 100Pa [0.40in.WG]

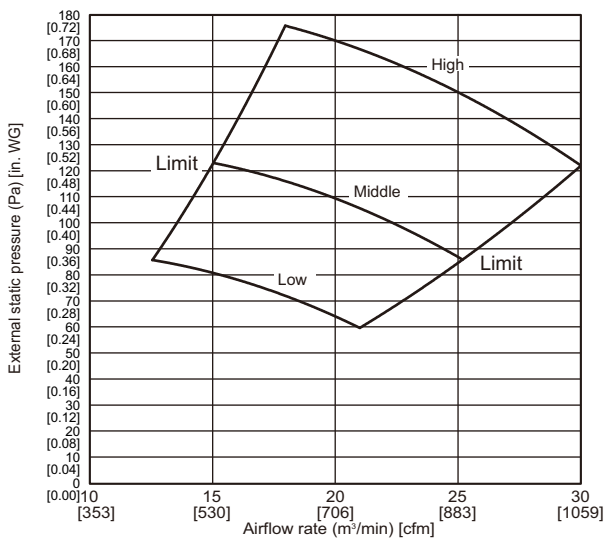
Power source : 208-230V



### PEFY-P24,27NMAU-E4, PEFY-P18NMAU-E5

External static pressure : 150Pa [0.60in.WG]

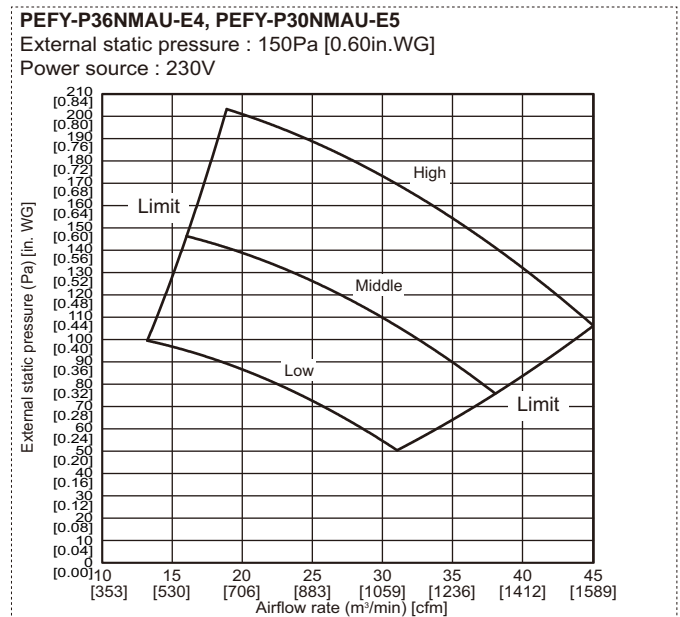
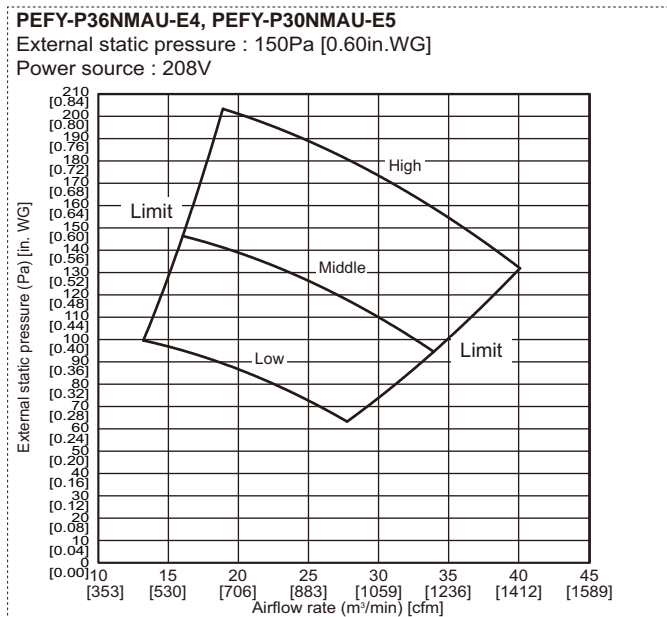
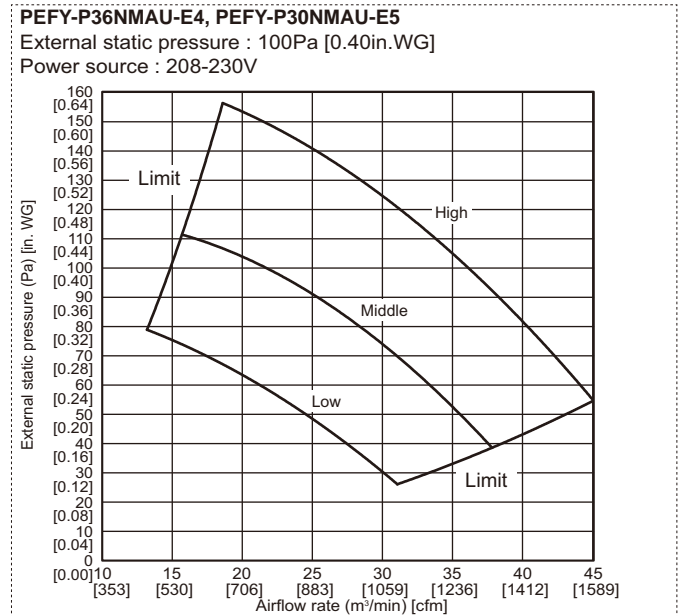
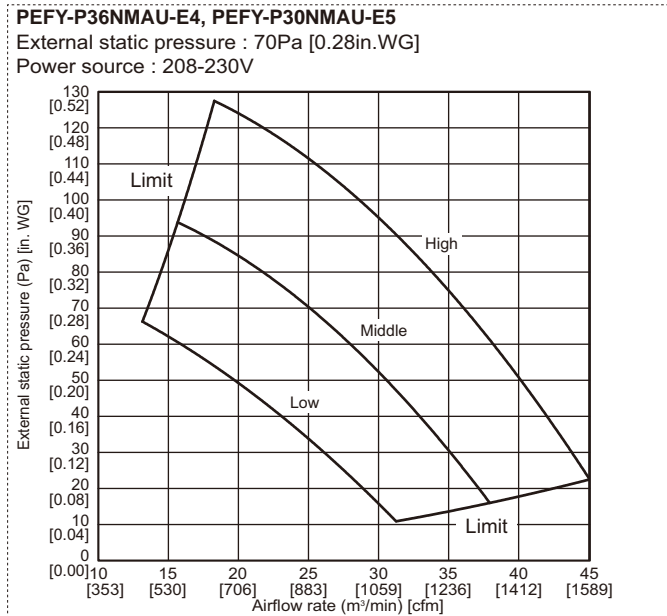
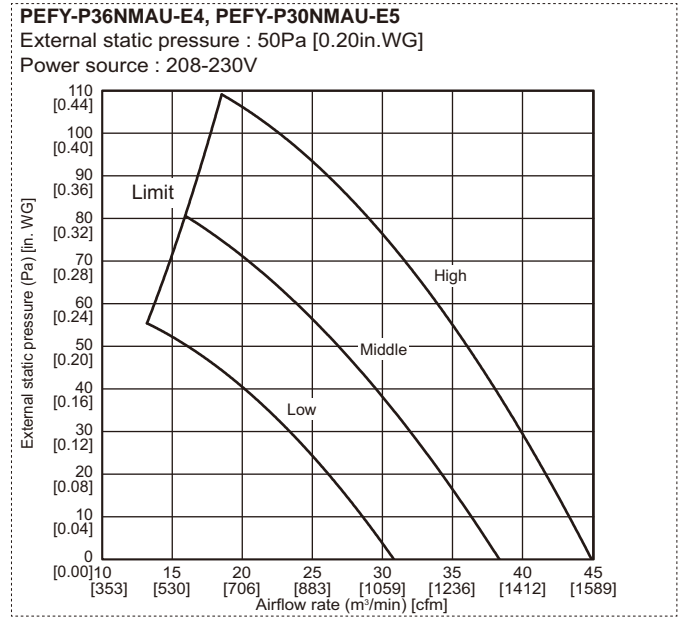
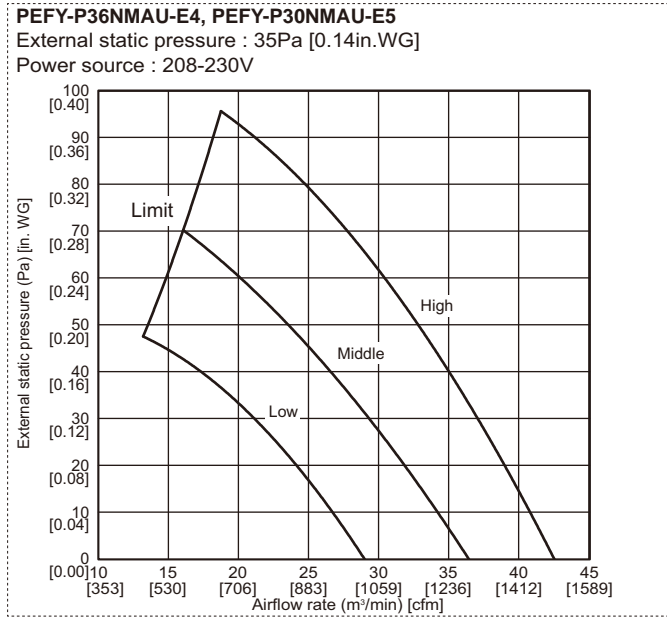
Power source : 208-230V



# 6. FAN CHARACTERISTICS CURVES

Ceiling concealed (Medium static pressure type)

PEFY-P-NMAU-E4/E5



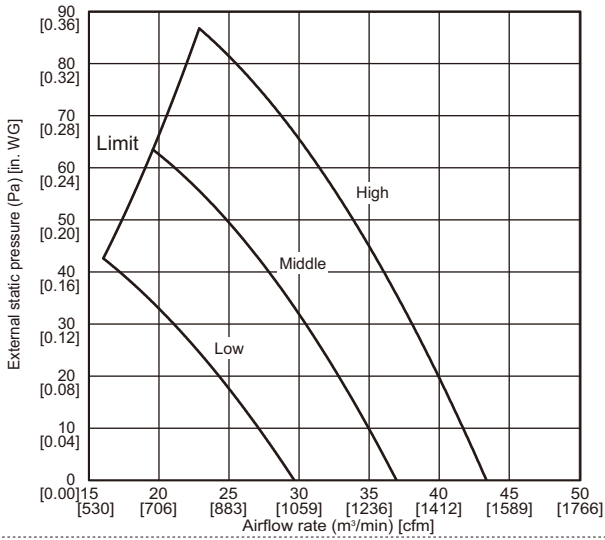
## 6. FAN CHARACTERISTICS CURVES

Ceiling concealed (Medium static pressure type)

PEFY-P-NMAU-E4/E5

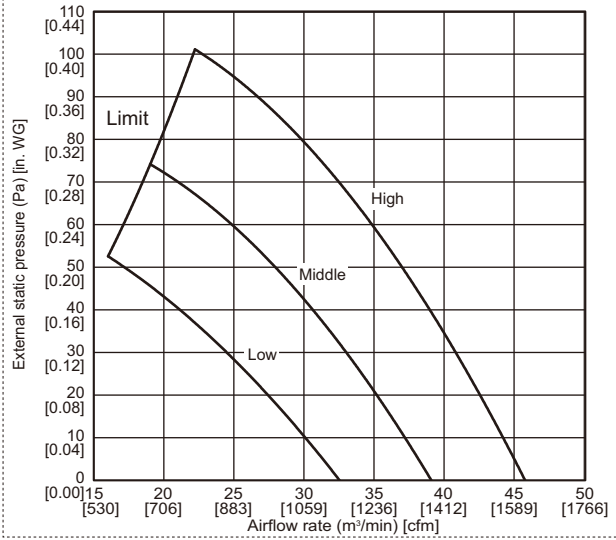
### PEFY-P48NMAU-E4

External static pressure : 35Pa [0.14in.WG]  
Power source : 208-230V



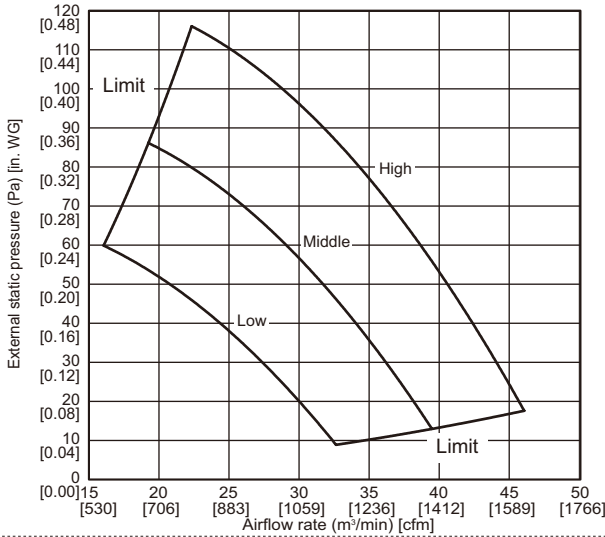
### PEFY-P48NMAU-E4

External static pressure : 50Pa [0.20in.WG]  
Power source : 208-230V



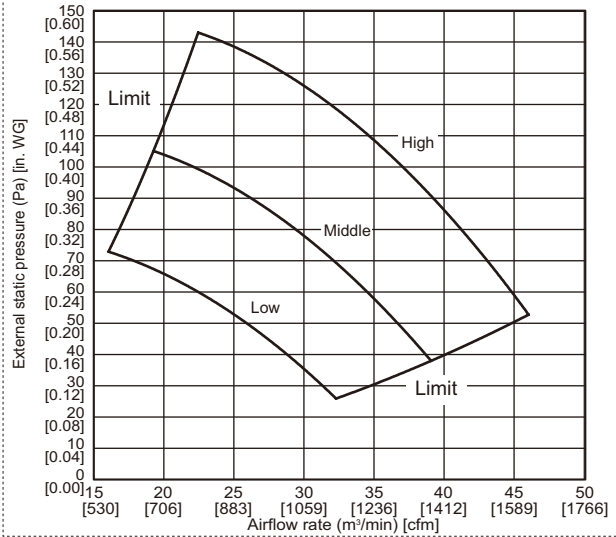
### PEFY-P48NMAU-E4

External static pressure : 70Pa [0.28in.WG]  
Power source : 208-230V



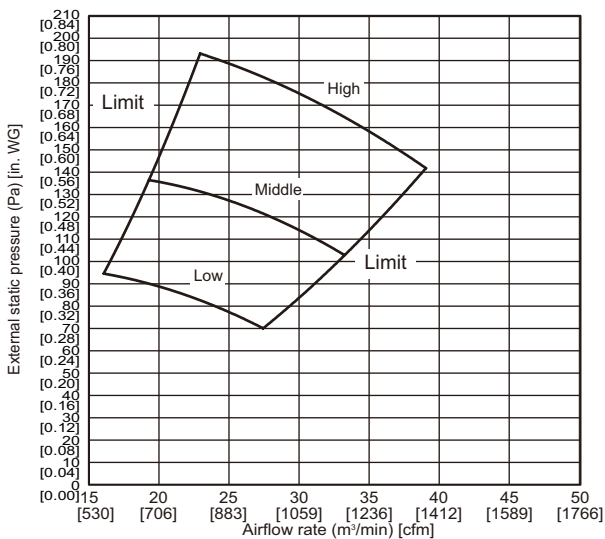
### PEFY-P48NMAU-E4

External static pressure : 100Pa [0.40in.WG]  
Power source : 208-230V



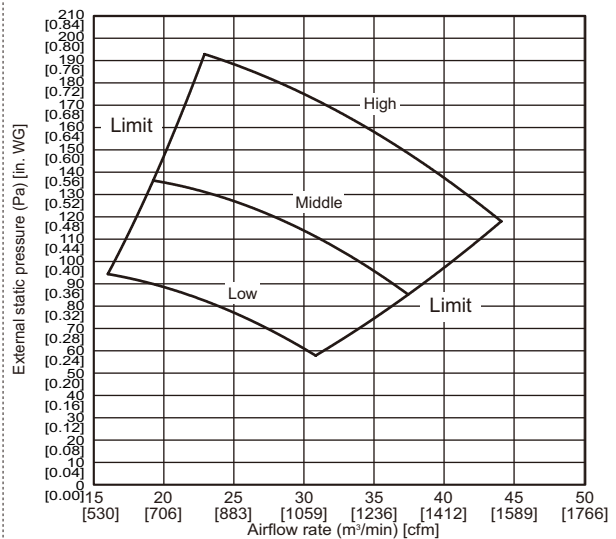
### PEFY-P48NMAU-E4

External static pressure : 150Pa [0.60in.WG]  
Power source : 208V



### PEFY-P48NMAU-E4

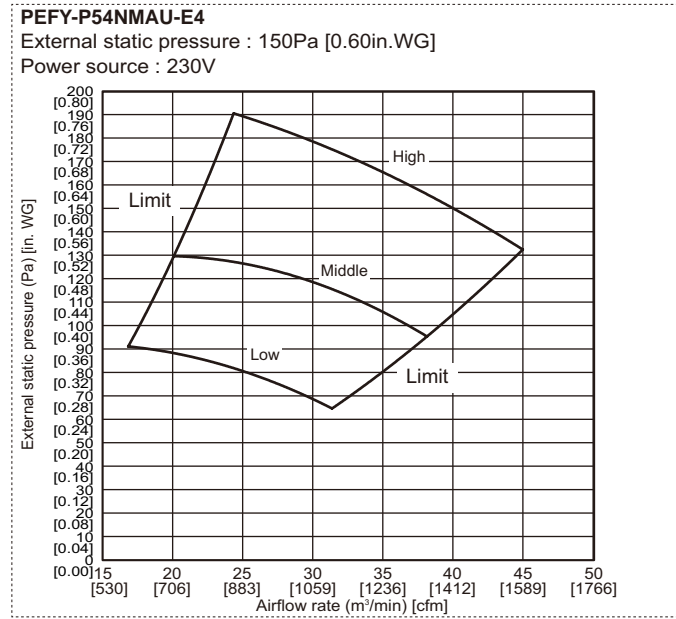
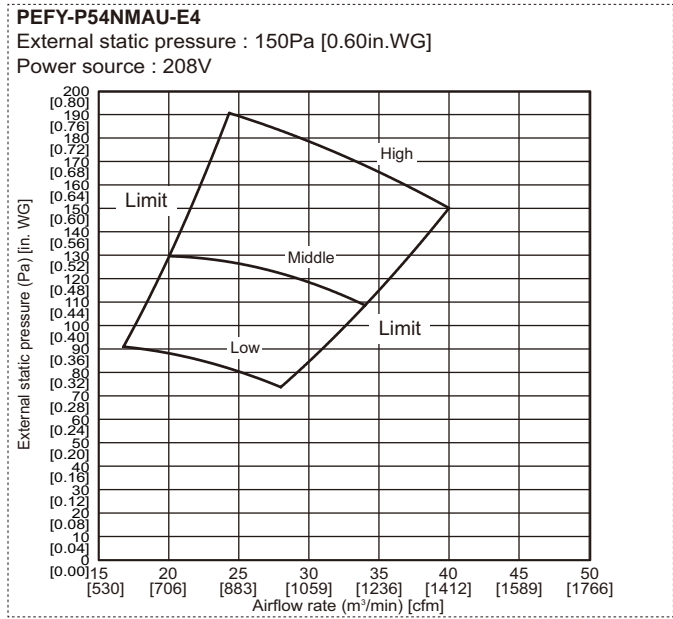
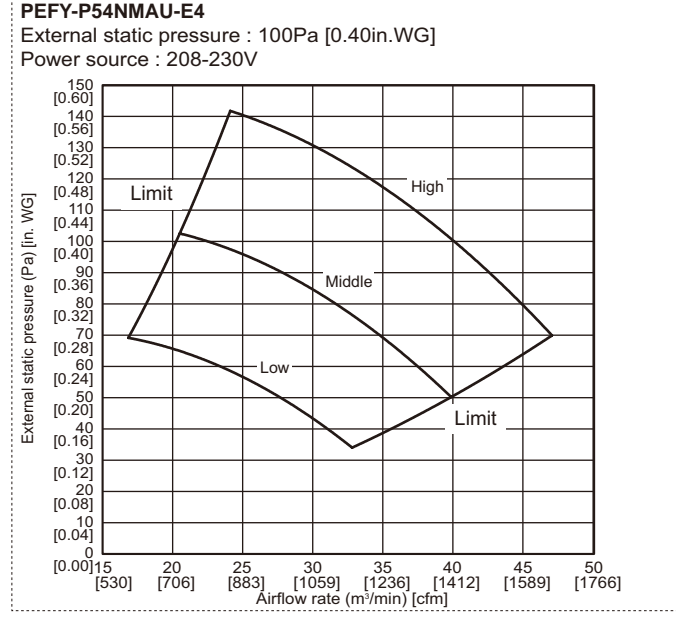
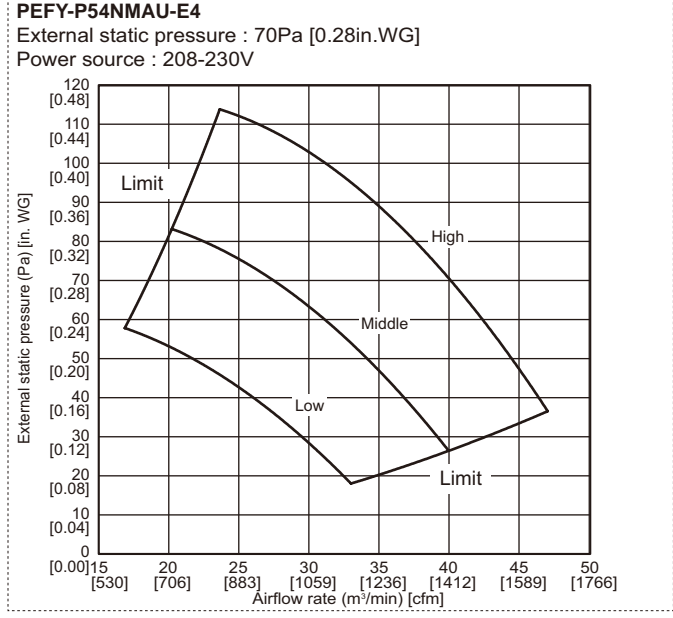
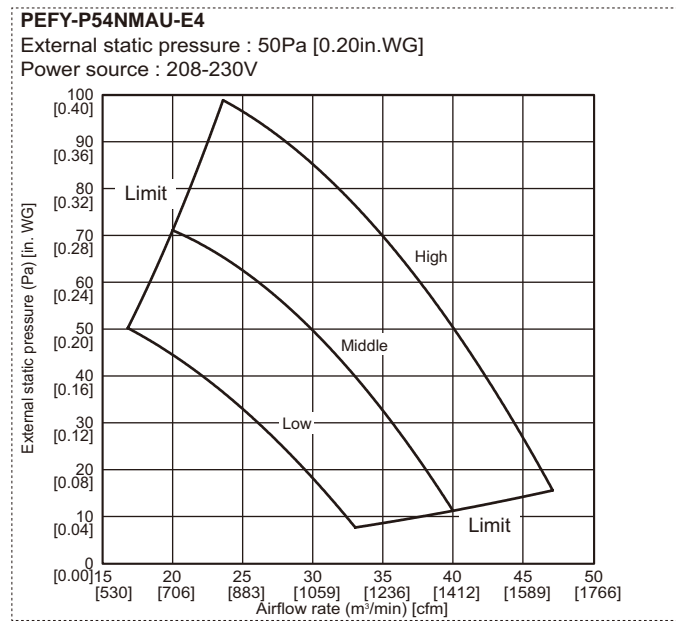
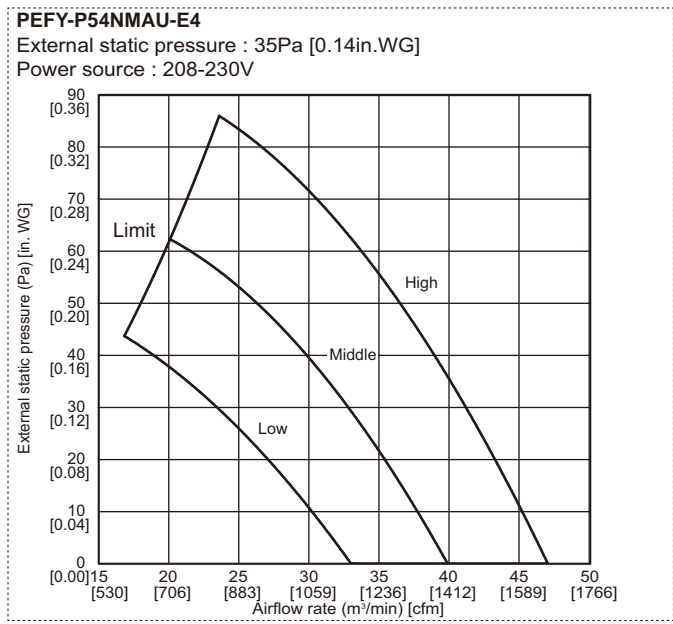
External static pressure : 150Pa [0.60in.WG]  
Power source : 230V



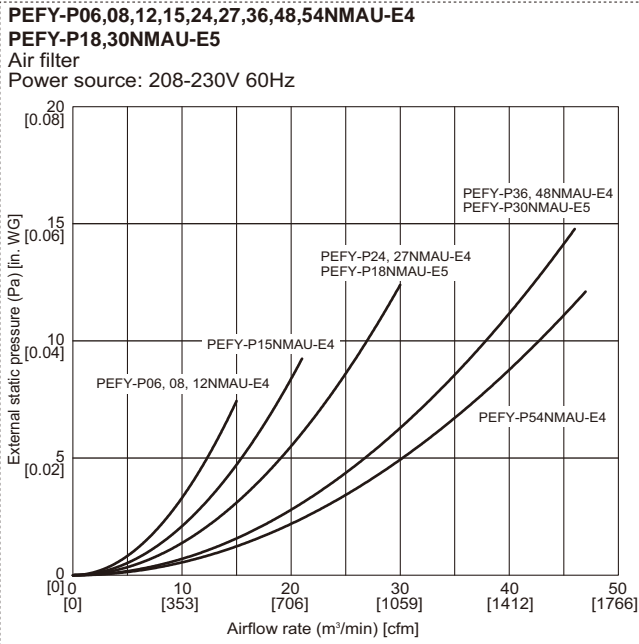
# 6. FAN CHARACTERISTICS CURVES

Ceiling concealed (Medium static pressure type)

PEFY-P-NMAU-E4/ES

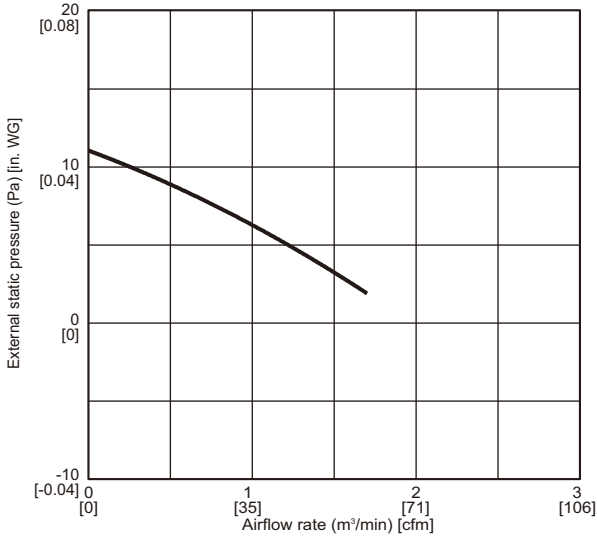


Air filter static pressure curves

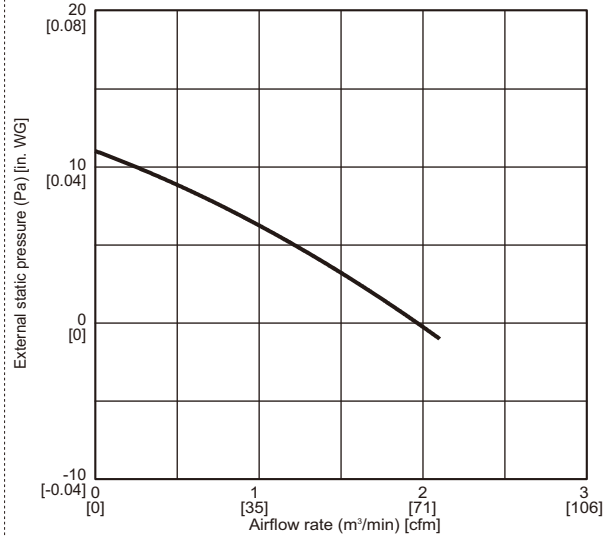


PEFY-P-NMAU-E4/E5

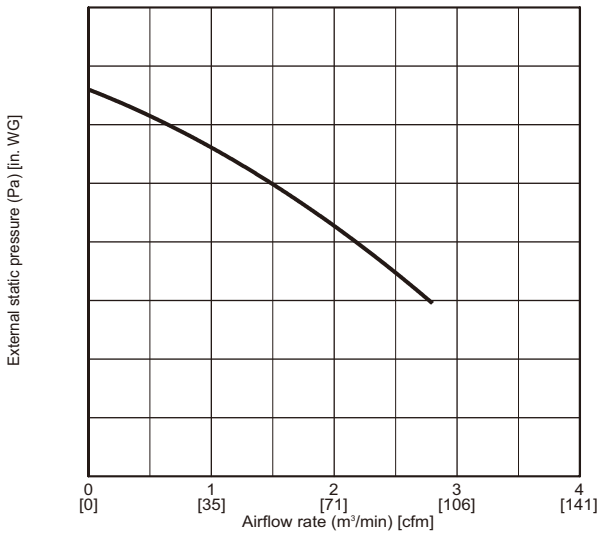
PEFY-P06,08NMAU-E4



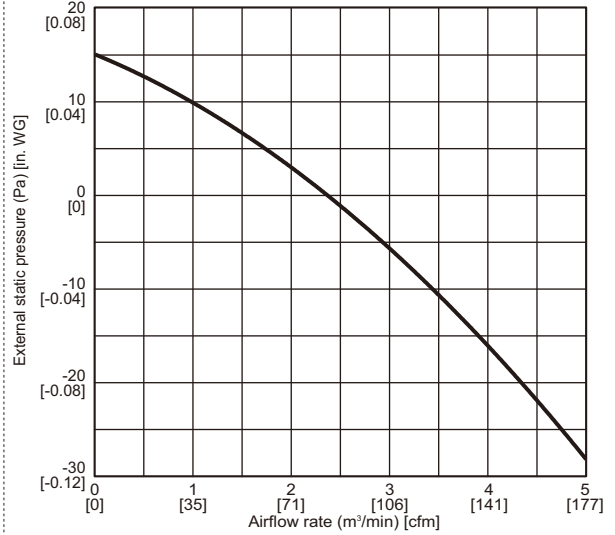
PEFY-P12NMAU-E4



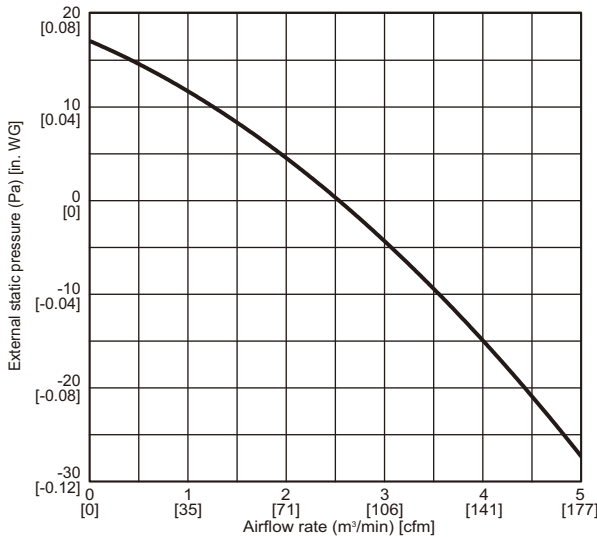
PEFY-P15NMAU-E4



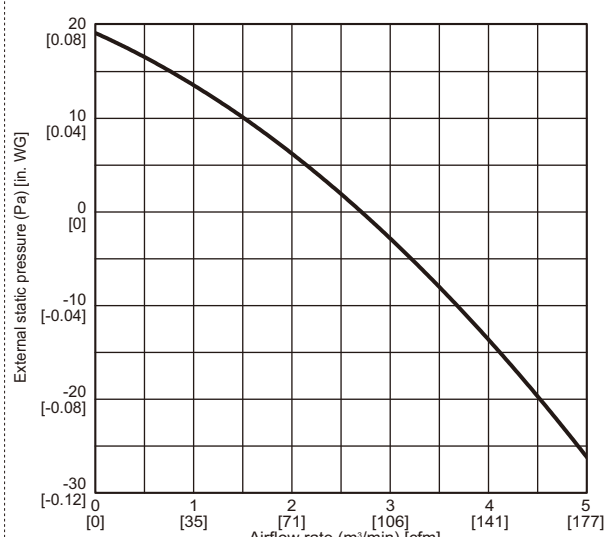
PEFY-P24,27NMAU-E4  
PEFY-P18NMAU-E5



PEFY-P36,48NMAU-E4  
PEFY-P30NMAU-E5



PEFY-P54NMAU-E4





## 8. ELECTRICAL CHARACTERISTICS

Ceiling concealed (Medium static pressure type)

Symbols: MCA: Minimum Circuit Ampacity (=1.25xFLA) FLA: Full Load Amps

IFM: Indoor Fan Motor Output: Fan motor rated output

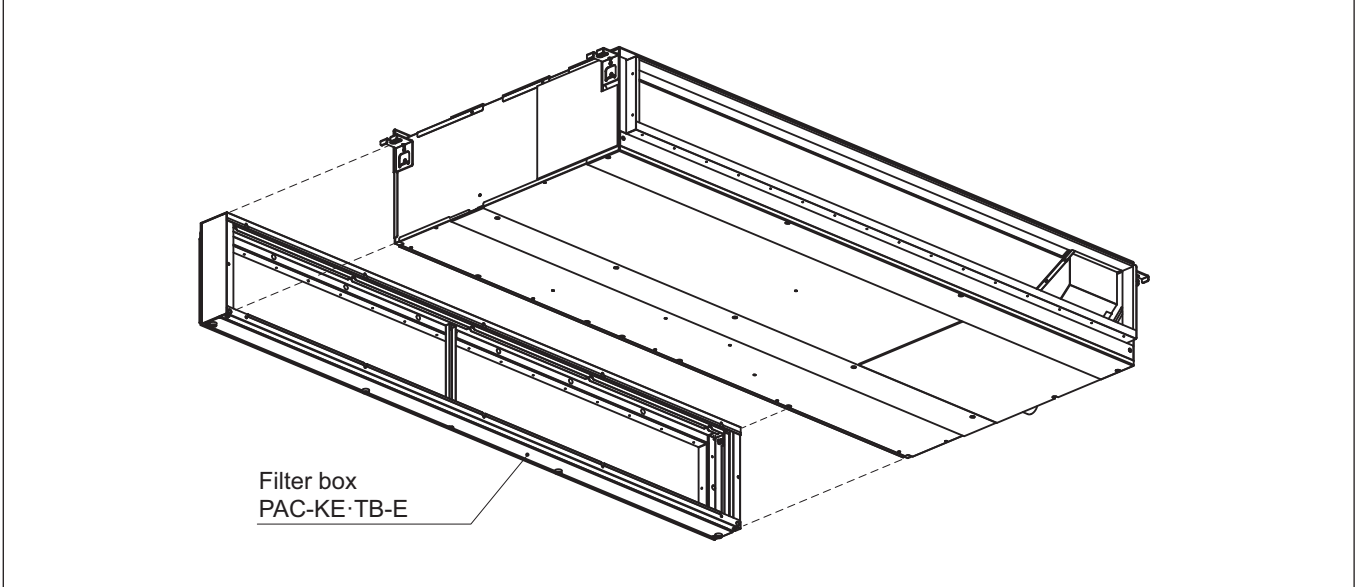
Model	Indoor Unit			IFM		
	Hz	Volts	Voltage range	MCA(A)	Output(kW)	FLA(A)
PEFY-P06NMAU-E4	60Hz	208 / 230V	188 to 253V	1.75	0.085	1.40
PEFY-P08NMAU-E4				1.75	0.085	1.40
PEFY-P12NMAU-E4				2.13	0.085	1.70
PEFY-P15NMAU-E4				2.88	0.121	2.30
PEFY-P18NMAU-E5				2.88	0.121	2.30
PEFY-P24NMAU-E4				2.88	0.121	2.30
PEFY-P27NMAU-E4				2.88	0.121	2.30
PEFY-P30NMAU-E5				4.25	0.300	3.40
PEFY-P36NMAU-E4				4.25	0.300	3.40
PEFY-P48NMAU-E4				4.38	0.300	3.50
PEFY-P54NMAU-E4				4.38	0.300	3.50

PEFY-P-NMAU-E4/E5

9-1. Optional parts line up for the Indoor unit


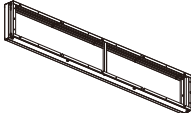
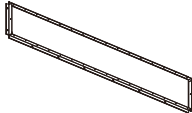
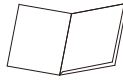
	Filter box	External heater adapter
PEFY-P06, 08, 12NMAU-E4	PAC-KE91TB-E	PAC-YU25HT
PEFY-P15NMAU-E4	PAC-KE92TB-E	PAC-YU25HT
PEFY-P24, 27NMAU-E4, PEFY-P18NMAU-E5	PAC-KE93TB-E	PAC-YU25HT
PEFY-P36, 48NMAU-E4, PEFY-P30NMAU-E5	PAC-KE94TB-E	PAC-YU25HT
PEFY-P54NMAU-E4	PAC-KE95TB-E	PAC-YU25HT

● PEFY-P-NMAU-E4/E5



9-2. Filter box

PAC-KE-TB-E

Item	1 Screw	2 Filter box	3 FLANGE	4 Installation manual	
Quantity	PAC-KE91TB-E: 20 PAC-KE92, 93TB-E: 24 PAC-KE94, 95TB-E: 30	1	1	1	
Shape					

Detailed installation information should be referred to its Installation Manual.

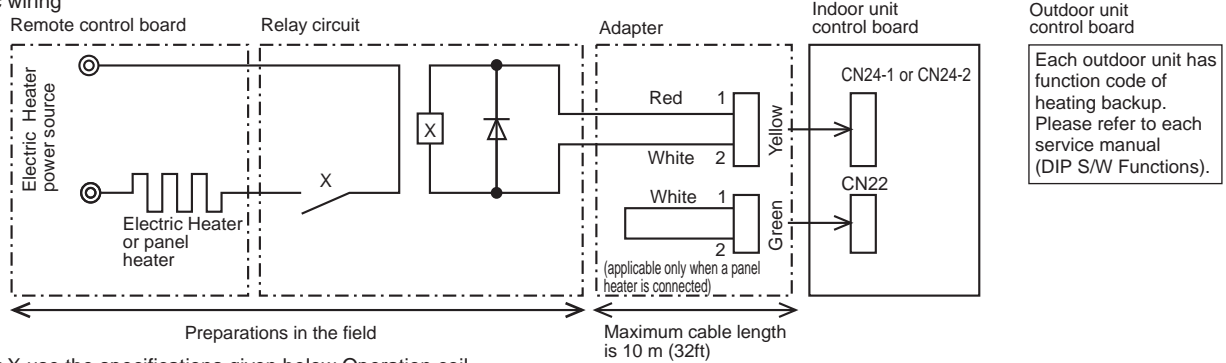
### 9-3. External heater adapter

PEFY-P-NMAU-E4/E5

External heater adapter PAC-YU25HT is a set of special wiring parts for controlling the electric heater\* with the air conditioner system.  
 \*The electric heater should be designed and prepared at the site.

A basic connection method is shown as follows:(For details, refer to its Installation Manual.)

(1) Basic wiring



For relay X use the specifications given below Operation coil  
 Rated voltage : 12VDC  
 Power consumption : 1W or less

\* Use the diode that is recommended by the relay manufacturer at both ends of the relay coil.

The length of the electrical wiring for the PAC-YU25HT is 2 meters (6-1/2 ft).

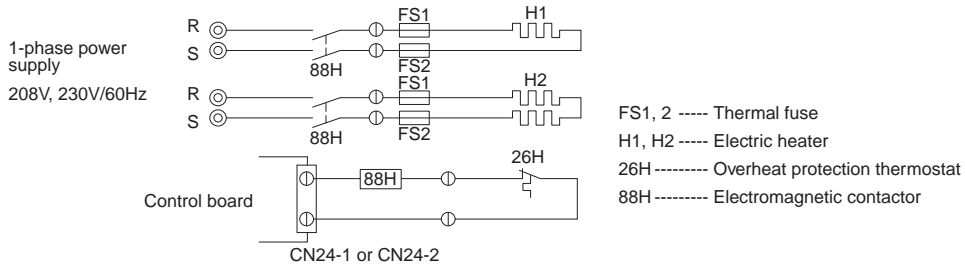
To extend this length, use sheathed 2-core cable.

Control cable type : CVV, CVS, CPEV or equivalent.

Cable size : 0.5 mm<sup>2</sup> ~ 1.25 mm<sup>2</sup> (16 to 22 AWG)

Don't extend the cable more than 10 meters (32ft).

(2) Recommended circuit



FS1, 2 ----- Thermal fuse  
 H1, H2 ----- Electric heater  
 26H ----- Overheat protection thermostat  
 88H ----- Electromagnetic contactor

Item	① External output cable	② Connector (for use with the panel heater)	
Quantity	2	3	
Shape			

Wiring details and Installation details should be referred to its Installation Manual.

**⚠ Warning**

Do not use refrigerant other than the type indicated in the manuals provided with the unit and on the nameplate.

- Doing so may cause the unit or pipes to burst, or result in explosion or fire during use, repair, or at the time of disposal of the unit.

- It may also be in violation of applicable laws.

- MITSUBISHI ELECTRIC CORPORATION cannot be held responsible for malfunctions or accidents resulting from the use of the wrong type of refrigerant.

Our air conditioning equipment and heat pumps contain a fluorinated greenhouse gas, R410A.

**mitsubishi** **ELECTRIC CORPORATION**

[www.MitsubishiElectric.com](http://www.MitsubishiElectric.com)