

AIR CONDITIONING SYSTEMS

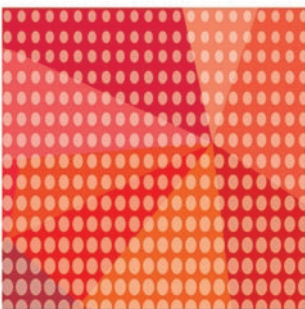
**HYBRID**  
CITY MULTI



# DATA BOOK

MODEL

**PLFY-WL-NEMU-E**



**PLFY-WL-NEMU-E**

|  |    |
|--|----|
| 1. SPECIFICATIONS .....                              | 2  |
| 2. EXTERNAL DIMENSIONS .....                         | 5  |
| 3. CENTER OF GRAVITY .....                           | 6  |
| 4. ELECTRICAL WIRING DIAGRAMS .....                  | 7  |
| 5. SOUND LEVELS .....                                | 8  |
| 5-1. Sound levels .....                              | 8  |
| 5-2. NC curves .....                                 | 8  |
| 6. TEMPERATURE/AIRFLOW DISTRIBUTIONS.....            | 9  |
| 6-1. Temperature distributions .....                 | 9  |
| 6-2. Airflow distributions .....                     | 10 |
| 7. OUTDOOR AIR INTAKE AMOUNT & STATIC PRESSURE ..... | 11 |
| 8. ELECTRICAL CHARACTERISTICS .....                  | 13 |
| 9. OPTIONAL PARTS .....                              | 14 |
| 9-1. Optional parts line up for the Indoor unit..... | 14 |
| 9-2. Air outlet shutter plate .....                  | 14 |
| 9-3. High efficiency filter element.....             | 15 |
| 9-4. Multi-function casement.....                    | 15 |
| 9-5. 3D i-see Sensor corner panel .....              | 15 |
| 9-6. Wireless signal receiver.....                   | 16 |
| 9-7. Flange for fresh air intake .....               | 16 |
| 9-8. External heater adapter .....                   | 17 |

# 1. SPECIFICATIONS

Ceiling cassette (4-way flow type)

PLFY-WL-NEMU-E

| Model  |                                  | PLFY-WL06NEMU-E  |  | PLFY-WL08NEMU-E               |                              | PLFY-WL12NEMU-E               |               |  |
|--|----------------------------------|--|--|-------------------------------|------------------------------|-------------------------------|---------------|--|
| Power source                                     |                                  | 1-phase 208-230 V 60Hz   |  |                               |                              |                               |               |  |
| Cooling capacity                                 | *1                               | BTU/h  | 6,000  | 8,000                         | 12,000                       |                               |               |  |
|  | *1                               | kW   | 1.8  | 2.3                           | 3.5                          |                               |               |  |
|  |                                  | Power input  | kW   | 0.03                          | 0.03                         | 0.03                          |               |  |
|  |                                  | Current input  | A  | 0.26                          | 0.29                         | 0.33                          |               |  |
| Heating capacity                                 | *2                               | BTU/h  | 6,700  | 9,000                         | 13,500                       |                               |               |  |
|  | *2                               | kW   | 2.0  | 2.6                           | 4.0                          |                               |               |  |
|  |                                  | Power input  | kW   | 0.03                          | 0.03                         | 0.03                          |               |  |
|  |                                  | Current input  | A  | 0.20                          | 0.23                         | 0.27                          |               |  |
| External finish                                  |                                  | Galvanized steel plate   |  |                               |                              |                               |               |  |
| External dimension H × W × D                     |                                  | inch   | 10-3/16 × 33-2/32 × 33-2/32                            | 10-3/16 × 33-2/32 × 33-2/32   | 10-3/16 × 33-2/32 × 33-2/32  |                               |               |  |
|  |                                  | mm   | 258 × 840 × 840  | 258 × 840 × 840               | 258 × 840 × 840              |                               |               |  |
| Net weight                                       |                                  | lbs (kg)   | 40 (18)  | 40 (18)                       | 44 (20)                      |                               |               |  |
| Decoration panel                                 | Model                            |  | PLP-41EAEU   |                               | PLP-41EAEU                   |                               | PLP-41EAEU    |  |
|  | External finish                  |  | MUNSELL (1.0Y 9.2/0.2)                                 |                               |                              |                               |               |  |
|  | Dimension                        |  | inch   | 1-9/16 × 37-13/32 × 37-13/32  | 1-9/16 × 37-13/32 × 37-13/32 | 1-9/16 × 37-13/32 × 37-13/32  |               |  |
|  | H × W × D                        |  | mm   | 40 × 950 × 950                | 40 × 950 × 950               | 40 × 950 × 950                |               |  |
|  | Net weight                       |  | lbs (kg)   | 11 (5)                        | 11 (5)                       | 11 (5)                        |               |  |
| Heat exchanger                                   |                                  | Cross fin (Aluminum fin and copper tube)   |  |                               |                              |                               |               |  |
| Water Volume                                     |                                  | L  | 1.0  | 1.0                           | 1.8                          |                               |               |  |
| FAN  | Type × Quantity                  |  | Turbo Fan × 1  |                               | Turbo Fan × 1                |                               | Turbo Fan × 1 |  |
|  | External static press.           | in.WG  | 0  | 0                             | 0                            |                               |               |  |
|  |                                  | Pa   | 0  | 0                             | 0                            |                               |               |  |
|  | Motor Type                       |  | DC motor   |                               |                              |                               |               |  |
|  | Motor output                     | kW   | 0.05   | 0.05                          | 0.05                         |                               |               |  |
|  | Driving mechanism                |  | Direct-driven  |                               |                              |                               |               |  |
|  | Air flow rate                    |  |  | (Low-Mid2-Mid1-High)          | (Low-Mid2-Mid1-High)         | (Low-Mid2-Mid1-High)          |               |  |
|  |                                  | cfm  |  | 424-459-494-530               | 424-459-530-600              | 494-530-565-600               |               |  |
| m <sup>3</sup> /min                              |                                  | 12-13-14-15  | 12-13-15-17  | 14-15-16-17                   |                              |                               |               |  |
| L/s  |                                  | 200-217-233-250  | 200-217-250-283  | 233-250-267-283               |                              |                               |               |  |
| Sound pressure level (measured in anechoic room) |                                  | (Low-Mid2-Mid1-High)   |  | (Low-Mid2-Mid1-High)          | (Low-Mid2-Mid1-High)         |                               |               |  |
| dB <A>   |                                  | 24-26-27-28  | 24-26-28-30  | 26-27-29-30                   |                              |                               |               |  |
| Insulation material                              |                                  | PS   |  |                               |                              |                               |               |  |
| Air filter                                       |                                  | PP honeycomb (long life filter, anti-bacterial type)   |  |                               |                              |                               |               |  |
| Protection device                                |                                  | Fuse   |  |                               |                              |                               |               |  |
| Refrigerant control device                       |                                  | -  |  |                               |                              |                               |               |  |
| Connectable HBC controller                       |                                  | CMB-WP-NU-AA,<br>CMB-WP-NU-AB  |  | CMB-WP-NU-AA,<br>CMB-WP-NU-AB |                              | CMB-WP-NU-AA,<br>CMB-WP-NU-AB |               |  |
| Water piping diameter *3, 4                      | Connection size                  | Inlet  | mm O.D.  | 22                            | 22                           | 22                            |               |  |
|  |                                  | Outlet   | mm O.D.  | 22                            | 22                           | 22                            |               |  |
|  | Field pipe size                  | Inlet  | mm I.D.  | 20                            | 20                           | 20                            |               |  |
|  |                                  | Outlet   | mm I.D.  | 20                            | 20                           | 20                            |               |  |
| Field drain pipe size                            |                                  | inch (mm)  | O.D. 1-1/4 (32)  | O.D. 1-1/4 (32)               | O.D. 1-1/4 (32)              |                               |               |  |
| Drawing  | External                         |  | VK01B213   |                               | VK01B213                     |                               | VK01B213      |  |
|  | Wiring                           |  | VM79A839   |                               | VM79A839                     |                               | VM79A839      |  |
|  | Refrigerant cycle                |  | -  |                               | -                            |                               | -             |  |
| Standard attachment                              | Document                         |  | Installation Manual, Instruction Book                  |                               |                              |                               |               |  |
|  | Accessory                        |  | Insulation template,<br>Washer, Drain socket, Tie band |                               |                              |                               |               |  |
| Optional parts                                   | 3D i-see Sensor corner panel     |  | PLP-41EAEU   |                               | PLP-41EAEU                   |                               | PLP-41EAEU    |  |
|  | Multi-functional casement        |  | PAC-SJ41TM-E   |                               | PAC-SJ41TM-E                 |                               | PAC-SJ41TM-E  |  |
|  | High-efficiency filter element   |  | PAC-SH59KF-E   |                               | PAC-SH59KF-E                 |                               | PAC-SH59KF-E  |  |
|  | Air outlet shutter plate (1 set) |  | PAC-SJ37SP-E   |                               | PAC-SJ37SP-E                 |                               | PAC-SJ37SP-E  |  |
|  | Flange for fresh air intake      |  | PAC-SH65OF-E   |                               | PAC-SH65OF-E                 |                               | PAC-SH65OF-E  |  |
|  | Wireless signal receiver         |  | PAR-SR4LU-E  |                               | PAR-SR4LU-E                  |                               | PAR-SR4LU-E   |  |
|  | External heater adapter          |  | PAC-YU25HT   |                               | PAC-YU25HT                   |                               | PAC-YU25HT    |  |
| Remarks  |                                  | * Details on foundation work, duct work, insulation work, electrical wiring, power source switch, and other items shall be referred to the Installation Manual.<br>* Due to continuing improvement, above specification may be subject to change without notice. |  |                               |                              |                               |               |  |

| Notes:   | Unit converter  |
|--|---|
| 1. Nominal cooling conditions<br>Indoor: 80°F D.B./67°F W.B. (26.7°C D.B./19.4°C W.B.), Outdoor: 95°F D.B. (35°C D.B.)<br>Pipe length: 25 ft. (7.6 m), Level difference: 0 ft. (0 m) | BTU/h = kW × 3.412<br>cfm = m <sup>3</sup> /min × 35.31<br>lbs = kg/0.4536<br><br>*Above specification data is subject to rounding variation. |
| 2. Nominal heating conditions<br>Indoor: 70°F D.B. (21.1°C D.B.), Outdoor: 47°F D.B./43°F W.B. (8.3°C D.B./6.1°C W.B.)<br>Pipe length: 25 ft. (7.6 m), Level difference: 0 ft. (0 m) |   |
| 3. Be sure to install a valve on the water inlet/outlet.   |   |
| 4. Install a strainer (40 mesh or more) on the pipe next to the valve to remove the foreign matters.   |   |

# 1. SPECIFICATIONS

Ceiling cassette (4-way flow type)

| Model  |                                  |  | PLFY-WL15NEMU-E  | PLFY-WL18NEMU-E               | PLFY-WL24NEMU-E               |                      |
|--|----------------------------------|--|--|-------------------------------|-------------------------------|----------------------|
| Power source                                     |                                  |  | 1-phase 208-230 V 60Hz   |                               |                               |                      |
| Cooling capacity                                 | *1                               | BTU/h  | 15,000   | 18,000                        | 24,000                        |                      |
|  | *1                               | kW   | 4.4  | 5.3                           | 7.0                           |                      |
|  |                                  | Power input  | kW   | 0.03                          | 0.04                          |                      |
|  |                                  | Current input  | A  | 0.35                          | 0.40                          |                      |
| Heating capacity                                 | *2                               | BTU/h  | 17,000   | 20,000                        | 27,000                        |                      |
|  | *2                               | kW   | 5.0  | 5.9                           | 7.9                           |                      |
|  |                                  | Power input  | kW   | 0.03                          | 0.04                          |                      |
|  |                                  | Current input  | A  | 0.29                          | 0.34                          |                      |
| External finish                                  |                                  |  | Galvanized steel plate   |                               |                               |                      |
| External dimension H × W × D                     |                                  | inch   | 10-3/16 × 33-2/32 × 33-2/32  | 10-3/16 × 33-2/32 × 33-2/32   | 11-3/4 × 33-3/32 × 33-3/32    |                      |
|  |                                  | mm   | 258 × 840 × 840  | 258 × 840 × 840               | 298 × 840 × 840               |                      |
| Net weight                                       |                                  | lbs (kg)   | 44 (20)  | 44 (20)                       | 51 (23)                       |                      |
| Decoration panel                                 | Model                            |  | PLP-41EAEU   | PLP-41EAEU                    | PLP-41EAEU                    |                      |
|  | External finish                  |  | MUNSELL (1.0Y 9.2/0.2)   |                               |                               |                      |
|  | Dimension                        | inch   | 1-9/16 × 37-13/32 × 37-13/32   | 1-9/16 × 37-13/32 × 37-13/32  | 1-9/16 × 37-13/32 × 37-13/32  |                      |
|  |                                  | mm   | 40 × 950 × 950   | 40 × 950 × 950                | 40 × 950 × 950                |                      |
|  | Net weight                       |  | lbs (kg)   | 11 (5)                        | 11 (5)                        |                      |
| Heat exchanger                                   |                                  | Cross fin (Aluminum fin and copper tube)             |  |                               |                               |                      |
| Water Volume                                     |                                  | L  | 1.8  | 1.8                           | 2.1                           |                      |
| FAN  | Type × Quantity                  |  | Turbo Fan × 1  |                               |                               |                      |
|  | External static press.           | in.WG  | 0  | 0                             | 0                             |                      |
|  |                                  | Pa   | 0  | 0                             | 0                             |                      |
|  | Motor Type                       |  | DC motor   |                               |                               |                      |
|  | Motor output                     | kW   | 0.05   | 0.05                          | 0.12                          |                      |
|  | Driving mechanism                |  | Direct-driven  |                               |                               |                      |
|  | Air flow rate                    |  |  | (Low-Mid2-Mid1-High)          | (Low-Mid2-Mid1-High)          | (Low-Mid2-Mid1-High) |
|  |                                  | cfm  | 494-530-565-600  |                               | 494-565-636-706               | 530-600-671-742      |
| m <sup>3</sup> /min                              |                                  |  | 14-15-16-17  | 14-16-18-20                   | 15-17-19-21                   |                      |
| L/s  |                                  |  | 233-250-267-283  | 233-267-300-333               | 250-283-317-350               |                      |
| Sound pressure level (measured in anechoic room) |                                  | (Low-Mid2-Mid1-High)                                 |  | (Low-Mid2-Mid1-High)          | (Low-Mid2-Mid1-High)          |                      |
| dB <A>   |                                  | 26-28-29-31  | 27-29-31-33  | 27-29-31-33                   |                               |                      |
| Insulation material                              |                                  | PS   |  |                               |                               |                      |
| Air filter                                       |                                  | PP honeycomb (long life filter, anti-bacterial type) |  |                               |                               |                      |
| Protection device                                |                                  | Fuse   |  |                               |                               |                      |
| Refrigerant control device                       |                                  | -  |  |                               |                               |                      |
| Connectable HBC controller                       |                                  | CMB-WP-NU-AA,<br>CMB-WP-NU-AB                        |  | CMB-WP-NU-AA,<br>CMB-WP-NU-AB | CMB-WP-NU-AA,<br>CMB-WP-NU-AB |                      |
| Water piping diameter *3, 4                      | Connection size                  | Inlet  | mm O.D.  | 22                            | 22                            | 22                   |
|  |                                  | Outlet   | mm O.D.  | 22                            | 22                            | 22                   |
|  | Field pipe size                  | Inlet  | mm I.D.  | 20                            | 20                            | 30                   |
|  |                                  | Outlet   | mm I.D.  | 20                            | 20                            | 30                   |
|  | Field drain pipe size            |  | inch (mm)  | O.D. 1-1/4 (32)               | O.D. 1-1/4 (32)               | O.D. 1-1/4 (32)      |
| Drawing  | External                         |  | VK01B213   |                               |                               |                      |
|  | Wiring                           |  | VM79A839   |                               |                               |                      |
|  | Refrigerant cycle                |  | -  |                               |                               |                      |
| Standard attachment                              | Document                         |  | Installation Manual, Instruction Book  |                               |                               |                      |
|  | Accessory                        |  | Insulation template,<br>Washer, Drain socket, Tie band   |                               |                               |                      |
| Optional parts                                   | 3D i-see Sensor corner panel     |  | PLP-41EAEU   | PLP-41EAEU                    | PLP-41EAEU                    |                      |
|  | Multi-functional casement        |  | PAC-SJ41TM-E   | PAC-SJ41TM-E                  | PAC-SJ41TM-E                  |                      |
|  | High-efficiency filter element   |  | PAC-SH59KF-E   | PAC-SH59KF-E                  | PAC-SH59KF-E                  |                      |
|  | Air outlet shutter plate (1 set) |  | PAC-SJ37SP-E   | PAC-SJ37SP-E                  | PAC-SJ37SP-E                  |                      |
|  | Flange for fresh air intake      |  | PAC-SH65OF-E   | PAC-SH65OF-E                  | PAC-SH65OF-E                  |                      |
|  | Wireless signal receiver         |  | PAR-SR4LU-E  | PAR-SR4LU-E                   | PAR-SR4LU-E                   |                      |
|  | External heater adapter          |  | PAC-YU25HT   | PAC-YU25HT                    | PAC-YU25HT                    |                      |
| Remarks  |                                  |  | * Details on foundation work, duct work, insulation work, electrical wiring, power source switch, and other items shall be referred to the Installation Manual.<br>* Due to continuing improvement, above specification may be subject to change without notice. |                               |                               |                      |

| Notes:   | Unit converter  |
|--|---|
| 1. Nominal cooling conditions<br>Indoor: 80°F D.B./67°F W.B. (26.7°C D.B./19.4°C W.B.), Outdoor: 95°F D.B. (35°C D.B.)<br>Pipe length: 25 ft. (7.6 m), Level difference: 0 ft. (0 m) | BTU/h = kW × 3.412<br>cfm = m <sup>3</sup> /min × 35.31<br>lbs = kg/0.4536<br><br>*Above specification data is subject to rounding variation. |
| 2. Nominal heating conditions<br>Indoor: 70°F D.B. (21.1°C D.B.), Outdoor: 47°F D.B./43°F W.B. (8.3°C D.B./6.1°C W.B.)<br>Pipe length: 25 ft. (7.6 m), Level difference: 0 ft. (0 m) |   |
| 3. Be sure to install a valve on the water inlet/outlet.   |   |
| 4. Install a strainer (40 mesh or more) on the pipe next to the valve to remove the foreign matters.   |   |

# 1. SPECIFICATIONS

Ceiling cassette (4-way flow type)

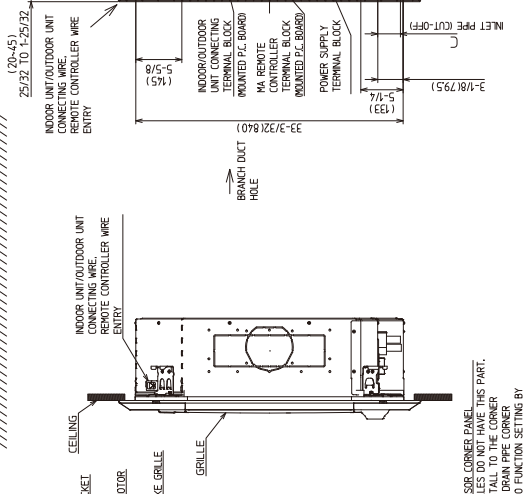
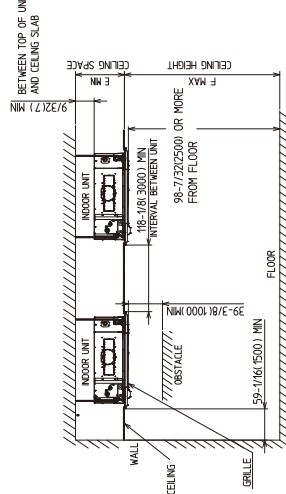
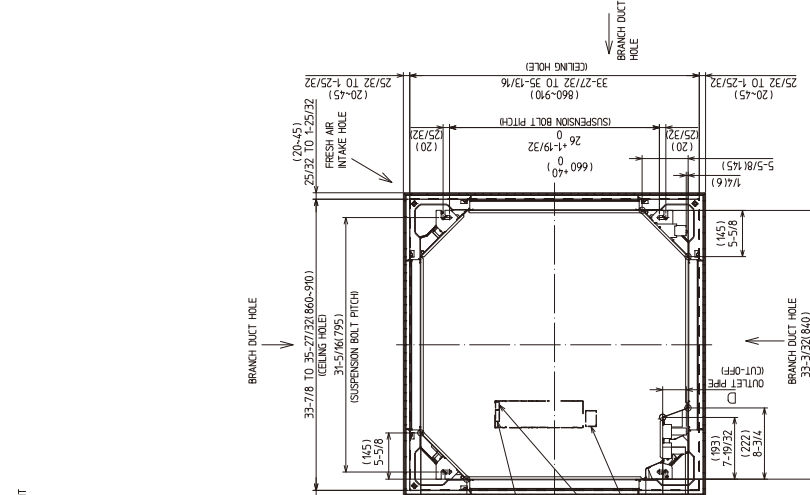
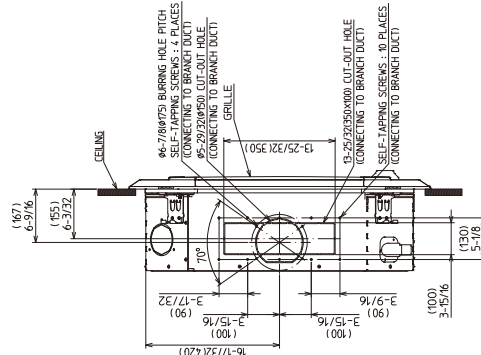
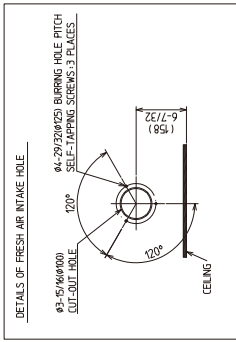
PLFY-WL-NEMU-E

| Model  |                                  | PLFY-WL30NEMU-E  |  | PLFY-WL36NEMU-E               |                              | PLFY-WL48NEMU-E               |               |  |
|--|----------------------------------|--|--|-------------------------------|------------------------------|-------------------------------|---------------|--|
| Power source                                     |                                  | 1-phase 208-230 V 60Hz   |  |                               |                              |                               |               |  |
| Cooling capacity                                 | *1                               | BTU/h  | 30,000   | 36,000                        | 48,000                       |                               |               |  |
|  | *1                               | kW   | 8.8  | 10.6                          | 14.1                         |                               |               |  |
|  |                                  | Power input  | kW   | 0.05                          | 0.08                         | 0.11                          |               |  |
|  |                                  | Current input  | A  | 0.46                          | 0.66                         | 1.05                          |               |  |
| Heating capacity                                 | *2                               | BTU/h  | 34,000   | 40,000                        | 54,000                       |                               |               |  |
|  | *2                               | kW   | 10.0   | 11.7                          | 15.8                         |                               |               |  |
|  |                                  | Power input  | kW   | 0.05                          | 0.08                         | 0.11                          |               |  |
|  |                                  | Current input  | A  | 0.40                          | 0.60                         | 0.99                          |               |  |
| External finish                                  |                                  | Galvanized steel plate   |  |                               |                              |                               |               |  |
| External dimension H × W × D                     |                                  | inch   | 11-3/4 × 33-3/32 × 33-3/32                             | 11-3/4 × 33-3/32 × 33-3/32    | 11-3/4 × 33-3/32 × 33-3/32   |                               |               |  |
|  |                                  | mm   | 298 × 840 × 840  | 298 × 840 × 840               | 298 × 840 × 840              |                               |               |  |
| Net weight                                       |                                  | lbs (kg)   | 51 (23)  | 51 (23)                       | 55 (25)                      |                               |               |  |
| Decoration panel                                 | Model                            |  | PLP-41EAEU   |                               | PLP-41EAEU                   |                               | PLP-41EAEU    |  |
|  | External finish                  |  | MUNSELL (1.0Y 9.2/0.2)                                 |                               |                              |                               |               |  |
|  | Dimension                        |  | inch   | 1-9/16 × 37-13/32 × 37-13/32  | 1-9/16 × 37-13/32 × 37-13/32 | 1-9/16 × 37-13/32 × 37-13/32  |               |  |
|  | H × W × D                        |  | mm   | 40 × 950 × 950                | 40 × 950 × 950               | 40 × 950 × 950                |               |  |
|  | Net weight                       |  | lbs (kg)   | 11 (5)                        | 11 (5)                       | 11 (5)                        |               |  |
| Heat exchanger                                   |                                  | Cross fin (Aluminum fin and copper tube)   |  |                               |                              |                               |               |  |
| Water Volume                                     |                                  | L  | 2.1  | 2.2                           | 3.1                          |                               |               |  |
| FAN  | Type × Quantity                  |  | Turbo Fan × 1  |                               | Turbo Fan × 1                |                               | Turbo Fan × 1 |  |
|  | External static press.           | in.WG  | 0  | 0                             | 0                            |                               |               |  |
|  |                                  | Pa   | 0  | 0                             | 0                            |                               |               |  |
|  | Motor Type                       |  | DC motor   |                               |                              |                               |               |  |
|  | Motor output                     | kW   | 0.12   | 0.12                          | 0.12                         |                               |               |  |
|  | Driving mechanism                |  | Direct-driven  |                               |                              |                               |               |  |
|  | Air flow rate                    |  |  | (Low-Mid2-Mid1-High)          | (Low-Mid2-Mid1-High)         | (Low-Mid2-Mid1-High)          |               |  |
|  |                                  | cfm  |  | 530-636-742-812               | 671-812-918-1059             | 706-883-1059-1236             |               |  |
| m <sup>3</sup> /min                              |                                  | 15-18-21-23  | 19-23-26-30  | 20-25-30-35                   |                              |                               |               |  |
| L/s  |                                  | 250-300-350-383  | 317-383-433-500  | 333-417-500-583               |                              |                               |               |  |
| Sound pressure level (measured in anechoic room) |                                  | (Low-Mid2-Mid1-High)   |  | (Low-Mid2-Mid1-High)          |                              | (Low-Mid2-Mid1-High)          |               |  |
| dB <A>   |                                  | 27-30-33-35  |  | 31-35-37-40                   |                              | 33-37-40-46                   |               |  |
| Insulation material                              |                                  | PS   |  |                               |                              |                               |               |  |
| Air filter                                       |                                  | PP honeycomb (long life filter, anti-bacterial type)   |  |                               |                              |                               |               |  |
| Protection device                                |                                  | Fuse   |  |                               |                              |                               |               |  |
| Refrigerant control device                       |                                  | -  |  |                               |                              |                               |               |  |
| Connectable HBC controller                       |                                  | CMB-WP-NU-AA,<br>CMB-WP-NU-AB  |  | CMB-WP-NU-AA,<br>CMB-WP-NU-AB |                              | CMB-WP-NU-AA,<br>CMB-WP-NU-AB |               |  |
| Water piping diameter *3, 4                      | Connection size                  | Inlet  | mm O.D.  | 22                            | 22                           | 22                            |               |  |
|  |                                  | Outlet   | mm O.D.  | 22                            | 22                           | 22                            |               |  |
|  | Field pipe size                  | Inlet  | mm I.D.  | 30                            | 30                           | 30                            |               |  |
|  |                                  | Outlet   | mm I.D.  | 30                            | 30                           | 30                            |               |  |
| Field drain pipe size                            |                                  | inch (mm)  | O.D. 1-1/4 (32)  | O.D. 1-1/4 (32)               | O.D. 1-1/4 (32)              |                               |               |  |
| Drawing  | External                         |  | VK01B213   |                               | VK01B213                     |                               | VK01B213      |  |
|  | Wiring                           |  | VM79A839   |                               | VM79A839                     |                               | VM79A839      |  |
|  | Refrigerant cycle                |  | -  |                               | -                            |                               | -             |  |
| Standard attachment                              | Document                         |  | Installation Manual, Instruction Book                  |                               |                              |                               |               |  |
|  | Accessory                        |  | Insulation template,<br>Washer, Drain socket, Tie band |                               |                              |                               |               |  |
| Optional parts                                   | 3D i-see Sensor corner panel     |  | PLP-41EAEU   |                               | PLP-41EAEU                   |                               | PLP-41EAEU    |  |
|  | Multi-functional casement        |  | PAC-SJ41TM-E   |                               | PAC-SJ41TM-E                 |                               | PAC-SJ41TM-E  |  |
|  | High-efficiency filter element   |  | PAC-SH59KF-E   |                               | PAC-SH59KF-E                 |                               | PAC-SH59KF-E  |  |
|  | Air outlet shutter plate (1 set) |  | PAC-SJ37SP-E   |                               | PAC-SJ37SP-E                 |                               | PAC-SJ37SP-E  |  |
|  | Flange for fresh air intake      |  | PAC-SH65OF-E   |                               | PAC-SH65OF-E                 |                               | PAC-SH65OF-E  |  |
|  | Wireless signal receiver         |  | PAR-SR4LU-E  |                               | PAR-SR4LU-E                  |                               | PAR-SR4LU-E   |  |
|  | External heater adapter          |  | PAC-YU25HT   |                               | PAC-YU25HT                   |                               | PAC-YU25HT    |  |
| Remarks  |                                  | * Details on foundation work, duct work, insulation work, electrical wiring, power source switch, and other items shall be referred to the Installation Manual.<br>* Due to continuing improvement, above specification may be subject to change without notice. |  |                               |                              |                               |               |  |

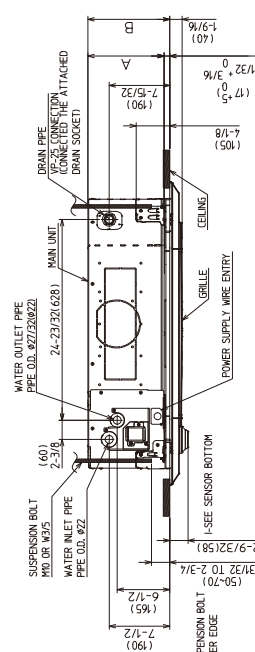
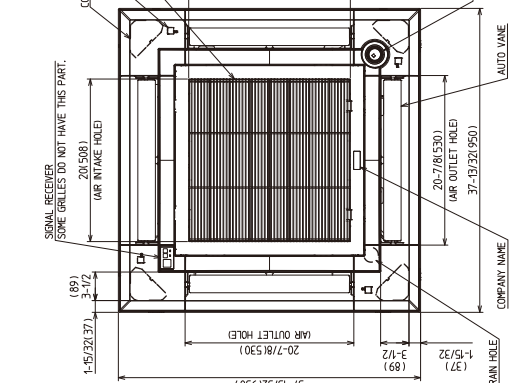
| Notes:   | Unit converter  |
|--|---|
| 1. Nominal cooling conditions<br>Indoor: 80°F D.B./67°F W.B. (26.7°C D.B./19.4°C W.B.), Outdoor: 95°F D.B. (35°C D.B.)<br>Pipe length: 25 ft. (7.6 m), Level difference: 0 ft. (0 m) | BTU/h = kW × 3.412<br>cfm = m <sup>3</sup> /min × 35.31<br>lbs = kg/0.4536<br><br>*Above specification data is subject to rounding variation. |
| 2. Nominal heating conditions<br>Indoor: 70°F D.B. (21.1°C D.B.), Outdoor: 47°F D.B./43°F W.B. (8.3°C D.B./6.1°C W.B.)<br>Pipe length: 25 ft. (7.6 m), Level difference: 0 ft. (0 m) |   |
| 3. Be sure to install a valve on the water inlet/outlet.   |   |
| 4. Install a strainer (40 mesh or more) on the pipe next to the valve to remove the foreign matters.   |   |

PLFY-WL06, 08, 12, 15, 18, 24, 30, 36, 48 NEMU-E

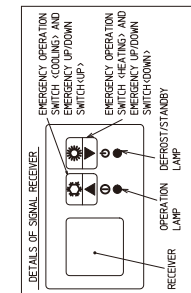
Unit: in.(mm)



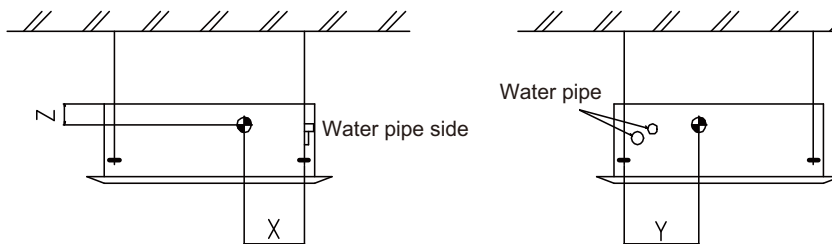
- NOTE: CHOOSE THE GRILLE AMONG THE DEDICATED GRILLES. BE SURE TO CHECK THE COMPATIBILITY OF THE GRILLE AND THE RESISTANCE AS NEEDED.
- PROLONGED AT THE LOCAL SITE).
  - FOR THE SUSPENSION BOLT, USE M10 OR M8.
  - FOR DRAIN PIPE, USE VP-25 (Ø20, Ø14/Ø19/Ø32) PVC TUBE 1).
  - BRAN PUMP INCLUSION: 1650 mm FROM THE CEILING.
  - ELECTRICAL BOX MAY BE REMOVED FOR THE SERVICE PURPOSE. MAKE SURE TO SLACK THE ELECTRICAL WIRE LITTLE BIT FOR CONTROL/POWER WIRES CONNECTION.
  - THE HEIGHT OF THE INDOOR UNIT IS ABLE TO BE ADJUSTED.
  - WHEN INSTALLING THE BRANCH DUCTS, BE SURE TO INSULATE ADEQUATELY. OTHERWISE CONDENSATION AND DRIPPING MAY OCCUR.
  - IF IT BECOMES THE CAUSE OF BEAN DROPS/WATER DENU.
  - AS FOR NECESSARY INSTALLATION/SERVICE SPACE, PLEASE REFER TO THE MULTI-FUNCTIONAL CASEMENT . REFER TO SPECIAL DRAWING.



| TRF/MEMOIAL    | PLFY-M/N/E/L   | A             | B             | C            | D            | E             | F              |
|----------------|----------------|---------------|---------------|--------------|--------------|---------------|----------------|
| 06/08/07/05/18 | 06/08/07/05/18 | 9-1/2 (24)    | 10-3/16 (258) | 7 (17.5)     | 3 (76.5)     | 10-7/16 (265) | 17-25/32 (450) |
| 24/30          | 24/30          | 11-1/16 (281) | 11-3/4 (298)  | 3-1/8 (79.5) | 3-1/8 (79.5) | 12 (305)      | 17-5/32 (450)  |
| 36/48          | 36/48          |               |               |              |              |               |                |



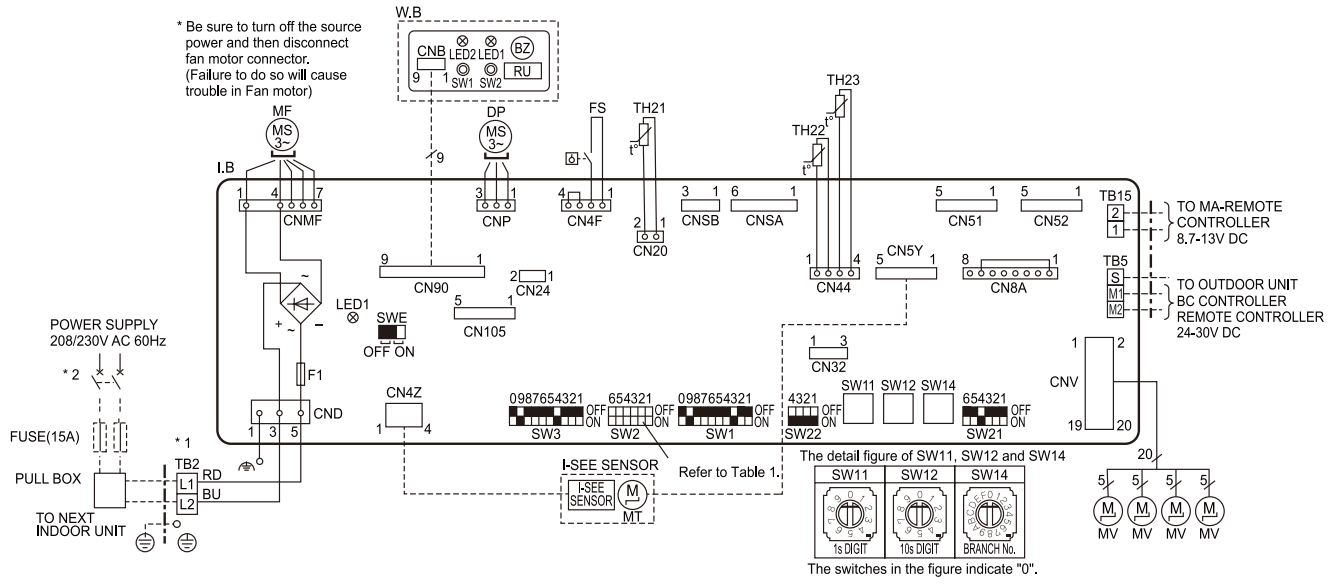
PLFY-WL06, 08, 12, 15, 18, 24, 30, 36, 48NEMU-E



(mm)[in]

| Model name      | X              | Y              | Z             |
|-----------------|----------------|----------------|---------------|
| PLFY-WL06NEMU-E | 325 [12-13/16] | 390 [15-3/8]   | 115 [4-17/32] |
| PLFY-WL08NEMU-E | 325 [12-13/16] | 390 [15-3/8]   | 115 [4-17/32] |
| PLFY-WL12NEMU-E | 325 [12-13/16] | 390 [15-3/8]   | 115 [4-17/32] |
| PLFY-WL15NEMU-E | 325 [12-13/16] | 390 [15-3/8]   | 115 [4-17/32] |
| PLFY-WL18NEMU-E | 325 [12-13/16] | 390 [15-3/8]   | 115 [4-17/32] |
| PLFY-WL24NEMU-E | 325 [12-13/16] | 390 [15-3/8]   | 115 [4-17/32] |
| PLFY-WL30NEMU-E | 325 [12-13/16] | 390 [15-3/8]   | 115 [4-17/32] |
| PLFY-WL36NEMU-E | 325 [12-13/16] | 380 [14-31/32] | 100 [3-15/16] |
| PLFY-WL48NEMU-E | 325 [12-13/16] | 380 [14-31/32] | 100 [3-15/16] |

PLFY-WL06, 08, 12, 15, 18, 24, 30, 36, 48NEMU-E



- NOTES:
1. At servicing for outdoor unit, always follow the wiring diagram of outdoor unit.
  2. In case of using MA-Remote controller, please connect to TB15. (Remote controller wire is non-polar.)
  3. In case of using M-NET-Remote controller, please connect to TB5. (Transmission line is non-polar.)
  4. Symbol [S] of TB5 is the shield wire connection.
  5. Symbols used in wiring diagram above are, [ ] : terminal block, [ ] : connector.
  6. The setting of SW2 differs in the capacity, for the detail, refer the table 1.
  7. Make sure to turn off the indoor and the outdoor units before replacing indoor controller board.
  8. ■ is the switch position.
  - \*1. Use copper supply wires.  
Utilisez des fils d'alimentation en cuivre.
  - \*2. A disconnect should be required by local code.  
Se procurer un sectionneur conforme aux réglementations Locales.

<Table 1> SW2 (CAPACITY CODE)

| MODELS | SW2    | MODELS | SW2    |
|--------|--------|--------|--------|
| 06     | ON OFF | 24     | ON OFF |
| 08     | ON OFF | 30     | ON OFF |
| 12     | ON OFF | 36     | ON OFF |
| 15     | ON OFF | 48     | ON OFF |
| 18     | ON OFF |        |        |

[LEGEND]

| SYMBOL | NAME   | SYMBOL | NAME  |
|--------|--|--------|---|
| I, B   | INDOOR CONTROLLER BOARD  | TH23   | THERMISTOR PIPE TEMP. DETECTION / GAS (32°F/15kΩ, 77°F/5.4kΩ) |
| F1     | FUSE (UL 6.3A 250V AC)   | MF     | FAN MOTOR   |
| CN24   | CONNECTOR EXTERNAL HEATER  | MV     | VANE MOTOR  |
| CN32   | CONNECTOR REMOTE SWITCH  | MT     | I-SEE SENSOR MOTOR  |
| CN51   | CONNECTOR CENTRALLY CONTROL                                      | DP     | DRAIN PUMP  |
| CN52   | CONNECTOR REMOTE INDICATION                                      | FS     | DRAIN FLOAT SWITCH  |
| CN105  | CONNECTOR IT TERMINAL  | W.B    | OPTION PART PCB FOR WIRELESS REMOTE CONTROLLER                |
| SW1    | SWITCH MODE SELECTION  | BZ     | BUZZER  |
| SW2    | SWITCH CAPACITY CODE   | LED1   | LED (OPERATION INDICATION : GREEN)                            |
| SW3    | SWITCH MODE SELECTION  | LED2   | LED (PREPARATION FOR HEATING : ORANGE)                        |
| SW11   | SWITCH ADDRESS SETTING 1s DIGIT                                  | RU     | RECEIVING UNIT  |
| SW12   | SWITCH ADDRESS SETTING 10s DIGIT                                 | SW1    | EMERGENCY OPERATION (HEAT / DOWN)                             |
| SW14   | SWITCH BRANCH NO.  | SW2    | EMERGENCY OPERATION (COOL / UP)                               |
| SW21   | SWITCH CEILING HEIGHT/DISCHARGE OUTLET NUMBER/OPTION SELECTOR    |        |   |
| SW22   | SWITCH PAIR NO. SETTING  |        |   |
| SWE    | SWITCH DRAIN PUMP (TEST MODE)                                    |        |   |
| TH21   | THERMISTOR ROOM TEMP. DETECTION (32°F/15kΩ, 77°F/5.4kΩ)          |        |   |
| TH22   | THERMISTOR PIPE TEMP. DETECTION / LIQUID (32°F/15kΩ, 77°F/5.4kΩ) |        |   |

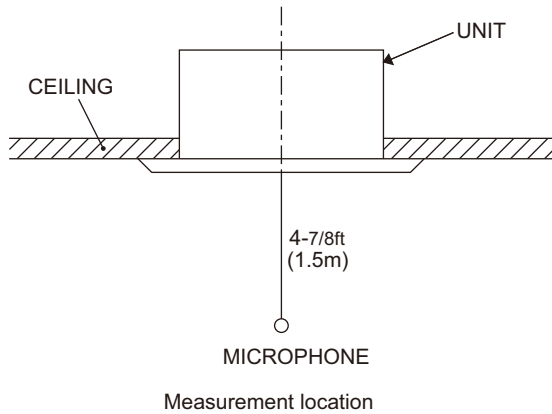
LED on indoor board for service

| Mark | Meaning                               | Function   |
|------|---------------------------------------|--|
| LED1 | Main power supply                     | Main Power supply (Indoor unit:208/230V AC) power on → lamp is lit |
| LED2 | Power supply for MA-Remote controller | Power supply for MA-Remote controller on → lamp is lit             |



5-1. Sound levels

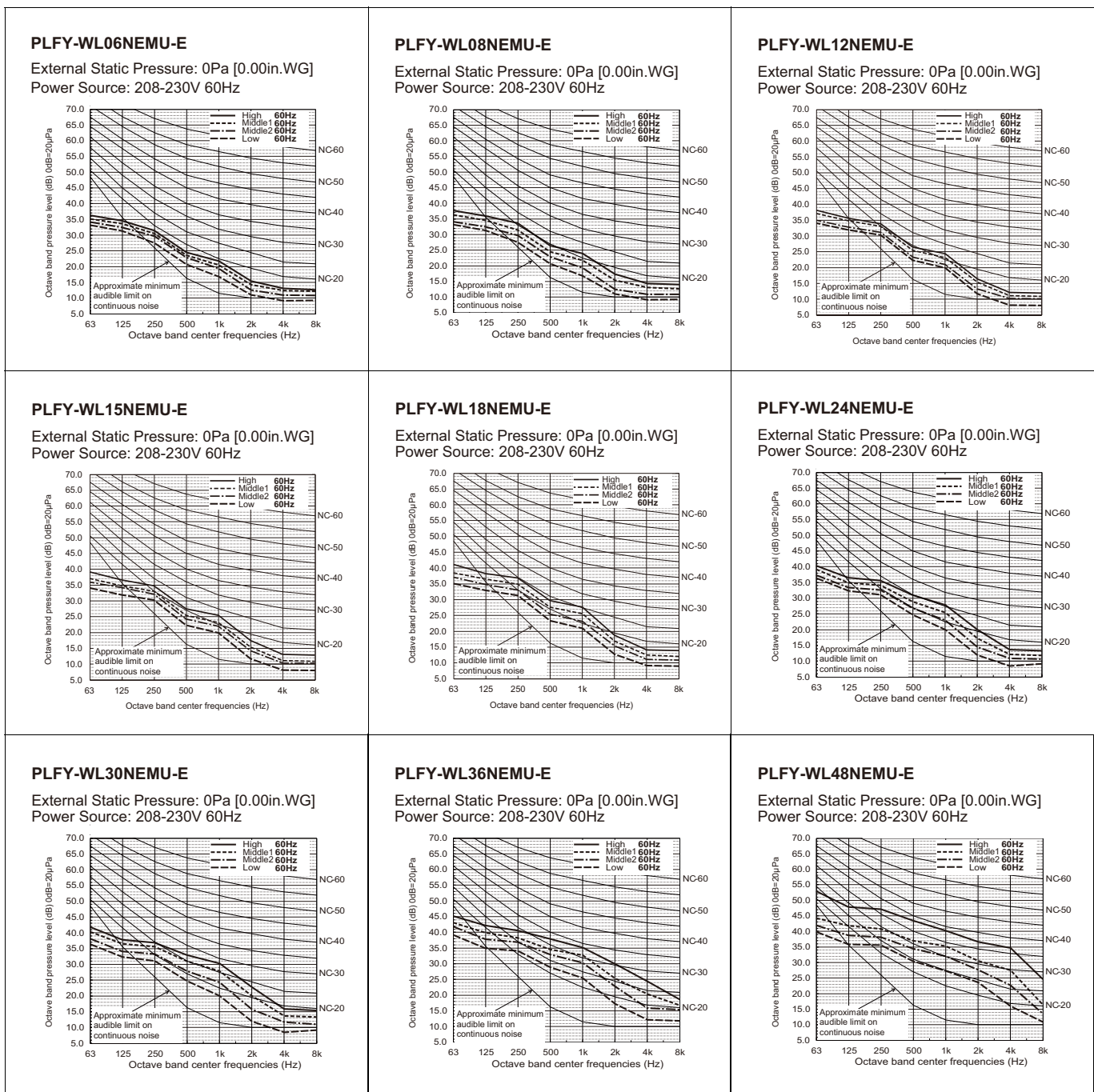
Ceiling cassette series



Operating sound levels  
(Low-Mid2-Mid1-High)

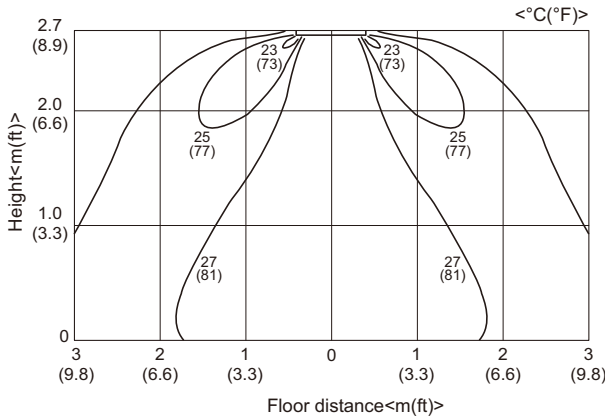
| Model           | Sound level (A weighted)<br>Unit: dB(A) |
|-----------------|---|
| PLFY-WL06NEMU-E | 24-26-27-28                             |
| PLFY-WL08NEMU-E | 24-26-28-30                             |
| PLFY-WL12NEMU-E | 26-27-29-30                             |
| PLFY-WL15NEMU-E | 26-28-29-31                             |
| PLFY-WL18NEMU-E | 27-29-31-33                             |
| PLFY-WL24NEMU-E | 27-29-31-33                             |
| PLFY-WL30NEMU-E | 27-30-33-35                             |
| PLFY-WL36NEMU-E | 31-35-37-40                             |
| PLFY-WL48NEMU-E | 33-37-40-46                             |

5-2. NC curves

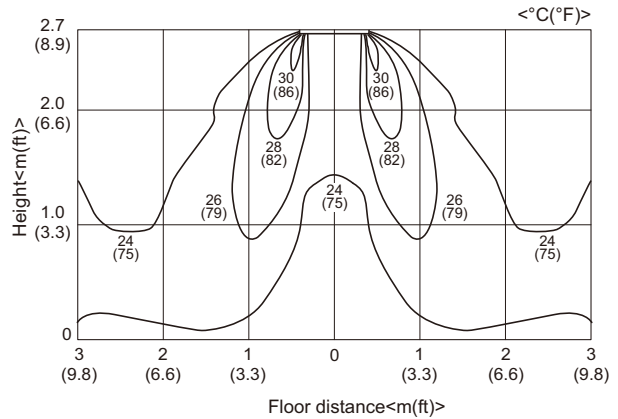


6-1. Temperature distributions

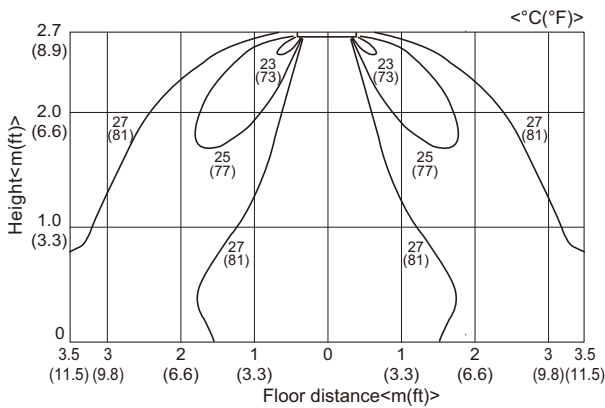
**PLFY-WL12, 15NEMU-E**  
 <Cooling mode>Standard  
 Flow angle: 30° 4-way flow  
 ceiling height: 2.7m(8.9ft)



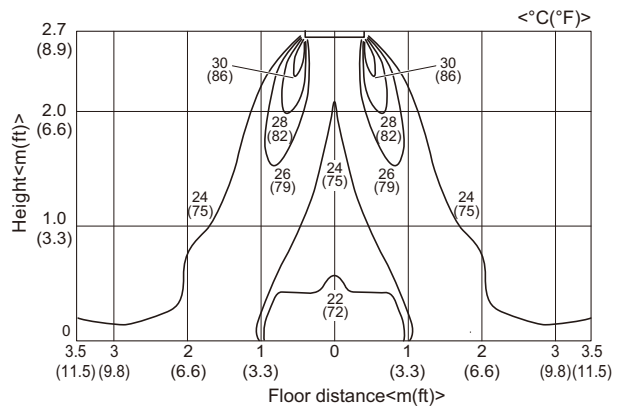
**<Heating mode> Standard**  
 Flow angle: 60° 4-way flow  
 ceiling height: 2.7m(8.9ft)



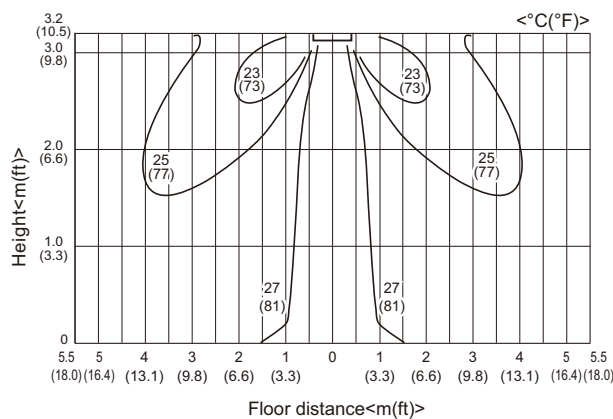
**PLFY-WL18NEMU-E**  
 <Cooling mode>Standard  
 Flow angle: 30° 4-way flow  
 ceiling height: 2.7m(8.9ft)



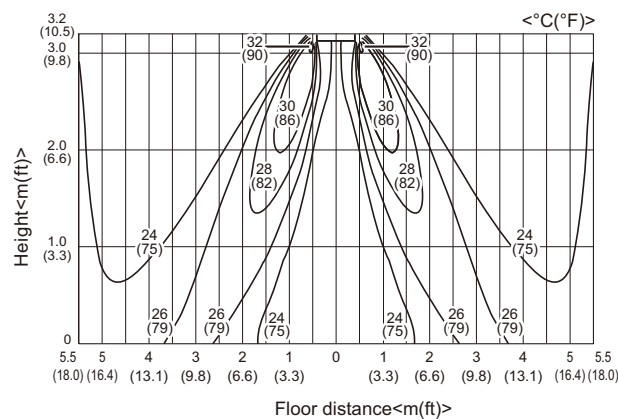
**<Heating mode> Standard**  
 Flow angle: 60° 4-way flow  
 ceiling height: 2.7m(8.9ft)



**PLFY-WL48NEMU-E**  
 <Cooling mode>Standard  
 Flow angle: 30° 4-way flow  
 ceiling height: 2.7m(8.9ft)



**<Heating mode>Standard**  
 Flow angle: 60° 4-way flow  
 ceiling height: 2.7m(8.9ft)



Note : These figures show typical temperature distributions in the conditions above. In the actual installation, they may differ from these figures under the influence of air temperature conditions, ceiling height, cooling/heating load, obstacles, etc.

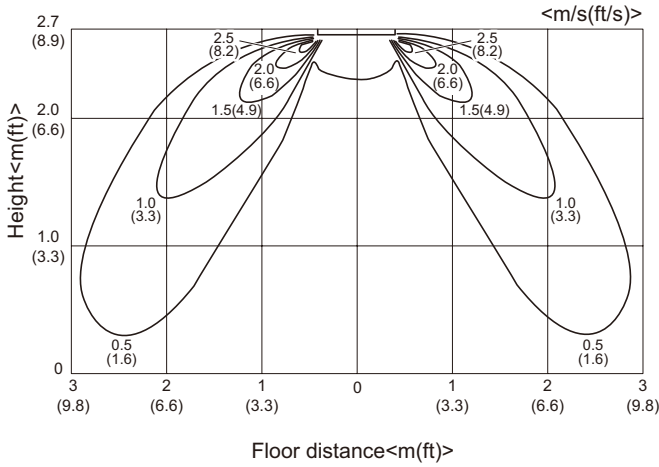
PLFY-WL-NEMU-E

6-2. Airflow distributions

PLFY-WL12, 15NEMU-E

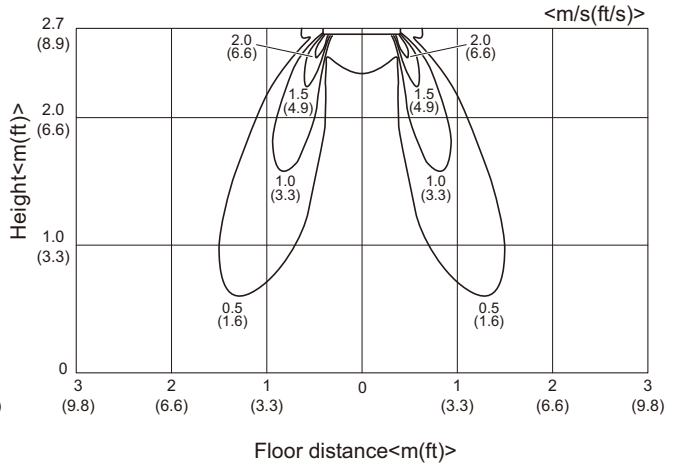
<Cooling mode>

Flow angle: 30°



<Heating mode>

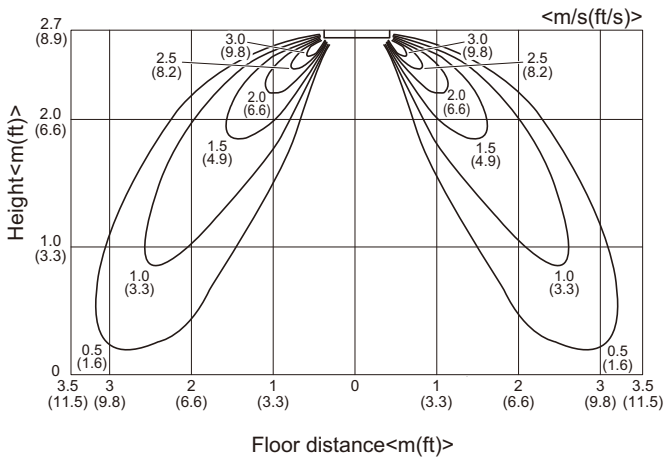
Flow angle: 60°



PLFY-WL18NEMU-E

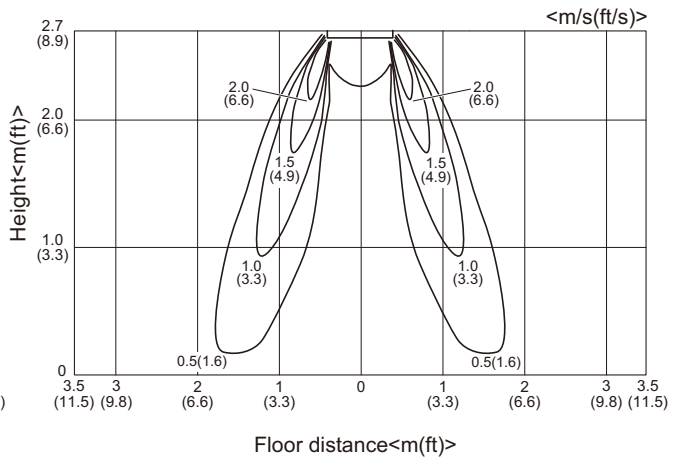
<Cooling mode>

Flow angle: 30°



<Heating mode>

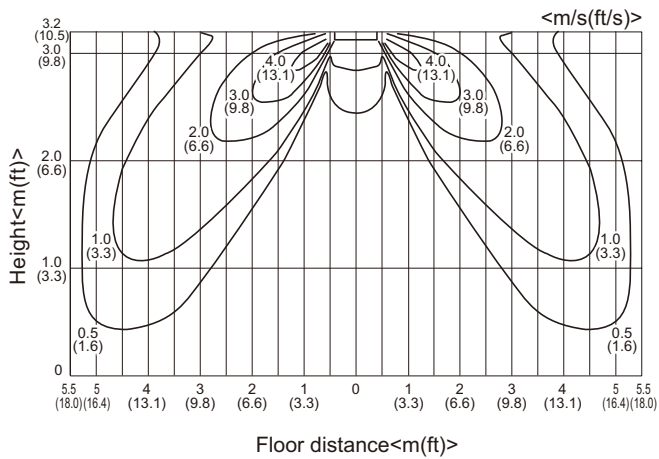
Flow angle: 60°



PLFY-WL48NEMU-E

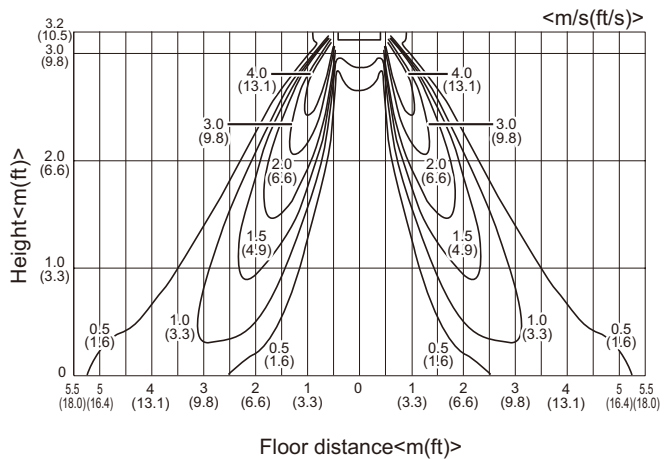
<Cooling mode>

Flow angle: 30°



<Heating mode>

Flow angle: 60°



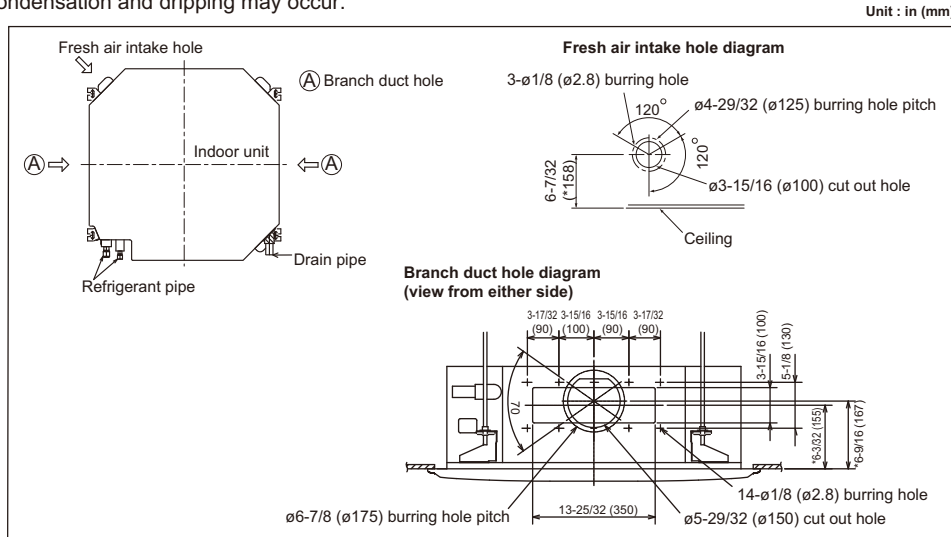
Note : These figures show typical airflow distributions in the conditions above. In the actual installation, they may differ from these figures under the influence of air temperature conditions, ceiling height, cooling/heating load, obstacles, etc.

● PLFY-WL06, 08, 12, 15, 18, 24, 30, 36, 48NEMU-E

At the time of installation, use the duct holes (cut out) located at the positions shown in following diagram, as and when required.  
 • A fresh air intake hole for the optional multi function casement can also be made.

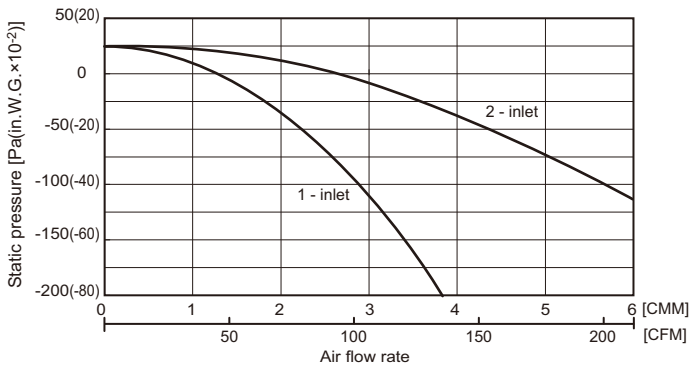
Note:

The figures marked with \* in the drawing below represent the dimensions of the main unit excluding those of the optional multi function casement.  
 When installing the optional multi function casement, add 5-5/16" (135 mm) to the dimensions marked on the figure.  
 When installing the branch ducts, be sure to insulate adequately.  
 Otherwise, condensation and dripping may occur.

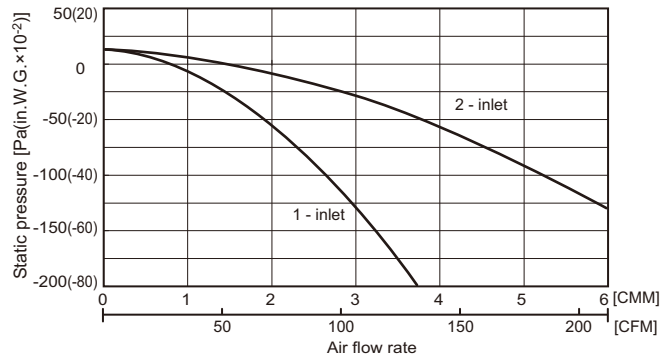


PLFY-WL-NEMU-E

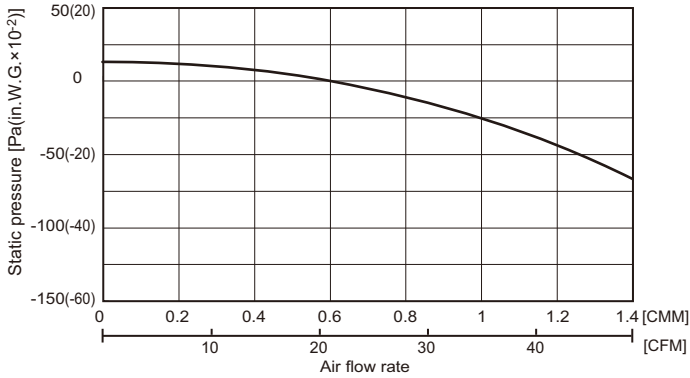
● PLYF-WL06, 08, 12, 15, 18NEMU-E  
Multifunction casement + High efficiency filter



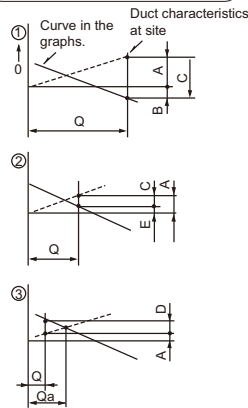
Multifunction casement + Standard filter



Taking air into the unit

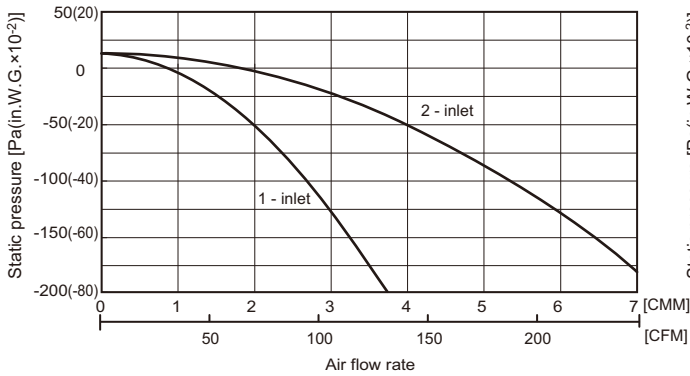


How to read curves

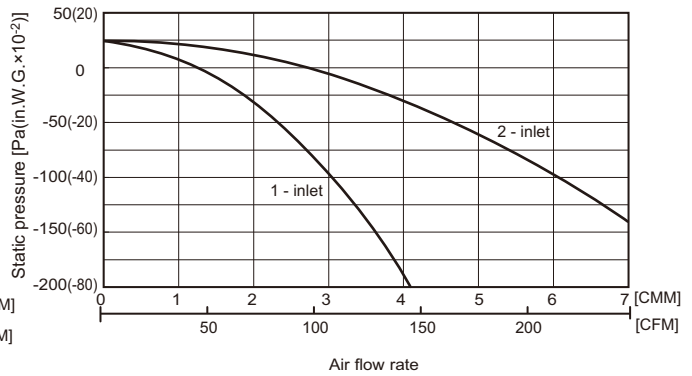


- Q...Designed amount of fresh air intake <CMM (CFM)>
- A...Static pressure loss of fresh air intake duct system with air flow amount Q <Pa (in.W.G. x 10<sup>-2</sup>)>
- B...Forced static pressure at air conditioner inlet with air flow amount Q <Pa (in.W.G. x 10<sup>-2</sup>)>
- C...Static pressure of booster fan with air flow amount Q <Pa (in.W.G. x 10<sup>-2</sup>)>
- D...Static pressure loss increase amount of fresh air intake duct system for air flow amount Q <Pa (in.W.G. x 10<sup>-2</sup>)>
- E...Static pressure of indoor unit with air flow amount Q <Pa (in.W.G. x 10<sup>-2</sup>)>
- Qa...Estimated amount of fresh air intake without D <CMM (CFM)>

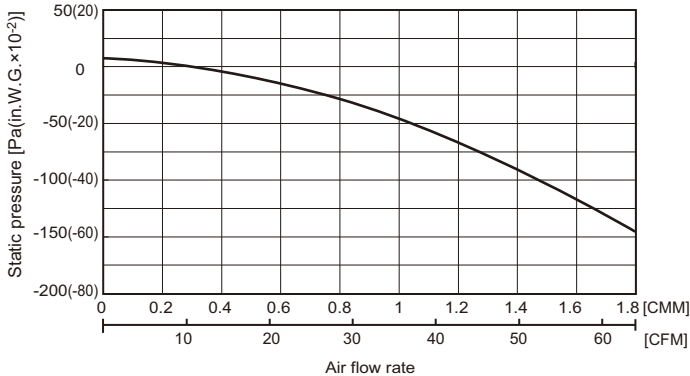
● PLYF-WL24, 30, 36, 48NEMU-E  
Multifunction casement + Standard filter



Multifunction casement + High efficiency filter



Taking air into the unit



## 8. ELECTRICAL CHARACTERISTICS

Ceiling cassette (4-way flow type)

Symbols: MCA: Minimum Circuit Ampacity (=1.25xFLA) FLA: Full Load Amps

IFM: Indoor Fan Motor Output: Fan motor rated output

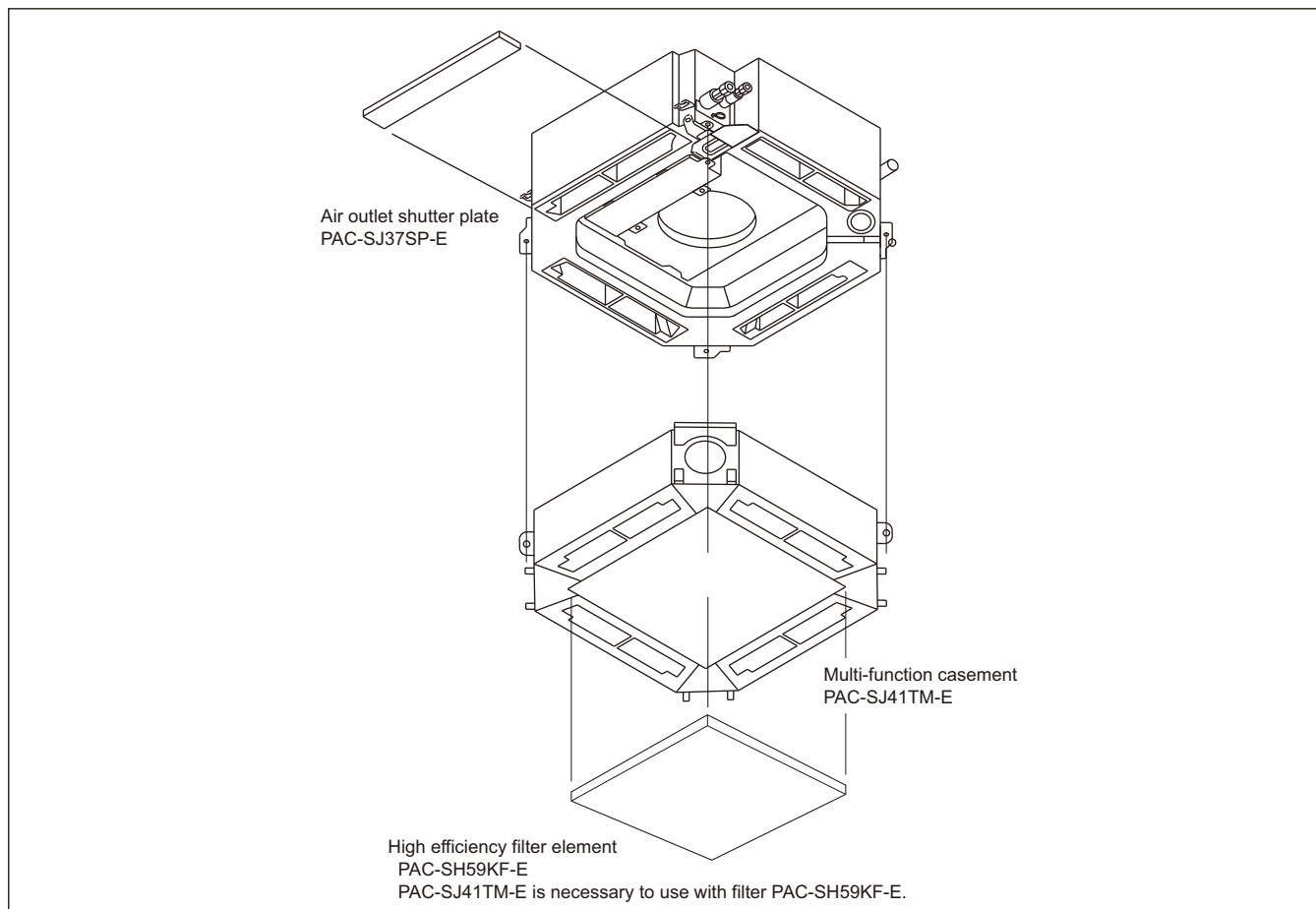
| Model           | Indoor Unit |          |               | IFM    |             |        |
|-----------------|-------------|----------|---------------|--------|-------------|--------|
|                 | Hz          | Volts    | Voltage range | MCA(A) | Output (kW) | FLA(A) |
| PLFY-WL06NEMU-E | 60Hz        | 208/230V | 187 to 253V   | 0.35   | 0.05        | 0.28   |
| PLFY-WL08NEMU-E |             |          |               | 0.35   | 0.05        | 0.28   |
| PLFY-WL12NEMU-E |             |          |               | 0.35   | 0.05        | 0.28   |
| PLFY-WL15NEMU-E |             |          |               | 0.35   | 0.05        | 0.28   |
| PLFY-WL18NEMU-E |             |          |               | 0.35   | 0.05        | 0.28   |
| PLFY-WL24NEMU-E |             |          |               | 0.70   | 0.12        | 0.56   |
| PLFY-WL30NEMU-E |             |          |               | 0.70   | 0.12        | 0.56   |
| PLFY-WL36NEMU-E |             |          |               | 0.70   | 0.12        | 0.56   |
| PLFY-WL48NEMU-E |             |          |               | 0.70   | 0.12        | 0.56   |

PLFY-WL-NEMU-E

9-1. Optional parts line up for the Indoor unit

PLFY-WL-NEMU-E

|                | Description                      | Model        |
|----------------|----------------------------------|--------------|
| PLFY-WL-NEMU-E | Air outlet shutter plate         | PAC-SJ37SP-E |
|                | Multi-function casement          | PAC-SJ41TM-E |
|                | High efficiency filter element   | PAC-SH59KF-E |
|                | 3D i-see Sensor corner panel     | PLP-41EAEU   |
|                | Wireless signal receiver         | PAR-SR4LU-E  |
|                | External heater adapter          | PAC-YU25HT   |
|                | Duct flange for fresh air intake | PAC-SH65OF-E |



9-2. Air outlet shutter plate

Using the air outlet shutter plate to block the air outlet to modify the air-way from 4 to 3 or 2.

With one shutter plate, 4 air-ways can be changed to 3;

With two shutter plates, 4 air-ways can be changed to 2;

Changing to 1 way is not allowed.

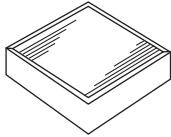
Material: Foamed polyethylene + foamed urethane, color: Black

| Item     | Shutter plate | Shutter plate |  |
|----------|---------------|---------------|--|
| Quantity | 2             | 1             |  |
| Shape    |               |               |  |

Detailed installation information should be referred to its Installation Manual.

### 9-3. High efficiency filter element

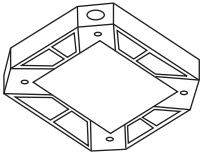


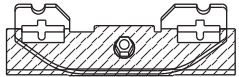
Life span: 2,500 hr (Dust concentration 0.15mg/m<sup>3</sup>); Colorimetric method 65% (JIS 11 class); No re-production.  
 \* The actual dust situation affects the filter life span, which should be considered at the applying site.  
 Material: Electrostatic polyolefin fiber  
 High efficiency filter element PAC-SH59KF-E should be used together with the Multi-function casement PAC-SJ41TM-E. When using PAC-SH59KF-E, switching on SW21-5 of the Indoor unit address board is needed. Details should be referred to its Installation Manual.

|          |   |  |
|----------|---|--|
| Quantity | 1   |  |
| Shape    |  |  |

Detailed installation information is referred in its Installation Manual.

### 9-4. Multi-function casement



Multi-function casement is used for High efficiency filter element and/or fresh air intake from outdoor.  
 It should be used with High efficiency filter element PAC-SH59KF-E (Colorimetric method 65%).  
 Fresh air intake on the Multi-function casement is possible from any 2 or less corners among the 4 ones.  
 But duct and flange on the casement should be prepare locally.

| Item     | Multi-functional casement  | Screw with washer (black)   | Screw  | Grille securing bracket   |
|----------|--|---|--|---|
| Quantity | 1  | 4   | 8  | 4   |
| Shape    |  | M5 × 0.8 × 25<br> | M5 × 0.8 × 12<br> | With insulator<br> |

Detailed installation information should be referred to its Installation Manual.

### 9-5. 3D i-see Sensor corner panel

3D i-see Sensor provides comfortable space as it detects the floor temperature to prevent spotty temperature.  
 And that enables the unit to save energy.  
 Attention  
 Make sure that there are no gaps between the unit and the grille, and the grille and ceiling.  
 \* It may cause dew dripping.

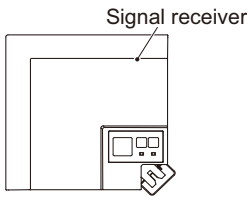
| Item     | 3D i-see Sensor corner panel  | Plastic fastener  |
|----------|---|---|
| Quantity | 1   | 2   |
| Shape    |  |  |

Detailed installation information should be referred to its Installation Manual.



### 9-6. Wireless signal receiver

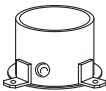

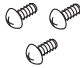
Wireless signal receiver PAR-SR4LU-E is necessary for using wireless remote controller  
 PAR-SR4LU-E is a corner panel with the signal receiver for wireless remote controller.

|          |   |  |  |
|----------|---|--|--|
| Item     | Wireless signal receiver  |  |  |
| Quantity | 1   |  |  |
| Shape    |  |  |  |

Detailed installation information should be referred to its Installation Manual.

### 9-7. Flange for fresh air intake

Using the flange for fresh air intake to connect to  $\phi 100$  ( $\phi 3-15/16$  inch) duct.  
 The flange for fresh air intake is installed in the Multi-function casement(PAC-SJ41TM-E) or indoor unit.

|          |  |   |  |  |
|----------|--|---|--|--|
| Item     | ① Duct flange  | ② Insulator   | ③ Screw  |  |
| Quantity | 1  | 1   | 3  |  |
| Shape    |  |  | <br>M4x10 |  |

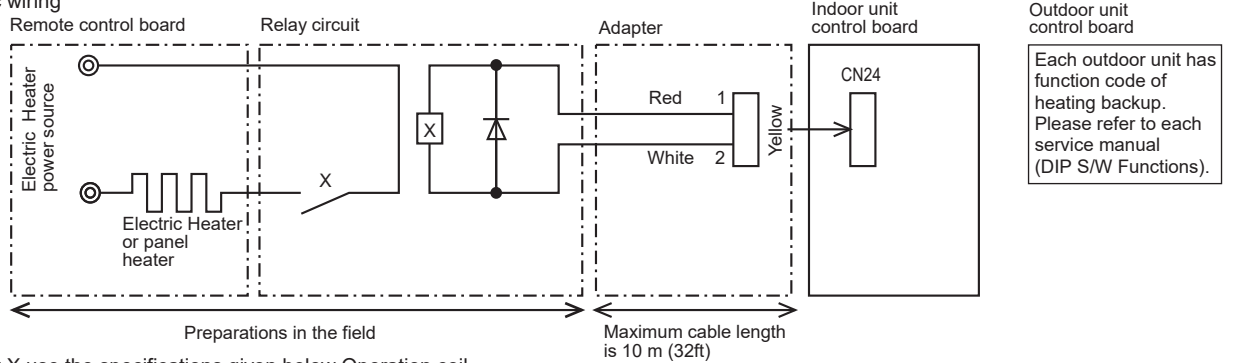
Detailed installation information should be referred to its Installation Manual.

9-8. External heater adapter

External heater adapter PAC-YU25HT is a set of special wiring parts for controlling the electric heater\* with the air conditioner system.  
 \*The electric heater should be designed and prepared at the site.

A basic connection method is shown as follows:(For details, refer to its Installation Manual.)

(1) Basic wiring



For relay X use the specifications given below  
 Operation coil  
 Rated voltage : 12VDC  
 Power consumption : 1W or less

\* Use the diode that is recommended by the relay manufacturer at both ends of the relay coil.

The length of the electrical wiring for the PAC-YU25HT is 2 meters (6-1/2 ft).

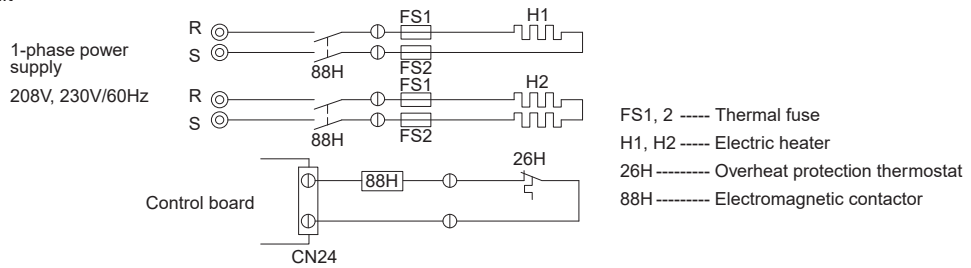
To extend this length, use sheathed 2-core cable.

Control cable type : CVV, CVS, CPEV or equivalent.

Cable size : 0.5 mm<sup>2</sup> ~ 1.25 mm<sup>2</sup> (16 to 22 AWG)

Don't extend the cable more than 10 meters (32ft).

(2) Recommended circuit



FS1, 2 ----- Thermal fuse  
 H1, H2 ----- Electric heater  
 26H ----- Overheat protection thermostat  
 88H ----- Electromagnetic contactor

|          |                         |   |  |
|----------|-------------------------|---|--|
| Item     | ① External output cable | ② Connector (for use with the panel heater) |  |
| Quantity | 2                       | 3   |  |
| Shape    |                         |   |  |

Wiring details and Installation details should be referred to its Installation Manual.

PLFY-WL-NEMU-E

**⚠ Warning**

Do not use refrigerant other than the type indicated in the manuals provided with the unit and on the nameplate.

- Doing so may cause the unit or pipes to burst, or result in explosion or fire during use, repair, or at the time of disposal of the unit.

- It may also be in violation of applicable laws.

- MITSUBISHI ELECTRIC CORPORATION cannot be held responsible for malfunctions or accidents resulting from the use of the wrong type of refrigerant.

Our air conditioning equipment and heat pumps contain a fluorinated greenhouse gas, R410A.

**mitsubishi** **ELECTRIC CORPORATION**

[www.MitsubishiElectric.com](http://www.MitsubishiElectric.com)