



Air Conditioning Control System
Centralized Controller
EB-50GU-A/EB-50GU-J



Java™
POWERED

Instruction Book
—Web Browser for User—

Contents

1. Introduction.....	2
1-1. Terms Used in This Manual	2
1-2. PC Requirements.....	2
2. Setting the Operating Environment	3
2-1. Setting the IP Address of the PC	3
2-2. Setting the Web Browser	5
3. Logging in to the Web Browser for User.....	8
4. Monitor/Operation.....	10
4-1. Condition List	10

Before using the controller, please read this Instruction Book carefully to ensure proper operation.
Retain this manual for future reference.

1. Introduction

Mitsubishi Electric Corporation's Centralized Controller EB-50GU-A/EB-50GU-J features functions to allow users to monitor and operate the air conditioning units from a PC over the LAN.

This Instruction Book explains how to monitor and operate the units connected to the EB-50GU-A/EB-50GU-J using a Web browser.

1-1. Terms Used in This Manual

- "Centralized Controller EB-50GU-A/EB-50GU-J" is referred to as "EB-50."
- "Booster unit" and "Water HEX unit" are referred to as "Air To Water (PWFY) unit."
- Screen images used in this manual are from Windows 7® and Internet Explorer 9.0.

Note: Windows is a registered trademark or trademark of Microsoft Corporation in the United States and other countries.

1-2. PC Requirements

Table1-1 PC Requirements

Item		Requirement
CPU		1 GHz or faster
Memory		512 MB or more
Screen resolution		1024 x 768 or higher recommended
Browser	Windows	Microsoft® Internet Explorer 8.0 Microsoft® Internet Explorer 9.0 * Java execution environment is required. (Oracle® Java Plug-in Ver. 1.7.0_11) * Install Oracle® Java Plug-in that is appropriate for your operating system. When using a 64-bit Internet Explorer, install a 64-bit Java Plug-in. * The version of the Oracle® Java Plug-in can be verified by clicking [Java] in the Control Panel.
	Macintosh	Safari 6 * Java execution environment is required. (Oracle® Java Plug-in Ver. 1.7.0_11) * The version of the Oracle® Java Plug-in can be verified by clicking [Help]-[Installed Plug-ins] on the Safari browser.
On-board LAN port or LAN card		100 BASE-TX
Pointing device		e.g., mouse

Note: Microsoft is a registered trademark or trademark of Microsoft Corporation in the United States and/or other countries.

Oracle and Java are trademarks or registered trademarks of Oracle Inc. in the United States and/or other countries.

2. Setting the Operating Environment

This chapter explains how to make PC settings and Web browser settings to monitor and operate the air conditioning units.

2-1. Setting the IP Address of the PC

Follow the instructions below to set the PC's IP address for the Web browser to recognize the EB-50 unit.

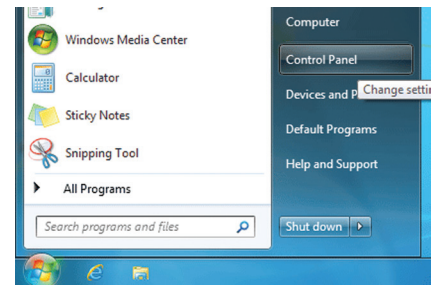
The PC's IP address must have the same network address as the EB-50's IP address.

(i.e., EB-50's IP address: [192.168.1.1], PC's IP address: [192.168.1.101])

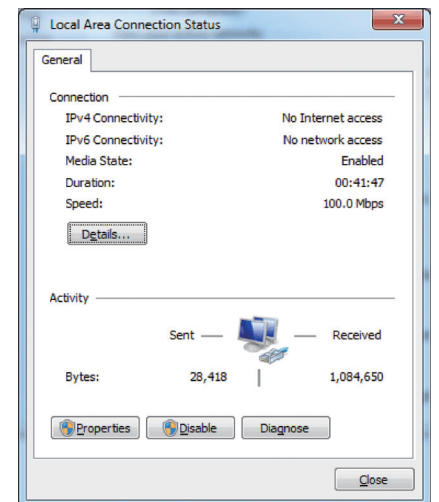
When connecting an EB-50 to an existing LAN, consult the system administrator to decide the IP address of the PC.

Note: When using an EB-50-dedicated LAN, it is recommended that the main EB-50 unit be assigned an IP address between the range [192.168.1.1] and [192.168.1.40] and that the PC connected to the EB-50 be assigned an IP address between the range [192.168.1.101] and [192.168.1.150].

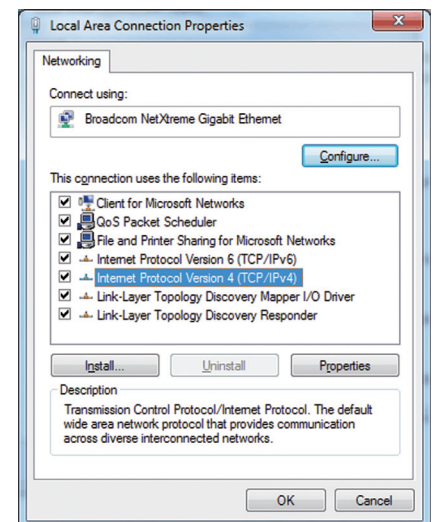
(1) Click [Control Panel] in the Start menu.



(2) Click [Network and Sharing Center]>[Local Area Setting].
In the [Local Area Connection Status] window, click [Properties].



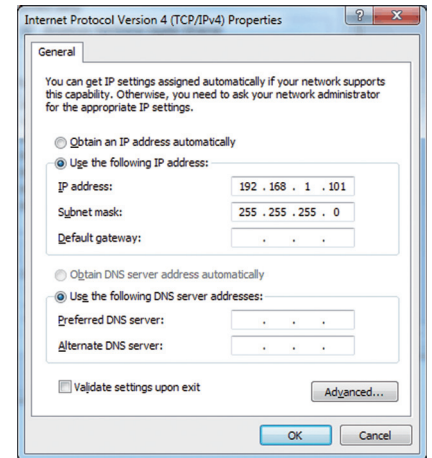
(3) Click [Internet Protocol Version 4 (TCP/IPv4)] to select it, and click [Properties].



- (4) In the [Internet Protocol Version 4 (TCP/IPv4) Properties] window, check the radio button next to [Use the following IP address]. Enter the PC's IP address (e.g., [192.168.1.101]) in the [IP address] field, and enter the subnet mask [255.255.255.0] (unless otherwise specified) in the [Subnet mask] field. In the [Default gateway] field, enter the gateway address as necessary.

Note: Consult the system administrator to decide the IP, subnet mask, and gateway addresses.

- (5) Keep clicking [OK] or [Close] to close all windows.



2-2. Setting the Web Browser

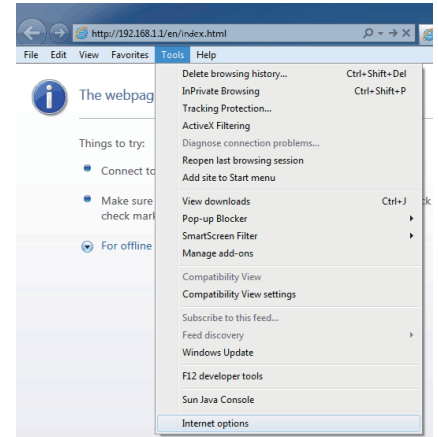
Web browser setting varies with the Internet connection type. See the sections below for how to make Web browser settings for different types of Internet connection.

To prevent unauthorized access, always use a security device such as a VPN router when connecting the EB-50 to the Internet.

2-2-1. No Internet connection

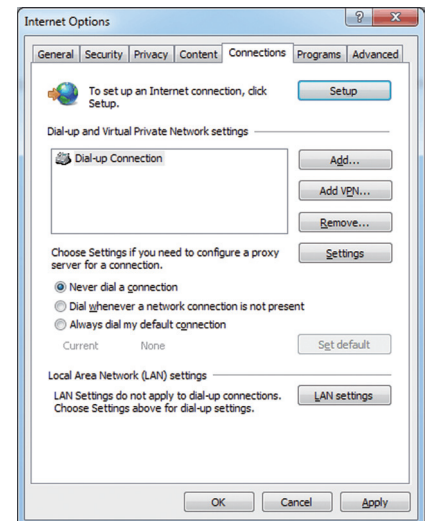
To monitor and operate the air conditioning units from a PC with no Internet connection, follow the instructions below to set the environment for the Web browser.

(1) Click [Tools] in the menu bar, then click [Internet options].



(2) In the [Internet Options] window, click the [Connections] tab.

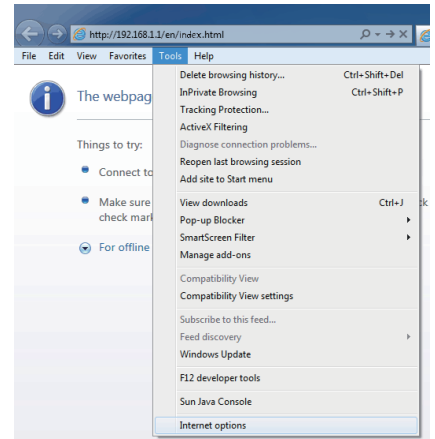
(3) Check the radio button next to [Never dial a connection] in the middle of the window, and click [OK] to close the window.



2-2-2. Dial-up Internet connection

To monitor and operate the air conditioning units from a PC that connects to the Internet through a dial-up connection, follow the instructions below to set the environment for the Web browser.

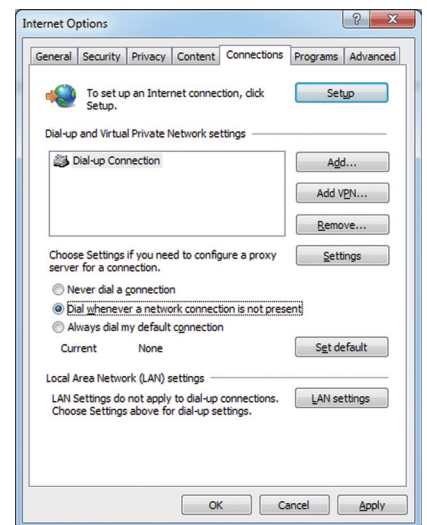
- (1) Click [Tools] in the menu bar, then click [Internet options].



- (2) In the [Internet Options] window, click the [Connections] tab.

- (3) Check the radio button next to [Dial whenever a network connection is not present] in the middle of the window, and click [OK] to close the window.

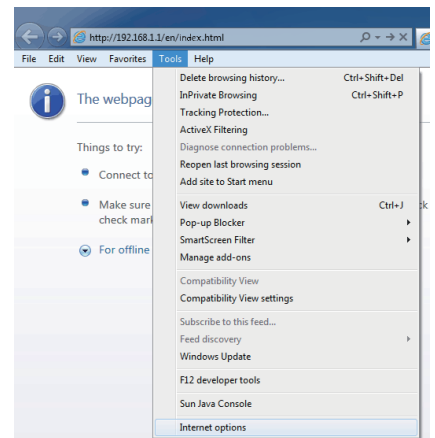
By making these settings, a message will appear asking whether or not to use a dial-up connection when an Internet connection is necessary. Follow the message to connect to the Internet.



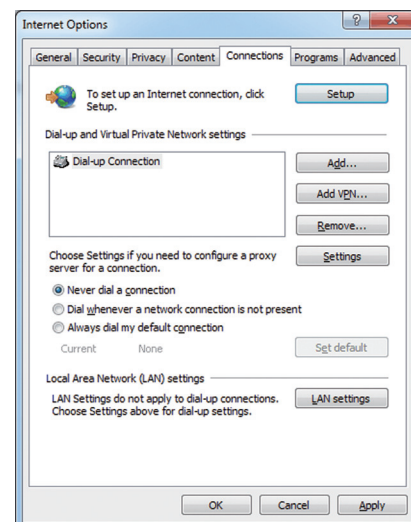
2-2-3. Connecting to the Internet via proxy server using an existing LAN

To monitor and operate the air conditioning units from a PC that connects to the Internet through a proxy server by connecting to an existing LAN, such as a LAN within your company, follow the instructions below to set the environment for the Web browser.

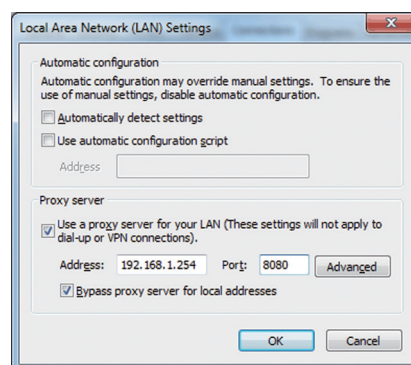
- (1) Click [Tools] in the menu bar, then click [Internet options].



- (2) In the [Internet Options] window, click the [Connections] tab.
- (3) Check the radio button next to [Never dial a connection] in the middle of the window.
- (4) Click [LAN settings] under [Local Area Network (LAN) settings].

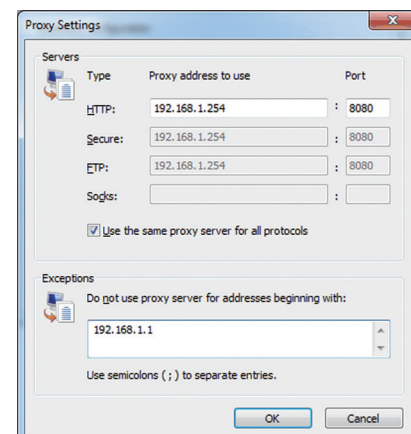


- (5) In the [Local Area Network (LAN) Settings] window, check [Bypass proxy server for local addresses], and click [Advanced].



- (6) In the [Proxy Settings] window, enter the EB-50's IP address (e.g., 192.168.1.1) in the [Exceptions] field. Then, keep clicking [OK] or [Close] to close all windows.

If connecting multiple EB-50 units, enter the addresses of all EB-50 units (e.g., [192.168.1.1; 192.168.1.2]). It is also possible to use an asterisk as a wildcard (e.g., [192.168.1.*]).



3. Logging in to the Web Browser for User

- (1) Enter the web page address in the address field of the Web browser as follows:

http://[IP address of the EB-50]/index.html

Press the [Enter] key. A login screen will appear.

Note: If the IP address of the EB-50 is [192.168.1.1], the web page address is [http://192.168.1.1/index.html].

Note: Default IP address of EB-50 is [192.168.1.1].

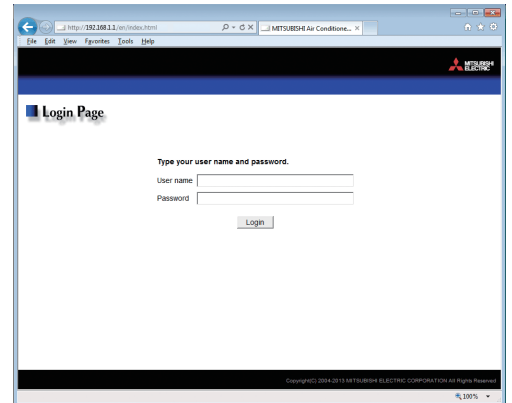
Note: If the login screen does not appear then take the steps below to delete the temporary files.

<Internet Explorer>

1. Click [Tools] in the menu bar, then click [Internet options].
2. On the [General] tab, click [Delete] in the middle of the window.
3. In the [Delete Browsing History] window, click [Delete].

<Java>

1. Click [Control Panel] from the Start menu.
2. Click the [Java] icon to launch the Java Control Panel.
3. On the [General] tab, click [Settings] in the [Temporary Internet Files] section.
4. Click [Delete Files].
5. In the [Delete Files and Applications] window, click [OK].



Note: The web page will be displayed in the same language as the operating system on the PC.

The web page can be displayed in other languages by entering the web page address as follows:

Chinese	http://[IP address of the EB-50]/zh/index.html
English	http://[IP address of the EB-50]/en/index.html
French	http://[IP address of the EB-50]/fr/index.html
German	http://[IP address of the EB-50]/de/index.html
Italian	http://[IP address of the EB-50]/it/index.html
Japanese	http://[IP address of the EB-50]/ja/index.html
Portuguese	http://[IP address of the EB-50]/pt/index.html
Russian	http://[IP address of the EB-50]/ru/index.html
Spanish	http://[IP address of the EB-50]/es/index.html

Note: You can add the web page address to your Favorites for easy access in the future.

- (2) Enter the user name and the password in the login screen, and click [Login]. A Condition List screen will appear, which shows the operation conditions of all groups.

Note: Consult the building manager for your user name and password.

Encrypting the communication data and logging in to the Web browser (HTTPS connection)

EB-50 can encrypt communication data using HTTPS (SSL).

When connecting the EB-50 to the LAN that is accessible to the general public, it is recommended that the following settings be made so that the units are monitored and controlled on the encrypted web page.

Note: Depending on the operating system or the Java version, HTTPS encrypted communication may not be enabled properly. If this happens, use an HTTP connection as explained in the previous page.

- (1) Prefix the web address with [https], enter the rest of the address, and press the [Enter] key.

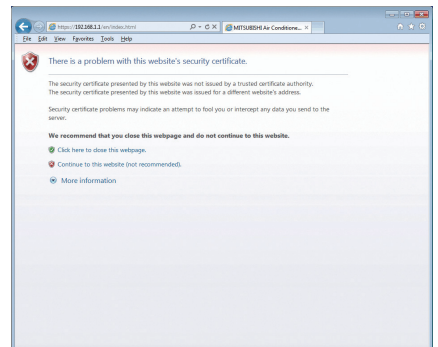
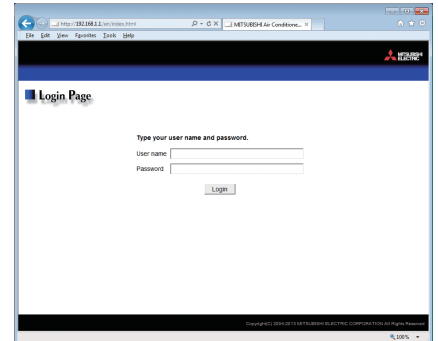
https://[IP Address of the EB-50]/index.html

Note: If the IP address of the EB-50 is [192.168.1.1], the web page address is [https://192.168.1.1/index.html].

The encrypted data communication will begin, and the Login screen will appear.

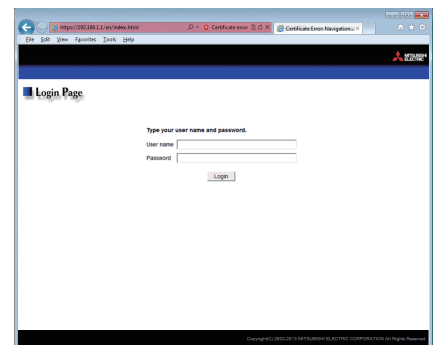
If a security certificate error page appears instead of the Login screen, go to step (2) below.

- (2) If the security certificate is invalid, a security certificate error page (as shown at right) will appear.
Click [Continue to this website (not recommended)].



- (3) If the connection is successfully made, the Login screen will appear.

Note: Although the address bar will turn red and a message "Certificate error" will appear, you can still access the Web browser.



4. Monitor/Operation

This chapter explains how to monitor the operation conditions of all groups collectively and how to operate each group or all groups collectively.

4-1. Condition List

This section explains how to monitor the operation conditions of all groups collectively (see section 4-1-1) and also explains how to operate each group (see section 4-1-2), or all groups collectively (see section 4-1-3). After login, a Condition List screen will appear, which shows the operation conditions of all air conditioning unit groups, LOSSNAY unit (ventilator) groups, general equipment groups, and Air To Water (PWFY) unit groups.

4-1-1. Checking the operation conditions of all groups

On the Condition List screen, the operation conditions of all groups can be monitored. The operator can also check the unit malfunctions on this screen and prevent the units from being left on unintentionally.

Update
Click to show the most recent operation conditions.

Batch Operations
Click to operate the units in all groups at once.

Weekly schedule number
Indicates the weekly schedule that is currently effective.

Group name
The name of the group will appear.

Group icons
The icons indicate the operation conditions of groups. Click the icon to switch to the operation screen.

Operation mode
The operation mode of the group will appear.


































Set temperature
The set temperature of the group will appear.
Note: For Air To Water (PWFY) unit groups, the set water temperature will appear.
Note: The temperature unit (°C or °F) can be set on the Basic System settings screen, accessible via the Web Browser for Initial Settings.

Room humidity
The reading of the indoor unit return air humidity or the humidity sensor on the ME remote controller (Smart ME controller) will appear.
Note: The value will not appear if the indoor unit does not have a humidity measurement function.
Note: If a ME remote controller (Smart ME controller) is connected to the group and the built-in humidity sensor is enabled, the reading of the sensor will appear.
Note: The indoor unit return air humidity has priority to be displayed over the reading of the humidity sensor on the ME remote controller (Smart ME controller).

Room temperature
Indoor unit return air temperature will appear.
Note: The temperature shown may be different from the actual room temperature.
Note: For Air To Water (PWFY) unit groups, the current water temperature will appear.
Note: The temperature unit (°C or °F) can be selected on the Basic System settings screen, accessible via the Web Browser for Initial Settings.

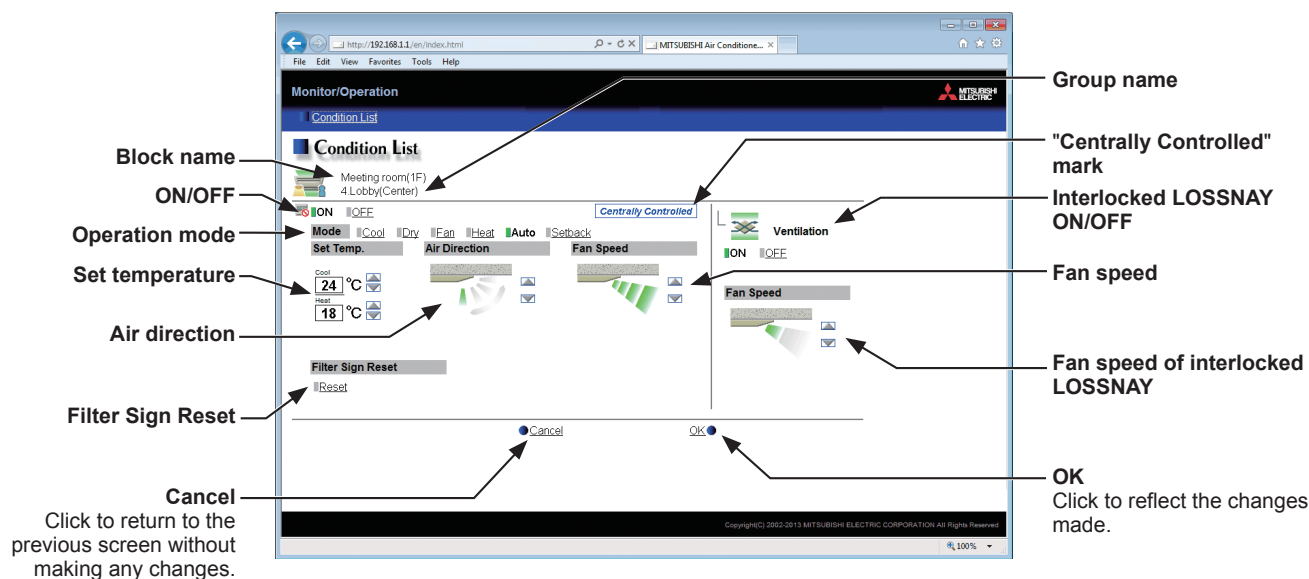
Item	Description
Update	Click to show the most recent operation conditions.
Batch Operations	Click to operate the units in all groups at once. (See section 4-1-3.)
Group name	The name of the group will appear.
Operation mode	The operation mode of the group will appear.
Set temperature	The set temperature of the group will appear. Note: For Air To Water (PWFY) unit groups, the set water temperature will appear. Note: The temperature unit (°C or °F) can be set on the Basic System settings screen, accessible via the Web Browser for Initial Settings.
Room temperature	Indoor unit return air temperature will appear. Note: The temperature shown may be different from the actual room temperature. Note: For Air To Water (PWFY) unit groups, the current water temperature will appear. Note: The temperature unit (°C or °F) can be selected on the Basic System settings screen, accessible via the Web Browser for Initial Settings.
Room humidity	The reading of the indoor unit return air humidity or the humidity sensor on the ME remote controller (Smart ME controller) will appear. Note: The value will not appear if the indoor unit does not have a humidity measurement function. Note: If a ME remote controller (Smart ME controller) is connected to the group and the built-in humidity sensor is enabled, the reading of the sensor will appear. Note: The indoor unit return air humidity has priority to be displayed over the reading of the humidity sensor on the ME remote controller (Smart ME controller).

Item	Description																																								
Group icons	<p>Each group icon indicates the operation condition of the group. Move the cursor to the icon to display its group name. Clicking the icon will bring up the operation screen. The icons to indicate the operation conditions are shown below.</p> <p>(1) Air conditioning unit group</p> <table><tr><td>ON</td><td>OFF</td><td>Error</td><td>Filter sign ON</td></tr><tr><td></td><td></td><td></td><td></td></tr></table> <table><tr><td>Interlocked LOSSNAY ON *1</td><td>Interlocked LOSSNAY OFF *2</td><td>Schedule set</td><td>HOLD ON</td></tr><tr><td></td><td></td><td></td><td></td></tr></table> <table><tr><td>Energy-saving ON</td><td>Setback ON</td><td>Starting up</td><td>Occupied/Vacant *3*4*5</td></tr><tr><td></td><td></td><td></td><td> (Blue) (Gray)</td></tr></table> <table><tr><td>Bright/Dark *6*7*8</td></tr><tr><td> (Yellow) (Gray)</td></tr></table> <p>Note: Besides the 4-way airflow unit icons, 2-way airflow or ceiling-suspended unit icons are also available. Icons can be selected on the group settings screen, accessible via the Web Browser for Initial Settings.</p> <p>*1 If the LOSSNAY unit is interlocked with the operation of Mr. Slim units, "Interlocked LOSSNAY ON" icon will appear, even when the LOSSNAY unit is operated individually. (Applicable M-NET adapter model: PAC-SF48/50/60/70/80/81MA-E)</p> <p>*2 If a LOSSNAY unit is interlocked with the operation of indoor units in multiple groups, the LOSSNAY unit may be in operation, even when the "Interlocked LOSSNAY OFF" icon is displayed.</p> <p>*3 The Occupancy/Vacancy status icon will appear only when [Show occupancy icon], [Show vacancy icon], or [Show both icons] is selected in the [Occupancy sensor display] section under the [Display Format] section of the Basic System settings screen, accessible via the Web Browser for Initial Settings.</p> <p>*4 The Occupancy/Vacancy status icon will not appear if the remote controller in the group does not have an occupancy sensor.</p> <p>*5 The Occupancy/Vacancy status icon takes priority over the "Interlocked LOSSNAY ON" or "Interlocked LOSSNAY OFF" icon.</p> <p>*6 The Brightness/Darkness status icon will appear only when [Show bright symbol], [Show dark symbol], or [Show both symbols] is selected in the [Brightness sensor display] section under the [Display Format] section of the Basic System settings screen, accessible via the Web Browser for Initial Settings.</p> <p>*7 The Brightness/Darkness status icon will not appear if the remote controller in the group does not have a brightness sensor.</p> <p>*8 The "Setback ON" icon takes priority over the Brightness/Darkness status icon.</p> <p>(2) LOSSNAY unit (ventilator) group</p> <table><tr><td>ON</td><td>OFF</td><td>Error</td><td>Filter sign ON</td></tr><tr><td></td><td></td><td></td><td></td></tr></table> <table><tr><td>Schedule set</td><td>HOLD ON</td><td>Energy-saving ON</td></tr><tr><td></td><td></td><td></td></tr></table>	ON	OFF	Error	Filter sign ON					Interlocked LOSSNAY ON *1	Interlocked LOSSNAY OFF *2	Schedule set	HOLD ON					Energy-saving ON	Setback ON	Starting up	Occupied/Vacant *3*4*5				 (Blue) (Gray)	Bright/Dark *6*7*8	 (Yellow) (Gray)	ON	OFF	Error	Filter sign ON					Schedule set	HOLD ON	Energy-saving ON			
	ON	OFF	Error	Filter sign ON																																					
	Interlocked LOSSNAY ON *1	Interlocked LOSSNAY OFF *2	Schedule set	HOLD ON																																					
	Energy-saving ON	Setback ON	Starting up	Occupied/Vacant *3*4*5																																					
				 (Blue) (Gray)																																					
	Bright/Dark *6*7*8																																								
	 (Yellow) (Gray)																																								
	ON	OFF	Error	Filter sign ON																																					
Schedule set	HOLD ON	Energy-saving ON																																							





Item	Description								
Group icons	(3) Air To Water (PWFY) unit group								
	<table><tr><th>ON</th><th>OFF</th><th>Error</th><th>Schedule set</th></tr><tr><td></td><td></td><td></td><td></td></tr></table>	ON	OFF	Error	Schedule set				
	ON	OFF	Error	Schedule set					
									
	<table><tr><th>HOLD ON</th><th>Energy-saving ON</th></tr><tr><td></td><td></td></tr></table>	HOLD ON	Energy-saving ON						
	HOLD ON	Energy-saving ON							
									
	(4) General equipment group								
	<table><tr><th>ON</th><th>OFF</th><th>Error</th><th>Schedule set</th></tr><tr><td></td><td></td><td></td><td></td></tr></table>	ON	OFF	Error	Schedule set				
	ON	OFF	Error	Schedule set					
									
<table><tr><th>HOLD ON</th></tr><tr><td></td></tr></table>	HOLD ON								
HOLD ON									
									
Note: Besides the lighting icons, pump or card key icons are also available. The icon can be selected on the group settings screen, accessible via the Web Browser for Initial Settings.									

4-1-2. Operating the units in a given group

In the Condition List screen, click one of the group icons to display its operation settings screen, which shows the current operation conditions. Change the desired settings and click [OK] to reflect the changes. Click [Cancel] to return to the previous screen without making any changes.



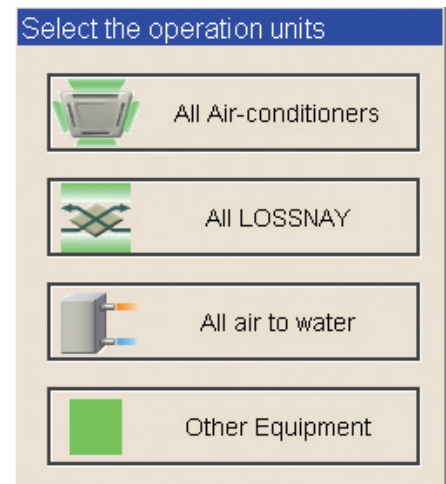
Item	Description
ON/OFF	Click [ON] or [OFF] to turn on or off the units in a given group. Note: Switching this switch will turn on or off the LOSSNAY unit as well that is interlocked with the operation of indoor units in the group. To turn on or off the LOSSNAY unit only, use the "Interlocked LOSSNAY ON/OFF" switch.
Operation mode *1	Click the desired operation mode. Air conditioning unit: Cool, Dry, Fan, Heat, Auto, Setback LOSSNAY unit: Heat Recovery, Bypass, Auto Air To Water (PWFY) unit: Heating, Heating ECO, Hot Water, Anti-freeze, Cooling Note: Only the operation modes available for the unit model will appear. Note: The Setback mode can be selected on the EB-50GU-A, but not on the EB-50GU-J.
Set temperature *1	Click or to adjust the set temperature of the air conditioning unit or the Air To Water (PWFY) unit. Note: The settable temperature ranges depend on the unit model. Note: If the indoor unit supports the dual set point function in the AUTO mode and when the operation mode above is set to Auto or Setback, two set temperatures for Cool mode and Heat mode can be set. Note: The temperature range restrictions settings on the Set Temperature Range Limit settings screen on the Web Browser for Initial Settings will be effective on this screen. Note: The temperature unit (°C or °F) can be selected on the Basic System settings screen, accessible via the Web Browser for Initial Settings.
Air Direction *1	Click or to adjust the air direction. (Mid 3) (Mid 2) (Mid 1) (Mid 0) (Horizontal) (Swing) (Auto) Note: Available air directions depend on the unit model.
Fan Speed *1	Click or to adjust the fan speed. (Low) (Mid 2) (Mid 1) (High) (Auto) Note: Available fan speeds depend on the unit model.

Item	Description
Filter Sign Reset	Click [Reset] to switch between resetting and not resetting the filter sign. The rectangular icon next to Reset will appear in yellow-green when it is set to Reset (). Note: If a filter sign in the group has not been triggered, then the item [Filter Sign Reset] will not appear.
Interlocked LOSSNAY ON/OFF	Click [ON] or [OFF] to turn on or off the interlocked LOSSNAY unit. Note: For a group that is not connected to an interlocked LOSSNAY unit (ventilator), the item [Interlocked ventilator ON/OFF] will not appear.
Fan speed of interlocked LOSSNAY	Click  or  to adjust the fan speed of the interlocked LOSSNAY unit (ventilator). Note: For a group that is not connected to an interlocked LOSSNAY unit, the item [Fan speed of interlocked LOSSNAY] will not appear.
Prohibition icon	Prohibition icon  will appear next to the item whose operation is prohibited. If one or more operation items are prohibited, Centrally Controlled will appear.

*1 The item may not be displayed, depending on the unit model.

4-1-3. Operating the units in all groups

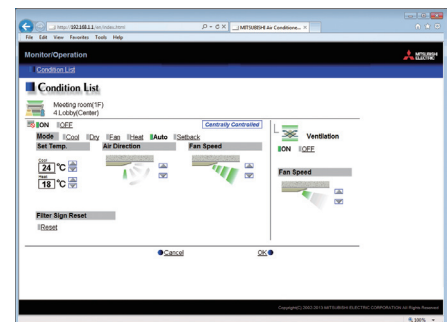
- (1) In the Condition List screen, click [Batch Operations]. If air conditioner group, LOSSNAY unit (ventilator) group, Air To Water (PWFY) unit group, and general equipment group exist together in the same system, a screen to select a group type will appear. Click one of the group types to change its settings.



- (2) On the operation settings screen, change the desired settings and click [OK] to reflect the changes. Click [Cancel] to return to the previous screen without making any changes.

Note: The settable temperature range is limited for the group whose set temperature restrictions settings have been made.

Note: If any group out of the given groups has an operation item that is prohibited, the item for the group can not be operated.



This product is designed and intended for use in the residential,
commercial and light-industrial environment.

The product at hand is based on the following EU regulations:

- Electromagnetic Compatibility Directive 2004/108/EC
- Restriction of Hazardous Substances 2011/65/EU

Please be sure to put the contact address/telephone number
on this manual before handing it to the customer.

mitsubishi **ELECTRIC CORPORATION**

HEAD OFFICE: TOKYO BLDG., 2-7-3, MARUNOUCHI, CHIYODA-KU, TOKYO 100-8310, JAPAN

WT06536X01