

SERVICE PARTS LIST FOR MITSUBISHI ELECTRIC REFRIGERATION SYSTEMS:HOT WATER HEAT PUMP UNIT

Series : CAHV-P•YA-HPB(-BS)

REVISED

Sept. 2023

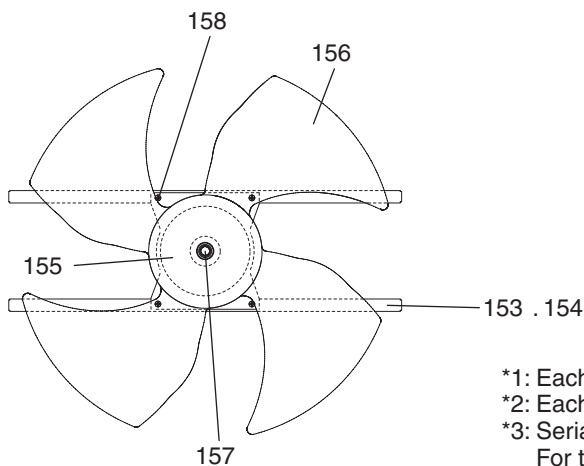
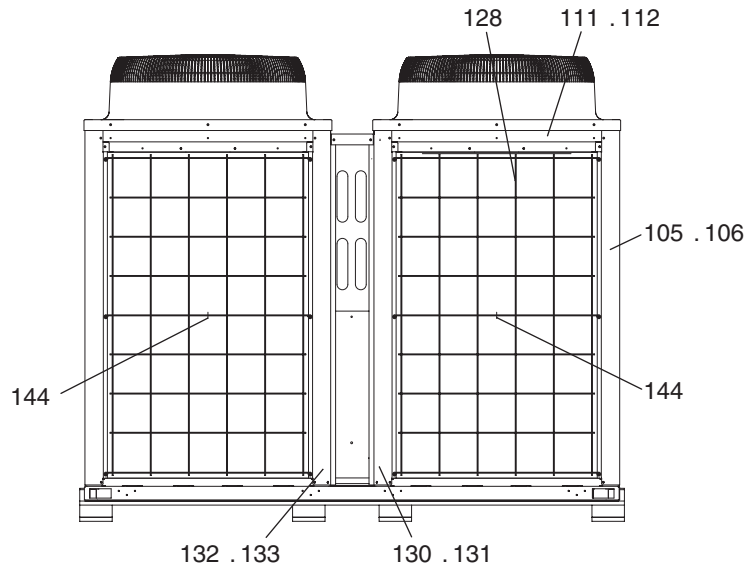
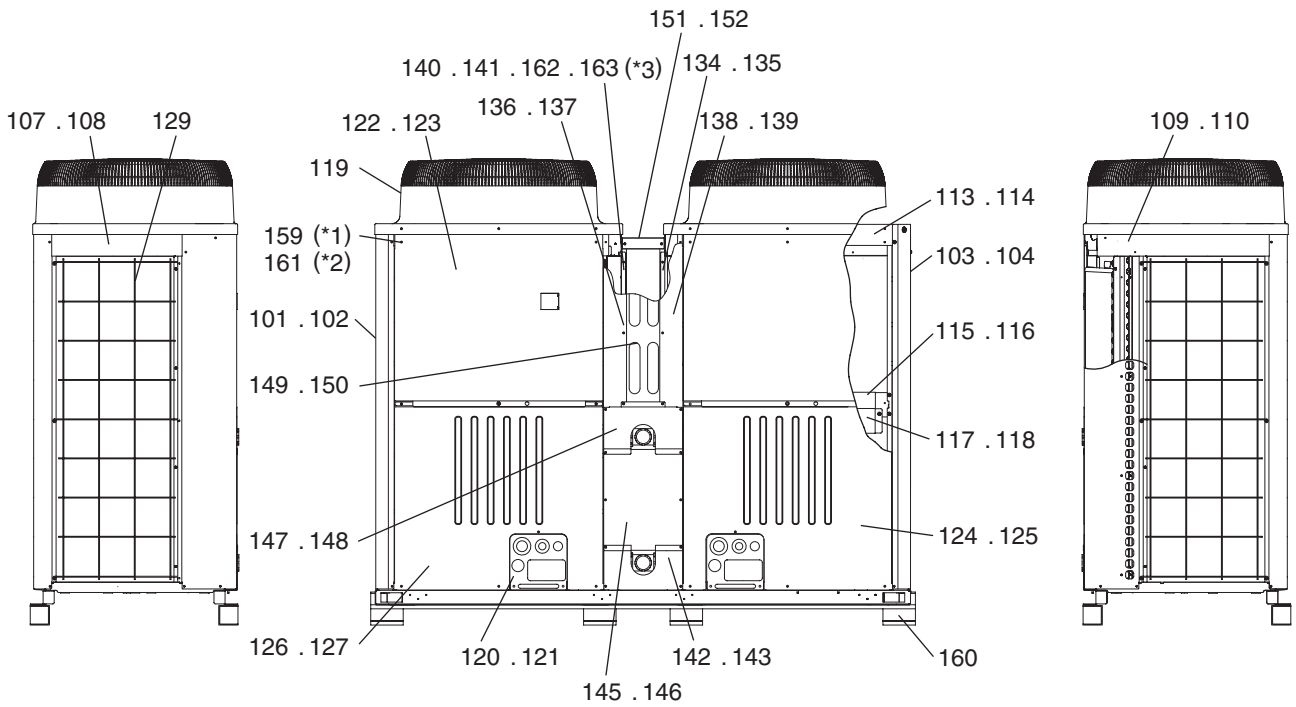
BWE1020D

INDEX
CAHV-P500YA-HPB CAHV-P500YA-HPB-BS

Part information update day : 2023/09/14

Please change the old catalog (issued Mar. 2020, No.BWE1020C to this new catalog.
Content of revision : Some of parts are changed.

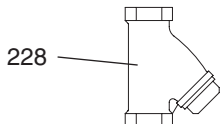
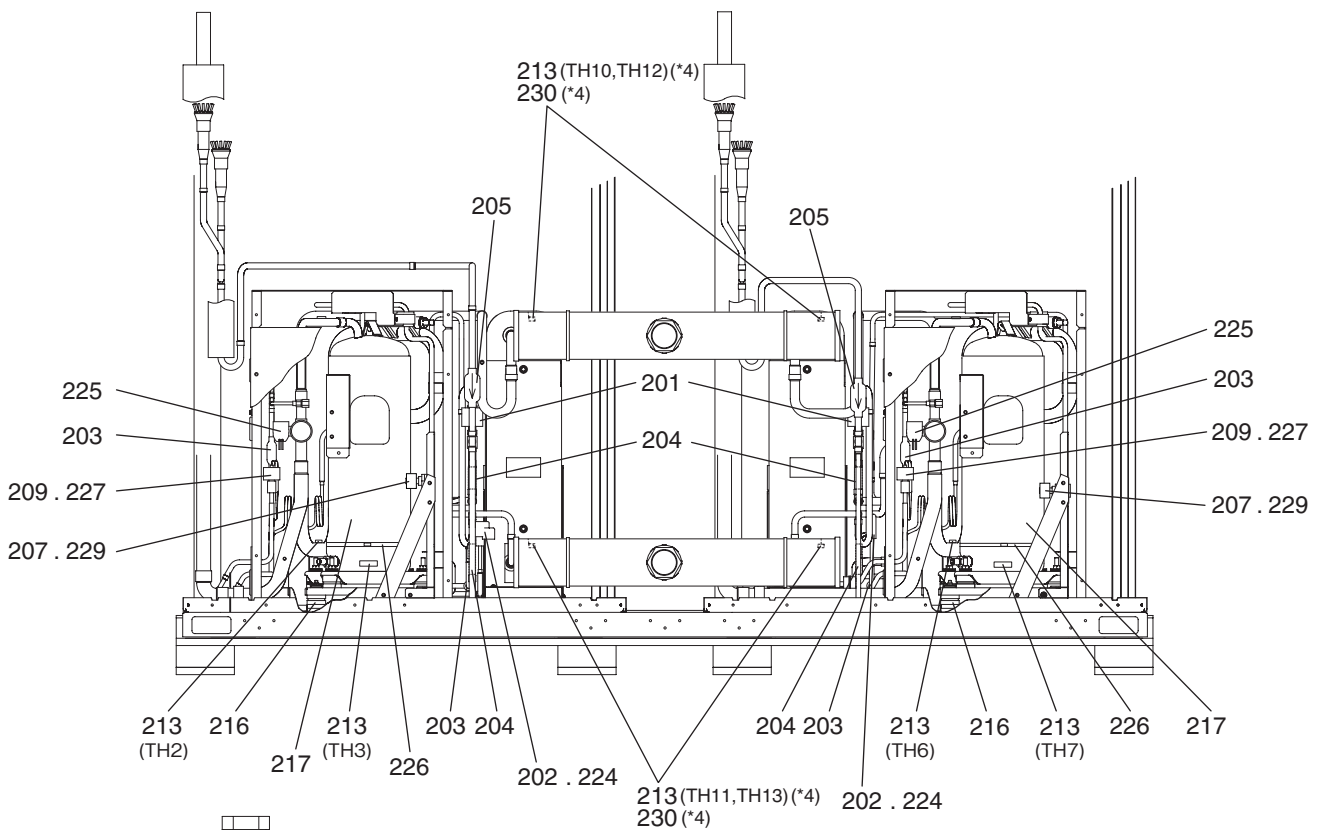
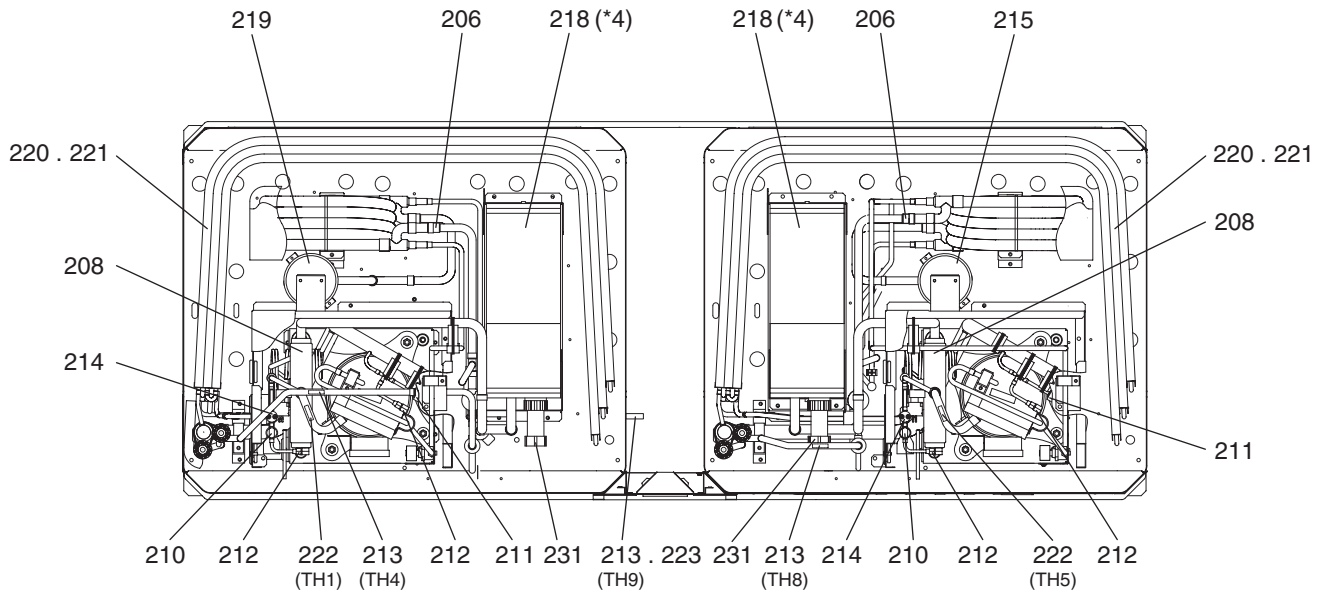




- *1: Each unit requires 126 H screws (Part No. 159).
- *2: Each unit requires 36 WFT screws (Part No. 161) .
- *3: Serial number 12*****
For the units manufactured before Feb. 2012 (Part No. 140,141) .
Serial number 13*****
For the units manufactured after Mar. 2012 (Part No. 162,163) .

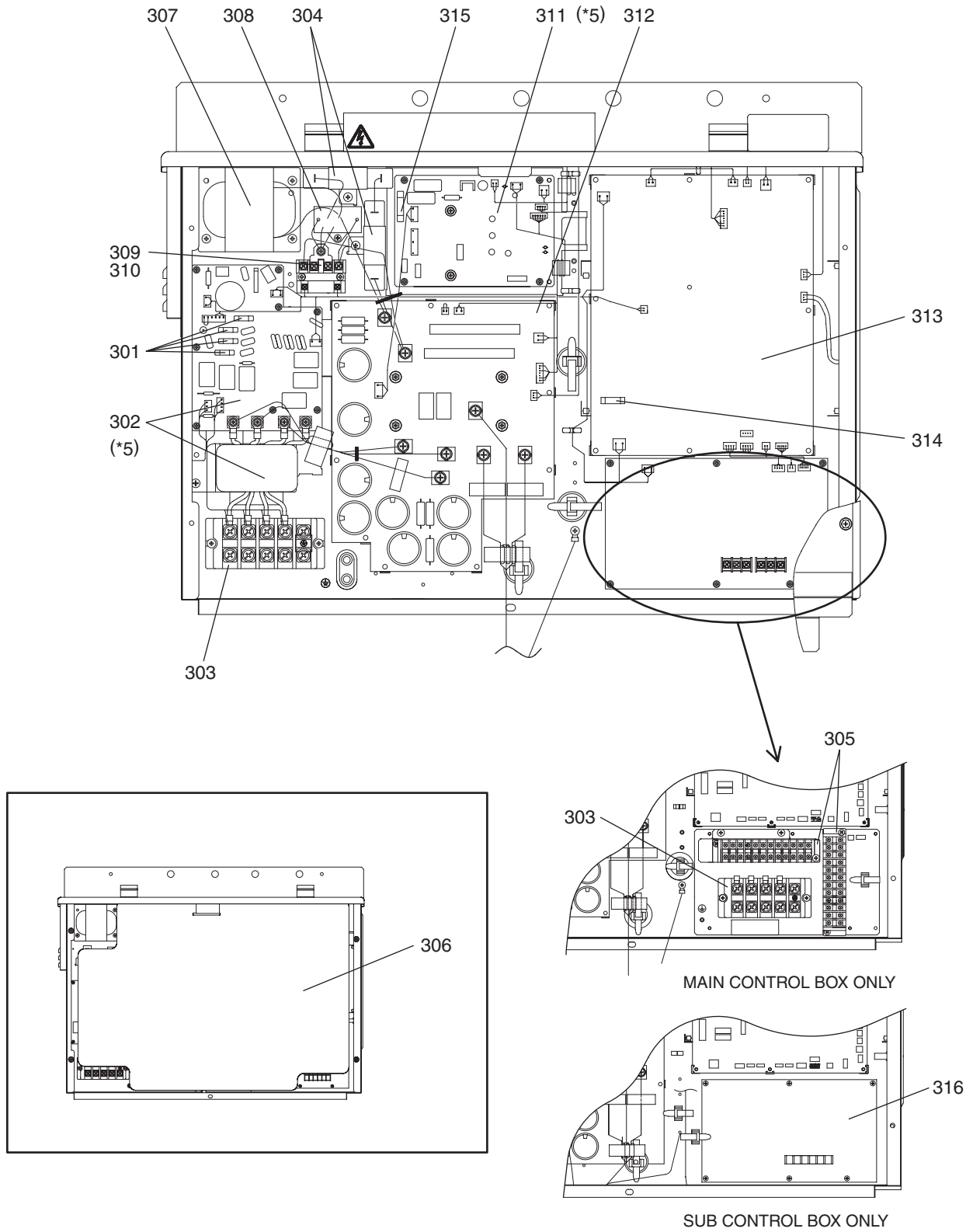
No.	Part No.	Part Name	Spec.	CAHV-P500YA-HPB	CAHV-P500YA-HPB-BS					Dwg. No.	Notes for the models	Revision info.
101	R11 019 626	Pillar LF		1						KB02A011G07		
102	R11 020 626	Pillar LF	BS	1						KB02A011G08		
103	R11 014 626	Pillar RF		1						KB02A012G07		
104	R11 015 626	Pillar RF	BS	1						KB02A012G08		
105	R63 002 627	Pillar B		2						KB02A013G07		
106	R63 003 627	Pillar B	BS	2						KB02A013G08		
107	R63 038 162	Frame assy L		2						KD00G100G01		
108	R63 040 162	Frame assy L	BS	2						KD00G100G02		
109	R63 039 162	Frame assy R		2						KD00G101G01		
110	R63 041 162	Frame assy R	BS	2						KD00G101G02		
111	R63 001 216	Frame assy B		2						KB00C162G10		
112	R63 002 216	Frame assy B	BS	2						KB00C162G11		
113	R63 004 668	Frame F		2						KB02J208H01		
114	R63 005 668	Frame FB	BS	2						KB02J208G06		
115	R63 013 111	Frame assy MU		2						KB00C887G01		
116	R63 014 162	Frame assy MU	BS	2						KB00C887G07		
117	R12 024 215	Frame assy MB		2						KC00G639G01		
118	R12 026 215	Frame assy MB	BS	2						KC00G639G03		
119	R63 4H6 118	Fan guard		2	2					KB25A008H08		Chg.
120	R61 095 690	Cover piping	R2	2						KB02L001G11		Chg.
121	R61 094 690	Cover piping	R2 BS	2						KB02L001G14		Chg.
122	R12 007 669	Panel assy FU		2						KN00G568G07		
123	R12 040 661	Panel assy FU	BS	2						KN00G568G08		
124	R61 003 652	Panel assy FB		1						KB02B392H04		
125	R61 004 652	Panel assy FB	BS	1						KB02B392G06		
126	R61 157 651	Panel assy FBL		1						KB02J308H02		
127	R61 162 651	Panel assy FBL	BS	1						KB02J308G03		
128	R63 004 611	Fin guard B		2	2					KB07T208G01		
129	R61 007 611	Fin guard LR		2	2					KB07C043G04		Chg.
130	R12 001 626	Pillar B(R)		1						KC02B363G05		
131	R12 013 626	Pillar B(R)	BS	1						KC02B363G06		
132	R12 002 626	Pillar B(L)		1						KC02B363G07		
133	R12 012 626	Pillar B(L)	BS	1						KC02B363G08		
134	R12 003 626	Pillar RF		1						KC02B338G09		
135	R12 007 626	Pillar RF	BS	1						KC02B338G10		
136	R12 004 626	Pillar F(L)		1						KC02B337G13		
137	R12 008 626	Pillar F(L)	BS	1						KC02B337G14		
138	R12 005 626	Pillar F(R)		1						KC02B337G15		
139	R12 009 626	Pillar F(R)	BS	1						KC02B337G16		
140	R12 006 626	Pillar LF		1						KC02B338G11	For the units manufactured before Feb. 2012.	
141	R12 010 626	Pillar LF	BS	1						KC02B338G12	For the units manufactured before Feb. 2012.	
142	R12 075 661	Panel B		1						KC02L798G01		
143	R12 076 661	Panel B	BS	1						KC02L798G02		
144	R63 L59 060	Guard fixed plate		2	2					W893727H04		Chg.
145	R12 009 669	Panel M		1						KC02G150G07		

No.	Part No.	Part Name	Spec.	CAHV-P500YA-HPB		CAHV-P500YA-HPB-BS		Dwg. No.	Notes for the models	Revision info.
146	R12 041 661	Panel M	BS	1				KC02G150G08		
147	R12 077 661	Panel 1		1				KC02L797G01		
148	R12 078 661	Panel 1	BS	1				KC02L797G02		
149	R12 011 669	Panel assy F		1				KC00F730G03		
150	R12 043 661	Panel assy F	BS	1				KC00F730G04		
151	R12 012 669	Panel TOP		1				KC02G028G05		
152	R12 001 641	Panel TOP	BS	1				KC02G028G06		
153	R63 4H6 140	Base fan		4				KB02D050H01		
154	R63 4H7 140	Base fan	BS	4				KB02D050G05		
155	R61 122 220	Motor	YC920IA	2	2			P780109X03		
156	R61 001 300	Fan		2	2			KB25A009H05		
157	R63 4H6 122	Box nut	M12 CH	2	2			P552000X01		
158	R63 014 087	Upset screw	M6 x 10	8	8			P516047X01		
159	R61 048 087	H screw	5 x 10 KNURLED (30 pcs)	5	5			KB00H418G14	*1	
160	R61 016 130	Attachment leg		8	8			KD02T773G01		
161	R63 006 087	WFT screw	5 x 12 (30 pcs)	2	2			KB00H418G01	*2	
162	R12 014 626	Pillar assy LF		1				KC00H676G01	*3 For the units manufactured after Mar. 2012.	
163	R12 015 626	Pillar assy LF	BS	1				KC00H676G02	*3 For the units manufactured after Mar. 2012.	



*4: When part 213 (TH10 through TH13) or part 218 is replaced, replace part 230 as well.

No.	Part No.	Part Name	Spec.	CAHV-P500YA-HPB	CAHV-P500YA-HPB-BS								Dwg. No.	Notes for the models	Revision info.
201	R12 007 920	Linear expansion valve	EFM-A0YGMD-14	2	2								KC78H427G06		
202	R63 S84 401	Expansion valve	CAM-B50	2	2								P632418X01		
203	R63 0H4 454	Strainer	UL R410A	4	4								W882823G02		
204	R63 984 904	Check valve	BCV-804DY	4	4								P639163X01		
205	R63 960 907	Strainer		2	2								W882826G01		
206	R63 Y03 454	Strainer		2	2								W893281G01		
207	R11 021 921	Solenoid valve	SEV-502DYFQ69	2	2								P631301X01		
208	R63 Y05 154	Four way valve	STF-07	2	2								P633119X01		
209	R63 001 921	Solenoid valve	VPV	2	2								P631295X01		
210	R12 006 936	Pressure sensor	HP D272	2	2								P418100X01		
211	R12 007 936	Pressure sensor	LP D272	2	2								P418099X01		
212	R12 005 904	Check joint		4	4								P666009X01		
213	R63 670 202	Thermistor	MDW103H	11	11								P425496X01	*4 <TH2 ~ 4,6 ~ 13>	
214	R12 013 965	Pressure switch assy		2	2								KC78F672G06		
215	R12 007 477	Receiver assy	(BS)	1	1								KC00B385G09		
216	R63 G95 104	Rubber mount		16	16								W836228H01		
217	R69 202 478	Compressor	HEK84FC1-Y	2	2								EP10124B02		
218	R12 018 103	Water side HEX. assy		2	2								KW00C344G01	*4	
219	R12 008 477	Receiver assy	(BS)	1	1								KC00B385G11		
220	R12 039 105	Heat exchanger	3LS (EU)	2									KC01G160G25		Chg.
221	R12 038 105	Heat exchanger	3L BS		2								KC01G160G26		Chg.
222	R63 911 202	Thermistor		2	2								P425416X02	<TH1,5>	
223	R61 001 310	Sensor holder		1	1								KB25B471H04		Chg.
224	R63 011 401	Solenoid coil	CAM L1800 WHITE	2	2								P472059X02		
225	R63 Y16 243	Solenoid coil	STF DV	2	2								P472024X01		
226	R63 Y07 237	Belt heater		2	2								P493781X02		
227	R61 006 243	Solenoid coil	VPV Y	2	2								P472046X01		
228	R12 007 907	Strainer	1-1/2B	1	1								P641138X01		
229	R61 073 243	Solenoid coil	SEV 240V50	2	2								P472015X01		
230	R12 002 014	Insulator		4	4								KC33F724H01	*4	
231	R12 003 576	O-ring	NJPK 25Su	4	4								KC00U937G01		



*5: No.302 and No.311 should be replaced together.

mitsubishi
electric
corporation

BWE1020D (20230930)