

INDOOR UNIT

No. OBB968

PARTS CATALOG

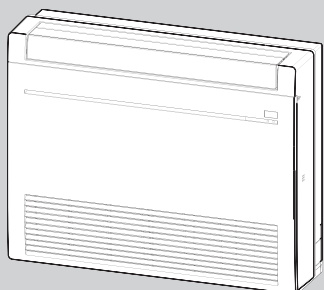
Models

MFZ-KX09NL - CA1

MFZ-KX12NL - CA1

MFZ-KX15NL - CA1

MFZ-KX18NL - CA1



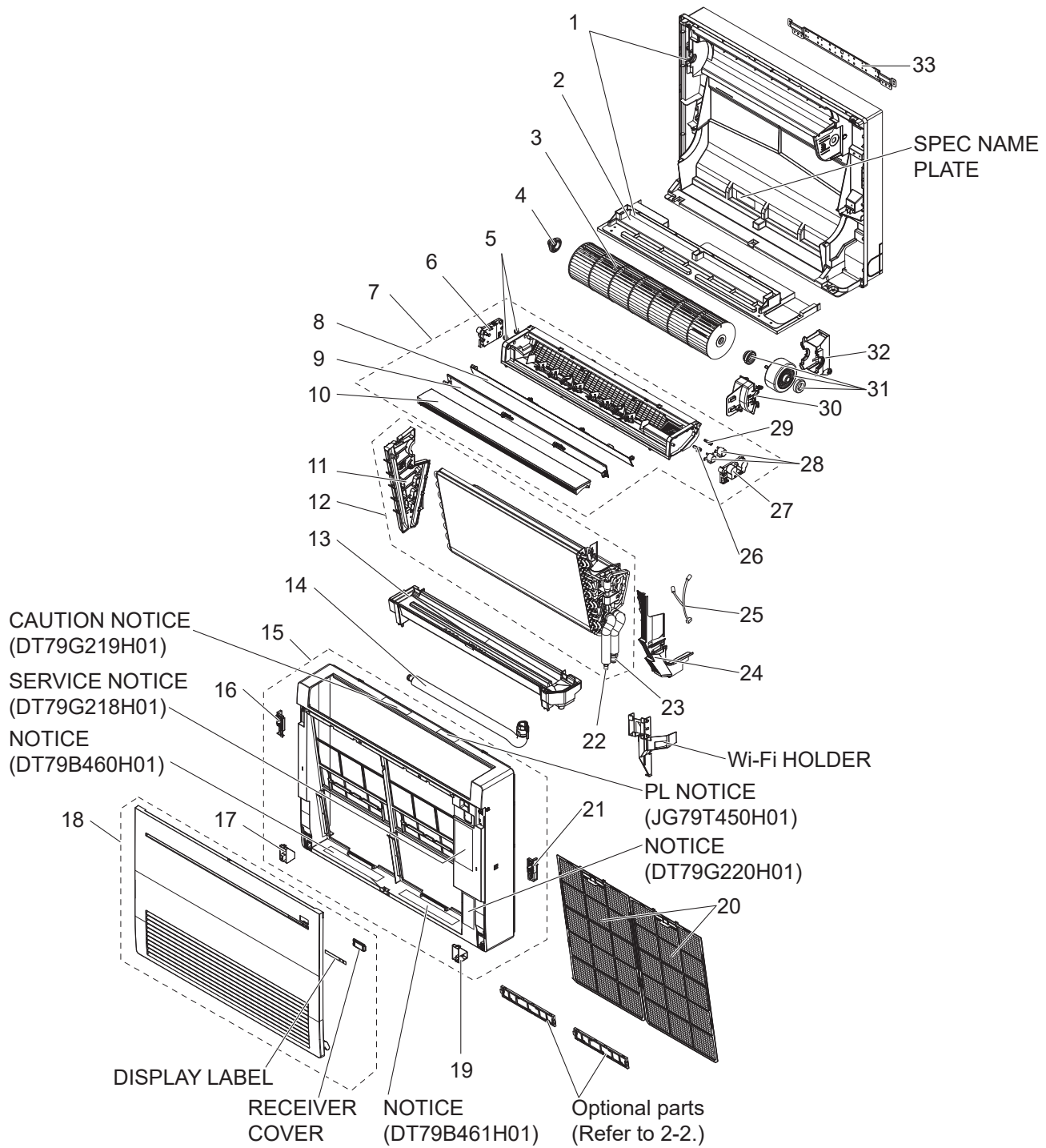
CONTENTS

- 1. SERVICE PARTS LIST 2
- 2. OPTIONAL PARTS 6

SERVICE MANUAL (OBH968)

MFZ-KX09NL MFZ-KX12NL MFZ-KX15NL MFZ-KX18NL

1-1. INDOOR UNIT STRUCTURAL PARTS, HEAT EXCHANGER AND FUNCTIONAL PARTS



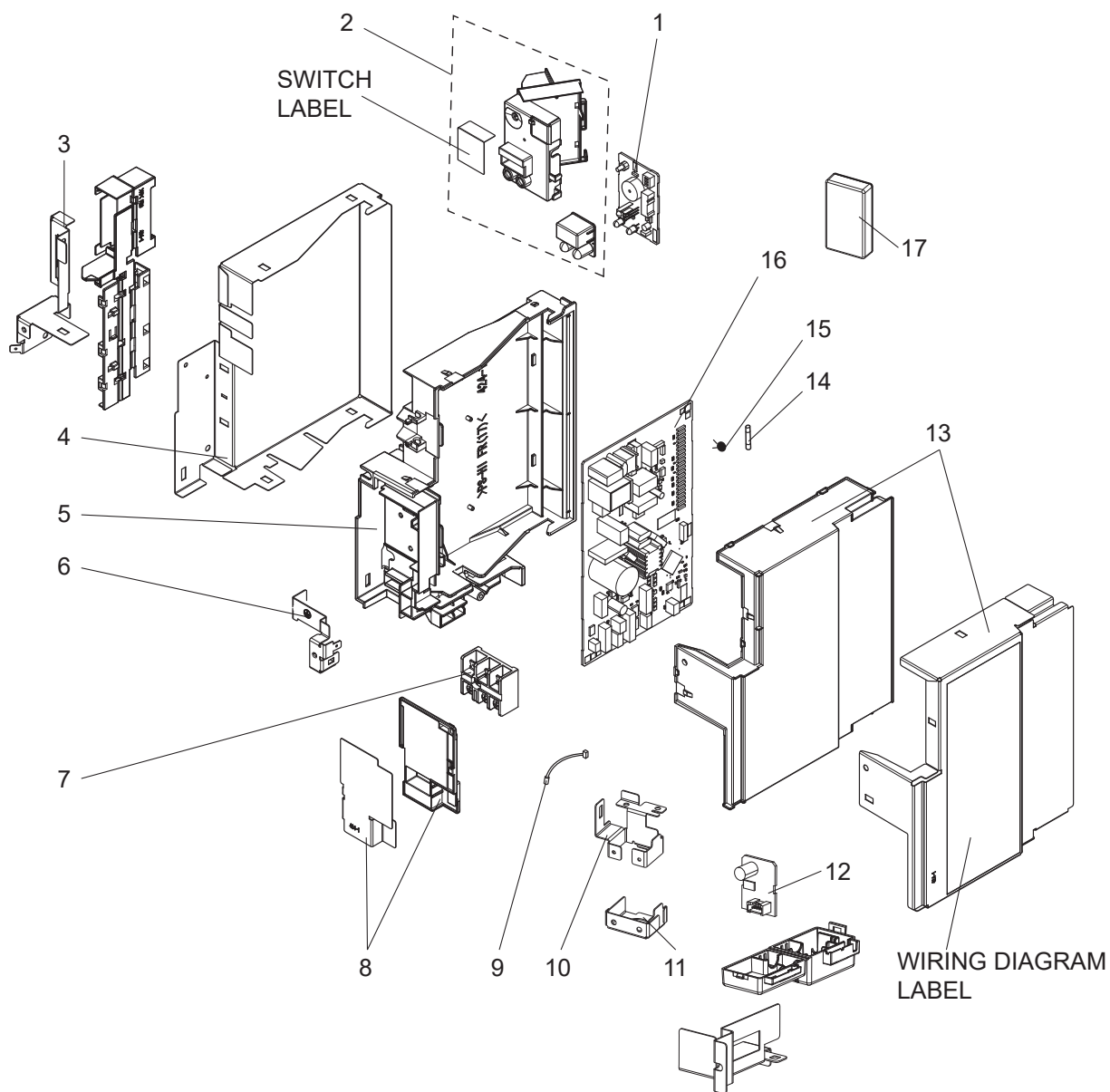
1-1. INDOOR UNIT STRUCTURAL PARTS, HEAT EXCHANGER AND FUNCTIONAL PARTS

1. The part quantity below indicates the required number of pieces per unit.

No.	Part No.	Part Name	MFZ-KX09NL- CA1	MFZ-KX12NL- CA1	MFZ-KX15NL- CA1	MFZ-KX18NL- CA1	Symbol in Wiring Diagram	Remarks [Drawing No.]
1	T2W EC9 234	BOX ASSEMBLY	1	1	1	1		Includes base, without spec name plate
2	—	BASE	1	1	1	1		[SQ25A544G07]
3	M21 EAA 302	LINE FLOW FAN ASSEMBLY	1	1	1	1		
4	M21 EA3 509	BEARING ASSEMBLY	1	1	1	1		
5	M21 EA5 071	VANE SLEEVE	2	2	2	2		
6	M21 EA4 306	MULTI-FLOW VANE MOTOR UNIT	1	1	1	1	MV3	
7	M21 EAY 235	NOZZLE ASSEMBLY	1	1	1	1		
8	M21 EAA 040	HORIZONTAL VANE (BACK)	1	1	1	1		with shaft
9	M21 EA9 040	HORIZONTAL VANE (FRONT)	1	1	1	1		with shaft
10	M21 EA8 040	MULTI-FLOW VANE	1	1	1	1		with shaft
11	—	HAIRPIN HOLDER ASSEMBLY	1	1	1	1		[DQ00T279G05]
12	T2W EN5 620	INDOOR HEAT EXCHANGER	1	1				
12	T2W EN6 620	INDOOR HEAT EXCHANGER			1	1		
13	M21 EA5 700	DRAIN PAN ASSEMBLY	1	1	1	1		
14	M21 7K1 703	DRAIN HOSE ASSEMBLY	1	1	1	1		
15	T2W ED4 000	PANEL ASSEMBLY	1	1	1	1		Includes notices (SERVICE, PL)
16	M21 EA0 099	HOOK (LEFT) ASSEMBLY	1	1	1	1		
17	M21 EA8 039	ARM HOLDER (LEFT)	1	1	1	1		
18	T2W EDP 010	FRONT PANEL	1	1	1	1		Includes receiver cover and display label
19	M21 EA9 039	ARM HOLDER (RIGHT)	1	1	1	1		
20	T2W ECD 100	NANO PLATINUM FILTER	2	2	2	2		
21	M21 EA1 099	HOOK (RIGHT) ASSEMBLY	1	1	1	1		
22	M21 L3V 664	UNION (LIQ) (ø6.35)	1	1	1	1		ø1/4 (ø6.35)
23	M21 L3V 663	UNION (GAS) (ø9.52)	1	1				ø3/8 (ø9.52)
23	M21 L5V 663	UNION (GAS)(ø12.7)			1	1		ø1/2 (ø12.7)
24	—	WATER COVER	1	1	1	1		[DQ00T288G04]
25	T2W ED8 305	INDOOR COIL THERMISTOR	1	1	1	1	RT12, RT13	
26	M21 EA5 049	VANE MOTOR SHAFT (FRONT)	1	1	1	1		
27	M21 EA1 506	VANE MOTOR SUPPORT	1	1	1	1		
28	M21 EA5 306	VANE MOTOR	2	2	2	2	MV1, MV2	HORIZONTAL VANE MOTOR
29	M21 EA6 049	VANE MOTOR SHAFT (BACK)	1	1	1	1		
30	M21 EA3 023	MOTOR BAND	1	1	1	1		
31	T2W EFE 300	INDOOR FAN MOTOR ASSEMBLY	1	1	1		MF	RC0J30-□□ Includes rubbers set
31	T2W EFL 300	INDOOR FAN MOTOR ASSEMBLY				1	MF	RC0J40-□□ Includes rubbers set
32	M21 EA3 791	MOTOR BED	1	1	1	1		
33	T2W L3V 233	BACK PLATE	1	1	1	1		

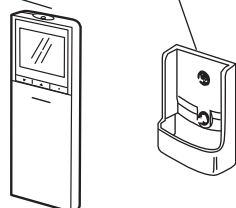
MFZ-KX09NL MFZ-KX12NL MFZ-KX15NL MFZ-KX18NL

1-2. INDOOR UNIT ELECTRICAL PARTS



1-3. ACCESSORY AND REMOTE CONTROLLER

21 (Optional Parts 2-1.)



1-2. INDOOR UNIT ELECTRICAL PARTS

1. The part quantity below indicates the required number of pieces per unit.

2. The circled No. indicates that the part is not shown in the figure.

No.	Part No.	Part Name	MFZ-KX09NL - [CA1]	MFZ-KX12NL - [CA1]	MFZ-KX15NL - [CA1]	MFZ-KX18NL - [CA1]	Symbol in Wiring Diagram	Remarks [Drawing No.]
1	T2W EBT 328	DISPLAY RECEIVER P.C.BOARD	1	1	1	1		
2	T2W EAT 012	SWITCH HOLDER SET	1	1	1	1		Includes switch label
3	—	TB COVER	1	1	1	1		[DY02B654G01]
4	—	PB COVER LEFT	1	1	1	1		[DY02A632G04]
5	—	PB BOX	1	1	1	1		[DY25A631G06]
6	—	EARTH PLATE	1	1	1	1		[DY02B655G03]
7	M21 EBD 375	TERMINAL BLOCK	1	1	1	1	TB	
8	—	VA CLAMP ASSEMBLY	1	1	1	1		[DK00G051G03]
9	M21 EAA 305	ROOM TEMPERATURE THERMISTOR	1	1	1	1	RT11	
10	—	CONDUIT COVER	1	1	1	1		[DY02J225G01]
11	—	CONDUIT BASE	1	1	1	1		[DY02J224G01]
12	T2W EA4 334	REFRIGERANT SENSOR (R454B)	1	1	1	1		
13	—	PB COVER RIGHT ASSEMBLY	1	1	1	1		[DK00G050G56] Includes wiring diagram label
14	T2W EA3 382	FUSE	1	1	1	1	F11	T6.3AL250V
15	T2W EA3 313	VARISTOR	1	1	1	1	NR11	
16	T2W FT4 450	ELECTRONIC CONTROL P.C.BOARD	1					
16	T2W FT5 450	ELECTRONIC CONTROL P.C.BOARD		1				
16	T2W FT6 450	ELECTRONIC CONTROL P.C.BOARD			1			
16	T2W FT7 450	ELECTRONIC CONTROL P.C.BOARD				1		
17	T2W EAT 441	WIFI INTERFACE	1	1	1	1		
⑮	—	LEAD ASSEMBLY (ELECTRONIC CONTROL P.C.BOARD TO TERMINAL BLOCK)	1	1	1	1		[SM78L302G01]
⑮	—	LEAD ASSEMBLY (ELECTRONIC CONTROL P.C.BOARD TO CONNECTION CONNECTOR OF VANE MOTOR)	1	1	1	1		[SM78L300G01]
⑮	—	LEAD ASSEMBLY (ELECTRONIC CONTROL P.C.BOARD TO DISPLAY RECEIVER P.C.BOARD)	1	1	1	1		[SM78L301G01]

1-3. ACCESSORY AND REMOTE CONTROLLER

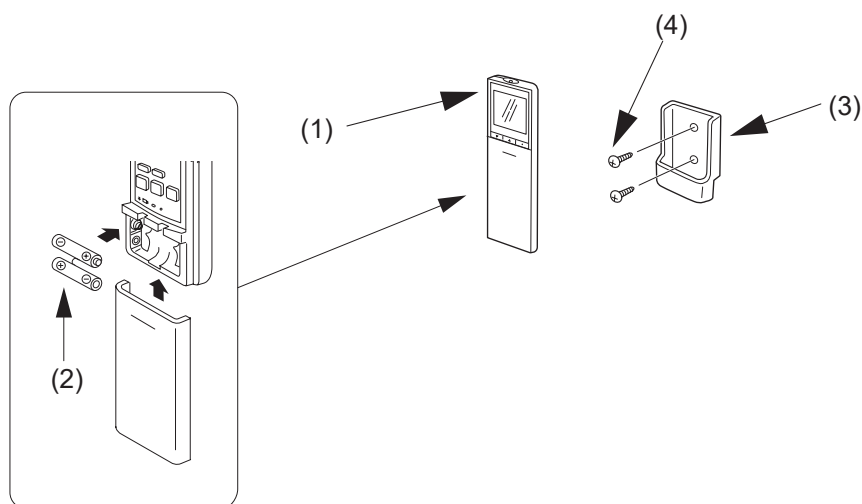
1. The part quantity below indicates the required number of pieces per unit.

No.	Part No.	Part Name	MFZ-KX09NL - [CA1]	MFZ-KX12NL - [CA1]	MFZ-KX15NL - [CA1]	MFZ-KX18NL - [CA1]	Symbol in Wiring Diagram	Remarks
21	—	REMOTE CONTROLLER	1	1	1	1		SH24X MAC-FL116M-E Includes REMOTE CONTROLLER HOLDER

2-1. ACCESSORY AND REMOTE CONTROLLER

Model	Part No. English
MFZ-KX09NL MFZ-KX12NL MFZ-KX15NL MFZ-KX18NL	MAC-FL116M-E

(1)	Wireless remote controller	1
(2)	Battery (AAA) for (1)	2
(3)	Remote controller holder	1
(4)	Screws for the remote controller holder (3) 3.5 × 16 mm (Black)	2



2-2. AIR CLEANING FILTER

[ANTI-ALLERGY ENZYME FILTER]

Every 3 months:

- Remove dirt by a vacuum cleaner.

When dirt cannot be removed by vacuum cleaning:

- Soak the filter and its frame in lukewarm water before rinsing it.
(Diluted mild detergents can be used when dirt cannot be removed.)
- After washing, dry it well in shade.

Every year:

- Replace it with a new air cleaning filter for best performance.

Model	Part No.
MFZ-KX09NL MFZ-KX12NL MFZ-KX15NL MFZ-KX18NL	MAC-408FT-E

[MICROPARTICLE CATCHING FILTER]

Removes the microparticles from the air by means of static electricity.

Back side of air filter

Every 3 months:

- Remove dirt by a vacuum cleaner.
- Put it back to its original position, and install all tabs of the air cleaning filter.
- Do not wash it with water. Replace it with a new air cleaning filter when tobacco tar or oil stains adhere to it.

Every 3 year:

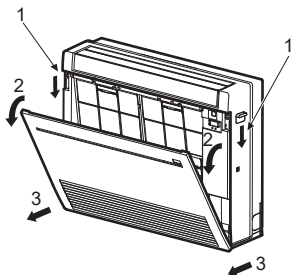
- Replace it with a new air cleaning filter for best performance.

Model	Part No.
MFZ-KX09NL MFZ-KX12NL MFZ-KX15NL MFZ-KX18NL	MAC-EMF515FT-E

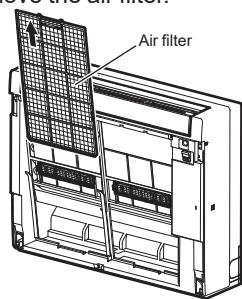
Replacement of the air cleaning filter

(1) Remove the front panel.

1. Push down the tab on the both sides of the unit to open the front panel.
2. Pull the front panel toward you to remove it.
3. Open the front panel completely and remove it.

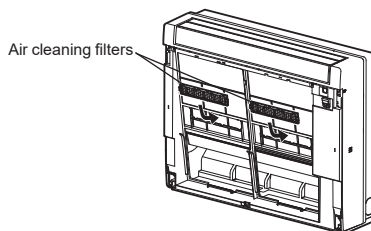


(2) Remove the air filter.

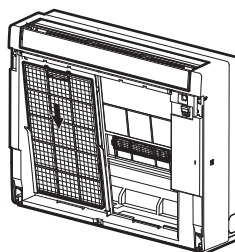


(3) Replace the air cleaning filter.

Fix the filter with the tabs securely.



(4) Install the air filter.



(5) Securely close the front panel.

Install the front panel by the removal procedure in reverse. Refer to (1) 1 – 3.

mitsubishi electric corporation

HEAD OFFICE: TOKYO BUILDING, 2-7-3, MARUNOUCHI, CHIYODA-KU, TOKYO 100-8310, JAPAN

© Copyright 2025 MITSUBISHI ELECTRIC CORPORATION
Published: Jan. 2025. No. OBB968
Made in Japan

Specifications are subject to change without notice.