

SPLIT-TYPE AIR CONDITIONERS

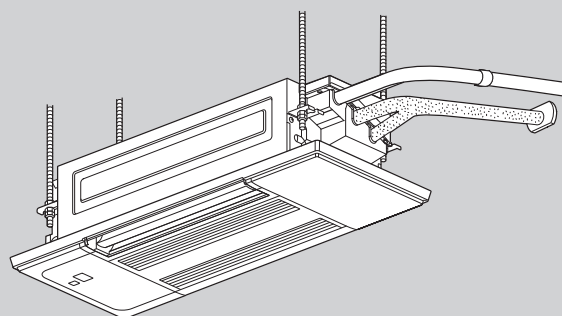
INDOOR UNIT

No. OBB967

PARTS CATALOG

Models

MLZ-KX06NL - CA1



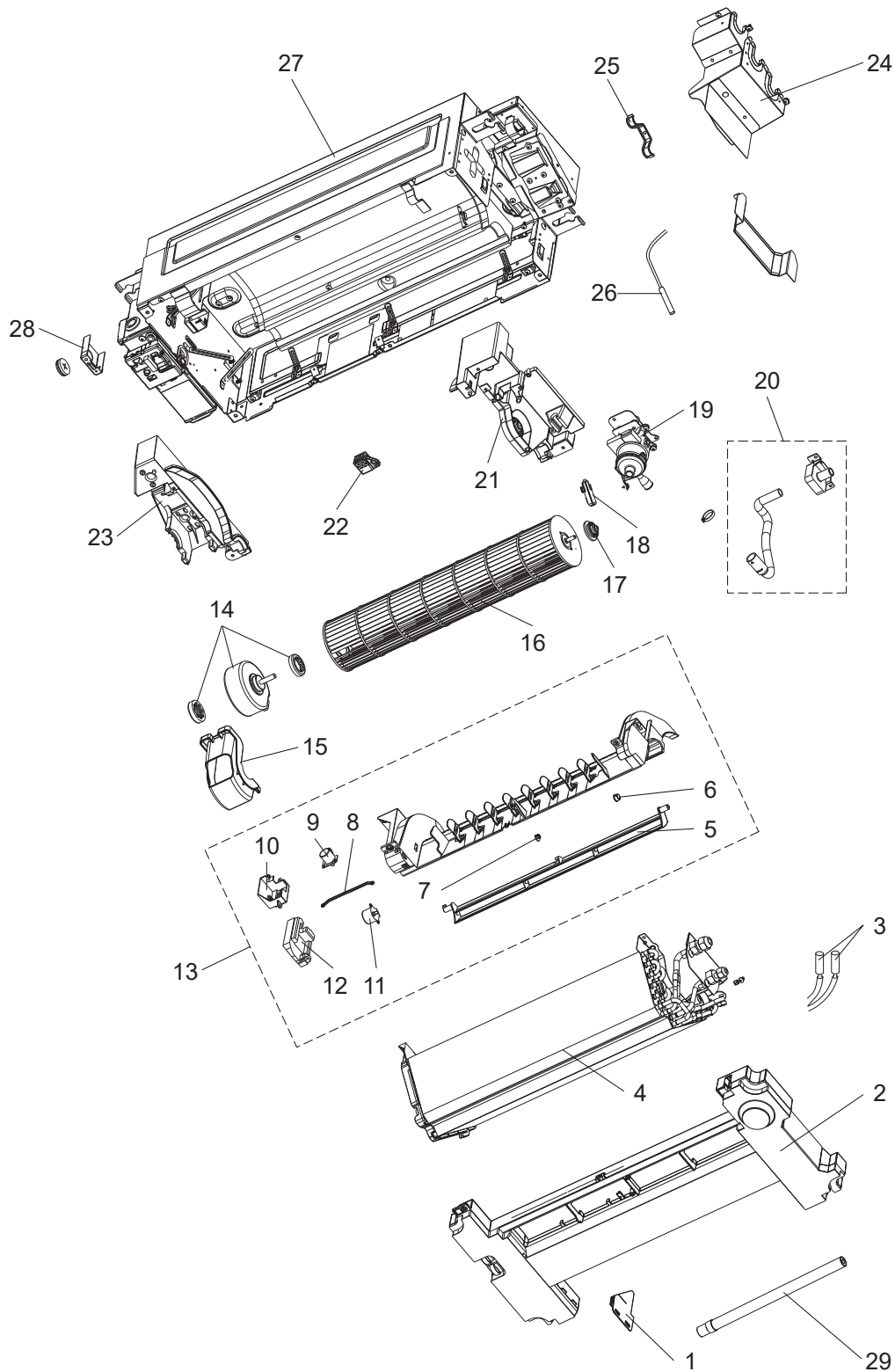
CONTENTS

- 1. SERVICE PARTS LIST 2
- 2. OPTIONAL PARTS 6

SERVICE MANUAL (OBH967)

MLZ-KX06NL

1-1. INDOOR UNIT STRUCTURAL PARTS AND FUNCTIONAL PARTS



1-1. INDOOR UNIT STRUCTURAL PARTS AND FUNCTIONAL PARTS

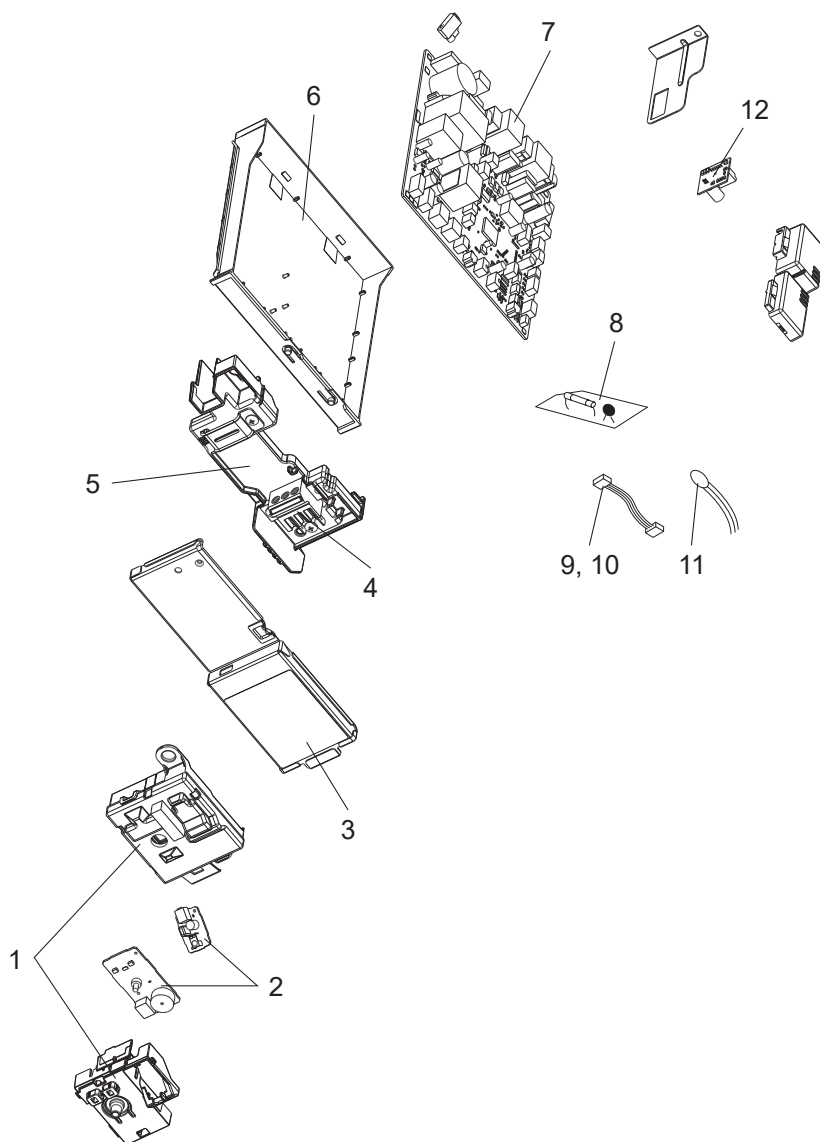
1. The part quantity below indicates the required number of pieces per unit.

2. The circled No. indicates that the part is not shown in the figure.

No.	Part No.	Part Name	MLZ-KX06NL-CA1	Symbol in Wiring Diagram	Remarks
1	—	MOTOR GUARD	1		DK25G404G02
2	M21 EA1 700	DRAIN PAN ASSEMBLY	1		
3	M21 EBE 307	COIL TEMPERATURE THERMISTOR	1	RT12, RT13	
4	M21 ENK 620	INDOOR HEAT EXCHANGER	1		
5	M21 EAG 040	VANE	1		
6	M21 EA0 071	VANE SLEEVE	1		
7	M21 EA1 071	VANE SLEEVE C	1		
8	M21 L9V 915	CRANK	1		
9	M21 L9V 306	VERTICAL VANE MOTOR	1	MV1	
10	M21 T0T 953	VANE MOTOR SUPPORT	1		
11	M21 EAL 306	HORIZONTAL VANE MOTOR	1	MV2	
12	M21 T0T 980	CUSHION	1		
13	T2W EAD 279	STABILIZER ASSEMBLY	1		
14	T2W EFK 300	MOTOR ASSEMBLY	1	MF	RC0J30-□□ Includes rubbers set
15	M21 T0T 024	MOTOR BAND	1		
16	T2W EBE 302	LINE FLOW FAN ASSEMBLY	1		
17	M21 L4V 504	BEARING MOUNT ASSY	1		
18	M21 T0T 310	DRAIN SENSOR HOLDER	1		
19	T2W EA8 303	DRAIN PUMP ASSEMBLY	1	DP	
20	T2W EAK 703	DRAIN PIPE ASSEMBLY	1		
21	—	BEARING HOLDER ASSEMBLY	1		DK00J653G02
22	—	ROOM THERMISTOR HOLDER	1		DY25C128G01
23	—	MOTOR HOLDER ASSEMBLY	1		SQ00B408G01
24	T2W EA6 711	DRAIN COVER ASSEMBLY	1		
25	M21 L9V 708	PIPE BAND	1		
26	M21 EAA 312	DRAIN SENSOR	1	DS	
27	—	CABINET ASSEMBLY	1		DK00Y354G28
28	—	CONDUIT PLATE	1		DY02C582G01
29	M21 EAE 703	DRAIN HOSE ASSEMBLY	1		
30	—	PIPE BED PLATE	1		DK00G769G01
31	—	LEAD ASSEMBLY	1		DM78C02UG02 (For DRAIN PUMP)
32	—	LEAD ASSEMBLY	1		DM78C02TG02 (For DRAIN SENSOR)
33	—	LEAD ASSEMBLY	1		DM78C02VG01 (For VANE MOTOR)
34	T2W EAT 441	WIFI-INTERFACE	1		

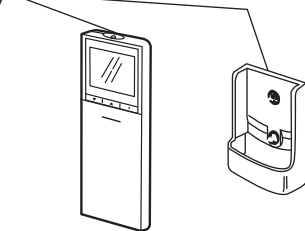
MLZ-KX06NL

1-2. INDOOR UNIT ELECTRICAL PARTS AND FUNCTIONAL PARTS



1-3. ACCESSORY AND REMOTE CONTROLLER

13 (Optional Parts 2-2.)



1-2. INDOOR UNIT ELECTRICAL PARTS AND FUNCTIONAL PARTS

1. The part quantity below indicates the required number of pieces per unit.

No.	Part No.	Part Name	MLZ-KX06NL- CA1	Symbol in Wiring Diagram	Remarks
1	M21 EA0 781	DISPLAY LEAD COVER	1		
2	T2W EAC 326	DISPLAY RECEIVER P.C.BOARD ASSEMBLY	1		
3	—	DISPLAY COVER	1		DY00C586G17
4	M21 EBD 375	TERMINAL BED	1	TB	
5	—	TB BASE	1		JQ25B367G03
6	M21 L9V 784	PB BOX	1		
7	T2W FT3 450	INDOOR CONTROLLER	1		
8	T2W EAK 313	FUSE VARISTOR SET	1	F11, NR11	
9	—	LEAD ASSEMBLY	1		DM78C02WG02 (For DISPLAY RECEIVER P.C.BOARD)
10	—	LEAD ASSEMBLY	1		DM78C02XG01 (For TERMINAL BED)
11	M21 EAH 307	ROOM TEMPERATURE THERMISTOR	1	RT11	
12	T2W EA4 334	REFRIGERANT SENSOR (R454B)	1		

1-3. ACCESSORY AND REMOTE CONTROLLER

1. The part quantity below indicates the required number of pieces per unit.

No.	Part No.	Part Name	MLZ-KX06NL- CA1	Symbol in Wiring Diagram	Remarks
13	—	REMOTE CONTROLLER	1		SH24Z MAC-FL117M-E Includes REMOTE CONTROLLER HOLDER

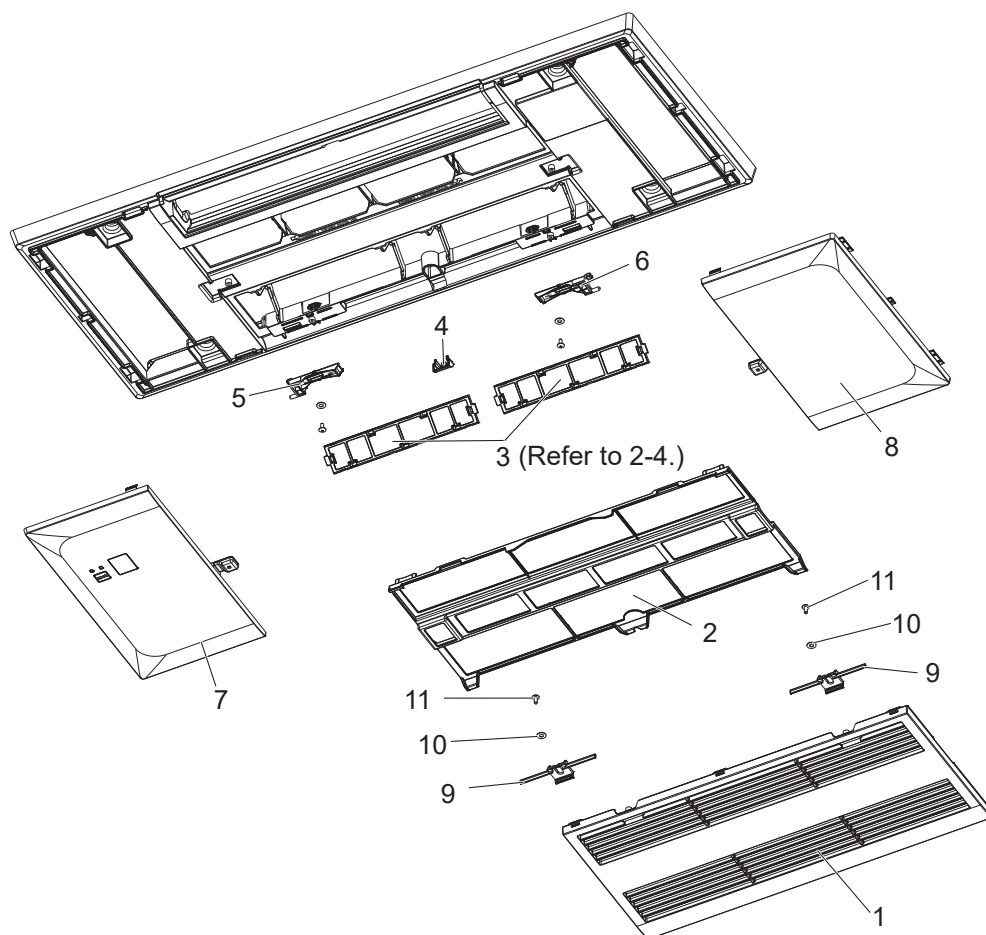
2

OPTIONAL PARTS

MLZ-KX06NL

2-1. GRILLE

MLP-448WCA: MLZ-KX06NL - CA1



1. The part quantity below indicates the required number of pieces per unit.

2. The circled No. indicates that the part is not shown in the figure.

No.	Part No.	Part Name	MLP-448WCA	Symbol in Wiring Diagram	Remarks
1	T2W EDR 010	GRILLE	1		
2	T2W EC7 100	FILTER	1		
3	—	AIR CLEANING FILTER (ANTI-ALLERGY ENZYME FILTER)	1		MAC-408FT-E
4	T2W EB0 067	SCREW CAP	1		
5	M21 EA0 054	GRILLE SHAFT L	1		
6	M21 EA1 054	GRILLE SHAFT R	1		
7	T2W EB1 975	SIDE PANEL L	1		
8	T2W EAE 975	SIDE PANEL R	1		
9	M21 EAC 049	GRILLE KONB(W)	2		
10	—	WASHER	2		Z006Z051H07
11	—	SCREW	2		Z004Z015H37
⑫	M21 EA9 250	SCREW SET	1		Fixing screws for M5 × 16 mm (6pcs) Self-tapping screws for 4 × 12 mm (1pc)

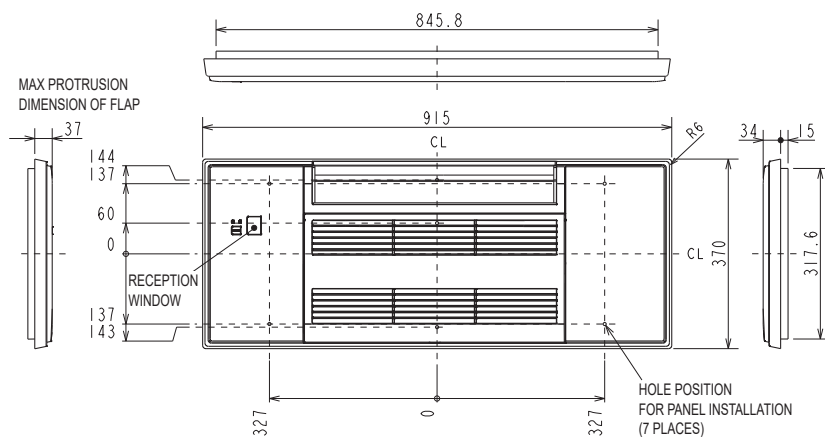
GRILLE: MLP-448WCA

Unit: inch

1. SPECIFICATION

ITEM		CONTENTS
EXTERIOR	COLOR(MUNSELL NO.)	WHITE(4.0GY 9.1/0.2)
	SURFACE TREATMENT	NONE
	MATERIAL	ABS RESIN
MASS		5.7 LBS.

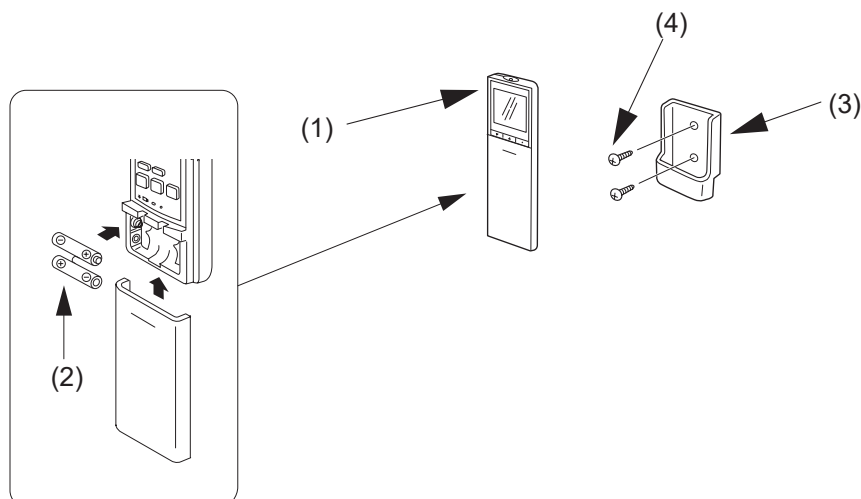
2. OUTLINE DRAWING



2-2. REMOTE CONTROLLER

Model	Part No.
	English
MLZ-KX06NL	MAC-FL117M-E

(1)	Wireless remote controller	1
(2)	Battery (AAA) for (1)	2
(3)	Remote controller holder	1
(4)	Screws for the remote controller holder (3) 3.5 × 16 mm (Black)	2

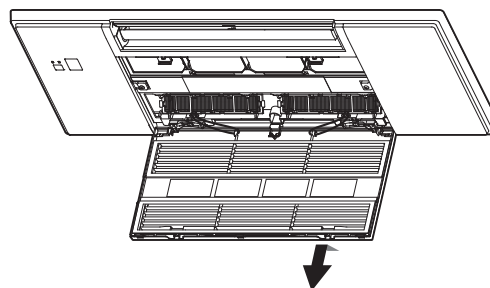


2-3. AIR FILTER (AIR PURIFYING FILTER)

- **Clean every 2 weeks**
- Remove dirt by a vacuum cleaner, or rinse with water.
- Dry it well in shade before installing it.
- Install the tabs into the intake grille hole.

NOTE:

- Clean the filters regularly for best performance and to reduce power consumption.
- Dirty filters cause condensation in the air conditioner which will contribute to the growth of fungi such as mold. It is therefore recommended to clean air filters every 2 weeks.



2-4. AIR CLEANING FILTER (ANTI-ALLERGY ENZYME FILTER, OPTION)

Back side of air filter

Clean every 3 months:

- Remove dirt by a vacuum cleaner.

When dirt cannot be removed by vacuum cleaning:

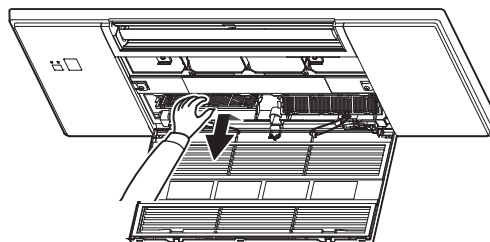
- Soak the filter and its frame in lukewarm water before rinsing it.
(Diluted mild detergents can be used when dirt cannot be removed.)
- After washing, dry it well in shade.

Every year:

- Replace it with a new air cleaning filter for best performance.

NOTE:

- Clean the filters regularly for best performance and to reduce power consumption.
- Dirty filters cause condensation in the air conditioner which will contribute to the growth of fungi such as mold.



ANTI-ALLERGY ENZYME FILTER

Model	Part No.
MLZ-KX06NL	MAC-408FT-E

MITSUBISHI ELECTRIC CORPORATION

HEAD OFFICE: TOKYO BUILDING, 2-7-3, MARUNOUCHI, CHIYODA-KU, TOKYO 100-8310, JAPAN