

Revision A:

- Indoor heat exchanger for MSZ-FD09/12NA have been changed.

OBB497 is void.

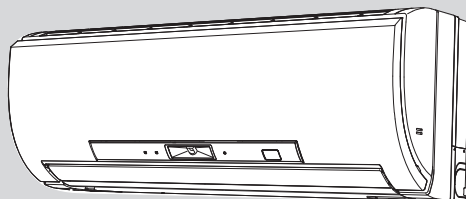
INDOOR UNIT

PARTS CATALOG

No. OBB497
REVISED EDITION-A

Models

MSZ-FD09NA
MSZ-FD12NA



CONTENTS

1. RoHS PARTS LIST..... 2

SERVICE MANUAL (OBH497)

NOTE:

RoHS compliant products have <G> mark on the spec name plate.

Mr. SLIM™

Revision A:

- Indoor heat exchanger for MSZ-FD09/12NA have been changed.

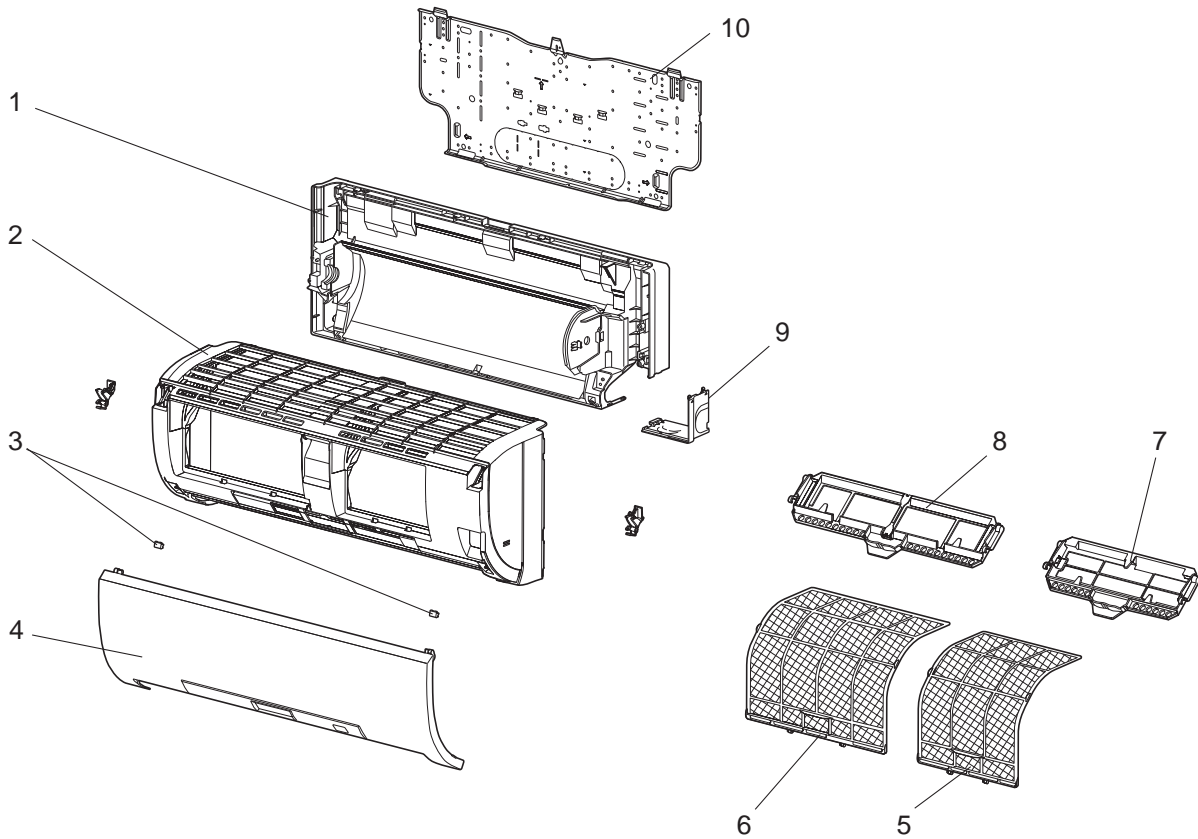
1

RoHS PARTS LIST

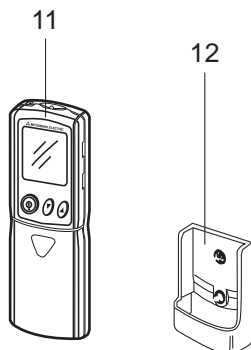
MSZ-FD09NA

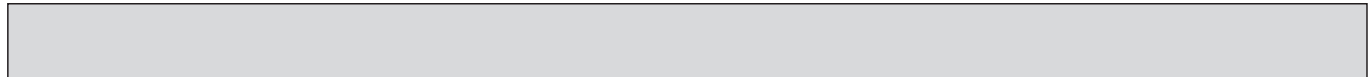
MSZ-FD12NA

1-1. INDOOR UNIT STRUCTURAL PARTS



1-2. ACCESSORY AND REMOTE CONTROLLER





1-1. INDOOR UNIT STRUCTURAL PARTS

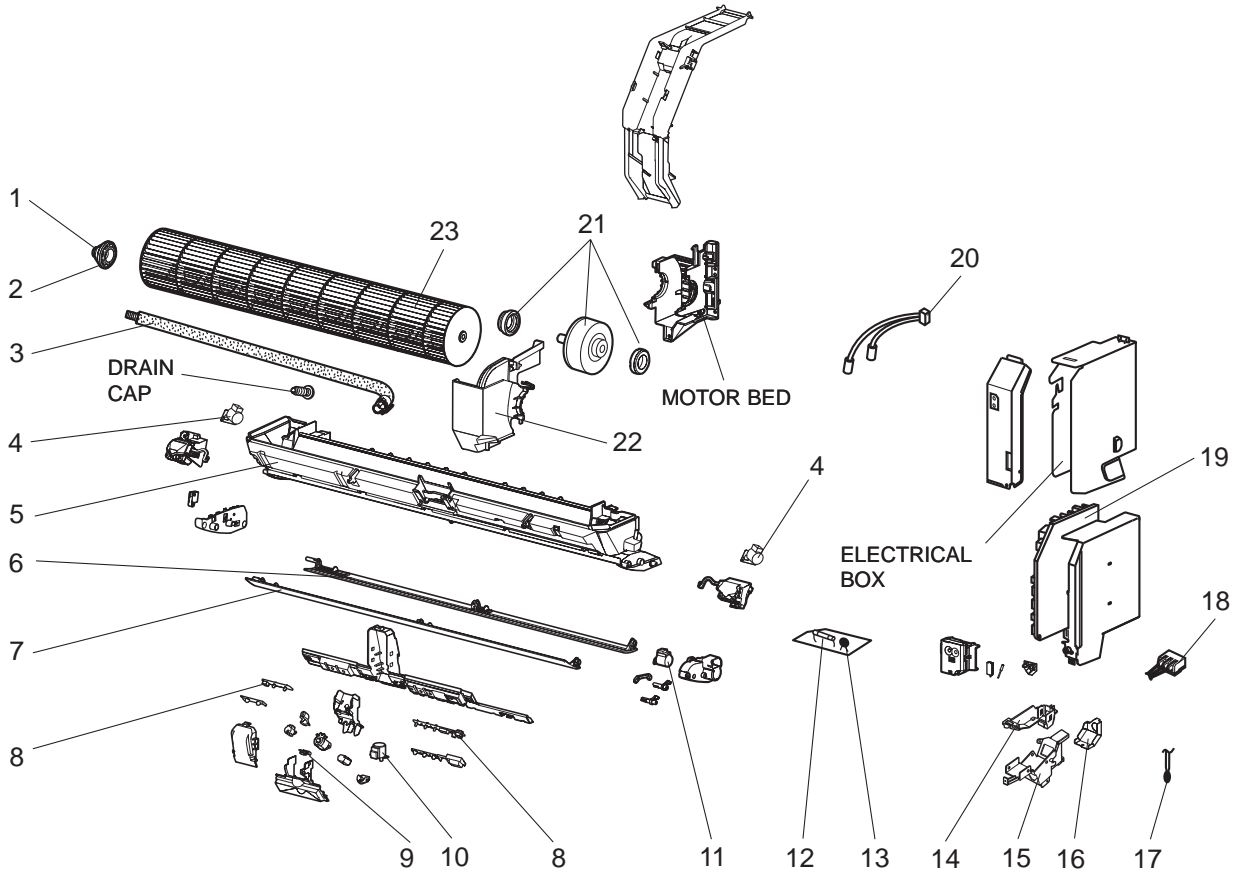
No.	RoHS	Part No.	Part name	Symbol in Wiring Diagram	Q'ty/unit		Remarks
					MSZ-		
					FD09NA	FD12NA	
1	G	E12 C32 234	BOX ASSEMBLY		1	1	
2	G	E12 C85 000	PANEL ASSEMBLY		1	1	Including No. 3,4
3	G	E12 913 067	SCREW CAP		2	2	2PCS/SET
4	G	E12 C85 010	FRONT PANEL		1	1	
5	G	E12 C85 100	AIR FILTER (RIGHT)		1	1	
6	G	E12 C86 100	AIR FILTER (LEFT)		1	1	
7	G	_____	ANTI-ALLERGY ENZYME FILTER		1	1	MAC-418FT-E
8	G	_____	PLATINUM DEODORIZING FILTER		1	1	MAC-308FT-E
9	G	E12 C32 975	CORNER BOX (RIGHT)		1	1	
10	G	E12 C32 970	INSTALLATION PLATE		1	1	

1-2. ACCESSORY AND REMOTE CONTROLLER

11	G	E12 C85 426	REMOTE CONTROLLER		1	1	KM08C
12	G	E12 527 083	REMOTE CONTROLLER HOLDER		1	1	

**MSZ-FD09NA
MSZ-FD12NA**

1-3. INDOOR UNIT ELECTRICAL PARTS AND FUNCTIONAL PARTS



1-3. INDOOR UNIT ELECTRICAL PARTS AND FUNCTIONAL PARTS

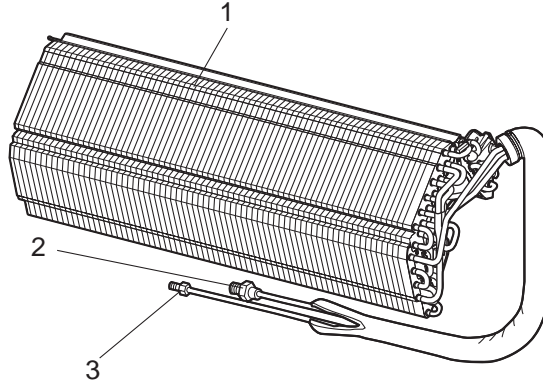
No.	ROHS	Part No.	Part name	Symbol in Wiring Diagram	Q'ty/unit		Remarks
					MSZ-		
					FD09NA	FD12NA	
1	G	E12 751 509	BEARING MOUNT		1	1	
2	G	E12 001 504	SLEEVE BEARING		1	1	
3	G	E12 897 702	DRAIN HOSE		1	1	
4	G	E12 C32 303	VANE MOTOR (VERTICAL)	MV2	2	2	RIGHT & LEFT
5	G	E12 C85 235	NOZZLE ASSEMBLY		1	1	
6	G	E12 C32 040	HORIZONTAL VANE (UPPER)		1	1	
7	G	E12 C32 041	HORIZONTAL VANE (LOWER)		1	1	
8	G	E12 C85 468	POWER MONITOR RECEIVER P.C. BOARD		1	1	
9	G	E12 C32 391	i-see Sensor	RR	1	1	
10	G	E12 A89 303	i-see Sensor MOTOR	MT	1	1	
11	G	E12 C33 303	VANE MOTOR (HORIZONTAL)	MV1	1	1	UP & DOWN
12	G	E12 A49 382	FUSE	F11	1	1	T3.15AL250V
13	G	E12 A43 385	VARISTOR	NR11	1	1	
14	G	E12 C30 779	TERMINAL BLOCK HOLDER		1	1	
15	G	E12 C30 780	TERMINAL BLOCK COVER		1	1	
16	G	E12 C30 979	CONDUIT COVER		1	1	
17	G	E12 C32 308	ROOM TEMPERATURE THERMISTOR	RT11	1	1	
18	G	E12 913 375	TERMINAL BLOCK	TB	1	1	
19	G	E12 C85 452	ELECTRONIC CONTROL P.C. BOARD ※1		1		
	G	E12 C86 452	ELECTRONIC CONTROL P.C. BOARD ※1			1	
20	G	E12 C32 307	INDOOR COIL THERMISTOR	RT12,RT13	1	1	
21	G	E12 C85 300	INDOOR FAN MOTOR ※2	MF	1	1	RC0J40- <input type="checkbox"/> <input type="checkbox"/>
22	G	E12 C32 333	MOTOR BAND		1	1	
23	G	E12 C32 302	LINE FLOW FAN		1	1	

※1 Including SW P.C. BOARD

※2 Including FAN MOTOR RUBBER MOUNT (2 PCS/SET)

MSZ-FD09NA
MSZ-FD12NA

1-4. INDOOR UNIT HEAT EXCHANGER



No.	RoHS	Part No.	Part name	Symbol in Wiring Diagram	Q'ty/unit		Remarks
					MSZ-		
					FD09NA	FD12NA	
1	G	E12 38E 620	INDOOR HEAT EXCHANGER		1	1	
2	G	E12 815 666	UNION (GAS)		1	1	ø9.52
3	G	E12 C32 667	UNION (LIQUID)		1	1	ø6.35

Mr. SLIM™

 **MITSUBISHI ELECTRIC CORPORATION**
HEAD OFFICE: TOKYO BUILDING, 2-7-3, MARUNOUCHI, CHIYODA-KU, TOKYO 100-8310, JAPAN

© Copyright 2008 MITSUBISHI ELECTRIC CO.,LTD
Issued: Mar. 2018. No. OBB497 REVISED EDITION-A
Published: Jan. 2008. No. OBB497 7
Made in Japan

Specifications subject to change without notice.