

INDOOR UNIT

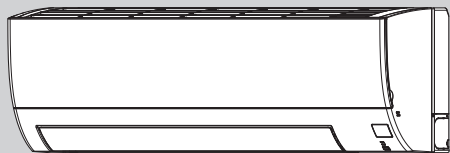
No. OBB965
 REVISED EDITION-B

PARTS CATALOG

Models

MSZ-HX09NL - [CA1]
MSZ-HX12NL - [CA1]
MSZ-HX15NL - [CA1]
MSZ-HX18NL - [CA1]
MSZ-HX24NL - [CA1]

MSZ-HX09NL2 - [CA1]
MSZ-HX12NL2 - [CA1]
MSZ-HX15NL2 - [CA1]
MSZ-HX18NL2 - [CA1]
MSZ-HX24NL2 - [CA1]



CONTENTS

1. SERVICE PARTS LIST 2
2. OPTIONAL PARTS 12

SERVICE MANUAL (OBH965)

MSZ-HX18NL MSZ-HX18NL2
MSZ-HX24NL MSZ-HX24NL2

Revision A:

• MSZ-HX09/12/15NL-[CA1] have been added.

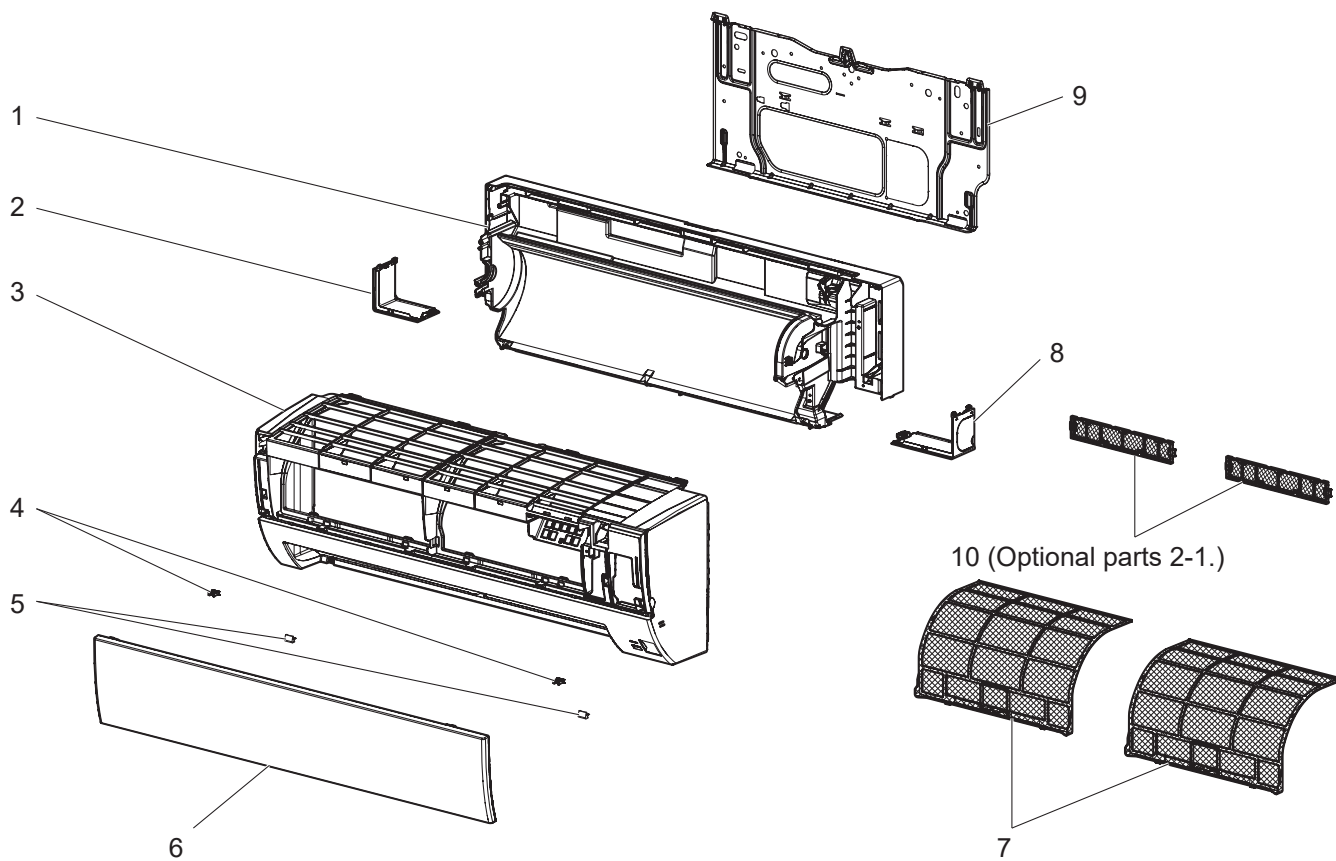
Revision B:

• MSZ-HX09/12/15/18/24NL2-[CA1] have been added.

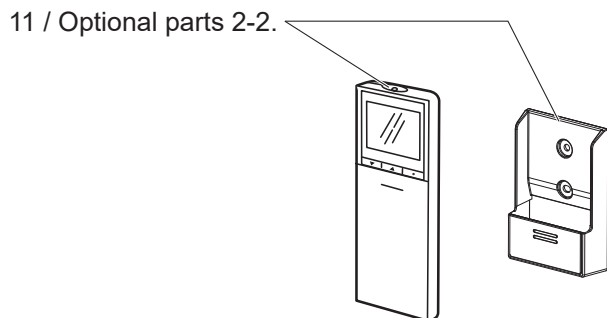
1 SERVICE PARTS LIST

**MSZ-HX09NL MSZ-HX12NL MSZ-HX15NL
MSZ-HX09NL2 MSZ-HX12NL2 MSZ-HX15NL2**

1-1. INDOOR UNIT STRUCTURAL PARTS



1-2. ACCESSORY AND REMOTE CONTROLLER



1-1. INDOOR UNIT STRUCTURAL PARTS

1. The part quantity below indicates the required number of pieces per unit.

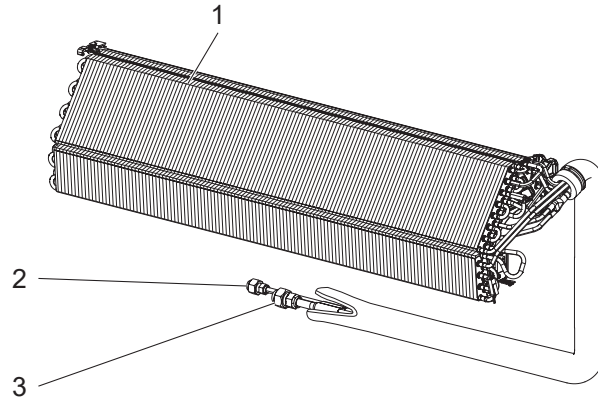
No.	Part No.	Part Name							Symbol in Wiring Diagram	Remarks
			MSZ-HX09NL - [CAT]	MSZ-HX12NL - [CAT]	MSZ-HX15NL - [CAT]	MSZ-HX09NL2 - [CAT]	MSZ-HX12NL2 - [CAT]	MSZ-HX15NL2 - [CAT]		
1	U01 A07 234	BOX ASSEMBLY	1	1	1	1	1	1		Not including LABELS
2	U01 A04 975	CORNER BOX (LEFT)	1	1	1	1	1	1		
3	U01 A42 000	PANEL ASSEMBLY	1							Includes No. 4, 5 and 6
3	U01 A43 000	PANEL ASSEMBLY		1						Includes No. 4, 5 and 6
3	U01 A44 000	PANEL ASSEMBLY			1					Includes No. 4, 5 and 6
3	U01 A45 000	PANEL ASSEMBLY				1				
3	U01 A46 000	PANEL ASSEMBLY					1			
3	U01 A47 000	PANEL ASSEMBLY						1		
4	U01 A02 142	CATCH	2	2	2	2	2	2		2 PCS/SET
5	U01 003 087	SCREW CAP	2	2	2	2	2	2		2 PCS/SET
6	U01 A10 010	FRONT PANEL	1	1	1	1	1	1		Not including LABELS
7	U01 A04 100	AIR FILTER (V AIR FILTER)	2	2	2	2	2	2		1 PC/SET
8	U01 A03 975	CORNER BOX (RIGHT)	1	1	1	1	1	1		
9	U01 A05 970	INSTALLATION PLATE	1	1	1	1	1	1		
10	—	AIR CLEANING FILTER (ELECTROSTATIC ANTI-ALLERGY ENZYME FILTER / MICROPARTICLE CATCHING FILTER)	2	2	2	2	2	2		2 PCS/SET MAC-2320FT / MAC-EMF515FT-E

1-2. ACCESSORY AND REMOTE CONTROLLER

1. The part quantity below indicates the required number of pieces per unit.

No.	Part No.	Part Name							Symbol in Wiring Diagram	Remarks
			MSZ-HX09NL - [CAT]	MSZ-HX12NL - [CAT]	MSZ-HX15NL - [CAT]	MSZ-HX09NL2 - [CAT]	MSZ-HX12NL2 - [CAT]	MSZ-HX15NL2 - [CAT]		
11	—	REMOTE CONTROLLER	1	1	1					Refer to 2. OPTIONAL PARTS.
11	—	REMOTE CONTROLLER				1	1	1		Refer to 2. OPTIONAL PARTS.
11	U01 A30 426	REMOTE CONTROLLER				1	1	1		SH24M (English)

MSZ-HX09NL MSZ-HX12NL MSZ-HX15NL
MSZ-HX09NL2 MSZ-HX12NL2 MSZ-HX15NL2
1-3. INDOOR UNIT HEAT EXCHANGER



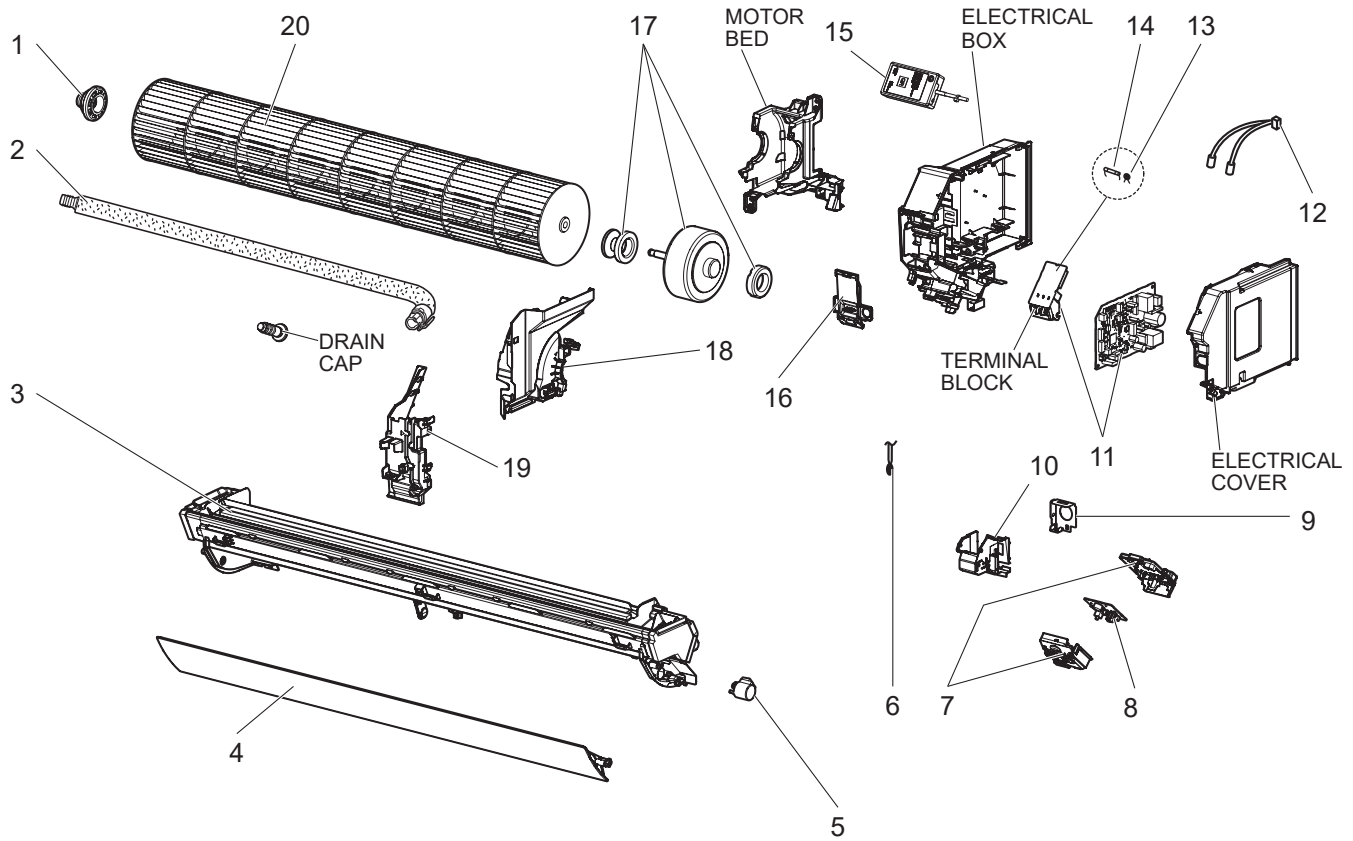
1-3. INDOOR UNIT HEAT EXCHANGER

1. The part quantity below indicates the required number of pieces per unit.

No.	Part No.	Part Name							Symbol in Wiring Diagram	Remarks
			MSZ-HX09NL - [CAT]	MSZ-HX12NL - [CAT]	MSZ-HX15NL - [CAT]	MSZ-HX09NL2 - [CAT]	MSZ-HX12NL2 - [CAT]	MSZ-HX15NL2 - [CAT]		
1	U01 A14 620	INDOOR HEAT EXCHANGER	1	1		1	1			
1	U01 A15 620	INDOOR HEAT EXCHANGER			1			1		
2	U01 A01 667	UNION LIQUID	1	1	1	1	1	1	ø1/4 (ø6.35)	
3	U01 A01 666	UNION GAS	1	1		1	1		ø3/8 (ø9.52)	
3	U01 A02 666	UNION GAS			1			1	ø1/2 (ø12.7)	

**MSZ-HX09NL MSZ-HX12NL MSZ-HX15NL
MSZ-HX09NL2 MSZ-HX12NL2 MSZ-HX15NL2**

1-4. INDOOR UNIT ELECTRICAL PARTS AND FUNCTIONAL PARTS



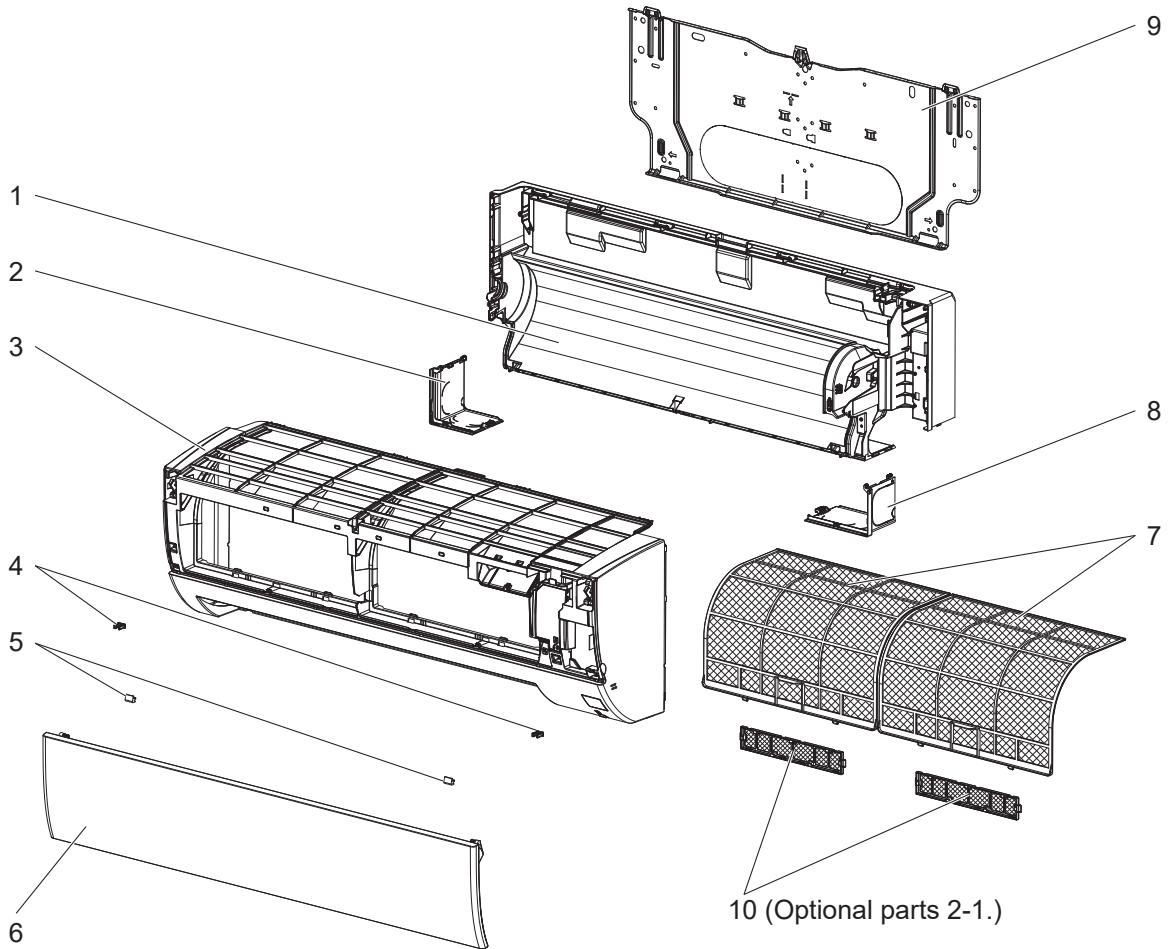
1-4. INDOOR UNIT ELECTRICAL PARTS AND FUNCTIONAL PARTS

1. The part quantity below indicates the required number of pieces per unit.

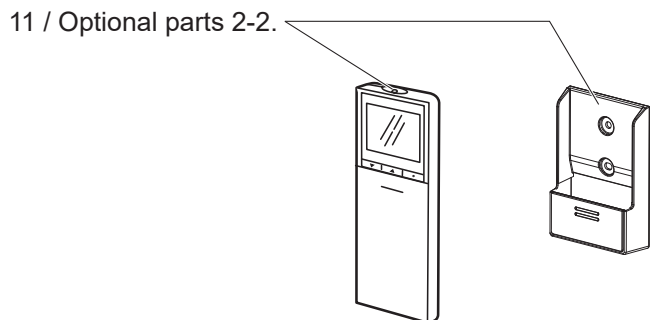
2. The circled No. indicates that the part is not shown in the figure.

No.	Part No.	Part Name	MSZ-HX09NL - [CAT]	MSZ-HX12NL - [CAT]	MSZ-HX15NL - [CAT]	MSZ-HX09NL2 - [CAT]	MSZ-HX12NL2 - [CAT]	MSZ-HX15NL2 - [CAT]	Symbol in Wiring Diagram	Remarks
1	U01 A02 510	BEARING MOUNT ASSEMBLY	1	1	1	1	1	1		
2	U01 A01 702	DRAIN HOSE	1	1	1	1	1	1		
3	U01 A06 235	NOZZLE ASSEMBLY	1	1	1	1	1	1		Full assembly except DRAIN HOSE
4	U01 A02 042	HORIZONTAL VANE	1	1	1	1	1	1		
5	U01 A01 303	VANE MOTOR (HORIZONTAL)	1	1	1	1	1	1	MV	
6	U01 A12 308	ROOM TEMPERATURE THERMISTOR	1	1	1	1	1	1	RT11	
7	U01 002 089	POWER MONITOR RECIEVER SW P.C. BOARD HOLDER	1	1	1	1	1	1		
8	U01 A05 440	POWER MONITOR RECIEVER SW P.C. BOARD	1	1	1	1	1	1		
9	U01 A06 978	CONDUIT PLATE	1	1	1	1	1	1		
10	U01 A05 979	CONDUIT COVER	1	1	1	1	1	1		
11	U01 A79 452	ELECTRONIC CONTROL P.C. BOARD	1							
11	U01 A80 452	ELECTRONIC CONTROL P.C. BOARD		1						
11	U01 A81 452	ELECTRONIC CONTROL P.C. BOARD			1					
11	U01 B06 452	ELECTRONIC CONTROL P.C. BOARD				1				
11	U01 B07 452	ELECTRONIC CONTROL P.C. BOARD					1			
11	U01 B08 452	ELECTRONIC CONTROL P.C. BOARD						1		
12	U01 A10 307	INDOOR COIL THERMISTOR	1	1	1	1	1	1	RT12, RT13	
13	U01 A01 385	VARISTOR	1	1	1	1	1	1	NR11	
14	U01 A03 381	FUSE	1	1	1	1	1	1	F11	T3.15AL250V
15	U01 005 937	WI-FI INTERFACE ASSEMBLY				1	1	1		
16	U01 A04 784	V.A. CLAMP	1	1	1	1	1	1		
17	U01 A06 300	INDOOR FAN MOTOR	1	1	1	1	1	1	MF	RC0J30-□□, Includes FAN MOTOR RUBBER MOUNT (2 PCS/SET)
18	U01 A05 333	MOTOR BAND	1	1	1	1	1	1		
19	U01 A03 690	WATER COVER	1	1	1	1	1	1		
20	U01 A05 302	LINE FLOW FAN	1	1	1	1	1	1		
⑳	U01 A11 392	LEAD ASSEMBLY	1	1	1					
㉑	U01 A25 392	LEAD ASSEMBLY				1	1	1		

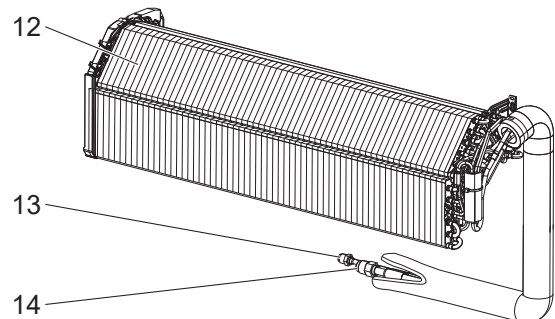
**MSZ-HX18NL MSZ-HX24NL
MSZ-HX18NL2 MSZ-HX24NL2
1-5. INDOOR UNIT STRUCTURAL PARTS**



1-6. ACCESSORY AND REMOTE CONTROLLER



1-7. INDOOR UNIT HEAT EXCHANGER



1-5. INDOOR UNIT STRUCTURAL PARTS

1. The part quantity below indicates the required number of pieces per unit.

No.	Part No.	Part Name					Symbol in Wiring Diagram	Remarks
			MSZ-HX18NL - [CAT]	MSZ-HX24NL - [CAT]	MSZ-HX18NL2 - [CAT]	MSZ-HX24NL2 - [CAT]		
1	E22 44C 234	BOX ASSEMBLY	1	1	1	1		Not including LABELS
2	E22 98B 976	CORNER BOX LEFT	1	1	1	1		
3	E22 1K5 000	PANEL ASSEMBLY	1					Includes No. 4 and 6
3	E22 1K6 000	PANEL ASSEMBLY		1				Includes No. 4 and 6
3	E22 AN9 000	PANEL ASSEMBLY			1			
3	E22 AP0 000	PANEL ASSEMBLY				1		
4	E22 F95 142	CATCH	2	2	2	2		2 PCS/SET
5	E22 98B 067	SCREW CAP	2	2	2	2		2 PCS/SET
6	E22 8H1 010	FRONT PANEL	1	1	1	1		Not including LABELS
7	E22 1C7 100	AIR FILTER (V AIR FILTER)	2	2	2	2		1 PC/SET
8	E22 98B 975	CORNER BOX RIGHT	1	1	1	1		
9	E22 N87 970	INSTALLATION PLATE	1	1	1	1		
10	—	AIR CLEANING FILTER (ELECTROSTATIC ANTI-ALLERGY ENZYME FILTER / MICROPARTICLE CATCHING FILTER)	2	2	2	2		2 PCS/SET MAC-2320FT / MAC-EMF515FT-E

1-6. ACCESSORY AND REMOTE CONTROLLER

1. The part quantity below indicates the required number of pieces per unit.

No.	Part No.	Part Name					Symbol in Wiring Diagram	Remarks
			MSZ-HX18NL - [CAT]	MSZ-HX24NL - [CAT]	MSZ-HX18NL2 - [CAT]	MSZ-HX24NL2 - [CAT]		
11	—	REMOTE CONTROLLER	1	1				Refer to 2. OPTIONAL PARTS.
11	—	REMOTE CONTROLLER			1	1		Refer to 2. OPTIONAL PARTS.
11	E22 8H1 426	REMOTE CONTROLLER			1	1		SH24M (English)

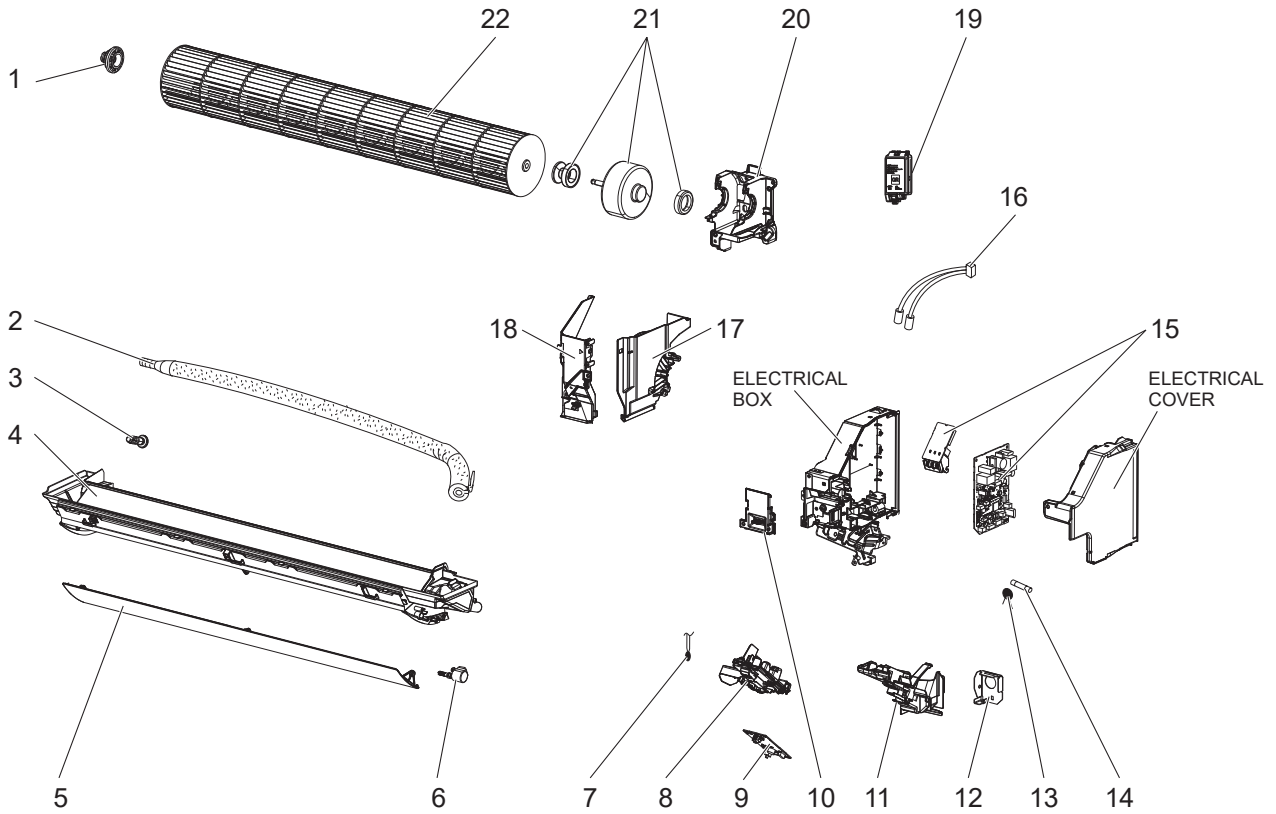
1-7. INDOOR UNIT HEAT EXCHANGER

1. The part quantity below indicates the required number of pieces per unit.

No.	Part No.	Part Name					Symbol in Wiring Diagram	Remarks
			MSZ-HX18NL - [CAT]	MSZ-HX24NL - [CAT]	MSZ-HX18NL2 - [CAT]	MSZ-HX24NL2 - [CAT]		
12	E22 8H1 620	INDOOR HEAT EXCHANGER	1	1				
12	E22 AU0 620	INDOOR HEAT EXCHANGER			1	1		
13	E22 151 667	UNION (LIQUID)	1	1				ø1/4 (ø6.35)
14	E22 179 667	UNION (GAS)	1	1				ø1/2 (ø12.7)

MSZ-HX18NL MSZ-HX24NL
MSZ-HX18NL2 MSZ-HX24NL2

1-8. INDOOR UNIT ELECTRICAL PARTS AND FUNCTIONAL PARTS



1-8. INDOOR UNIT ELECTRICAL PARTS AND FUNCTIONAL PARTS

1. The part quantity below indicates the required number of pieces per unit.

No.	Part No.	Part Name	MSZ-HX18NL - [CAT]	MSZ-HX24NL - [CAT]	MSZ-HX18NL2 - [CAT]	MSZ-HX24NL2 - [CAT]	Symbol in Wiring Diagram	Remarks
1	E22 A89 509	BEARING MOUNT ASSEMBLY	1	1	1	1		Includes SLEEVE BEARING
2	E22 P72 702	DRAIN HOSE	1	1	1	1		
3	E27 42R 705	DRAIN CAP	1	1	1	1		
4	E22 8H1 235	NOZZLE ASSEMBLY	1	1	1	1		Full assembly except DRAIN HOSE
5	E22 42K 040	HORIZONTAL VANE	1	1	1	1		
6	E22 N87 303	VANE MOTOR (HORIZONTAL)	1	1	1	1	MV	UP & DOWN
7	E22 8H1 308	ROOM TEMPERATURE THERMISTOR	1	1	1	1	RT11	
8	E22 8H1 095	POWER MONITOR RECEIVER HOLDER	1	1	1	1		
9	E22 8H1 468	POWER MONITOR RECEIVER SW P.C. BOARD	1	1	1	1		
10	E22 N87 784	V.A. CLAMP	1	1	1	1		
11	E22 N94 979	CONDUIT COVER	1	1	1	1		
12	E22 N94 978	CONDUIT PLATE	1	1	1	1		
13	E22 K90 385	VARISTOR	1	1	1	1	NR11	
14	E22 C67 382	FUSE	1	1	1	1	F11	T3.15AL250V
15	E22 8H1 452	ELECTRONIC CONTROL P.C. BOARD	1					Includes TERMINAL P.C. BOARD with TB
15	E22 8H2 452	ELECTRONIC CONTROL P.C. BOARD		1				Includes TERMINAL P.C. BOARD with TB
15	E22 AU0 452	ELECTRONIC CONTROL P.C. BOARD			1			Includes TERMINAL P.C. BOARD with TB
15	E22 AU1 452	ELECTRONIC CONTROL P.C. BOARD				1		Includes TERMINAL P.C. BOARD with TB
16	E22 8H1 307	INDOOR COIL THERMISTOR	1	1			RT12, RT13	Combined type
16	E22 AU0 307	INDOOR COIL THERMISTOR			1	1	RT12, RT13	Combined type
17	E22 N87 333	MOTOR BAND	1	1	1	1		
17	E22 N87 541	WATER COVER	1	1				
18	E22 AU0 541	WATER COVER			1	1		
19	E22 AU0 457	WI-FI INTERFACE ASSEMBLY			1	1		
20	E22 18A 333	MOTOR BED	1	1	1	1		
21	E22 8H1 300	INDOOR FAN MOTOR	1	1	1	1	MF	RC0J40-□□, Includes FAN MOTOR RUBBER MOUNT (2 PCS/ SET)
22	E22 17A 302	LINE FLOW FAN	1	1	1	1		

2-1. AIR CLEANING FILTER (ELECTROSTATIC ANTI-ALLERGY ENZYME FILTER)

Every 3 months:

- Remove dirt by a vacuum cleaner.

When dirt cannot be removed by vacuum cleaning:

- Soak the filter and its frame in lukewarm water before rinsing it.
- After washing, dry it well in shade.

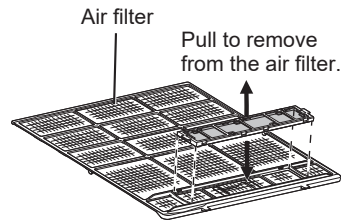
Every year:

- Replace it with a new air cleaning filter for best performance.

NOTE 1: Clean the filters regularly for best performance and to reduce power consumption.

NOTE 2: Dirty filters cause condensation in the air conditioner which will contribute to the growth of fungi such as mold. It is therefore recommended to clean air filters every 2 weeks.

Model		Part No.
MSZ-HX09NL	MSZ-HX09NL2	MAC-2320FT
MSZ-HX12NL	MSZ-HX12NL2	
MSZ-HX15NL	MSZ-HX15NL2	
MSZ-HX18NL	MSZ-HX18NL2	
MSZ-HX24NL	MSZ-HX24NL2	



Attach to the air filter.

(MICROPARTICLE CATCHING FILTER)

Removes the microparticles from the air by means of static electricity.

Back side of air filter

Clean every 3 months:

- Remove dirt by a vacuum cleaner.
- Put it back to its original position, and install all tabs of the air cleaning filter.
- Do not wash it with water. Replace it with a new air cleaning filter when tobacco tar or oil stains adhere to it.

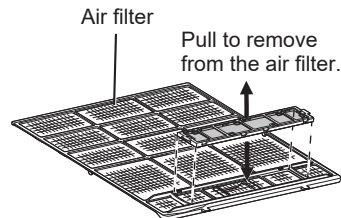
Every 3 year:

- Replace it with a new air cleaning filter for best performance.

NOTE 1: Clean the filters regularly for best performance and to reduce power consumption.

NOTE 2: Dirty filters cause condensation in the air conditioner which will contribute to the growth of fungi such as mold. It is therefore recommended to clean air filters every 2 weeks.

Model		Part No.
MSZ-HX09NL	MSZ-HX09NL2	MAC-EMF515FT-E
MSZ-HX12NL	MSZ-HX12NL2	
MSZ-HX15NL	MSZ-HX15NL2	
MSZ-HX18NL	MSZ-HX18NL2	
MSZ-HX24NL	MSZ-HX24NL2	

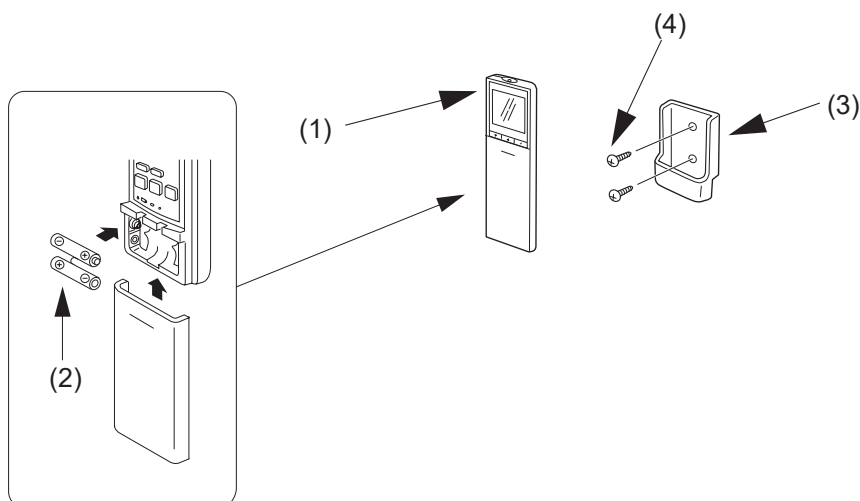


Attach to the air filter.

2-2. REMOTE CONTROLLER

Model	Part No.	
	English	French
MSZ-HX09NL MSZ-HX12NL MSZ-HX15NL MSZ-HX18NL MSZ-HX24NL	SH24M MAC-FL115M-E	SH24AG MAC-FL215M-E
MSZ-HX09NL2 MSZ-HX12NL2 MSZ-HX15NL2 MSZ-HX18NL2 MSZ-HX24NL2	—	

No.	Part Name	Quantity
(1)	Wireless remote controller	1
(2)	Battery (AAA) for (1)	2
(3)	Remote controller holder	1
(4)	Screws for the remote controller holder (3) 3.5 × 16 mm (Black)	2



MITSUBISHI ELECTRIC CORPORATION

HEAD OFFICE: TOKYO BUILDING, 2-7-3, MARUNOUCHI, CHIYODA-KU, TOKYO 100-8310, JAPAN

© Copyright 2025 MITSUBISHI ELECTRIC CORPORATION
 Issued: Apr. 2026. No. OBB965 REVISED EDITION-B
 Issued: May 2025. No. OBB965 REVISED EDITION-A
 Published: Feb. 2025. No. OBB965
 Made in Japan

Specifications are subject to change without notice.