



SPLIT-TYPE AIR CONDITIONERS

INDOOR UNIT

No. OBB970

PARTS CATALOG

Models

MSZ-JX09WL - CA1

MSZ-JX12WL - CA1



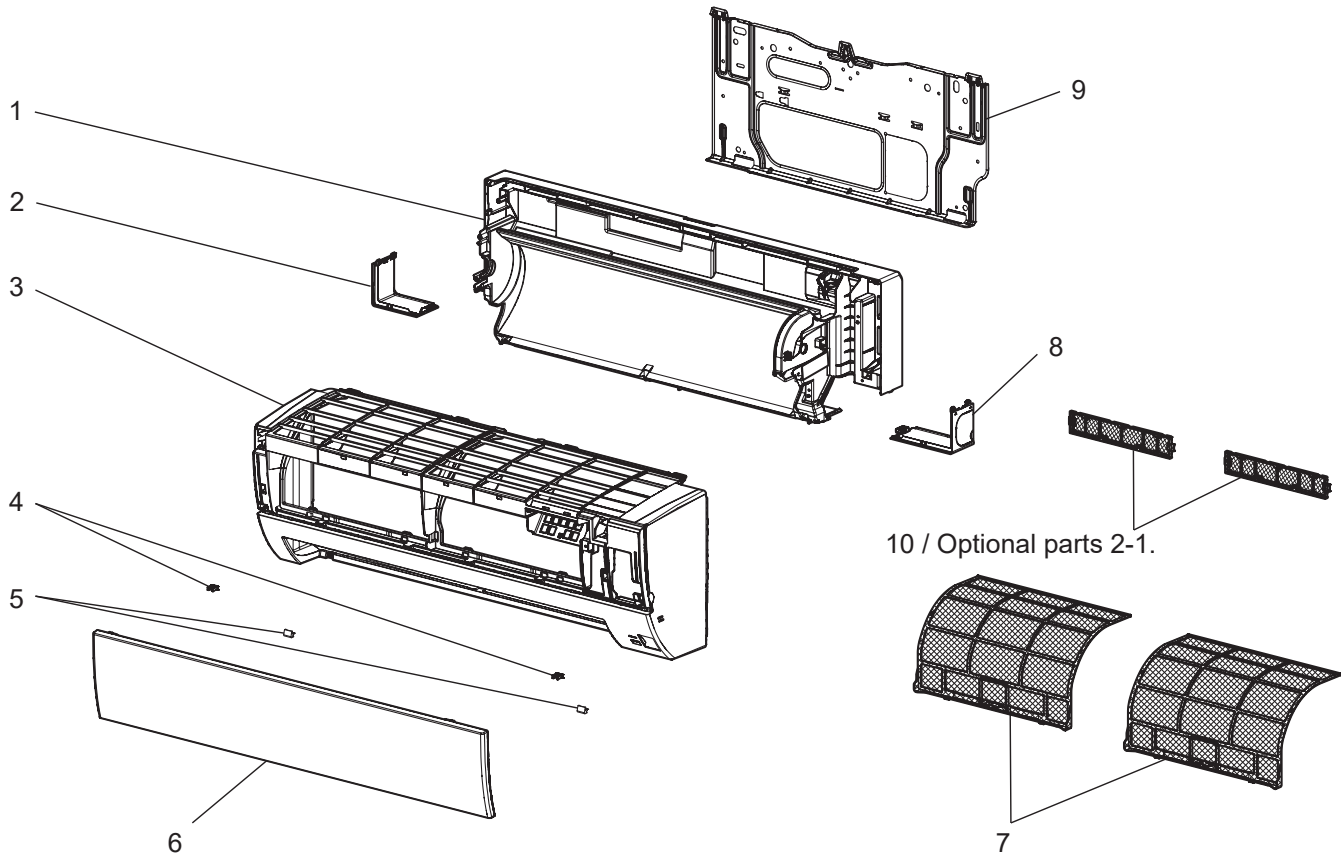
CONTENTS

- 1. SERVICE PARTS LIST 2
- 2. OPTIONAL PARTS 7

SERVICE MANUAL (OBH970)

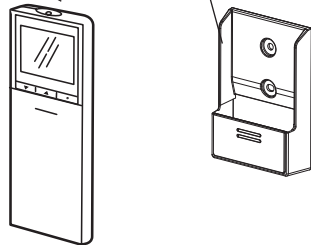
MSZ-JX09WL MSZ-JX12WL

1-1. INDOOR UNIT STRUCTURAL PARTS

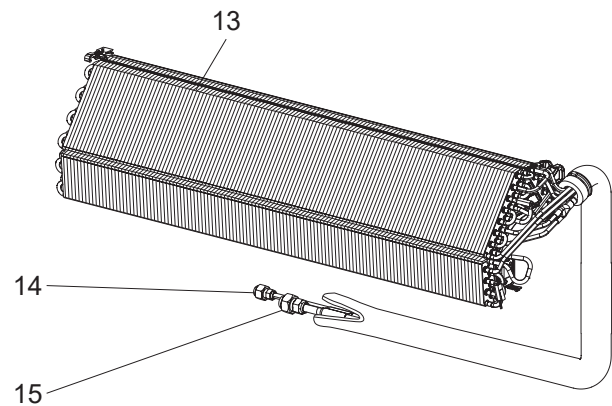


1-2. ACCESSORY AND REMOTE CONTROLLER

11 (Optional parts 2-2.)



1-3. INDOOR UNIT HEAT EXCHANGER



1-1. INDOOR UNIT STRUCTURAL PARTS

1. The part quantity below indicates the required number of pieces per unit.

No.	Part No.	Part Name	MSZ-JX09WL - [CA1]	MSZ-JX12WL - [CA1]	Symbol in Wiring Diagram	Remarks
1	U01 A07 234	BOX ASSEMBLY	1	1		Not including LABELS
2	U01 A04 975	CORNER BOX (LEFT)	1	1		
3	U01 A40 000	PANEL ASSEMBLY	1			Includes No. 4, 5 and 6
3	U01 A41 000	PANEL ASSEMBLY		1		Includes No. 4, 5 and 6
4	U01 A02 142	CATCH	2	2		2 PCS/SET
5	U01 003 087	SCREW CAP	2	2		2 PCS/SET
6	U01 A10 010	FRONT PANEL	1	1		Not including LABELS
7	U01 A03 100	AIR FILTER (V AIR FILTER)	2	2		1 PC/SET
8	U01 A02 975	CORNER BOX (RIGHT)	1	1		
9	U01 A05 970	INSTALLATION PLATE	1	1		
10	—	AIR CLEANING FILTER (ELECTROSTATIC ANTI-ALLERGY ENZYME FILTER)	2	2		2 PCS/SET MAC-2320FT

1-2. ACCESSORY AND REMOTE CONTROLLER

1. The part quantity below indicates the required number of pieces per unit.

No.	Part No.	Part Name	MSZ-JX09WL - [CA1]	MSZ-JX12WL - [CA1]	Symbol in Wiring Diagram	Remarks
11	—	REMOTE CONTROLLER	1	1		SH24M MAC-FL115M-E Includes REMOTE CONTROLLER HOLDER

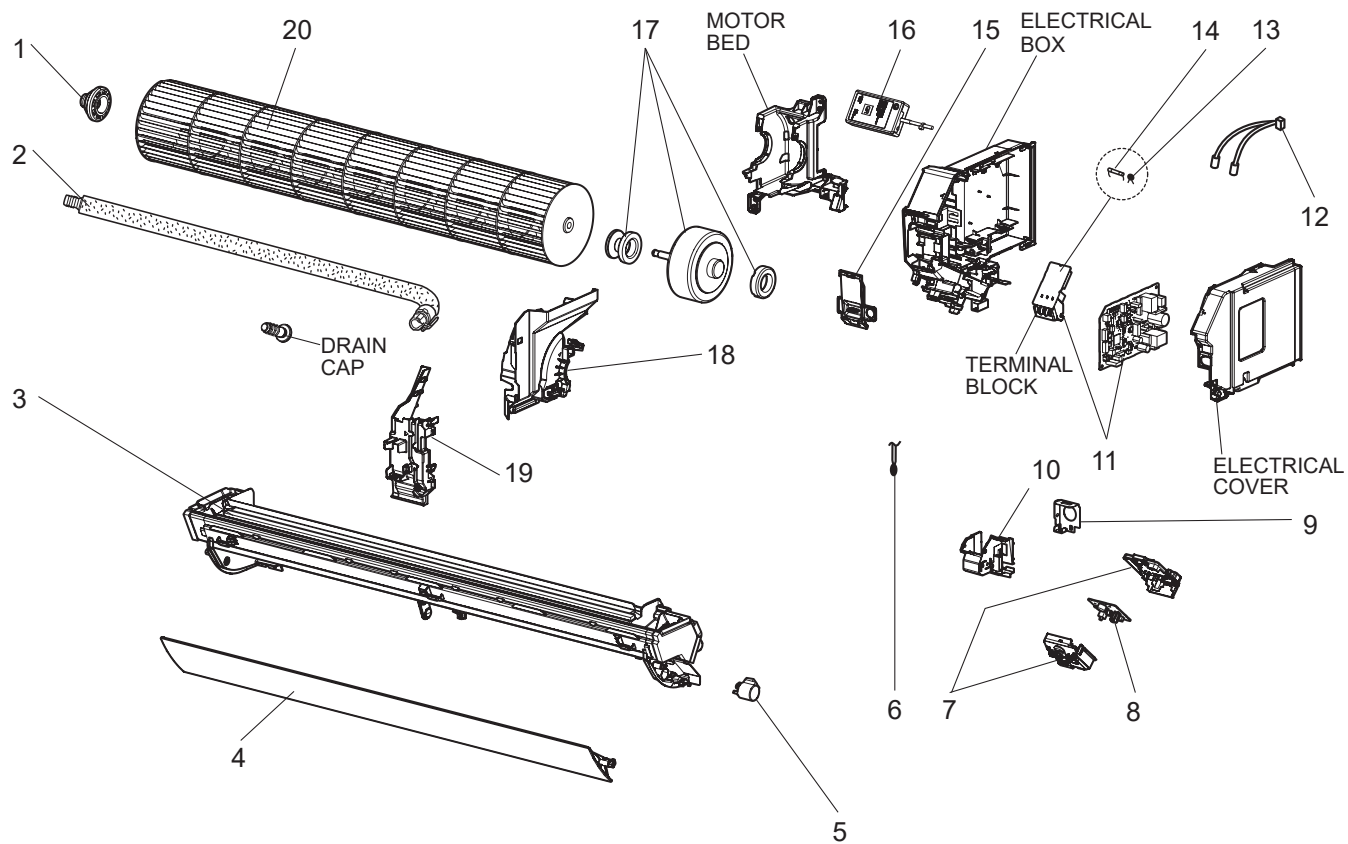
1-3. INDOOR UNIT HEAT EXCHANGER

1. The part quantity below indicates the required number of pieces per unit.

No.	Part No.	Part Name	MSZ-JX09WL - [CA1]	MSZ-JX12WL - [CA1]	Symbol in Wiring Diagram	Remarks
13	U01 A14 620	INDOOR HEAT EXCHANGER	1	1		
14	U01 A01 667	UNION LIQUID	1	1		ø1/4 (ø6.35)
15	U01 A01 666	UNION GAS	1	1		ø3/8 (ø9.52)

MSZ-JX09WL MSZ-JX12WL

1-4. INDOOR UNIT ELECTRICAL PARTS AND FUNCTIONAL PARTS



1-4. INDOOR UNIT ELECTRICAL PARTS AND FUNCTIONAL PARTS

1. The part quantity below indicates the required number of pieces per unit.

2. The circled No. indicates that the part is not shown in the figure.

No.	Part No.	Part Name	MSZ-JX09WL - CA1	MSZ-JX12WL - CA1	Symbol in Wiring Diagram	Remarks
1	U01 A02 510	BEARING MOUNT ASSEMBLY	1	1		
2	U01 A01 702	DRAIN HOSE	1	1		
3	U01 A06 235	NOZZLE ASSEMBLY	1	1		Full assembly except DRAIN HOSE
4	U01 A02 042	HORIZONTAL VANE	1	1		
5	U01 A01 303	VANE MOTOR (HORIZONTAL)	1	1	MV	
6	U01 A12 308	ROOM TEMPERATURE THERMISTOR	1	1	RT11	
7	U01 002 089	POWER MONITOR RECIEVER SW P.C. BOARD HOLDER	1	1		
8	U01 A05 440	POWER MONITOR RECIEVER SW P.C. BOARD	1	1		
9	U01 A07 978	CONDUIT PLATE	1	1		
10	U01 A05 979	CONDUIT COVER	1	1		
11	U01 A85 452	ELECTRONIC CONTROL P.C. BOARD	1			
11	U01 A86 452	ELECTRONIC CONTROL P.C. BOARD		1		
12	U01 A10 307	INDOOR COIL THERMISTOR	1	1	RT12, RT13	
13	U01 A02 385	VARISTOR	1	1	NR11	
14	U01 A03 381	FUSE	1	1	F11	T3.15AL250V
15	U01 A04 784	V.A. CLAMP	1	1		
16	U01 003 937	WIRELESS LAN MODULE	1	1		
17	U01 A07 300	INDOOR FAN MOTOR	1	1	MF	RC0H30-□□, Includes FAN MOTOR RUBBER MOUNT (2 PCS/SET)
18	U01 A05 333	MOTOR BAND	1	1		
19	U01 A03 690	WATER COVER	1	1		
20	U01 A05 302	LINE FLOW FAN	1	1		
(21)	U01 A11 392	LEAD ASSEMBLY	1	1		

1-5. AIR CLEANING FILTER (ELECTROSTATIC ANTI-ALLERGY ENZYME FILTER)

Every 3 months:

- Remove dirt by a vacuum cleaner.

When dirt cannot be removed by vacuum cleaning:

- Soak the filter and its frame in lukewarm water before rinsing it.
- After washing, dry it well in shade.

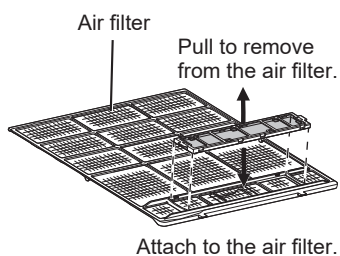
Every year:

- Replace it with a new air cleaning filter for best performance.

NOTE 1: Clean the filters regularly for best performance and to reduce power consumption.

NOTE 2: Dirty filters cause condensation in the air conditioner which will contribute to the growth of fungi such as mold. It is therefore recommended to clean air filters every 2 weeks.

Model	Part No.
MSZ-JX09WL MSZ-JX12WL	MAC-2320FT



2-1. AIR CLEANING FILTER

(MICROPARTICLE CATCHING FILTER, OPTION)

Removes the microparticles from the air by means of static electricity.

Back side of air filter

Clean every 3 months:

- Remove dirt by a vacuum cleaner.
- Put it back to its original position, and install all tabs of the air cleaning filter.
- Do not wash it with water. Replace it with a new air cleaning filter when tobacco tar or oil stains adhere to it.

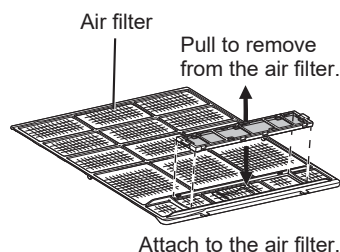
Every 3 year:

- Replace it with a new air cleaning filter for best performance.

NOTE 1: Clean the filters regularly for best performance and to reduce power consumption.

NOTE 2: Dirty filters cause condensation in the air conditioner which will contribute to the growth of fungi such as mold. It is therefore recommended to clean air filters every 2 weeks.

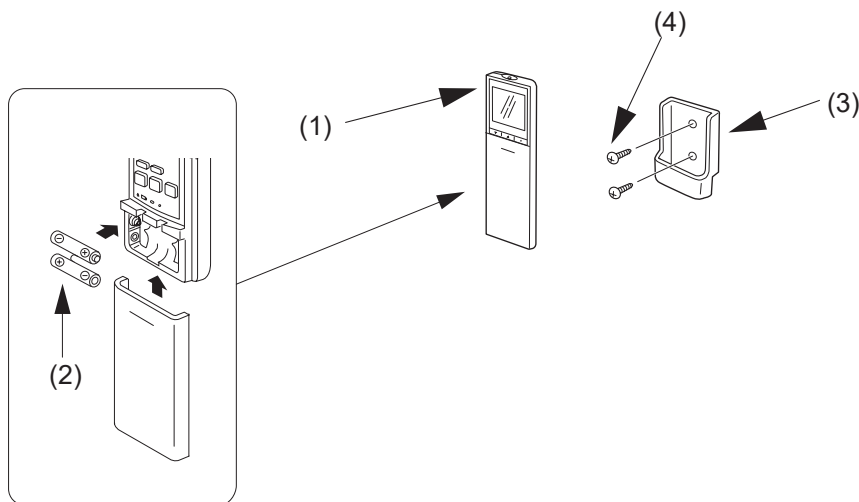
Model	Part No.
MSZ-JX09WL MSZ-JX12WL	MAC-EMF515FT-E



2-2. REMOTE CONTROLLER

Model	Part No. English
MSZ-JX09WL MSZ-JX12WL	MAC-FL115M-E

No.	Part Name	Quantity
(1)	Wireless remote controller	1
(2)	Battery (AAA) for (1)	2
(3)	Remote controller holder	1
(4)	Screws for the remote controller holder (3) 3.5 × 16 mm (Black)	2



MITSUBISHI ELECTRIC CORPORATION

HEAD OFFICE: TOKYO BUILDING, 2-7-3, MARUNOUCHI, CHIYODA-KU, TOKYO 100-8310, JAPAN