

SERVICE PARTS LIST FOR MITSUBISHI ELECTRIC PACKAGED AIR-CONDITIONERS

Series : PQHY-P•THMU-A
PQHY-P•YHMU-A

REVISED

Aug. 2012

BWE0927B

INDEX

PQHY-P72THMU-A
PQHY-P96THMU-A
PQHY-P120THMU-A
PQHY-P72YHMU-A
PQHY-P96YHMU-A
PQHY-P120YHMU-A

The Package name list

PQHY-P144TSHMU-A	[PQHY-P72THMU-A+PQHY-P72THMU-A]
PQHY-P168TSHMU-A	[PQHY-P72THMU-A+PQHY-P96THMU-A]
PQHY-P192TSHMU-A	[PQHY-P96THMU-A+PQHY-P96THMU-A]
PQHY-P216TSHMU-A	[PQHY-P96THMU-A+PQHY-P120THMU-A]
PQHY-P240TSHMU-A	[PQHY-P120THMU-A+PQHY-P120THMU-A]
PQHY-P144YSHMU-A	[PQHY-P72YHMU-A+PQHY-P72YHMU-A]
PQHY-P168YSHMU-A	[PQHY-P72YHMU-A+PQHY-P96YHMU-A]
PQHY-P192YSHMU-A	[PQHY-P96YHMU-A+PQHY-P96YHMU-A]
PQHY-P216YSHMU-A	[PQHY-P96YHMU-A+PQHY-P120YHMU-A]
PQHY-P240YSHMU-A	[PQHY-P120YHMU-A+PQHY-P120YHMU-A]

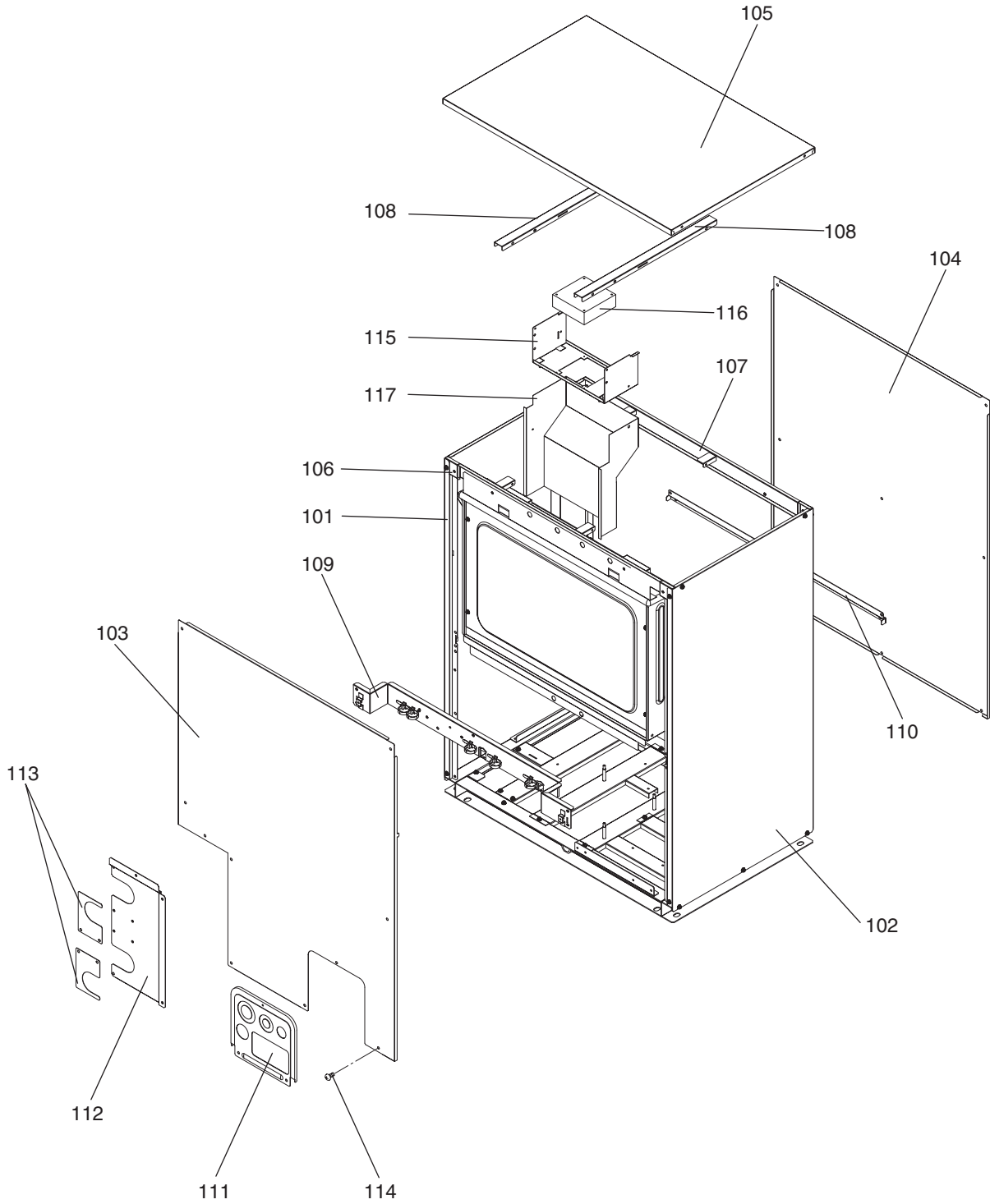
Part information update day : 2012/08/24

Please change the old catalog (issued Nov. 2010, No.BWE0927A) to this new catalog.
Content of revision : Some of parts are changed.

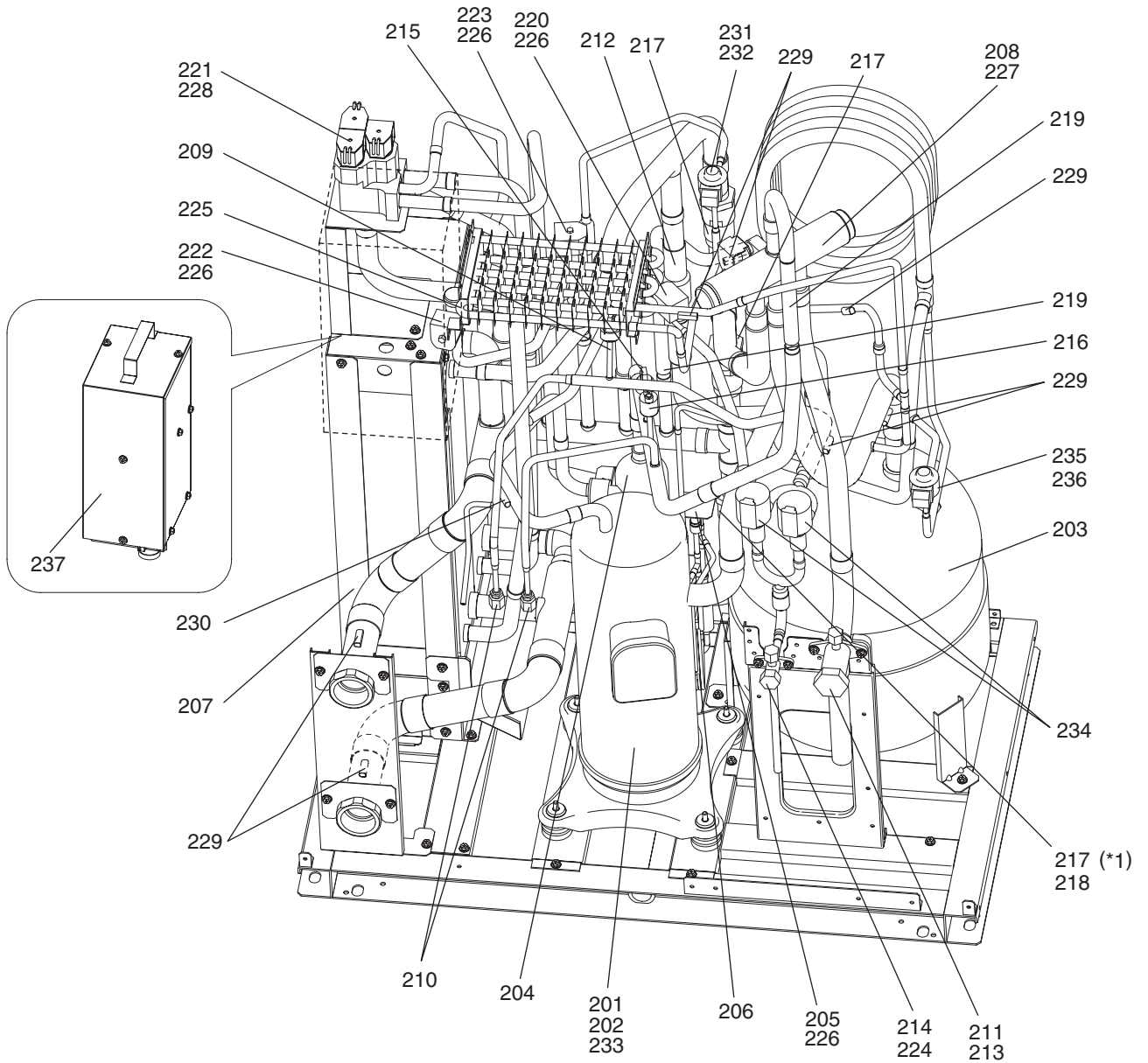


PQHY-P72,P96,P120THMU-A
PQHY-P72,P96,P120YHMU-A

EXTERNAL PARTS

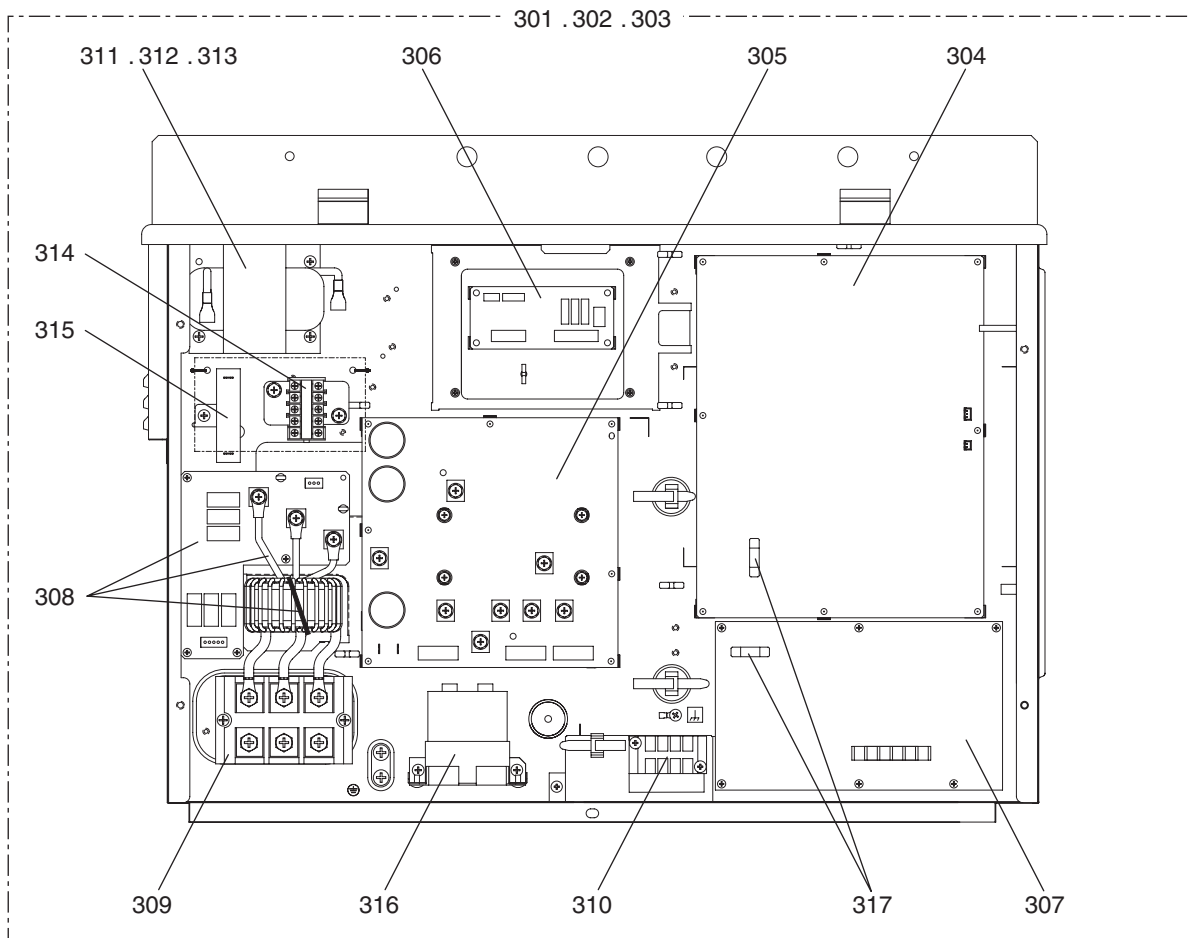


No.	Part No.	G : RoHS Apply Only W : RoHS Apply by Running Change		Spec.	PQHY-P72THMU-A	PQHY-P96THMU-A	PQHY-P120THMU-A	PQHY-P72YHMU-A	PQHY-P96YHMU-A	PQHY-P120YHMU-A	Dwg. No.	Notes for the models	Revision info.
			Part Name										
101	R61 144 651	G	Panel assy L		1	1	1	1	1	1	KB00P121G04		Chg.
102	R61 145 651	G	Panel assy R		1	1	1	1	1	1	KD00F962G01		Chg.
103	R61 146 651	G	Panel assy F		1	1	1	1	1	1	KB00R842G05		Chg.
104	R61 004 677	G	Panel B		1	1	1	1	1	1	KB00P073G03		Chg.
105	R61 148 651	G	Panel assy T		1	1	1	1	1	1	KB01P683G01		
106	R61 027 162	G	Frame assy FU	BSG	1	1	1	1	1	1	KB00M725G03		
107	R61 028 162	G	Frame assy FR	BSG	1	1	1	1	1	1	KB00M722G03		
108	R61 029 162	G	Frame U		2	2	2	2	2	2	KB02T292H01		
109	R61 030 162	G	Frame assy M	BSG	1	1	1	1	1	1	KB00P638G02		
110	R61 026 162	G	Frame MB		1	1	1	1	1	1	KB02P064H01		
111	R61 072 690	G	Piping cover		1	1	1	1	1	1	KB02L912H03		
112	R61 150 651	G	Panel W		1	1	1	1	1	1	KB01P063G02		
113	R61 024 667	G	Panel attachment W		2	2	2	2	2	2	KB02M718H02		
114	R63 007 087	G	H Screw	5 x 14 KNURLED (30pcs)	3	3	3	3	3	3	KB00H418G14		
115	R61 027 128	G	Attachment fan	BSG	1	1	1	1	1	1	KB02R714G03		
116	R63 Y02 300	G	Fan	109S025UL	1	1	1	1	1	1	P712360X01		
117	R61 020 457	G	Duct		1	1	1	1	1	1	KB00P660G01		

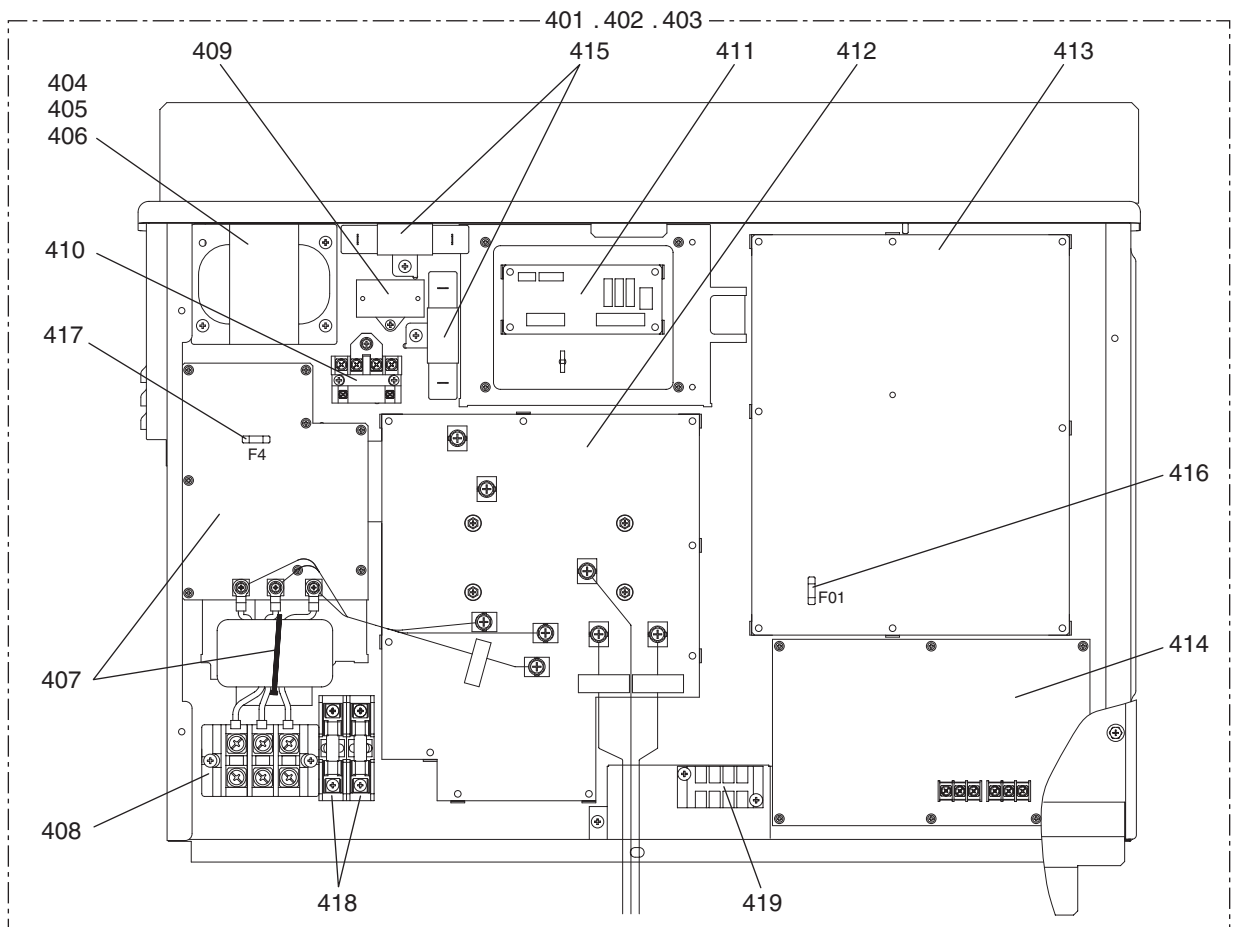


*1 Check valve (217) alone can be replaced only if it is accessible from behind the unit; otherwise, the entire check valve assembly (218) needs to be replaced.

No.	Part No.	W G	Part Name	Spec.	PQHY-P72THMU-A	PQHY-P96THMU-A	PQHY-P120THMU-A	PQHY-P72YHMU-A	PQHY-P96YHMU-A	PQHY-P120YHMU-A	Dwg. No.	Notes for the models	Revision info.
201	R69 047 478	W	Scroll compressor	ENB52FA-U	1	1	1				EP10107B06		
202	R69 023 478	G	Scroll compressor	ENB52FA-YE				1	1	1	EP10107B03		
203	R61 052 484	G	Accumulator assy		1	1	1	1	1	1	KB00T102G04		Chg.
204	R61 019 487	G	Oil separator assy		1	1	1	1	1	1	KB00R872G05		
205	R61 034 232	G	Solenoid valve	VPV-U	1	1	1	1	1	1	P631294X01	<SV1a>	
206	R63 002 425	G	Capillary tube assy		1	1	1	1	1	1	KB49F229G01	<CP1>	
207	R61 012 409	G	Heat exchanger assy	(Water-side)	1	1	1	1	1	1	KB00M867G06		
208	R61 010 403	G	Four way valve	STF-07U	1	1	1	1	1	1	P633122X01	<21S4a>	
209	R63 016 288	G	Pressure sensor	LP D173	1	1	1	1	1	1	KB00M867G05	<63LS>	
210	R63 S84 413	G	Check joint	R410A	2	2	2	2	2	2	P666002X01	<CJ1,CJ2>	
211	R63 007 538	G	Valve	VSAMH8SSCM-LA1	1	1	1	1	1	1	P636353X01	<BV1>	
212	R61 001 418	G	Check valve	BCV-1810	1	1	1	1	1	1	P639179X02	<CV3a>	
213	R61 008 454	G	Strainer	25.4D	1	1	1	1	1	1	KB48K250G01	<ST1>	
214	R61 009 538	G	Valve	VSAMH3SSCM-A	1	1	1	1	1	1	P636357X01	<BV2>	
215	R63 015 288	G	Pressure sensor	HP D173	1	1	1	1	1	1	KB00M867G04	<63HS1>	
216	R63 Y11 208	G	Pressure switch	ACB1UB28W	1	1	1	1	1	1	P426320X01	<63H1>	
217	R61 002 418	G	Check valve	YDV-22Y9	3	3	3	3	3	3	P639183X01	<CV4a,CV7a,CV8>	Chg.
218	R63 007 418	G	Check valve assy		1	1	1	1	1	1	KB00M867G01	<CV8>	
219	R63 R43 418	G	Check valve	BCV-1005	2	2	2	2	2	2	P639165X01	<CV1a,CV6a>	
220	R63 027 232	G	Solenoid valve	VALVE VPV-L	1	1	1	1	1	1	P631296X01	<SV9>	
221	R61 038 232	G	Solenoid valve block		1	1	1	1	1	1	KB00T028G02		Chg.
222	R61 040 232	G	Solenoid valve	VPV-803DQ50	1	1	1	1	1	1	P631300X01	<SV7b>	
223	R63 001 921	G	Solenoid valve	VPV	1	1	1	1	1	1	P631295X01	<SV7a>	
224	R63 Y03 454	G	Strainer	19.05D	1	1	1	1	1	1	W893281G01		
225	R61 319 480	G	INV heat exchanger assy		1	1	1	1	1	1	KB00T251G01		
226	R61 011 243	G	Solenoid valve coil		4	4	4	4	4	4	P472047X01	<SV1a,SV7a,SV7b,SV9>	
227	R61 Y21 243	W	Solenoid valve coil		1	1	1	1	1	1	P472028X01	<21S4a>	
228	R63 6A7 243	W	Solenoid valve coil		3	3	3	3	3	3	P472010X01	<SV4a,SV4b,SV4d>	Chg.
229	R61 060 200	G	Thermistor	THINV	7	7	7	7	7	7	P418065X01	<TH2,TH3,TH5-TH8>	
230	R63 911 202	G	Thermistor		1	1	1	1	1	1	P425416X02	<TH4>	
231	R63 R34 401	G	Linear expansion valve	LEVINV	1	1	1	1	1	1	P632416X01		
232	R61 024 401	G	Linear expansion valve coil	CAM 6P LEVINV	1	1	1	1	1	1	P472054X02		
233	R61 003 236	G	Crank case heater	230V 51W	1	1	1	1	1	1	P497068X01		
234	R61 026 401	G	Linear expansion valve	EFM-A	2	2	2	2	2	2	P632479X01	<LEV2a,LEV2b>	
235	R63 4H6 401	G	Linear expansion valve	CAM35-S	1	1	1	1	1	1	P632444X01	<LEV1>	
236	R63 011 401	G	Linear expansion valve coil	CAM6P	1	1	1	1	1	1	P472059X02	<LEV1>	
237	R61 023 260		Transformer assy					1	1	1	KB00M867G08		



No.	Part No.	G : RoHS Apply Only W : RoHS Apply by Running Change		Spec.	PQHY-P72THMU-A	PQHY-P96THMU-A	PQHY-P120THMU-A				Dwg. No.	Notes for the models	Revision info.
		Part Name											
301	R61 220 305	Control box		WY72TH	1							KE80C205G77	
302	R61 221 305	Control box		WY96TH		1						KE80C205G79	
303	R61 222 305	Control box		WY120TH			1					KE80C205G81	
304	R61 036 281	G	Control board		1	1	1					KE80C153G62	
305	R61 018 280	W	INV board		1	1	1					W647875G09	
306	R63 Y55 280	G	Relay board		1	1	1					W629574G01	
307	R61 051 280	G	M-NET board		1	1	1					KE80C055G04	
308	R61 009 293	W	Noise filter	board,coil,band	1	1	1					KE80C054G03	
309	R61 N22 246	W	Terminal block		1	1	1					S436005H02	<TB1>
310	R61 019 246	G	Terminal block		1	1	1					S436005H15	<TB8>
311	R61 021 259	G	Reactor		1							P715464X01	<DCL>
312	R61 022 259	G	Reactor			1						P715465X01	<DCL>
313	R61 016 259	W	Reactor				1					P715456X01	<DCL>
314	R61 G95 215	W	Magnetic relay		1	1	1					S421003H20	<72C>
315	R63 670 234	G	Resistor		1	1	1					P411113X01	<R1>
316	R61 4H6 256	W	Capacitor		1	1	1					P412312X01	<C1>
317	R61 005 239	G	Fuse	3.15A AC250V T	2	2	2					S423001H39	



No.	Part No.	G : RoHS Apply Only W : RoHS Apply by Running Change	Spec.	PQHY-P72YHMU-A	PQHY-P96YHMU-A	PQHY-P120YHMU-A				Dwg. No.	Notes for the models	Revision info.
		Part Name										
401	R61 223 305		WY72YH	1						KE80C152G81		
402	R61 224 305		WY96YH		1					KE80C152G83		
403	R61 225 305		WY120YH			1				KE80C152G85		
404	R61 023 259	G	Reactor	1						P715466X01	<DCL>	
405	R61 017 259	G	Reactor		1					P715458X01	<DCL>	
406	R61 027 259	G	Reactor			1				P715476X01	<DCL>	Chg.
407	R61 012 293	G	Noise filter	1	1	1				KE80C155G06	<Noise Filter,L>	
408	R61 N18 246	W	Terminal block	1	1	1				S436005H01	<TB1>	
409	R61 001 255	G	Capacitor assy	1	1	1				KE00D263G01	<C100>	
410	R61 003 216	G	Relay	1	1	1				P421295X01	<72C>	
411	R63 Y55 280	G	Relay board	1	1	1				W629574G01		
412	R61 053 280	G	INV board	1	1	1				KE80C154G03		
413	R61 036 281	G	Control board	1	1	1				KE80C153G62		
414	R61 118 280	G	M-NET board	1	1	1				KE80C055G05		
415	R61 001 234	G	Resistor	2	2	2				P411151X01	<R1,R5>	
416	R61 005 239	G	Fuse	1	1	1			3.15A AC250V T	S423001H39		
417	R63 993 964	G	Fuse	1	1	1			6.3A AC250V T	S423001H30		
418	R61 012 239	G	Fuse	2	2	2			6A AC600V F	KE80D957G01		Chg.
419	R61 019 246	G	Terminal block	1	1	1				S436005H15	<TB8>	

mitsubishi electric corporation
HEAD OFFICE: TOKYO BLDG., 2-7-3, MARUNOUCHI, CHIYODA-KU, TOKYO 100-8310, JAPAN

BWE0927B (20120831)